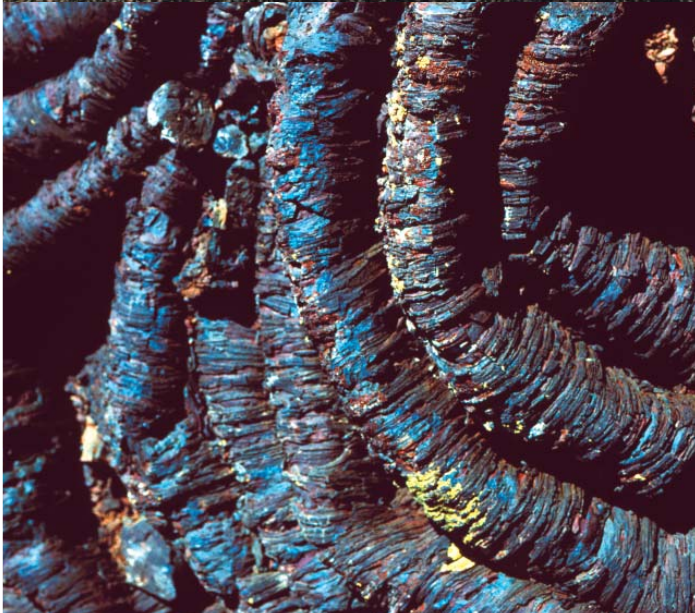


Chapter 2

Alternatives, Including the Proposed Plan



Previous page, clockwise, from top left
A'a and cinders
Lava flow
Cave entrance
Ropy pahoehoe

CHAPTER 2 ALTERNATIVES, INCLUDING THE PROPOSED PLAN

OVERVIEW OF ALTERNATIVES

The Bureau of Land Management (BLM) and National Park Service (NPS) developed management alternatives for Craters of the Moon National Monument and Preserve (Monument) using public responses to newsletters and public meetings, as well as ideas from staffs of both agencies. National Environmental Policy Act (NEPA) regulations and BLM and NPS resource management planning regulations require the formulation of a reasonable range of alternatives that seek to address identified planning issues and management concerns. Each alternative must be evaluated to ensure that it would be consistent with the area's purpose and significance; the mission goals for the Monument; and current laws, regulations, and policy.

The four management alternatives developed for the Monument are detailed in this section, including:

- Alternative A – No Action Alternative (required by NEPA) – retains current management of the Monument
- Alternative B – Places emphasis on a broad array of visitor experiences within the Monument
- Alternative C – Places emphasis on retention and enhancement of the Monument's primitive character
- Alternative D (Proposed Plan) – Places emphasis on aggressive restoration of sagebrush steppe communities

Each alternative has a somewhat different concept, which is primarily defined in terms of area allocations into different management zones. Each alternative also varies somewhat in its desired future conditions and management prescriptions for various resource topics. All alternatives afford the high degree of protection for Monument resources required by Proclamation 7373.

This chapter first contains a description of the four management zones that are apportioned differently in each of the alternatives. These are:

- Frontcountry Zone
- Passage Zone
- Primitive Zone
- Pristine Zone

Next, there is a discussion of "Management Guidance Common to All Alternatives," organized by resource topic. This management guidance includes desired future conditions and management actions for each resource. Desired future condition statements describe the preferred long-term condition for specific resources. Future decisions and actions by management would be judged by whether they further progress towards these desired conditions. Management actions describe specific activities that help to achieve the desired future conditions.

Following the summary of "Management Guidance Common to All Alternatives," each alternative is described, with emphasis on the concepts behind the alternative, management zone allocation, and management guidance for those topics that vary from alternative to alternative. Table 7, at the end of this chapter, contains a summary of the alternatives, with emphasis on the key features described below and those aspects that differentiate the alternatives from one another.

DESCRIPTION OF MANAGEMENT ZONES

Four management zones were developed for use in this plan to guide future management actions within the Monument: Frontcountry, Passage, Primitive, and Pristine. These management zones respond to the wide range of preferences expressed by the public. Different views were expressed about what sort of visitor experiences should be available and what facilities and accommodations should be provided within the Monument. While a different emphasis would be given to various zoned portions of the Monument, the intent is to always be consistent with the purposes for which the Monument was established and with the mission goals identified in the Introduction to this document.

Management zones are tools that help guide decision-making on visitor uses, facility development, and other uses. Management zones do not address natural and cultural resource management. Certain limitations and developments in some areas may better provide for one user-type than another. Management zoning would be established throughout the planning area to provide and maintain a range of recreational opportunities for different user-types with varying interests and abilities. Each separate zone has distinct settings to be provided and maintained. Physical settings consider the degree of naturalness and amount and type of facilities, as well as proximity to roads. Social settings consider the number of contacts with other people, the size of groups, and evidence of other users. Managerial

settings consider the amount of visitor management used to achieve desired social and resource conditions, the compatibility of traditional land uses with the recreational environment, and the type of vehicle use allowed in the area.

All public lands within each alternative would be assigned to one of the four zones. The location and extent of the various zones vary among the alternatives in order to support the concept behind each alternative.

Table 1 summarizes the main features of each of the four management zones, and photos below illustrate the typical setting that would be expected in each zone.



Frontcountry Zone



Passage Zone



Primitive Zone



Pristine Zone

Examples of typical setting in each Management Zone.



Table 1
Management Zones

	FRONTCOUNTRY ZONE	PASSAGE ZONE	PRIMITIVE ZONE	PRISTINE ZONE
Basic Concept	The Frontcountry Zone would be defined by structures and grounds provided for visitor support services such as information, education, and recreation. Access would be easy and convenient, and the visitor encounter rate would be very high. High maintenance and intervention would be required to accommodate concentrated visitor use. Challenge and adventure would be less important compared to other zones. Zone corridor would be 660 feet wide along roads.	The Passage Zone is intended to accommodate the flow of people and vehicles from one place to another and to provide the minimal accommodations such as parking, trailheads, primitive campsites, and information kiosks or signs for people preparing to venture into the Primitive and/or Pristine Zones of the Monument. Where the zone is only a narrow corridor following a road (660 feet wide), the expectation is that particular road will be maintained to a consistent standard along the length of the corridor, normally a Class B or Class C road from one end of the corridor to the other.	The Primitive Zone would provide an undeveloped, primitive and self-directed visitor experience, while accommodating motorized and mechanized access on designated routes. Facilities would be rare and provided only where essential for resource protection.	The Pristine Zone would include mostly lava flows, designated Wilderness and Wilderness Study Areas. This zone would provide an undeveloped and self-directed visitor experience, generally without motorized or mechanical access. Facilities would be non-existent.
Visitor Experience	<p>High chance for encounters with people.</p> <p>Travel on paved, improved, or maintained roads.</p> <p>Developed campgrounds.</p> <p>A high level of interpretation programs; informational exhibits.</p> <p>Diverse trail system, some paved.</p> <p>Low chance for encounters with livestock or associated developments.</p> <p>High level of contact with agency staff.</p> <p>Typical visitor activities: sightseeing, driving, bicycling, walking, nature study, ranger-led programs, camping, picnicking.</p>	<p>Medium chance for encounters with people.</p> <p>Travel on higher level of maintained roads than the Primitive Zone.</p> <p>Rustic, designated campsites.</p> <p>Limited interpretation, wayside exhibits.</p> <p>Multiuse, maintained, and designated trails.</p> <p>High chance for encounters with livestock or associated developments.</p> <p>Low to moderate level of contact with agency staff.</p> <p>Typical visitor activities would be driving, sightseeing, hiking, mountain biking, horseback riding, dispersed camping.</p>	<p>Low chance for encounters with people.</p> <p>Travel on low-standard roads with challenging driving.</p> <p>No developed campsites; dispersed primitive camping.</p> <p>Minimal on-site interpretation.</p> <p>Low-standard multiuse trails with little or no maintenance.</p> <p>Medium chance for encounters with livestock or associated developments.</p> <p>Very low level of contact with agency staff.</p> <p>Typical visitor activities would require self-sufficiency: hiking, hunting, horseback riding, mountain biking, remote camping, driving on unimproved roads.</p>	<p>High chance for solitude.</p> <p>Travel involves challenging conditions and no roads.</p> <p>No developed campsites; dispersed primitive camping.</p> <p>No on-site interpretation.</p> <p>Very few trails.</p> <p>Low chance for encounters with livestock or associated developments.</p> <p>Essentially no contact with agency staff.</p> <p>Typical visitor activities would require self-sufficiency and involve challenge, risk, and adventure: dispersed camping, backpacking, nature study, and hunting.</p>
Access and Kinds of Development	<p>Paved roads and high-standard gravel roads.</p> <p>Hardened and maintained pedestrian trails.</p> <p>Frequent signs for directions, safety, and interpretation.</p> <p>Offices, utilities, maintenance facilities, storage areas, visitor center, employee housing, and restrooms.</p>	<p>Class B-D roads. Some arterial roads would be regularly maintained to allow seasonal car, SUV, light truck passage.</p> <p>Trailheads; maintained motorized and non-motorized trails.</p> <p>Signs for directions, safety, resource protection, and interpretation.</p> <p>Minimal administrative structures, vault toilets.</p>	<p>Class C-D roads. Dirt roads, accessible seasonally only with high-clearance vehicles and OHVs.</p> <p>Low standard multiuse trails.</p> <p>Minimal signs for visitor safety and resource protection only.</p> <p>No buildings.</p>	<p>No roads.</p> <p>Very few trails; no motorized trails.</p> <p>Very few signs.</p> <p>No buildings.</p>

ROAD AND TRAIL CLASSIFICATIONS

Within the Monument, a “road” is defined as an established route capable of accommodating travel by a full-sized automobile or truck. Following other routes or establishing new routes with motorized or mechanized vehicles is considered “off-road” use, which is not permitted in the Monument (see below). The agencies have described four different road classifications and two trail classifications within the Monument:

- Class A Roads generally are paved and have a surface of asphalt, concrete, or similar continuous material. In addition to U.S. Highway 20/26/93 (US 20/26/93), the only Class A roads are the Loop Drive, spur roads, and associated parking areas in the original NPS Monument. Class A roads are only found in the Frontcountry Zone.
- Class B Roads are improved roads constructed with a natural or aggregate surface, and they may have berms, ditches, or culverts. Regular maintenance allows passage by standard passenger and commercial vehicles such as cars, light trucks, and some heavy trucks. Seasonal conditions and lack of snow removal may render these roads impassable. Class B roads are found primarily in the Passage Zone.
- Class C Roads have a natural surface and may be either constructed or established over time by repeated passage of vehicles. The natural surface may be dirt, sand, or rock. A minimal amount of maintenance, if any at all, is limited primarily to spot surface grading to allow vehicle passage within the original road corridor. Maintenance on these roads is performed only as necessary, not in accordance with any regular schedule. Class C roads accommodate a much smaller range of vehicles than Class B roads, usually high-clearance two-wheel-drive and four-wheel-drive vehicles. Seasonal conditions or wet weather may render these roads impassable at any time. Class C roads are found primarily in the Passage and Primitive Zones.
- Class D Roads are primitive roads that were not constructed but have been established over time by the passage of motorized vehicles. These roads receive no maintenance or grading. However, management retains the authority to perform occasional emergency repairs or maintenance as necessary for administrative purposes and general resource protection. These roads are generally referred to as “two-tracks” or a set of two ruts with vegetation growing in between the wheel ruts. The condition of these roads varies from sometimes passable by a passenger car, to only suitable for high-clearance four-wheel-drive vehicles. Seasonal conditions or wet weather may render these roads impassable at any time. Class D roads are found primarily in the Primitive Zone.
- Class 1 Trails are restricted to non-motorized/non-mechanized travel (wheelchairs are allowed). Examples of permitted forms of travel include foot travel, pack animal, and horseback. Examples of prohibited forms of travel on Class 1 trails include mountain bikes and all motorized vehicles. Class 1 trails may be further restricted, for example, to foot travel only.
- Class 2 Trails are open to motorized/mechanized travel in addition to foot travel, pack animal, horseback, and other forms of passage. Examples of prohibited forms of travel include any vehicle with a footprint wider than an 18-inch tread (all-terrain vehicles, four-wheelers, and four-wheel-drive vehicles).

MANAGEMENT GUIDANCE COMMON TO ALL ALTERNATIVES

The following sections describe the management guidance that would be applicable to all four alternatives. The actions described here would be implemented regardless of which alternative is ultimately selected. This section compiles common direction in one place so that the reader can focus on



the actual differences among alternatives. Technical terms used here are defined in the Glossary or are explained more fully in Chapter 3.

Laws, regulations, and policies drive a large portion of BLM and NPS work (see Planning Criteria, Appendix B). The management guidance described in this section includes many decisions, which are required in a land use plan, and also brings forward relevant direction from existing land use plans.

Agencies frequently do not have much latitude to vary proposed management across alternatives and still comply with laws, regulations, and policy. For example, at the Monument, approximately 70 percent of the planning area is designated as Wilderness or Wilderness Study Areas. Existing designations like wilderness constrain the type of actions the agencies can propose in this planning effort.

NATURAL RESOURCES

Natural Resources — General

Desired Future Conditions:

- Resource inventories and surveys documenting the condition and extent of natural resources (including geologic features) and processes, kipukas, and sensitive species are given sufficient emphasis to enable completion during the life of the plan.
- Monitoring programs are developed and implemented to track changes in the condition of key resources serving as “vital signs” of ecosystem health or to fulfill other purposes of enabling proclamations and laws.

Management Actions:

- Resource inventories, surveys, and monitoring programs would be provided for and implemented.
- Information gained would be disseminated to the public and used in management decisions.
- Proactive management activities would be undertaken to mitigate potential effects of public use.
- The agencies would seek opportunities with the tribes and state and federal agencies for partnering in long-term monitoring of Monument natural resources.

Geological Resources

Desired Future Conditions:

- Natural processes remain the dominant agents of change to geologic resources within the Primitive and Pristine Zones.
- Resource inventories and surveys that document the condition and extent of geologic features (including caves and paleontological resources) and also the geologic processes are sufficiently completed to provide scientifically defensible management decisions.
- Unique or representative geologic features within Frontcountry and Passage Zones are identified and documented and have protective strategies implemented to minimize any adverse effects from improved visitor access to the areas.
- Knowledge and understanding of geologic resources and processes are sufficient to interpret the interrelationships between geology and biotic communities.
- Geologic knowledge and understanding are effectively shared with the public in order to stimulate appreciation and protection of the geologic resources.

Management Actions:

- Geologic features within the Frontcountry and Passage Zones could be modified as appropriate to facilitate visitor access.
- A cave management plan would be developed to meet the Federal Cave Resources and Protection Act (FCRPA) requirements.
- Steps would be taken to protect geological features from damage presently occurring as a result of unrestricted public access and/or poorly designed or constructed public facilities.
- Prior to authorizing surface-disturbing activities, areas would be surveyed for unique, rare, or special geologic resources including fossils.
- Threats to unique or outstanding examples of geologic features, including paleontological and cave resources, would be identified and mitigated as appropriate.

Soils

Desired Future Conditions:

- Soils are stable and functional. The amount of bare mineral soil and cover of perennial vegetation, litter, and biological soil crust are within 10 percent of that expected for the ecological site.

Management Actions:

- Soils would be protected from accelerated or unnatural erosion from ground disturbing activities. For example, post-fire stabilization efforts would protect erosion-prone soils through natural and assisted revegetation.
- The potential for, or presence, extent, and condition of, biological soil crusts would be investigated to provide specific management guidance.
- Biological soil crusts would be considered in management decisions where appropriate.

Vegetation, Including Special Status Species, and Fire Management

Desired Future Conditions:

- Native plant communities sustain biodiversity and provide habitat for native wildlife.
- There is no net loss, and preferably a net gain, of sagebrush steppe communities over the life of the plan.
- Woodland communities (e.g., limber pine, aspen, and juniper) are maintained as healthy mixed-age communities within their natural range and distribution.
- Natural ecological processes are the dominant factor in determining the composition and distribution of plant communities in the Preserve and wilderness areas.
- The areas dominated by invasive annual species (cheatgrass and other similar plants) are minimized.
- All plant communities are in or making progress towards Fire Condition Class (FCC) 1 (see Chapter 3).
- Preventing or limiting the spread of noxious weeds using Integrated Weed Management perpetuates the natural condition and biodiversity of the planning area.
- Kipukas in the Pristine Zone are free of noxious weeds.
- Sustainable forage is available for livestock and wildlife.
- Special status species (those listed by U.S. Fish and Wildlife Service [USFWS], BLM, and/or the Idaho Department of Fish and Game [IDFG]) remain at viable population levels.

Management Actions:

- Wildland fire would be suppressed to protect life and property, healthy sagebrush steppe communities, recent rehabilitation and restoration projects, cultural sites, and the Little Cottonwood Creek Watershed.
- Existing sagebrush steppe communities would be protected to prevent loss of shrub cover and managed to promote a diverse, desirable grass and forb understory.
- Annual grasslands and highly degraded sagebrush steppe communities would be restored to achieve a mosaic of shrubs, forbs, and grasses capable of sustaining native animal populations.
- In the event of wildland fire, burned areas would be rehabilitated when necessary to restore the appropriate mosaic of sagebrush species and subspecies, along with a diverse perennial understory, and to suppress invasive and noxious weeds.
- National and Idaho state habitat guidelines for sage-grouse and sagebrush steppe obligates developed by interagency working groups regarding composition and structure of sagebrush habitats on a landscape scale would be adopted to guide sagebrush steppe management.
- Only certified weed-free hay, straw, and mulch would be permitted within the Monument.
- Use of native plants would be emphasized in rehabilitation and restoration projects, and only native plants would be used for rehabilitation or restoration projects within the Pristine Zone.
- Integrated Weed Management principles would be used to:
 - Detect and eradicate all new infestations of noxious weeds;
 - Control existing infestations; and
 - Prevent the establishment and spread of weeds within and adjacent to the planning area.



Vegetation, Including Special Status Species, and Fire Management (cont.)

- Weed infestations in wilderness areas would be controlled by methods consistent with minimum tool requirements and Integrated Weed Management principles, including prevention of disturbance activities; use of cultural and mechanical methods to control or physically remove noxious weeds; and application of herbicides and possibly biological controls.
- BLM and NPS would develop a joint fire management implementation plan for the Monument.
- The cooperative arrangement between BLM and NPS related to fire management would continue, including cooperative agreements with local fire departments and rural fire districts.
- All special status species in the Monument would be inventoried with monitoring plans established, particularly when and where adverse impacts may occur.
- Actions and stipulations necessary to protect special status species and their habitats would be made part of land use authorizations (e.g., limiting fragmentation of special status species populations when considering road maintenance) and fire planning.
- Current science and best available technologies and plant materials would be considered in analysis and implementation of all restoration projects. Restoration treatments may be active or passive and may include but are not limited to the following: prescribed fire, thinning, mowing, herbicide treatment, seeding, temporary removal of livestock and/or changes in grazing regimes or facilities, and road closures. See Appendix J for specific protocols for all fire management and vegetation treatment activities.
- Areas classified as poor to fair biotic integrity would be highest priority for restoration treatments (see Figure 15; see also Jurs and Sands 2004).

Water Resources

Desired Future Conditions:

- Riparian areas and wetlands within the planning area are maintained, restored, or enhanced, so that they provide diverse and healthy habitat and water quality conditions for riparian and wetland obligates and other wildlife species.
- Little Cottonwood Watershed yields sufficient safe drinking water for current public and administrative uses in the visitor center complex.

Management Actions:

- No additional playas would be modified or developed.
- Playas would be evaluated for restoration on a case-by-case basis.
- The agencies would work with appropriate State of Idaho authorities to obtain water resources needed for Monument purposes.

Wildlife, Including Special Status Species

Desired Future Conditions:

- Habitat within the planning area supports a diverse range of native wildlife species and gives the public high-quality opportunities for wildlife-based recreation.
- Habitat for migratory birds, including forage, water, cover, structure, and security, is available within the planning area to support healthy populations of resident and migrant species.
- Sage-grouse restoration habitat (R1 & R2) would achieve significant progress towards reclassification as Key habitat.
- High-quality habitats for sagebrush obligate species are provided.
- Species composition in Key sage-grouse habitat would reflect site potential.

Management Actions:

- Inventory and monitoring of wildlife would emphasize species that are regionally or nationally important.
- A monitoring program would be established to detect species populations in decline, species as indicators of the health of the ecosystem, and record the presence of species of special concern.
- NPS, in consultation with the state and tribes, would designate areas within the Preserve and periods of time when no hunting would be permitted for protection of the area's resources.
- BLM would continue to hold annual meetings and coordinate closely with USDA Wildlife Services and livestock lessees with the purpose of reducing livestock losses. BLM would encourage using non-lethal methods, education, and the targeting of specific offending animals for lethal methods. These procedures would be implemented in order to protect both public safety and the natural resources for which the Monument was designated.
- On all NPS-administered lands, predator control would not be authorized by the NPS except on a case-by-case basis.
- Native animal species identified as pests would be managed in accordance with the applicable BLM or NPS agency management policies depending upon the administrative area in which the pest occurs.
- All special status species in the Monument would be inventoried with monitoring plans established, particularly when and where adverse impacts may occur.
- Actions and stipulations necessary to protect special status species and their habitats would be made part of land use authorizations (e.g., limiting fragmentation of special status species populations when considering road maintenance) and fire planning.

Air Quality

Desired Future Conditions:

- Air quality related values, particularly visibility, within the Class I Craters of the Moon Wilderness Area are not degraded and adverse impacts do not occur.
- Air quality parameters negatively affecting human health, visibility or biological diversity remain at or below current levels.

Management Actions:

- The agencies would work proactively with surrounding communities, land management agencies, and the Idaho Department of Environmental Quality to limit increases of particulate matter and sulfur dioxide, which could reduce visibility, throughout the entire Monument.



Archaeological and Historical Resources

Desired Future Conditions:

- The extent and condition of cultural resources and traditional cultural properties are documented and adverse effects are avoided.
- The agencies maintain a single, consolidated cultural resource database.
- Archaeological resources either listed in or eligible to be listed in the National Register of Historic Places (NRHP) are protected in an undisturbed condition unless it is determined through appropriate consultation that disturbance or natural deterioration is unavoidable.
- The qualities that contribute to the eligibility for listing or listing of prehistoric/historic structures and historic trails in the NRHP are preserved and protected in accordance with the Secretary of the Interior's Standards, unless it is determined through appropriate consultation that disturbance or natural deterioration is unavoidable.

Management Actions:

- The significance of known archaeological and historic resources, structures, and landscapes would be evaluated and documented, in conjunction with the Idaho State Historic Preservation Officer (SHPO), for listing in the NRHP.
- Through consultation with the Idaho SHPO, areas for Section 110 cultural resource inventories would be prioritized.
- Measures such as access limitations and periodic monitoring would be identified to proactively manage and protect cultural resources, including traditional cultural properties.
- A proactive Section 110 inventory would be conducted as funding allows expanding the cultural resource database for the Monument.
- At-risk NRHP-eligible sites would be monitored for vandalism or other disturbances and protected/ stabilized as necessary.
- A comprehensive Archaeological Overview and Assessment of known and potential archaeological resources (baseline research report) within the planning area would be completed.
- A Cultural Resource Management Plan (CRMP) that describes how specific sites would be managed, defines what areas need additional inventory, and designates potential use categories for sites would be completed for the Monument.
- Eligible properties would be monitored periodically and steps would be taken to stabilize any property found to be deteriorating and to limit access as needed.
- Projects would be planned and designed so as to avoid adversely impacting cultural resources where possible. BLM and NPS would consult with Tribes and the Idaho SHPO to develop alternatives to avoid, minimize, or mitigate any potential adverse effects.
- Activities that may affect the Goodale's Cutoff of the Oregon Trail, the NPS headquarters/Visitor Center Mission 66-era area, or other properties listed or eligible for the NRHP would be undertaken in consultation with the Idaho SHPO.

Museum Collections

Desired Future Conditions:

- Museum collections (objects, works of art, historic documents, and natural history specimens) are maintained according to NPS museum management program requirements.

Management Actions:

- Monument collections would be accessible for legitimate scientific research and educational purposes.
- All resource management records that would be directly associated with museum objects would be managed as museum property. These and other resource management records would be preserved as part of the archival and manuscript collection because they document and provide an information base for the continuing management of the Monument's resources.

NATIVE AMERICAN RIGHTS AND INTERESTS

Desired Future Conditions:

- Traditional cultural properties of Native American tribes and access to those properties are preserved within the Monument for the use and benefit of current and future tribal members.
- For Native American tribes that have ties to this land as part of their ancestral homeland, the Monument holds meaning and value and is a place where treaty rights and religious/sacred traditions may be practiced in a manner supportive of the purpose of the Monument.
- Agencies and tribes maintain a government-to-government relationship, and the agencies routinely consult on matters involving the treaty interests and/or rights of the tribes.
- Tribal oral history would be considered and incorporated into interpretive materials, as well as resource management.

Management Actions:

- Native American tribes that have expressed an interest in traditional cultural properties within the Monument would be consulted with on a regular basis regarding the management of those properties.
- Handling of Native American Graves Protection and Repatriation Act (NAGPRA) materials would be addressed as a component of a Cultural Resources Management Plan.
- Should any NAGPRA materials ever be inadvertently discovered within the Monument, the agencies would follow the tribal consultation procedures outlined in the NAGPRA of 1990 regarding their treatment.
- The agencies in consultation with the tribes would identify protection measures for places of traditional cultural importance to Native Americans to preserve the integrity and use of these areas as described in National Register Bulletin 38.
- Agencies would consult with associated Native American tribes to develop and accomplish the programs of the Monument in a way that respects their beliefs, traditions, and other cultural values.
- Agencies would consult with Native American tribes prior to taking actions that would affect natural and cultural resources that are of interest and concern to them.
- Hunting, gathering, and use of certain natural resources as sacred objects for religious use would continue on the Preserve and expanded areas of the Monument. (See Chapter 3 for additional discussion.)



LAND USE AND TRANSPORTATION

Travel and Access

Desired Future Conditions:

- There is no net increase in road mileage within the Monument.
- The road system within the planning area provides access for visitors, permittees, non-federal landowners, and administrative needs while protecting those resources and values the Monument was established to preserve.
- The agencies coordinate road management inside and outside of the Monument in a cooperative fashion with local government agencies so that the transportation system is managed in a comprehensive, logical manner.
- The agencies also work cooperatively with local government agencies to provide appropriate access to the Monument and private land within the Monument.

Management Actions:

- The agencies would prepare guidelines and procedures for authorization of emergency and administrative off-road travel.
- The agencies would prepare an implementation-level Comprehensive Travel Management Plan, showing road and trail classifications, standards, restrictions, and closures. Current road standards and classifications will be maintained until the Comprehensive Travel Management Plan is approved.
- All land within the Monument other than designated roads and trails would be designated "Closed" for off-highway vehicle (OHV) and mechanized vehicle use (see Glossary).
- The agencies would prepare a travel map showing allowable uses, road and trail classifications, and standards and restrictions.
- No motorized vehicle roads or trails would be permitted within the Pristine Zone.
- The agencies would close and rehabilitate all routes established in Wilderness Study Areas that were not identified in the wilderness inventory as "existing ways."
- All roads and trails within the BLM-administered portions of Monument would be designated "Limited" for OHV/motorized vehicle use.
- All authorized roads located on NPS-administered portions of the Monument and Preserve would be open only to bicycles and licensed motorized vehicle travel and would be designated as "Park Roads."
- The agencies may close individual roads and trails temporarily or permanently to protect resources on a case-by-case basis.
- Snowmobile use on BLM-administered portions of the Monument would be addressed in an upcoming Comprehensive Travel Management Plan.
- The agencies would seek local jurisdiction concurrence (county or highway district) for any upgrade of commitment to future maintenance for any roadway under that entity's jurisdiction.

Livestock Grazing

Desired Future Conditions:

- Sustainable rangeland ecosystems are healthy; public rangelands are maintained or restored to meet Idaho Standards for Rangeland Health.
- Livestock forage is provided on a sustainable basis for the life of the plan, consistent with other resource objectives and with public land use allocations.
- Livestock developments are consistent with the desired future conditions for natural, cultural, and visual resources.

Management Actions:

- Nine allotment boundaries would be altered to accurately reflect the NPS/BLM boundary. There would be no change in animal unit month (AUM) preferences actually available for grazing. See Appendix F for additional details.
- BLM acres of land available for livestock use: total 273,000. BLM acres of land not available for livestock use: total 1,800. NPS acres of land not available for livestock use: total 462,880.
- Permitted livestock use: totals 36,965 AUMs. The current livestock use authorizations would be maintained until Idaho Standards for Rangeland Health evaluations or similar NEPA-compliant decisions identify the need for adjustments in livestock use to meet standards, vegetation, wildlife livestock, or resource objectives.
- Use of existing livestock developments in Primitive and Pristine Zones may continue. BLM may remove developments if they are no longer serving a useful purpose or resource objectives warrant their removal. Sites would be restored.
- The Brigham Point and Paddelford Flat sheep trails across NPS land would be evaluated for future use. See Appendix F.

Facilities

Desired Future Conditions:

- Visitor and administrative facilities within the Frontcountry Zone of the NPS Monument meet visitors' needs.
- The agencies cooperate with gateway communities in providing information and services to visitors at sites outside the Monument.
- Location of agency facilities and staffing levels promotes efficiency of operations and public needs.
- Principles of sustainable and universal design are incorporated into all facilities and operations.

Management Actions:

- Existing paved road system and parking areas would be modified to address safety and maintenance concerns.
- Fire stations at Carey and Kimama would include Monument information. There would be informational kiosks located along roads leading into the Monument.
- Opportunities for sharing BLM and NPS facilities and staff would be evaluated.
- Signs and wayside exhibits previously approved for visitor safety and resources protection would be installed at Kings Bowl.
- Monument informational materials would be provided for display or distribution at non-agency sites in communities surrounding the Monument.

Lands and Realty

Desired Future Conditions:

- Existing access to private lands is maintained, consistent with applicable laws, while minimizing environmental impacts.
- Valid existing rights are protected (see Glossary).

Management Actions:

- The agencies would pursue acquisition or exchange for private inholdings within the Monument based on initiation by willing seller.
- The agencies would pursue an exchange with Idaho Department of Lands for state lands located in and near the Monument.
- Action on applications for new discretionary land use authorizations would be guided by existing NPS and BLM policies.



Mineral Materials

Desired Future Conditions:

- Material sites (sites excavated for gravel, cinder, and other materials) are reclaimed and restored where feasible when no longer in use.

Management Actions:

- Existing authorization for material sites within the Monument would continue for the term of the authorization.
- New materials sites would not be developed except for Monument administrative purposes.
- Information would be provided on BLM areas outside the Monument where casual collection is appropriate and permitted for materials similar to those found in the Monument.
- Agencies would consult with Idaho Transportation Department on relinquishment of three right-of-way grants for material sites along US 93.
- A Material Sites Reclamation Plan would be prepared.

Wilderness and Wilderness Study Areas (WSAs)

Desired Future Conditions:

- Natural conditions in Wilderness and WSA, including air quality, dark night skies, and natural quiet, are substantially free of human influences.
- Air quality degradation and adverse impacts to air quality related values, particularly visibility, within the Class I Air Quality Craters of the Moon Wilderness Area do not occur.
- Future generations enjoy the enduring wilderness resources of the Craters of the Moon wilderness, including its conservation, scientific, cultural, educational, and recreational benefits.
- WSAs retain the wilderness values identified in the Wilderness Inventory and Study process.

Management Actions:

- NPS and BLM would develop a joint Wilderness/WSA management plan following completion of this plan.
- No additional wildlife water developments or other habitat manipulations would be undertaken to manage wildlife populations in Wilderness, WSAs, or the Preserve.
- Use of aircraft to survey and monitor wildlife populations could be continued, but flights would be scheduled to avoid high visitor use periods. Any landing of aircraft or dropping of supplies from aircraft in wilderness or WSA would be consistent with a minimum requirement and minimum tool analysis.
- Ways or travel routes within WSAs not identified during WSA inventories would be closed to motorized vehicles and rehabilitated.
- Minimum requirement analysis would precede all management activities within wilderness and WSAs.
- Should those portions of the Great Rift WSA adjacent to the original Monument be designated as wilderness, the 660-foot strip of non-wilderness between the Craters of the Moon Wilderness boundary and the original Monument boundary should be designated as Wilderness as well.
- Should Congress release any WSA from WSA status, then the area would be managed under the direction of this land use plan.

VISITOR EXPERIENCE

Interpretation / Visitor Understanding

Desired Future Conditions:

- The Monument builds and maintains positive relationships with visitor user groups and educational organizations.
- The public perceives the Monument as a single entity and its management as a model of public service.
- The public understands and appreciates the area's natural and cultural resources, including its history and uses.
- The public has access to Monument information and learning opportunities, both on and off site.
- Information/orientation materials such as travel maps, safety bulletins, resource information, and recreation information are available.
- Visitors are offered a variety of interpretive media within the Frontcountry Zone.

Management Actions:

- A Comprehensive Interpretive Plan for the Monument would be developed.
- Educational programs for schools would focus on programs on site in the original NPS-administered Monument. A number of programs (summer and winter) aimed at special users would be presented each year.
- Both agencies would coordinate services to meet the needs of permittees, visitors, students, educators, interest groups, and the general public.
- Developed facilities such as the Visitor Center at the original NPS Monument would continue to be provided.
- Informational/orientation materials dealing with recreation, maps, safety, and resource concerns would be posted on kiosks located at all primary backcountry access points surrounding the Monument and at Carey and Kimama fire stations.
- A variety of interpretive media for on- and off-site use would continue to be developed. Interpretive programs and the maintenance of exhibits and waysides would continue.
- Monument staff would continue to promote visitor safety and resource protection.
- Existing roads, trails, and facilities would be maintained and new facilities would be provided as appropriate in the Frontcountry Zone for resource protection and visitor enjoyment.



Recreation

Desired Future Conditions:

- Opportunities are available for diverse recreation experiences, consistent with the intent of Monument proclamations and applicable laws.
- Public awareness of responsible low impact recreational use reduces or eliminates the need for restrictive management policies.
- Public awareness of area hazards, along with an attitude of self-reliance and personal safety, substantially reduces the need for restrictive management policies.
- Impacts associated with recreational uses do not adversely affect the physical and visual integrity of geologic features.
- NPS, BLM, and external partners provide the public accurate and consistent information on recreational opportunities throughout the Monument.
- The area continues to offer a range of opportunities for discovery.
- Responsible low impact recreational use allows for relatively unrestricted recreational opportunities throughout much of the Monument.
- Within the Pristine Zone, public opportunities to experience solitude, natural quiet/night sky, and views of landscapes remain substantially free of human influence.

Management Actions:

- Idaho's State Comprehensive Outdoor Recreation and Tourism Plan (SCORTP) (2003) and the Idaho Outdoor Recreation Demand Assessment would be utilized in implementation-level planning to assist managers in understanding the recreational use patterns, trends, and recreation facilities needed for the area.
- Resources and areas most vulnerable to vandalism, theft, and/or recreation use impacts would be inventoried.
- *Leave No Trace* and *Tread Lightly!* programs would be promoted with staff and the public.
- Programs would promote wilderness and backcountry ethics.
- Information/orientation materials such as travel maps, safety bulletins, resource information and recreation information would be conveniently available.
- The agencies, in consultation with the State of Idaho, could designate areas within the Preserve and periods of time when no hunting and/or use of firearms would be permitted for reasons of public safety, administration, and/or public use and enjoyment.
- Permits would be required for overnight camping in the Wilderness and/or biking or hiking in the original Monument area north of US 20/26/93.
- No wood fires would be permitted within the original Monument (campground sites provide grills for charcoal cooking only; wood fires permitted at group campsite).
- No hunting would be allowed in the original Monument.
- The agencies would continue to provide and promote cross-country skiing and snowshoeing activities along the 7-mile Loop Drive in the northern end of the Monument.

Visual Resources

Desired Future Conditions:

- Existing opportunities to experience solitude, dark night sky, and views of landscapes remain substantially free of human intrusions.
- A primitive and natural visual setting is retained.
- The visual integrity of the Goodale's Cutoff historic trail corridor remains protected.
- Management activities meet or exceed adopted Visual Resource Management (VRM) classes.

Management Actions:

- BLM and NPS managers should seek the cooperation of visitors, neighbors, and local government agencies to prevent or minimize impacts and prevent the loss of western landscape vistas and natural dark conditions.
- Existing waste dumps would be inventoried and cleaned up.

Soundscapes

Desired Future Conditions:

- Aircraft noise impacts are minimized.
- Existing opportunities to experience solitude and natural quiet remain substantially free of human intrusions.

Management Actions:

- Aircraft landings associated with commercial air tours would not be authorized within the Pristine Zone.
- The agencies would coordinate with the Department of Defense, Federal Aviation Administration, and the Idaho Department of Aeronautics regarding noise impacts.

SOCIAL AND ECONOMIC CONDITIONS

Desired Future Conditions:

- Gateway and other nearby communities benefit economically and socially from the presence of the Monument.

Management Actions:

- An intergovernmental coordinating group would be considered to ensure consistency of this plan with other state and local plans.
- The agencies would participate with interested communities in their planning for accommodating Monument visitors through their communities.

RESEARCH

Desired Future Conditions:

- The findings of scientific research enhance management decisions and increase public appreciation, and understanding of Monument resources.
- The research community and the Monument staff view the Monument as a productive outdoor laboratory.

Management Actions:

- In order to maintain a complete record of research activities, research and specimen collecting permits would be required for all projects. Standard Operating Procedures for the NPS permit process would be incorporated for the entire Monument.
- Varying means, including interdisciplinary and interagency research projects, would emphasize the use of the Monument as an outdoor laboratory for understanding the Great Rift ecosystem.
- BLM and NPS would facilitate the transfer of research information to the public.
- To the extent they are available, NPS and BLM facilities and staff assistance may be made available to qualified researchers and educational institutions conducting authorized studies or field classes.
- The agencies would coordinate the review and approval of research applications to confirm adherence to each agency's policy and to assure compatibility with the purposes for the Monument.
- The agencies would work with interested partners in sponsoring a symposium or similar forum for sharing information on past research and helping identify future research needs and opportunities.



ALTERNATIVE A (NO ACTION ALTERNATIVE)

ALTERNATIVE CONCEPT

The No Action Alternative (Alternative A) is required by the NEPA and provides the baseline against which to compare the other alternatives. Under this alternative, current management practices would continue as funding allows. Existing visitor facilities would be maintained to support current activities.

Following the expansion of the Monument, the agencies were directed to follow the directives of Proclamation 7373 and the Interim Management Guidelines issued pursuant to the Proclamation. Alternative A (No Action Alternative) would continue the current management direction, guided by the Proclamation, and Interim Management Guidelines (see Appendix B), as well as existing laws and policy. Current direction includes the five existing land use plans that were in place prior to Proclamation 7373: the Sun Valley Management Framework Plan (1981), the Monument Resource Management Plan (1985), the Big Desert Management Framework Plan (1981), the Craters of the Moon General Management Plan-NPS (1992), and the Big Lost Management Framework Plan (1983).

The key components of Alternative A (No Action Alternative) are as follows:

- Depicts current management under the five existing management plans as modified by Proclamation 7373, Public Law 107-213, and the agencies' Interim Management Guidelines.
- Serves as a baseline for comparison with the other three alternatives.
- Responds to those public comments favoring keeping things as they are.

MANAGEMENT ZONES

Although the Monument is not currently zoned as depicted, management zones were established for the purposes of this planning process. Figure 4 depicts

the zones based on the agencies' best understanding of where the zone boundaries would be located under Alternative A (No Action Alternative). Figure 4 also shows the zone allocations that would occur under Alternative A (No Action Alternative).

As can be seen on Figure 4, the Frontcountry Zone coincides with the high-use visitor areas: the Visitor Center/Loop Drive area and US 20/26/93 along the northern boundary of the Monument. The Passage Zone includes a few other main access roads in Laidlaw Park, the portion of the Carey-Kimama Road that goes through the Monument, the southern portion of the Arco-Minidoka Road within the Monument, and a small area at Kings Bowl. The Passage Zone designation is appropriate for these areas since they are the primary travel and access routes within the Monument. They have some signs and facilities used by visitors who are sightseeing, hiking, or accessing camping or day-use areas and they contain many livestock-oriented facilities such as sheep bed grounds, fences, water troughs, and corrals.

The Pristine Zone under Alternative A (No Action Alternative) appropriately includes the undisturbed lava flows, while the Primitive Zone was appropriate for the remainder of the Monument and Preserve, which consists of relatively large expanses with few facilities located between the lava flows and travel corridors. The Primitive Zone includes lands currently used for dispersed recreation and primitive camping only, with mostly two-track dirt roads.

MANAGEMENT GUIDANCE FOR ALTERNATIVE A

Alternative A (No Action Alternative) would incorporate all of the "Management Guidance Common to All Alternatives" previously described, plus the following alternative-specific guidance.

VEGETATION, INCLUDING SPECIAL STATUS SPECIES, AND FIRE MANAGEMENT

Desired Future Conditions:

- Existing and potential sagebrush steppe communities within the Monument are protected and restored, with an emphasis on Key sage-grouse habitat in Laidlaw Park, Little Park, and Paddelford Flat.

Management Actions:

- Approximately 40,000 acres would be identified for proactive restoration and/or post-fire rehabilitation (5 percent of the entire Monument, 15 percent of BLM-administered land). This assumes the current rate of restoration, approximately 2,500 to 4,000 acres annually over the life of the plan. Approximately 31,000 acres of annual grassland and 9,000 acres of highly degraded low elevation sagebrush steppe (poor to fair biotic integrity; see Figure 15) would be treated to control cheatgrass and restore big sagebrush cover with a perennial understory.
- All wildland fires within the Preserve and BLM portion of the Monument would be managed in accordance with current BLM land use plans.
- Wildland fire within the original Monument would be managed according to the NPS Wildland Fire Management Plan (2000) that permits use of naturally ignited wildland fires for resource benefit (wildland fire use) in the Wilderness area under specific conditions.

CULTURAL RESOURCES

Desired Future Conditions:

- Same as "Common to All."

Management Actions:

- A minimum of 5 percent of the Monument would be intensively inventoried (Section 110 National Historic Preservation Act [NHPA]) for cultural resources over the life of the plan.
- Some interpretation of archaeological and historic sites would continue (e.g., Goodale's Cutoff, Baker Cave, and Indian Tunnel).

TRAVEL AND ACCESS

Desired Future Conditions:

- Same as "Common to All." (Most management direction for the desired condition for Alternative A [No Action Alternative] is reflected in the management zone depiction – see Table 2.)

Management Actions - The following objectives would guide the drafting of an implementation-level Comprehensive Travel Management Plan that will follow.

- Authorized roads and trails would continue to be maintained to current standards.
- New trails could be developed within the NPS-administered portion of the Monument and within the area presently zoned as "park and interpretive development" in the 1992 General Management Plan.
- Trails in the Kings Bowl area would be maintained or rehabilitated to prevent further resource damage.
- All existing roads and trails within the Monument that were legally open to vehicle travel prior to Proclamation 7373 would remain open, although the agencies may close individual roads and trails temporarily to protect resources on a case-by-case basis.

FACILITIES

Desired Future Conditions:

- Administrative and visitor facilities continue to be restricted to an area of approximately 92 acres in the north end of the Monument adjacent to US 20/26/93. This area includes lands adjacent to the 7-mile paved Loop Drive.

Management Actions:

- The kiosks located along roads leading into the Monument and a few information and directional signs in the interior would continue to be maintained and replaced as necessary.
- Visitor safety and information signs would be provided in the Kings Bowl area.

RECREATION

Desired Future Conditions:

- Same as "Common to All."

Management Actions:

- Existing authorized roads in the Pristine Zone would remain open to motorized and mechanical vehicle travel.

VISUAL RESOURCES

Desired Future Conditions:

- Same as "Common to All."

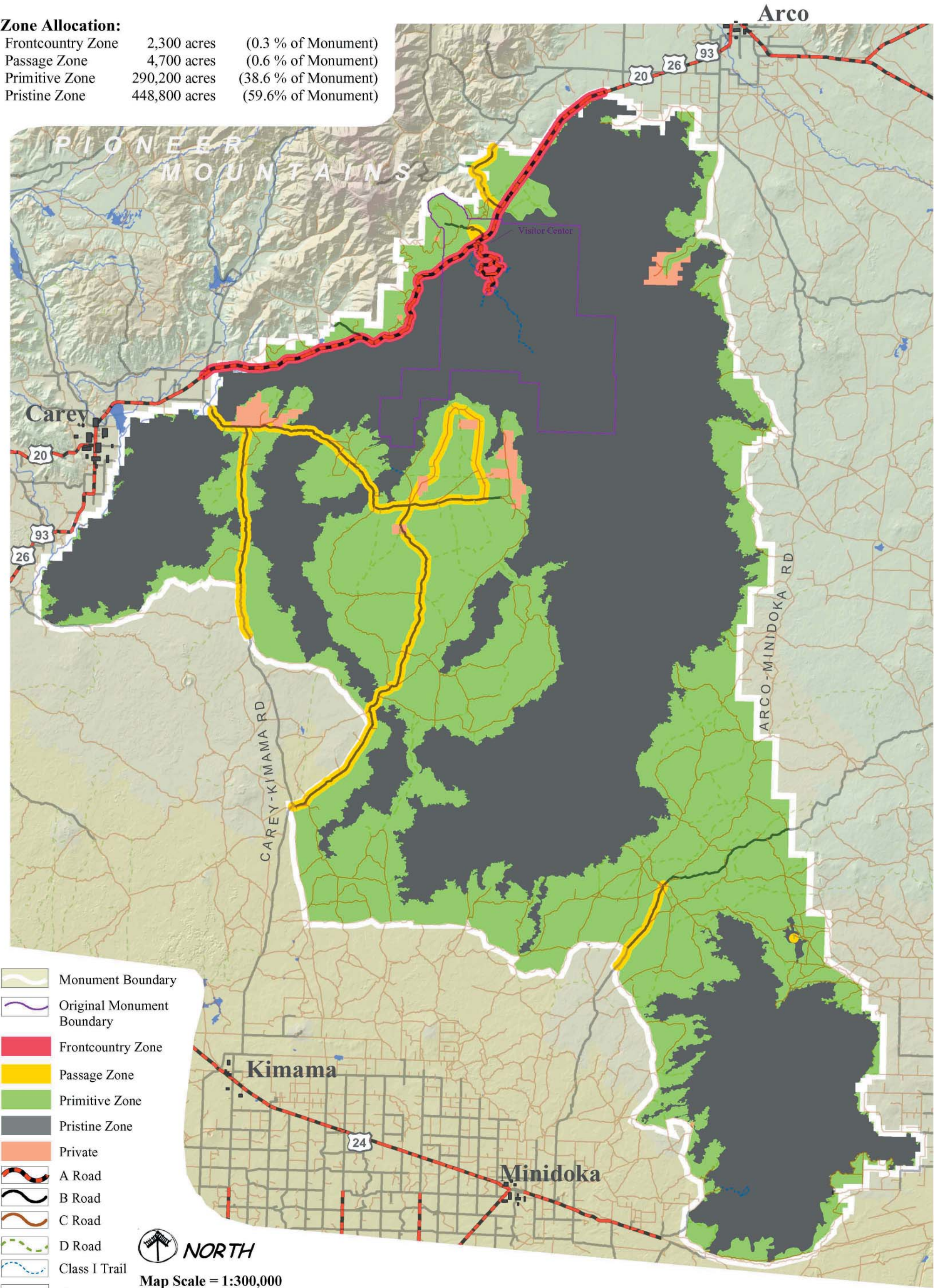
Management Actions:

- VRM inventory classes would be designated as management classes as shown on Figure 5



Zone Allocation:

Frontcountry Zone	2,300 acres	(0.3 % of Monument)
Passage Zone	4,700 acres	(0.6 % of Monument)
Primitive Zone	290,200 acres	(38.6 % of Monument)
Pristine Zone	448,800 acres	(59.6% of Monument)



Frontcountry, Passage, and Primitive Zone corridors have been oversized for graphic presentation and are not to scale. No warranty is made by the Bureau of Land Management or National Park Service for use of the data for purposes not intended by these agencies.



The following are the definitions of classes of Visual Resource Management, as depicted in Figures 5 and 7.

- Class I – The objective of this class is to preserve the existing character of the landscape. Any contrast created within the characteristic landscape must not attract attention. This classification is applied by policy to Visual ACECs, wilderness and WSAs, Wild and Scenic Rivers, and other similar situations.
- Class II – The objective of this class is to retain the existing character of the landscape. Changes in any of the basic visual elements caused by management activity should not be evident in the landscape. A contrast may be seen but should not attract attention.
- Class III – The objective of this class is to partially retain the existing character of the landscape. Contrasts to the basic elements caused by a management activity may be evident and begin to attract attention in the landscape. The changes, however, should

remain subordinate in the existing landscape.

- Class IV – The objective of this class is to provide for management activities that require major modification of the existing character of the landscape. Contrasts may attract attention and be a dominant feature in the landscape in terms of scale. However, the change should repeat the basic element of the landscape.

Table 2 summarizes where the various types of roads and trails that currently exist would fall within the management zones as they have been located under Alternative A. Road and trail classification is based on the inventoried condition and maintenance standards for roads and trails as of 2003; refer to Chapter 3 for a description of the road and trail classifications. These decisions will be made in an implementation plan that will follow. Under Alternative A, the intent is to maintain the road network in its current condition and road classification.

Table 2
Alternative A (No Action Alternative) – Road and Trail
Distribution by Management Zone

Road Classification	MANAGEMENT ZONES*				Total Miles
	Frontcountry	Passage	Primitive	Pristine	
Class A	30	0	0	0	30
Class B	0	45	12	0	57
Class C	2	14	344	1	361
Class D	0	2	166	1	169
Class I Trails	7	0	0	7	14
Total Miles	39	61	522	9	631

*Approximate miles of existing roads and trails within each zone rounded to the nearest whole number.

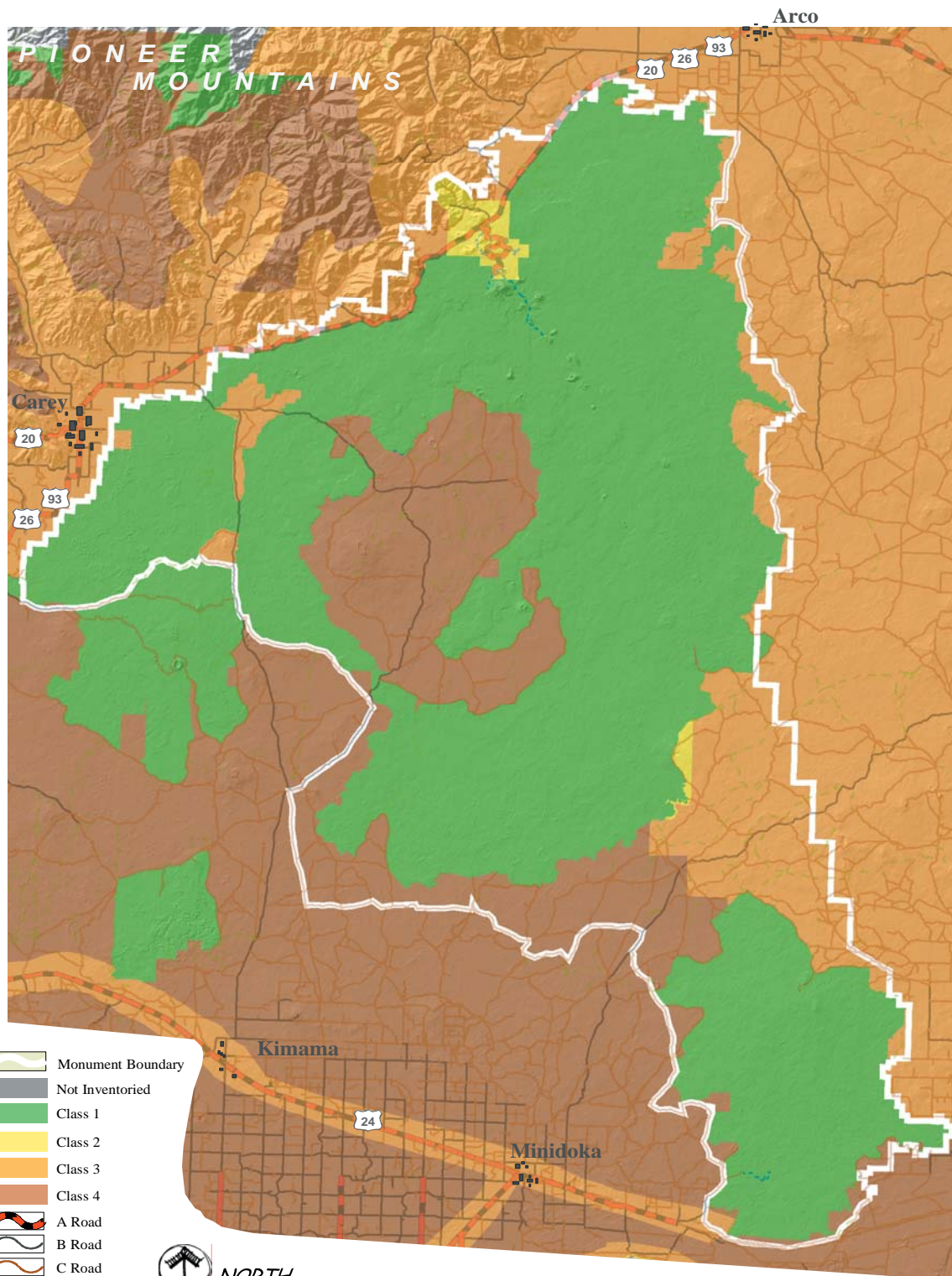


FIGURE 5

**VISUAL RESOURCE MANAGEMENT CLASSIFICATION
ALTERNATIVE A (No Action Alternative)**

Craters of the Moon National Monument & Preserve

U.S. Department of the Interior * National Park Service * Bureau of Land Management

No warranty is made by the Bureau of Land Management or National Park Service for use of the data for purposes not intended by these agencies.



ALTERNATIVE B

ALTERNATIVE CONCEPT

This alternative would optimize opportunities to experience the Monument, offer a wide range of recreational opportunities and experiences, and perpetuate historic use patterns. It would promote more travel and access within the Monument and provide for more extensive educational and directional signage throughout the Monument. One emphasis would be on maintaining a strong interpretation and education program for visitors within the Monument to help protect resources, maintain a safe visitor experience, and minimize conflicts with traditional uses. This alternative represents the highest accommodation of visitor access to, and within, the Monument.

The key components of Alternative B are as follows:

- Provides the greatest number of multiuse trail opportunities.
- Provides extensive educational and directional signs throughout the Monument.
- Allocates large areas in the Passage Zone instead of only narrow corridors.
- Proposes travel corridors outside the Monument boundary to provide consistent road standards and access to and through the Monument, including the Carey-Kimama, Arco-Minidoka, and American Falls-Kings Bowl roads.

MANAGEMENT ZONES

Figure 6 depicts the zones based on the agencies' best understanding of where the zone boundaries would be located under Alternative B. Figure 6 also shows the zone allocations that would occur under Alternative B.

As Figure 6 indicates, under Alternative B the Frontcountry Zone would remain primarily the same as under Alternative A (No Action Alternative). A small area immediately surrounding the existing facilities at the Crystal Ice Caves/Kings Bowl area

would be added to the Frontcountry Zone. However, the biggest emphasis would be on the Passage Zone, which would be greatly expanded to include an area north of US Highway 20/26/93, all of the Carey-Kimama and Arco-Minidoka roads (approximately 9,000 acres outside of the Monument), a network of roads leading to and through Laidlaw Park, and two relatively large areas in Laidlaw Park and between the Craters of the Moon and Wapi lava flows. These areas were designated as Passage Zone to facilitate access to several areas of the Monument, thereby providing for a broad range of visitor experience and recreation opportunities within the Monument. In cooperation with the local jurisdictions, primary access roads such as the Carey-Kimama and Arco-Minidoka roads would be designated as Backcountry Byways and upgraded to a consistent Class B standard. This would require collaboration with adjacent county governments. Passage Zone designation in these areas also allows for more new facilities including wayside exhibits, trailheads, parking areas, trail systems, day-use facilities, and designated campsites.

With the increase in Passage Zone provided in Alternative B, there would be a corresponding decrease in Primitive Zone areas, with the Pristine Zone allocation remaining about the same as under Alternative A (No Action Alternative). Essentially, Alternative B trades Primitive Zone and associated primitive-type visitor uses for the opportunity to provide an expanded Passage Zone that would allow for increased and/or improved access for visitors to many more areas within the Monument.

MANAGEMENT GUIDANCE FOR ALTERNATIVE B

Alternative B would incorporate all of the "Management Guidance Common to All Alternatives" previously described, plus the following alternative specific guidance.

GEOLOGICAL RESOURCES

Desired Future Conditions:

- Same as "Common to All."

Management Actions:

- A restoration program would be initiated to remove graffiti from caves and foster public understanding of the need for cave resource protection.
- Trails to key geological features would be considered to mitigate resource impacts from user-created trails.

VEGETATION, INCLUDING SPECIAL STATUS SPECIES, AND FIRE MANAGEMENT

Desired Future Conditions:

- Fire is allowed to function as a natural process in the Wilderness and Preserve.

Management Actions:

- Approximately 45,000 acres would be identified for proactive restoration and/or post-fire rehabilitation treatment (6 percent of the entire Monument, 16 percent of BLM-administered). Approximately 31,000 acres of annual grassland and 14,000 acres of highly degraded low elevation sagebrush steppe (poor to fair biotic integrity; see Figure 15) would be treated to control cheatgrass and restore big sagebrush cover with a perennial understory.
- Restoration projects would be an opportunity for interpretation on the decline of sagebrush steppe and efforts to restore this dwindling resource.
- Proactive fuels management activities would be undertaken to offset the potential effects of increased public use as a result of improvements to roads and facilities.
- Integrated Weed Management would have a heightened emphasis on treatment/containment, prevention, and education, particularly in Frontcountry and Passage Zones.
- Wildland fire use would be allowed in the Wilderness and Preserve except when incompatible with resource management objectives or when there would be danger to life or property.
- Limited prescribed fire (<500 acres) would be used in the aspen, conifer, and mountain shrub vegetation types to improve wildlife habitat and invigorate plant communities while protecting the Little Cottonwood Watershed.

WILDLIFE

Desired Future Conditions:

- Same as "Common to All."

Management Actions:

- Consistent with Rangeland Health Standards & Guidelines determinations, livestock grazing management would be modified as necessary to ensure that Key sage-grouse habitat achieves site potential.
- Roads in Key sage-grouse habitat found in the Primitive Zone would be closed to motor vehicles during the sage-grouse breeding season (generally March and April but specific dates would be modified to reflect actual use in the Preserve) and between 1 a.m. and 11 a.m.
- Active leks would be protected from disturbance during the sage-grouse breeding season.

CULTURAL RESOURCES

Desired Future Conditions:

- Same as "Common to All."

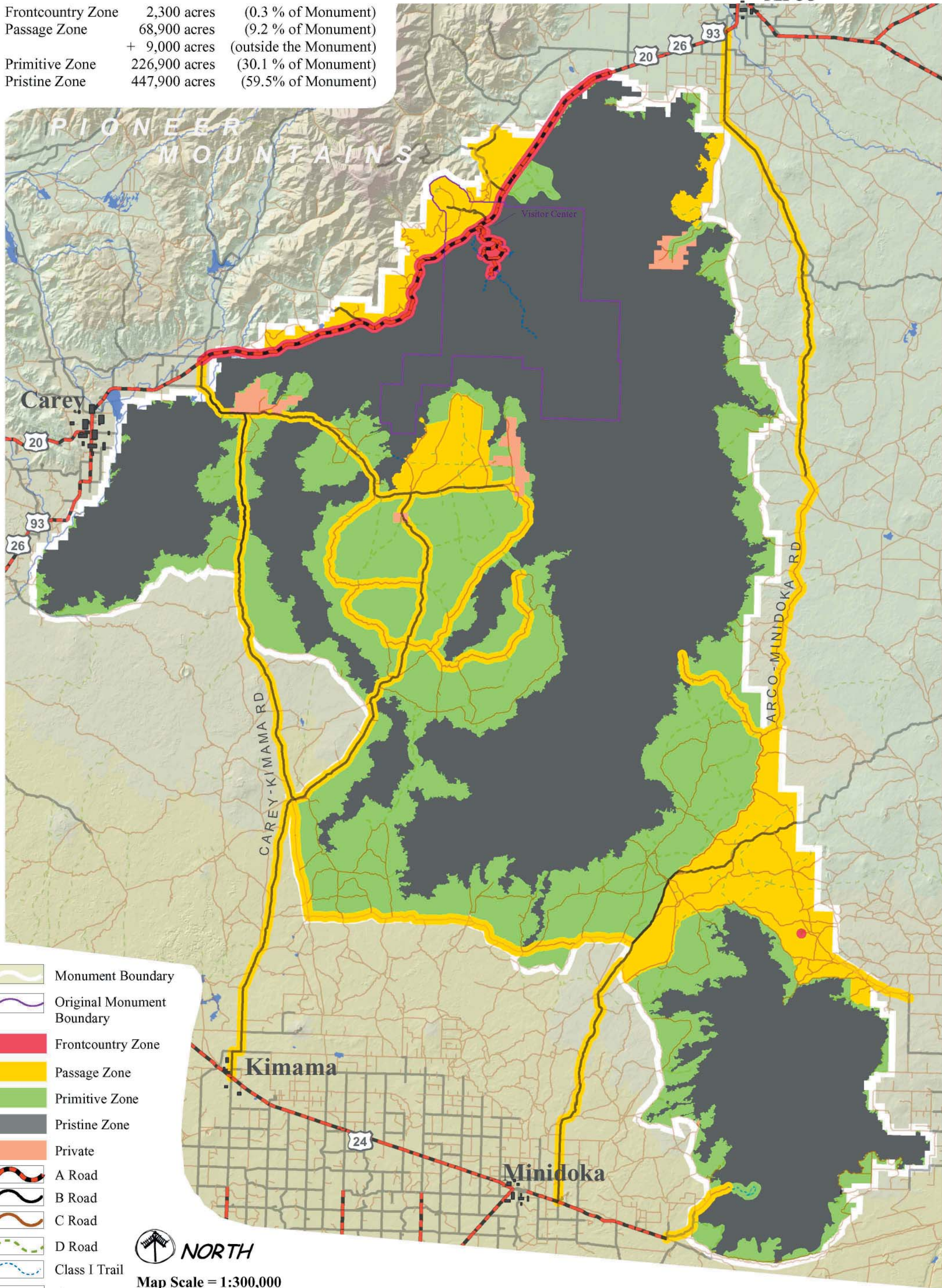
Management Actions:

- In response to increased access, public education and interpretation of cultural resources would be emphasized and provided at various dispersed recreation sites.
- Emphasis would be on increased Section 110 inventory in the Passage Zone.
- A minimum of 10 percent of the Monument would be intensively inventoried (Section 110 NHPA) for cultural resources over the life of the plan.
- Site monitoring and site protection measures, such as physical barriers, would be emphasized at various dispersed recreation sites.



Zone Allocation:

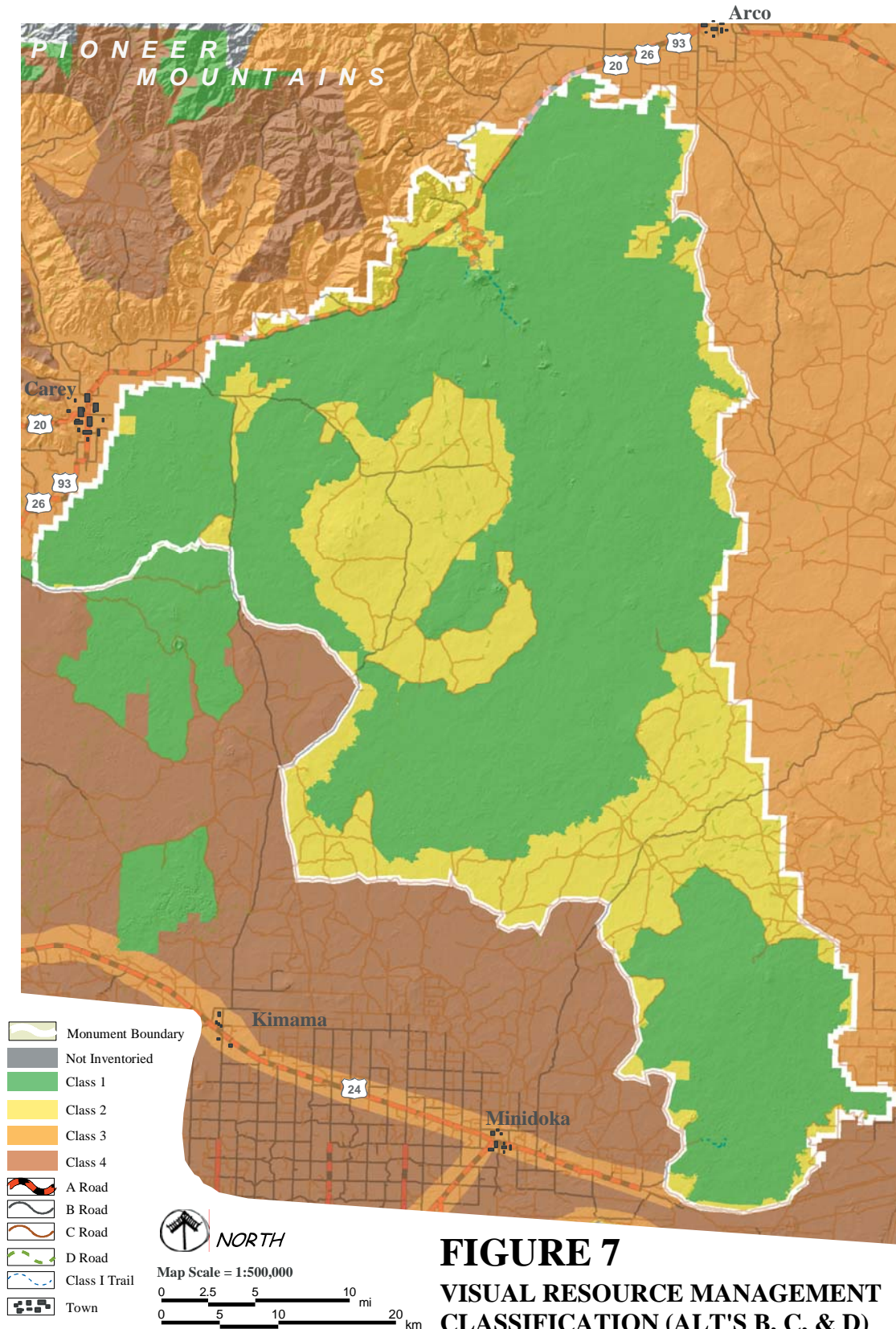
Frontcountry Zone	2,300 acres	(0.3 % of Monument)
Passage Zone	68,900 acres	(9.2 % of Monument)
	+ 9,000 acres	(outside the Monument)
Primitive Zone	226,900 acres	(30.1 % of Monument)
Pristine Zone	447,900 acres	(59.5 % of Monument)



Frontcountry, Passage, and Primitive Zone corridors have been oversized for graphic presentation and are not to scale. No warranty is made by the Bureau of Land Management or National Park Service for use of the data for purposes not intended by these agencies.

FIGURE 6
ALTERNATIVE B
Craters of the Moon National Monument & Preserve
 U.S. Department of the Interior * National Park Service * Bureau of Land Management





No warranty is made by the Bureau of Land Management or National Park Service for use of the data for purposes not intended by these agencies.

TRAVEL AND ACCESS

Desired Future Conditions:

- The road and trail system within the planning area provides a high level of access to a wide variety of destinations, recreational activities, and both Class 1 and Class 2 trails.
- Within the four Passage Zone areas, multiuse trail systems and associated educational and directional signs/waysides are established.
- The desired condition for Alternative B is reflected in the management zone allocation (see Table 3).

Management Actions:

- The Carey-Kimama and Arco-Minidoka roads would be designated as Backcountry Byways over their entire length including portions outside the Monument.
- The Carey-Kimama and Arco-Minidoka roads would be upgraded and maintained to a consistent Class B Standard over their entire length including portions outside the Monument.
- A trail system would be improved at the Kings Bowl area and to additional points of interest.
- Multiuse and single-use (e.g., ATV, equestrian, bicycling, walking) trail routes would be designated.

FACILITIES

Desired Future Conditions:

- Same as "Common to All."

Management Actions:

- New facilities at the NPS headquarters visitor center would be expanded or developed to enhance visitor understanding and accommodate increased visitation.

INTERPRETATION / VISITOR UNDERSTANDING

Desired Future Conditions:

- Increased opportunities for educational opportunities are created throughout the Monument.

Management Actions:

- Additional interpretive facilities would be provided along the corridor of US 20/26/93 and at significant sites within the Passage Zone.
- Interpretive kiosks, wayside exhibits, and associated trail system and day-use area in the Kings Bowl area would be upgraded.
- A variety of portable media (maps, tapes, guidebooks, etc.) would be developed to interpret the expanded portion of the Monument.
- Educational programs for school groups visiting the Monument would be expanded.

RECREATION

Desired Future Conditions:

- Diverse and accessible recreational opportunities and experiences are available throughout the Monument.
- A relatively large amount and wide variety of designated motorized recreation opportunities and experiences are available throughout the Monument.

Management Actions:

- Implementation-level planning would make determinations as to where specific trails, trailhead facilities and/or number of rustic designated campsites would be needed or desired within the Passage Zone. Up to 12 locations could be developed for camping within the Passage Zone.
- In areas in which adverse impacts on resources or the visitor experience occur, limits on human activities could be set. These limits could affect areas of use, group size, and duration of stay, number of people or vehicles, or types of activities.
- Increased opportunities would be provided to experience a wide range of recreation trail uses (e.g. ATV, equestrian, bicycling, walking).

VISUAL RESOURCES

Desired Future Conditions:

- Same as "Common to All."

Management Actions:

- VRM inventory classes would be designated as management classes as shown on Figure 7.



Table 3 summarizes the number of miles of roads and trails by classification under each management zone as proposed under Alternative B. Road and trail classification is based on the inventoried condition and maintenance standards for roads and trails as of 2003. Because management zones are a prescription for desired future conditions, road classification would be expected to change over the life of the management plan to achieve the “Desired Future Conditions” and “Management Actions” for this

alternative. These changes would be addressed in the Comprehensive Travel Management Plan. Note that there is an increase in Passage Zone mileage and a corresponding decrease in Primitive Zone road mileage compared to Alternative A (No Action Alternative). Some of the Class C and D roads now located within the Passage Zone areas could be improved to facilitate access and/or converted to Class I and II trails.

Table 3
Alternative B – Road and Trail Inventory by Management Zone

Road Classification	MANAGEMENT ZONES*				Total Miles ¹ (Inside/Outside)
	Frontcountry	Passage ¹ (Inside / Outside)	Primitive	Pristine	
Class A	30	0 / 0	0	0	30 / 0
Class B	0	57 / 81	0	0	57 / 81
Class C	2	166 / 56	184	1	353 / 56
Class D	0	39 / 1	127	1	167 / 1
Class I Trails	7	0 / 0	3	4	14 / 0
Total Miles	39	262 / 138	314	6	621 / 138

*Approximate miles of existing roads and trails within each zone rounded to the nearest whole number.

¹Under Alternative B, portions of the Carey-Kimama and Arco-Minidoka roads that lie outside the Monument boundaries and provide key Monument access are included in the Passage Zone. This would require coordination with the surrounding county governments.

ALTERNATIVE C

ALTERNATIVE CONCEPT

Under Alternative C, there would be emphasis on retention and enhancement of the Monument's primitive character, with minimal visitor facilities or services outside the Frontcountry Zone, and less intensive management to influence resource conditions. More acres would be allocated to the Pristine Zone as compared to the other alternatives. This alternative would emphasize "opportunities for solitude" and provide a more primitive setting for recreational, educational, and management activities. It would offer protection for geologic and cultural resources and features by limiting access and development.

The key components of Alternative C are as follows:

- Would have the largest acreage in the Pristine Zone and least acreage in the Passage Zone.
- Maintains the fewest miles of roads and least amount of road access to the edge of the lava flows.
- Limits the amount of interpretation activities and number of information signs within the expanded Monument.
- Relies on the least intrusive methods of resource management, including sagebrush steppe restoration.
- Includes an ACEC designation in North Laidlaw Park to provide special protective management for native sagebrush steppe.

MANAGEMENT ZONES

Figure 8 depicts the zones based on the agencies' best understanding of where the zone boundaries would be located under Alternative C. Figure 8 also shows the zone allocations that would occur under Alternative C.

Under Alternative C, the Frontcountry Zone would remain the same as under Alternative A (No Action Alternative), and the Passage Zone would be reduced, particularly in Laidlaw Park and along

the Arco-Minidoka Road. The biggest change from Alternative A (No Action Alternative) would be the increase in Pristine Zone including Laidlaw Park and the vegetated portions of Wilderness Study Areas.

The reasons for the increased Pristine Zone allocation in these areas under Alternative C are to provide for a more primitive visitor experience; to de-emphasize facilities, services, and easy access; and to emphasize retention and enhancement of the Monument's primitive character. With the expanded Pristine Zone areas, there would be less access to the edge of the lava flows and fewer maintained roads, resulting in a resource protection strategy relying on limited access.

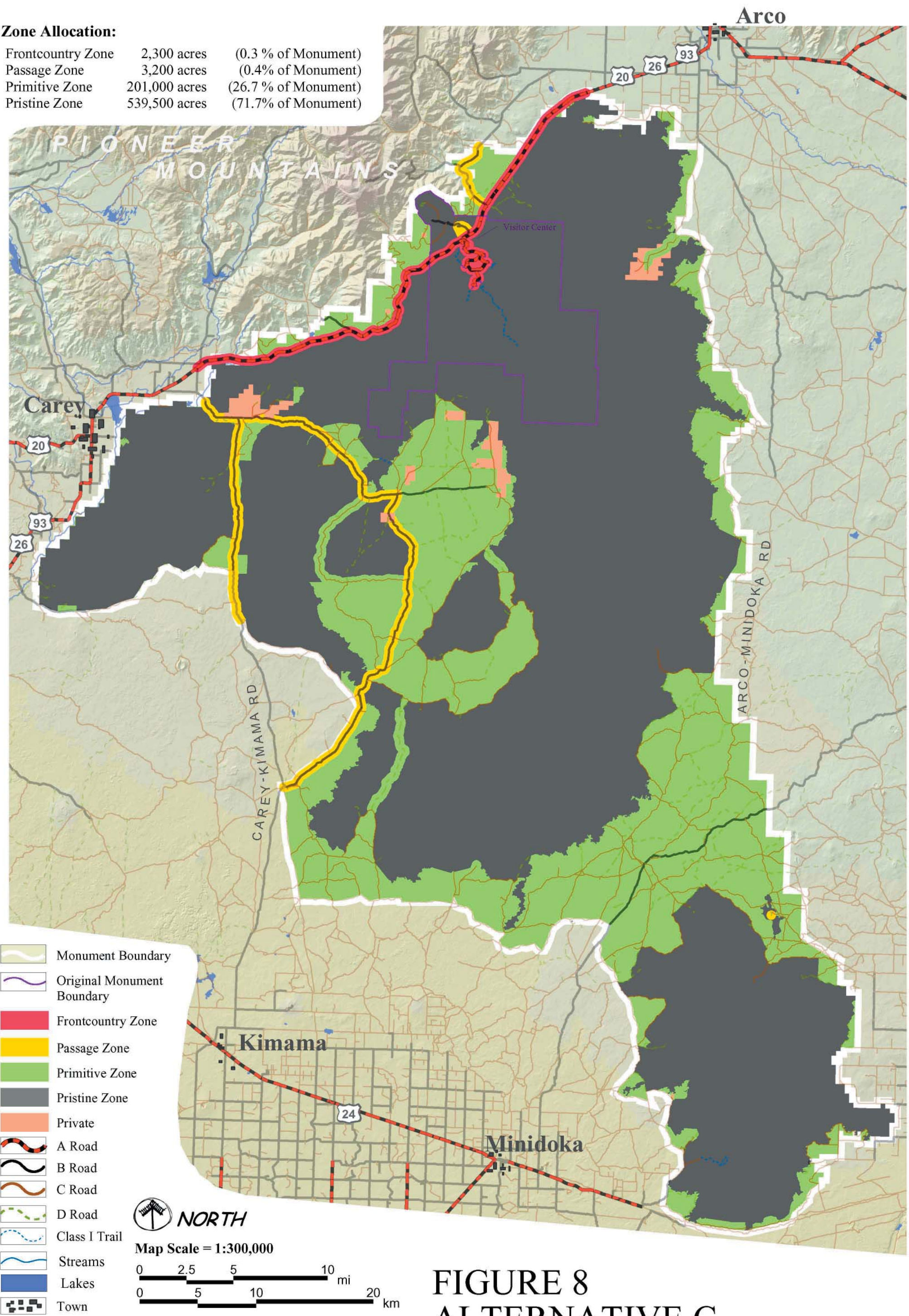
MANAGEMENT GUIDANCE FOR ALTERNATIVE C

Alternative C would incorporate all of the "Management Guidance Common to All Alternatives" previously described, plus the following alternative-specific guidance.



Zone Allocation:

Frontcountry Zone	2,300 acres	(0.3 % of Monument)
Passage Zone	3,200 acres	(0.4% of Monument)
Primitive Zone	201,000 acres	(26.7 % of Monument)
Pristine Zone	539,500 acres	(71.7% of Monument)



Frontcountry, Passage, and Primitive Zone corridors have been oversized for graphic presentation and are not to scale. No warranty is made by the Bureau of Land Management or National Park Service for use of the data for purposes not intended by these agencies.



GEOLOGICAL RESOURCES

Desired Future Conditions:

- Same as "Common to All."

Management Actions:

- A limited restoration program would be initiated to remove graffiti from caves and foster public understanding of the need for cave resource protection.
- Site development to facilitate access to caves would be limited to existing infrastructure and programs. Management of all other caves, including Crystal Ice Cave, would emphasize natural conditions.

VEGETATION, INCLUDING SPECIAL STATUS SPECIES, AND FIRE MANAGEMENT

Desired Future Conditions:

- Sagebrush steppe communities are protected and restored in Passage and Primitive Zones.
- Greater continuity of habitat for special status species and general wildlife is emphasized.
- Fire is allowed to function as a natural process in the Wilderness and Preserve.

Management Actions:

- Approximately 55,000 acres (7 percent of the entire Monument, 20 percent of BLM-administered) would be identified for proactive restoration treatment and/or post-fire rehabilitation. Approximately 31,000 acres of annual grassland and 24,000 acres of highly degraded low elevation sagebrush steppe (poor to fair biotic integrity; see Figure 15) would be treated to control cheatgrass and restore big sagebrush cover with a perennial understory.
- Non-chemical methods of weed control would be emphasized, while not ruling out herbicide use.
- Less intensive treatment methods would be used for restoration and rehabilitation employing minimum tool constraints and "light handed" non-intrusive technology.
- Larger, more continuous acreages would be treated for restoration.
- Wildland fire use would be allowed in the Wilderness and Preserve except when incompatible with resource management objectives or danger to life or property.
- Limited prescribed fire (<500 acres) would be used in the aspen, conifer, and mountain shrub vegetation types to improve wildlife habitat and invigorate plant communities while protecting the Little Cottonwood Watershed.

WILDLIFE

Desired Future Conditions:

- Same as "Common to All."

Management Actions:

- Consistent with Rangeland Health Standards & Guidelines determinations, livestock grazing management would be modified as necessary to ensure that Key sage-grouse habitat achieves site potential.
- Active and historic leks would be protected from disturbance during the sage-grouse breeding season.
- All roads in Key sage-grouse habitat would be closed to the general public between 1 a.m. and 11 a.m. during the sage-grouse breeding season.

CULTURAL RESOURCES

Desired Future Conditions:

- Same as "Common to All."

Management Actions:

- A minimum of 10 percent of the Monument would be intensively inventoried (Section 110 NHPA) for cultural resources over the life of the plan.
- The focus of the Section 110 inventory would be in the Primitive and Pristine Zones.

TRAVEL AND ACCESS

Desired Future Conditions:

- There is a net decrease in road mileage within the Monument.
- The road and trail system within the planning area provides the visitor opportunities for challenge, risk, and adventure with limited improved access to destinations.
- Most management direction related to travel and access is covered by management zone allocation (see Table 4).

Management Actions:

- All roads and ways within the Pristine Zone would be closed to all motorized and mechanized vehicle use except authorized emergency and administrative use.
- Many Class D roads in the Primitive Zone would be converted to non-motorized trails.
- Road closures will be addressed in an implementation plan to follow.
- Many existing directional road signs would be removed or not replaced, promoting the idea of unsigned and self-directed motorized recreation opportunities.

FACILITIES

Desired Future Conditions:

- Same as "Common to All."

Management Actions:

- Any new facilities would be limited to what may be necessary for public safety and/or resource protection.
- There would be no new developments in the North Pasture of Laidlaw Park Allotment, unless it results in a net benefit to those resources identified as needing improvement or protection.

SPECIAL DESIGNATION AREAS (ACECs only)

Desired Future Conditions:

- The integrity of native plant communities in North Laidlaw Park (north of E/W pasture fence) is maintained.

Management Actions:

- North Laidlaw Park (north of E/W pasture fence) would be designated as an ACEC.

INTERPRETATION / VISITOR UNDERSTANDING

Desired Future Conditions:

- A minimum of visitor services is provided except in the existing developed area of the north end Visitor Center and Loop Drive. This alternative provides the most opportunities for a self-discovery experience.

Management Actions:

- A variety of portable interpretive media (maps, tapes, guidebooks, etc.) would be developed to interpret the expanded portion of the Monument.

RECREATION

Desired Future Conditions:

- The public enjoys the most extensive opportunities of all the alternatives for self-discovery and primitive type recreation experiences.
- Unsigned and self-directed motorized recreation opportunities are available.

Management Actions:

- Implementation-level planning would make determinations as to where specific trails, trailhead facilities and/or number of primitive campsites would be needed or desired within the Passage Zone. Up to four locations could be developed for camping within the Passage Zone.

VISUAL RESOURCES

Desired Future Conditions:

- Same as "Common to All."

Management Actions:

- VRM inventory classes would be designated as management classes as shown on Figure 7.



Table 4 summarizes the number of miles of roads and trails by classification under each management zone as proposed under Alternative C. Road and trail classification is based on the inventoried condition and maintenance standards for roads and trails as of 2003. Because management zones are a prescription for desired future conditions, road classification would be expected to change over the life of the management plan to achieve the “Desired Future Conditions” and “Management Actions” described

for this alternative. These decisions will be dealt with in the Comprehensive Travel Management Plan to follow. Note that there is a decrease in Passage and Primitive zone road mileage and a corresponding increase in Pristine Zone road mileage compared to Alternative A (No Action Alternative). Many of the roads now located in the Pristine Zone would be closed to unauthorized motorized use or converted to Class I trails over the life of the plan.

Table 4
Alternative C – Road and Trail Inventory by Management Zone

Road Classification	MANAGEMENT ZONES*				Total Miles
	Frontcountry	Passage	Primitive	Pristine	
Class A	30	0	0	0	30
Class B	0	37	18	2	57
Class C	2	2	345	12	361
Class D	0	1	127	41	169
Class I Trails	7	0	0	7	14
Total Miles	39	40	490	62	631

*Approximate miles of existing roads and trails within each zone rounded to the nearest whole number.

ALTERNATIVE D (PROPOSED PLAN)

ALTERNATIVE CONCEPT

This alternative is a slightly modified version of the Alternative D presented in the Draft Plan/EIS. It was developed in response to public comments that recommended an increase in Pristine Zone and a decrease in Passage Zone in order to help protect resources and limit access to sensitive areas. The primary emphasis of Alternative D remains the same as previously described in the Draft Plan/EIS: aggressive restoration of the sagebrush steppe community lands, including noxious weed control and fire management. Compared to other alternatives considered, Alternative D would target the most acreage for restoration and utilize aggressive management of weeds and fire to promote restoration of sagebrush steppe communities. In addition, commercial services (e.g., outfitters and guides) would be encouraged, and off-site visitor opportunities would be emphasized in this alternative. These commercial services would provide opportunities inside the Monument for visitors to experience and learn about the resources of the Monument. This would minimize the need for development and agency staffing within the Monument. This alternative would also encourage more off-site visitor experiences, in addition to providing visitor services in the developed portion of the Monument around the existing Visitor Center and 7-mile Loop Drive.

The modifications made to arrive at the Proposed Plan Alternative D included changing some previously designated Primitive Zone areas to Pristine Zone. This was done to address concerns about the protection of the interior of the lava flows, especially some specific geological and archaeological resources that could be accessed if Primitive Zone designations remained in or near these resources. Changing the designation to Pristine Zone near these resources and along the fringes of the lava fields would help to limit access from the main roads into the more sensitive interior. Therefore, the areas that were selected to be converted to Pristine Zone included those that were in good ecological

condition, generally located along the edge of the lava flows, or located where they would serve as buffers along more heavily used roadways, where a change to Pristine Zone would help to limit access to sensitive archaeological or geological resources. In some locations along the edges of the lava fields, areas of Primitive Zone that extended into the lava fields under Draft Alternative D were reduced in size and confined to road fringes only, and the former extensions were changed to Pristine Zone.

Recommendations to limit Passage Zone in Alternative D came mainly from concerns about the additional disturbance and habitat fragmentation that could occur in the Laidlaw Park area, given the number and loop configuration of the Passage Zone road corridors proposed in that area under the Draft Plan/EIS version of Alternative D. To address this concern, several road segments in that area were taken out of Passage Zone and put into the Primitive Zone category, to limit the amount of visitor use and habitat fragmentation in Laidlaw Park and to better protect that area's vegetation resources. The specific road segments that were taken out of Passage Zone were selected so as to reduce the undesirable effects, while maintaining one main Passage Zone loop through the area for visitor access. The segments that were removed from Passage Zone designation were:

- North Laidlaw Park Road
- West Laidlaw Park Road
- Laidlaw Butte Road
- Road into the "Thumb" or Bear Den Butte area

In addition, it was suggested that the Passage Zone formerly designated along the South Boundary Road be changed to Primitive Zone, and instead that additional Passage Zone be designated outside the Monument. This would encourage more visitor use in less sensitive areas, while facilitating visitor access to the popular recreational areas of the Monument. Therefore, the South Boundary Road was remapped as Primitive Zone, and the section of the Carey-Kimama Road outside the Monument and the Arco-Minidoka Road segment leading



to the southern boundary of the Monument were added to the Passage Zone under the Proposed Plan. Decisions regarding any changes (upgrades, closures, etc.) to the existing road inventory (refer to Figure 16, Transportation Network) will be made in a subsequent, more detailed Comprehensive Travel Management Plan.

Following the changes made to Alternative D, the key components of the Proposed Plan are as follows:

- Promotes use of partnerships at off-site facilities such as visitor centers and state parks to provide Monument information and interpretation.
- Emphasizes protection of vegetation resources in North Laidlaw Park.
- Maintains a road network suitable for aggressive fire suppression and restoration activities within the Monument.
- Encourages outfitter and guide services in the expanded portion of the Monument, instead of new agency-provided services and facilities.
- Promotes the largest and most proactive Integrated Weed Management Program.
- Proactively protects and restores sagebrush steppe communities.
- Continues to focus visitor experience within the Monument on the existing lands and facilities located at the north end of the Monument.

MANAGEMENT ZONES

Figure 9 depicts the zones based on the agencies' best understanding of where the zone boundaries would be located under Alternative D (Proposed Plan). Figure 9 also shows the zone allocations that would occur under Alternative D.

Under Alternative D (Proposed Plan), the Front-country Zone would remain the same as under Alternative A (No Action Alternative). Much of the increase in Passage Zone would occur from the additional proposed Passage Zone located outside the Monument boundaries. There would also be an increase in Pristine Zone, especially along the edges

of the lava fields. The road system included in the Passage Zone would allow access for the aggressive restoration of physical and biological resources and would facilitate fire suppression, especially in Laidlaw Park.

Recreational uses would continue. Road maintenance in the Passage Zone would be limited to what is needed for fire or resource protection. The Comprehensive Travel Management Plan will provide greater detail on road maintenance and a road sign plan. Alternative D's zone allocations were proposed as a means of achieving its aggressive resource protection and restoration goals, while addressing the public's concerns that sufficient Pristine Zone be designated under the selected alternative to provide protection for resources, especially in Laidlaw Park.

MANAGEMENT GUIDANCE FOR ALTERNATIVE D (PROPOSED PLAN)

Alternative D (Proposed Plan) would incorporate all of the "Management Guidance Common to All Alternatives" previously described, plus the following alternative-specific guidance.

GEOLOGICAL RESOURCES

Desired Future Conditions:

- Disturbed or degraded geologic features are identified and restored when feasible.

Management Actions:

- An intensive restoration program would be initiated to remove graffiti from caves and foster public understanding of the need for cave resource protection.
- Public access to caves and other geological features that are experiencing recreational use-related damage would be controlled, and damaged geological features would be restored as needed and when feasible.

VEGETATION, INCLUDING SPECIAL STATUS SPECIES, AND FIRE MANAGEMENT

Desired Future Conditions:

- Continuity of habitat for special status species and general wildlife will be emphasized.
- Fire is allowed to function as a natural process in the Wilderness and Preserve.
- The high ecological condition of the vegetation of North Laidlaw Park and Bowl Crater is maintained.

Management Actions:

- Approximately 80,000 acres (11 percent of the entire Monument, 29 percent of BLM-administered) have been identified within the Monument in need of proactive restoration and/or post-fire rehabilitation treatment, and these areas would be the focus of restoration actions. Approximately 31,000 acres of annual grassland and 49,000 acres of highly degraded low elevation sagebrush steppe (poor to fair biotic integrity; see Figure 15) would be treated to control cheatgrass and restore big sagebrush cover with a perennial understory.
- Aggressive protection of existing sagebrush steppe communities and proactive restoration of areas with poor to fair biotic integrity through both active and passive means (see Figure 15) would be emphasized.
- Integrated Weed Management (IWM) principles would be applied proactively throughout all zones. A Monument IWM program would emphasize protection of weed free areas, and aggressive detection and control of noxious or highly invasive exotic weeds.
- Restoration projects would be prioritized relative to locations of Key sage-grouse habitats and population strongholds. Emphasis would be on projects that restore annual grasslands and degraded sagebrush steppe communities, as well as enlarging and connecting existing good condition habitats.
- Fire would be managed to maximize protection and restoration of sagebrush steppe in Passage and Primitive Zones.
- Wildland fire use would be allowed in the Wilderness and Preserve except when incompatible with resource management objectives or danger to life or property.
- Limited prescribed fire (<500 acres) would be used in the aspen, conifer, and mountain shrub vegetation types to improve wildlife habitat and invigorate plant communities while protecting the Little Cottonwood Watershed.
- The network of main arterial roads would be managed to support access for wildland fire suppression.
- To protect vegetation resources, no new livestock developments would be permitted in North Laidlaw Park pasture and Bowl Crater allotment unless they result in a net benefit to those resources identified as needing improvement or protection.

WILDLIFE

Desired Future Conditions:

- Same as "Common to All."

Management Actions:

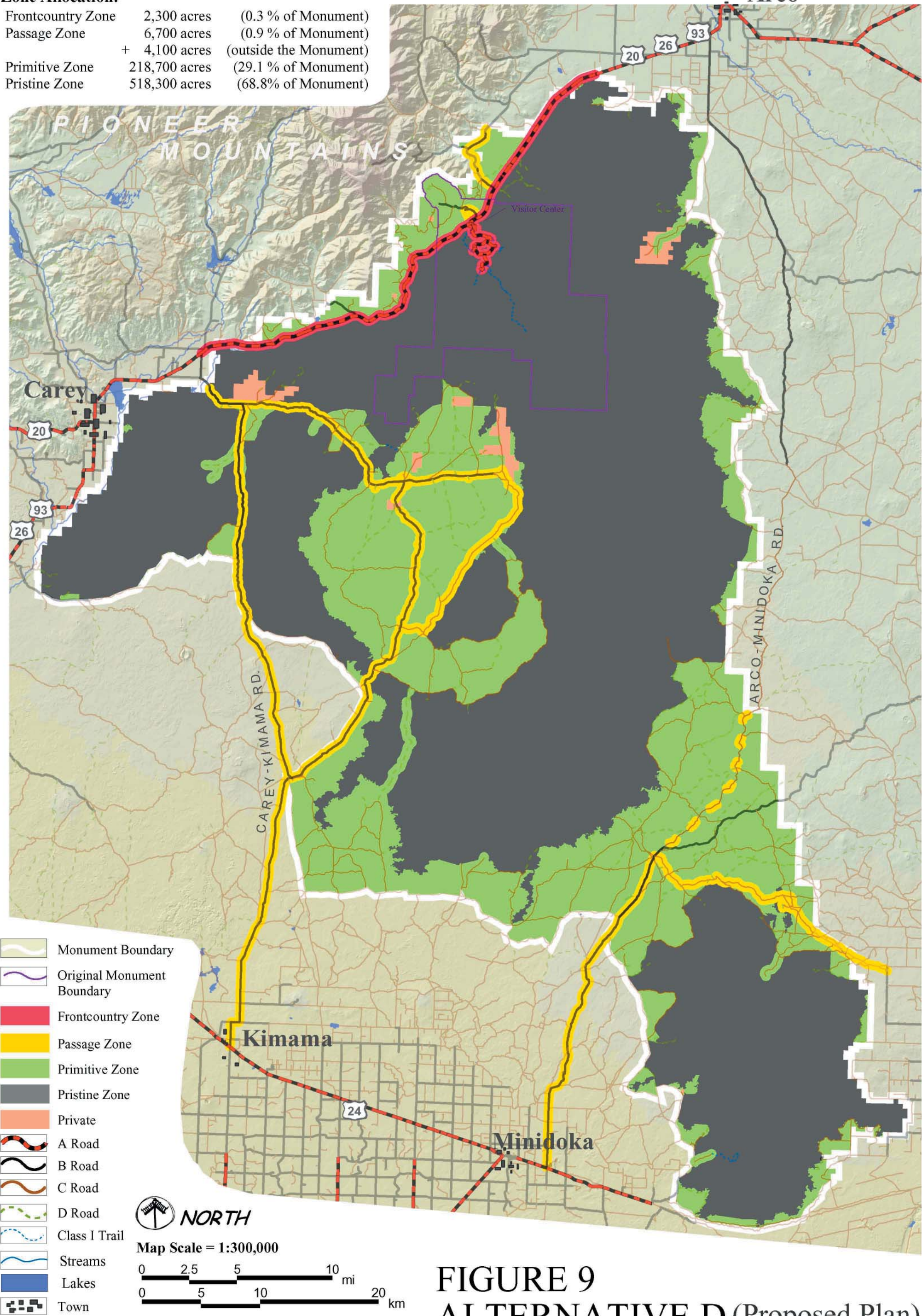
- Consistent with Rangeland Health Standards & Guidelines determinations, livestock grazing management would be modified as necessary to ensure that Key sage-grouse habitat achieves site potential.
- Active and historic leks would be protected from disturbance during the sage-grouse breeding season.

Note: Road closures or restrictions during the breeding season would not apply to agency (BLM and NPS) vehicles, including Idaho Department of Fish and Game vehicles and personnel who conduct necessary sage-grouse inventory and monitoring.



Zone Allocation:

Frontcountry Zone	2,300 acres	(0.3 % of Monument)
Passage Zone	6,700 acres	(0.9 % of Monument)
	+ 4,100 acres	(outside the Monument)
Primitive Zone	218,700 acres	(29.1 % of Monument)
Pristine Zone	518,300 acres	(68.8% of Monument)



Frontcountry, Passage, and Primitive Zone corridors have been oversized for graphic presentation and are not to scale. No warranty is made by the Bureau of Land Management or National Park Service for use of the data for purposes not intended by these agencies.



CULTURAL RESOURCES

Desired Future Conditions:

- Same as "Common to All."

Management Actions:

- A minimum of 10 percent of the Monument would be inventoried (Section 110 NHPA) for cultural resources over the life of the plan.
- The agencies would pursue more public education and interpretation off site, with increased monitoring and protection for those sites at risk.
- The focus of the Section 110 inventory would be in the Primitive and Passage Zones.

TRAVEL AND ACCESS

Desired Future Conditions:

- There is a net decrease in road mileage within the Monument.
- The road system within the planning area supports efficient response time for fire suppression activities.
- Most management direction related to travel and access is covered by management zone allocation (see Table 5).

Management Actions: A Comprehensive Travel Management Plan will be prepared.

- Existing Class B and C roads would remain open, but maintenance would be driven by natural resource management needs, primarily fire suppression, weed management, and restoration activities.
- Selected Class D roads in the Primitive Zone could be converted to trails or closed for resource protection. Class D roads in the Pristine Zone could be converted to Class I trails where resource protection need dictate.
- Allow for a Class B standard on the Arco-Minidoka Road through the Monument should the adjacent county governments choose to upgrade the roads outside the Monument.
- Temporary improvements to existing Class C and D roads could be authorized in the Passage and Primitive Zones to facilitate fire suppression and restoration activities or other management actions aimed at natural resource protection.
- In cooperation with the counties, the agencies would maintain the primary access roads to provide better access for fire management.
- Redundant, unnecessary, or unused roads would be closed as determined by management after completing a Comprehensive Travel Management Plan.

FACILITIES

Desired Future Conditions:

- Off-site facilities for new visitor services are emphasized.

Management Actions:

- Partnerships would be encouraged in developing new visitor information facilities in gateway communities.
- The BLM and NPS would become involved other agencies and the private sector in seeking opportunities for visitor information centers in communities along the interstate corridor.
- There would be no new livestock developments permitted in North Laidlaw Park pasture and Bowl Crater allotment unless they result in a net benefit to those resources identified as needing improvement or protection.

INTERPRETATION / VISITOR UNDERSTANDING

Desired Future Conditions:

- Same as "Common to All."

Management Actions:

- Interpretive signs would be provided along the US 20/26/93 corridor.
- Informational/orientation materials dealing with recreation, maps, safety, and resource concerns would be available in gateway communities. A visitor center(s) operated in cooperation with local partners would be proposed within the I-84 corridor. Emphasis on providing new interpretive and educational materials and programs outside the expanded portion of the Monument and in partnering communities and facilities.
- Educational programs would be expanded to off-site locations.
- A variety of portable media (maps, tapes, guidebooks, etc.), would be developed to interpret the expanded portion of the Monument.
- Commercial outfitters and guides would be encouraged to offer a range of guided experiences. Visitors who might not otherwise have the proper knowledge, vehicles, or preparation to experience the interior of the Monument would then have a viable option that would not require a lot of the road, trail, and facility improvement associated with Alternative B.
- Interpretation outside the Frontcountry Zone would emphasize publications, websites, exhibits, and other off-site interpretive media.
- Safety and resource protection would be emphasized at access points.

RECREATION

Desired Future Conditions:

- The public enjoys opportunities for self-discovery and primitive type recreation experiences.
- Unsigned and self-directed motorized recreation opportunities are available.
- Commercial outfitters and guide services provide opportunities for visitors to experience and learn about the resources of the Monument, reducing the need for development and agency staffing.
- Partnerships with off-site facilities, such as visitor centers and state parks, provide Monument information and interpretation.

Management Actions:

- Implementation-level planning would make determinations as to where specific trails, trailhead facilities, and/or number of primitive campsites would be needed or desired within the Passage Zone. Up to six locations could be developed for camping within the Passage Zone.
- Applications for permitted outfitters and guide services would be encouraged within the Monument for a variety of recreational experiences, such as geology tours, nature walks, bird/wildlife watching, or horseback riding.
- Should permitted outfitter, guide, or similar NPS concession use numbers reach 2,000 annual user days in the expanded portion of the Monument, BLM and/or NPS would prepare an implementation level plan for the management of these services. This plan would include use allocations and limits.
- The BLM and NPS would actively seek potential partnerships with off-site communities and state agencies to provide Monument information and interpretation.

VISUAL RESOURCES

Desired Future Conditions:

- Same as "Common to All."

Management Actions:

- VRM inventory classes would be designated as management classes as shown on Figure 7.

Table 5 summarizes where the various types of roads that currently exist would fall within the management zones as they would be located under Alternative D (Proposed Plan). Road and trail classification is based on the inventoried condition

and maintenance standards for roads and trails as of 2003. This alternative allows for Passage Zone roads to serve as access for resource management and protection and also allows for more Pristine Zone protection.



Table 5
Alternative D (Proposed Plan) –
Road and Trail Inventory by Management Zone

Road Classification	MANAGEMENT ZONES*				Total Miles ¹ (Inside / Outside)
	Frontcountry	Passage ¹ (Inside / Outside)	Primitive	Pristine	
Class A	30	0 / 0	0	0	30
Class B	0	46 / 52	11	0	57 / 52
Class C	2	34 / 11	321	2	359 / 11
Class D	0	2 / 0	141	26	169 / 0
Class I Trails	7	0 / 0	1	6	14 / 0
Total Miles	39	82 / 63	474	34**	629 / 63

*Approximate miles of existing roads and trails within each zone rounded to the nearest whole number.

**To be closed.

¹Under Alternative D, portions of the Carey-Kimama and Arco-Minidoka roads that lie outside the Monument boundaries and provide key Monument access are included in the Passage Zone. This would require coordination with the surrounding county governments.

ALTERNATIVES AND ACTIONS CONSIDERED BUT NOT ANALYZED IN DETAIL

The Council on Environmental Quality (CEQ) guidelines for implementing NEPA requires federal agencies to analyze all “reasonable” alternatives that substantially meet the purpose and need for the proposed action. The purpose of the Proposed Monument Management Plan/Final Environmental Impact Statement (Proposed Plan/FEIS) is to provide for management of the Craters of the Moon National Monument and Preserve within the provisions of the Proclamation, and to meet the requirements of the Federal Land Policy and Management Act (FLPMA) and other laws and regulations. Because the Proclamation states that certain uses will not continue, and that other uses will continue consistent with federal laws and regulations, actions that do not comply with the Proclamation would not meet the purpose and need for the plan and therefore were not included in alternatives that were analyzed in this EIS.

The following specific alternatives, or actions that could be components of alternatives, were suggested but not analyzed:

NO LIVESTOCK GRAZING

During the summer of 2000, of the Secretary of the Interior published Consensus Management Points (May 19, 2000) stating:

“Sheep and cattle grazing will continue in the shrub steppe of the Great Rift area to be managed by the Bureau of Land Management (BLM), including Laidlaw Park, consistent with the laws, regulations, and policies followed by the BLM in issuing and administering grazing permits or leases on all lands under its jurisdiction.”

Proclamation 7373 states: “Laws, regulations, and policies followed by the Bureau of Land Management in issuing and administering grazing permits or leases on all lands under the jurisdiction shall continue to apply with regard to the lands in the Monument administered by the Bureau of Land Management.” Based on this language, a “no livestock grazing” alternative would not meet the purpose and need and would not be consistent with the Proclamation. The BLM’s authority to manage grazing under existing laws, regulations, and policies would continue under all the alternatives considered. Lands available for grazing would be

limited to those under BLM authority and where BLM's process allows grazing to continue. With the exception of the lava lands now within the Preserve, all of the lands have been found to be suitable for livestock grazing, with certain management restrictions in some areas to meet standards.

NO HUNTING WITHIN THE MONUMENT

Comments supporting a ban on hunting within the Monument or limiting hunting to game species were expressed. Proclamation 7373 states: "Nothing in this proclamation shall be deemed to enlarge or diminish the jurisdiction of the State of Idaho with respect to fish and wildlife management," as well as "...the National Park Service shall have primary management authority over the portion of the Monument that includes the exposed lava flows, and shall manage the area under the same laws and regulations that apply to the current monument." Hunting is prohibited under the NPS Organic Act and that act applied to the "current monument." Therefore, hunting was prohibited within the NPS-administered portions of the expanded Monument until Public Law (PL) 107-213 (August 2002) designated the NPS-administered lands within the new areas of the Monument as a Preserve and directed the Secretary of the Interior to allow hunting within the Preserve. PL 107-213 provides that the Secretary of the Interior, after consultation with the State of Idaho, "may designate zones where, and establish periods when, no hunting may be permitted for reasons of public safety, protection of the area's resources, administration, or public use and enjoyment".

An alternative proposing zones within the Preserve closed to hunting was not analyzed in detail. However, it is expected in implementing this plan that the NPS will consult with the State of Idaho and the tribes on options for closing the developed areas of Preserve lands to hunting for reasons of public safety. In addition to consulting with the State of Idaho, that process will require publication as a rulemaking in the Federal Register for public review and comment. While no specific circumstances were identified in the public scoping process, the area

and timing of hunting activities could be modified in a like manner for the other purposes identified in PL 107-213 should such a need be identified in the future.

OTHER ALTERNATIVES

No comprehensive alternatives were submitted by outside interests, including tribes, state and local governments, or other groups.

The planning team has considered recommendations for adjustments to the boundary of the Monument. In looking at possible boundary adjustments, previous studies including the Reconnaissance Survey – Expansion of Craters of the Moon National Monument (1989) and Management Alternatives – Expansion of Craters of the Moon National Monument (1990) were examined. It was determined that a recommendation for substantial changes to the boundary of the Monument was not needed as part of any of the alternatives. However, a few minor changes to address operational concerns were identified. As a result, minor boundary adjustments are being recommended for future action and those, along with the reasons, are described in Appendix C.

SUMMARY OF ALTERNATIVES

Table 7, at the end of this chapter, contains a summary of the major features and management actions that would be associated with each of the four alternatives. The table shows actions that are common to all the alternatives, as well as the alternative-specific actions for each. Also provided is Table 8, which summarizes acreages and mileages within each management zone, by road classification, for all four alternatives.

SUMMARY OF ENVIRONMENTAL CONSEQUENCES

Table 9, at the end of this chapter, contains a comparative summary of the key environmental consequences for each of the four alternatives. A



detailed description of these impacts can be found in the Environmental Consequences chapter.

SELECTION OF THE PREFERRED ALTERNATIVE / PROPOSED PLAN

To select the Preferred Alternative, all of the alternatives were evaluated with regard to the planning objectives and other criteria deemed important to the planning team. To minimize the influence of individual biases and opinions, a team used an objective analysis process called “Choosing by Advantages” (CBA). This process, which has been used extensively by government agencies and the private sector, evaluates the different alternatives by identifying and comparing the relative advantages of each according to a set of criteria.

One of the greatest strengths of the CBA process is the fundamental philosophy that decisions must be anchored in relevant facts and in the purpose and significance of the resources and lands involved. The CBA process asks which alternative gives the greatest advantages. To answer this question, relevant facts were used to determine the advantages the alternatives provide. To ensure a logical and traceable process, evaluation criteria were based on impact topics where there were differences in the alternatives.

The following categories were further broken down to better assess the alternatives. Alternatives were evaluated to see how well they:

- Protect Natural and Cultural Resources
 - Prevent loss of, or damage to, geologic resources
 - Restore degraded sagebrush steppe vegetation
 - Prevent introduction and spread of noxious weeds
 - Prevent loss of, and damage to, cultural resources
- Provide a Quality Visitor Experience
 - Availability of visitor facilities, interpretive

- programs and other visitor services
- Variety of driving experiences
- Opportunities for solitude and self-discovery
- Availability of travel assistance (signage and maps)
- Variety of non-motorized trails (hiking, pack stock, and bicycling)
- Protect Public Health, Safety, and Welfare
- Maintain and Enhance Relationships with Local Governments and Local Communities
 - Impacts on local government – emergency service providers (e.g., sheriff)
 - Fiscal impact on county facilities (e.g., roads)
 - Impacts on “grazing” permittees

In addition, the CBA Team considered but dismissed the following topics, since there were no substantial differences among the alternatives and the management actions were essentially the same for all:

- Air Quality
- Grazing
- Predator Control
- Wilderness
- Opportunities for Research and Science

The next step was to assess and rank the alternatives based on the advantages they provided. The advantages were assessed by evaluating how well each alternative would meet (or not meet) the criteria listed above. Protecting natural and cultural resources was determined to be the most important evaluation criterion by the CBA Team.

Each alternative was assigned an “importance” value that reflected its rank; a higher importance value indicated that the alternative would meet more of the evaluation criteria and/or more of the ones deemed most important to the CBA Team. Alternative D ranked the highest in advantages for the resources of the Monument. Major advantages of Alternative D identified during the CBA process included accelerated sagebrush steppe restoration and increased

efforts to partner for interpretation and orientation information outside the Monument boundary.

Costs for each alternative versus the advantages provided were also compared and analyzed. These costs were developed for comparative purposes only. Because the Plan/EIS costs are estimated well in advance of a project, the numbers will need to be re-examined and refined as BLM and NPS move forward with implementation planning. Costs identified in the Plan/EIS are not intended to be used as a basis for funding until further analysis has been completed.

Comparative costs for the alternatives, as shown in Table 6, include initial development costs and annual operational costs. Initial development costs include labor and materials for construction of new facilities, annualized over the life of the plan. For the purposes of cost estimating, general assumptions are made regarding amounts and sizes of development

and operations. Annual operational costs consider the annual costs of each alternative over the life of the plan. For example, annual costs would include staffing required, costs of operating a building, ongoing rehabilitation and restoration projects, and replacement and maintenance costs of elements such as roadways in an alternative. Not included here under initial development costs is the possible federal shared cost for new facilities outside the Monument, such as a jointly operated visitor center within the I-84 corridor suggested under Alternative D (Proposed Plan).

Selection of the Preferred Alternative considers the advantages provided by each alternative (reflected in the importance scores), as compared to the costs of the alternative. Figure 10 summarizes the results of the CBA analysis.

Based on the CBA importance rankings and cost analyses, the CBA Team recommended Alternative

Figure 10
Management Plan Cost of Alternatives
Compared to Importance (Advantages)

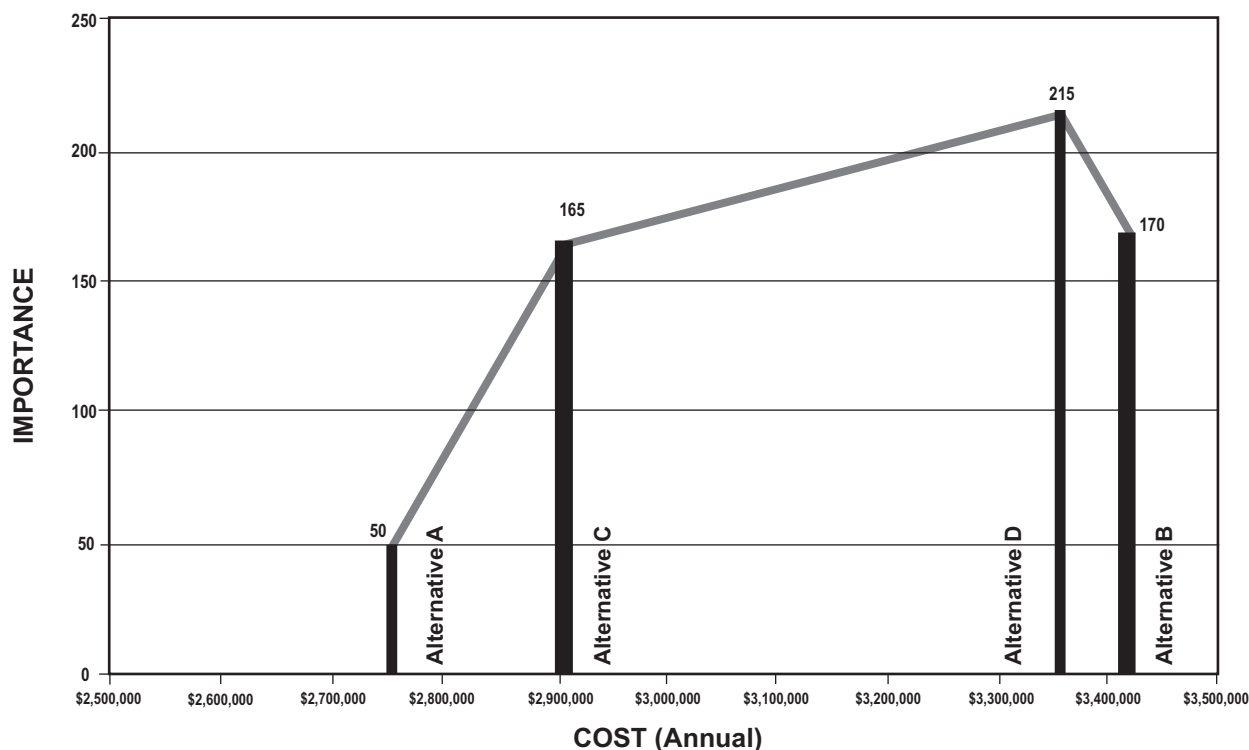


Table 6
Summary of Comparative Costs (FY 2003 dollars)

Alternative	Alternative A (No Action Alternative)	Alternative B	Alternative C	Alternative D (Proposed Plan)
Annual Operating	\$2,754,000	\$3,389,000	\$2,906,000	\$3,352,000
Initial Development	\$0	\$30,000	\$6,000	\$9,000
Total	\$2,754,000	\$3,419,000	\$2,912,000	\$3,362,000

D as the Preferred Alternative, and thus the Proposed Plan. Alternative D scored the highest in advantages (215 importance value) and was not the highest cost alternative. Alternative B had the highest cost and a lower importance value compared to Alternative D. Although Alternative C had a lower cost than Alternative D (\$450,000 less), it also had a substantially lower importance value. Alternative A (No Action Alternative) had a low cost, but a considerably lower importance value. Overall, Alternative D represented the best choice in that it provided high importance (many advantages) at a relatively reasonable cost.

Based on this analysis and recommendation of the CBA Team, the Idaho BLM State Director and the NPS Pacific West Regional Director selected Alternative D as the Preferred Alternative in the Draft Plan/EIS, and thus the Proposed Plan.

ENVIRONMENTALLY PREFERRED ALTERNATIVE

The Environmentally Preferred Alternative is defined as “the alternative that will promote the national environmental policy as expressed in §101 of the National Environmental Policy Act.” Section

101 states, “...it is the continuing responsibility of the federal government to...

- Fulfill the responsibilities of each generation as trustee of the environment for succeeding generations.
- Ensure for all Americans safe, healthful, productive, and esthetically and culturally pleasing surroundings.

- Attain the widest range of beneficial uses of the environment without degradation, risk of health or safety, or other undesirable and unintended consequences.
- Preserve important historic, cultural, and natural aspects of our national heritage and maintain, wherever possible, an environment that supports diversity and variety of individual choice.
- Achieve a balance between population and resource use that will permit high standards of living and a wide sharing of life’s amenities.
- Enhance the quality of renewable resources and approach the maximum attainable recycling of depletable resources.”

In comparison with the other alternatives analyzed, Alternative D, also selected as the Preferred Alternative, best meets the national environmental goals identified above. Alternative D provides a high level of protection of natural and cultural resources, while providing for a wide range of beneficial uses of the environment.

Alternative D (Preferred Alternative/Proposed Plan) would enhance the ability of BLM and the NPS to achieve the purposes of the enabling laws and proclamations, as well as those goals outlined in Chapter 1 of this document. Alternatives A, B, and C lack the degree of management emphasis required to protect benchmark native vegetative communities and restore degraded sagebrush steppe habitat found in Alternative D. Substantial portions of the new Monument lands are currently in a degraded condition that can only be improved with the scope of

active restoration efforts provided for in Alternative D.

Alternative D (Preferred Alternative/Proposed Plan) would maintain most existing public facilities and access routes, but does not expand or substantially upgrade these. Alternative D allows for largely self-directed dispersed recreational use throughout most of the lands recently added to the Monument, while recognizing that site-specific use restrictions may be required in some areas to protect natural and cultural resources.

Goals related to public understanding and appreciation of the Monument resources would be achieved through existing on-site programs and facilities, as well as expanded programs and facilities located off site and through authorized licensed guide operations. Livestock grazing, a traditional land use on BLM lands prior to Monument expansion, would continue in all the alternatives considered with only minor changes among alternatives.

MITIGATION MEASURES

The identification of mitigating measures is required by NPS in general management planning documents, as well as by the Council on Environmental Quality in its requirements for implementing the National Environmental Policy Act. These measures would be used to avoid or minimize potential impacts on natural and cultural resources on NPS lands from construction activities, use by visitors, and Monument operations. Similar actions would be taken on BLM lands to protect resources following the “Management Actions” previously described and the Planning Criteria (Appendix B).

Natural Resources

Geological Resources and Caves

Significant cave resources in the Monument would be identified and protected. Prior to any ground disturbing activity, areas would be surveyed for unique, rare, or special geologic resources, including fossils. BLM would identify significant caves on federal land and restrict or regulate use according to the FCRPA of 1988. All caves on NPS-managed land

are considered “significant” and in accordance with NPS policies and procedures would be protected to the greatest extent possible with current funding and staffing levels. Threats to unique or representative geologic resources would be identified and mitigated according to NPS and BLM management policies.

Soils and Water

Whenever possible, new development would be carried out on previously disturbed sites or in carefully selected sites with as small a footprint as possible. During design and construction, Monument staff would identify areas to be avoided.

Soil erosion and associated water quality impacts would be minimized by limiting the time that soil would be left exposed and by using various erosion control measures such as the placement of silt fencing, retention and replacement of topsoil, revegetation of sites with native species, and selective scheduling of construction activities. Conserving topsoil would minimize potential compaction and erosion of bare soil. The use of conserved topsoil would help preserve the microorganisms and seeds of native plants. Topsoil should be re-spread as close to the original location as possible and supplemented with scarification, mulching, seeding, and/or planting with species native to the immediate area. This would reduce construction scars and erosion. In an effort to control the spread of exotic plant species, only certified weed-free hay, straw, or mulch would be used.

All new construction would be completed using sustainable practices, such as the use of environmentally friendly materials and efficient utility systems. Components of such projects would be assessed for visual quality. Utilities and support functions such as water, sewer, electricity, and roads would be evaluated and designed to mitigate visual impact.

Vegetation, including Special Status Species, and Fire Management

Monument staff would survey proposed development sites for sensitive species and would relocate new development if those populations were present. Similarly, trails, roads, and campsites would be



located to avoid impact on sensitive species.

Damage to natural and cultural resources by fire suppression, prescribed fire, or restoration treatment operations will be avoided by following the operational protocols in Appendix J. Areas burned by wildland fire will be examined and the need for treatment under Emergency Stabilization and Rehabilitation (ESR) will be determined. The Normal Fire Rehabilitation Plan will be used to guide ESR treatments on BLM-administered lands for the Shoshone and Burley Field offices (USDI BLM 2005). Revegetation efforts would emulate the natural form, spacing, abundance, and diversity of native plant communities and would use native species whenever feasible.

To help minimize the spread of non-native plants, Monument managers would allow only the use of weed-free materials and equipment for operations. A variety of measures to prevent weed introduction and spread within the Monument would be implemented. These measures would include: cleaning vehicles and equipment that may have been used in weed-infested areas prior to entry into the Monument; identifying treating and posting weed locations; and educating staff, livestock permittees, visitors, and contractors.

Trails in the NPS-managed portion of the Monument would be monitored for signs of disturbance of native vegetation. To control potential impacts on plants from trail erosion or social trails, sustainable, low-impact barriers would be used, and disturbed areas would be revegetated with native plants. Also, interpretive signs would educate the public on the effects of soil erosion.

Inventory and monitoring of all natural resources would be undertaken to provide a comprehensive understanding of the Monument's wildlife, vegetation, and habitat.

Wildlife and Special Status Species

A variety of techniques would be employed to reduce the impacts on wildlife, such as visitor education programs and restrictions on visitor activities. NPS, in conjunction with the State of

Idaho, would designate areas within the Preserve and periods of time when no hunting would be permitted for reasons of public safety, protection of the areas' resources, administration, or public use and enjoyment.

All special status species in the Monument and Preserve would be inventoried with monitoring plans established. Actions and stipulations necessary to protect special status species and their habitats would be made part of land use authorizations (e.g., limiting fragmentation of special status species populations when considering development of road network) and fire planning.

Air Quality

Dust control during construction activities would be required, and all construction machinery would be required to meet air emission standards.

Cultural Resources

In accordance with agency policies and procedures, the Monument and Preserve would continue to protect cultural resources to the greatest extent possible with available funding and staff levels. Disturbing significant resources would be avoided whenever possible. Where avoidance or preservation cannot be achieved, mitigation would be carried out under the guidance of the procedures of the Advisory Council on Historic Preservation (36 Code of Federal Regulations [CFR] 800).

Before any land-modifying activity, a professional archaeologist would inspect the present ground surface of the proposed development site and the immediate vicinity for the presence of cultural remains, both prehistoric and historic. Should newly discovered or previously unrecorded cultural remains be located, additional investigations would be accomplished prior to earth-disturbing activities.

Through consultation with the tribes and the Idaho SHPO, areas for Section 110 cultural resource inventories would be prioritized. At-risk sites eligible for the NRHP would be monitored for vandalism. A Cultural Resources Management Plan, which describes how specific sites would be managed, defines what areas need additional inventory, and

designates potential-use categories for sites, would be completed for the Monument. Should NAGPRA materials be inadvertently discovered within the Monument, the agencies would follow the tribal consultation procedures outlined in the NAGPRA of 1990. All preservation, rehabilitation and restoration efforts for historic structures would be carried out in accordance with the Secretary of the Interior's Standards for the Treatment of Historic Properties, with Guidelines for Preserving, Rehabilitation, Restoring, and Reconstructing Historic Buildings.



Table 7
Summary of Alternatives

(*)COMMON TO ALL ALTERNATIVES	ALTERNATIVE A (NO ACTION ALTERNATIVE)	ALTERNATIVE B	ALTERNATIVE C	ALTERNATIVE D (PROPOSED PLAN)
GENERAL CONCEPTS	No major changes in resource management, visitor programs, or facilities.	Provide the opportunity for a broad array of visitor experiences; represents the highest accommodation of visitor access to, and within, the Monument.	Retain and enhance the Monument's primitive character with minimal visitor facilities or services and less intensive management action to influence resource conditions.	Aggressively restore the sagebrush steppe communities, including noxious weed control and fire management, and promote partnerships at off-site facilities to provide Monument information and interpretation.
ALLOCATION OF ZONES				
Frontcountry Zone Acreage (% of Monument)	2,300 acres (0.3%)	2,300 acres (0.3%)	2,300 acres (0.3%)	2,300 acres (0.3%)
Passage Zone Acreage (% of Monument)	4,700 acres (0.6%)	68,900 acres (9.2%) <i>9,000 acres Outside Monument</i>	3,200 acres (0.4%)	6,700 acres (0.9%) <i>4,100 acres Outside Monument</i>
Primitive Zone Acreage (% of Monument)	290,200 acres (38.6%)	226,900 acres (30.1%)	201,000 acres (26.7%)	218,700 acres (29.1%)
Pristine Zone Acreage (% of Monument)	448,800 acres (59.6%)	447,900 acres (59.5%)	539,500 acres (71.7%)	518,300 acres (68.8%)
NATURAL RESOURCES				
General				
(*) Provide for and implement resource inventories, surveys, and monitoring programs; disseminate information to the public; mitigate threats to resources utilizing proactive management activities.	(*)	(*)	(*)	(*)

NOTE: An (*) appearing in a column means the description under the Common to All Alternatives for the topic also applies to this alternative.

(*)COMMON TO ALL ALTERNATIVES	ALTERNATIVE A (NO ACTION ALTERNATIVE)	ALTERNATIVE B	ALTERNATIVE C	ALTERNATIVE D (PROPOSED PLAN)
Geological Resources				
(*) Protect geological features from damage presently occurring; designate and implement resource inventories and monitoring strategies appropriate for resource protection; complete surveys prior to any surface disturbance; identify and mitigate threats to resources.	(*)	(*) Initiate a restoration program to remove cave graffiti and foster public understanding of the need to protect cave resources; consider implementing trails to mitigate impacts from user-created trails.	(*) Initiate a limited restoration program to remove cave graffiti and foster public understanding of the need to protect cave resources; no further site development to facilitate cave access; emphasize current natural conditions.	(*) Initiate intensive restoration program to remove cave graffiti and foster public understanding of the need to protect cave resources; control public access to caves and other geological features that are experiencing recreational use-related damage; restore geological features as needed and when feasible.
Soils				
(*) Protect soils from accelerated and unnatural erosion; investigate biological soil crusts to provide specific management guidance.	(*)	(*)	(*)	(*)
Vegetation, Including Special Status Species and Fire Management				
(*) Suppress wildland fire to protect life and property, recent rehabilitation, and restoration projects; develop a joint fire management plan; continue cooperative fire management arrangements. Restore annual grasslands and highly degraded sagebrush steppe communities to achieve a mosaic of shrubs, forbs, and grasses capable of sustaining native animal populations. Restoration treatments may be active or passive and may include but are not limited to the following: prescribed fire, thinning, mowing, herbicide treatment, seeding, temporary removal of livestock and/or changes in grazing regimes or facilities, and road closures.	(*) Manage all wildland fires within the Preserve and BLM portion of the Monument according to current BLM land use plans. Manage wildland fire within the original Monument according to NPS Wildland Fire Management Plan.	(*) Implement proactive fuels management activities to offset the potential effects of increased public use. Allow wildland fire use in the Wilderness and Preserve when compatible. Limited prescribed fire would be used in the aspen, conifer, and mountain shrub vegetation types to improve wildlife habitat and invigorate plant communities while protecting the Little Cottonwood Watershed.	(*) Allow wildland fire use in the Wilderness and Preserve when compatible. Limited prescribed fire would be used in the aspen, conifer, and mountain shrub vegetation types to improve wildlife habitat and invigorate plant communities while protecting the Little Cottonwood Watershed.	(*) Manage fire to maximize protection and restoration of sagebrush steppe. Allow wildland fire use in the Wilderness and Preserve when compatible. Limited prescribed fire would be used in the aspen, conifer, and mountain shrub vegetation types to improve wildlife habitat and invigorate plant communities while protecting the Little Cottonwood Watershed. Manage the road network to emphasize access for wildfire suppression and minimal response time.

(*)COMMON TO ALL ALTERNATIVES	ALTERNATIVE A (NO ACTION ALTERNATIVE)	ALTERNATIVE B	ALTERNATIVE C	ALTERNATIVE D (PROPOSED PLAN)
Vegetation, Including Special Status Species and Fire Management (continued)				
(*) Protect and restore sagebrush steppe communities; restore annual grasslands and highly degraded sagebrush steppe communities; emphasize use of native plants.	(*) Target 40,000 acres for restoration (5% of Monument; 15% of BLM land); assumes current rate of restoration – 2,500 to 4,000 acres/year.	(*) Target 45,000 acres for restoration (6% of Monument; 16% of BLM land).	(*) Target 55,000 acres for restoration (7% of Monument; 20% of BLM land).	(*) Target 80,000 acres for restoration (11% of Monument; 29% of BLM land).
(*) Rehabilitate wildland fire burned areas when necessary to restore sagebrush steppe species and suppress noxious weeds; permit only certified weed-free hay, straw, and mulch within the Monument; utilize Integrated Weed Management to control and prevent noxious weeds.	(*) Treat areas to control cheatgrass and restore sagebrush cover.	(*) Utilize Integrated Weed Management with emphasis on treatment/containment, prevention, and education, particularly in Frontcountry and Passage Zones.	(*) Employ less intrusive treatment methods for restoration and rehabilitation. Utilize non-chemical weed control methods, while not ruling out herbicide use.	(*) Proactively treat and restore areas as quickly as possible.
(*) Adopt interagency habitat guidelines for sage-grouse and sagebrush steppe obligates to guide sagebrush steppe management; inventory all special status species in the Monument; authorize actions and stipulations to protect special status species and their habitats.	(*) Restore existing and potential sagebrush steppe communities within the Monument, emphasizing Key sage-grouse habitat in Laidlaw Park, Little Park, and Paddelford Flat.	(*) Create an opportunity for interpreting the decline of sagebrush steppe and efforts to restore this dwindling resource.	(*) Treat larger, more continuous acreages for restoration.	(*) Restore annual grasslands and degraded sagebrush steppe communities, while enlarging and connecting existing good condition habitats. Prioritize restoration projects relative to Key sage-grouse habitats and population strongholds. Protect vegetation resources by not permitting any new livestock developments in North Laidlaw Park pasture and Bowl Crater allotment.
Water Resources, Including Wetlands				
(*) Maintain, restore, and enhance riparian areas and wetlands; no additional playas are modified or developed; work with appropriate authorities to obtain water resources needed for Monument purposes.	(*)	(*)	(*)	(*)



(*)COMMON TO ALL ALTERNATIVES	ALTERNATIVE A (NO ACTION ALTERNATIVE)	ALTERNATIVE B	ALTERNATIVE C	ALTERNATIVE D (PROPOSED PLAN)
Wildlife, Including Special Status Species and Their Habitat				
(*) Inventory and monitor target species; designate no hunting areas as needed for safety and protection of area resources; protect special status species in the Monument; work with various agencies to control predators and pests.	(*)	(*)	(*)	(*)
Air Quality				
(*) Work proactively with surrounding communities, land management agencies, and the Idaho Department of Environmental Quality to limit increases in particulate matter and sulfur dioxide throughout the Monument.	(*)	(*)	(*)	(*)
CULTURAL RESOURCES				
Archaeological and Historic Resources				
(*) Inventory, evaluate, and document cultural resources of known archaeological and historic resources; prioritize Section 110 inventories in consultation with the Idaho SHPO; complete a baseline research report of archaeological resources within the Monument; prepare a Cultural Resource Management Plan that defines what areas need additional inventory.	(*) Intensively inventory a minimum of 5 percent of the Monument for cultural resources.	(*) Intensively inventory a minimum of 10 percent of the Monument for cultural resources; increase Section 110 inventory in Passage Zone.	(*) Intensively inventory a minimum of 10 percent of the Monument for cultural resources; focus Section 110 inventory in the Primitive and Pristine Zones.	(*) Intensively inventory a minimum of 10 percent of the Monument for cultural resources; focus Section 110 inventory in the Primitive and Passage Zones.
(*) Proactively manage and protect cultural resources; monitor and stabilize at-risk NRHP-eligible sites found to be deteriorating and protect/stabilize as needed.	(*) Continue some interpretation of archaeological and historic sites.	(*) Emphasize public education and interpretation of cultural resources in response to increased access. Monitor sites and implement protection measures at various recreation sites.	(*)	(*) Pursue more public education and interpretation off site; increase monitoring and protection of at-risk sites.

(*)COMMON TO ALL ALTERNATIVES	ALTERNATIVE A (NO ACTION ALTERNATIVE)	ALTERNATIVE B	ALTERNATIVE C	ALTERNATIVE D (PROPOSED PLAN)
Museum Collections (*) Allow access to Monument collections for legitimate research and educational purposes; manage all resource management records directly associated with museum objects as museum property.	(*)	(*)	(*)	(*)
NATIVE AMERICAN RIGHTS AND INTERESTS				
(*) Consult with interested tribes on a regular basis regarding the management of traditional cultural properties. Identify with the tribes protection measures for places of traditional cultural importance to Native Americans to preserve the integrity and use of these areas as described in National Register Bulletin 38. Take measures to identify traditional cultural places of importance to preserve the integrity and use of these areas. Allow continued traditional tribal hunting, gathering, and use of natural resources on the Preserve and BLM portions of the Monument.	(*)	(*)	(*)	(*)
LAND USE AND TRANSPORTATION				
Travel and Access (*) Prepare a Comprehensive Travel Management Plan; prepare a travel map showing allowable uses, road and trail classifications, closures, and standards and restrictions; prepare guidelines and procedures for emergency and administrative off-road travel.	(*)	(*)	(*)	(*)



(*)COMMON TO ALL ALTERNATIVES	ALTERNATIVE A (NO ACTION ALTERNATIVE)	ALTERNATIVE B	ALTERNATIVE C	ALTERNATIVE D (PROPOSED PLAN)
Travel and Access (cont.)				
(*) On an interim basis and until a detailed Comprehensive Travel Management Plan is completed, roads are limited to those designated as Class A-D roads (displayed on Figure 16, "Transportation Network"), excluding any segments falling within the Pristine Zone boundaries. All other lands are off-road and closed to motorized or mechanized vehicle recreation use.	(*)	(*)	(*)	(*)
Class A roads found in the Frontcountry Zone.				
Class B roads found in the Frontcountry and Passage Zones.				
Class C&D roads found in the Passage and Primitive Zones.				
(*) Designate all roads and trails on BLM-administered lands as "Limited" off-highway vehicle (OHV) use (i.e., allow OHV on these roads in a restricted manner; no OHV off roads); designate all land within the Monument other than designated roads and trails as "Closed" for OHV use; close and rehabilitate all routes established in WSAs not identified as "existing ways"; authorized NPS "Park roads" are open only to licensed vehicles.	(*)	(*)	(*)	(*)
Close redundant, unneeded, or unused routes as determined by management.	Legal roads in existence prior to Proclamation 7373 remain open, but roads can be closed on a case-by-case basis to protect resources.	Designate the Carey-Kimama and Arco-Minidoka roads as "Backcountry Byways" over their entire length outside the Monument. Designate multiuse and single-use trail routes. Upgrade and maintain the Carey-Kimama and Arco-Minidoka roads to a consistent Class B standard.	Close or convert many Class D roads in the Primitive Zone to non-motorized trails.	Existing Class B and C roads remain open, but maintenance driven by resource, fire/weed control needs, and restoration activities. Select Class D roads in Primitive and Pristine Zones could be converted to trails or closed for resource protection. Possibly allow for a Class B standard on the Arco-Minidoka Road through the Monument. Close all roads and ways within the Pristine Zone to all motorized and mechanical vehicle use except for emergencies and administrative use.

(*)COMMON TO ALL ALTERNATIVES	ALTERNATIVE A (NO ACTION ALTERNATIVE)	ALTERNATIVE B	ALTERNATIVE C	ALTERNATIVE D (PROPOSED PLAN)
Travel and Access (cont.)				
(*) No new motorized vehicle roads or trails will be developed in the Pristine Zone; individual roads and trails may be temporarily or permanently closed to protect resources.	(*) New trails could be developed in certain areas; maintain or rehabilitate trails in the Kings Bowl area to prevent further resource damage.	(*) Improve a trail system at the Kings Bowl area and to additional nearby points of interest.	(*) Close all roads and ways within the Pristine Zone to all motorized and mechanized vehicle use except for emergency and administrative use.	(*) Authorize temporary improvements to Class C and D roads in the Passage and Primitive Zones to facilitate management actions aimed at natural resource protection. Close unneeded, unused, or redundant routes as determined by management. Cooperate with the counties to provide better access for fire management.
Frontcountry road and trail mileage	39 miles	39 miles	39 miles	39 miles
Passage Zone road and trail mileage	61 miles	262 miles (138 miles Outside Monument)	40 miles	82 miles (63 miles Outside Monument)
Primitive Zone road and trail mileage	522 miles	314 miles	490 miles	474 miles
Pristine Zone road and trail mileage	9 miles	6 miles	62 miles	34 miles
** See Table 8 (at the end of this table) for summary of acreage/mileage in each management zone by road classification, for all four alternatives				
Livestock Grazing				
(*) Alter nine allotment boundaries to accurately reflect NPS/BLM boundary (no change in AUMs): 273,000 BLM acres available for livestock use, 1,800 BLM acres not available for livestock use, and 462,880 NPS acres not available for livestock use; 36,965 AUMs permitted. Continue using existing livestock developments in Primitive and Pristine Zones; evaluate Brigham Point and Paddelford Flat sheep trails across NPS land for future use.	(*)	(*)	(*)	(*) No new livestock developments would be permitted in North Laidlaw Park pasture and Bowl Crater allotment unless they result in a net benefit to those resources identified as needing improvement or protection.



(*)COMMON TO ALL ALTERNATIVES	ALTERNATIVE A (NO ACTION ALTERNATIVE)	ALTERNATIVE B	ALTERNATIVE C	ALTERNATIVE D (PROPOSED PLAN)
OTHER LAND USES				
Facilities				
(*) Enlarge and reconstruct existing Visitor Center/Administration Building, as approved; evaluate sharing BLM/NPS facilities and staff; install previously approved signs and wayside exhibits at Kings Bowl.	(*)	(*) Expand and develop new facilities at the Visitor Center to accommodate increased visitation.	(*)	(*) Become involved with other agencies and the private sector in seeking opportunities for visitor information centers in communities along the interstate corridor.
(*) Include Monument information at BLM fire stations in Carey and Kimama.	(*) Maintain existing informational and directional kiosks located along and within the Monument.	(*) Potential to increase visitor services for the Monument at Carey and Kimama Fire Stations.	(*)	(*) Encourage partnership developing new visitor information facilities in gateway communities.
(*) Modify existing paved road system and parking areas to address safety and maintenance concerns at NPS Visitor Center at the original Monument.	(*) Provide visitor safety and information signs in the Kings Bowl area.	(*) Centralized office space for BLM and NPS staff would be considered.	(*) Limit any new facilities to what may be necessary for public safety and/or resource protection. No new livestock developments are permitted in the nominated North Laidlaw Park ACEC. Centralized office space for BLM and NPS staff would be considered.	(*) Centralized office space for BLM and NPS staff would be considered.
Lands and Realty				
(*) Pursue with willing landowners acquisition or exchange of private inholdings within the Monument; pursue an exchange for state lands located in and near the Monument; use existing policies to guide action on applications for new discretionary land use authorizations. Inventory all rights of way, easements, land use permits, and other authorizations in effect as of the date of the Proclamation.	(*)	(*)	(*)	(*)

(*)COMMON TO ALL ALTERNATIVES	ALTERNATIVE A (NO ACTION ALTERNATIVE)	ALTERNATIVE B	ALTERNATIVE C	ALTERNATIVE D (PROPOSED PLAN)
Mineral Materials (*) Continue existing authorization for mineral sites within the Monument for the term of the authorization; no new material sites will be developed except for administrative purposes; provide information on BLM areas outside the Monument where casual collection is appropriate and permitted. Consult with Idaho Transportation Department (ITD) on relinquishment of three right-of-way grants for material sites along US 93.	(*)	(*)	(*)	(*)
Wilderness and Wilderness Study Areas (*) Develop a joint BLM/NPS Wilderness/ WSA Plan; no additional water development or other habitat manipulations are undertaken to manage wildlife populations; continue aircraft surveillance and monitoring of wildlife population accordingly. Close and rehabilitate ways or travel routes within WSAs not identified during WSA inventories to motorized vehicles. Should those portions of the Great Rift Wilderness Study Area adjacent to the original Monument be designated as wilderness, designate the 660-foot strip of non-wilderness between the Craters of the Moon Wilderness boundary and the original Monument boundary as Wilderness.	(*)	(*)	(*)	(*)
Areas of Critical Environmental Concern (ACECs) (*) Could consider new ACEC nominations in next land use planning cycle.	(*) None designated	(*) None designated	(*) Designate North Laidlaw Park as an ACEC.	(*) None designated



(*)COMMON TO ALL ALTERNATIVES	ALTERNATIVE A (NO ACTION ALTERNATIVE)	ALTERNATIVE B	ALTERNATIVE C	ALTERNATIVE D (PROPOSED PLAN)
VISITOR EXPERIENCE				
Interpretation/Visitor Understanding				
(*) Develop a Comprehensive Interpretive Plan; coordinate services to meet the needs of permittees, visitors, students, educators, interest groups, and the general public; encourage partnerships at existing facilities outside the Monument; promote visitor safety and resource protection.	(*)	(*)	(*)	(*) Allow commercial outfitters and guides to offer a range of guided experiences. Emphasize safety and resource protection at access points.
(*) Focus educational programs for schools on programs on site in the original NPS Monument.	(*)	(*) Expand educational programs for school groups in the Monument.	(*)	(*) Expand education programs to off-site locations.
(*) Continue developing a variety of interpretive media for on- and off-site use; continue interpretive programs and maintaining exhibits and waysides.	(*)	(*) Develop a variety of portable media to interpret the expanded portion of the Monument.	(*) Develop a variety of portable media to interpret the expanded portion of the Monument.	(*) Develop a variety of portable media to interpret the expanded portion of the Monument.
(*) Post informational/orientation materials at all primary backcountry access points surrounding the Monument and at proposed fire stations at Carey and Kimama.	(*)	(*) Upgrade interpretive kiosks, wayside exhibits, and associated trail system and day-use area in the Kings Bowl area.	(*)	(*) Interpretation of the expanded Monument, Preserve, and Wilderness will emphasize publications, web sites, and other off-site methods.
(*) Provide developed facilities such as the Visitor Center at the original NPS Monument.	(*)	(*) Provide additional interpretive facilities along the US 20/26/93 corridor and at significant sites within the Passage Zone.	(*)	(*) Provide additional interpretive facilities along the US 20/26/93 corridor. Provide information/orientation materials regarding the Monument in gateway communities; emphasize providing new interpretive and educational materials and programs outside the expanded portion of the Monument and in partnering communities and facilities.

(*)COMMON TO ALL ALTERNATIVES	ALTERNATIVE A (NO ACTION ALTERNATIVE)	ALTERNATIVE B	ALTERNATIVE C	ALTERNATIVE D (PROPOSED PLAN)
Recreation				
(*) Utilize Idaho State Comprehensive Outdoor Recreation and Tourism Plan (SCORTP) and Outdoor Recreation Demand Assessment in implementation-level planning to assist managers in understanding the recreational use patterns, trends, and recreation facilities needed. Require permits for overnight camping in the Wilderness and/or biking or hiking in the original Monument area north of US 20/26/93; no wood fires are permitted within the original Monument.	(*) Keep existing roads open to motorized and mechanical vehicle travel.	(*) Make implementation-level planning determinations as to where specific trails, trailhead facilities, and/or number of primitive campsites could be located in the Passage Zone; develop up to 12 locations for camping in the Passage Zone. Provide increased opportunities to experience a wide range of recreation trail uses. Keep existing roads open to motorized and mechanical vehicle travel.	(*) Make implementation-level planning determinations as to where specific trails, trailhead facilities, and/or number of primitive campsites could be located in the Passage Zone; develop up to 4 locations for camping in the Passage Zone. Close all roads to unauthorized motorized and mechanized vehicle use in the Pristine Zone.	(*) Make implementation-level planning determinations as to where specific trails, trailhead facilities, and/or number of primitive campsites could be located in the Passage Zone; develop up to 6 locations for camping in the Passage Zone. Close all roads to unauthorized motorized and mechanized vehicle use in the Pristine Zone.
(*) Inventory resources and areas most vulnerable to vandalism, theft, and/or recreation use impacts. Designate areas within the Monument and periods of time when there will be no hunting and/or firearm use for reasons of public safety, administration, and/or public use and enjoyment.	(*)	(*)	(*)	(*)
(*) Promote <i>Leave No Trace</i> and <i>Tread Lightly!</i> Programs with staff and the public; provide information/orientation materials.	(*)	(*)	(*)	(*)

(*)COMMON TO ALL ALTERNATIVES	ALTERNATIVE A (NO ACTION ALTERNATIVE)	ALTERNATIVE B	ALTERNATIVE C	ALTERNATIVE D (PROPOSED PLAN)
Visual Resources				
(*) Monument managers seek cooperation of visitors, neighbors, and local governments to prevent or minimize impacts to Western landscape vistas and natural dark conditions.	(*) VRM classification – currently 3 Class IV, 2 Class II; Wilderness – Class I.	(*) Wilderness and WSAs are Class I; all other areas are Class II.	(*) Wilderness and WSAs are Class I; all other areas are Class II.	(*) Wilderness and WSAs are Class I; all other areas are Class II.
Soundscapes				
(*) Coordinate with Dept. of Defense, FAA, and Idaho Dept. of Aeronautics to minimize aircraft noise impacts. No aircraft landings associated with commercial air tours are authorized in Pristine Zone (emergency air strips are state managed and are not included in this guidance).	(*)	(*)	(*)	(*)
SOCIAL AND ECONOMIC CONDITIONS				
(*) Consider developing intergovernmental coordinating group to ensure consistency with state and local plans. Participate with interested gateway communities in jointly meeting visitor needs.	(*)	(*)	(*)	(*)

(*)COMMON TO ALL ALTERNATIVES	ALTERNATIVE A (NO ACTION ALTERNATIVE)	ALTERNATIVE B	ALTERNATIVE C	ALTERNATIVE D (PROPOSED PLAN)
RESEARCH				
(*) Require research and specimen collecting permits; emphasize the use of the Monument as an outdoor laboratory for understanding the Great Rift ecosystem; coordinate the review and approval of research applications to confirm adherence to applicable policies and compatibility with the purposes of the Monument. Facilitate the transfer of research information to the public. Assist qualified researchers and educational institutions in conducting authorized studies or field classes as feasible.	(*)	(*)	(*)	(*)

Table 8
Acreage and Mileage Calculations For All Alternatives

ALTERNATIVE A

Front Country						Passage						Primitive						Pristine					
2,300 Acres (.3% CRMO)						4,700 Acres (.6% CRMO)						290,200 Acres (38.6% CRMO)						448,800 Acres (59.6% CRMO)					
Σ	A	B	C	D	Trails	Σ	A	B	C	D	Trails	Σ	A	B	C	D	Trails	Σ	A	B	C	D	Trails
39	30	0	2	0	7	61	0	45	14	2	0	522	0	12	344	166	0	9	0	0	1	1	7

ALTERNATIVE B

Front Country						Passage						Primitive						Pristine					
2,300 Acres (.3% CRMO)						68,900 Acres (9.2% CRMO)						226,900 Acres (30.1% CRMO)						447,900 Acres (59.5% CRMO)					
Σ	A	B	C	D	Trails	Σ	A	B	C	D	Trails	Σ	A	B	C	D	Trails	Σ	A	B	C	D	Trails
39	30	0	2	0	7	262	0	57	166	39	0	314	0	0	184	127	3	6	0	0	1	1	4
						Passage Zone Outside CRMO																	
						9,000 Acres Outside CRMO																	
						Σ	A	B	C	D	Trails												
						138	0	81	56	1	0												

ALTERNATIVE C

Front Country						Passage						Primitive						Pristine					
2,300 Acres (.3% CRMO)						3,200 Acres (.4% CRMO)						201,000 Acres (26.7% CRMO)						539,500 Acres (71.7% CRMO)					
Σ	A	B	C	D	Trails	Σ	A	B	C	D	Trails	Σ	A	B	C	D	Trails	Σ	A	B	C	D	Trails
39	30	0	2	0	7	40	0	37	2	1	0	490	0	18	345	127	0	62	0	2	12	41	7

ALTERNATIVE D

Front Country						Passage						Primitive						Pristine					
2,300 Acres (.3% CRMO)						6,700 Acres (.9% CRMO)						218,700 Acres (29.1%)						518,300 Acres (68.8%)					
Σ	A	B	C	D	Trails	Σ	A	B	C	D	Trails	Σ	A	B	C	D	Trails	Σ	A	B	C	D	Trails
39	30	0	2	0	7	82	0	46	34	2	0	474	0	11	321	141	1	34	0	0	2	26	6
						Passage Zone Outside CRMO																	
						4,100 Acres Outside CRMO																	
						Σ	A	B	C	D	Trails												
						63	0	52	11	0	0												

CRMO = Craters of the Moon National Monument and Preserve

These figures summarize the existing inventory of land, roads, and trails on public land for which there was a management zone prescription. State lands are included in these figures; however, private lands are not included. Total private land makes up approximately 0.9% of the Monument. Acreage and mileage figures have been rounded to the nearest 100 acres and whole mile, respectively.



Table 9
Summary of Impacts

Alternative A (No Action Alternative)	Alternative B	Alternative C	Alternative D (Proposed Plan)
NATURAL RESOURCES			
Geological Resources			
Geological resources would be affected by continued visitor access via roads and trails, as well as by wind erosion, fire, fire suppression, and grazing. These impacts would be mainly direct and both short- and long-term in nature, ranging from negligible to potentially major levels. Indirect impacts would result from deposition of dust and soils on geological features over time. The limitation on new mineral extraction sites would result in long-term indirect negligible beneficial effects on geological resources. Although an individual geologic feature could suffer a major impact, in context of the entire Monument's geologic features/resources, the impacts would be quite localized (that is, the effect would cover only a small part of the entire Monument's land area or an individual type of geologic feature, of which there may be many).	Alternative B would have the most improved road access and the greatest number of improved roads and additional trail designations, which would result in the largest increase in visitation and/or access of all the alternatives. As a consequence, Alternative B could result in a slightly greater loss of geologic features or structures and a higher rate of degradation of geologic resources or damage from vandalism. Adverse impacts from increased access would range from negligible to potentially major, with specific concerns about direct major damage to features in the Kings Bowl and Wapi Lava Field areas. Increased fire suppression and continued grazing could result in minor to moderate adverse impacts, and small beneficial effects would result from limits on new mineral extraction areas. Although an individual geologic feature could suffer a major impact, in context of the entire Monument's geologic features/resources, the impacts would be quite localized (that is, the effect would cover only a small part of the entire Monument's land area or an individual type of geologic feature, of which there may be many).	Alternative C would have the largest area of Pristine Zone, which would afford the most natural protection to geologic features through difficult or remote, foot-only access. Closures of non-essential roads and limited access would lead to the smallest amount of dust-related impacts. Impacts from visitor damage, theft, or vandalism would range from negligible to potentially major locally, but the probability of major impacts would be lower because of decreased access for many visitors. Negligible to minor adverse impacts from fire and grazing would continue, and there would be slight beneficial effects from limits on new mineral extraction sites. Overall, Alternative C would cause the fewest adverse impacts on geologic resources of all the alternatives. Although an individual geologic feature could suffer a major impact, in context of the entire Monument's geologic features/resources, the impacts would be quite localized (that is, the effect would cover only a small part of the entire Monument's land area or an individual type of geologic feature, of which there may be many).	Alternative D (Proposed Plan), because of its aggressive restoration goals and emphasis on off-site experience, would result in beneficial effects because it would limit damage from visitors and result in restoration of many features. The erosion of roads, fires, fire suppression, and grazing would result in site-specific negligible to minor adverse impacts. Although an individual geologic feature could suffer a major impact, in context of the entire Monument's geologic features/resources, the impacts would be quite localized (that is, the effect would cover only a small part of the entire Monument's land area or an individual type of geologic feature, of which there may be many).



Alternative A (No Action Alternative)	Alternative B	Alternative C	Alternative D (Proposed Plan)
<p>Soils</p> <p>Soil disturbance, erosion, and compaction would be the primary adverse impacts associated with most management actions under Alternative A. Wildland fire and suppression, restoration activities, road and trail maintenance and use, and livestock use are the management activities most likely to affect soils. Overall, short- and long-term adverse impacts on soils would be minor to moderate in intensity, with long-term moderate beneficial effects from the restoration program.</p>	<p>Improved road and trail access, development of recreation facilities, and increased visitor use of the Monument under Alternative B might increase the amount of soil area directly and indirectly affected. Improvements to unpaved roads, trails, and day use areas and more extensive use of fire suppression would cause direct loss of soils locally, resulting in minor to moderate localized adverse impacts. Grazing also would cause minor to moderate adverse impacts. Overall, short- and long-term adverse impacts on soils from Alternative B would range from minor to moderate; the restoration program would result in long-term moderate beneficial effects.</p>	<p>The effects of Alternative C on soils would be substantially the same as those of Alternative A, with slightly more short-term erosion potential and slightly fewer long-term soil impacts. Impacts from facility construction maintenance and fire suppression would be reduced, and adverse impacts from grazing would remain minor to moderate. Overall, short- and long-term adverse impacts would be minor to moderate in intensity, with more long-term beneficial effects from a slightly expanded restoration program.</p>	<p>The effects of Alternative D (Proposed Plan) on soils would be similar to those of Alternative A, with more short-term erosion potential due to road and trail use and maintenance, facility development, and fire. Long- and short-term minor to moderate adverse impacts could result from grazing and fire suppression. Overall, short- and long-term adverse impacts would be minor to moderate. However, there would be moderate to major long-term beneficial effects on soils in the Monument, assuming successful restoration of the entire proposed acreage under this alternative.</p>
<p>Vegetation and Fire Management</p> <p>Alternative A would result in both short- and long-term negligible to moderate adverse impacts on vegetation from continued use and maintenance of roads and trails, plus illegal off-road use, spread of noxious weeds, fire suppression and fire, and continued grazing. Restoration activities and construction of facilities would cause short-term negligible to minor direct adverse impacts, but they would result in long-term indirect minor to major beneficial effects from vegetation restoration and public education.</p>	<p>Alternative B would result in a greater possibility of fragmentation, increased risk of noxious weed spread, and greater risk of human-caused fire because of increased visitation and access and more road and trail maintenance. Effects on vegetation would be both short- and long-term, ranging from negligible to moderate, but they would be more widespread than in Alternative A. Facility development would cause some long-term negligible to minor negative impacts on vegetation, but increased public education would result in minor to moderate long-term beneficial effects. Restoration acreage would be slightly greater than in Alternative A, with short-term minor adverse impacts and long-term moderate to major beneficial effects.</p>	<p>Alternative C would involve less opportunity for extensive visitor access, less access for fire suppression, less active management of noxious weeds, and a slower rate of restoration over a larger area than any other alternative. Adverse impacts on vegetation from access would be minor and limited, with few impacts from facility development and maintenance. Restoration efforts would cause long-term minor to major beneficial effects, but these would occur more slowly because fewer herbicides and more low impact methods would be used. Fires, fire suppression, and continued grazing would lead to minor to moderate adverse impacts.</p>	<p>In Alternative D (Proposed Plan), there would be more access for fire suppression and more aggressive noxious weed control, which would result in short-term minor to moderate adverse impacts but long-term moderate to major beneficial effects, occurring in a shorter time than in the other alternatives. Strategically placed restoration projects would increase the size and continuity of healthy vegetation patches and reduce the extent of poor quality vegetation. Adverse impacts from visitor access, fire and fire suppression, grazing, and facility development would be similar to those in Alternative A, with both short- and long-term minor to moderate adverse impacts. Impacts from increased access in more sensitive areas of the Monument, including Laidlaw Park, would be limited by the reduction in the Passage Zone and increase in Pristine Zone designations made in response to public comments on the Draft Plan/EIS.</p>

Alternative A (No Action Alternative)	Alternative B	Alternative C	Alternative D (Proposed Plan)
<p>Water Resources</p> <p>Implementing Alternative A would continue the current local long-term effects on water resources at intensity levels generally ranging from negligible to potentially major, although any major effects would be localized to small areas. The effects of intense recreational use of ice cave pools or from livestock watering on individual playas could create minor to moderate changes in nutrient concentrations, bacteria levels, and turbidity. The duration of effects would depend on the intensity of recreational use at each site. The effects would tend to be localized to the individual water bodies, because no surface waters connect them. The overall effect of livestock use on playas would be widespread and long-term and could range from minor to potentially major intensity, depending on the location.</p>	<p>The effects of Alternative B would be substantially the same as those of Alternative A, but with a somewhat higher likelihood of more indirect adverse effects on local ice caves and playas resulting from road improvements and increased recreational use, plus a possible increase in livestock developments. Impacts would generally range from negligible to potentially moderate, but they would be localized. Depending on the site-specific circumstances, the effects could be either short term or long term.</p>	<p>The effects of Alternative C could be substantially the same as those of Alternative A because there still would be a chance that recreational use could affect ice caves, and there could be limited impacts from grazing. However, moderate adverse impacts would potentially be less widespread or frequent because road access would be reduced.</p>	<p>The effects on water resources from Alternative D (Proposed Plan) would be much the same as Alternative A, with localized long-term effects at negligible to major intensities, depending on site location (proximity of ice caves to roads) or concentration of livestock. Implementing Alternative D (Proposed Plan) could cause local long-term effects on water resources at intensity levels ranging from negligible to potentially major. Intense recreational use could affect ice cave pools, and livestock watering could affect individual playas, causing minor to moderate changes in nutrient concentrations, bacteria levels, and turbidity. The effects would tend to be localized to individual water bodies because no surface waters connect them.</p>



Alternative A (No Action Alternative)	Alternative B	Alternative C	Alternative D (Proposed Plan)
<p>Wildlife Resources</p> <p>Under Alternative A, which would continue current conditions, effects on wildlife would continue to come primarily from conflicts with human uses of the Monument, including disturbance by people and vehicles and conflicts and competition with livestock use. Access and roads and associated visitor recreation would result in minor long-term adverse impacts, plus short-term moderate local adverse impacts on some species in high use areas. Sagebrush steppe restoration and weed management actions would cause some short-term minor impacts, with minor to major beneficial effects over the long term, depending on the species involved. Fire and suppression of fire would benefit some species but adversely affect others. The 50 sensitive species, which use all major habitats in the Monument and have a variety of life histories, would experience the same range of impacts as other wildlife. The bald eagle and the gray wolf, which are listed as threatened and endangered, are occasionally found in the Monument, but both are peripheral species, and the impacts on them would be negligible to minor. Current livestock use and potential new livestock developments, which would be authorized in accordance with the Idaho Standards for Rangeland Health and Guidelines, could result in minor to moderate adverse impacts on sagebrush steppe habitat and/or sagebrush obligate wildlife species. In the long-term, the restoration of 40,000 acres of degraded sagebrush steppe would mitigate a portion of any adverse effects on wildlife resources.</p>	<p>The impacts on wildlife from Alternative B would largely be the same as those of Alternative A, but the slight increase in acres restored would result in a related increase in improved habitat for sagebrush steppe species, a long-term minor to major beneficial effect. There could be a modest increase in adverse impacts from traffic disturbance in the larger Passage Zone area and the potential for increased or improved access to motor vehicles in that zone, as well as the development of a visitor use area in Kings Bowl and multiuse trails. The effects on wildlife would vary from species and species, but most effects would be long-term, minor to moderate, and localized.</p>	<p>The effects on wildlife from Alternative C would largely be the same as those described for Alternative A, but 15,000 more acres would be restored in Alternative C, resulting in more improved habitat for sagebrush steppe species. There would be fewer adverse impacts from traffic disturbance because the Passage Zone would be smaller in Alternative C, and the Primitive Zone would be larger. These designations would include the potential for decreased access for motor vehicles and related recreational use overall, resulting in fewer direct and indirect adverse impacts on all wildlife species.</p>	<p>The effects on wildlife from Alternative D (Proposed Plan) would be largely the same as those described for Alternative A, but twice as much acreage would be restored in Alternative D, resulting more improved habitat for sagebrush steppe species, a major long-term beneficial effect. Modest changes in the adverse impacts could result from increases in the Passage Zone roads for restoration and administration uses and in the potential for increased or improved access for motor vehicles in that zone.</p>

Alternative A (No Action Alternative)	Alternative B	Alternative C	Alternative D (Proposed Plan)
Air Resources			
Prescribed fire, wildland use fire, and fugitive dust from roads result in smoke or dust containing particles that adversely affect human health and air quality related values such as visibility. The effects on air quality from smoke and dust caused by the management activities of Alternative A typically would be short-term and local. The intensity of effects could range from negligible to moderate, depending on weather conditions and the location and size of fires. Most prescribed and wildland use fires would cause minor short-term effects. Fugitive dust from roads with current traffic use would produce short-term local adverse effects of negligible intensity.	The adverse effects on air quality from the management actions of Alternative B typically would be short term and limited to the local region. The intensity of effects would range from negligible to moderate, with most prescribed and wildland use fires having minor effects. Fugitive dust from roads with potentially increased vehicle traffic use on unpaved roads would produce short-term local effects of negligible to minor intensity. A substantial increase in traffic would be required to elevate this impact to the moderate levels.	The adverse effects on air quality from Alternative C typically would be short term and limited to the local region. The intensity of effects would range from negligible to moderate, with most prescribed and wildland use fires causing minor effects. Fugitive dust from roads with decreased traffic use and vehicle speeds would produce short-term local effects of negligible intensity.	The adverse effects on air quality from the actions of Alternative D (Proposed Plan) typically would be short term and limited to the local region. The intensity of effects would range from negligible to moderate, with most prescribed and wildland use fires causing minor effects. Fugitive dust from roads with current traffic use would produce short-term local effects of negligible intensity. The addition of non-Monument sources occurring during the same time period could produce more intense but still moderate effects throughout the Monument.
CULTURAL RESOURCES			
Alternative A would have a negligible to minor, adverse impact on maintaining the long-term integrity of the majority of archaeological resources within the Monument. The restoration program outcome and fire suppression would have a long-term, moderate beneficial effect, while initial restoration, suppression actions, grazing, and vehicle travel would result in short-term, minor to moderate adverse impacts.	Alternative B would have a moderate adverse effect on maintaining the long-term integrity of the majority of archaeological resources within the Monument by emphasizing recreational opportunities and vehicle access. The restoration program outcome and fire suppression would have a long-term, moderate beneficial impact, where vehicle travel, grazing, initial restoration, and suppression actions would result in short-term minor to moderate adverse impacts.	Alternative C would have a minor beneficial effect on maintaining long-term integrity of the majority of archaeological resources within the Monument by minimizing the amount of human and vehicle traffic into the Primitive and Pristine Zones. The restoration program outcome, fire suppression, and restricted access would all contribute to long-term, minor to moderate beneficial impacts. Vehicle traffic (limited), grazing, initial restoration, and suppression actions would result in short-term, minor to moderate adverse impacts.	Alternative D (Proposed Plan) would have a moderate beneficial effect on maintaining the long-term integrity of the majority of archaeological resources within the Monument by emphasizing off-site interpretation and visitor services, and by emphasizing aggressive range restoration. Short-term minor to moderate adverse impacts would also occur from vehicle travel, initial restoration activities, suppression actions, and grazing.



Alternative A (No Action Alternative)	Alternative B	Alternative C	Alternative D (Proposed Plan)
NATIVE AMERICAN RIGHTS AND INTERESTS			
Alternative A would have a negligible to minor, beneficial impact on maintaining the long-term integrity of ethnographic resources and traditional use areas within the Monument.	By emphasizing recreational activities and vehicle access, Alternative B would result in a minor to moderate adverse effect on maintaining the long-term integrity of ethnographic resources and traditional use areas in the Monument.	By minimizing the amount of human and vehicle traffic into the Primitive and Pristine Zones, Alternative C would result in a minor beneficial effect on maintaining the long-term integrity of ethnographic resources and traditional use areas in the Monument, but by limiting vehicle access it could cause some hardship for elderly tribal members.	By emphasizing off-site interpretation, off-site visitor services, and range restoration, Alternative D (Proposed Plan) would result in a minor to moderate beneficial effect on maintaining the long-term integrity of the ethnographic resources and traditional use areas in the Monument, but by limiting vehicle access it could cause some hardship for elderly tribal members.
LAND USE AND TRANSPORTATION			
Travel and Access Actions under Alternative A would cause minor adverse impacts on travel and access in the Monument, with long-term minor beneficial effects from completed restoration and road maintenance activities.	By emphasizing recreational opportunities and increased access, Alternative B would cause a long term minor to moderate adverse effect on road conditions in the Monument, but it also would lead to a long-term moderate beneficial effect on the availability of access and ease of travel to many locations in the Monument.	By closing more miles of road in the Monument, Alternative C would cause minor to moderate adverse impacts on access. Reduced vehicle traffic could result in minor beneficial effects on transportation safety, but there also might be minor adverse impacts on travel safety from visitors using lower standard roads.	By emphasizing off-site interpretation, off-site visitor services, and long-term range restoration, Alternative D (Proposed Plan) would lead to long-term minor beneficial effects on access and road conditions in the Monument.
Livestock Grazing Restoration activities and restrictions in the Pristine Zone in Alternative A could restrict grazing operations and/or increase costs associated with grazing, resulting in short- and long-term minor to moderate adverse impacts. The use of the Passage Zone for potential road improvement and facility development would result in short- and long-term minor beneficial effects, but the potential increased recreational use of this area could cause minor to moderate adverse impacts. Alternative A would have the third largest Pristine Zone, which could restrict or increase the costs associated with grazing.	Restoration activities and restrictions in the Pristine Zone under Alternative B could restrict or increase costs associated with grazing, resulting in short- and long-term moderate adverse impacts on grazing, but larger Passage Zone areas and the development of good access could result in road improvement and facility development, which would cause short- and long-term minor to moderate beneficial effects. The increased recreational use and access in this area could cause minor to moderate adverse impacts.	Restoration activities and restrictions in the Pristine Zone under Alternative C could restrict or increase the costs associated with grazing, resulting in moderate short- and long-term adverse impacts on grazing. The smaller number of areas in the Passage Zone would allow for some access and facility development, a negligible to minor beneficial effect, but any increased recreational use would cause minor adverse impacts on grazing operations. The large amount of Pristine Zone could increase costs and limit access, causing moderate adverse impacts on grazing.	Alternative D (Proposed Plan) would involve the largest acreage identified for restoration; this would cause short-term moderate adverse impacts on grazing operations, but the long-term effects would be beneficial. The use of an expanded Passage Zone for potential road improvement and facility development and potentially more recreational use would result in minor to moderate beneficial effects from increased access and more ability to create new facilities. The Pristine Zone could restrict or increase the costs associated with grazing, a moderate adverse impact.

Alternative A (No Action Alternative)	Alternative B	Alternative C	Alternative D (Proposed Plan)
Other Land Uses Alternative A would result in negligible impacts on administrative facilities, realty, and minerals in the Monument.	Alternative B would cause negligible effects on realty and minerals in the Monument and a minor adverse impact on administrative facilities.	By minimizing the amount of human and vehicle traffic into the Primitive and Pristine Zones, Alternative C would cause long-term minor beneficial effects on the Monument's administrative facilities, realty, and minerals.	Because of its emphasis on off-site interpretation and visitor services, Alternative D (Proposed Plan) would result in negligible impacts on administrative facilities, realty, and minerals in the Monument.
Special Designation Areas The effects on the characteristics and purposes of special designation areas from Alternative A would be primarily negligible to minor and short term, but the effect of livestock use on natural conditions in WSAs could be moderate in some local areas where livestock concentrate, and the vegetative structure would be altered for long periods of time (5+ years). Road system management and limited regulation of off-highway vehicle use could cause negligible to moderate adverse indirect effects through the spread of invasive weeds and the creation of unauthorized routes.	The effects on the characteristics and purposes of special designation areas from Alternative B would be primarily negligible to minor and short term, but the effects from livestock use on natural conditions in WSAs could be moderate in some local areas where livestock concentrate, and vegetative structure would be altered for long periods of time (5+ years). The improvements to the road system could cause higher levels of indirect adverse effects through the spread of invasive weeds and the creation of unauthorized routes.	The adverse effects on the characteristics and purposes of special designation areas from most actions under Alternative C would be primarily negligible to minor and short term. The effect of livestock on natural conditions in WSAs could be moderate in some local areas where livestock concentrate, and vegetative structure would be altered for long periods of time (5+ years). The lack of access and limited Passage Zone acreage could cause indirect adverse effects if grazing was expanded to certain areas, with potential indirect adverse effects through the spread of invasive weeds and the creation of unauthorized routes. Designating a new ACEC in North Laidlaw Park would lead to minor beneficial effects on the adjacent Craters of the Moon Wilderness and Great Rift WSA.	The adverse effects on the characteristics and purposes of special designation areas from Alternative D (Proposed Plan) would be mostly negligible to minor and short-term, with potential for more intense effects if restoration activities took place in or near any of the areas. The effect of livestock on natural conditions in WSAs could be moderate in some local areas where livestock concentrate, and vegetative structure would be altered for long periods (5+ years). Road system management and limited regulation of off-highway vehicle use could cause indirect adverse effects through the spread of invasive weeds and the creation of unauthorized routes. The additional Pristine Zone and reduction of Passage Zone in the Laidlaw Park area, compared to Alternative D as presented in the Draft Plan/EIS, would provide indirect beneficial impacts to an area that had been discussed as an ACEC candidate during the scoping for this project.



Alternative A (No Action Alternative)	Alternative B	Alternative C	Alternative D (Proposed Plan)
VISITOR EXPERIENCE			
Interpretation and Visitor Understanding			
Posting information at backcountry access points and fire stations; offering school programs at the original NPS Monument; interpreting cultural resources; adding interpretive media, programs, exhibits, and waysides; and modest development in the Kings Bowl area would cause long-term minor beneficial effects on interpretation and visitor understanding, as would agency assistance to research and educational institutions. In addition, long-term major benefits would result from expanding the existing Monument Visitor Center.	Upgrading the Carey-Kimama and Arco-Minidoka Roads; offering school programs at the original NPS Monument; interpreting cultural resources; adding interpretive media, programs, exhibits, and waysides; and developing portable interpretive media would result in long-term minor beneficial effects on interpretation, as would agencies assisting research and educational institutions, developing a cave restoration program, and interpreting sagebrush steppe restoration and integrated weed management. Short-term negligible adverse impacts would result from upgrading the Carey-Kimama and Arco-Minidoka Roads. Long-term minor beneficial effects on interpretation would result from adding interpretive facilities along US 20/26/93, at significant sites within the Passage Zone, and at Kings Bowl. Long-term major beneficial effects would come from expanding and developing new facilities at the existing Visitor Center.	Posting information at backcountry access points and fire stations, offering school programs at the original NPS Monument, developing portable interpretive media, and establishing a limited cave restoration program under Alternative C would result in long-term minor beneficial effects on interpretation. There would be cumulative effects from Cooperative Weed Management Area programs. Long-term, major benefits would result from expanding the existing visitor center.	Long-term minor beneficial effects on interpretation under Alternative D (Proposed Plan) would result from placing interpretive signs and information along the US 20/26/93 corridor and at access points; offering school programs (including off-site efforts) and off-site interpretation of cultural resources; posting interpretive media, programs, exhibits, and waysides; developing portable off-site interpretive media; and modest development in the Kings Bowl area. Agency assistance to research and educational institutions and an intensive cave restoration program also would cause long-term minor beneficial effects. Long-term moderate beneficial effects would come from placing interpretive materials, facilities, and programs outside the Monument, in gateway communities and at a visitor center along the I 84 corridor, as well as from offering commercially guided services in the Monument. Long-term major benefits would accrue from expanding the existing Visitor Center. Commercial guide services could cause long-term minor adverse impacts on people visiting the interior of the Monument without a guide.
Recreation and Public Safety			
Alternative A would result in a wide range of negligible to moderate adverse and beneficial effects on recreation and public safety, depending on the recreational experience desired. Acquiring private inholdings would result in long-term negligible to minor beneficial effects, as would greater protection of geological features in the expanded part of the Monument; safety emphasis through	The added access available in Alternative B would contribute both beneficial and adverse effects, depending on the type of recreation desired. Acquiring private inholdings would result in long-term negligible to minor beneficial effects, as would greater protection of geological features in the expanded part of the Monument, safety emphasis through interpretation, restoring sagebrush steppe	The restricted access of Alternative C would contribute beneficial and adverse effects, depending on the type of recreation desired. Acquiring private inholdings would result in long-term negligible to minor beneficial effects, as would greater protection of geological features in the expanded part of the Monument, safety emphasis through interpretation, restoring sagebrush steppe communities, limited facility developments	The added access available in Alternative D (Proposed Plan) would contribute both beneficial and adverse effects, depending on the type of recreation desired. Acquiring private inholdings would result in long-term negligible to minor beneficial effects, as would greater protection of geological features in the expanded part of the Monument, safety emphasis through interpretation, developing or improving

Alternative A (No Action Alternative)	Alternative B	Alternative C	Alternative D (Proposed Plan)
<p>interpretation, restoring sagebrush steppe communities, trail development and rehabilitation in the Kings Bowl area, developing or improving facilities, closing certain ways in Wilderness areas and WSAs; and authorizing commercial outfitters and guides. Short-term minor beneficial effects would result from wildland fire suppression. Long-term moderate beneficial effects would result from greater protection of geological features in the original NPS Monument and indirectly from restoring sagebrush steppe communities. Keeping almost all existing roads open to motorized travel would result in long-term minor beneficial effects on certain recreational experiences, but such access also could affect other recreational experiences, resulting in long-term minor adverse impacts.</p> <p>Long-term minor beneficial effects would result from the availability of undeveloped and dispersed camping, but this also could affect people who prefer more developed, dispersed camping, resulting in long-term minor adverse impacts.</p> <p>Ongoing livestock operations would result in long-term minor to moderate adverse impacts on certain recreational experiences, but this also could affect other recreational opportunities, resulting in long-term negligible to minor beneficial effects.</p>	<p>communities, developing and rehabilitating trails in the Kings Bowl area, developing or improving facilities, closing certain ways in Wilderness areas and WSAs, and authorizing commercial outfitters and guides. Short-term minor beneficial effects would result from wildland fire suppression, and short-term negligible adverse impacts would result from wildland fire use.</p> <p>Long-term moderate beneficial effects would result from greater protection of geological features in the original NPS Monument, from designating multiuse and single-use trails, and developing or improving facilities. There would be indirect long-term moderate benefits from restoring sagebrush steppe communities.</p> <p>Improving motorized access would result in long-term moderate beneficial effects on certain recreational experiences, but it also could result in long-term moderate adverse impacts on other recreational experiences.</p> <p>Long-term moderate beneficial effects would result from the availability of undeveloped and dispersed camping, but this also could result in minor long-term adverse effects on people who prefer more developed, dispersed camping.</p> <p>Ongoing livestock operations would result in long-term minor to moderate adverse impacts on certain recreational experiences, but this also could affect other recreational opportunities, resulting in long-term negligible to minor beneficial effects.</p>	<p>and improvements, closing certain ways in Wilderness areas and WSAs, and authorizing commercial outfitters and guides. Short-term minor beneficial effects would result from wildland fire suppression, and short-term negligible adverse impacts would result from wildland fire use.</p> <p>Long-term moderate beneficial effects would result from greater protection of geological features in the original NPS Monument, and there would be indirect long-term moderate benefits from restoring sagebrush steppe communities.</p> <p>Long-term minor beneficial effects on certain recreational experiences would come from converting many Class D roads to non-motorized trails, but such conversion also would affect other recreational experiences, causing long-term minor adverse impacts.</p> <p>Closing certain roads and ways in the Pristine Zone to motorized and mechanized vehicle travel would result in long-term moderate beneficial effects on certain recreational experiences, but long-term minor adverse impacts also would result from such closures, affecting other recreational experiences.</p> <p>These closures also would result in long-term moderate adverse impacts from reduced access. Long-term minor beneficial effects would result from the availability of undeveloped and dispersed camping, but this also could adversely affect people who prefer more developed, dispersed camping, resulting in long-term minor adverse impacts.</p> <p>Ongoing livestock operations would result in long-term minor to moderate adverse impacts on certain recreational experiences, but this also could affect other recreational opportunities, resulting in long-term negligible to minor beneficial effects.</p>	<p>facilities, and closing certain ways in Wilderness areas and WSAs.</p> <p>Short-term negligible to minor beneficial effects would result from temporary improvements to Class C and D roads that could accommodate certain authorized activities, as well as from wildland fire suppression. Short-term negligible adverse impacts would result from wildland fire use, and short-term minor adverse impacts would result from aggressive rehabilitation.</p> <p>Long-term minor to moderate beneficial effects would result from authorizing commercial outfitters and guides, and long-term moderate beneficial effects would come from greater protection of geological features in the original NPS Monument and from restoring sagebrush steppe communities.</p> <p>Long-term minor beneficial effects on certain recreational experiences would result from closing Class D roads or converting them to non-motorized trails to trails in the Primitive and Pristine Zones, but such conversion also would affect other recreational experiences, causing long-term minor adverse impacts.</p> <p>Long-term moderate beneficial effects would result from the availability of undeveloped and dispersed camping, but this also could affect people who prefer more developed, dispersed camping, resulting in long-term minor adverse impacts.</p> <p>Ongoing livestock operations would result in long-term minor to moderate adverse impacts on certain recreational experiences, but this also could affect other recreational opportunities, resulting in long-term negligible to minor beneficial effects.</p>

Alternative A (No Action Alternative)	Alternative B	Alternative C	Alternative D (Proposed Plan)
<p>Visual Resources</p> <p>Long-term minor beneficial effects on visual resources would result from greater protection of geologic features, from restoring sagebrush steppe communities, and from holding surface disturbing activities to the VRM management class standards that apply in Alternative A.</p> <p>Artificial light sources would cause long-term negligible cumulative adverse impacts. Long-term minor adverse impacts would result from existing livestock facilities and, cumulatively, from communications sites during the day. Long- and short-term minor adverse impacts would result from the use of existing mineral material sites. Long-term moderate adverse impacts would result from communications sites at night.</p> <p>Class B road use would cause short-term minor adverse impacts, and short-term minor to moderate adverse impacts would be caused by wildland fires and prescribed fires. Short-term negligible to moderate cumulative adverse impacts would result from outside sources of air pollution.</p>	<p>Long-term minor beneficial effects on visual resources would result from greater protection of geologic features and from restoring sagebrush steppe communities. Long-term minor to moderate beneficial effects would come from holding surface-disturbing activities to VRM management class standards that apply in Alternative B.</p> <p>Artificial light sources would cause long-term negligible cumulative adverse impacts. Long-term minor adverse impacts would result from existing livestock facilities and, cumulatively, from communications sites during the day. Long- and short-term minor adverse impacts would be caused by the use of existing mineral material sites. Long-term moderate adverse impacts would result from communications sites at night.</p> <p>Road upgrades would cause short-term minor cumulative adverse impacts, and short-term minor to moderate adverse impacts would result from Class B road use. Short-term minor to moderate adverse impacts would be caused by wildland fires and prescribed fires. Short-term negligible to moderate cumulative adverse impacts would result from outside sources of air pollution.</p>	<p>Long-term minor beneficial effects on visual resources would result from greater protection of geologic features; long-term minor to moderate beneficial effects would come from restoring sagebrush steppe communities; and long-term moderate beneficial effects would result from holding surface- disturbing activities to VRM management class standards that apply in Alternative C.</p> <p>Artificial light sources would cause long-term negligible cumulative adverse impacts. Long-term minor adverse impacts would result from existing livestock facilities and, cumulatively, from communications sites during the day. Long- and short-term minor adverse impacts would result from the use of existing mineral material sites. Long-term moderate adverse impacts would result from communications sites at night.</p> <p>Class B road use would cause short-term minor adverse impacts, and short-term minor to moderate adverse impacts would be caused by wildland fires and prescribed fires. Short-term negligible to moderate cumulative adverse impacts would result from outside sources of air pollution.</p>	<p>Long-term minor beneficial effects on visual resources would result from greater protection of geologic features; long-term minor to moderate beneficial effects would result from holding surface-disturbing activities to VRM management class standards that apply in Alternative D (Proposed Plan), and restoring sagebrush steppe communities would create long-term moderate beneficial effects.</p> <p>Artificial light sources would cause long-term negligible cumulative adverse impacts. Long-term minor adverse impacts would result from existing livestock facilities and, cumulatively, from communications sites during the day. Long- and short-term minor adverse impacts would result from the use of existing mineral material sites. Long-term moderate adverse impacts would result from communications sites at night</p> <p>Class B road use would cause short-term minor adverse impacts, and short-term minor to moderate adverse impacts would be caused by wildland fires and prescribed fires. Short-term negligible to moderate cumulative adverse impacts would result from outside sources of air pollution.</p>

Alternative A (No Action Alternative)	Alternative B	Alternative C	Alternative D (Proposed Plan)
<p>Soundscapes</p> <p>The effects on natural soundscapes in the Monument would result mainly from transportation, administrative uses, and grazing. The use of the US 20/26/93 corridor would cause long-term minor adverse impacts. Short-term negligible to minor adverse impacts would result from the use of various vehicles in the Monument, from fire management operations, and from livestock operations. Air operations would cause short-term minor adverse impacts.</p>	<p>The effects on natural soundscapes in the Monument would result mainly from transportation, administrative uses, and grazing. Some increased noise would come from more use of the Passage Zone. The use of the US 20/26/93 corridor would cause long-term minor adverse impacts. Short-term negligible to minor adverse impacts would result from the use of various vehicles in the Monument, from fire management operations, and from livestock operations. Air operations would cause short-term minor adverse impacts.</p>	<p>The effects on natural soundscapes in the Monument would result mainly from transportation, administrative uses, and grazing. The use of the US 20/26/93 corridor would cause long-term minor adverse impacts. Short-term negligible to minor adverse impacts would result from the use of various vehicles in the Monument, from fire management operations and from livestock operations. Air operations would cause short-term minor adverse impacts.</p>	<p>The effects on natural soundscapes in the Monument would result mainly from transportation, administrative uses, and grazing. The use of the US 20/26/93 corridor would cause long-term minor adverse impacts. Short-term negligible to minor adverse impacts would result from the use of various vehicles in the Monument, from fire management operations, and from livestock operations. Air operations would cause short-term minor adverse impacts.</p>
<p>Social and Economic Conditions</p> <p>Alternative A would result in a negligible adverse or beneficial effect on the number of annual visitors to the Monument, length of stay, or visitor spending. There would be no direct, indirect, or cumulative effects on the regional economy or any economic or social indicator, other than moderate adverse impacts related to a gradual loss of mineral leases. Alternative A would not affect the rural character around the Monument.</p>	<p>Alternative B would result in a moderate increase in the annual number of visitors, would lengthen visitors' stay, and would increase recreational spending per visit. This moderate increase in visitors and visitor spending would result in a negligible effect on the local economy; a negligible or minor effect on local employment rates and per capita income; a negligible effect on the local population, health care, education, and crime rates around the Monument; and a moderate adverse or beneficial effect on visitor satisfaction. A moderate adverse impact would result from the gradual loss of mineral leases.</p>	<p>Alternative C would result in a negligible adverse or beneficial effect on the annual number of visitors to the Monument and Preserve, the length of visitors' stay, and the amount of visitor spending. There would be negligible direct, indirect, or cumulative effects on the regional economy or any economic or social indicator, other than the moderate adverse impacts from the gradual loss of mineral leases. Alternative C would not affect the rural character around the Monument.</p>	<p>Alternative D (Proposed Plan) would result in a moderate increase in the annual number of visitors, the length of visitors' stay, and the amount of recreational spending per visit. This moderate increase in visitors and visitor spending would result in a negligible effect on the local economy; a negligible or minor effect on local employment rates and per capita income; a negligible effect on the local population, health care, education, and crime rates around the Monument; and a moderate adverse or beneficial effect on visitor satisfaction. A moderate adverse impact would result from the gradual loss of mineral leases.</p>

