



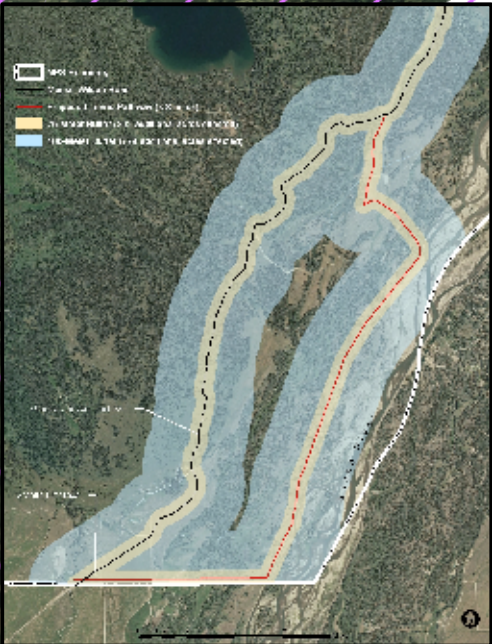
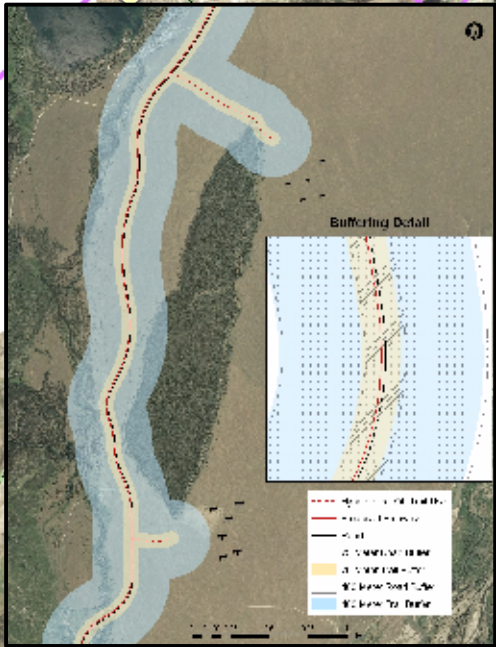
Wildlife Impact Analysis

North Jenny Lake Junction to Colter Bay Pathway Segment:

- area of high grizzly bear density
- significant human safety risks
- increase risk of bear food conditioning and habituation
- increase risk of bear mortality

Pathways will facilitate the ability of visitors to stop anywhere along the route and venture off road. Two results are predicted: 1) wildlife may move further from road sides, and 2) some species will be displaced from important habitats

An alternative considering a separated pathway along the Snake River dike through the Moose - Wilson Road corridor was dismissed because of unacceptable wildlife impacts.



Moose - Wilson Road Corridor:

- habitat impacts proportionally higher due to habitat richness and species diversity
- proximity to Snake River riparian area and base of Teton Range
- important wildlife travel corridor

Separated Pathway

Pathway Constructed/Proposed by Others

Road

Heavy-duty

Medium-duty

Light-duty

Unimproved dirt

Alternative 4

Improved Road Shoulder

New Road Alignment

Remove Road and Restore

Airport

Campground

Entrance

Picnic Area

Visitor Center

Occupied Grizzly Bear Habitat

Grizzly Bear Recovery Zone

75-Meter Trail Buffer

400-Meter Trail Buffer