

South Side - Main Entrance



NOTE: Flat facade of building is distorted in panoramic view

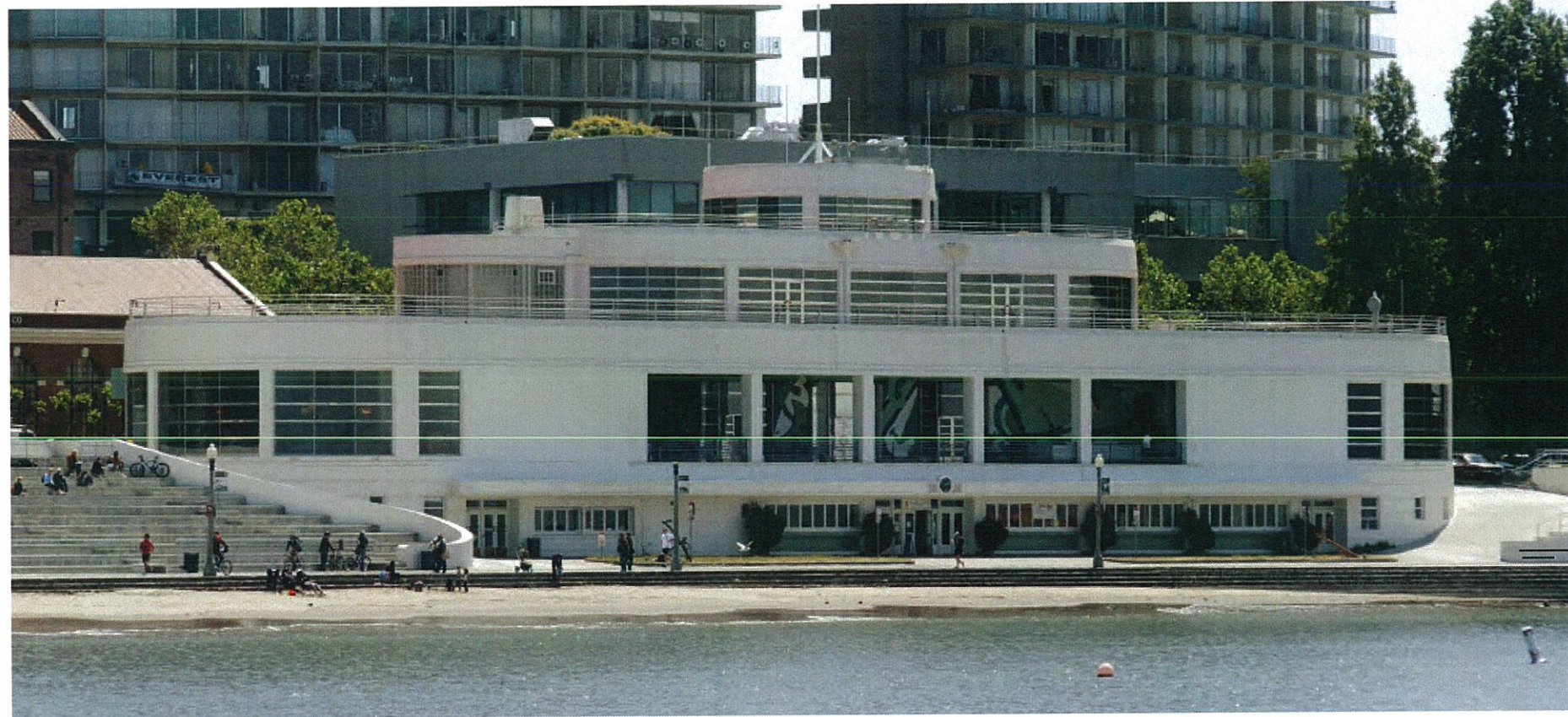


A FRONT



Aquatic Park Bathhouse
Maritime Museum
San Francisco Maritime National Historical Park
900 Beach Street, SF 94109
March 2013

NORTH SIDE - Back



DETAIL



There is no public entry to museum on this side.

A BACK



Aquatic Park Bathhouse

Maritime Museum
San Francisco Maritime National Historical Park
900 Beach Street, SF 94109
March 2013

EAST SIDE - side view from across Aquatic Park



View across Aquatic Park

A E SIDE



Aquatic Park Bathhouse

Maritime Museum
San Francisco Maritime National Historical Park
900 Beach Street, SF 94109
March 2013