



Metro Memorial Park Environmental Assessment

Public Scoping Meeting

February 28, 2013

6:00 p.m.

Agenda

Welcome and Purpose of Meeting

– Kym Elder, Rock Creek Park

Project Background

– Tony Robinson, Director of Public Affairs, District of Columbia

NEPA and Section 106 Process and Issues

– Alan Harwood, AECOM

Project Description

- Marcos Miranda, Project Manager, District of Columbia

Opportunity for Public Comment

Agenda

Welcome and Purpose of Meeting

Kym Elder, Rock Creek Park

Purpose of Meeting

- **Present project background**
- **Discuss environmental and historic preservation process**
 - Environmental impacts
 - Historic resources effects
 - Opportunities for public comment
- **Present site location alternatives**
- **Comments**

Agenda

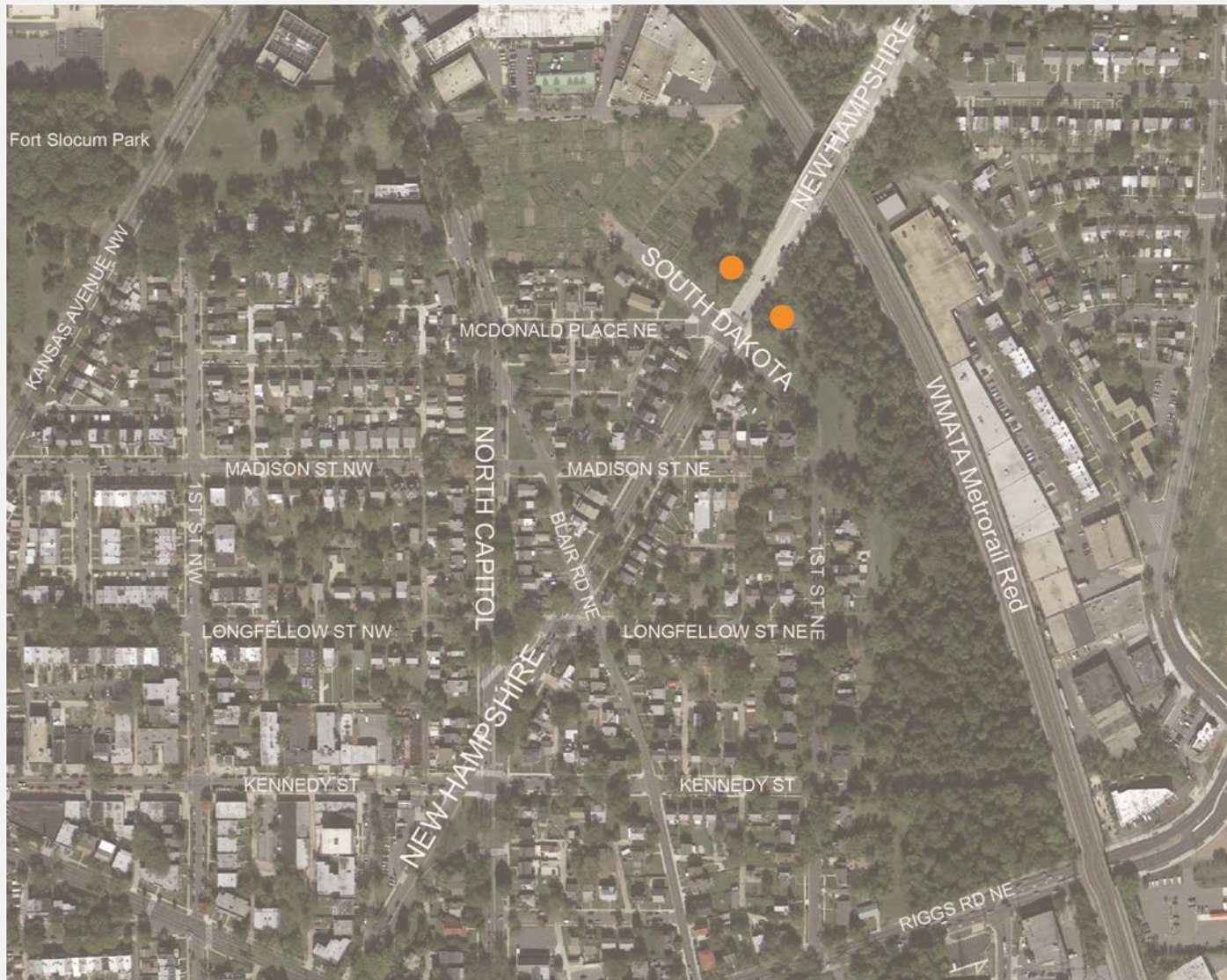
Project Background

Tony Robinson, Director of Public Affairs, District of Columbia

Project Background

- **Red Line train accident claimed the lives of nine victims, left 80 injured and 12 children orphaned on June 22, 2009.**
- **District seeks to establish a memorial**
- **RFP issued for artists**
- **Site Selection Study evaluated sites**
 - **Evaluated 8 sites**
 - **Narrowed to 2 sites for further study**

Site Location Map



Agenda

NEPA and Section 106 Process and Issues

Alan Harwood, AECOM

Project Sponsor



**District of
Columbia**

Agencies



Purpose and Need

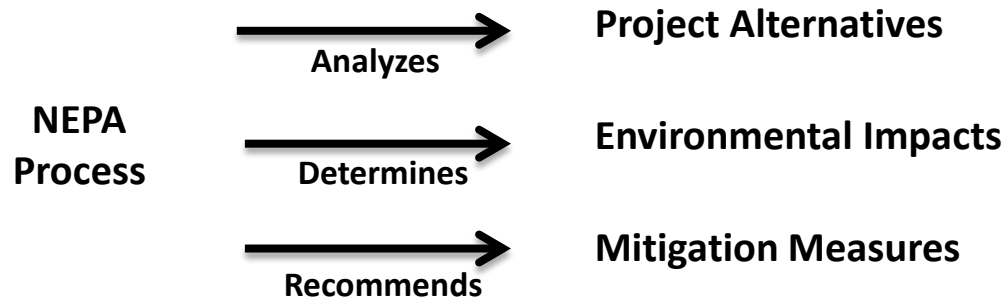
- **Purpose of the Memorial**
 - Honor victims of the 2009 crash
 - Celebrate the heroism of first responders
 - Uplift the community
- **Needed to provide a permanent place of commemoration to replace the temporary memorial on bridge**
- **Sites require transfer of jurisdiction from NPS to District**

What is NEPA?

National Environmental Policy Act of 1969

(NEPA; Public Law 91-190; 42 U.S.C. 4321 *et seq*)

- Established a national policy for **protecting the environment** and requires evaluation of alternative actions
- Goal: To ensure **informed decision-making**
- Can conclude with an EA and Finding of No Significant Impact (FONSI) or an EIS and Record of Decision (ROD)

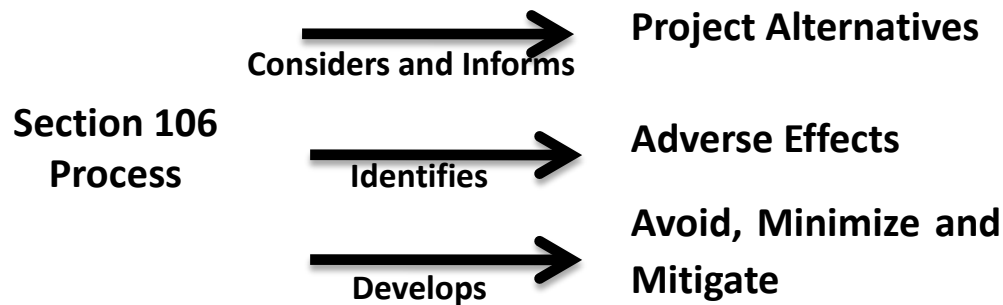


What is Section 106?

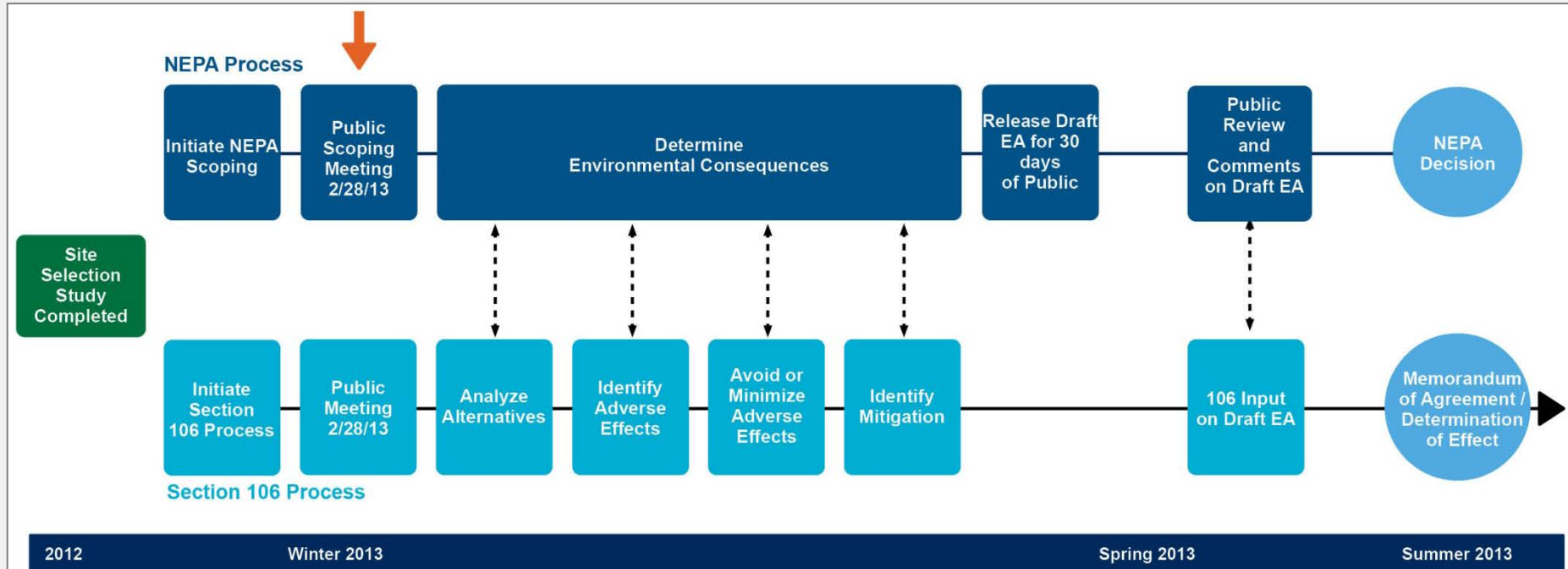
Component of National Historic Preservation Act of 1966

(NHPA; Public Law 89-665; 16 U.S.C. 470 *et seq.*)

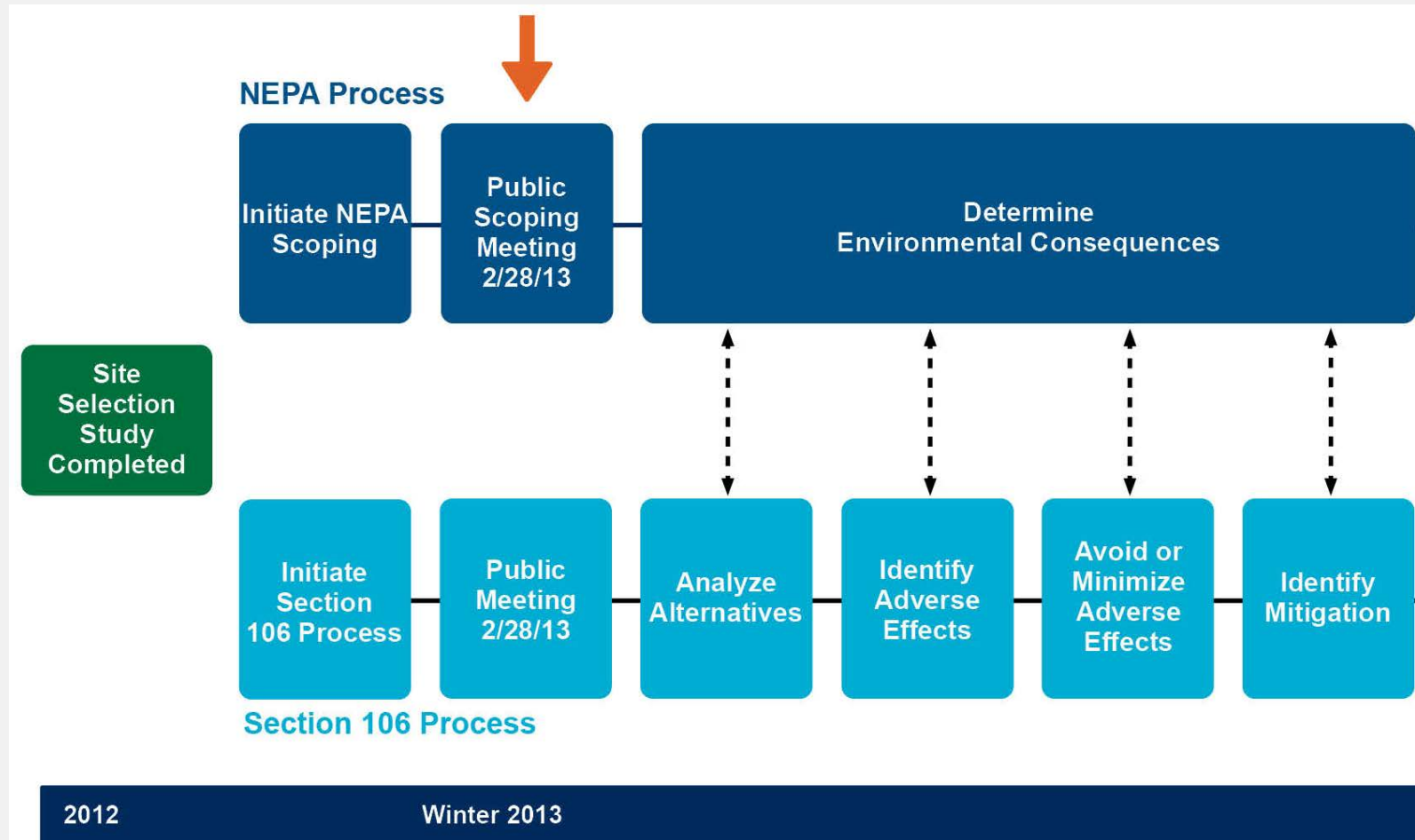
- Established a process to **protect resources** listed on, or eligible for listing on, the National Register of Historic Places, and requires the consideration of alternatives if effects on historic resources are anticipated
- Goal: To **minimize potential harm** and damage to historic properties
- Can conclude in a Determination of No Adverse Effect or a Memorandum of Agreement with Consulting Parties



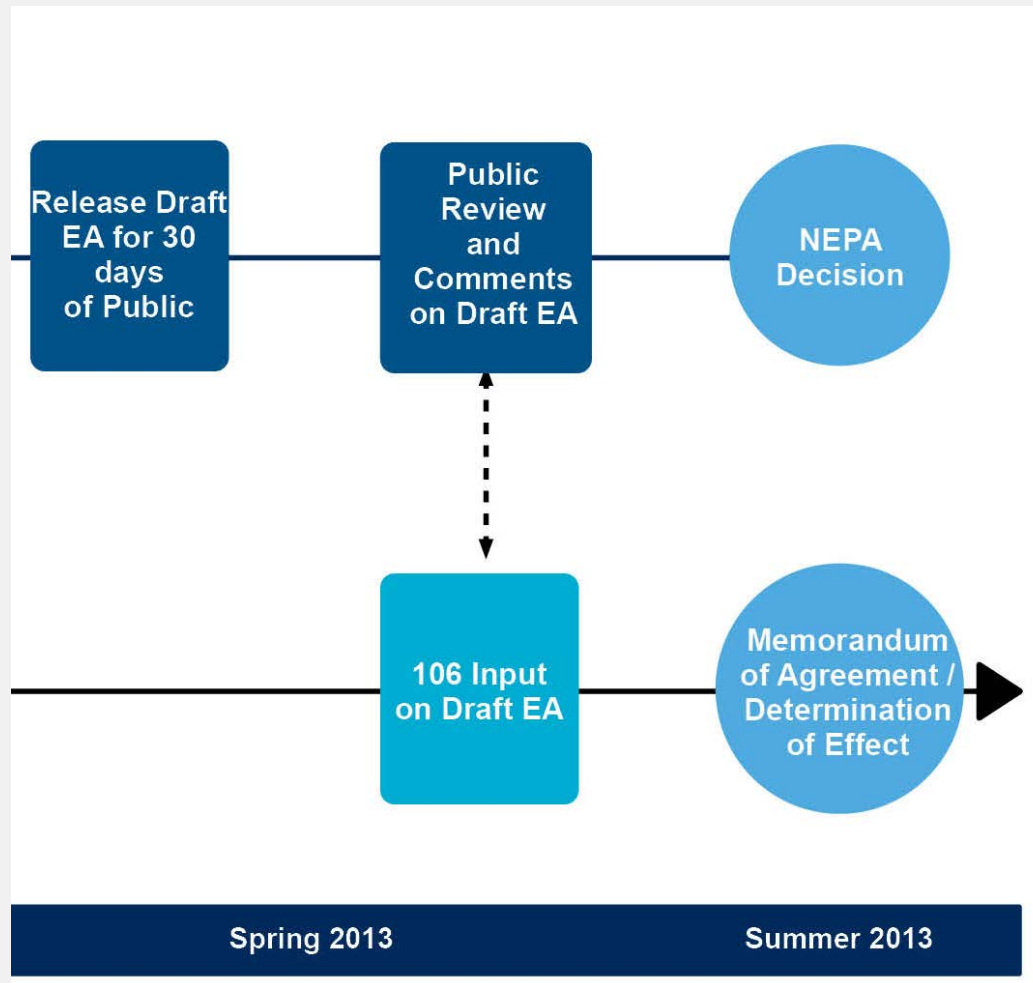
NEPA and Section 106 - A Coordinated Approach



NEPA and Section 106 – Winter 2013



NEPA and Section 106 – Spring/Summer 2013



Section 106 Participants

- State Historic Preservation Office
- Advisory Council on Historic Preservation
- National Capital Planning Commission
- Commission of Fine Arts
- National Trust for Historic Preservation
- General Public



What Issues Will the EA Address?

- **Cultural Resources**
 - Historic Resources
 - Archeology
 - Visual Resources
- **Other Issues**
 - Land Use
 - Utilities
 - Park Operations
 - Visitor Use and Experience
- **Transportation**
 - Traffic Operations
 - Pedestrian Circulation
- **Natural and Physical Resources**
 - Soils
 - Vegetation
 - Water Resources
 - Stormwater

Section 106/Historic Resources



How Can You Submit Comments?

- During this Meeting
 - Comment Cards
 - Comment Stations
- After this Meeting
 - On-line: <http://parkplanning.nps.gov/rocr>
 - Fax: (703) 549-9134
 - Written Comments can be sent to:
Attn: Metro Memorial Park EA
NPS
c/o AECOM
675 N. Washington St.
Alexandria, VA 22314

Agenda

Memorial Site Selection Overview

**Marcos Miranda, Project Manager, District of
Columbia Department of General Services**

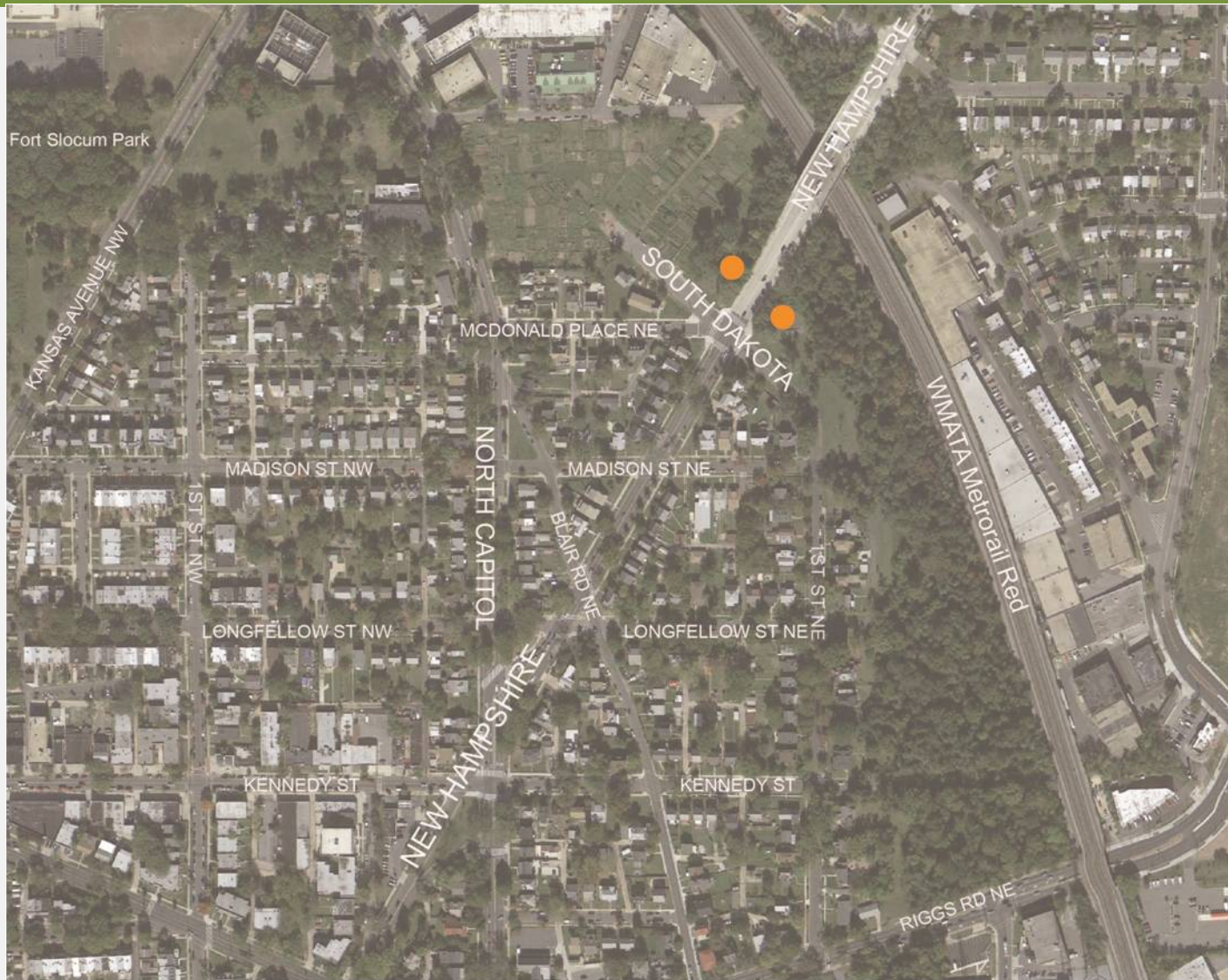
Site Selection Process

DPR Site Overview



- Began evaluating sites in 2010
- Initially identified 7 sites for consideration
 - 6 District of Parks and Recreation Sites
 - 1 NPS site

Site Location Map



South Dakota and New Hampshire NE: North and East of Intersection

- **Highly visible**
- **Proximity to incident site**
- **Part of the NPS Fort Circle Park System**
- **Listed as Reservation 497**



Site 1: South Dakota and New Hampshire NE, East of Intersection



Site 1: South Dakota and New Hampshire NE, East of Intersection

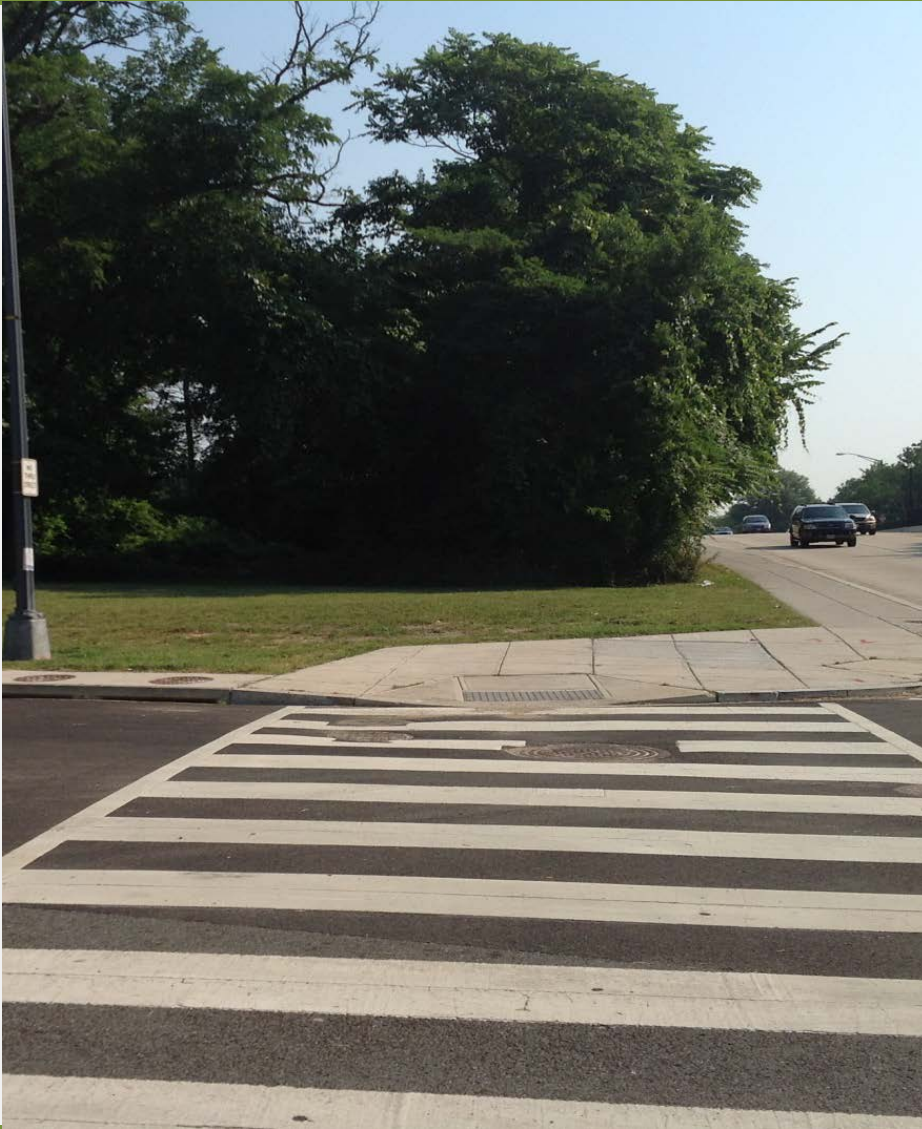
- **Frequently used by local community**
- **Part of a large contiguous swath of Circle Fort Park System**



Site 2: South Dakota and New Hampshire NE, North of Intersection



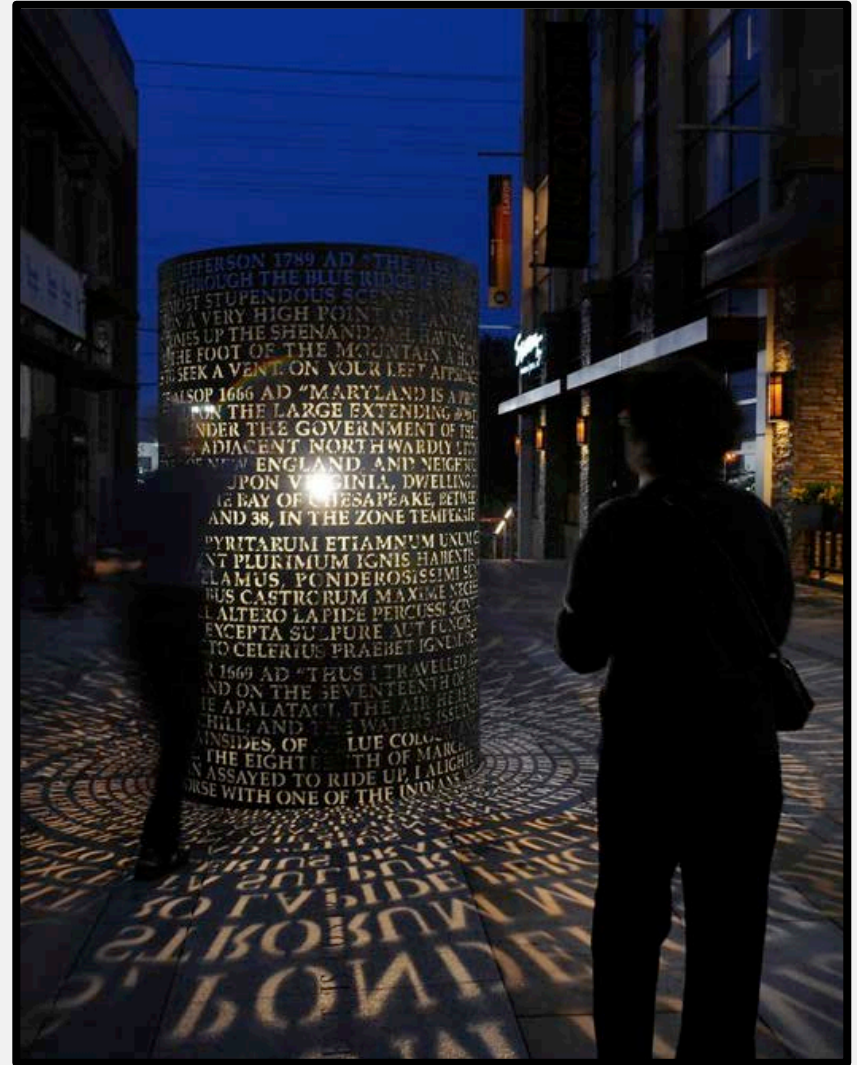
Site 2: South Dakota and New Hampshire NE, North of Intersection



- Next to community garden
- On dead-end portion of North Dakota Avenue

Possible Memorial Elements

- Sculptural element
- Plaque
- Small plaza
- Landscape features



Agenda

Opportunity for Public Comment