



GMP Preferred Alternative Newsletter

Dear Friends of Lake Clark:

The National Park Service is currently developing a general management plan (GMP) amendment for Lake Clark National Park and Preserve, which will provide updated direction for managing the park over the next 15 to 20 years. Also, at this time, the National Park Service is updating the wilderness eligibility status for two sections of land in the eastern portion of the park.

In April of 2012, we held public meetings on the preliminary alternative concepts and draft management zones and asked for your ideas and concerns regarding these alternatives. Taking your feedback into account, the planning team has developed a preferred alternative for amending the existing 1984 general management plan.

In this newsletter, we would like to share information about the preferred alternative. The planning team is currently preparing the GMP Amendment/ Environmental Assessment and anticipates releasing the plan to the public for review during the summer of 2013.

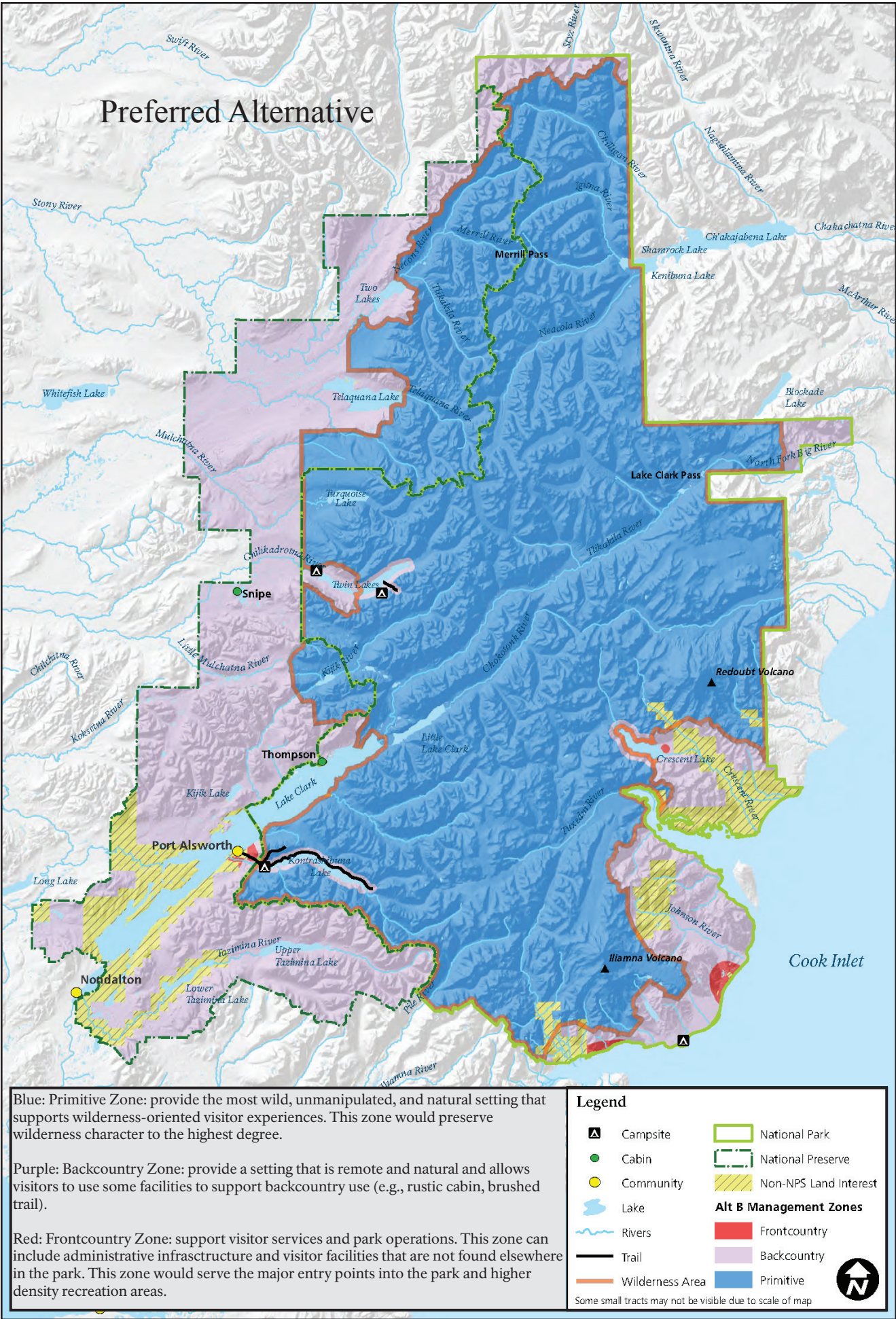
We continue to invite your participation in this planning effort. Sharing your ideas and concerns for management of Lake Clark National Park and Preserve will strengthen the planning process and help us make the best decisions for the park.

I appreciate your interest in Lake Clark National Park and Preserve and look forward to working together to chart the future of this spectacular place.

Sincerely,

Margaret L. Goodro

Margaret L. Goodro
Superintendent
Lake Clark National Park and Preserve



The preferred alternative would expand opportunities for a diversity of visitor activities and would protect and maintain wilderness and park resources. This alternative would provide for more prescriptive management in areas that receive higher visitor use, such as in the preserve, near Lake Clark, and in some coastal areas. Other changes would include opening several existing cabins for public use, expanded interpretive services and commercial activities, backcountry hiking trails, and water routes. A range of management actions would be available to protect the resources in high-use destination areas. A modest approach to improved infrastructure would be provided.

Key Elements of the Preferred Alternative



additional five cabins would be subject to a cabin management plan.

- Provide interpretive exhibits in the historic public use cabins. Expand visitor contact opportunities through partnerships.

• The following existing trails would continue to be maintained: Port Alsworth area trails including the Tanalian Mountain and Beaver Loop trails, the trail to the falls and to Kontrashibuna Lake; the Joe Thompson Trail; Teetering Rock trail and Hope Creek trail to First Canyon. NPS would improve accessibility of some trails and brush some routes to provide expanded opportunities.

- Encourage primitive camping throughout the park. Improve management of camping areas to address resource impact issues. Some areas may include designated sites with a leveled tent site, pit toilet, or fire ring while the general area remains primitive.

- Provide improved restroom facility at Port Alsworth, a public bear-resistant pit toilet and day-use storage facility at Silver Salmon Creek. Explore possible future locations for bear-proof storage and human waste disposal.

Approval of the GMP does not guarantee funding. Park operations would continue as funded and implementation of the elements in this plan not be funded within the life of the plan and full implementation may be many years into the future.

- Proenneke site managed as an open air exhibit. Visitors would have the opportunity for both NPS-led and self-guided visits. NPS staff would be on-site during the summer to provide interpretation and ensure protection of the resources.

- Boat storage and/or rentals in specified locations on Kontrashibuna Lake administered either by the National Park Service or limited new commercial services aimed at improving visitor access and recreation opportunities. On Crescent Lake, seasonal storage would occur through a land use assignment.

- Up to five existing cabins would be designated for public use. The Joe Thompson and Snipe Lake cabins would be two of the possible five. None of the cabins would be in designated wilderness. An additional five (for a total of 10) may be improved and designated in the future to accommodate emerging uses and mitigate future resource damage. The designation of an