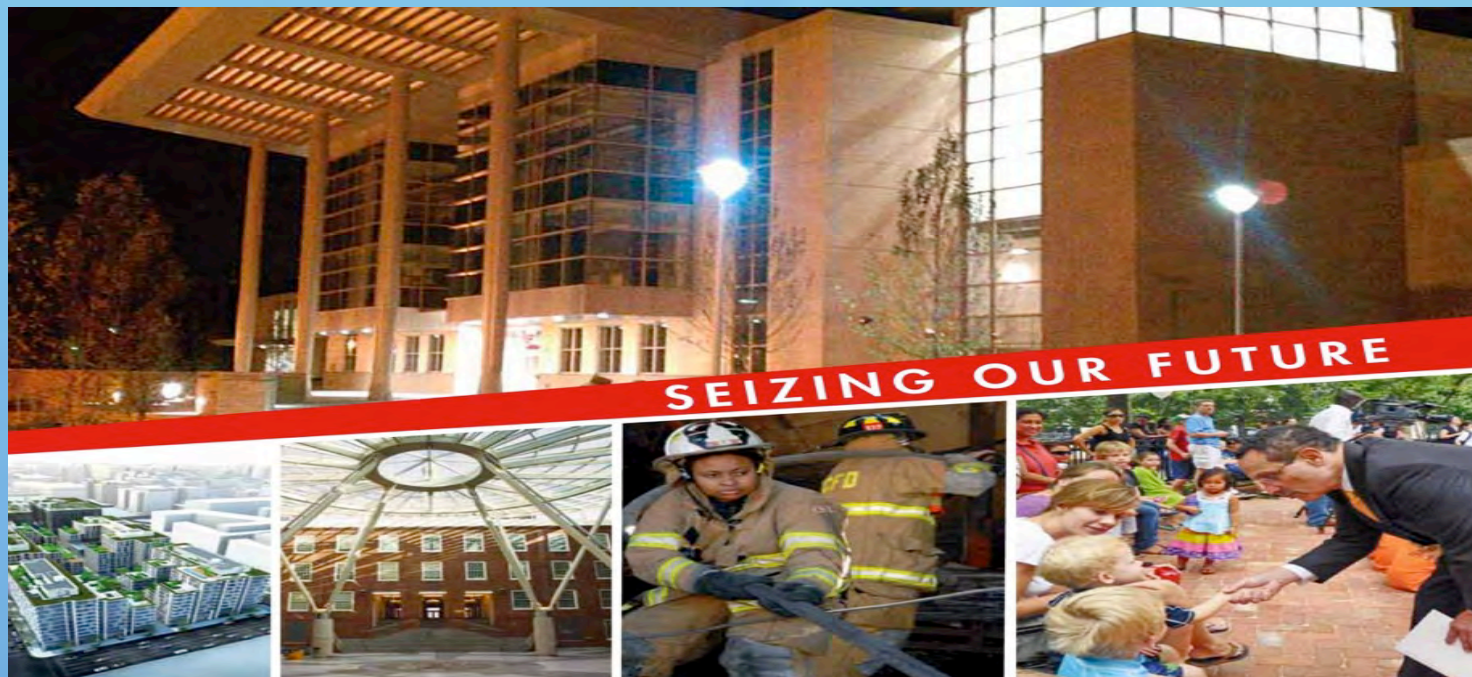




Site Selection Process for Memorial Park & Garden in Honor of Crash Victims

Greater Saint Paul Baptist Church
5720 New Hampshire Avenue, NE

Thursday, June 28, 2012
7:00 PM





A Memorial for an Unimaginable Tragedy

- *On June 22, 2009, the Washington region experienced a horrific event that claimed the lives of nine victims, left 80 injured and 12 children orphaned.*
- *The Metro crash that day was the deadliest accident in the system's history, and one of the worst rail accidents ever. It united those victims in a common tragic destiny and has impacted the families and the community in ways that reverberate still.*
- *To honor the victims, celebrate the heroism of the first responders and uplift the community, Mayor Gray has commissioned a memorial plaque and initiated planning for a memorial park and garden.*





A Memorial for an Unimaginable Tragedy

“As events and circumstances unveil in the present, a memorial’s destiny is to recall the past and provide conditions for new responses in the future. As our psycho-political and ethical companions, memorials should help us consider trauma and rethink and reactualize the past. They should encourage critical consciousness, committed memory-work, and the possibility of engaging with the world through transformative practices.”

From “On Memory, Trauma, Public Space, Monuments and Memorials” by Julian Bonder





A Memorial for an Unimaginable Tragedy

What This Project Is *NOT*:

- *NOT A PLAYGROUND*
- *NOT A MULTI-MILLION DOLLAR DEVELOPMENT*
- *NOT A PARK*





A Memorial for an Unimaginable Tragedy

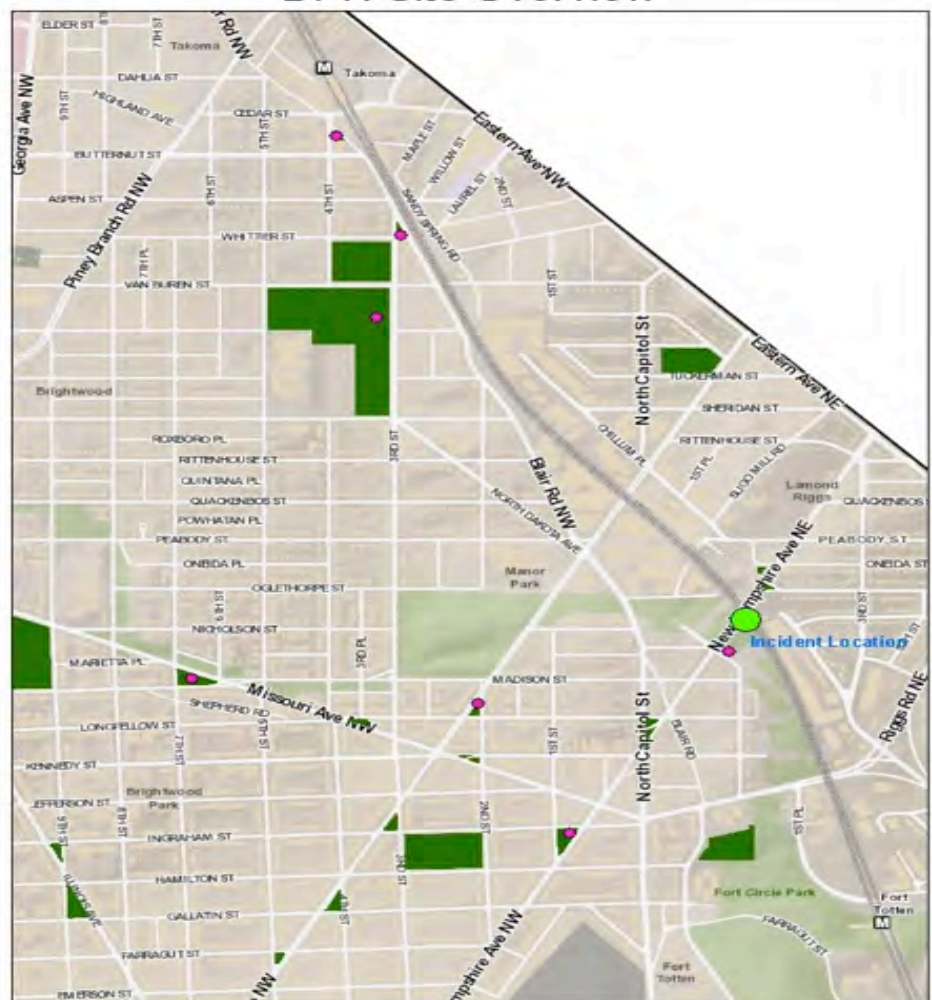
What This Project *IS*:

- *A small memorial with a signature piece of art by a local artist.*
- *Tastefully landscaped garden with native plants & flowers*
- *A place of repose, reflection and remembrance*
- *A cooperative, inclusive project to provide an amenity for the community and comfort for the relatives of the victims*





DPR Site Overview



Site Selection Process

Map Overview of 6 DPR Sites and 1 NPS Site



Government of the District of Columbia

Vincent C. Gray, Mayor

Allen Y. Lew, City Administrator



Takoma Recreation and Aquatic Center

(16.7 acres)



- Metro stop .25 miles along Red Line
- Recreation center, Aquatic center
- Picnic tables, benches
- Great parking





4th and Blair Street NW

(.17 acres or 7405 sf)



- Metro stop 2 min walk
- Shopping, restaurants
- Lights
- Benches, trash cans



Government of the District of Columbia

Vincent C. Gray, Mayor

Allen Y. Lew, City Administrator



Blair, 3rd and Whittier ST NW

(.13 acres, 5662 sf)



- Metro Stop
.25 miles
- Close to
Takoma Park
- Metro rail
visible
- High Visibility
- On street
parking





Missouri, 7th and Madison NW

(.81 acres, 35 283 sf)

- Residential location
- High Visibility
- On street parking





Kansas, 2nd and Longfellow NW

(.23 acres, 10 018.8 sf)



- Residential Location
- On- street location



Government of the District of Columbia

Vincent C. Gray, Mayor

Allen Y. Lew, City Administrator

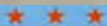


New Hampshire, 1st and Ingraham NW

(.61 acres, 26 571.6 Sq Ft)



- Residential Location
- On street parking
- .25 miles from incident location



Government of the District of Columbia

Vincent C. Gray, Mayor

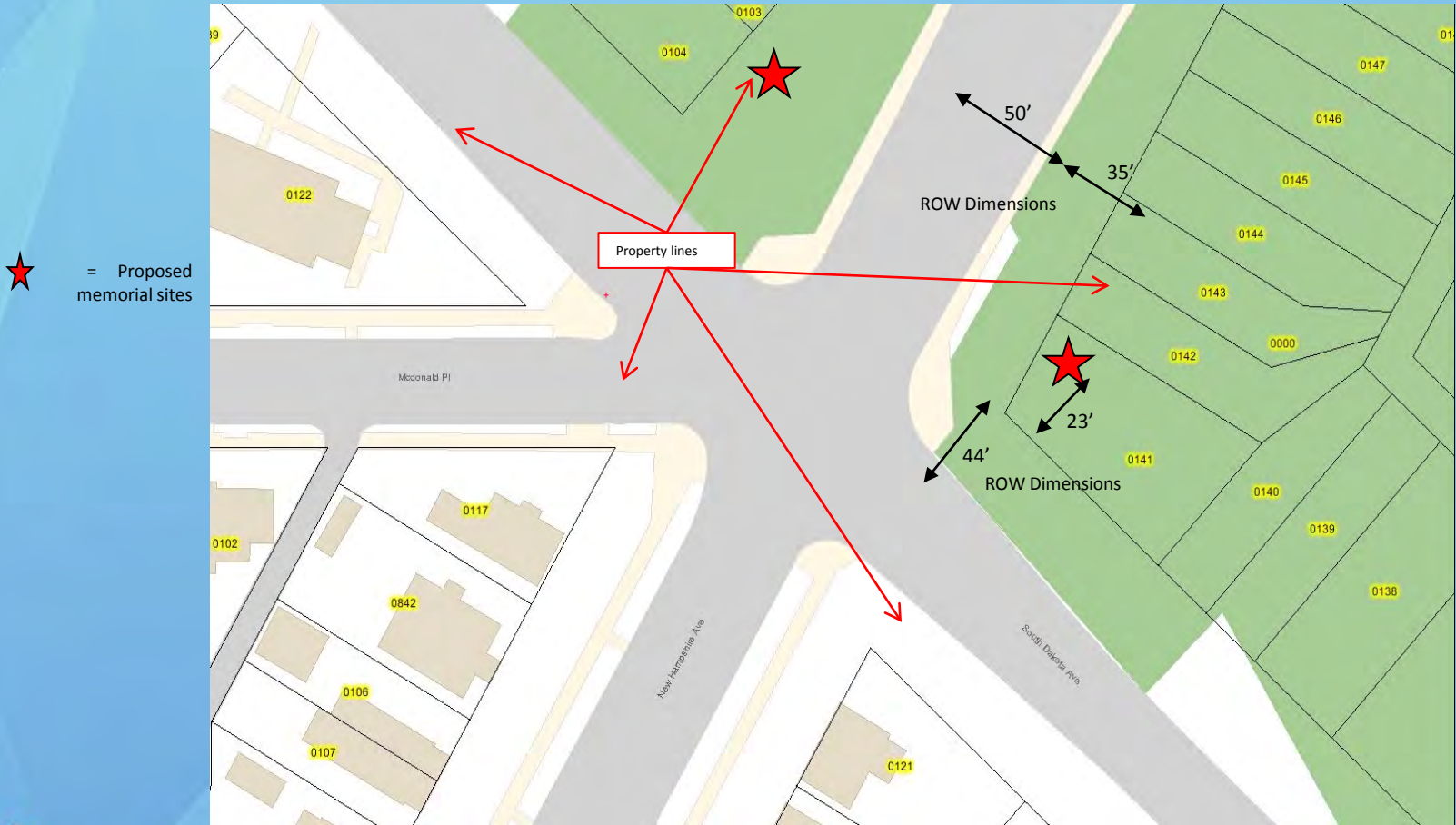
Allen Y. Lew, City Administrator



Reservation 497-Part of Fort Circle Park

South Dakota and New Hampshire NW

A memorial could be placed in DDOT ROW at these sites





Reservation 497-Part of Fort Circle Park

South Dakota and New Hampshire NW



- North side of N.H. Ave
- Great location-high visibility at Incident location



Government of the District of Columbia

Vincent C. Gray, Mayor

Allen Y. Lew, City Administrator



Reservation 497-Part of Fort Circle Park

First Street and New Hampshire NW



- South side of N.H. Ave in front of community gardens
- Great location- high visibility at Incident location





Memorial Possibilities: Constance Marin Memorial

DESIGN STATEMENT

ENTRANCE STELE

A stone stele marks the entrance to the park. The stele is engraved with the park's name, names of municipal officials and park supporters, and dedication date.

ENGRAVED PATH

Leading from the stele and into the park is an engraved stone pathway. The design—a stylized flower—was inspired by a single petunia discovered growing in the currently vacant, rubble-filled lot. The flowing design creates a sense of forward-motion, drawing the visitor along the path and into the park, engaging the visitor in a metaphorical journey symbolic of the idea of community service as a "path" or "journey."

MEMORIAL STELE

The engraved path continues into the heart of the park, ending at a large stone bench situated at the apex of a triangle formed by the bench/open seating area/play area. The bench's location is reflective of community service—that is, being in the thick of things—yet it is somewhat set apart, among verdant plantings and a bubbling fountain which provide some sense of separation, and peace and quiet, for personal reflection.

The memorial stele is engraved with Ms. Maffin's image and a synopsis of her contributions to the community and city through her years of dedicated service in both professional and private life. Engraved, also, are comments on community service. There is ample space for future engravings, for example, of the names of other community members who have made significant contributions in community service.

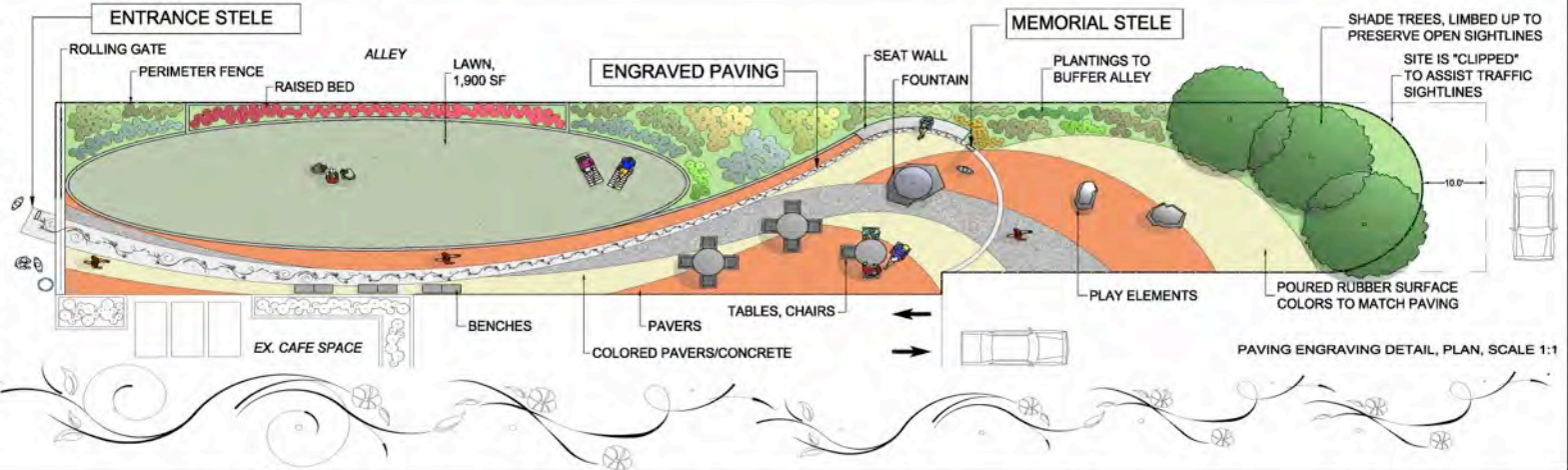
(Engraved text shown is for illustrative purposes only.)

S.A.F.

ENTRANCE STELE, SECTION, SCALE 1:1



SEAT WALL AND MEMORIAL STELE, ELEVATION, SCALE 1:1



DRAFT

10TH STREET PARK, NW, WASHINGTON, D.C.

MEMORIAL TO CONSTANCE MAFFIN AND COMMUNITY SERVICE

ILLUSTRATIVE DRAWING, OPTION B: ENGRAVED DESIGN

DC PARKS & RECREATION
OFFICE OF PLANNING & CAPITAL PROJECTS
SHERRY FREAR, ASLA

JULY 15, 2009



Memorial Possibilities



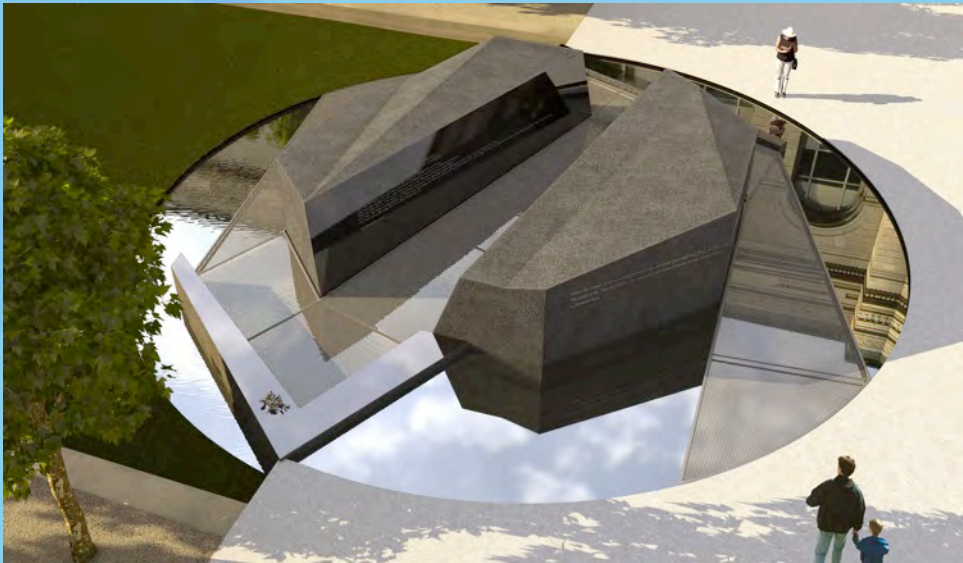


Memorial Possibilities





San Francisco Veterans Memorial





Glass Memorial in New Orleans by Washingtonian Artist Tim Tate



Government of the District of Columbia
Vincent C. Gray, Mayor
Allen Y. Lew, City Administrator



Memorial in Memphis dedicated to local hero Tom Lee





Q & A

