



# Welcome

## Purpose of Tonight's Meeting:

- To provide an opportunity to comment on the proposed relocation of a section of Montgomery County's MacArthur Boulevard Shared-Use Path onto National Park Service land at Glen Echo Park/Clara Barton National Historic Site analyzed in the Environmental Assessment / Assessment of Effect (EA/AoE).



Project goals include: improved safety, minimal impacts to resources, opportunity for interpretation of historic resources





# Purpose and Need

## Purpose:

- The purpose of the proposed action is to provide a safe location for the shared-use path between Oxford Road and the original entrance to Glen Echo Park in such a way as to ensure the protection of park resources and values.

## Need:

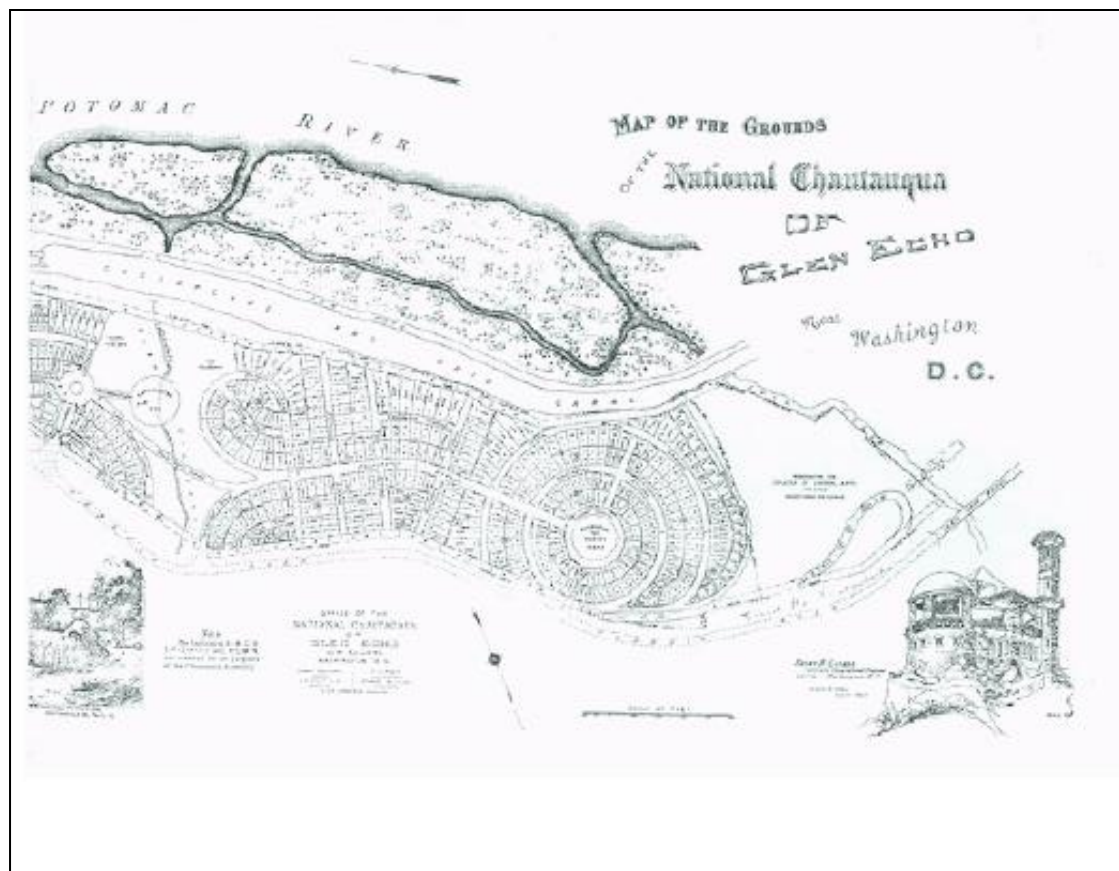
- The proposed action is needed to improve the safety of the existing bikeway, which currently lacks proper identification signage, pavement markings, lane designations, vehicular and bikeway approach signs, and physical separation from the roadway at this complex traffic circle.







# Site History



National Chautauqua Assembly of Glen Echo is established and the American Red Cross Building is constructed

1891



Washington and Glen Echo Railroad is extended to the Chautauqua grounds. It's name is changed to Washington Railway & Electric Company and operates until 1961

1896



Clara Barton returns to Glen Echo as her permanent home. It also becomes the headquarters for the American Red Cross

1897



Glen Echo Park closes. GSA transfers the park to NPS in 1976

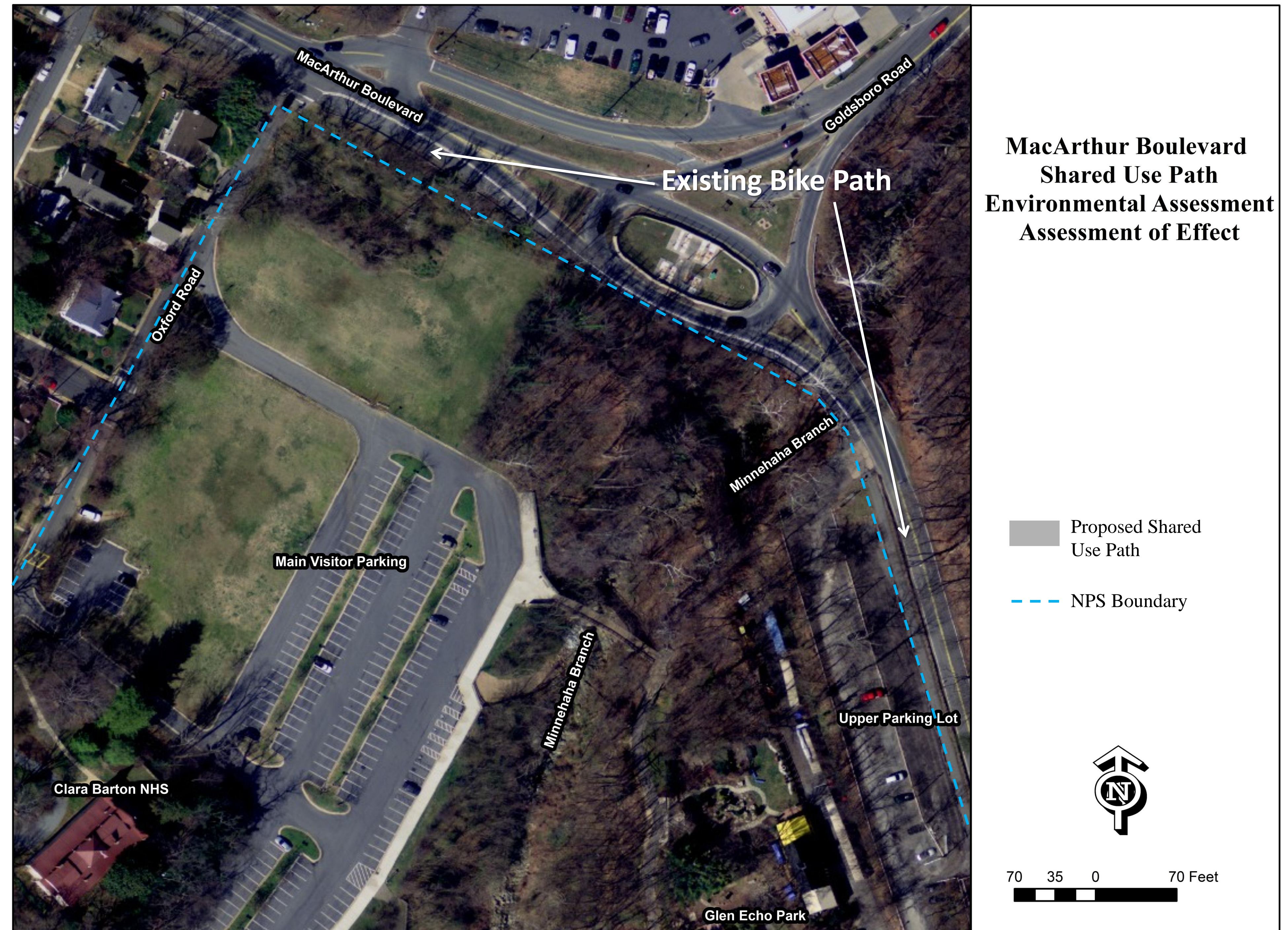
1968





# Alternative 1 (No Action)

- No permit provided
- Until proposed MacArthur Boulevard roadway improvements occur, current shared-use path safety deficiencies like poor signage and no automobile traffic separation would continue
- Proposed MacArthur Boulevard roadway work would reduce path to three foot shoulders and could lead to more pedestrian and cyclist safety concerns
- Provides basis for comparison with other alternatives





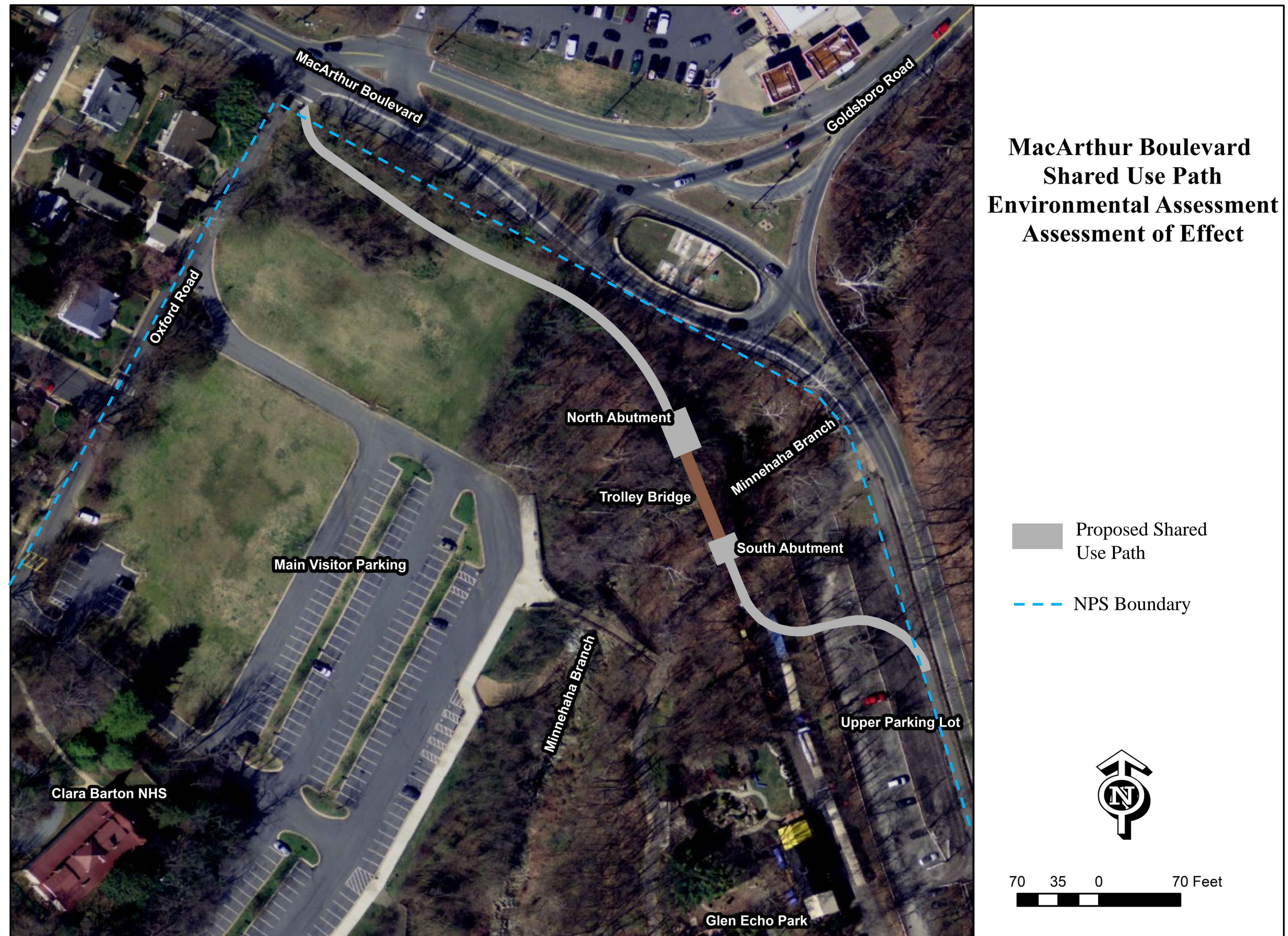


# Alternative 2

## (Preferred Alternative)

### Highlights:

- New shared-use path
- Rehabilitated trolley bridge
- Crossing of existing parking lot reduced by six to eight spaces
- Slight increase in impervious pavement
- Safety signage and markings at lot crossing, as well as a choker at upper lot entrance; a raised bike path; a raised island at the "left exit" sign to improve visibility; removal of tree near this exit sign to facilitate turning movements







# NEPA Process

Public Scoping



Analysis of Public Scoping Comment



Prepare Draft Environmental  
Assessment/Assessment of Effect



Opportunity for Public Review and  
Comment on EA/AoE

**We are here**



Analysis of Public Comment On EA/AoE



Decision to Prepare  
Finding of No Significant Impact or  
Environmental Impact Statement (EIS)



Minnehaha Creek  
Original Photo taken by GF 2012

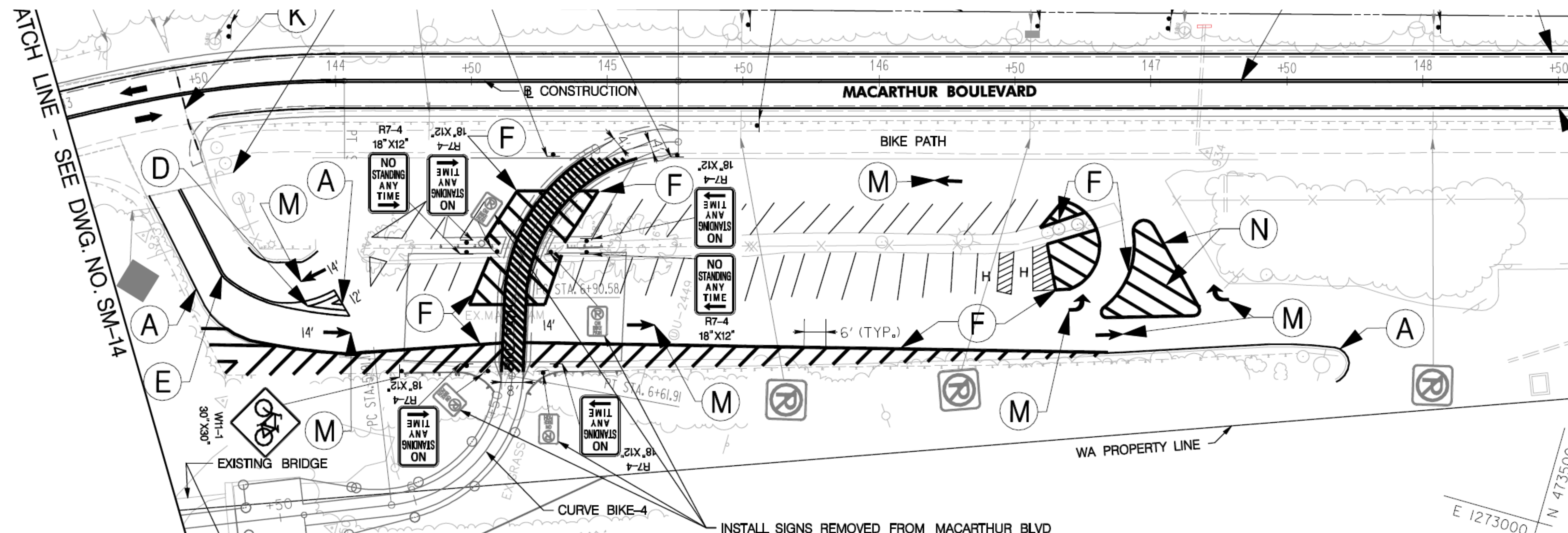
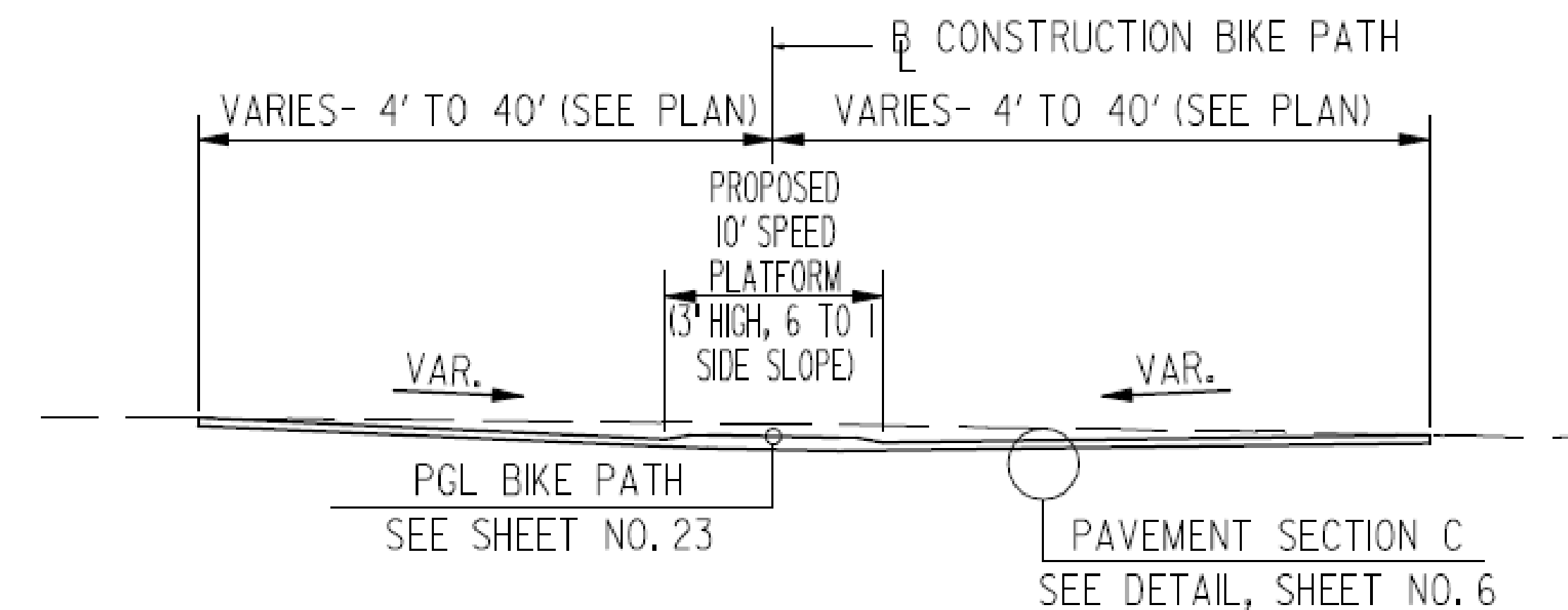
In accordance with Section 106 of the National Historic Preservation Act, an Assessment of Effect on cultural resources was prepared and included with the Environmental Assessment. NPS commits to additional S106 consultation as the plan elements are further developed.





# Proposed Safety Features for the Upper Lot in Preferred Alternative

- Speed platform
- Various pavement markings and signage





# Project Schedule / Next Steps

Preparation of the Environmental Assessment/Assessment of Effect (EA/AoE)	2009 to 2012
EA/AoE Public Comment Period	January 9 <sup>th</sup> to February 8, 2013
<b>Public Meeting</b>	<b>January 24, 2013</b>
Analysis of Public Comments	February 2013
Preparation of Decision Document	Winter 2013
Complete Site Development Plan	Summer 2013

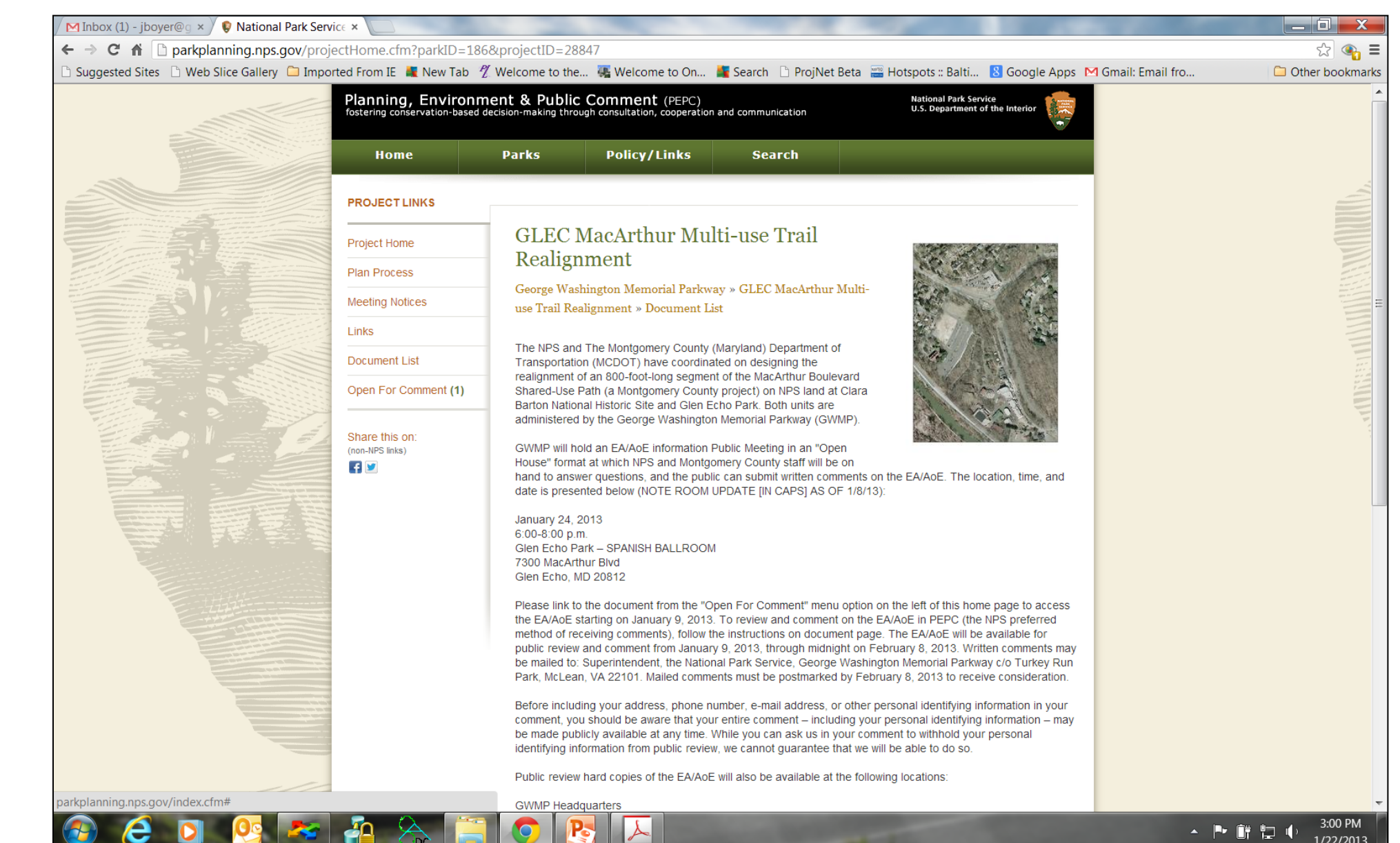
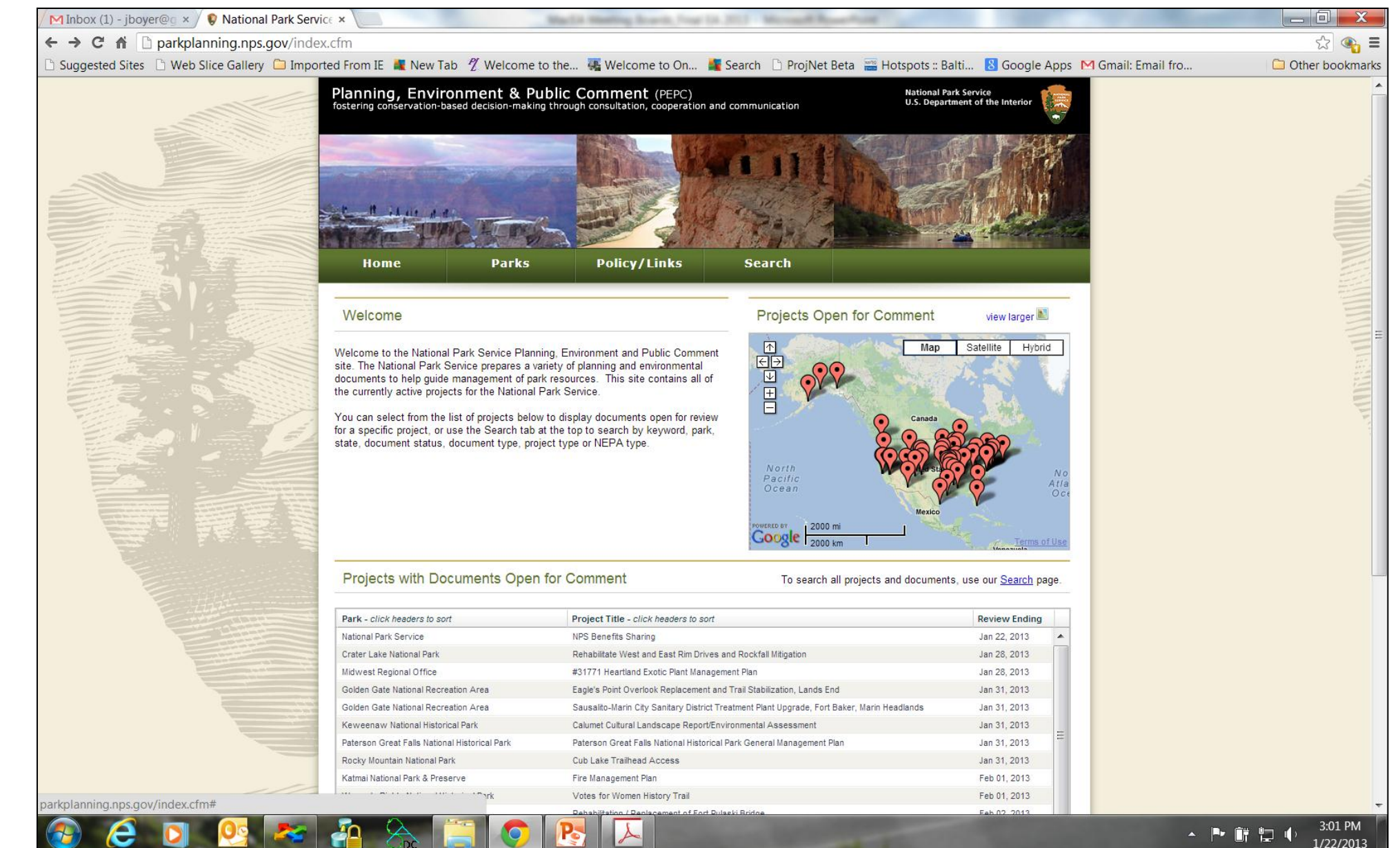






# How to Comment

- The public is invited to comment on the proposed action and alternatives analyzed in the Environmental Assessment / Assessment of Effect.
- Comments or questions can be provided tonight on the comment form.
- You may access the document and submit comments electronically at the NPS's Planning, Environment, and Public Comment website:  
<http://parkplanning.nps.gov/MacArthurBikewayImprovements>
- Written comments may be mailed to:  
Superintendent  
George Washington Memorial Parkway,  
Turkey Run Park, McLean, VA 22101
- Mailed comments must be postmarked by **February 8, 2013** to receive consideration.



PEPC Website





# MacArthur Blvd. Bikeway Improvements Project

- The planned typical section on MacArthur Boulevard includes the following:
  - Ten-foot travel lane
  - Three-foot shoulder for experienced cyclists
  - Five feet of green space
  - Eight-foot off-road shared-use path for recreational cyclists and pedestrians.

