

## LANDSCAPING

Landscaping can be both natural or deliberate. Landscaping complements and enhances the value and location of the built environment. We have already seen that the natural landscape is highly valued. It is the treatment of the landscape, both the natural and the deliberate relationship between the structures that shall be evaluated in this section. The two highest images in this category portray the landscape treatment of the side yards and the distance between the sides of the buildings.

The resultant image values are the calculated values as a result to the participants response to “ How appropriate is the Image you are seeing, now and in the future, for Landscaping on Fire Island. The images in this sub-set are some of the most controversial images in the study due to the the high standard deviation values.



This is the highest-rated image in the landscaping category. The wide side yard, between these two low structures, is a naturalized “beach tolerant” landscape treatment.



This side yard, like the previous image, is also naturalized with beach tolerant indigenous vegetation.



This yard, includes a combination of wood piles, stone and shrubs.

## Landscaping

Driftwood "fence" as sculptural element

**+4 (6)**



Stacked drift wood mixed with low vegetation. This image is positive but due to the standard deviation of (6) this image is considered controversial.

## Landscaping

Fish pond as landscaping element

**+3 (5)**



This yard, complete with a water feature, stone and low vegetation is surrounded with a light metal fence and wood posts. This image is positive but controversial because of the (5) standard deviation.

## Landscaping

Natural materials, "beach-tolerant" plants, driftwood, low fencing

**+3 (6)**



This yard edged with a combination of vertical and horizontal wood elements along with low vegetation and grasses. This is a controversial image. due to the high standard deviation.

## Landscaping

Grass yard, landscaped planting beds

**+2 (6)**



Low mowed grass, shrubs and trees in planting boxes running along a wooden boardwalk. This image is still positive but controversial due to the high standard deviation of (6).

## Landscaping

"Kitsch" as landscaping elements

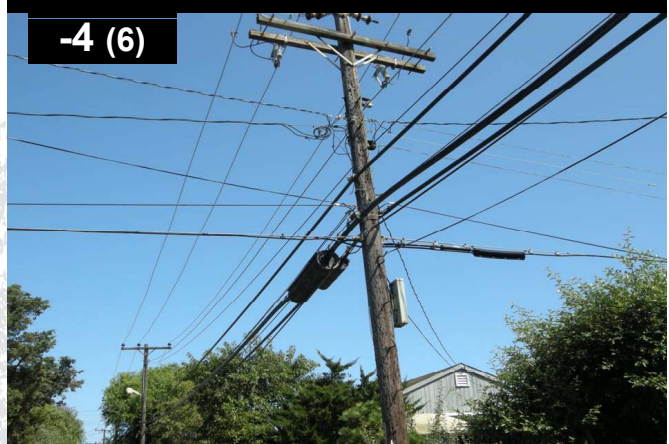
-1 (7)



## Landscaping

Overhead utility poles and wires

-4 (6)



These two images are negative and are considered controversial due to the high value of standard deviation.

### 40 Use of indigenous and/or "beach-friendly" vegetation in landscaping

1	Not important	5.4%	24
2	Somewhat important	11.6%	51
3	Moderately important	23.1%	102
4	Very important	31.7%	140
5	Extremely important	26.5%	117
		98.4%	434

Use of Indigenous/ Beach Friendly Vegetation

