



# Meeting Agenda

12:00 Open House

12:30 Superintendent's Welcome

12:40 Project Presentation/Overview

1:00 Discussion

2:00 Safe Trip Home

National Park Service  
U.S. Department of the Interior  
Bandelier National Monument



# Transportation Plan/Environmental Assessment: Public Meeting

September 2012



Photo: NPS



# Meeting Purpose

- To discuss your ideas about how the Bandelier's transportation system could be structured to serve you, while minimizing impacts to the very resources you come to enjoy.



Photo: NPS

## Meeting Purpose (cont.)

- What are your observations about the Bandelier's transportation conditions?
- How do these conditions affect your use & experience of the Monument?
- What ideas do you have for improving transportation conditions in Bandelier?



# Presentation Outline

- **Describe** the process for developing the Plan/EA
- **Summarize** the draft Purpose, Need, & Objectives
- **Review** known transportation issues and opportunities
- **Identify** existing Bandelier resources (historical, cultural, natural, wildlife, etc.)
- **Discuss** your ideas, questions, and concerns
- **Tell** us if we've missed anything or gotten it wrong

# PLANNING PROCESS OVERVIEW



Photo: NPS



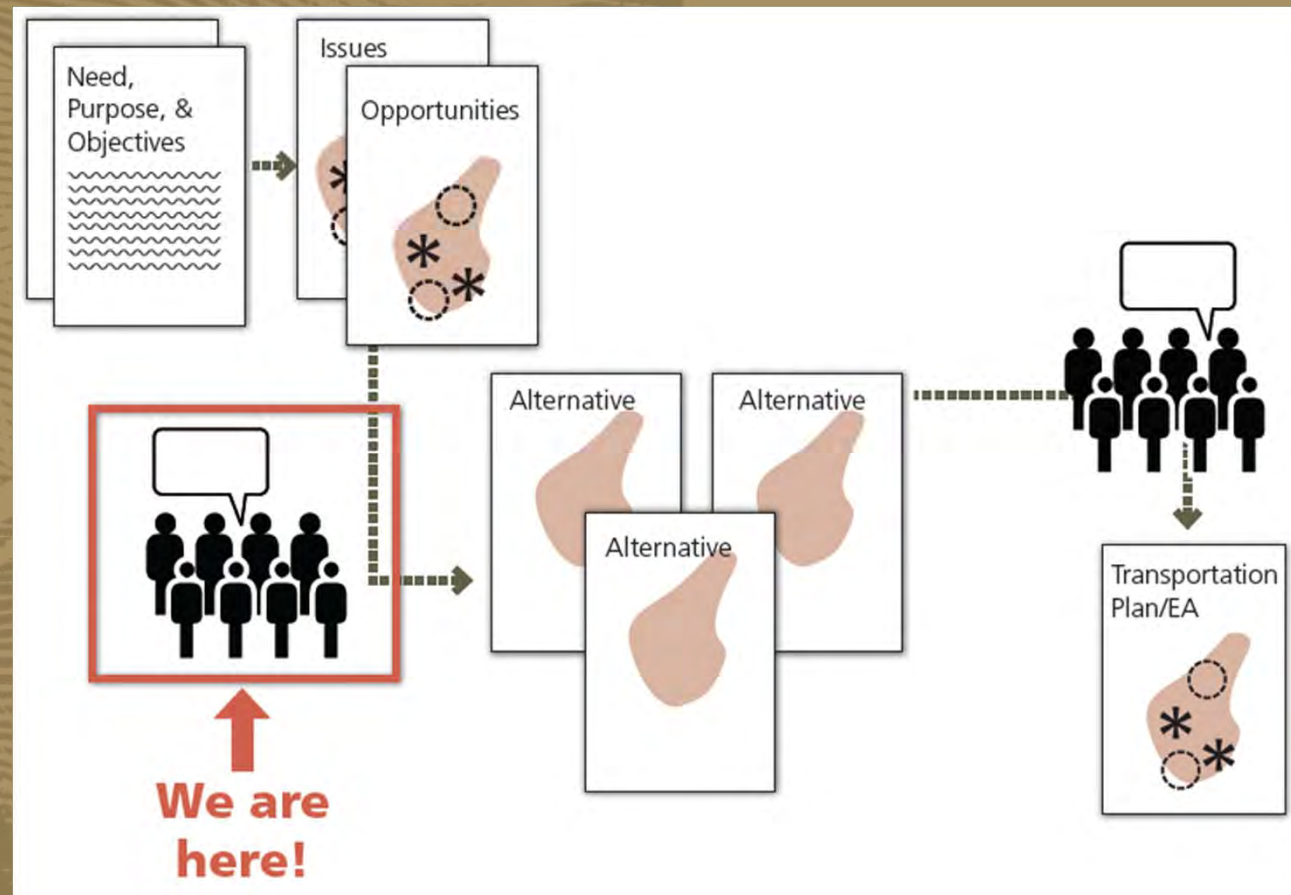
# National Environmental Policy Act of 1969 (NEPA)

- Outlines the environmental planning process that the NPS must follow to ensure informed decision-making.
- Actions requiring NEPA planning
  - Any federal action or federal decision being considered that would, if implemented, have an impact on the human environment.

*The human environment “shall be interpreted comprehensively to include the **natural and physical environment and the relationship of people with that environment.**”*

# Overview of the Planning Process

- To comply with NEPA, this Plan/EA is being developed to assess potential impacts on natural, cultural, and social resources.





## Need for the Plan (Draft Statement)

Traffic and parking congestion have been an ongoing issue at Bandelier National Monument since the 1970s. During peak periods, visitation levels have often exceeded existing parking capacities resulting in overcrowded parking lots and lines of cars waiting to enter the Monument. Traffic and parking congestion negatively affects Bandelier's resources, such as air quality, soundscapes, wildlife, and water quality, and causes impacts to visitor safety and the overall quality of visitors' experiences.

# Purpose of the Plan (Draft Statement)

To develop solutions to transportation issues at Bandelier National Monument that are *resource-sensitive, environmentally sustainable, cost effective, and improve visitor enjoyment.*



Photo: NPS



# Objectives of the Plan (Draft)

- Protect natural and cultural resources within the project area.
- Ensure visitor access and enhance opportunities for visitor enjoyment.
- Return Frijoles Canyon to a more tranquil setting.
- Reduce transportation-related impacts, such as air and noise pollution.

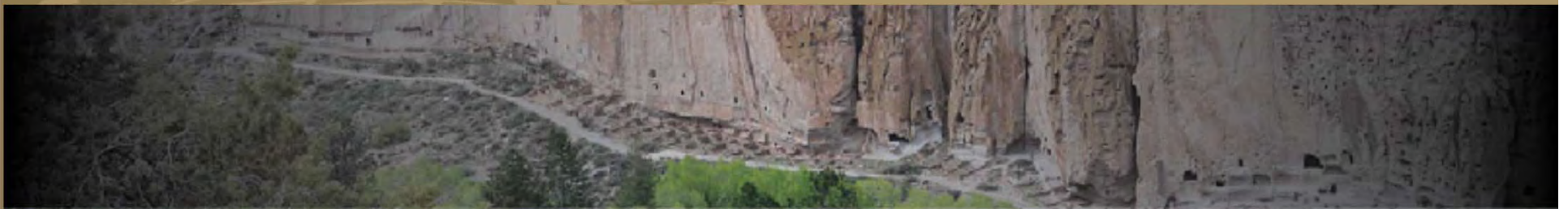
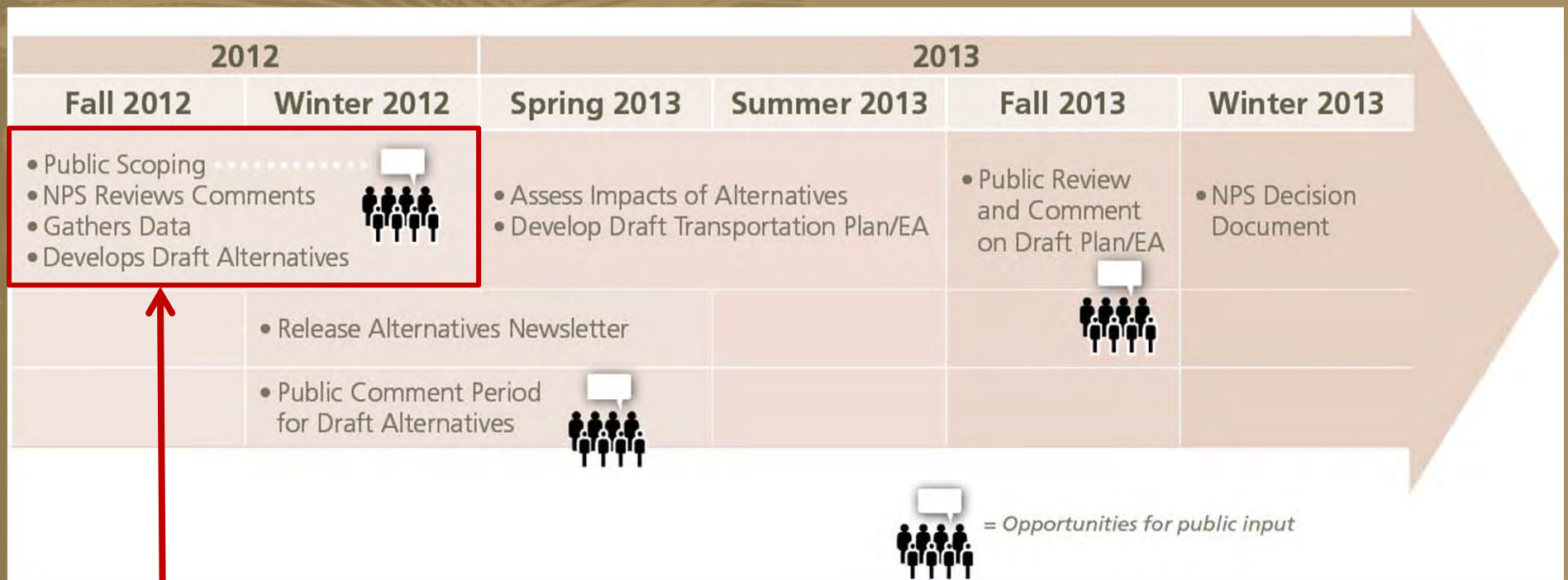


Photo: NPS

# Project Schedule and Opportunities for Public Involvement



We are  
here



# TRANSPORTATION ISSUES & OPPORTUNITIES



Photo: NPS



# Transportation Issues through 2010

During peak periods, parking demand exceeds supply in Frijoles Canyon...





# Transportation Issues through 2010

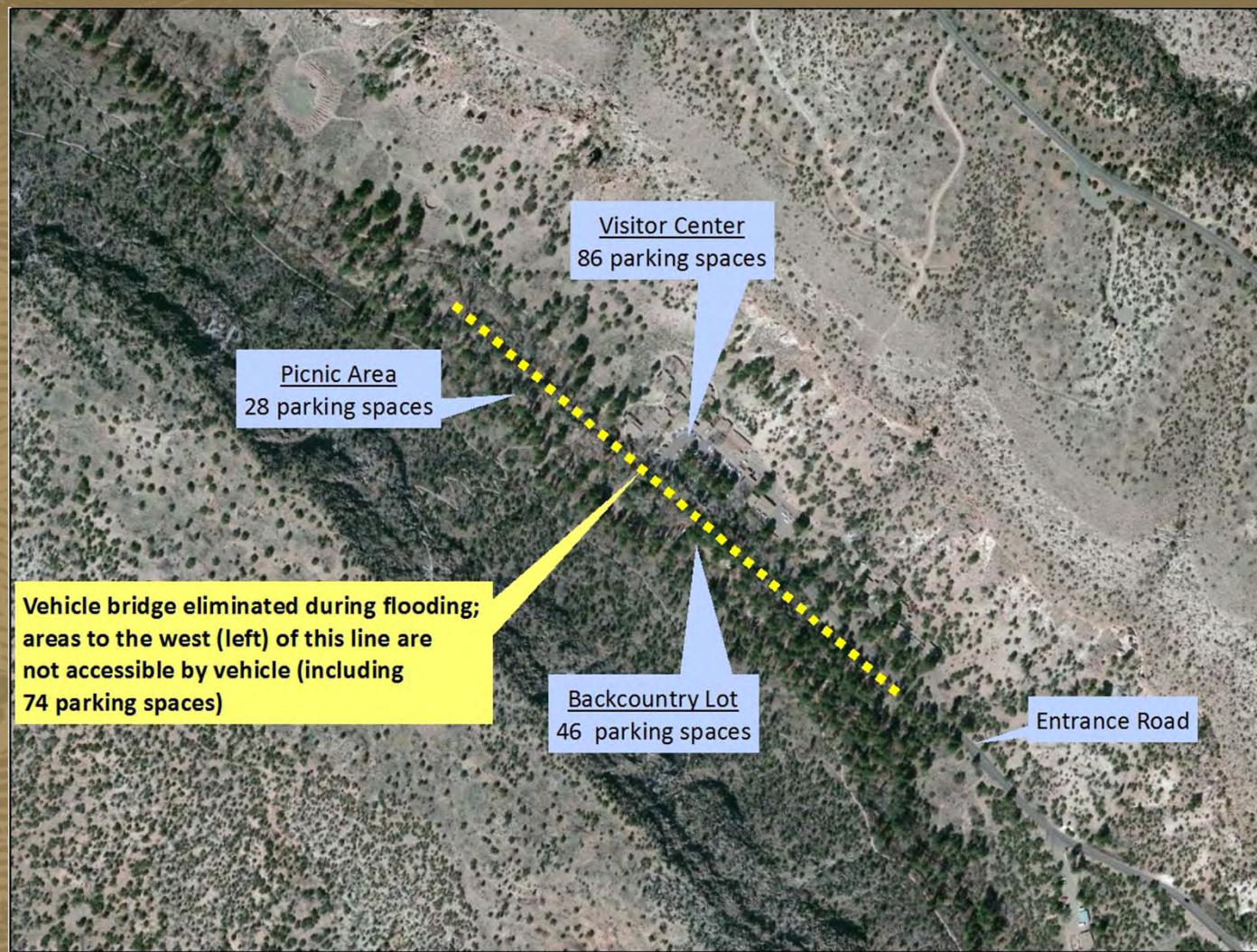
During peak periods, parking demand exceeds supply in Frijoles Canyon...

...and visitors must wait in traffic to enter the Monument.





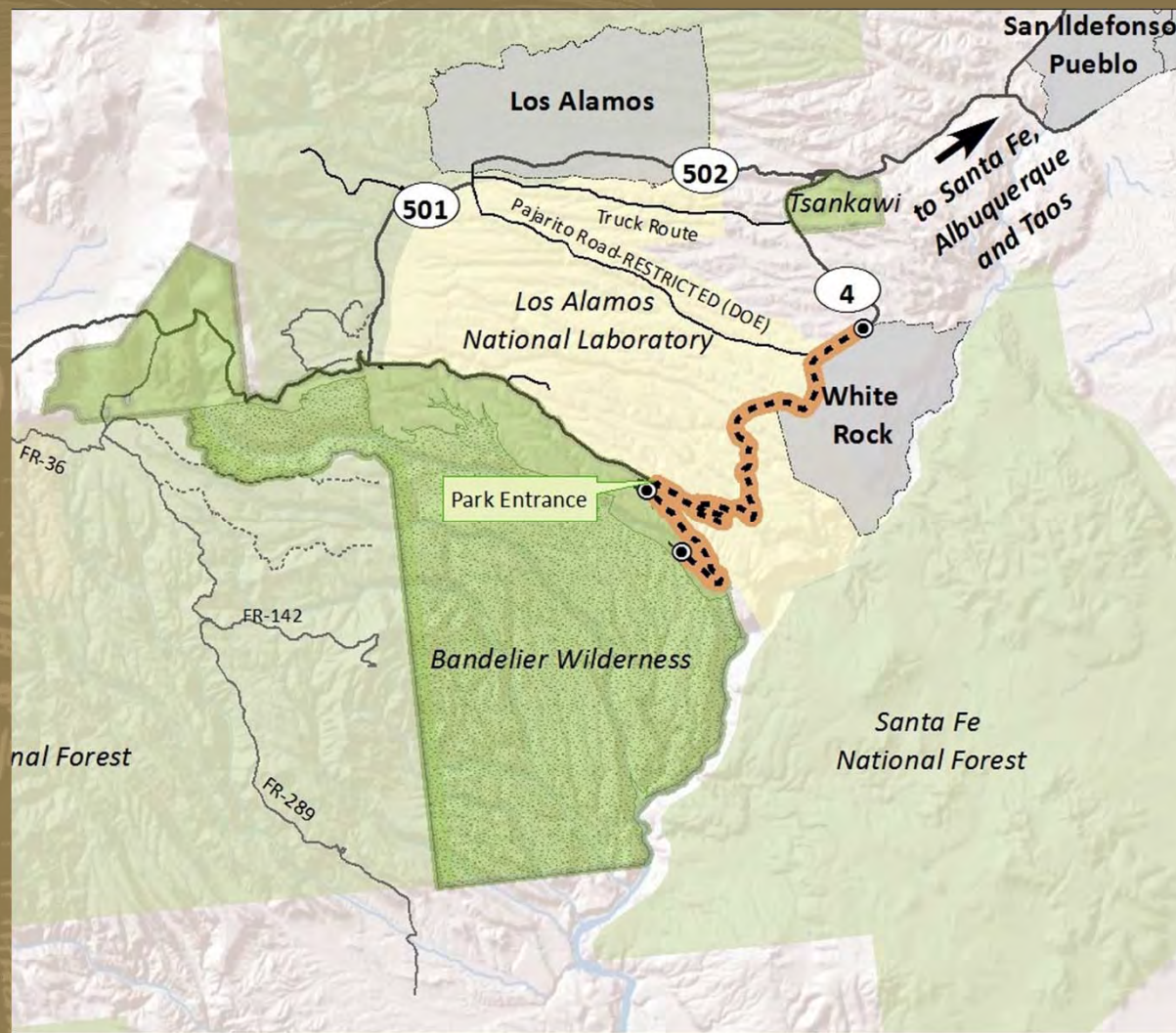
# 2011 Las Conchas Wildfire, Frijoles Canyon bridge removal



- ~50% loss of parking capacity in Frijoles Canyon



# Emergency Shuttle Service 2012-2014





# Future of Transportation in Bandelier?

- Shuttle system is temporary (2012-2014)
- Long-term solutions to parking and traffic congestion are needed
- NPS will consider transit and non-transit alternatives



Photos: WTI, ACT





# BANDELIER RESOURCES

Photo: NPS



# Impact Topics to be Considered

## ■ Natural Resources

- Vegetation
- Wildlife/Wildlife Habitat
- Water Resources
- Floodplains
- Air Quality
- Soundscapes



## ■ Cultural Resources

- Archeological Resources
- Ethnographic Resources
- Cultural Landscapes
- Historic Structures





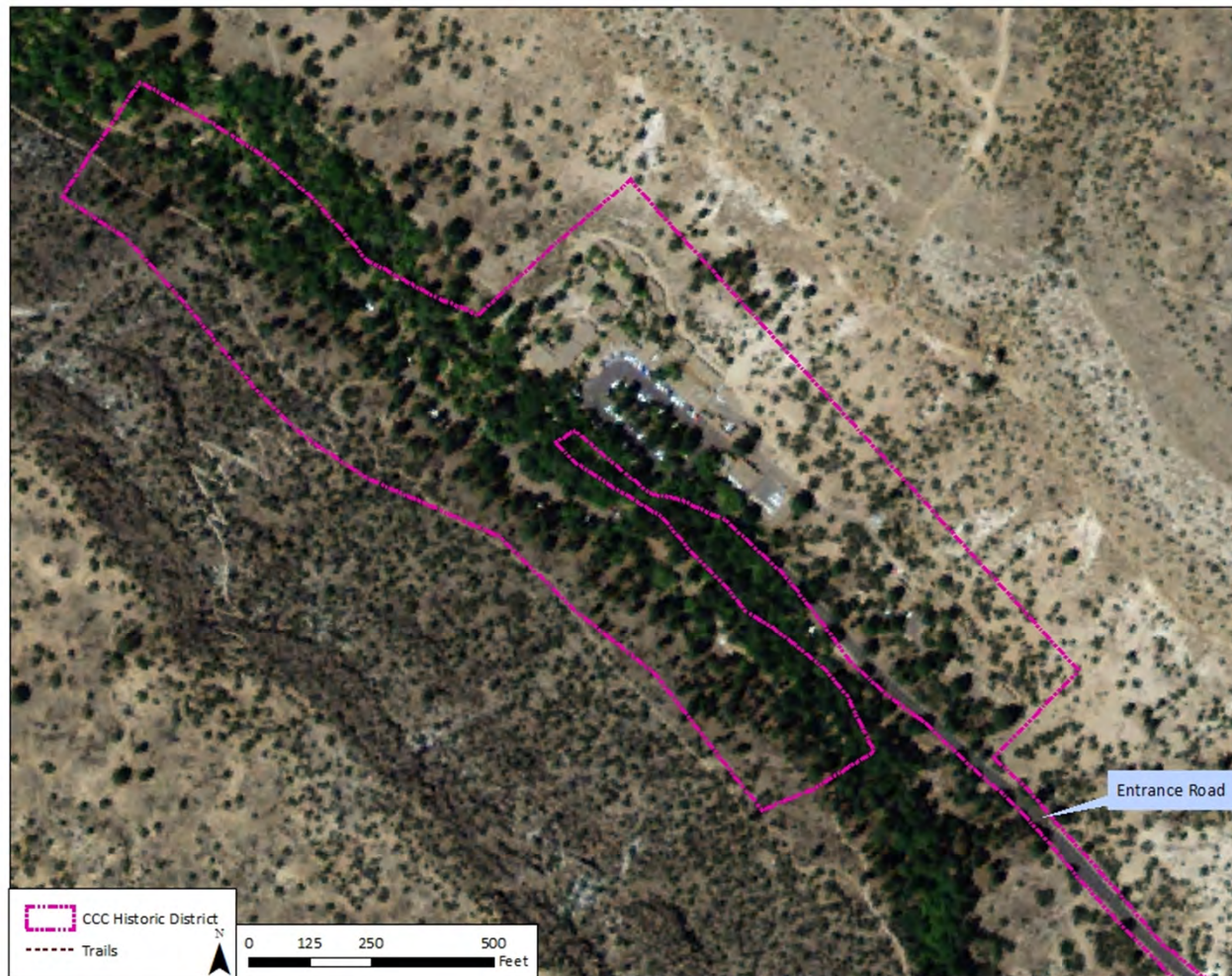
# Impact Topics to be Considered

- Socioeconomic Resources
- Access and Circulation
- Visitor Use
- Bandelier Operations





# Civilian Conservation Corps (CCC) Historic District



- *Bandelier Buildings and Frijoles Canyon Lodge*
- Built 1930s
- Does not include trails built by CCC
- Regional significance
- Includes Visitor Center and Entrance Road



# Talus House and Tyuonyi Village





# Vegetation of Bandelier





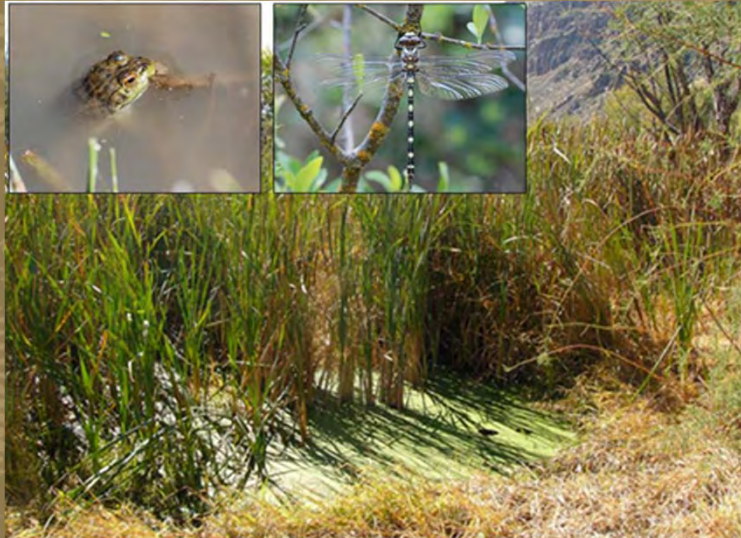


# Wildlife of Bandelier





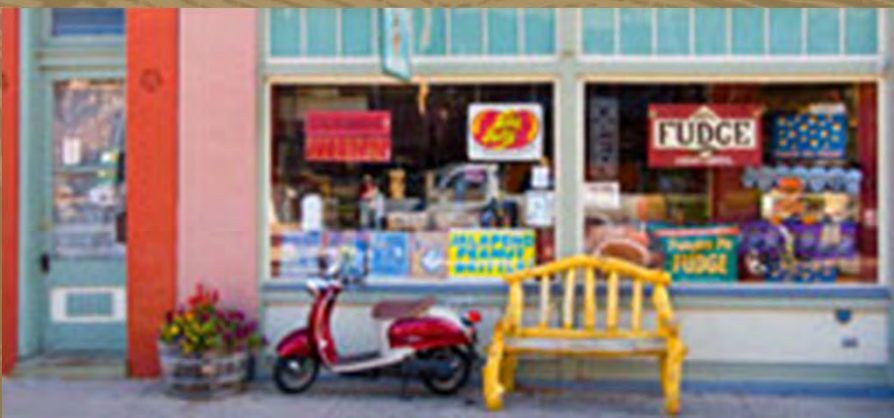
# Water Resources





# Socioeconomic Resources

- Bandelier Trading Company
  - Gift Shop
  - Snack Bar
- White Rock
- Los Alamos







# Access and Circulation





# Discussion

- What are your observations about the Bandelier's transportation conditions?
- How do these conditions affect your use & experience of the Monument?
- What ideas do you have for improving transportation conditions in Bandelier?