

A watercolor illustration of the Washington Monument and its surroundings. The monument is a tall, white, obelisk-like structure in the center. In the foreground, there are green lawns, trees, and a blue river. In the background, there are rolling hills and a city skyline. The sky is light blue with soft clouds. The overall style is artistic and painterly.

SECTION 106 MEETING #3

Washington Monument Visitor Security Screening

DECEMBER 13, 2011

CONSULTANT TEAM

Beyer Blinder Belle Architects & Planners, LLP

The Louis Berger Group, Inc.


Robinson & Associates, Inc.


Mueser Rutledge Consulting Engineers

Robert Silman Associates



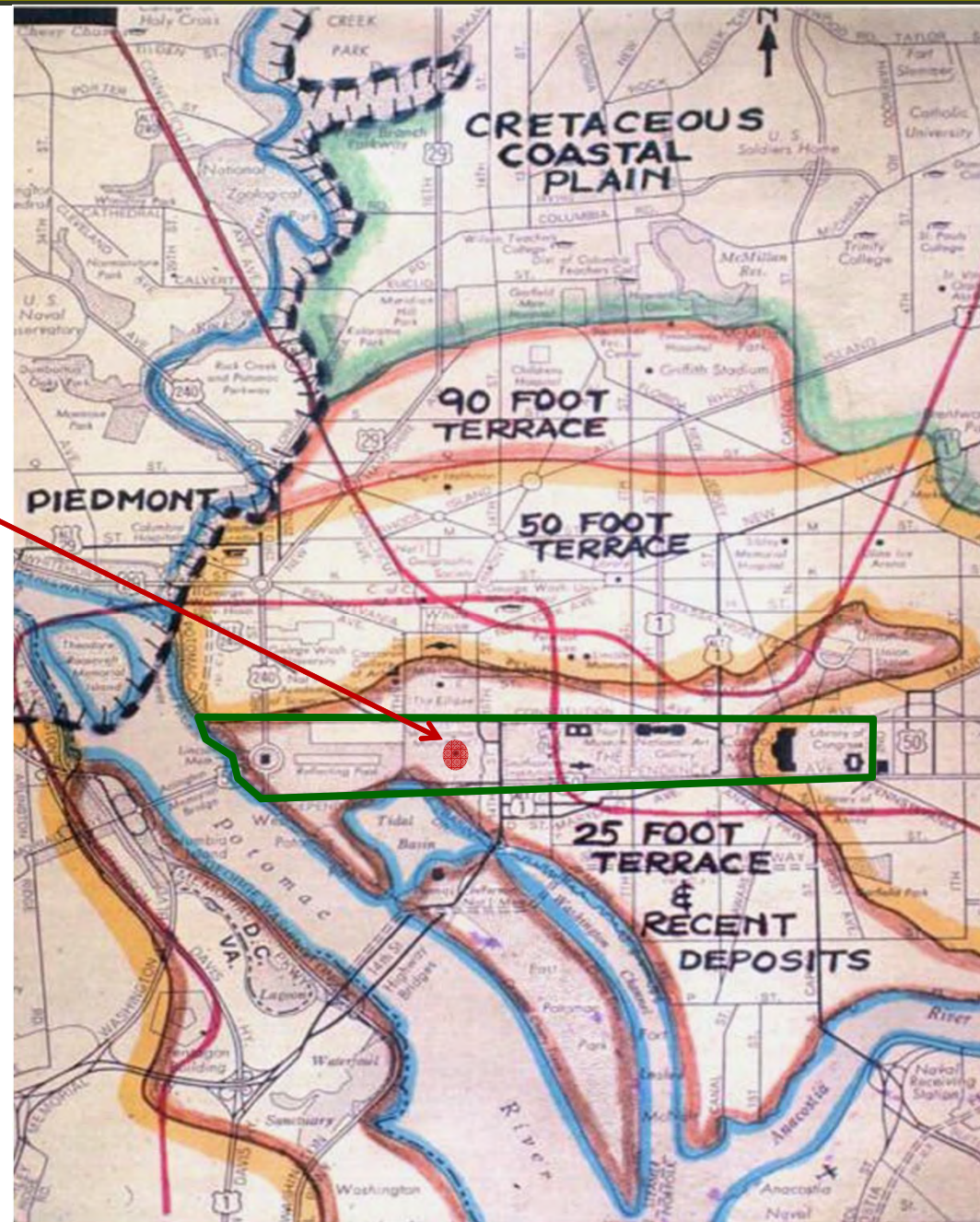
U.S. Department of the Interior
National Park Service

- 
- The Washington Monument is a tall, white, obelisk-shaped structure that dominates the left side of the image. It is set against a clear blue sky with some light clouds. The base of the monument is surrounded by a green lawn and a line of trees. In the background, a small airplane can be seen flying in the sky.
1. Summary of Geotechnical Findings
 2. Significance and contributing features of the Washington Monument
 3. Presentation of Alternatives
 4. Viewshed Analysis

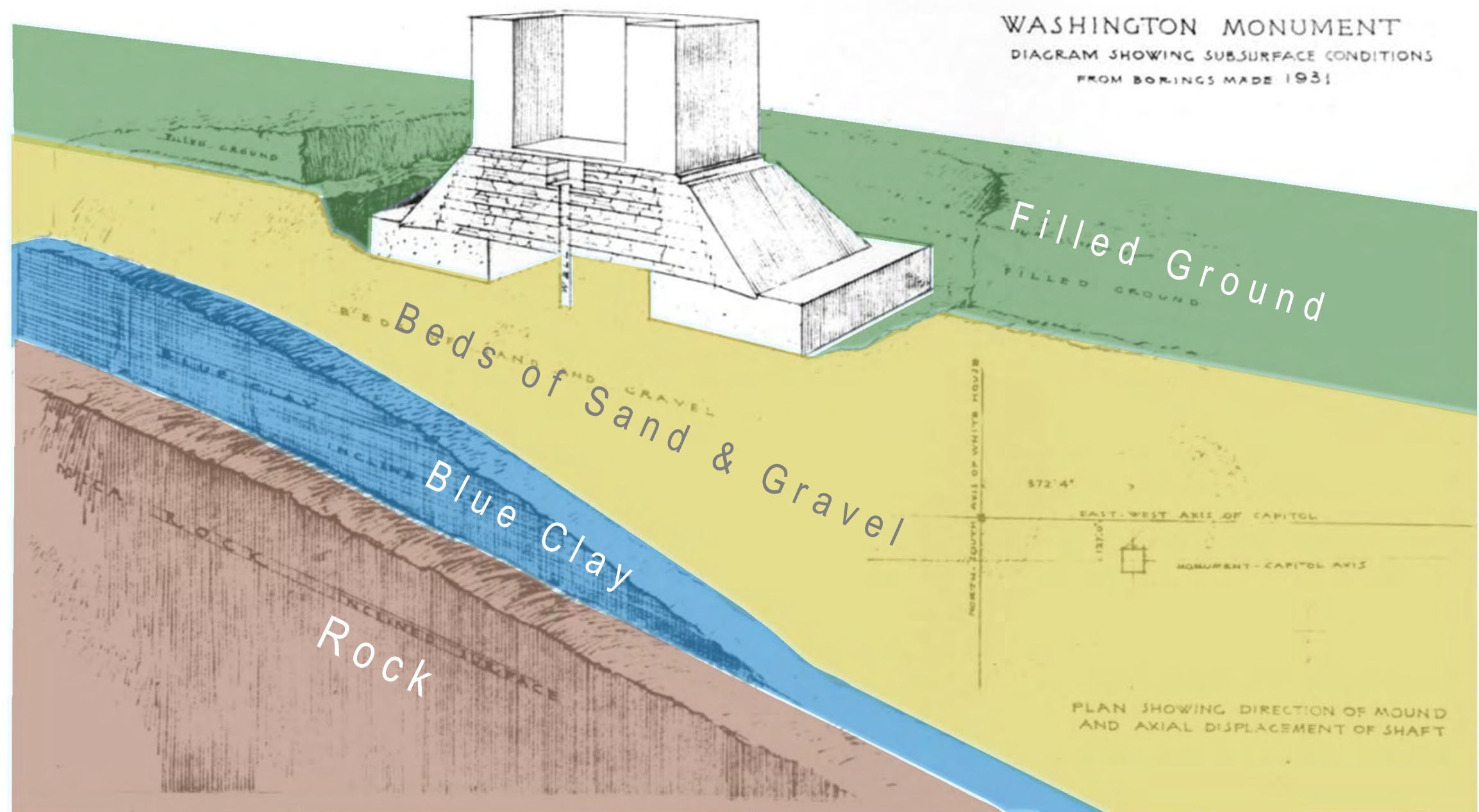
- 
- The Washington Monument is a tall, white, obelisk-shaped structure that dominates the left side of the image. It is set against a clear blue sky with some light clouds. The base of the monument is surrounded by a green lawn and a line of trees. In the background, a small airplane can be seen flying in the sky.
1. Summary of Geotechnical Findings
 - Geoarcheological Report
 - Geotechnical Summary
 - Seismic Study Update

Limits of Pleistocene Terraces

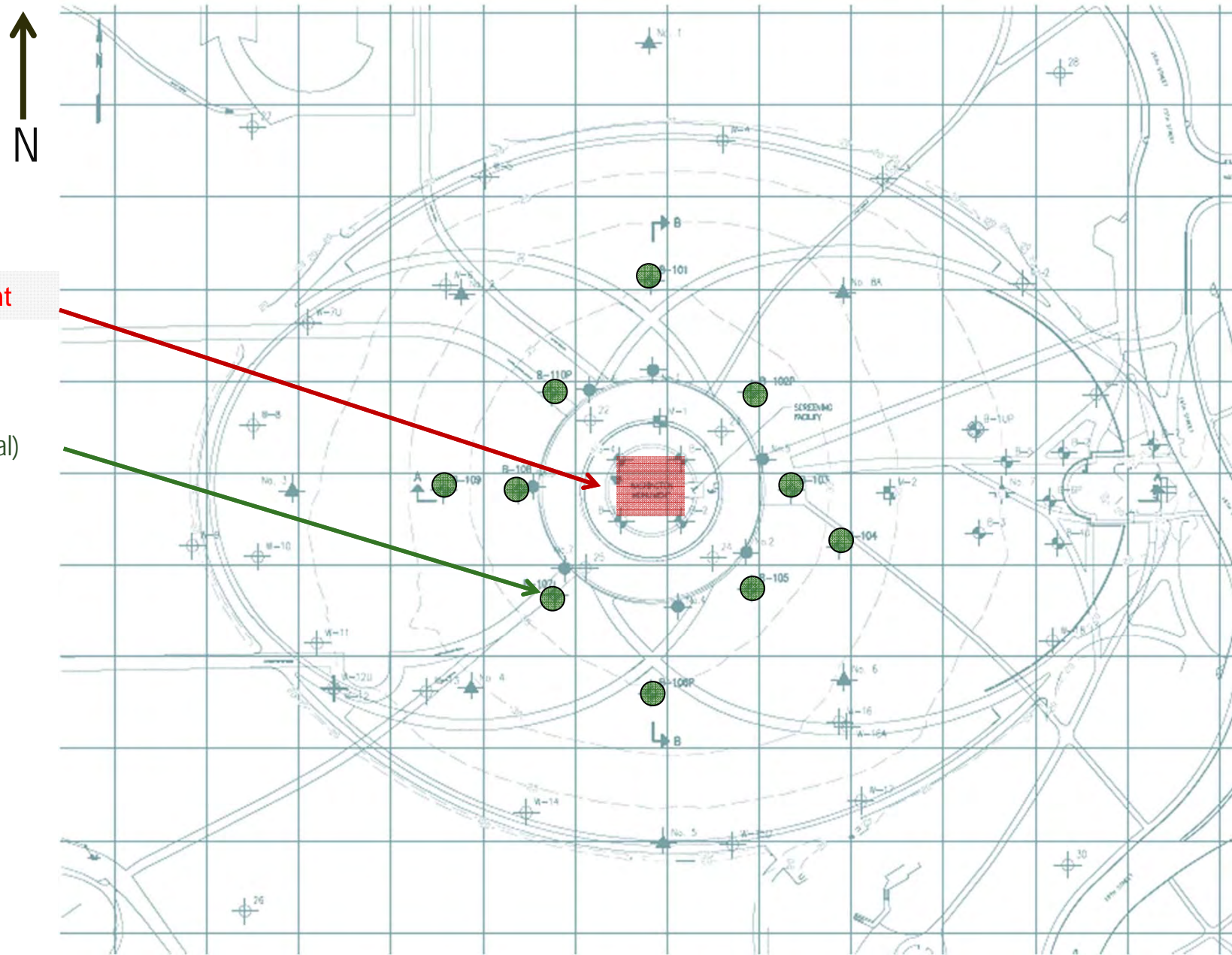
● Washington Monument



General Subsurface Profile



Boring Location Plan

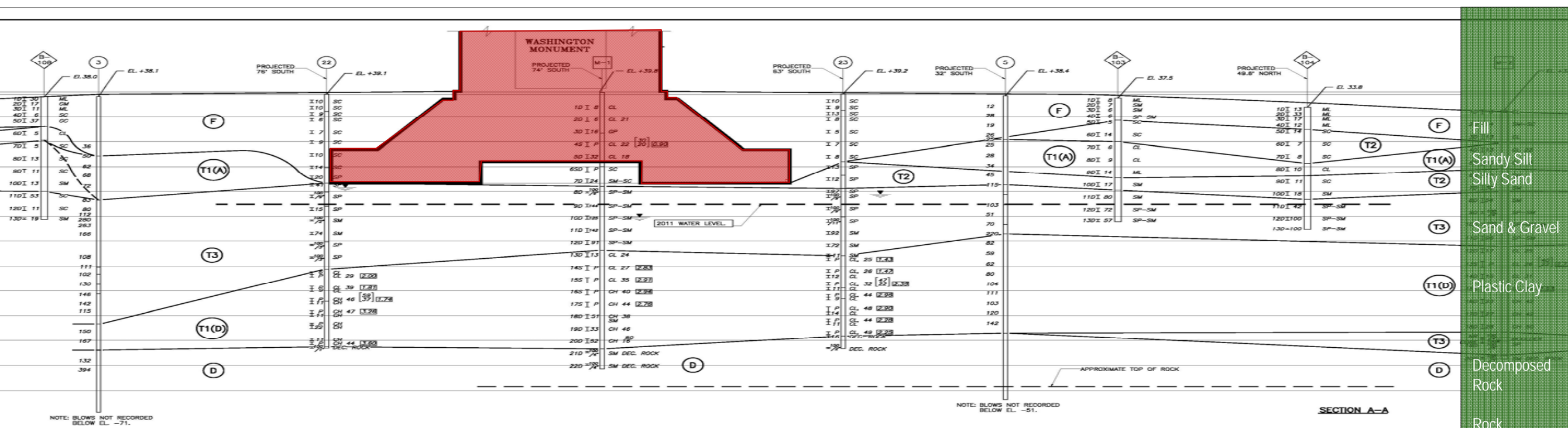


● Washington Monument

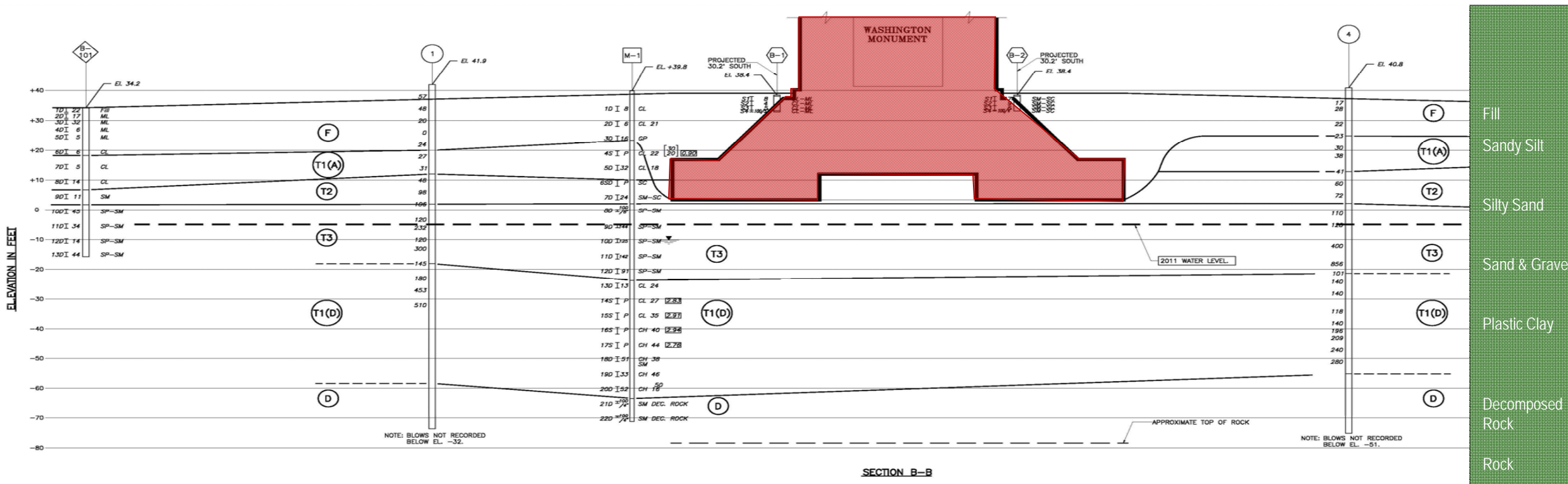
● Boring Made in 2011 (Typical)



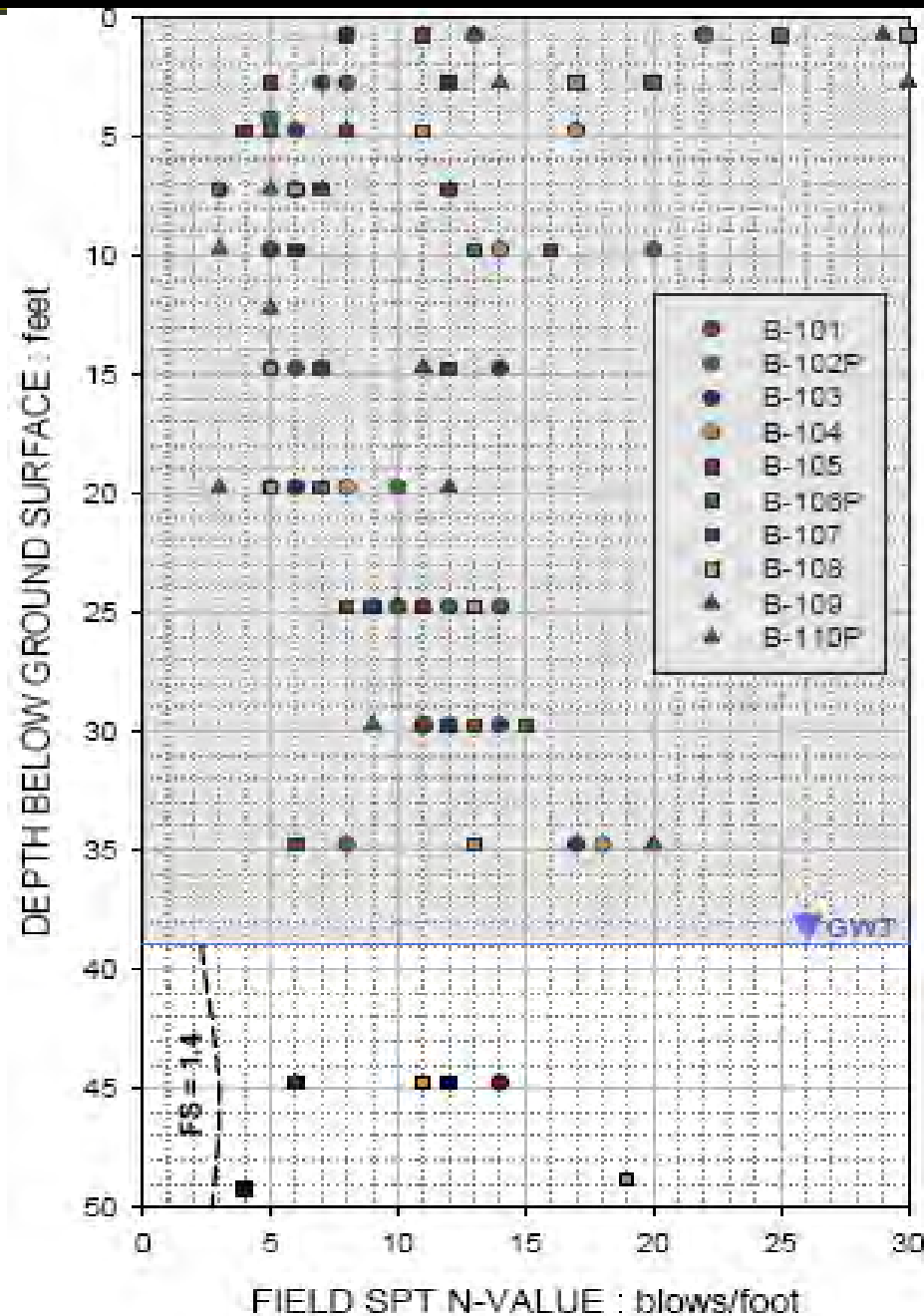
Section A-A



Section B-B



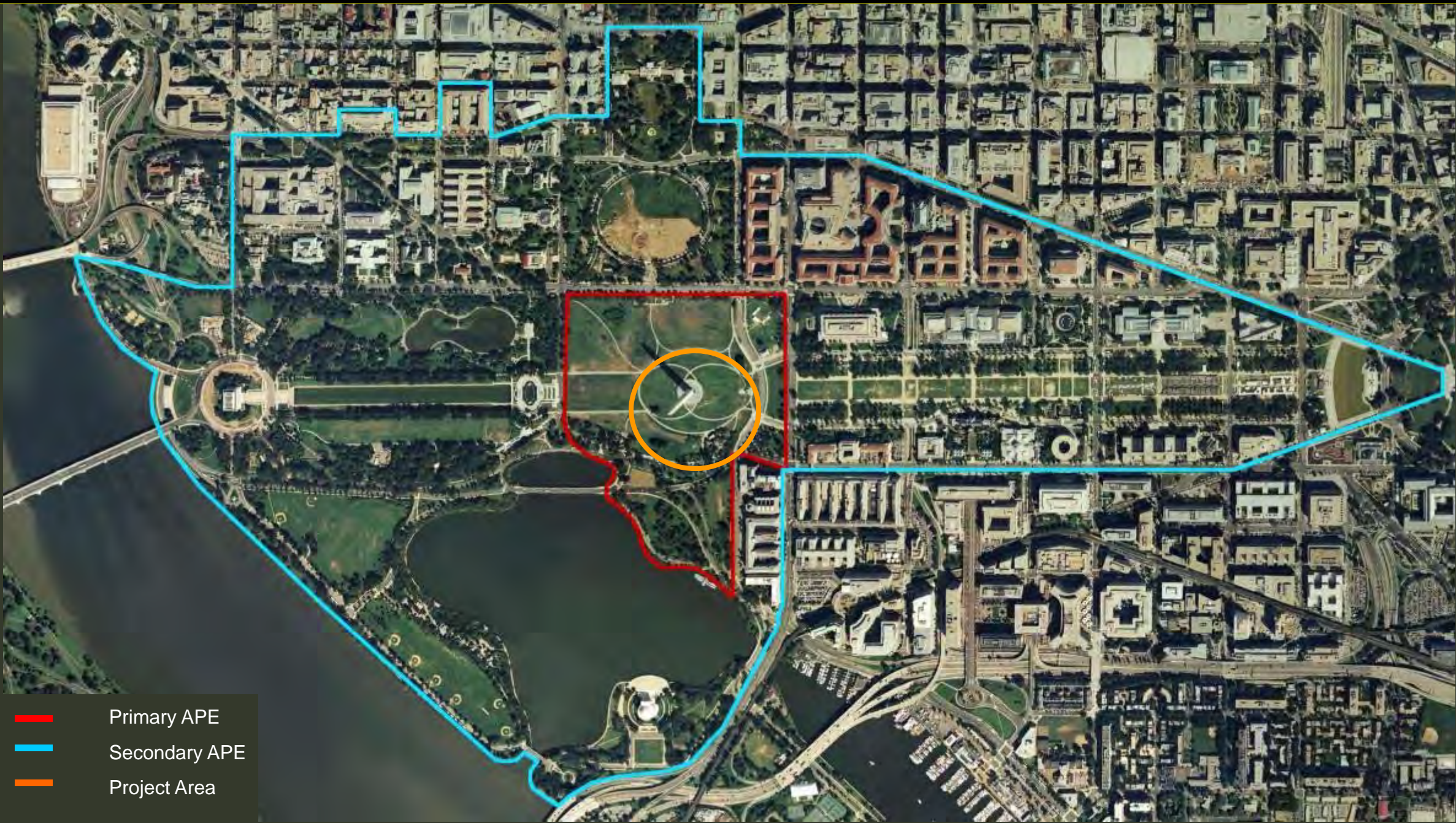
Site-Specific Seismic Liquefaction Screening Diagram



A tall, white, obelisk-shaped monument stands prominently on the left side of the image. The monument is set against a clear blue sky with some light, wispy clouds. At the base of the monument, there is a row of flags and some greenery. The foreground is a flat, grassy field. In the distance, a line of trees and some small structures are visible on the horizon.

2. Significance and contributing features of the Washington Monument

Area of Potential Effect



- Primary APE
- Secondary APE
- Project Area



Historic Resources within the APE

INDIVIDUALLY LISTED HISTORIC PROPERTIES



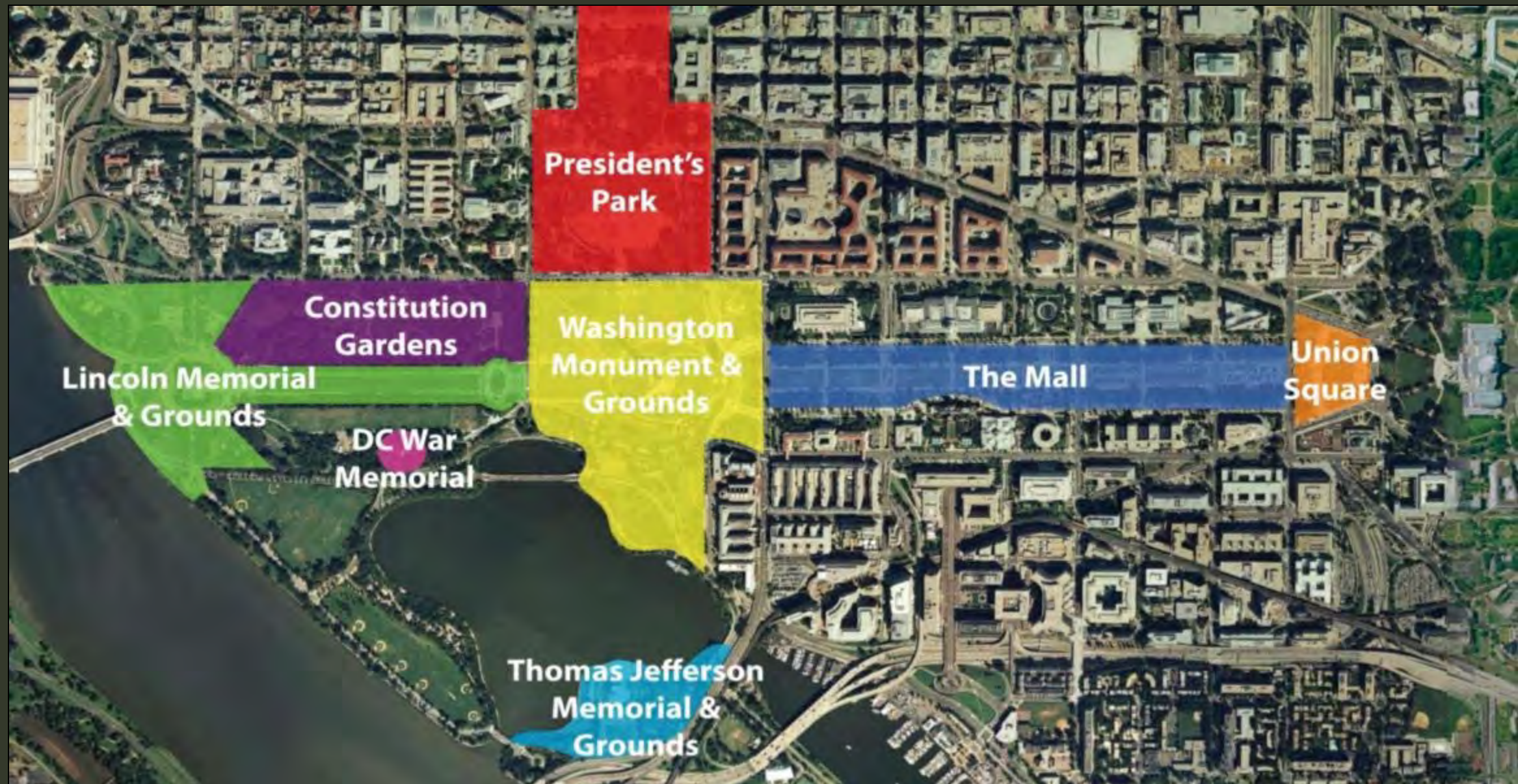
Historic Resources within the APE

NATIONAL REGISTER HISTORIC DISTRICTS



Historic Resources within the APE

CULTURAL LANDSCAPES



Historic Resources within the APE

PLAN OF THE CITY OF WASHINGTON CONTRIBUTING RESOURCES



Washington Monument Significance

National Register of Historic Places Nomination (1981)

Areas of Significance

- Architecture
- Engineering
- Landscape Architecture
- Other (commemoration)

Period of Significance

- 1848-1889

Statement of Significance

“The Washington Monument is significant as the nation’s foremost memorial to ... George Washington, as a major example of 19th century Egyptian Revival architecture, and as a notable example in structural engineering for its period.”



Washington Monument Significance

Washington Monument and Associated Structures: Historic Structures Report (HSR), June 2004

Satisfies National Register Criterion C within the area of architecture

- as an example of the early-nineteenth-century movement to commemorate prominent Americans
- as an embodiment of the principles of Egyptian Revival architecture
- as an engineering milestone
- for its association with Robert Mills and Thomas Lincoln Casey

Satisfies Criterion Consideration F (Commemorative Properties)

- for its design, age, tradition, and symbolic value

Period of Significance

- 1848-1914 (expanded to incorporate construction of marble wainscoting and terrazzo floors in first-floor lobby)



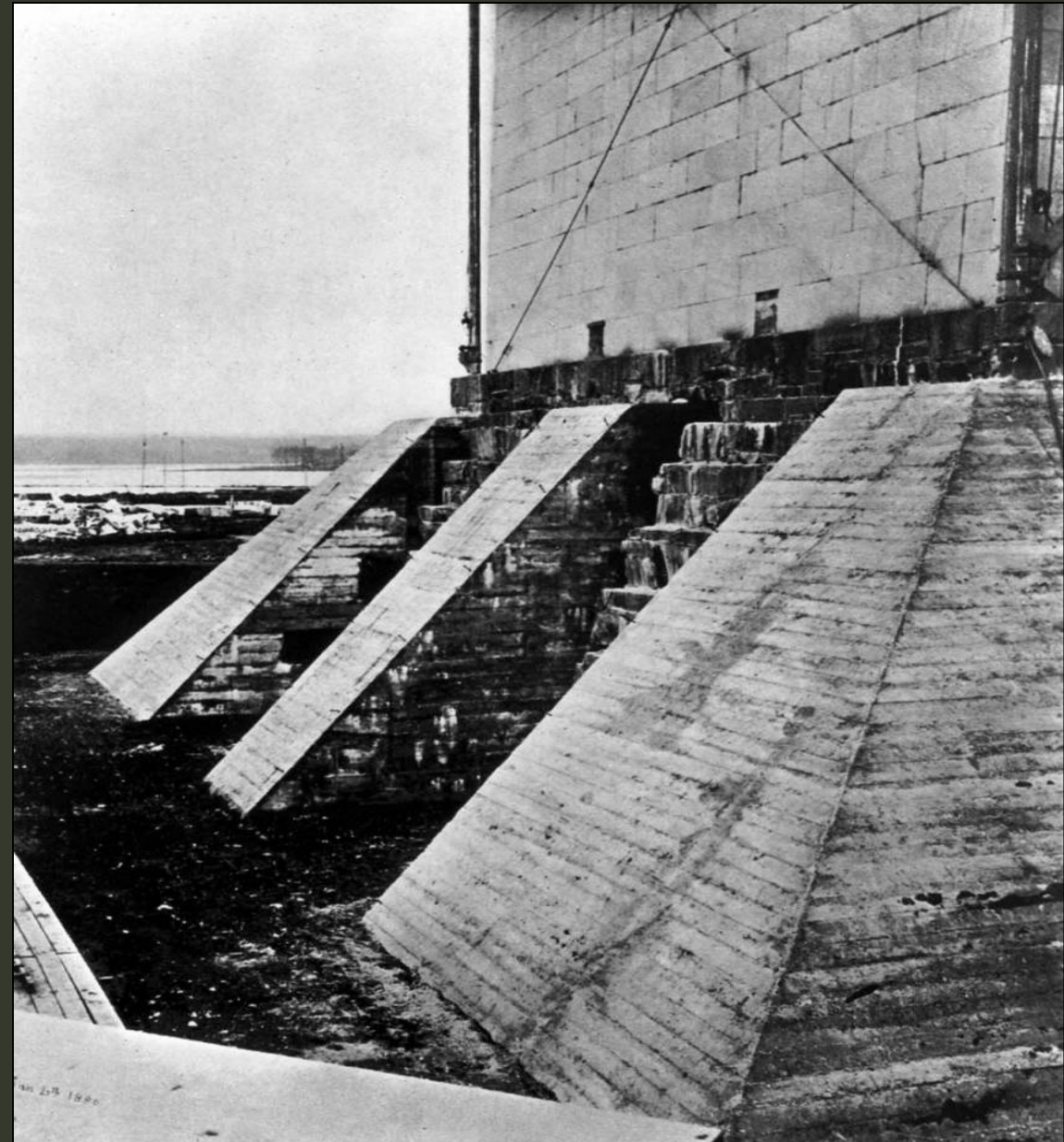
Existing Monument Features Dating to the Period of Significance

Washington Monument HSR

Exterior

- blue gneiss and concrete foundation
- first construction period exterior walls (1848-1858, to 150 Feet) – random bond, smooth dressed, coursed ashlar marble

1880



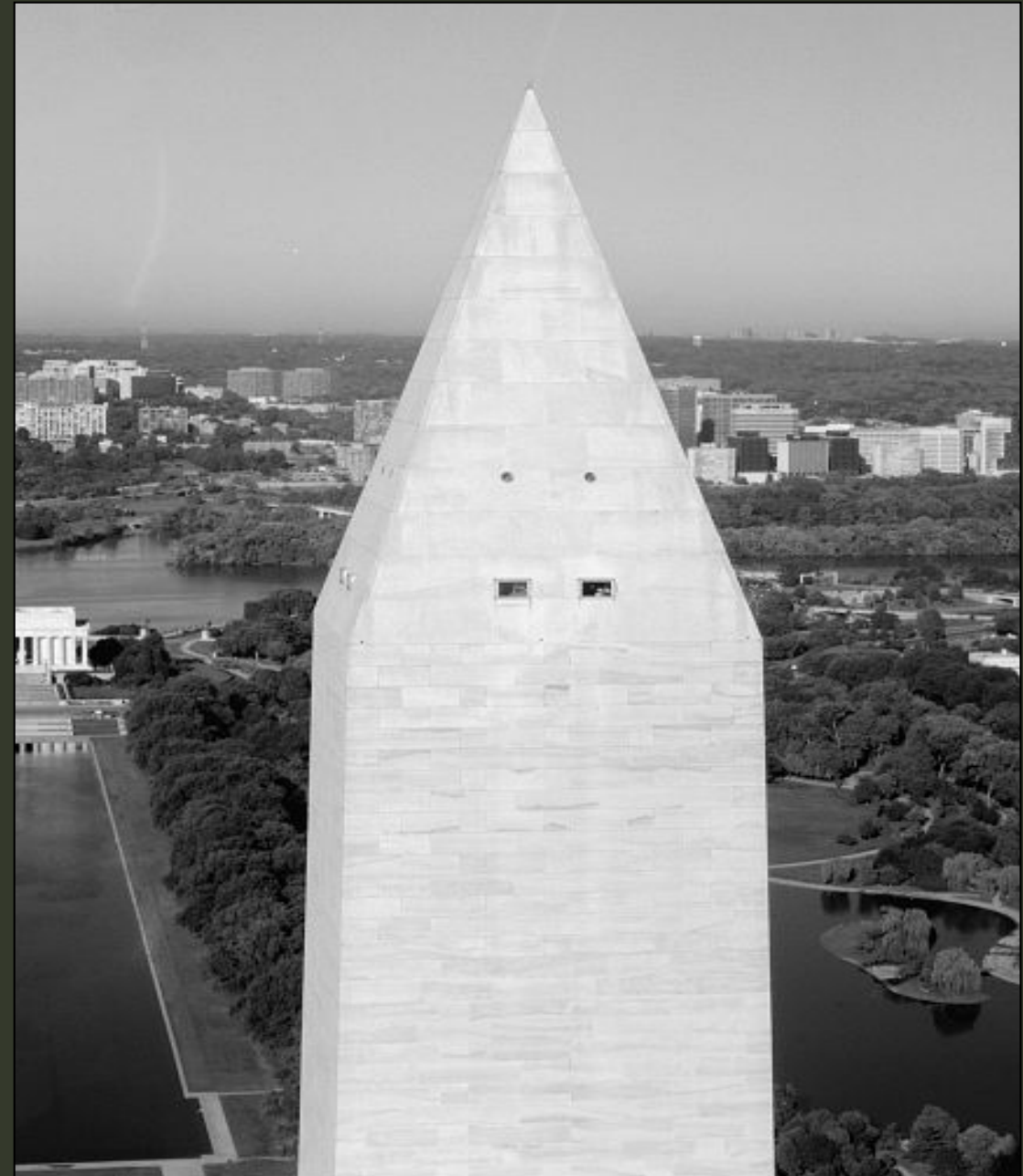
Existing Monument Features Dating to the Period of Significance

Washington Monument HSR

Exterior

- second construction period exterior walls (1880-1885, 150-foot level to top) – Flemish bond, solid dressed, coursed ashlar marble; marble double doors
- pyramidion – running bond, coursed ashlar marble; solid marble capstone with inscribed cast aluminum tip; two observation window openings on each face

1993

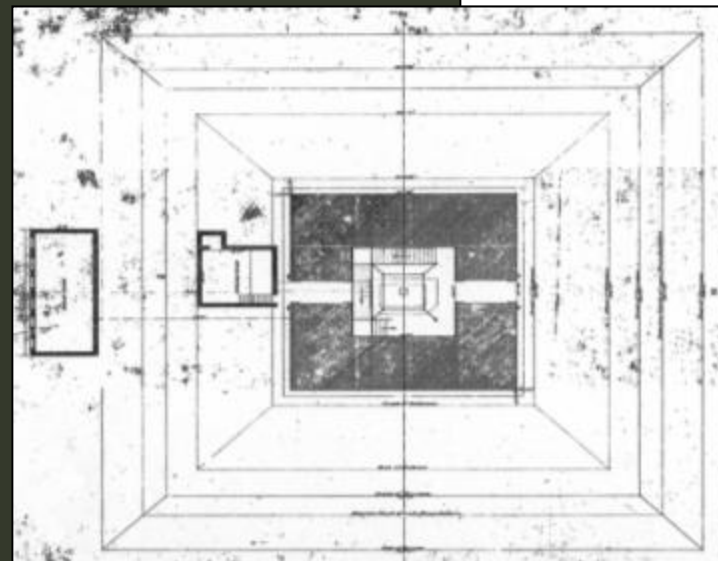
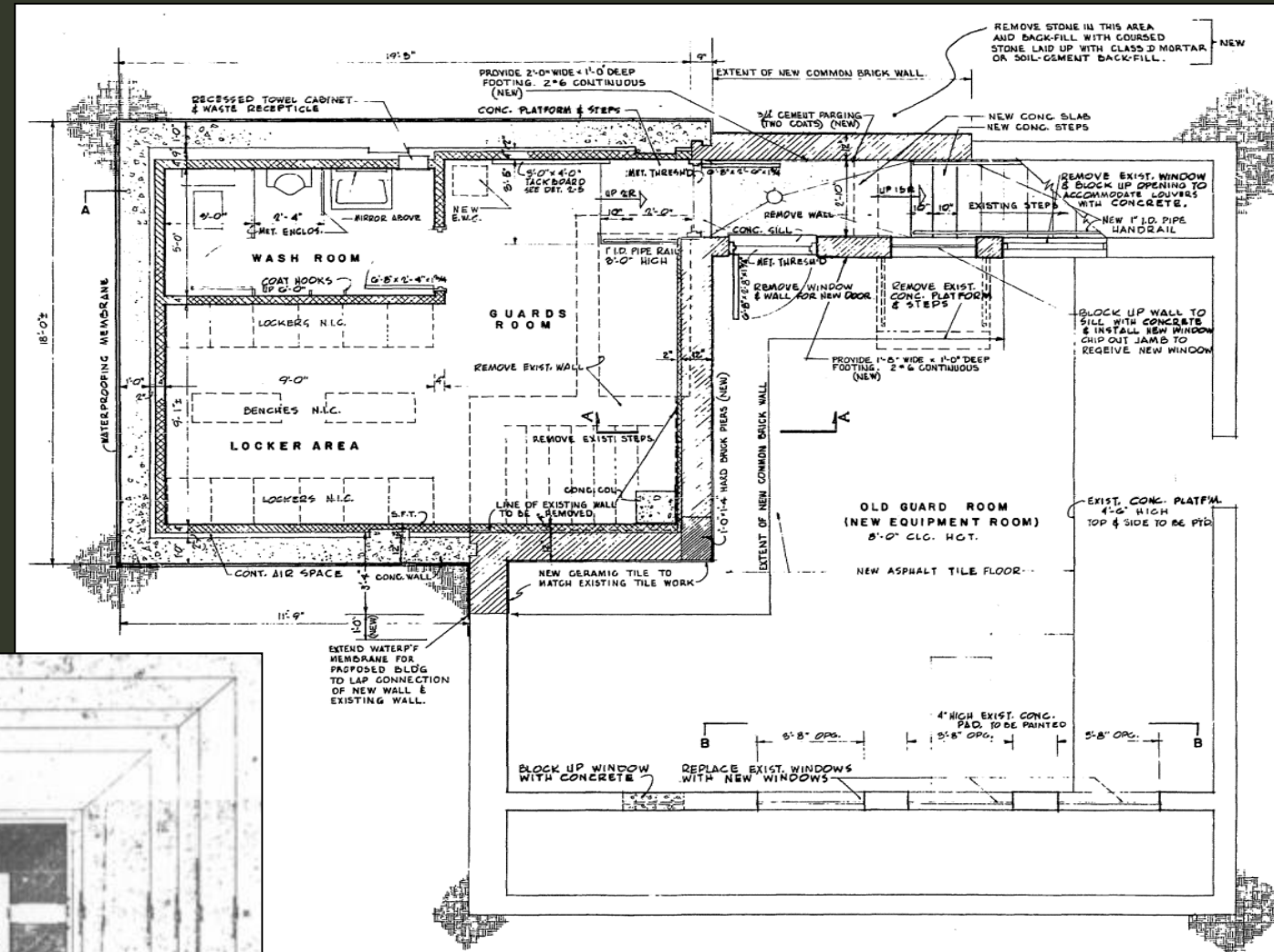


Existing Monument Features Dating to the Period of Significance

Washington Monument HSR

Below Grade

- below-grade mechanical area (Bunker 1) – located on site of the Monument's original engine room on a partial foundation of blue gneiss; expanded by half (600 to 900 square feet) in 1958; some historic finishes (foundations on east, brick walls) remain



1886

1958



Existing Monument Features Dating to the Period of Significance

Washington Monument HSR

Interior

Entry level

- east portal: marble walls and ceiling
- east elevator lobby: marble and gneiss east wall, including door surround and graffiti
- south corridor and west elevator lobby: two Phoenix columns; plaster walls, marble chair rail, wainscot, and base; terrazzo floor
- west chamber: marble walls and ceiling, terrazzo floor

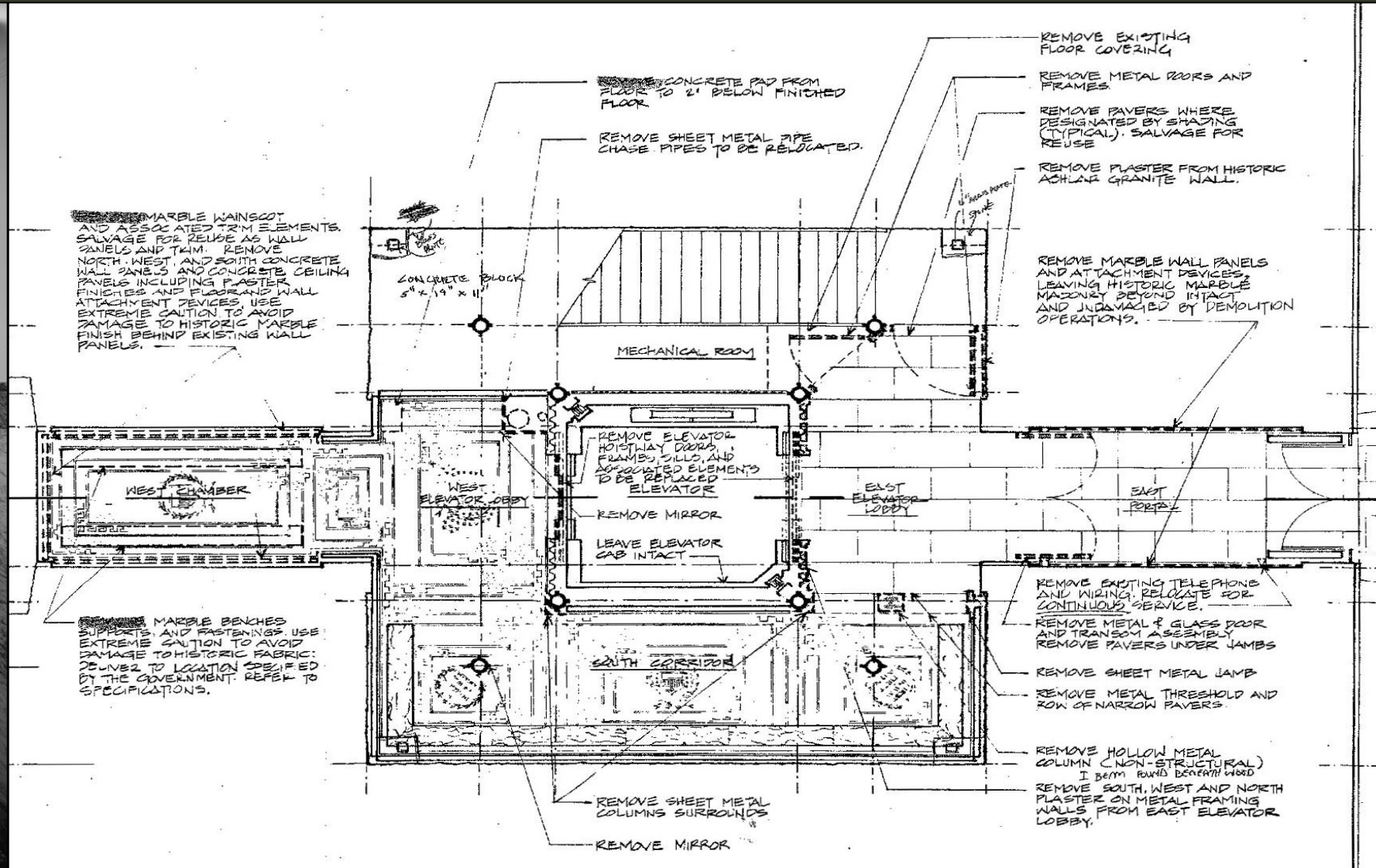


1993



Existing Monument Features Dating to the Period of Significance

Entry level floor plan



Existing Monument Features Dating to the Period of Significance

Washington Monument HSR

Interior

Iron Structure and Stair

- Two sets of Phoenix columns arranged in concentric squares

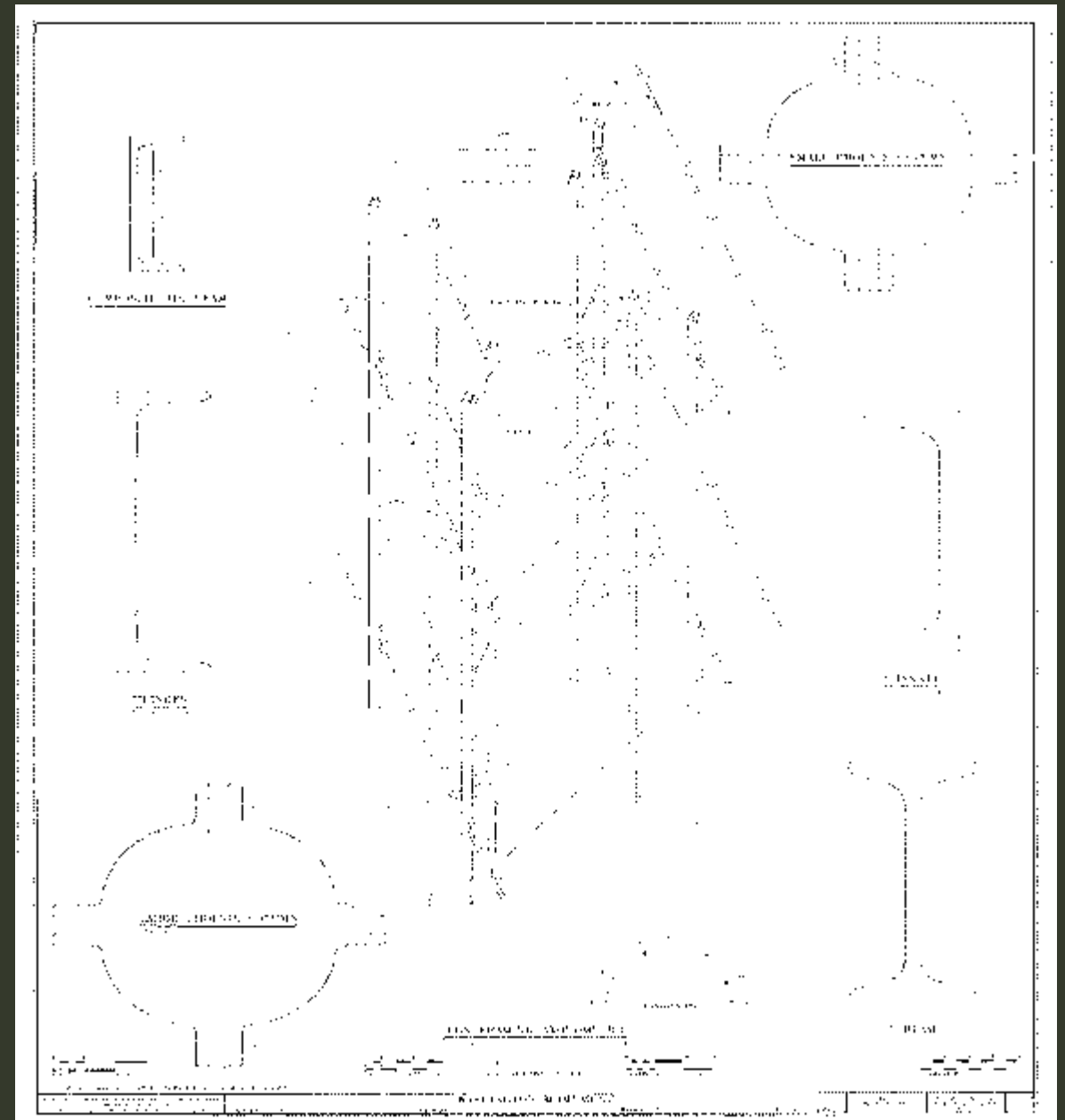
- Platforms and stairs

- Memorial stones

490- and 500-foot levels

- Marble walls and ribs

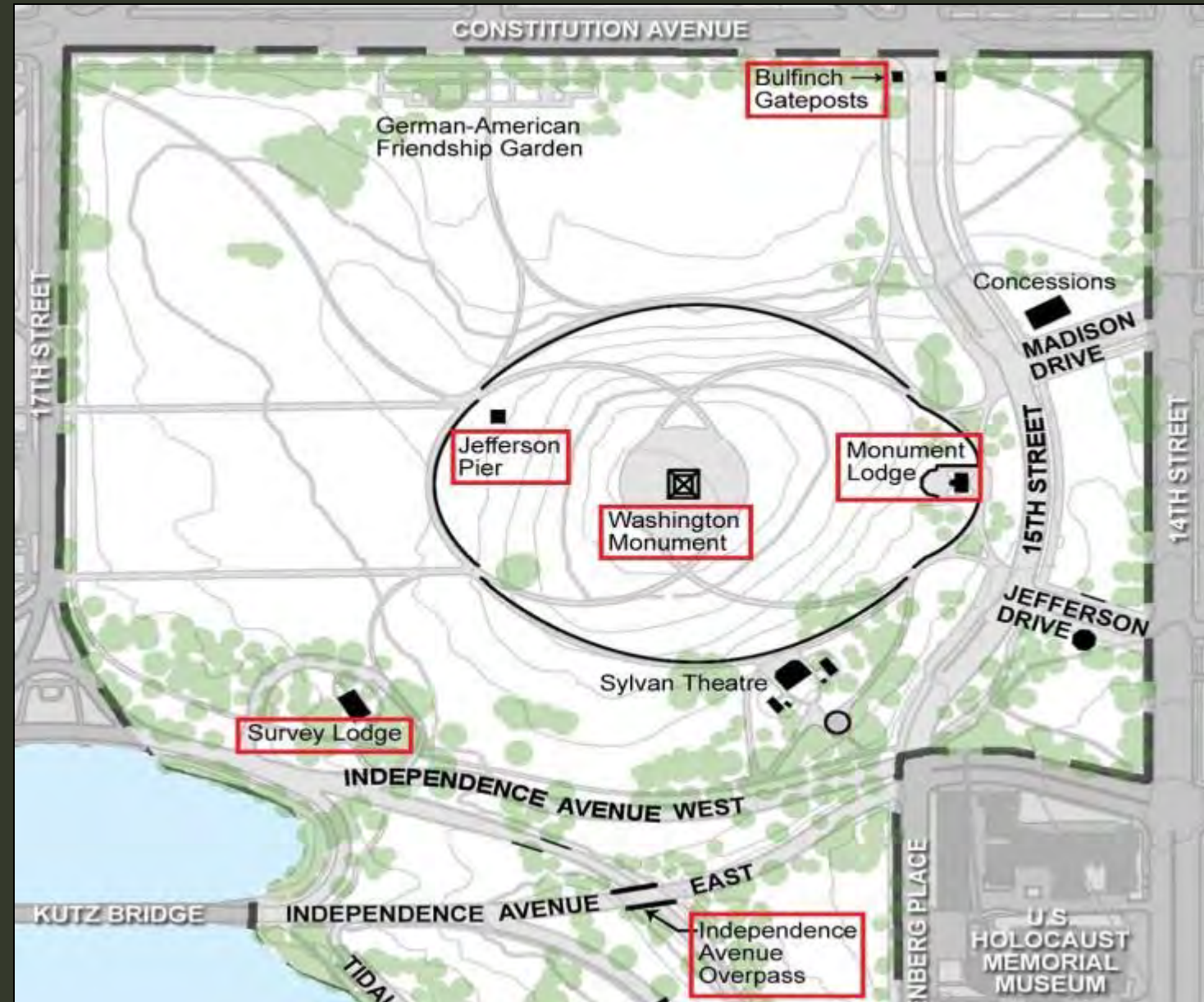
- Phoenix columns



Washington Monument and Grounds CLI Contributing Resources

Buildings and Structures

- Washington Monument
- Monument Lodge
- Survey Lodge
- Jefferson Pier Survey Marker
- Bulfinch gateposts
- Independence Avenue overpass



Washington Monument and Grounds CLI Contributing Resources

Circulation

- 14th Street, 17th Street, and Constitution Avenue corridors, including sidewalks
- Independence and Maine Avenue corridors
- Tidal Basin parking lot corridor
- Tidal Basin walk
- Raoul Wallenberg Place corridor



Washington Monument and Grounds CLI Contributing Resources

Vegetation

- Lawn
- Mulberry Tree
- Street trees along 14th & 17th streets and Constitution Avenue
- Elm Tree near Survey Lodge
- Catalpa Tree behind Survey Lodge
- Open Groves



Washington Monument and Grounds CLI Contributing Resources

Small-Scale Features

- Elevation Obelisk
- Twin Twenty double-lamp street lights
- Washington Globe single-lamp street lights
- Cast-iron and wood-slat benches
- Ring of flagpoles
- Stone-lined drainage ditch at Survey Lodge service drive
- Pipe handrail at Tidal Basin



Washington Monument and Grounds CLI Contributing Resources

Topography

- Mound
- Flats
- Berms

Land Use

- Commemoration
- Public Gathering
- Recreation
- Visitor Service

Spatial Organization

- Determined by relationship of site to other significant structures
- Functions as axis of Monumental Core



Washington Monument and Grounds CLI Contributing Resources

Views and Vistas

- From DC and the surrounding region



From Arlington House



Washington Monument and Grounds CLI Contributing Resources

Views and Vistas

- From top of the Monument



Toward the Jefferson Memorial



Washington Monument and Grounds CLI Contributing Resources

Views and Vistas

- From the site to memorials, the White House, and the Capitol



From the plaza toward the Lincoln Memorial

Washington Monument and Grounds CLI Contributing Resources

Views and Vistas

- From the memorials, the White House, and the Capitol to the site



From the Jefferson Memorial



Washington Monument and Grounds CLI Contributing Resources

Views and Vistas

- Axial views from the White House to the Jefferson Memorial



From the Ellipse

Washington Monument and Grounds CLI Contributing Resources

Views and Vistas

- Screened views of site vistas



From 15th Street



Washington Monument and Grounds Documentation

- National Register of Historic Places Nomination, 1980
- L'Enfant Plan for the City of Washington, D.C., National Register Nomination, 1997
- Washington Monument and Associated Structures: Historic Structures Report (HSR), 2004
- Washington Monument Grounds Cultural Landscape Report (CLR), 2008
- Washington Monument Grounds Cultural Landscapes Inventory (CLI), 2009

