



PUBLIC STAKEHOLDER WORKSHOP SATURDAY, MARCH 3, 2012

SUMMARY

ATTENDEES

There were 85 attendees from the public at the meeting. Please see roster at the end of this summary.

WORKSHOP SUMMARY

NPS staff and contractors welcomed the workshop participants and thanked them for giving up their Saturday morning to discuss possibilities for the non-motorized boathouse zone along the waterfront in Georgetown in Washington, DC.

Carolyn Mitchell and Tammy Stidham presented the findings of ten focus group interviews held in January and early February. Findings included information on different uses and amount of use in the zone, documentation of user needs and desires, and concerns and challenges discussed during the focus groups (please refer to the presentation).

Carolyn then provided instruction for the breakout sessions, including that individuals should group themselves as they wish. She encouraged participants to form groups of at least five individuals and stated that groups of similar perspectives might be most productive. Groups were instructed to consider the needs of all users discussed in the presentation, as they worked in breakout groups. Uses include the many non-motorized boating uses, such as competitive and recreational rowers, kayakers and canoeists, and stand up paddle boarders, as well as other land based uses, such as the million annual users of the Capital Crescent Trail. Participants were also instructed to consider the natural and historical issues of the Chesapeake and Ohio Canal National Historical Park.

Workshop participants then broke into groups, and worked for an hour with a map of the zone (Figure 1) and tracing paper to develop their ideas. At the end of the work sessions, maps were posted for everyone to examine, then each group was given an opportunity to present the highlights of what their group came up with, followed by a round of clarifying questions on each presentation. The workshop concluded with a discussion of elements common to many of the plans, and also identification of consensus items, suggested modifications, and paramount objectives.

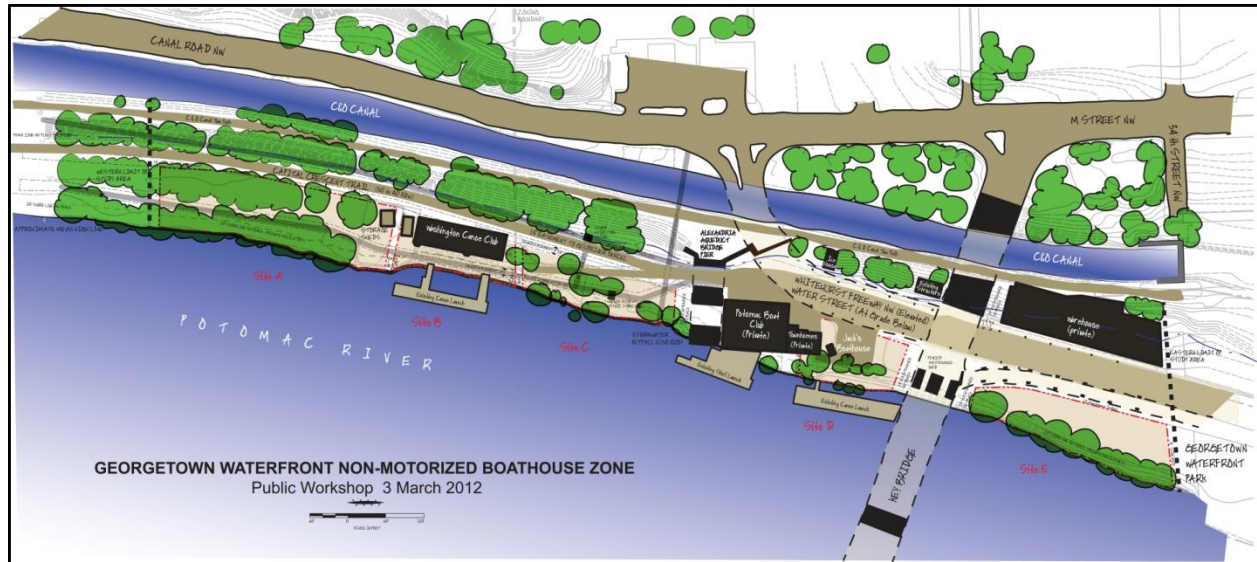


Figure 1. Constraints map shared with workshop participants.

TEAM PRESENTATIONS

TEAM 1

Name	Association
Stuart Ross	ANC 3D
Ann Haas	ANC 3D
Ed Ryan	Potomac Boat Club
Linda Greenan	Georgetown University
Eric Carcich*	GW University
Chris Walsh*	Yorktown High school, Georgetown University, Potomac Boat Club
Georgeann Higgins	Rock Creek Rowing
Jim Delflore	Unaffiliated
Bob Vom Eigen	Friends of Georgetown Waterfront Park

*team spokesperson

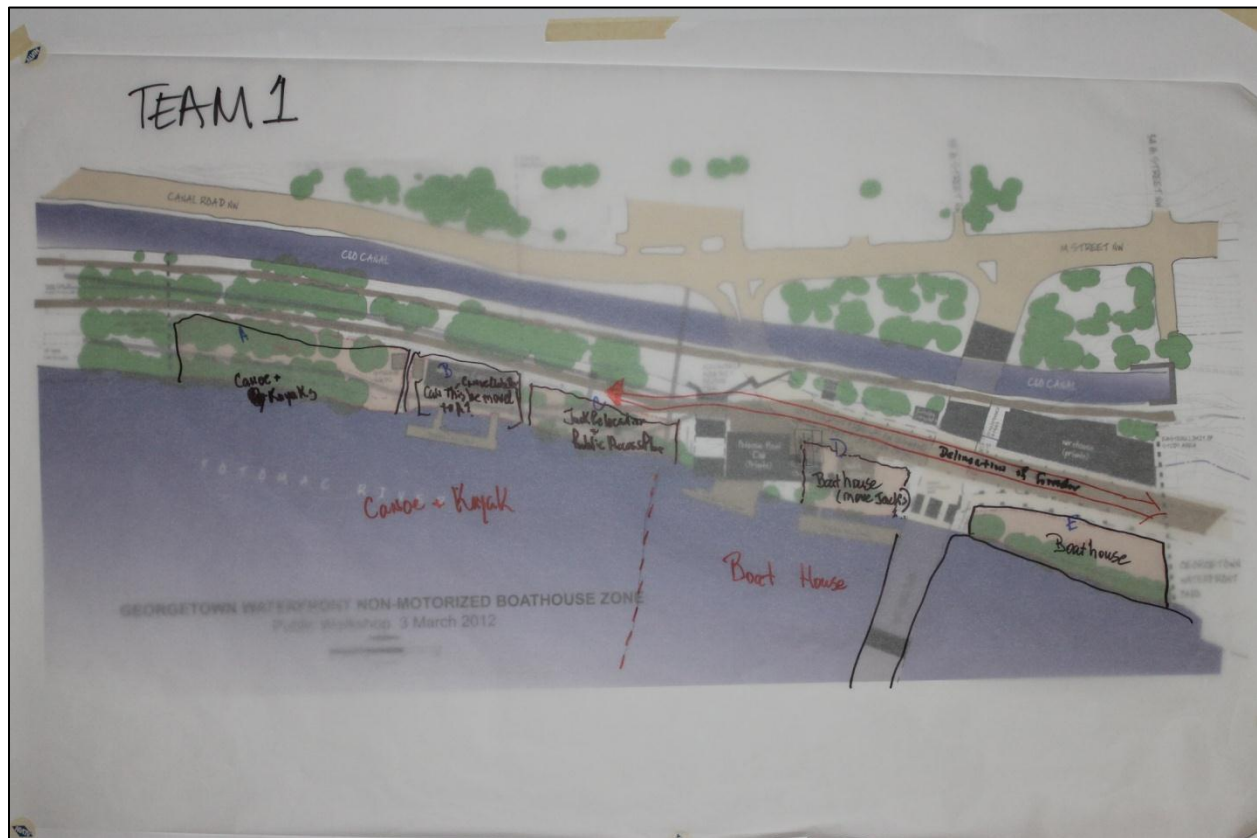


Figure 2. Team 1 Work Product

Team 1 represented several different user groups, including scholastic, university, and independent rowers, as well as ANC 3D (Palisades), and the Friends of Georgetown Waterfront Park.

Key points in this group's presentation included:

- The issue of Water Street, and the transition of uses between the trail and the more urban environment. There needs to be a delineation of uses between cyclists, pedestrians, boats, and vehicles – this is a problem that needs to be resolved. The safety issue is the number one priority
- West of the Key Bridge (upstream) could be geared towards canoe/kayak and other paddling uses. Rowing would be east or downstream of Jack's, which would be relocated to Site C. Site D and Site E would be made available for University boathouses. There is a need to delineate two clear zones canoe/kayak and boathouse
- Relocate Jack's to Site C and provide public access at Site D
- The group did not have resolution on what should happen with the Washington Canoe Club.
- Site A would remain on the table for development, but also potentially remain open. It was also mentioned that the Washington Canoe Club could be moved to Site A

TEAM 2

Name	Association
William Kirwan*	Georgetown University/Muse Architects
Chris Joroan	Georgetown University
Walter Groszyk	Citizens Association Georgetown (unofficial)
Frank Benson	Georgetown University
Scott Fleming	Georgetown University
Amber Jones	Defenders of Potomac River Parkland

*team spokesperson



Figure 3. Team 2 Work Product

Team 2 identified itself as the “Georgetown University” group. This team proposed:

- A Georgetown University boathouse would be sited on either Site A or Site E
- Washington Canoe Club would be treated as a historic structure, renovated and left in place.
- A public use area would be placed at Site C
- A Collegiate boathouse would be appropriate for either Site C or Site D
- Arrows/dashes on their map represent proposed public access points – the team members felt that it was important to provide public all along the river and stated that public access should be available on all sites except private ones
- The heavy arrow at Site C is the primary public access, right in the middle of the boathouse zone and a link between the C&O Canal Towpath to the River

TEAM 3

Name	Association
Chris Brown	Washington Canoe Club
Daniela Fairchild	Woodrow Wilson High
John Collier	Independent sculler
William Elcome	Washington Area Bicyclist Association
Gus Anderson*	Canoe Cruisers Association/Blue Ridge Voyagers
Erik Meyers	Potomac River Sports Foundation
Ross Wilson	Potomac Boat Club
Cynthia Cole	Potomac Boat Club

*team spokesperson

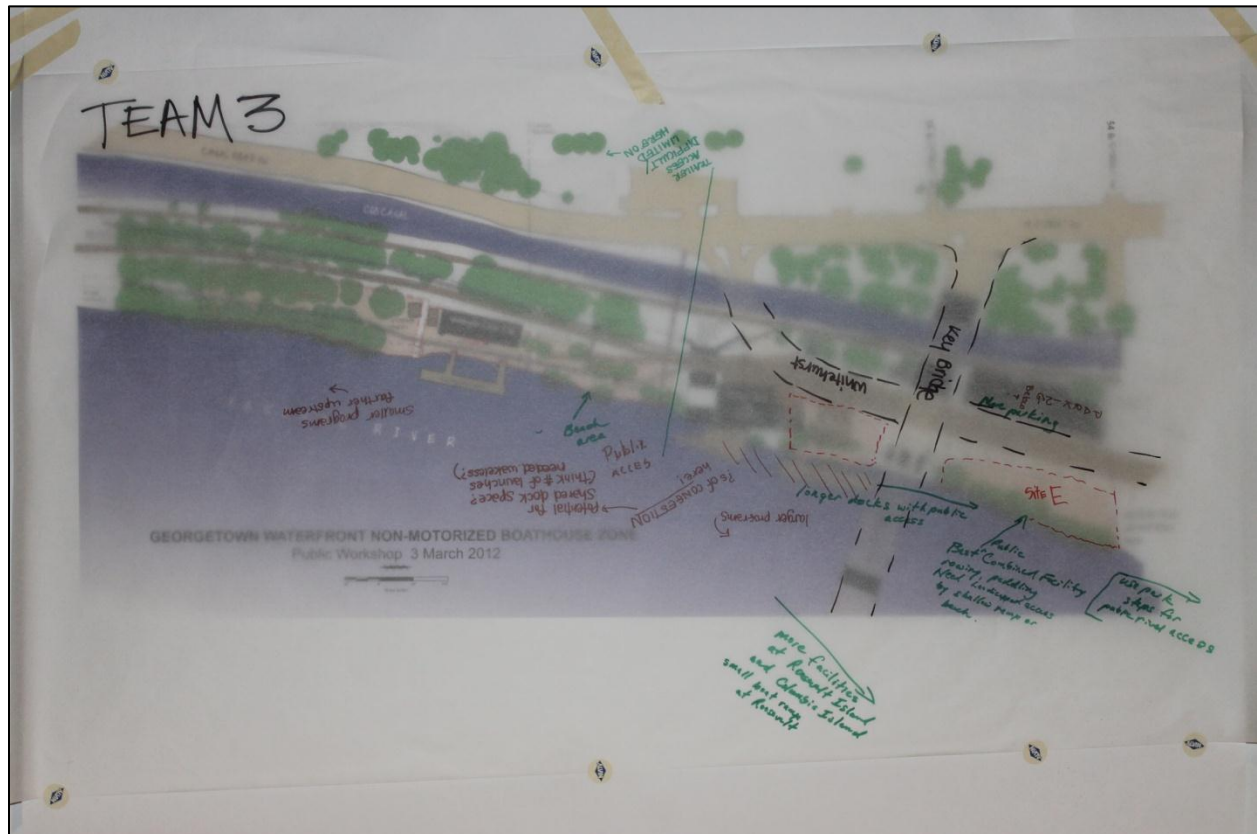


Figure 4. Team 3 Work Product

Team 3 included a mix of users, including members of the Washington Canoe Club and the Potomac Boat Club, scholastic and independent rowers, cyclists, and paddlers. This group focused on the need for handicap_access, increased public access, and multiple users along the river. They stated there is a big need for more accessible docks, etc... on the riverfront. Key points from this group included:

- The site east of the Key Bridge (Site E) would be best for combined access including handicap access facility, similar to the community rowing facility and access in Boston

- There is a need for access at Roosevelt and Columbia Islands
- The zone should include “beach” areas for public use
- Identified the need for longer docks with public access
- There is a potential for shared dock space
- More parking needs to be incorporated wherever it is possible to accommodate car top launching of private watercraft
- Smaller facilities should be located upstream, with larger facilities geared toward multiple uses downstream
- There was concern that driving large trailers through the aqueduct would cause great congestion;
- The team had not been able to focus on trail users but recognized the need to address their needs
- Parking in the bottom of the GSA-leased building, and locker rooms, social rooms, workout rooms on second floor
- There is a need to spread out uses/facilities along the water front because the best parking is downstream
- Kayakers and canoes require a car-top launch so parking should not be relegated to an inaccessible facility downstream—parking needs to be shared.

TEAM 4

Name	Association
Cheryl Norcross	Surfrider
Elisa Hammer	Surfrider
Steve Full	Georgetown University
Cathy O'Riordan	St. John's College High School Rowing
Jacobs Tilghman*	Rock Creek Rowing
Colin Aylesworth	St. John's College High School Rowing

*team spokesperson

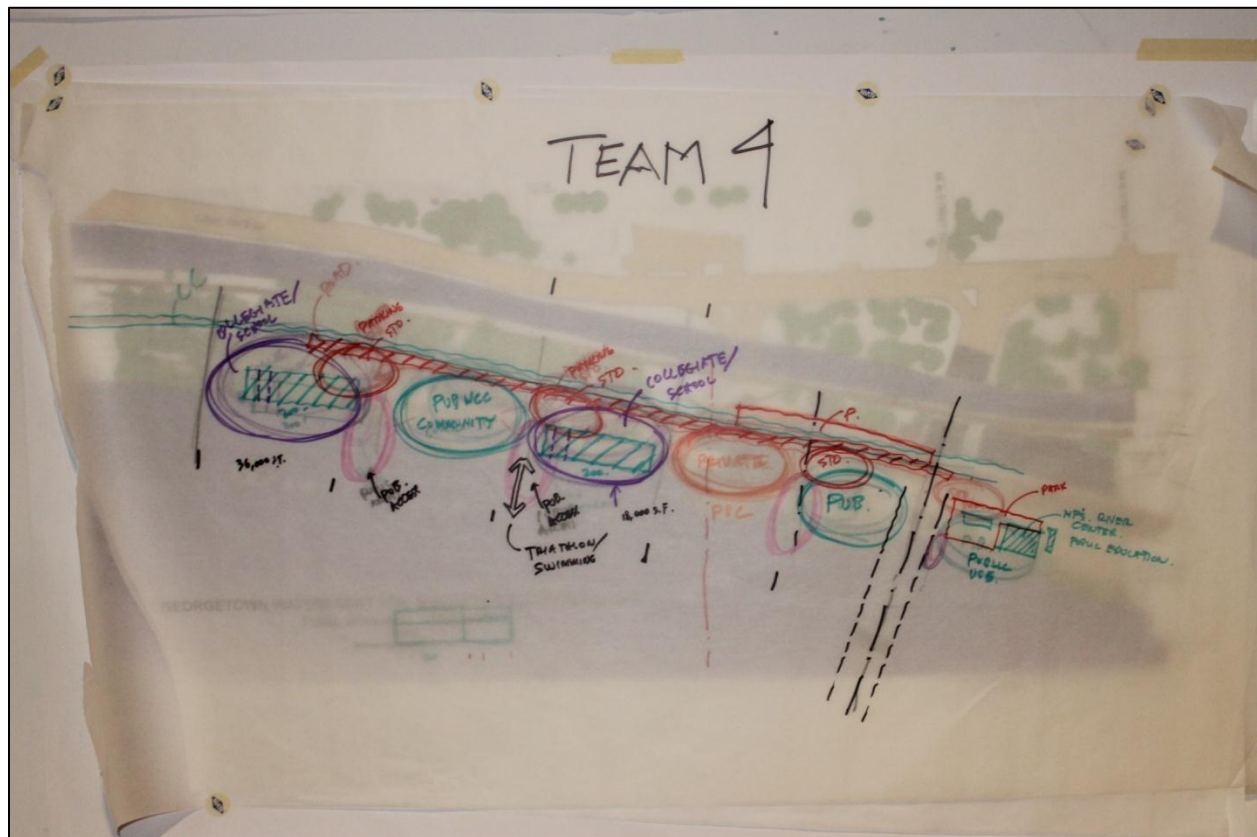


Figure 5. Team 4 Work Product

Team 4 included a mix of scholastic and collegiate rowers, as well as Surfrider representatives. The group focused on effective zoning of uses. Key points included:

- Public uses are shown in green, interspersed with infrastructure (storage, parking, etc.) in red
- Storage and parking is grouped with and adjacent to public uses
- The anchoring element would be on the site downstream of Key Bridge (Site E), and would be an NPS education/visitor use facility
- Large shells to launch at the most upstream site (Site A)

- It is less desirable to launch boats below Key Bridge and much easier to launch larger boats from Site A because of the prevailing winds and currents
- The group noted that there are different types of public access – general public access and then facilities like Jack’s
- Washington Canoe Club would remain on its site as a public access facility
- Public use facilities would be for various user groups
- There is a need to maintain trail access regardless of what facilities go in upstream of the Capital Crescent trailhead

TEAM 5

Name	Association
Anna Popov	Jack's Boathouse
Paul Simkin	Jack's Boathouse
Bret Moore*	Washington Canoe Club
Pete Thompson	Rock Creek Rowing
Lew Rumford	George Washington University
Gina Bleck	Georgetown University
Andrea Salley	Georgetown University
Tom McCready	Thompson's Customer

*team spokesperson

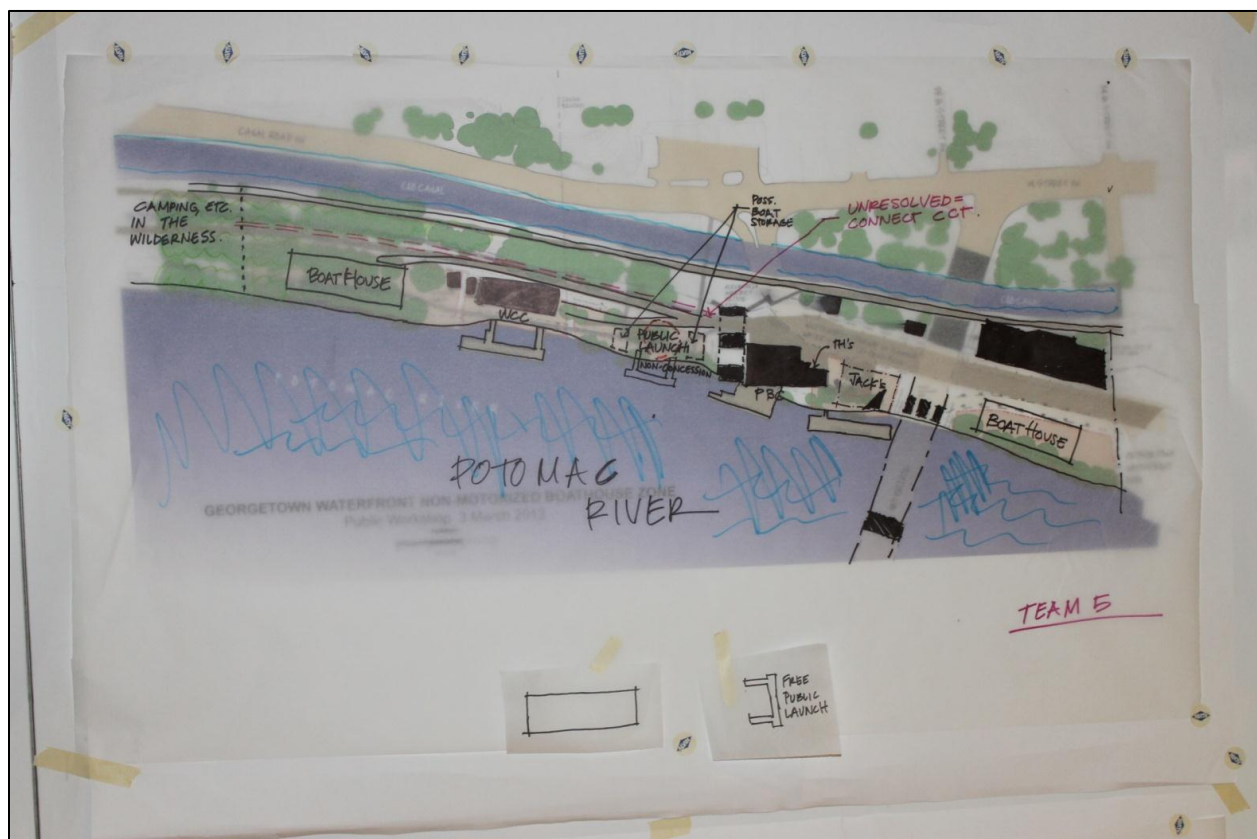


Figure 6. Team 5 work product

Team 5 included the owners of Jack's Boathouse, representatives from both Georgetown and George Washington Universities, and members and customers of Potomac Boat Club and Thompson Boat Center. Key Points from this group included:

- The group tried to look at requirements on the river
- Collegiate rowers are underrepresented in current situation
- Collegiate boathouses at either end of zone: Site A and Site E.
- Public launch area with public storage

- Need to address mixed uses on Capital Crescent Trail. One possible solution is to put Capital Crescent Trail up by the towpath (reroute at Water street/K Street)

TEAM 6

Name	Association
Gretchen Ellsworth	PBC/FOGWP
Ann Lochstampfor	C&O Canal Association
Pat McArdle	Georgetown University
Andy Stephens	Washington Kayak Club
Tom Blount	Chesapeake Paddlers Association/Waters Edge Kayak
Brian Stevens	Chesapeake Paddlers Association

*team spokesperson

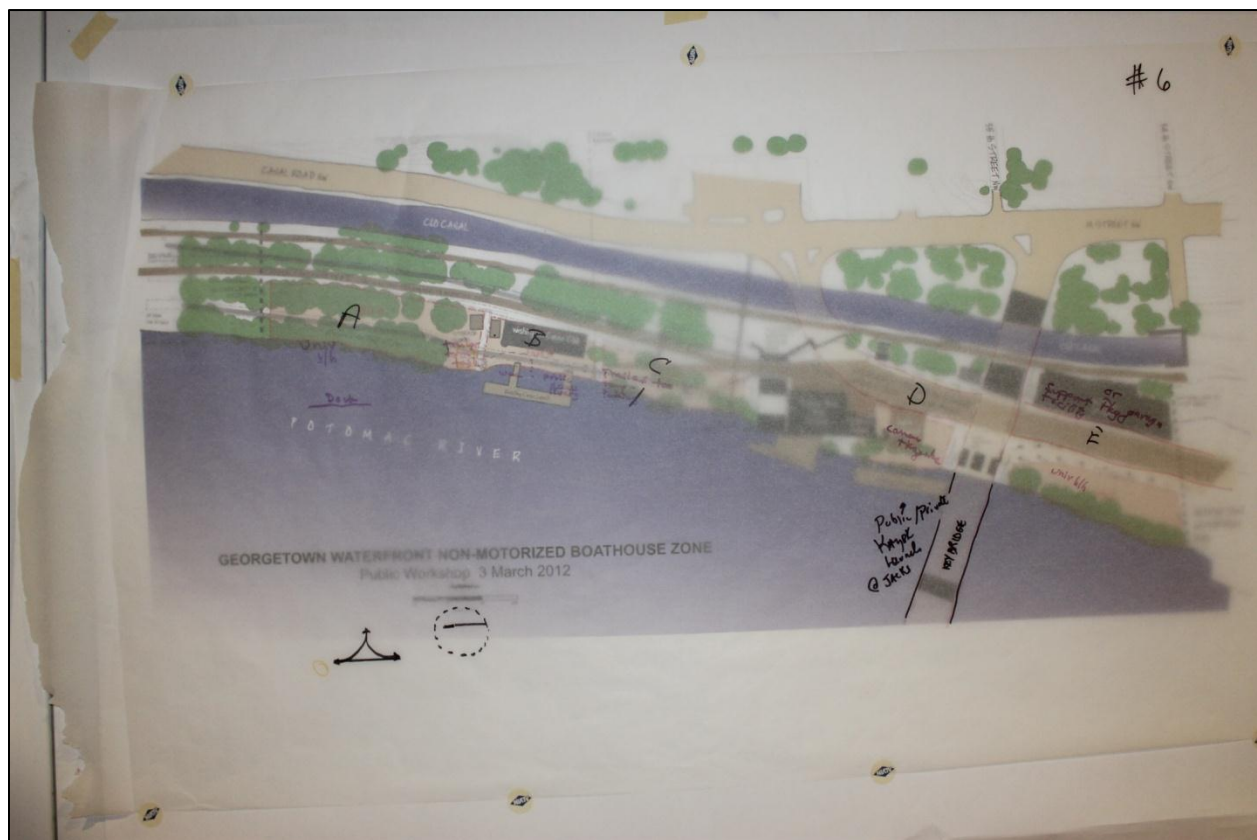


Figure 7. Team 6 work product

Team 6 was varied, and consisted of several paddlers/paddling interests, a member of the Potomac Boat Club and Friends of Georgetown Waterfront Park, Georgetown University, and the C and O Canal Association. Key points from this group included:

- Site A lends itself best to a collegiate boathouse because parking and vehicular access is less intense for these users
- Parking is the biggest issue, especially to paddlers who transport their boats on their cars
- Vehicular traffic going up the trailhead of the Cap Crescent Trail should be minimized

- The “mixing bowl” at end of the the Capital Crescent Trail is an issue
- The group would like Washington Canoe Club structure to stay - keep both the structure and its functions
- Public access is an issue– divide Canoe Club use between members and public access
- It is premature to put a permanent structure at Site C - pending DC Water plans. Can use as temporary boathouse, possibly for rowing shells and canoe storage. Parking for paddlers should be located at the GSA-leased building or Site C but there should be no cars permitted beyond Site C
- The temporary structure at Site C could be a demountable boathouse (temporary structure that can be taken down, but looks more attractive than a tent, such as is at the rowing facility on the Anacostia River)
- The Jack’s Boathouse site is fine as is, but needs to provide free launching for folks who own their own boats or paddleboards.
- Paddlers noted that there needs to be more access to river – there is nowhere along this part of the river to just launch your boat.
- They bookended the whole zone with 2 collegiate facilities (Sites A and E)
- The GSA-leased facility could be used as a parking garage/parking area
- Did not address, but identified the critical issue of traffic at the “mixing bowl” at Water Street.

TEAM 7

Name	Association
Melanie Kaplan	Surfrider/Stand-up Paddling
Greg Billing	WABA
Willem Brakel*	Bethesda-Chevy Chase High School
Mike Farrey	Friends of Georgetown Waterfront Park
Mark Doris	George Washington University
Derek Parsons	Washington-Lee High School Crew
Tom Guncik	George Washington University

*team spokesperson

Team 7 included scholastic and collegiate rowers, leadership from Friends of Georgetown Waterfront Park, stand-up paddling, and cycling interests. Rather than submit a layout, this team submitted a list of guiding principles for use during the planning process:

1. Maximize Access for ALL users—rowers, boaters, swimmers, bikers, hikers, birders
2. Support the Georgetown and George Washington University proposals for boathouses, with provisions for public access.
3. Factor plans for [Thompson Boat Center] into this plan.
4. Be mindful of safety of bikers and walkers; connectivity and signage for trails.
5. Control vehicular traffic/parking-only water-related uses.
6. Consider options for development of the [Washington] Canoe Club site.
7. Emphasize sustainability/environmental protection; green/LEED buildings; maintain natural river banks.
8. Consider temporary Public uses of the Dempsey site/WASA [DC Water] site [Site C]—DC Water guidelines should be made public.
9. Prioritize the development of sites to provide meaningful benefits SOON.
10. Appreciate the careful consultative process, but let’s proceed to ACTION.

- Site C should be for public and private access and concessions. Extend Water Street and put a turnaround in here. Provide public access for paddlers and canoe public access above the new turnaround
- Extend this public access into Site B from Site C
- Access issues preclude a boathouse at Site A – either keep it undeveloped or allow only low-impact facilities--keep it to walk-in concessions, hiking, and more low-impact pedestrian access. Having a boathouse here would result in traffic and access issues.
- Provide access for swimmers – the city will compete to host a future Olympics and a site for the river swim event could be sited somewhere in the zone.
- Use the aqueduct as a transition point between country and city.

TEAM 9

First Name	Association
Dolores Milmo	Audubon Naturalist Society
Carl C. Cole	HCBA - Capital YC
Chuck Haberlein	Chesapeake Paddlers Association
Kent Slowinski	ANC 3D
Larry Gladieux	Canoe Cruisers/BlueRidge Voyagers
DJ Manalo	Chesapeake Paddlers Association
Kurt Thiel	USA Swimming

*team spokesperson

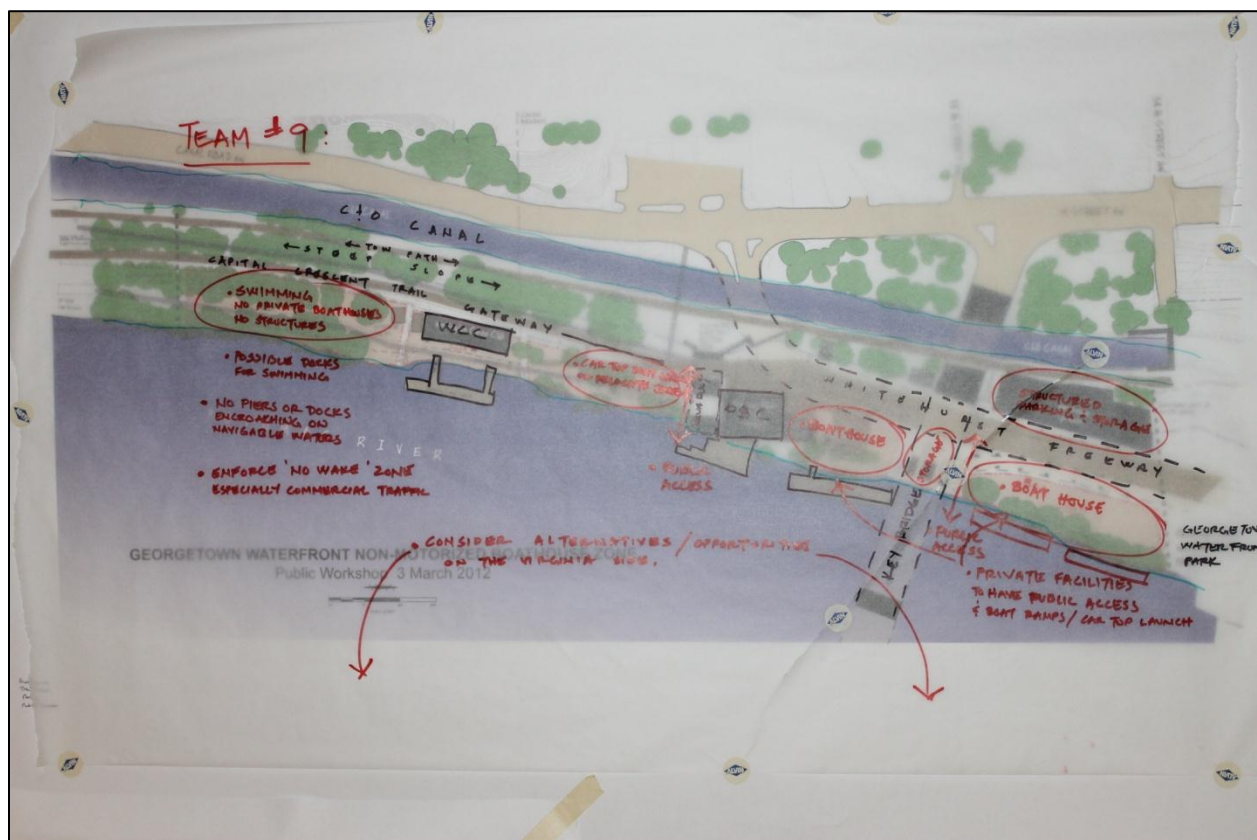


Figure 10. Team 9 work product

This team included paddlers, a representative from Capital Yacht Club and the Boy Scouts of America, an ANC member, paddlers, a representative from USA Swimming, and a representative from Audubon Naturalist Society. Key points from this group included:

- Accommodate all users
- Keep Site A natural, without structures, docks for swimming would be possible here, although they should not encroach on navigable waters; enforce the no wake zone, particularly commercial traffic
- Washington Canoe Club (Site B) should be renovated and remain in its place
- Site C is appropriate for car-top boat launching

- Jack's also relocated to Dempsey's (Site C)
- Potomac Boat Club should stay as it is
- Sites D and E around the Key Bridge should be collegiate boathouses
- Parking and storage at the GSA leased building
- More rowing facilities should be considered across the river in Arlington

TEAM 10

Name	Association
Henry (Hank) McEntee*	Biking, PBC, TBC
Margie Orrick	Biking, kayaking, Rock Creek Rowing (TBC)
Joe Olbrys	TBC, rower, GSI
Elizabeth Merritt	National Trust for Historic Preservation
Tony Johnson	Georgetown University
Sally Strain	DC resident, Defenders of Potomac River Parkland

*Team spokesperson

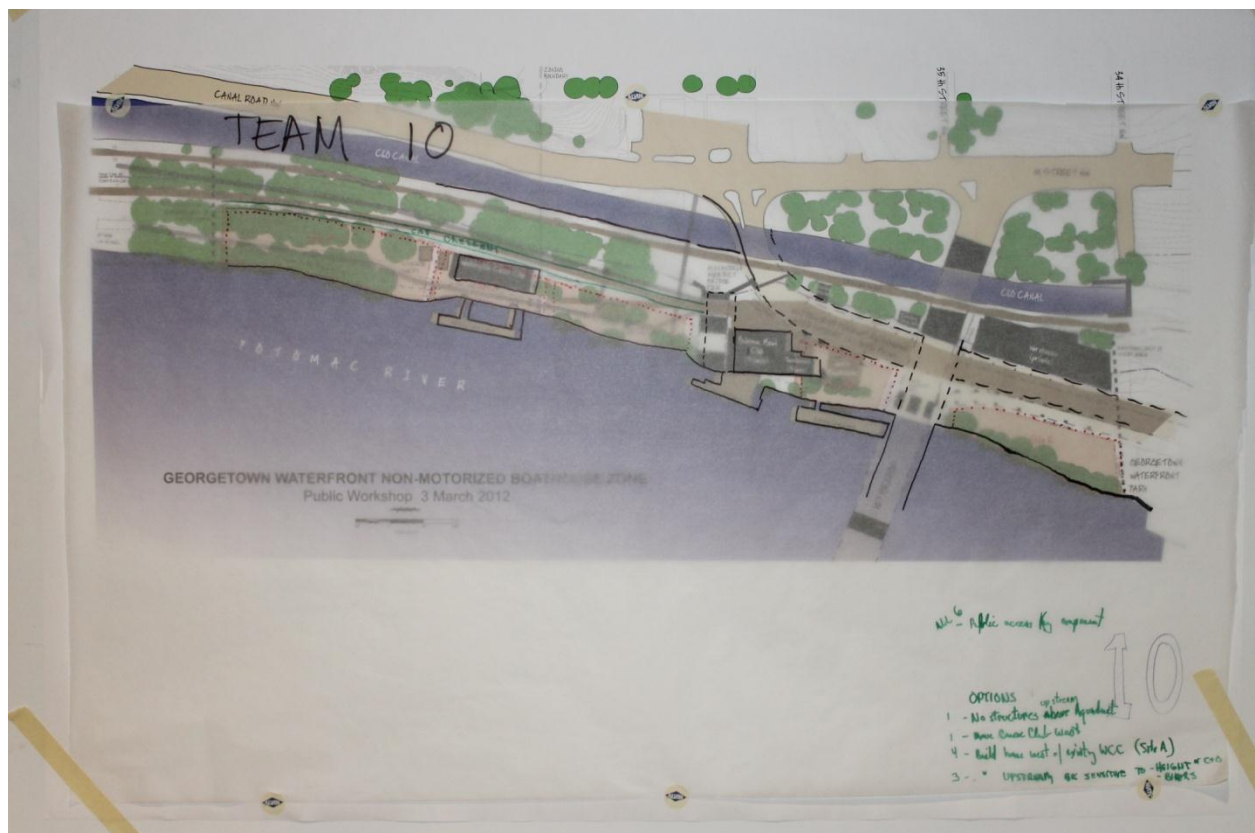


Figure 11. Team 10 work product

This team included cyclists and rowers from Potomac Boat Club and Thompson Boat Center, Georgetown University, The National Trust for Historic Preservation, and representation from Defenders of Potomac River Parkland. Key points from this group included:

- They would like to see public access serve a diverse population representing the city.
- The easiest sites to develop are Sites A and E
- There was some disagreement on Site A. One option was to limit all development upstream of the aqueduct. Another option discussed was to put a boathouse on Site A. A collegiate boathouse was suggested because there is not a lot of traffic/ parking required for university students from either Georgetown or George Washington, which are walking or biking distance and because the collegiate rowers can walk their boats in – people routinely walk rowing shells from Washington Harbor to TBC.
- The Washington Canoe Club should be maintained. One option discussed was to move it upstream to or toward Site A, but need to keep in mind any conflicts between kayak/canoeists and rowers (the representative from the National Trust for Historic Preservation feels its historic integrity could be preserved if it were moved)
- Although it is workable to mix uses and traffic types, it would be better to keep density in the downstream area of the boathouse zone
- Keeping density downstream may help resolve the issue of the “threshold” perceived at the Aqueduct.
- Need to have bikers slow down in the area of the Canoe Club, in this transition zone. Possibly add signage or other calming measures to site to indicate change in speed to bikers.
- Protect the C&O Canal National Historical Park from private development
- Preserve the wooded area upriver from the Washington Canoe Club and extend the project zone downriver
- Include Thompson's Boat Center and other locations.

DISCUSSION OF CONSENSUS POINTS AND OBJECTIONS

CONSENSUS POINTS

When asked if there were points of consensus among all the groups, several were discussed. Points of consensus included:

- The Washington Canoe Club structure should remain (there was not agreement on whether it was appropriate to move the structure, and an objection to moving the structure was noted).
- There should be additional boating facilities (note: there was not consensus on the number or the type of facility)
- There should be enhanced access to the river; one access point should be multipurpose.
- The parking issue is important and should be considered carefully.

Modifications were also discussed, and were captured in the consensus discussions as they focused on the consensus items.

OBJECTIONS

There were several objections noted:

- There was an objection to moving the Washington Canoe Club to the west (To or Toward Site A), and to moving historic structures generally.
- The Friends of Georgetown Waterfront Park objected to placing any facilities east of 34th Street (into the open space of Georgetown Waterfront Park).
- Others objected to limiting the zone to the 34th Street boundary.
- There was an objection to placing any new buildings west of the trail head

OBSERVATIONS

Although no consensus was reached on the following, there were several things noted or included in multiple team proposals:

- The need to consider and improve the transition between the end of the Capital Crescent Trail and 34th Street along Water Street was mentioned several times, although most teams did not come up with a solution.
- The aqueduct was mentioned as an important feature by several teams, although it did not seem to mean the same thing to the teams that found it important. It represented a gateway of some type to several of the teams, a constraint or bottleneck, or a line of demarcation when considering where to place of different sorts of facilities (rowers in one direction, paddlers in another).
- There was least agreement on what should go on Site A, if anything, with several teams presenting multiple options. Options ranged from no development on that site to light development to use of the site for a public or university boathouse.
- There was the most agreement that a facility of some sort should be placed on Site E.

WORKSHOP ATTENDEES

FIRST NAME	LAST NAME	ASSOCIATION
Gina	Bleck	Georgetown University
Patrick	McArdle	Georgetown University
Colin	Aylesworth	St. John's College High School
Michael	Farrey	Bethesda Chevy Chase High School
Chris	Jordan	Georgetown University
Kent	Slowinski	Advisory Neighborhood Commissoin (ANC) 3D
Cheryl	Norcross	Surfrider (DC Chapter)
Ann	Satterthwaite	Friends of Georgetown Waterfront Park (FoGWP)
Gretchen	Ellsworth	FoGWP/Potomac Boat Club
Bret	Moore	Washingotn Canoe Club (WCC)
Denis	Crean	USMS/Waveone Swimming
Tom	McCready	Thompson Boat Center Customer
Anna	Popov	Jack's Boathouse
Paul	Simkin	Jack's Boathouse
Mark	Doras	George Washington University
Brian	Stevens	Self
Scott	Fleming	Georgetown University
Tom	Blount	Chesapeake Paddlers Association

Upasana	Kaku	
Henry	McEntee	Bethesda-Chevy Chase High School (BCC)
Sally	Strain	Defenders of Potomac River Parkland
Chuck	Haberlein	Chesapeake Paddlers Association
FIRST NAME	LAST NAME	ASSOCIATION
Derek	Parsons	Washington Lee High school Crew
Walter	Groszyk	
Robert	Von Eigen	FoGWP
Pete	Thompson	Rock Creek Rowing
Bill	Kirwan	Georgetown University/Muse Architects
Donal	Barron	DC Water
DJ	Manalo	CPA Kayakers, Inc.
PK	Woodward	
Stu	Ross	Chair ANC 3D
Ned	Preston	C&O Canal Association
Eric	Arcich	George Washington University Rowing
Chris	Brown	Washington Canoe Club
Kurt	Thiel	USA Swimming
James	Tilghman	Rock Creek Rowing
Catherine	O'Riordan	St. John's High school
Kathy	Summers	Stand-Up Paddling DC (SUPDC)
Tim	Summers	SUPDC
Larry	Gladieux	Blue Ridge Voyagers, Canoe Cruisers Association
Gus	Anderson	Blue Ridge Voyagers, Canoe Cruisers Association
Andrea	Salley	Georgetown University
Greg	Billing	Washington Area Bicyclist Association (WABA)
Erik	Meyers	PRSP
Andy	Stephens	Washington Kayak Club
Lew	Rumford	George Washington University
Rosa	Wilson	Potomac Boat Club
Rick	Neuman	Sierra Club
Ann	Haas	ANC 3D
Willem	H Kaplan	
Melanie	Kaplan	Surfrider
Justin	Carl	DC Water (Clean Rivers)
Chris	Walsh	Yorktown High school
Stephen	Full	Georgetown Women's Rowing
Miranda	Paris	Georgetown Women's Rowing
Cynthia	Cole	Potomac Boat Club
Vincent	Clementi	Surfrider
Carl	C. Cole	ACBA & CYC
William	Elcome	Member WABA

Sheila	Weiderfeld	Former C&O Commission Chair
Joe	Olerys	Thompson Boat Center
Margie	Orrick	Rock Creek Rowing
Tony	Johnson	Georgetown University
FIRST NAME	LAST NAME	ASSOCIATION
Elizabeth	Merritt	National Trust for Historic Preservation
Elisa	Hammer	Surfrider
Georgeann	Higgins	Rock Creek Rowing
John	Cullier	PRC
Kim	Lefelar	St. John's College High school
Frank	Benson	Georgetown University
Ann	Lochstampfor	C&O Canal Association
Ernie	Brooks	Coalition for the Capital Crescent Trail
Dolores	Milmor	Aububon Naturalist Society
Susan & John	Severtson	Residents of 3303 Water Condominiums
Frank & Draga	Schlesinger	Residents of Flour Mill Condominiums
Ed	Ryan	Potomac Boat Club
Johan	Severtson	Citizen
Daniela	Fairchild	Woodrow Wilson HS
Linda	Greenan	Georgetown University
Jim	DeFiore	DC Bar
Matt	Madigan	Potomac Boat Club
Vincent	Puma	Georgetown Alumnus
Amber	Jones	Defenders of Georgetown Potomac River Parkland
Tom	Guncik	George Washington University
Shaun	Courtney	Patch.com
Robert	Devaney	The Georgetown Newspaper

WORKSHOP STAFFING

NPS

Kimberly Benson, National Capital Region
 Kevin Brandt, Chesapeake & Ohio Canal National Historical Park
 Brian Carlstrom, Chesapeake & Ohio Canal National Historical Park
 Cindy Cox, Rock Creek Park
 John Hitchcock, Chesapeake & Ohio Canal National Historical Park
 Peter May, National Capital Region
 Tara Morrison, Rock Creek Park
 Tammy Stidham, National Capital Region

CONTRACTORS

Julie Eitner, Louis Berger Group, Inc.

Carolyn Mitchell, Louis Berger Group, Inc.
Margaret Stewart, Louis Berger Group, Inc.
Julia Yuan, Louis Berger Group, Inc.