








### Legend

- |  |  |
|--|--|
|  Staging Area |  Stream |
|  ROW          |  Trees  |

0 150 300  
  
 Feet



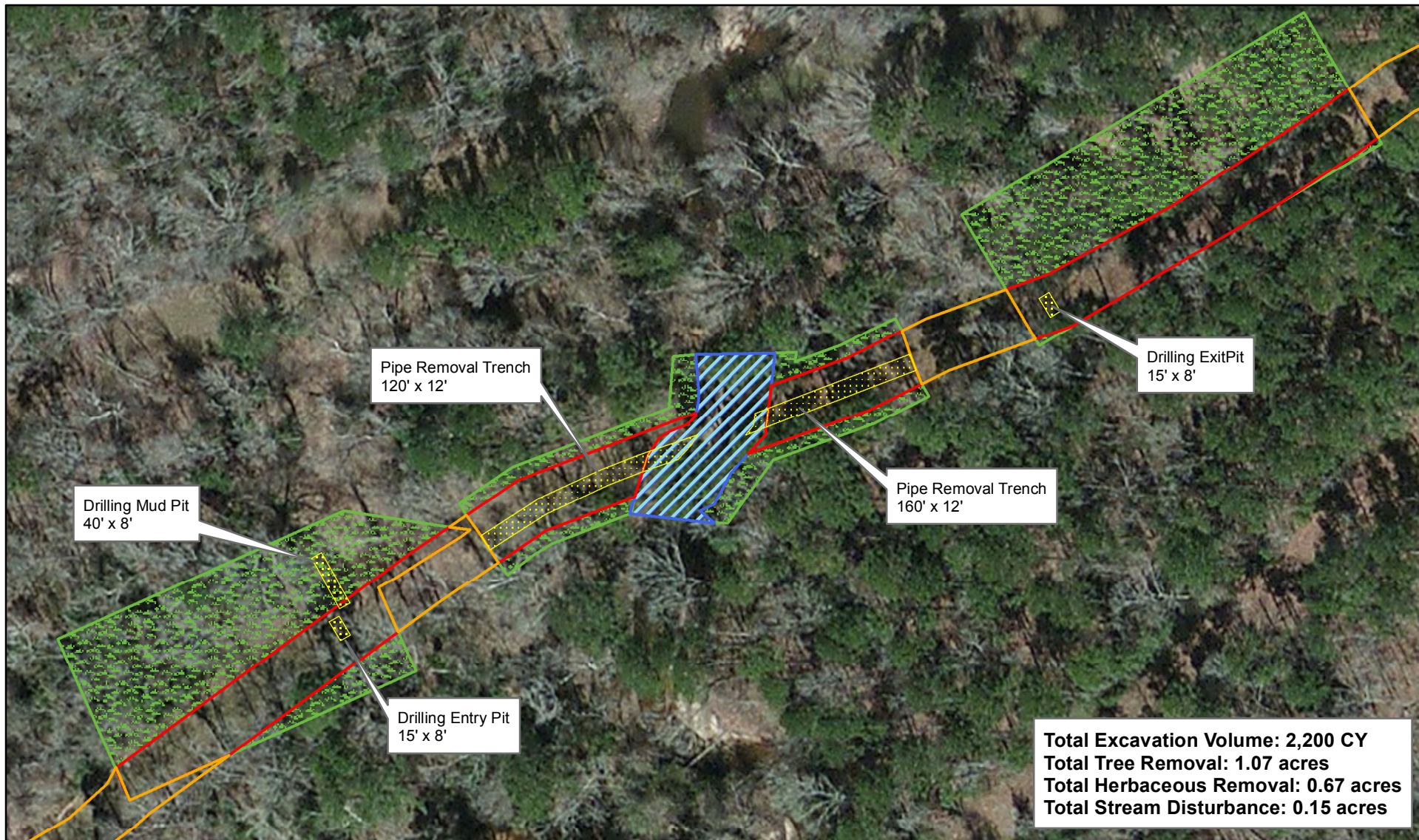
**Aerial Drawing - HDD Configuration  
 Right-of-Way Improvement and  
 Pipeline Lowering Project  
 Tennessee Gas Pipeline Company, LP  
 Polk County, Texas**

Page 1 of 1

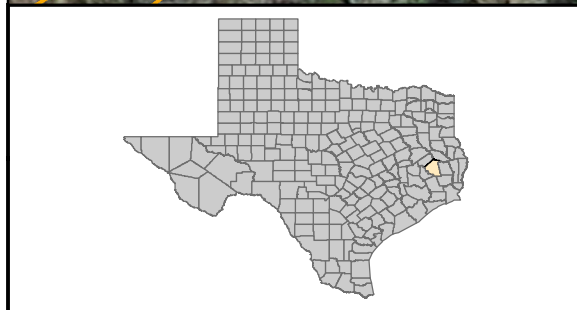
Scale: 1:3,600

NAD83 TX Central 4203

Date: May 2012



**Total Excavation Volume: 2,200 CY**  
**Total Tree Removal: 1.07 acres**  
**Total Herbaceous Removal: 0.67 acres**  
**Total Stream Disturbance: 0.15 acres**



**Legend**

Excavation Area	ROW
Staging Area	Stream
	Trees

0 50 100  
Feet

**Aerial Drawing - HDD Configuration**  
**Right-of-Way Improvement and**  
**Pipeline Lowering Project**  
**Tennessee Gas Pipeline Company, LP**  
**Polk County, Texas**

Page 1 of 1	Scale: 1:1,200
NAD83 TX Central 4203	Date: May 2012