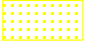






### Legend

-  Excavation Area
-  Staging Area

 ROW

 Stream

 Trees

0 150 300  
  
 Feet



**Aerial Drawing**  
**Open-Cut Configuration**  
**Right-of-Way Improvement and**  
**Pipeline Lowering Project**  
**Tennessee Gas Pipeline Company, LP**  
**Polk County, Texas**

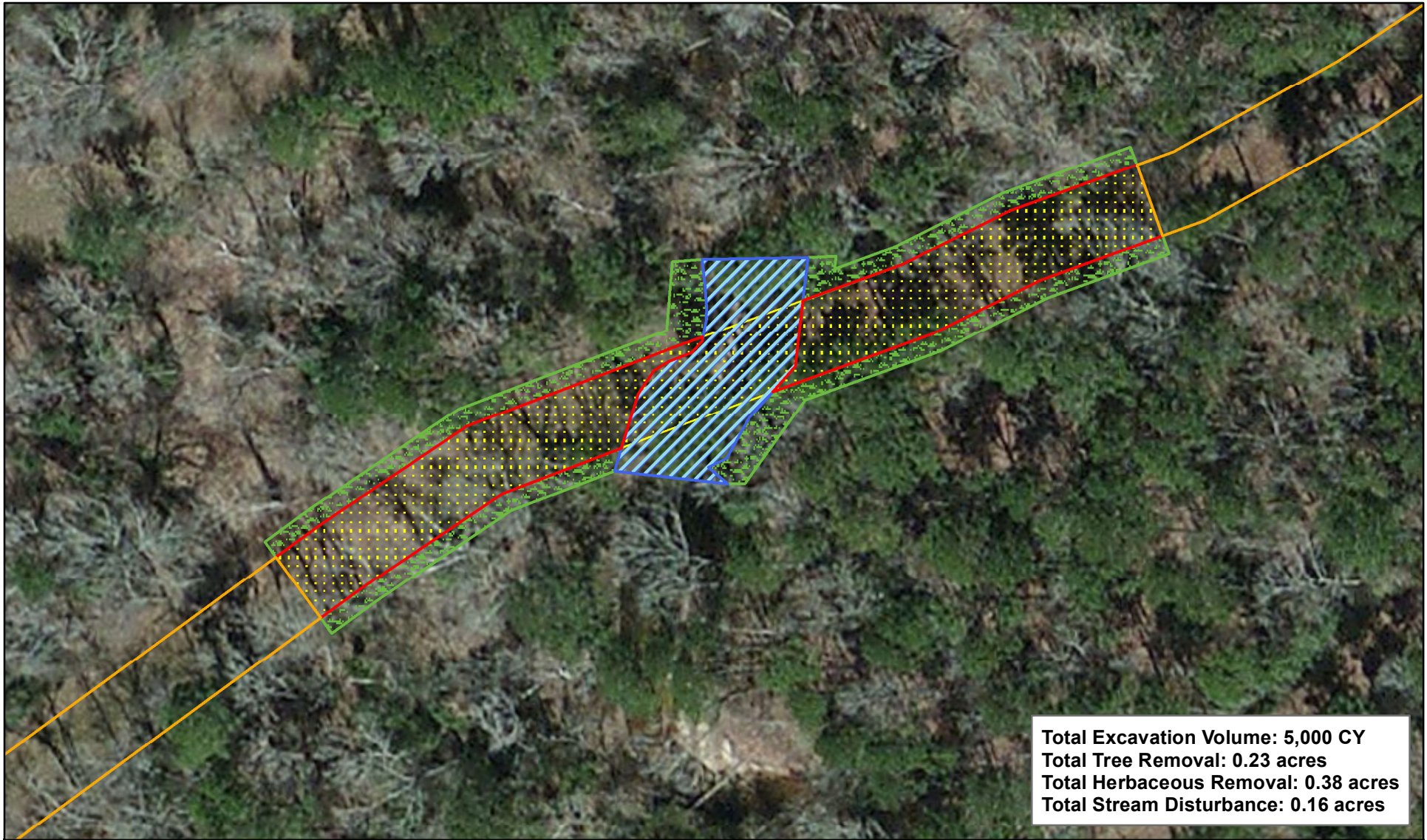
Page 1 of 1

Scale: 1:3,600

NAD83 TX Central 4203

Date: May 2012

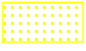









Total Excavation Volume: 5,000 CY  
 Total Tree Removal: 0.23 acres  
 Total Herbaceous Removal: 0.38 acres  
 Total Stream Disturbance: 0.16 acres



### Legend

- |   |  |
|---|--|
|  Excavation Area |  ROW    |
|  Staging Area    |  Stream |
|   |  Trees  |

0 37.5 75  
  
 Feet



Aerial Drawing  
 Open-Cut Configuration  
 Right-of-Way Improvement and  
 Pipeline Lowering Project  
 Tennessee Gas Pipeline Company, LP  
 Polk County, Texas

Page 1 of 1

Scale: 1:900

NAD83 TX Central 4203

Date: May 2012