

Commission Committees, References, and Appendices



Commission Committees, References, and Appendices divider photos (top to bottom)

- Daufuskie Island, Beaufort County, SC (Photo Credit: NPS)
- Traditional Gullah Geechee Home, Hog Hammock Community, Sapelo Island, McIntosh County, GA (Photo Credit: Jeanne C. Cyriaque)
- Child's Grave in the Springfield Cemetery, Brookgreen Gardens, Murrells Inlet, Georgetown County, SC (Photo Credit: Althea Natalga Sumpter)

GULLAH GEECHEE CULTURAL HERITAGE CORRIDOR COMMISSION COMMITTEES, 2008–2012

[A new committee structure to be developed following management plan completion]

STANDING COMMITTEES

Executive Committee

Ronald Daise, Chair
Althea Natalga Sumpter, Vice Chair
Charles H. Hall, Secretary
Ralph B. Johnson, Treasurer
Emory S. Campbell, Former Chair
Eulis A. Willis, Former Vice Chair
Jeanne C. Cyriaque, Former Secretary⁴

Fiduciary Partnership Committee

John H. Haley, Chair⁵
Emory S. Campbell
Charles H. Hall
Willie B. Heyward
Deborah L. Mack⁶
William Saunders

General Management Plan Committee

Marquetta L. Goodwine, Chair
J. Herman Blake
Emory S. Campbell
Louise Miller Cohen
Jeanne C. Cyriaque
Ronald Daise
Veronica D. Gerald
Nichole Green
John H. Haley
Antoinette Jackson
William Jefferson⁷
Ralph B. Johnson
Deborah L. Mack
Eulis A. Willis

Criteria Subcommittee

J. Herman Blake
Veronica D. Gerald

⁴ Jeanne C. Cyriaque resigned from the Commission as of November 2011

⁵ John H. Haley resigned from the Commission as of October 31, 2011

⁶ Deborah L. Mack resigned from the Commission as of February 2010

⁷ William Jefferson resigned from the Commission as of February 2010

Inventory Subcommittee

Nichole Green, Chair
Jeanne C. Cyriaque
John H. Haley
Antoinette Jackson
Eulis A. Willis

Public Involvement Subcommittee

Louise Miller Cohen
Ronald Daise
Eulis A. Willis

Marketing Committee

Ronald Daise, Chair
Nichole Green
Willie B. Heyward
Deborah L. Mack
Glenda Simmons-Jenkins, Former Chair⁸

Resource Development Committee

Althea Natalga Sumpter, Chair
Lana Carter
Daniel Cromer
Anthony E. Dixon
David B. Frank
Amir Jamal Touré
Eulis A. Willis

AD-HOC COMMITTEES

Bylaws Committee

David B. Frank, Chair
Jeanne C. Cyriaque
Willie B. Heyward
Antoinette Jackson
Amir Jamal Touré

Nominating Committee

Charles H. Hall, Chair
J. Herman Blake
Nichole Green
Eulis A. Willis

Staffing Committee

Charles H. Hall, Chair
Antoinette Jackson
Ralph B. Johnson

⁸ Glenda Simmons-Jenkins resigned from the Commission as of July 2009

ISSUE-SPECIFIC COMMITTEES AND SUBCOMMITTEES

Boundary Subcommittee

(under General Management Plan Committee)

Anthony E. Dixon
Veronica D. Gerald
John H. Haley

Coastal Heritage Centers Subcommittee

(under General Management Plan Committee)

J. Herman Blake
Lana Carter
Louise Miller Cohen
Charles H. Hall
Antoinette Jackson

Partner Packet / Partnership Subcommittee

(under Marketing and Resource Development Committees)

Ronald Daise, Co-chair
Lana Carter
Daniel Cromer
Anthony E. Dixon
David B. Frank
Nichole Green
Willie B. Heyward
Althea Natalga Sumpter, Co-chair
Amir Jamal Touré
Eulis A. Willis

Interpretation Plan Committee

Nichole Green, Chair
Emory S. Campbell
Louise Miller Cohen
Jeanne C. Cyriaque
Anthony E. Dixon
David B. Frank
Veronica D. Gerald
John H. Haley
Charles H. Hall
Antoinette Jackson
Amir Jamal Touré

Implementation Plan Committee

Ronald Daise, Chair
J. Herman Blake
Emory S. Campbell
Marquetta L. Goodwine
Antoinette Jackson
Ralph B. Johnson
Althea Natalga Sumpter
Eulis A. Willis

Management Plan Review Committee

Ronald Daise, Chair
J. Herman Blake
Emory S. Campbell
Marquette L. Goodwine
John H. Haley
Charles H. Hall
Antoinette Jackson
Ralph B. Johnson
Althea Natalga Sumpter
Eulis A. Willis
Michael A. Allen

Public Statement Policy Committee

Eulis Willis, Chair
Louise Miller Cohen
Anthony E. Dixon
David B. Frank
Willie B. Heyward
Amir Jamal Touré

Web Design Committee

Althea Natalga Sumpter, Chair
J. Herman Blake
Ronald Daise
Anthony E. Dixon
Nichole Green
Antoinette Jackson

TIME LINE OF GULLAH GEECHEE CULTURAL HERITAGE CORRIDOR COMMITTEE DEVELOPMENT AND MANAGEMENT PLAN PROCESS

April 21–23, 2008

The Commissioners assembled at Penn Center, St. Helena Island, SC. The session was organized and facilitated by the National Park Service, Southeast Regional National Heritage Area Program Office. The majority of the meeting focused on presentations of ethical and legal issues relating to service on a National Commission as Unpaid Governmental Employees. Representatives of several existing national park areas presented illustrative cases.

The Commissioners then met without the presence of nonmembers, and without a designated leader. By common consent, participants selected Commissioner J. Herman Blake to serve as lead person for the Commission until executive officers were elected. Commissioner Blake then selected Commissioner David Frank to organize a By-laws Committee and Commissioner Charles Hall to organize a Nominating committee. Commissioner Lana Carter was selected as a recorder.

With the support of Michael Allen (NPS Liaison), Commissioner Blake planned the organizational meeting scheduled to take place in Charleston, SC.

May 19, 2008

The Commission, at its meeting in Charleston, SC, approved the by-laws recommended (as amended) by Commissioner David Frank and his committee. Commissioner Charles Hall presented a slate of nominees selected by the Nominating Committee. The Commission then elected the following Executive Committee members, reflecting a representative from each of the four states: Emory S. Campbell, Chair (SC); Eulis A. Willis, Vice Chair (NC); Jeanne C. Cyriaque, Secretary (GA); and Ralph B. Johnson, Treasurer (FL).

The following Standing Committees were established:

- Fiduciary Partnership – Commissioner John H. Haley, Chair
- General Management Plan – Commissioner Marquetta L. Goodwine, Chair
- Marketing – Commissioner Glenda Simmons-Jenkins, Chair
- Resource Development – Commissioner Althea N. Sumpter, Chair

The following General Management Plan Subcommittees also were established:

- Criteria
- Inventory – Commissioner Nichole Green, Chair
- Public Involvement

July 15–16, 2008	The Commission, at its meeting at the Charles Pinckney National Historic Site, Mount Pleasant, SC, participated with Denver Service Center in a technical assistance meeting to discuss the requirements of the legislation, public involvement strategies, National Environmental Policy Act compliance, data needs, etc.
August 14–15, 2008	The Commission, at its meeting in Wilmington, NC, participated with Denver Service Center in a technical assistance workshop focused on specific needs for the planning effort, including resource inventory, business plan, implementation plan and interpretation plan, as well as early implementation activities.
September 17–18, 2008	The Commission, at its meeting in Darien and Sapelo Island, GA, constructed the initial draft of the Corridor’s Vision, Mission, and Goals, and decided to incorporate in the state of South Carolina and file certificates to conduct business in the other three states. Commissioner Nichole Green volunteered to chair a subcommittee to work on the primary interpretive themes.
September 26, 2008	The Commission became incorporated in the state of South Carolina.
February 20, 2009	The Commission, at its meeting in Jacksonville, FL, formed the Staffing Committee consisting of Commissioners Charles Hall (Chair), Antoinette Jackson, and Ralph Johnson. The superintendents of several NPS units within the Corridor attended the meeting, along with the Southeast Regional Director. From February 19 – August 5, the General Management Plan Committee and Public Involvement Subcommittee officiated at 21 Public Scoping Meetings throughout the Corridor.
March 19–20, 2009	Commissioner Antoinette Jackson met with Denver Service Center staff to discuss the roles of DSC team members on the project.
May 15, 2009	The Commission, at its meeting in Georgetown, SC, approved the recommendations of the Bylaws Committee.
July 17, 2009	The Commission, at its meeting in Wilmington, NC, approved the Marketing and Resource Committees’ development of a Partner Packet and recommendation to send mail outs to 100 potential partners, requesting their involvement and to meet with them for a face-to-face meeting. Recipients were: each state’s congressional delegation; federal agency officials; the governors of the four states; state cabinet members and high-ranking state officials, county and town administrators, mayors, and regional, county, and local planning directors; representatives from convention and visitor bureaus; and chambers of commerce. The Commission approved the Executive Committee’s appointment of Commissioner Ronald Daise as Chair of the Marketing Committee, upon the resignation from the Commission of Commissioner Glenda Simmons-Jenkins.

From April 9 – May 3, 2009, the Commission held four (4) face-to-face workshops with potential partners in FL, SC, NC, and GA.

September 29–
October 1, 2009

The Executive Committee met with Denver Service Center in Denver, CO to discuss the plan's schedule, budget, and scope. Public comment analysis was reviewed and NEPA requirements were discussed, including ideas for preliminary alternatives. Key elements of the plan, such as boundary adjustments, partnerships, and coastal heritage center(s) were also on the agenda for discussion.

October 23, 2009

The Commission, at its meeting in Savannah, GA, gave and listened to a variety of reports on various projects and initiatives related to the Corridor, including the report by Executive Committee members and participants who attended the workshop in Denver, CO.

February 19, 2010

The Commission, at its meeting in St. Augustine, FL, approved the Marketing Committee's report to disseminate 50 upper tier mail-outs about partnerships to government officials.

Following the Nominating Committee's recommendation of candidates, the Commission re-elected the following Executive Committee members at the Commission meeting in St. Augustine, FL: Emory S. Campbell, Chair (SC); Eulis A. Willis, Vice Chair (NC); Ralph B. Johnson, Treasurer (FL); and it elected Charles H. Hall, Secretary (GA).

The following Issue-Specific Subcommittees were established: Boundary, Coastal Heritage Centers, and Partner Packet/Partnership.

Chairman Campbell and NPS Community Partnership Specialist Allen reported that the Commission, National Park Service, and Denver Service Center, Planning Division signed a Project Agreement for the Denver Service Center, Planning Division to develop the Corridor's Management Plan.

May 20, 2010

The Commission, at its meeting in Charleston, SC, formally recognized the following as "Former Commission Members": Deborah L. Mack, GA; William Jefferson, FL; and Glenda Simmons-Jenkins, FL.

The Commission approved the Boundary Committee's recommendation to include Pender County, NC, which was included in the NPS *Lowcountry Gullah Special Resource Study*, as well as St. Johns County, FL due to its historical and current connections to Gullah Geechee history, culture and people. The Boundary Committee recommended that this be included in the developing Management Plan. The Boundary Committee reiterated that the boundary does not change until the plan is signed by the secretary of the interior. It also proposed that no other territory be added to the Corridor in the future and that the boundaries of the Corridor be fixed.

The Nominating Committee presented recommendations for a process by which to solicit new members of the Commission. A decision was made to

consider conversion of alternates into commissioners before looking for individuals who had not previously been involved with the Commission.

August 13, 2010

The Commission, at its meeting in Southport, NC, approved the recommendations of the Marketing Committee and Partner Packet / Partnership Subcommittee to:

1. authorize the “Preliminary Alternatives” Newsletter draft for 1,000 mail outs throughout the Corridor on September 20, 2010;
2. alter the Partnership Outreach strategy by sending Partner Packets to local government offices via PDF instead of mail outs; and
3. include copy revisions that had been voiced by attendees at each statewide Partnership meeting.

The Commission also approved the recommendation of the Coastal Heritage Center Subcommittee regarding the Coastal Heritage Center Decision Criteria.

November 19, 2010

The Commission, at its meeting in Brunswick, GA, selected the Preferred Alternative upon an assessment of public opinion. Following the selection, the following Issue-Specific Subcommittees were established: Interpretation Plan, Implementation, Management Plan Review, and Public Statement Policy.

The Commission approved the Partnership Subcommittee’s recommendation to work with DSC for the next two to three months to finalize the Preferred Alternative and to develop strategies to continue reaching out to partners in a strategic manner to build critical relationships needed to implement the management plan.

The Commission approved the recommendation of the Fiduciary Committee to continue procuring a fiscal agent.

February 10, 2011

Members of the Interpretation Plan Committee, along with other commissioners who assisted in drafting the primary interpretive themes of the Corridor, met with Melisaa English-Rias, Interpretative Specialist for the NPS Southeast Regional Office, to discuss the primary interpretive themes she drafted.

February 11, 2011

The Commission, at its meeting in Jacksonville, FL, approved the Report on Refining and Finalizing the Preferred Alternative, submitted by Partnership Subcommittee Co-chairs: Commissioner Althea N. Sumpter, Resource Development, Chair ; and Commissioner Ronald Daise, Marketing, Chair.

The Fiduciary Committee was authorized to establish conversation/negotiations for the purpose of securing a fiscal agent/fiscal sponsorship for the Commission.

The Commission approved the Nominating Committee’s/Staffing Committee’s recommendation of names of prospective citizens to fill

vacancies of Commission members. The names subsequently were submitted to the U.S. Secretary of the Interior for approval.

During Executive Session, the Commission approved the establishment of a Web Design Committee.

May 27, 2011

The Commission, at its meeting in Bluffton, SC, approved the Implementation Plan Committee's recommendations to:

1. focus implementation efforts on three interdependent pillars: education, economic development, and documentation and preservation;
2. establish the Corridor Organization Chart; and
3. develop partnerships through proposed Partner, Partner Site, and Stakeholder applications.

The Commission also approved the Public Statement Policy document prepared by the Public Statement Committee.

The Commission was introduced to the Web site design and structure created by an advanced class of web designers from The Art Institute of Atlanta, under the supervision of the Web Design Committee. Afterward, the Commission approved the Web Design Committee's report that the Commission's Web site, www.gullahgeecheecorridor.org, was almost completed, was available online, and would be ready to launch officially in the immediate future.

July 21, 2011

A Draft Management Plan was distributed to the Management Plan Review Committee for its review and comment. The comment period lasted until August 7, 2011.

August 19, 2011

Following a number of conference calls to address comments by the Management Plan Review Committee, a revised Draft Management Plan was distributed to all Commission members, National Heritage Area Program staff, and superintendents of national parks within the Corridor at or immediately following the quarterly business meeting in Burgaw, NC. The full Commission review period closed on September 23, 2011.

September 20, 2011

The following Management Plan Review Committee members formed subcommittees to draft and edit revised Draft Management Plan documents, which subsequently were approved by the full Management Plan Review Committee:

- “Contemporary Events of Significance” – Commissioner Ronald Daise
- “Who Are Gullah Geechee People?” – Commissioner J. Herman Blake
- “Folk Life and Traditions” – Commissioners Althea N. Sumpter and Ronald Daise
- “Heirs’ Property” – Commissioners Marquetta L. Goodwine and Willie Heyward
- “Heritage Tourism” – Commissioner Antoinette Jackson

- “Historical Overview of the Gullah Geechee People and Culture” – Commissioners John H. Haley and Anthony Dixon
- “Language and Oral Traditions” – Commissioner David B. Frank
- “Letter of Support from SC NHA and Alliance of NHAs” – NPS Partnership Specialist Michael Allen
- Photo Editor – Commissioner Althea N. Sumpter
- “Resource Inventory” – Commissioners John H. Haley (NC), Marquette L. Goodwine (SC), Althea N. Sumpter (GA), and Antoinette Jackson (FL)
- “Significance Statements” – Management Plan Review Committee
- “Socioeconomic Conditions” – Chairman Emory S. Campbell and Commissioner J. Herman Blake

- November 11, 2011 The Commission, at its meeting in Midway, GA, decided to pursue an agreement with the Gullah Geechee Sustaining Fund to serve as the Commission’s fiscal agent.
- The Commission granted authority to the Management Plan Review Committee to grant final approval of documents in the Draft Management Plan before and after public review. The Commission approved Commissioner Ronald Daise as Chair of the Management Review Committee.
- February 23–24, 2012 The Commission elected Ronald Daise as Chair-Elect and Althea Natalga Sumpter as Vice Chair-Elect of the Gullah Geechee Cultural Heritage Corridor Commission.
- June 1, 2012 The Commission, based on the recommendation of the Management Plan Review Committee, approved the management plan for public distribution.

PREPARERS AND CONSULTANTS

PREPARERS

NPS Denver Service Center, Planning Division

Andrew Coburn, Project Manager / Community Planner; B.A. Economics; B.S. Business Administration; Master of Urban and Regional Planning, Land use and Environmental Planning; Master of Public Administration; 4 years with the National Park Service.

Mary McVeigh, Project Manager/ Community Planner (2008-2009); B.A. Technical Communications; 22 years with the National Park Service.

Patrick Kenney, Former Branch Chief; B.S. Zoology, 23 years of experience, 20 years with the National Park Service (2008–2011).

Aaron Gagne, Branch Chief; B.Sc. in Environmental Planning; Master of City and Regional Planning; US Navy Supply Corps School; Naval War College. 19 years of experience, 2 years with the National Park Service.

Tracy Atkins, PE, PMP, Project Manager / Community Planner; B.S. Architectural Engineering; M.S. Construction Engineering and Management; M.S. Community and Regional Planning. Registered Civil Engineer, Certified Project Manager; 22 years of experience, 4 years with the National Park Service.

Sarah Bodo, Community Planner; B.S. Finance; Master of Urban and Regional Planning; 5 years with the National Park Service.

Carrie Miller, Cultural Resource Specialist; B.S. Human Ecology; M. Arh. Architectural History; 10 years of experience, 2 years with the National Park Service.

Christina Miller, Natural Resource Specialist; B.S. in Biology, B.A. in Geography, M.A.S. in Environmental Policy and Management (for Natural Resource Management); 8 years with the National Park Service.

Nancy Doucette, Visitor Use Management Specialist (SCEP); A.S. in Travel-Tourism Management; B.S. in Hospitality Management; 2 years with the National Park Service.

Justin Henderson, Community Planner (SCEP); B.A. Anthropology; Master in Anthropology and Museum Studies; Master of Urban and Regional Planning; Master of Historic Preservation; 1.5 years with the National Park Service.

Susan McPartland, Visitor Use Management Specialist; B.A. Environmental Studies and Art; Master of Social Science; Society & the Environment; 3.5 years with the National Park Service.

Technical and Publication Services

Jim Corbett, Publications Supervisor; 27 years with the Government Printing Office, 7 years with the National Park Service.

Nell Blodgett, GIS Program Lead, B.A. Geography; M.S. GIS Science; 8 years with the National Park Service.

Laura Pernice, GIS Specialist (SCEP); B.A. Geography; GIS Certificate; M.S. of GIS (in progress); 1 year with the National Park Service.

Phil Thys, Visual Information Specialist, B.A. Marketing Management, A.A. Graphic Arts Communications; 27 years of experience, 20 with the National Park Service.

Ángel López, Visual Information Specialist (SCEP). BFA, Communication Design (in progress); 6 years of experience, 1 year with the National Park Service.

Wanda Gray Lafferty, Editor; Paralegal; 2 years undergrad education in business and communications; 34 years of experience, 11 years with National Park Service documents.
Melissa Vagi, Editor; B.A. Spanish; M.J. Journalism; 4 years experience, less than 1 year with National Park Service documents.
John Paul Jones, Visual Information Specialist (SCEP); B.S. Communications; B.S. Graphic Design (in progress); 1 year with the National Park Service.

Other Advisory and Administrative Services

Ann Van Huizen, Outdoor Recreation Planner
Jody Quintana, Administrative Support Assistant
Christina Hirschfeld, Youth Intern Program Participant

CONSULTANTS

NPS Sites within the Corridor

Moore's Creek National Battlefield

Tyrone Brandyburg, Superintendent

Fort Sumter National Monument; Charles Pinckney National Historic Site

Tim Stone, Superintendent
Bob Dodson, Former Superintendent
Michael Allen, NPS Community Partnership Specialist

Fort Pulaski National Monument

Randy Wester, Superintendent

Fort Federica National Monument

Mary Beth Wester, Superintendent

Cumberland Island National Seashore

Fred Boyles, Superintendent

Timucuan Ecological & Historic Preserve; Fort Caroline National Memorial

Barbara Goodman, Superintendent

Castillo De San Marcos National Monument; Fort Matanzas National Monument

Gordie Wilson, Superintendent

NPS Southeast Regional Office

Chris Abbett, Assistant Regional Director, partnerships
K. Lynn Berry, National Heritage Area Program Coordinator
Patty Wissinger, Former National Heritage Area Program Coordinator
Melissa English-Rias, Interpretive Specialist

NPS National Heritage Area Program Office

Martha Raymond, National Heritage Area Program Coordinator
Heather Scotten, Assistant National Heritage Area Program Coordinator
Katie Callahan Durcan, Assistant National Heritage Area Program Coordinator
Dwayne Rax, Intern, 2008

NPS Heritage Documentation Programs, Cultural Resource Geographic Information Systems Facility

Richard O'Connor, Chief
Jami Babb, Historian
John Knoerl, Program Manager
Deidre McCarthy, Historian
James Stein, GIS Specialist

NPS Rivers, Trails, and Conservation Assistance Program

Le'alani Schaumburg, Community Planner

OTHER ADMINISTRATIVE SERVICES

Gullah Geechee Cultural Heritage Corridor Commission

Zelda Grant, Administrative / Creative Assistant

APPENDICES

The enclosed CD contains the Gullah Geechee Cultural Heritage Corridor Management Plan Appendices.

Appendix A – *Designating Law*: Includes the law that designated the Gullah Geechee Cultural Heritage Corridor and established the requirements for the management plan.

Appendix B – *Commission Bylaws*: Includes the adopted bylaws of the Gullah Geechee Cultural Heritage Corridor Commission which serve as the operating procedures of the Commission.

Appendix C – *Resource Inventory*: Includes definitions of inventory categories and identifies the many tangible resources that support the intangible primary interpretive themes of the Corridor.

Appendix D – *Boundary*: Includes resolutions supporting the inclusion of Pender County and St. Johns County in the Gullah Geechee Cultural Heritage Corridor as well as a letter of support from the former Governor of Florida. Additional historical information justifying the inclusion of St. Johns County in the Corridor is also included.

Appendix E – *Partner Applications*: Includes the partnership applications forms, as well as a detailed explanation of how to complete them.

Appendix F – *Early Implementation*: Includes a position statement and letter to the president of the College of Charleston, along with a news article related to the Commission's assistance in preserving McLeod Plantation on James Island, South Carolina. Also included are a letter to the secretaries of the interior and agriculture, a letter to the Charleston County Council chairman and corresponding resolution, a letter of support to the supervisor of Francis Marion and Sumter National Forests, and a letter of support for the Harris Neck Land Trust's proposal to acquire land in northeast McIntosh County, Georgia.

Appendix G – *Consultation Letters*: Includes letters sent to Native American tribes, State Historic Preservation Officers, U.S. Fish and Wildlife Service, and each state's department of natural resources or equivalent.

Appendix H – *Major River Basins & Threatened & Endangered Species*: Includes listings and descriptions of the major river basins in the Corridor. A list of threatened and endangered species in the Corridor is provided as a reference.

Appendix I – *Economic Impact of Tourism*: Includes tourism and economic impact statistics for various geographies and locations. Also includes a brief summary of the methodology for gathering and analyzing information presented in the Socioeconomic Conditions section.

Appendix J – *List of Islands & Festivals*: Includes a list of Sea Islands and islands in tidal areas, as well as local and regional Gullah Geechee festivals and special events.

Appendix K – *Potential Partners and Related Plans*: Includes a preliminary list of potential partners, however, given the number of potential partners that the Commission could work with, not all are listed. Known plans that are related to the Corridor are noted.

Appendix L – *Recreational and Scenic Resources*: Includes a brief overview of recreational and scenic resources in the Corridor, along with specific examples.

Appendix M– *Bibliography Including Selected References and Additional Sources of Information about Gullah Geechee History, Culture, and People*: Includes all selected references that are printed in the document as well as other sources of information (such as books, journal articles, dissertations, films, etc.) about Gullah Geechee history, culture, and people.

Appendix N – *Public Comment Reports*: Includes all comments received from Newsletter 1 in February 2009 and Newsletter 2 in September 2010, and letters received in response to Newsletter 2.

SELECTED REFERENCES

Advisory Council on Historic Preservation

- 2003 *Executive Order 13287, "Preserve America" Section 3: Improving Federal Agency Planning and Accountability*, Report of the National Park Service (Electronic 11 Document), accessed December 21, 2011, <http://www.achp.gov/section3/index.html>.

American Trails

- 2010 American Trails Web site accessed December 21, 2011, <http://www.americantrails.org/nationalrecreationtrails/stateNRT/SCnrt.html>.

Avery Research Center for African American History and Culture

- 2011 Avery Research Center Web site, accessed October 6, 2011, <http://avery.cofc.edu/>.
2008 "About Avery," accessed September 1, 2010, http://avery.cofc.edu/about_avery.htm.

Baird, Keith E. and Mary A. Twining

- 1994 "Names and Naming in the Sea Islands," in *The Crucible of Carolina: Essays in the Development of Gullah Language and Culture*, edited by Michael Montgomery, 23–37. Athens: University of Georgia Press.

Ball, Edward

- 1998 *Slaves in the Family*. New York: Farrar, Straus, and Giroux.

Bendell, B.M., and North Carolina Estuarine Biological and Physical Processes Work Group

- 2006 "Recommendations for Appropriate Shoreline Stabilization Methods for the Different North Carolina Estuarine Shoreline Types." NC Division of Coastal Management.

Berkley County Chamber of Commerce

- 2010 Berkley County Chamber of Commerce Web site, accessed December 21, 2011, www.bcoc.com (site discontinued).

Calhoun Times

- 2010 "Friends Announces Economic Impact of State Park System." Calhoun, GA, accessed March 17, 2010, http://www.calhountimes.com/view/full_story/6742878/article-Friends-announces-economic-impact-of-state-park-system-?instance=home_local_news.

Cape Fear Coast CVB

- 2010 Web site, accessed on July 7, 2010, www.capefearcoast.com

Cape Fear Museum

- 2008 "Cape Fear Museum," accessed September 23, 2010, <http://www.capefearmuseum.com/index.php>.

Cassidy, Frederic G.

- 1986 "Some Similarities Between Gullah and Caribbean Creoles," in *Language Varieties in the South: Perspectives in Black and White*, edited by Michael Montgomery and Guy Bailey, 30–37. Tuscaloosa: University of Alabama Press.
- 1994 "Gullah and the Caribbean Connection," in *The Crucible of Carolina: Essays in the Development of Gullah Language and Culture*, edited by Michael Montgomery, 16–22. Athens: University of Georgia Press.

Center for Heirs' Property Preservation

- 2011 "Learn: What is Heirs' Property," accessed March 16, 2012, <http://www.heirsproperty.org/learn/?id=565>.

Chambers, Erve

- 2006 "Heritage Matters: Heritage, Culture, History, and Chesapeake Bay." College Park: A Maryland Sea Grant Publication.
- 2010 *Native Tours—The Anthropology of Travel and Tourism*. Long Grove, IL: Waveland Press.

Charleston Convention and Visitors Bureau

- 2010 Charleston Convention and Visitors Bureau Web site, accessed January 19, 2012, www.charlestoncvb.com.

Charleston County, South Carolina Online

- 2011 Charleston County, South Carolina Online, "History" Web site, accessed August 2011, <http://www.charlestoncounty.org/history.htm>.

Colgan, Charles S.

- 2007 "A Guide to the Measurement of the Market Data for the Ocean and Coastal Economy in the National Ocean Economics Program." National Ocean Economics Program Web site, accessed September 2010, <http://www.oceaneconomics.org/Market/>.

Copeland, Mary Shawn

- 2007 "My Soul is A Witness: African-American Women's Spirituality (review)." *Spiritus: A Journal of Christian Spirituality* 7(2):223–225.

Creel, Margaret Washington

- 1991 "Gullah Attitudes Toward Life and Death." *Africanisms in American Culture*, ed. Joseph E. Holloway, 68–92. Bloomington: Indiana University Press.

Cunningham, Irma Aloyce Ewing

- 1970 "A Syntactic Analysis of Sea Island Creole [Gullah]." Ph.D. dissertation, University of Michigan.

Cyriaque, Jeanne

- 2011 Personal communication with Andrew Coburn, December 15, 2011.
- 2010 Personal communication with Andrew Coburn, September 29, 2010.

- Daise, Ronald
2007 *Gullah Branches, West African Roots*. Orangeburg: Sandlapper Publishing, Inc.
- Daly, J.
2003 "Heritage Areas: Connecting People to their Place and History." *Forum Journal* 17(4).
- Dixon, Anthony, E.
2010 Personal communication with Andrew Coburn, February 10, 2010.
- Dorchester Chamber of Commerce
2010 Dorchester Chamber of Commerce Web site, accessed January 19, 2012, www.summervilletoursim.com.
- Drake, St. Clair
1990 *Black Folk Here and There: An Essay in History and Anthropology*, Vol. 1. Los Angeles: University of California Center for Afro-American Studies.
- Eltis, David
2000 *The Rise of African Slavery in the Americas*. Cambridge, U.K.: Cambridge University Press.
- Endangered Species Coalition
2010 "Flatwoods Salamander," accessed January 19, 2012, <http://www.stopextinction.org/top10/ahs/152-flatwoods-salamander.html>.
- Evans, W. McKee
1966 *Ballots and Fence Rails*. Chapel Hill: University of North Carolina Press.
- Excelsior Cultural Center
2010 Excelsior Cultural Center Web site, accessed January 19, 2012, <http://www.excelsiorculturalcenter.com/>.
- Ferguson, Leland
1992 *Uncommon Ground: Archaeology and Early African America, 1650-1800*. Washington, DC: Smithsonian Institution Press.
- Florida Department of Environmental Protection (FLDEP)
2010a "Nassau-St. Marys River Watershed," accessed December 21, 2011, <http://www.protectingourwater.org/watersheds/map/nassau>.
2010b "Lower St. Johns River Watershed," accessed December 21, 2011, http://www.protectingourwater.org/watersheds/map/lower_st_johns.
2010c "Upper East Coast River Basin," accessed December 21, 2011, http://www.protectingourwater.org/watersheds/map/upper_east_coast.
- Florida Department of Revenue
2011 Web site accessed December 21, 2011, http://dor.myflorida.com/dor/taxes/colls_from_7_2003.html.

Florida Division of Historical Resources

- 2010a "Florida Historical Markers Program," accessed August 30, 2010, <http://www.flheritage.com/preservation/markers/markers.cfm?ID=st>.
- 2010b "Florida Historical Markers Program," accessed August 30, 2010, <http://www.flheritage.com/preservation/markers/markers.cfm?ID=nassau>.

Florida Fish and Wildlife Conservation Commission (FWC)

- 2010 "Red-cockaded Woodpecker," accessed December 21, 2011, <http://myfwc.com/WILDLIFEHABITATS/BirdSpecies_RedCockadedWoodpecker.htm>.

Frank, David

- 2011 Personal communication to Andrew Coburn, NPS Project Manager/Community Planner, April 28, 2011, regarding Gullah language as an oral tradition and the nature of its written form to date.
- 2007 "Three Irregular Verbs in Gullah," in *Synchronic and Diachronic Perspectives on Contact Languages*, edited by Magnus Huber and Viveka Velupillai. Creole Language Library 32. Amsterdam / Philadelphia: John Benjamins, 159–173.
- 2007 "We Don't Speak a Real Language: Creoles as Misunderstood and Endangered Languages." Paper presented at a Symposium on Endangered Languages at the National Museum of Language in College Park, MD, accessed December 21, 2011, www.saintluciancreole.org/workpapers/creoles_as_misunderstood.pdf.

Garner, Jeffrey T., and John A. Fridell

- 1997 "Recovery Plan for Anthony's Riversnail," prepared for the Southeast Region, U.S. Fish and Wildlife Service, Atlanta, accessed December 21, 2011, http://ecos.fws.gov/docs/recovery_plan/970813.pdf.

Georgetown County Chamber of Commerce

- 2010 Web site, accessed December 21, 2011, www.georgetownchamber.com.

Georgia Department of Economic Development

- 2009a "Georgia Economic Impact Report Tourism Report 2009," accessed December 21, 2011, <http://www.georgia.org/GeorgiaIndustries/Tourism/Pages/IndustryResearch.aspx#economic>
- 2009b "2008 Travel Economic Impact on Georgia State, Counties and Regions," prepared by the U.S. Travel Association, Washington, DC, accessed December 21, 2011, [http://www.georgia.org/SiteCollectionDocuments/Industries/Tourism/IndustryResearch/State%20Economic%20Report/2008%20GA%20Region%20Repot%20\(Preliminary\).pdf](http://www.georgia.org/SiteCollectionDocuments/Industries/Tourism/IndustryResearch/State%20Economic%20Report/2008%20GA%20Region%20Repot%20(Preliminary).pdf)

Georgia Department of Natural Resources

- n.d. Web site accessed December 21, 2011, <http://www.georgiawildlife.com/node/1356>.

Georgia River Network

- 2010 "River Basin Fact Sheets," accessed December 21, 2011, www.garivers.org/garivers/river_info.html.

- Georgia State Parks and Historic Sites
 2011 Information about state parks accessed December 21, 2011, <http://www.gastateparks.org/parks/>.
 2008 Georgia State Comprehensive Outdoor Recreation Plan 2008–2013, accessed December 21, 2011, <http://www.gastateparks.org/item/132975>.
- Godwin, John L.
 2000 *Black Wilmington and the North Carolina Way: Portrait of a Community in the Era of Civil Rights Protest*. Lanham: University Press of America.
- Goodman, Blair E. and Kally L. McCormick
 2010 “Roads and Reeds: Navigating NEPA Through the Historic Sweetgrass Basket Making Corridor in Mount Pleasant, SC.” Oral presentation, Collingswood, NJ: National Association of Environmental Professionals.
- Governors’ South Atlantic Alliance
 2010 “Draft Action Plan,” accessed September 2010, <http://www.southatlanticalliance.org/>.
- Hampton County, South Carolina.
 2011 “Historical Profile of Hampton County,” accessed August 2011, <http://www.hamptoncountysc.org/index.aspx?NID=145>.
- Hancock, Ian F.
 1994 “Componentiality and the Creole Matrix: The Southwest English Contribution,” in *The Crucible of Carolina: Essays in the Development of Gullah Language and Culture*, ed. Michael Montgomery, 95–114. Athens: University of Georgia Press, 95–114.
 1980 “Gullah and Barbadian: Origins and Relationships.” *American Speech* 55:17–35.
 1971 “West Africa and the Atlantic Creoles,” in *The English Language in West Africa*, edited by John J. Spencer. London: Longman.
- Hilliard, Sam B.
 1978 “Antebellum Tidewater Rice Culture in South Carolina and Georgia,” in *European Settlement and Development in North America: Essays on Geographical Change in Honour and Memory of Andrew Hill Clark*, ed. James R. Gibson, 95–115. Toronto: University of Toronto Press.
- Hopkins, Tometro
 1994 “Variation in the Use of the Auxiliary Verb Da in Contemporary Gullah,” in *The Crucible of Carolina: Essays in the Development of Gullah Language and Culture*, ed. Michael Montgomery, 60–86. Athens: University of Georgia Press.
 1992 “Issues in the Study of Afro-Creoles: Afro-Cuban and Gullah.” (PhD diss., Indiana University, 1992).
- Intergovernmental Panel on Climate Change (IPCC)
 2007 “Climate Change 2007: The Physical Science Basis. Contribution of Working Group I to the Fourth Assessment Report of the Intergovernmental Panel on Climate Change.” edited by S. Solomon, D. Qin, M. Manning, Z. Chen, M. Marquis, K. B. Averty, M. Tignor, and H. L. Miller. Cambridge University Press, Cambridge, U.K.

Jackson, Antoinette T.

- 2011 "Shattering Slave Life Portrayals: Uncovering Subjugated Knowledge in U.S. Plantation Sites in South Carolina and Florida." *American Anthropologist* 113(3):448–462.
- 2008a "Plantations," in *Encyclopedia of Race and Racism*, ed. John H. Moore. Detroit: McMillan Reference USA/Thomson Gale.
- 2008b "Imagining Jehossee Island Rice Plantation Today." *International Journal of Heritage Studies* 14(2):131–155.
- 2004 "African Communities in Southeast Coastal Plantation Spaces in America. Anthropology." (PhD diss., University of Florida, Gainesville).
- 2003 "Africans at Snee Farm Plantation: Informing Representations of Plantation Life at a National Historic Site," in *Signifying Serpents and Mardi Gras Runners: Representing Identity in Selected Souths*, ed Celeste Ray and Luke Eric Lassiter, 93–109. Athens: University of Georgia Press.

Jackson, Claude V

- 2008 *The Big Book of the Cape Fear River*, ed. Jack E. Fryar Jr. Wilmington: Dram Tree Books.

Jones-Jackson, Patricia Ann

- 1983 "Contemporary Gullah Speech: Some Persistent Linguistic Features." *Journal of Black Studies* 13(3):289–303.
- 1978 "The Status of Gullah: An Investigation of Convergent Processes." (PhD diss., University of Michigan).

Journey through Hallowed Ground Partnership (JHGP)

- 2011 The Of the Student, By the Student, for the Student Service Learning Project Web site, accessed June 2011, <http://www.hallowedground.org/Education/Service-Learning-Programs>.

Joyner, Charles

- 1984 *Down by the Riverside: A South Carolina Slave Community*. Urbana: University of Illinois Press.

Judah, J. Cristy

- 2009 *The Two Faces of Dixie: Politicians, Plantations and Slaves*. Brunswick County, NC: Coastal Books.

Lee, Lawrence

- 1965 *The Lower Cape Fear in Colonial Days*. Chapel Hill, NC: University of North Carolina Press.

Littlefield, Daniel C.

- 1995 "Rice and the Making of South Carolina: An Introductory Essay." Columbia: South Carolina Department of Archives and History.
- 1981 *Rice and Slaves: Ethnicity and the Slave Trade in Colonial South Carolina*. Baton Rouge, LA: Louisiana State University Press, 1981; reprint, Chicago: IL, University of Illinois Press, 1991.

- Locke, John
1669 "The Fundamental Constitutions of Carolina (1669)," LEARN NC, accessed January 19, 2012, <http://www.learnnc.org/lp/pdf/the-fundamental-constitutions-p1657.pdf>.
- Low Country Open Land Trust
2006 "Santee River Basin," Web site accessed August 30, 2010, <http://www.lolt.org/landprotection/santee-basin>.
- Massally, Amadu
2010 "National Heritage/Tourism—Gullah Visits to Sierra Leone" (pers. e-mail comm. August 2, 2010, 1:13 p.m.)
- Mbiti, John S.
1989 *African Religions and Philosophy*, 2nd Ed. Oxford, U.K.: Heinemann Educational Books.
- McNab, W. Henry, and Peter E. Avers
1994 "Ecological Subregions of the United States." Prepared for the U.S. Forest Service, U.S. Department of Agriculture, <http://www.fs.fed.us/land/pubs/ecoregions/index.html>.
- McPherson, James M.
1965 *The Negro's Civil War*, New York: Random House.
- McWhorter, John H.
1995 "Sisters under the Skin: A Case of Genetic Relationship between the Atlantic English-based Creoles." *Journal of Pidgin and Creole Languages* 10:289–333.
- Michels, Margaret Ann
2011 "Expanding into History – Sweetgrass Basket Stands." *Mount Pleasant Magazine*, <http://mountpleasantmagazine.com/2011/places/expanding-into-history-sweetgrass-basket-stands/>.
- Mille, Katherine Wylly
1990 "A Historical Analysis of Tense-Mood-Aspect in Gullah Creole: A Case of Stable Variation." (PhD dissertation, University of South Carolina).
- Morgan, Philip D.
2011 "Introduction". *African American Life in the Georgia Lowcountry: The Atlantic World and the Gullah Geechee*. Athens: University of Georgia Press, 10.
- Mufwene, Salikoko S.
1997 "The Ecology of Gullah's Survival." *American Speech* 72:69–83.
- Museum of African Art, New York
2010 "Grass Roots: African Origins of an American Art." Traveling exhibit, June 23–November 28, 2010. Avery Research Center for African American History and Culture at the College of Charleston, McKissick Museum at the University of South Carolina and the Sweetgrass Cultural Arts Festival Association.

Nalty, Bernard C.

- 1986 *Strength for the Fight: A History of Black Americans in the Military*. New York: Free Press.

National Audubon Society

- 2010 "Piping Plover," accessed December 21, 2011, <http://web1.audubon.org/science/species/watchlist/profile.php?speciesCode=pippl>.

National History Education Clearinghouse

- 2011 Web site accessed June 2011, <http://teachinghistory.org/>.

National Marine Fisheries Service (NMFS), National Oceanic and Atmospheric Administration

- 2010a "Sperm Whales," accessed December 21, 2011, <http://www.nmfs.noaa.gov/pr/species/mammals/cetaceans/spermwhale.htm>.
- 2010b "Caribbean Monk Seal," accessed December 21, 2011, <http://www.nmfs.noaa.gov/pr/species/mammals/pinnipeds/caribbeanmonkseal.htm>.
- 2010c "Shortnose Sturgeon," accessed December 21, 2011, <http://www.nmfs.noaa.gov/pr/species/fish/shortnosesturgeon.htm>.
- 2010d "Smalltooth Sawfish," accessed December 21, 2011, <http://www.nmfs.noaa.gov/pr/species/fish/smalltoothsawfish.htm>.
- 2010e "Marine Turtles," accessed December 21, 2011, <http://www.nmfs.noaa.gov/pr/species/turtles/>.

National Park Service (NPS)

- 2011 "Visitation Levels," accessed January 19, 2012, <http://www.nature.nps.gov/>.
- 2011b "Draft Management Plan for the Gullah/Geechee Cultural Heritage Corridor, from Brian Loadholtz on behalf of Loadholtz, Barbara Goodman, and John Whitehurst." (pers. e-mail comm. to Michael Allen, NPS Community Partnership Specialist, September 23, 2011, regarding comments on the draft).
- 2010a "Archaeology at Kingsley Plantation," accessed August 30, 2010, http://www.nps.gov/timu/historyculture/kp_archaeology.htm.
- 2010b "Hofwyl-Broadfield Plantation State Historic Site," accessed August 30, 2010, <http://www.nps.gov/history/goldcrest/sites/hofwyl.htm>.
- 2005 "Low Country Gullah Culture, Special Resource Study and Final Environmental Impact Statement." Southeast Regional Office, Planning and Compliance Division.
- 2002 NPS-28: *Cultural Resource Management Guideline*, Chapter 8: Management of Historic and Prehistoric Structures. http://www.cr.nps.gov/history/online_books/nps28/28chap8.htm.
- 1996 Along the Georgia-Florida Coast, accessed December 21, 2011, <http://www.nps.gov/history/nr/travel/geo-flor/g-fintro.htm>
- 1994 "Historical Overview: The Life of Charles Pinckney Snee Farm – History of a Landscape." Prepared by staff of Charles Pinckney National Historic Site, staff of Fort Sumter National Monument, Division of Planning and Compliance, and Office of Cultural Resources – Southeast Regional Office.

- National State Auditors Association
 2004 "Best Practices in Carrying Out State Economic Development Efforts." Lexington, KY: National State Auditors Association, accessed January 19, 2012, http://www.nasact.org/nsaa/committees/performance/downloads/bestpractices/Economic_Development.pdf.
- National Wild and Scenic Rivers (WSR)
 2011 WSR Web site, accessed December 21, 2011, <http://www.rivers.gov>.
- National Wild Turkey Foundation (NWTf)
 2010 "Eastern Indigo Snake." accessed DATE, http://www.nwtf.org/NAWTMP/downloads/Literature/Eastern_Indigo_Snake.pdf.
- Natural Resources Conservation Service (NRCS), U.S. Department of Agriculture
 2010a "Distribution Maps of Dominant Soil Orders" and "Official Soil Series Descriptions," accessed December 21, 2011, <http://soils.usda.gov>.
 2010b "Soil Data Mart," accessed December 21, 2011, <http://SoilDataMart.nrcs.usda.gov>.
 2004 "Farmland Protection Policy Act," accessed December 21, 2011, www.nrcs.usda.gov/programs/fppa/pdf_files/7cfr658.pdf.
- Nichols, Patricia Causey
 1976 "Linguistic Change in Gullah: Sex, Age, and Mobility." (PhD diss., Stanford University).
- North Carolina Birding Trail
 2005 Web site, accessed DATE, <http://www.ncbirdingtrail.org/>.
- North Carolina Department of Coastal Management (NC DCM)
 2009 "North Carolina Beach and Inlet Management Plan," accessed September 2009, <http://dcm2.enr.state.nc.us/bimp.htm>.
- North Carolina Department of Commerce
 2010 Economic Impact – Visitor Spending, accessed January 19, 2012, <http://www.nccommerce.com/en/TourismServices/PromoteTravelAndTourismIndustry/TourismResearch/visitorspending.htm>.
 2010a General information, accessed January 21, 2012, <http://www.nccommerce.com/en/TourismServices/PromoteTravelAndTourismIndustry/>.
 2010b "Division of Tourism, Film and Development, 2009 North Carolina Annual Report," accessed January 21, 2012, <http://annualreport.visitnc.com/year-in-review/2009-results/>.
 2010c "The Economic Impact of Travel on North Carolina Counties, 2008" by US Travel Association accessed January 21, 2012, <http://www.nccommerce.com/en/TourismServices/PromoteTravelAndTourismIndustry/TourismResearch/visitorspending.htm>.
 2009 "Division of Tourism, Film and Development, 2008 North Carolina Regional Travel Report," accessed January 21, 2012, <http://www.nccommerce.com/NR/rdonlyres/62941F72-A743-4BA2-8343-74E65039C3EE/0/2008NorthCarolinaRegionalTravelSummary.pdf>

- North Carolina Department of Environment and Natural Resources (NCDEP)
- 2007 "Lumber River Basin," accessed January 21, 2012, www.eenorthcarolina.org/.../riverbasins/LumberRiverBasin.htm.
- 2002 "Cape Fear River Basin," accessed January 21, 2012, www.eenorthcarolina.org/public/.../riverbasins/capefear.150dpi.pdf.
- North Carolina Division of Parks and Recreation, State Parks
- 2010 State Park information, accessed January 21, 2012, <http://www.ncparks.gov/Visit/main.php>.
- 2009 "North Carolina Outdoor Recreation Plan 2009–2013," accessed January 21, 2012, <http://www.ncparks.gov/About/plans/scorp/main.php>.
- North Carolina Natural Heritage Program, Office of Conservation & Community Affairs
- 2010 "American Chaffseed," accessed January 21, 2012, <http://www.ncnhp.org/Images/73.pdf>.
- North Carolina Office of Environmental Education
- 2008 "North Carolina's Environmental Education Newsletter, Summer 2008, No. 131," accessed January 21, 2012, http://www.ee.enr.state.nc.us/newsandevents/newstips_summer_2008.html.
- North Carolina Office of State Archaeology
- 2010 "Fort Fisher: Facilities at Fort Fisher," accessed August 30, 2010, <http://www.nchistoricsites.org/fisher/Main.htm>.
- North Carolina State University (NCSU)
- 2010 "Cape Fear River Basin," accessed January 21, 2012, <http://www.water.ncsu.edu/capefear.html>.
- Oh, Chi-Ok, Anthony Dixon, and Jason Draper
- 2006 "Visitor Needs Assessment and Economic Analysis at South Carolina Beaches," Department of Parks, Recreation and Tourism Management, Clemson University, accessed January 21, 2012, <http://www.hehd.clemson.edu/PRTM/trmcenter/ocrm2006.pdf>.
- Opala, Joseph
- 2000 "The Gullah: Rice, Slavery, and the Sierra Leone-American Connection." U.S. National Park Service, Fort Sumter National Monument, Sullivan's Island, South Carolina.
- 1990 "The Gullahs Come Home." *West Africa* 25:2143.
- 1988 "Momoh Visits the Gullah." *West Africa* 31:1048.
- 1987 "The Gullah: Rice, Slavery, and the Sierra Leone-American Connection." Sierra Leone: USIS. <http://www.yale.edu/glc/gullah/index.htm>.
- Parrish, Lydia, O. Downes, C. Churchhill
- 1992 *Slave Songs of the Georgia Sea Islands* (Introduction by A. Rosenbaum). Athens: University of Georgia Press.

- Parsons, Elsie C.
1923 *Folk-Lore of the Sea Islands, South Carolina*. Cambridge, MA: American Folklore Society.
- Phelps, David S.
1983 “Archeology of the North Carolina Coast: Problems and Hypotheses,” in *The Prehistory of North Carolina: An Archaeological Symposium*, edited by Mark A. Mathias and Jeffrey J. Crow Raleigh: North Carolina Division of Archives.
- Poplar Grove Plantation
2010 “Poplar Grove Plantation,” accessed January 21, 2012, <http://www.poplargrove.com/>.
- Powell, William S., ed.
2006 *The Encyclopedia of North Carolina History*. Chapel Hill: University of North Carolina Press.
- Quarles, Benjamin
1988 *Black Mosaic: Essays in Afro-American History and Historiography*. Amherst: University of Massachusetts Press.
- Reaves, William M. and Beverly Tetterton, eds.
1998 *Strength Through Struggle: The Chronological and Historical Record of the African-American Community in Wilmington, North Carolina, 1865–1950*. Wilmington: New Hanover County Public Library.
- Richter, William L.
2004 *Historical Dictionary of the Civil War and Reconstruction*. Scarecrow Press, Lanham, MD.
- Robinson, Mike, and David Picard
2006 “Tourism, Culture and Sustainable Development,” UNESCO, Programme, “Culture, Tourism, Development,” Division of Cultural Policies and Intercultural Dialogue, Culture Sector. Paris: UNESCO.
- Rogers, George C. Jr.
1973 *A South Carolina Chronology 1497–1970*. Columbia: University of South Carolina Press.

1970 “The Georgetown Rice Planters on the Eve of the Civil War” *South Carolina History Illustrated* 1:24–33.
- Said, E.
1978 *Orientalism*. London, U.K.: Routledge & Kegan.
- Sapelo Island National Estuarine Research Reserve Center
2010 “Sapelo Island Visitor Center,” accessed August 30, 2010, <http://www.sapelonerr.org/visitorcenter.htm>.

- Schwalm, Leslie A.
1996 *A Hard Fight for We: Women's Transition from Slavery to Freedom in South Carolina*. Urbana/Chicago: University of Illinois Press.
- Sea Island Translation and Literacy Team
2005 *De Nyew Testament*. (The New Testament in Gullah Sea Island Creole with marginal text of the King James Version). New York: American Bible Society.
- Sherman, William T.
1865 Special Field Orders, No. 15, Headquarters Military Division of the Mississippi, 16 Jan. 1865, Orders & Circulars, ser. 44, Adjutant General's Office, Record Group 94, Washington, DC: National Archives Building.
- Singleton, Theresa. A., ed.
1985 *Archaeology of Slavery and Plantation Life: Studies in Historical Archaeology*. Orlando: Academic Press.
- Smith, Alice R. Huger
1936 *A Carolina Rice Plantation of the Fifties, 30 Paintings in Water Colour*. New York: William Morrow.
- Smith, John David, ed.
2002 *Black Soldiers in Blue*. Chapel Hill: University of North Carolina Press.
- Soergel, Matt
2011 "UF Archaeological Team Finds Six Human Burials at Kingsley Plantation." blog entry by Matt Soergel, Nov. 11, 2011, <http://m.jacksonville.com/news/metro/2011-11-10/story/uf-archaeological-team-finds-six-human-burials-kingsley-plantation>
- South Carolina Department of Archives and History
2011 "National Register Properties in South Carolina: Fish Haul Archaeological Site, Beaufort County," accessed January 23, 2012, <http://www.nationalregister.sc.gov/beaufort/S10817707033/index.htm>.
2010 "National Register Properties in South Carolina: Penn Center Historic District, Beaufort County (St. Helena Island)," accessed August 30, 2010, <http://www.nationalregister.sc.gov/beaufort/S10817707020/pages/S1081770702006.htm>.
2009 "African American Historic Places in South Carolina." Columbia: State Historic Preservation Office.
- South Carolina Department of Health and Environmental Control (SCDHEC)
2012 "Watersheds: Santee River Basin—Water Quality Information Maps North Santee River/South Santee River," accessed March 2012, <http://www.scdhec.gov/environment/water/shed/maps/50112-060.pdf>.
2010 "Watershed Water Quality Assessment: Salkehatchie River Basin," accessed January 19, 2012, www.scdhec.gov/environment/water/shed/docs/salk.pdf.

- 2006 "Adapting to Shoreline Change Final Report of the Shoreline Adaptation Committee, April," accessed January 12, 2012, <http://www.scdhec.gov/administration/library/CR-009823.pdf>.
- South Carolina Department of Natural Resources (SCDNR)
- 2006 "Coastal Plain Ecoregion Aquatic Habitats, State of South Carolina," accessed January 19, 2012, www.dnr.sc.gov/cwcs/pdf/habitat/CoastalPlainAquatics.pdf.
- South Carolina Department of Parks, Recreation and Tourism (SC DPRT)
- 2012 "South Carolina Tourism Statistics Highlights" U.S. Travel Association, SC Tourism Satellite Account 2009, accessed March 2012, <http://www.scprt.com/our-partners/TourismStatistics.aspx>.
 - 2011 General information, accessed January 21, 2012, <http://www.scprt.com/>.
 - 2010 Personal communication to Le'alani Schaumburg from SC DPRT, July 6, 2010.
 - 2009 "The Economic Impact of Tourism in South Carolina Counties, 2008" Report prepared by U.S. Travel Association, accessed January 21, 2012, <http://www.scprt.com/files/Research/Economic%20Impact%20of%20Travel%20on%20SC%20Counties%202008.pdf>.
 - 2008 "2008 South Carolina State Comprehensive Outdoor Recreation Plan," accessed January 19, 2012, <http://www.scprt.com/tourism-business/outdoorrecreationplan.aspx>.
 - 2004 "Travel to Historic Attractions in South Carolina and the United States Market Trends," prepared for Hospitality and Tourism Management Program, School of Business and Economics, College of Charleston, Jeanette M. Bergeron, accessed January 19, 2012, <http://www.scprt.com/files/Research/Historic%20Attractions%20Travel.pdf>.
- South Carolina's Information Highway (SCIWAY)
- 2011 "South Carolina – Formation of Counties Timeline," accessed August 2011, <http://www.sciway.net/cnty/history/timeline.html>.
- South Carolina State House
- 2011 Student Connection Web site, "The State Music," accessed November 2011, <http://www.scstatehouse.gov/studentpage/coolstuff/music.shtml>.
- South Carolina State Trails Program
- 2008 Palmetto Trail information, accessed January 19, 2012, <http://www.sctrails.net/trails/ALLTRAILS/Palmetto%20Trail/PALMETTO%20TRAIL.html>.
- St. Johns River Water Management District (SJR)
- 2010 "St. Mary's River Basin," accessed DATE, <http://sjr.state.fl.us/stmarysriver/index.html>.
- State of South Carolina
- 2010 "State Symbols & Emblems," Language & Arts, accessed September 2010, <http://www.scstatehouse.gov/studentpage/coolstuff/arts.shtml>.

- Steelman, Ben
2010 "What is the History of Williston High School?" *Star News*, April 28, accessed August 30, 2010, <http://www.myreporter.com/?p=6513>.
- Stewart, Mart A.
2002 *What Nature Suffers to Groe: Life, Labor, and Landscape on the Georgia Coast, 1680–1920*. Athens: University of Georgia Press.
- Svancara, L.
2009 "Measure Development Summary: Conservation Status." Fort Collin, CO: Office of Inventory, Monitoring, and Evaluation, National Park Service.
- The Nature Conservancy (TNC)
2010 "Altamaha River Basin," accessed January 21, 2012, <http://www.nature.org/ourinitiatives/regions/northamerica/unitedstates/georgia/placesweprotect/altamaha-river.xml>.
- The New Georgia Encyclopedia
2009a "Savannah River," accessed January 19, 2012, <http://www.georgiaencyclopedia.org/nge/Article.jsp?id=h-2638&hl=y>.
2009b "River Basins," accessed January 19, 2012, <http://www.georgiaencyclopedia.org/nge/Article.jsp?id=h-2837&hl=y>.
2004 "Altamaha River," accessed January 19, 2012, <http://www.georgiaencyclopedia.org/nge/Article.jsp?id=h-2834&hl=y>.
- Thompson, Robert Farris
1984 *Flash of the Spirit*. New York: Vintage Books.
- Tindall, George Brown
1952 *South Carolina Negroes, 1877–1900*. Columbia: University of South Carolina Press.
- Toner, Robin
1987 "Bible Is Being Translated into a Sourthern [sic] Coastal Tongue Born of Slavery," *New York Times*, March 1.
- Trudeau, Noah Andre
1998 *Like Men of War: Black Troops in Civil War, 1862–1865*. New York: Little, Brown.
- Turner, Lorenzo Dow.
1949 *Africanisms in the Gullah Dialect*. Chicago: University of Chicago Press.
- Twining, Mary Arnold
1977 "An Examination of African Retentions in the Folk Culture of the South Carolina and Georgia Sea Islands." (PhD diss., Indiana University).
- Twining, Mary A., and Keith E. Baird
1991 *Sea Island Roots: The African Presence in the Carolinas and Georgia*. Trenton: Africa World Press.

University of Georgia

- 2008 "Upland Combshell," Museum of Natural History, accessed January 19, 2012, http://naturalhistory.uga.edu/~GMNH/gawildlife/index.php?page=speciespages/ai_species_page&key=emetastrata.
- 2001 "Altamaha River Basin," River Basin Center, accessed January 19, 2012, <http://www.rivercenter.uga.edu/education/k12resources/basinsofga1.htm>

U.S. Army Corps of Engineers (USACE)

- 2005 "Ochlockonee Moccasinshell," South Atlantic Division, accessed February 1, 2012, <http://el.erdc.usace.army.mil/tessp/profile.cfm?Type=Freshwater%20Mussels&Name=Ochlockonee%20Moccasinshell&View=Species>.

U.S. Census Bureau

- 2012 American Fact Finder. Data from 2010 and 2000, March 15, 2012. <http://factfinder2.census.gov/faces/nav/jsf/pages/searchresults.xhtml?ref=top&refresh=t>.
- 2010 American Community Survey (ACS) 5-year (2005–2009) estimates, accessed February 2012, <http://factfinder2.census.gov/faces/nav/jsf/pages/index.xhtml>.
- 1990 Census of Population and Housing, 1990 Census. General Population Characteristics. North Carolina, South Carolina, Georgia, Florida, accessed March 15, 2012, <http://www.census.gov/prod/www/abs/decennial/1990.html>

U.S. Department of Agriculture (USDA)

- 2010a Natural Resources Conservation Service, Soil Surveys for South Carolina, Georgia, North Carolina, Florida by County, accessed March 2010, http://soils.usda.gov/survey/printed_surveys/.
- 2010b NSSH Part 622, Ecological and Interpretive Groups, accessed March 2010, <http://soils.usda.gov/technical/handbook/contents/part622.html>.
- 2010c Title 7-Agriculture, Part 657 – Prime and Unique Farmland, accessed March 2010. http://www.access.gpo.gov/nara/cfr/waisidx_00/7cfr657_00.html.
- 2010d Natural Resources Conservation Service, "Santee Subbasin: An Assessment of the Santee Subbasin," accessed March 2012, http://www.esri.sc.edu/Projects/usda/conservation_documents/RWAs/Santee.pdf.

U.S. Department of the Interior (DOI)

- 2005 "Low Country Gullah Culture Special Resource Study and Final Environmental Impact Statement." Atlanta: NPS Southeast Regional Office.

U.S. Environmental Protection Agency (USEPA)

- 2001 "Threats to Wetlands," accessed January 19, 2012, <http://www.epa.gov/wetlands/pdf/threats.pdf>.
- 1990 Clean Air Act of 1963, including 1990 amendments

U.S. Federal Highway Administration (FHWA)

- 2011a America's Byways, accessed January 20, 2012, <http://www.byways.org/explore/states/NC/>.

- 2011b America's Byways, accessed January 20, 2012, <http://www.byways.org/explore/states/SC/>.
- 2011c America's Byways, accessed January 20, 2012, <http://www.byways.org/explore/states/GA/>.
- 2011d America's Byways, accessed January 20, 2012, <http://www.byways.org/explore/states/FL/>.
- 2011e America's Byways, accessed January 20, 2012, <http://www.byways.org/stories/46911>.

U.S. Fish and Wildlife Service (USFWS)

- 2010a "West Indian Manatee Factsheet," accessed January 31, 2012, <http://ecos.fws.gov/speciesProfile/profile/speciesProfile.action?spcode=A007>.
- 2010b "Gray Bat," accessed February 1, 2012, http://www.fws.gov/midwest/endangered/mammals/grbat_fc.html.
- 2010c "Indiana Bat," accessed February 1, 2012, <http://www.fws.gov/midwest/endangered/mammals/inba/index.html>.
- 2010d "Bachman's Warbler," accessed February 1, 2012, <http://www.fws.gov/verobeach/MSRPPDFs/Bachmanswarbler.pdf>.
- 2010e "Sea Beach Amaranth," accessed February 1, 2012, <http://www.fws.gov/nc-es/plant/seabamaranth.html>.
- 2010f "Canby's Dropwort," accessed February 1, 2012, <http://www.fws.gov/nc-es/plant/canbydrop.html>.
- 2010g "Rough-leaved Loosestrife," accessed February 1, 2012, <http://www.fws.gov/nc-es/plant/rlllooses.html>.
- 2010h "Cooley's Meadowrue," accessed February 1, 2012, <http://www.fws.gov/nc-es/plant/coolmeadow.html>.
- 2010i "Golden Sedge," accessed February 1, 2012, <http://www.fws.gov/nc-es/plant/gsedg.html>.
- 2010j "Southeast Region," accessed February 1, 2012, <http://www.fws.gov/southeast/>
- 2007 "Georgia," accessed February 1, 2012, <http://www.fws.gov/southeast/es/partners/StrategicPlan/Appendix%20A%20GA.pdf>.
- 2005a "Anastasia Island Beach Mouse," accessed February 1, 2012, <http://www.fws.gov/northflorida/Species-Accounts/PDFVersions/Beach-Mice-2005.pdf>.
- 2005b "Wood Stork," accessed February 1, 2012, <http://www.fws.gov/northflorida/Species-Accounts/Wood-stork-2005.htm>.
- 2003 "Pondberry," accessed February 1, 2012, <http://www.fws.gov/nc-es/plant/pondberry.html>.

U.S. Geological Survey (USGS)

- 2001 "Landcover Product," accessed February 1, 2012, <http://soils.usda.gov/technical/handbook/contents/part622.html>.

U.S. Supreme Court

- 1954 Brown v. Board of Education of Topeka, 347 U.S. 483.

- U.S. Travel Association
 2012 "The Economic Contribution of Tourism in South Carolina." 2010 Tourism Satellite Account Results, accessed February 2012, <http://www.scprrt.com/files/Research/SC%20TSA%202010%20Report%20Final.pdf>.
- 2009 "The Economic Contribution of Tourism to the State of North Carolina." Report prepared by Tourism Economics, Wayne, PA, accessed January 20, 2012, <http://www.nccommerce.com/LinkClick.aspx?fileticket=D1fGQ6o6v7U%3d&tabid=1547&mid=4666>
- Visit Florida
 2010 Visit Florida Web site, accessed January 20, 2012, <http://media.visitflorida.org/research.php>.
- Visit Jacksonville
 2011 Visit Jacksonville Web site, accessed January 2012, <http://www.visitjacksonville.com/media-pressroom-economicreports/>.
- 2010 "2009 Value of Tourism in Jacksonville," accessed January 20, 2012, <http://www.visitjacksonville.com/media-pressroom-economicreports/>.
- Wade-Lewis, Margaret
 1988 "The African Substratum in American English." (PhD diss., New York University).
- Walvin, James
 2000 *Britain's Slave Empire*. Charleston: Tempus Publishing.
- Whale Center of New England
 2009 Species Info: Finback Whale, Humpback Whale, Right Whale, accessed January 19, 2012 <http://www.whalecenter.org/information/species.html>.
- Williamson, Joel
 1976 *After Slavery: The Negro in South Carolina During Reconstruction, 1861-1877*. Chapel Hill: University of North Carolina Press, 1965.
- Wilson, Ellen Gibson
 1976 *The Loyal Blacks*. New York: Capricorn Books.
- Winford, Donald
 1998 "On the Origins of African-American Vernacular English: A Creolist Perspective. Part II: Linguistic Features." *Diachronica* 15:99-154.
- 1997 "On the Origins of African-American Vernacular English: A Creolist Perspective. Part I: The Sociohistorical Background." *Diachronica* 14:305-344.
- Wolfram, Walt
 1974 "The Relationship of White Southern Speech to Vernacular Black English." *Language* 50:498-527.

Wood, Peter H.

- 1976 "Black Labor-White Rice: Colonial Manpower and African Agricultural Skill in Early Carolina," in *Shaping Southern Society: The Colonial Experience*, ed. T. H. Breen, 135–155. New York: Oxford University Press.
- 1975 *Black Majority: Negroes in Colonial South Carolina (from 1670 through the Stono Rebellion)*. New York: Alfred A. Knopf.
- 1974 "‘It Was a Negro Taught Them’: A New Look at African Labor in Early South Carolina." *Journal of Asian and African Studies* 9:160–179.

World Tourism Organization

- 2011 "Destination Management," accessed May 12, 2011, <http://www.unwto.org/destination/index.php?lang=E>.

PHOTOGRAPH LIST WITH CREDITS

Chapter 1: Introduction

Background

- Low Country Gullah Culture Special Resource Study, July 2005

Planning Issues and Concerns

- Public Engagement Meeting, Jacksonville, Duval County, FL, February 2009 (Photo Credit: Jeanne C. Cyriaque)

Foundation for Planning and Management

- Old Slave Mart Museum, Charleston, Charleston County, SC (Photo Credit: NPS)

Next Steps and Implementation of the Plan

- Navassa Dock, Navassa, Brunswick County, NC (Photo Credit: Jeanne C. Cyriaque)

Chapter 2: Context of the Gullah Geechee Cultural Heritage Corridor

Historical Overview and Contemporary Events of Significance

- Land's End Live Oak Tree, St. Helena Island, Beaufort County, SC (Photo Credit: Althea Natalga Sumpter)
- "Rice Culture on the Ogeechee, near Savannah, Georgia," January 5, 1867, *Harper's Weekly* (Photo Credit: Avery Research Center for African American History and Culture, College of Charleston, SC)
- Rice Trunk and Canal, Mansfield Plantation, Georgetown, Georgetown County, SC (Photo Credit: NPS)
- Slave Quarters, Fort King George, Darien, McIntosh County, GA (Photo Credit: NPS)
- U.S. Colored Troops, NC Highway Historical Marker, Wilmington National Cemetery, Wilmington, New Hanover County, NC (Photo Credit: Cynthia Porcher)
- Bateau Boat (Photo Credit: Althea Natalga Sumpter)
- Alex and Luther Jones and a Mule, Old Georgetown, Old Georgetown Road, Charleston County, SC (Photo Credit: U.S. Forest Service, Francis Marion National Forest)

Cultural Resources

- Gullah Geechee Seafood Meal: red rice, crab, green beans, whiting fish, cole slaw, bread pudding (Photo Credit: Althea Natalga Sumpter)
- Doing the Ring Shout in Georgia, ca. 1930s (Photo Credit: Lorenzo Dow Turner Papers, Anacostia Community Museum Archives, Smithsonian Institution, gift of Lois Turner Williams)
- Sapelo Island Cultural Day 2003, McIntosh County, GA (Photo Credit: Diedra Laird, Charlotte Observer)
- Sweetgrass Baskets by Vera Manigault (Photo Credit: Cynthia Porcher)

- “Gullah O’oman Quilt” by Bunny Rodrigues (Photo Credit: Cynthia Porcher)
- Coffin Point Praise House, St. Helena Island, Beaufort County, SC (Photo Credit: Althea Natalga Sumpter)
- Three Tabby Cabins, Ossabaw Island, Chatham County, GA (Photo Credit: Jeanne C. Cyriaque)
- Mitchelville Historical Marker, Hilton Head Island, Beaufort County, SC (Photo Credit: Cynthia Porcher)
- Behavior Cemetery, Sapelo Island, McIntosh County, GA (Photo Credit: Jeanne C. Cyriaque)
- Overview of Archaeological Investigation, Kingsley Plantation, National Historic District, Timucuan Ecological and Historic Preserve, Duval County, FL (Photo Credit: James Davidson)
- Sad Iron (heated and used to press clothing) recovered during excavation, Kingsley Plantation, National Historic District, Timucuan Ecological and Historic Preserve, Duval County, FL (Photo Credit: James Davidson)
- Penn Center School, St. Helena Island, Beaufort County, SC (Photo Credit: Cynthia Porcher)
- Penn School Historical Marker, St. Helena Island, Beaufort County, SC (Photo Credit: Cynthia Porcher)
- Dorchester Academy Boys’ Dormitory, Midway, Liberty County, GA (Photo Credit: Jeanne C. Cyriaque)
- Lincolnville Historic District, FL Historical Marker, St. Augustine, St. Johns County, FL (Photo Credit: Derek Boyd Hankerson, Freedom Road 1, LLC)
- Needwood Baptist Church, Brunswick, Glynn County, GA (Photo Credit: Jeanne C. Cyriaque)
- Tabby Cabin Row, Kingsley Plantation, National Historic District Timucuan Ecological and Historic Preserve, Jacksonville Duval County, FL (Photo Credit: Jeanne C. Cyriaque)
- Beach Institute, Savannah, Chatham County, GA (Photo Credit: Jeanne C. Cyriaque)

Natural Resources

- No Title (Photo Credit: NPS)
- No Title (Photo Credit: Althea Natalga Sumpter)
- No Title (Photo Credit: NPS)

Socioeconomic Conditions

- Gullah Geechee Sweetgrass Basket Stand, Highway 17 Near Mount Pleasant, Charleston County, SC (Photo Credit: NPS)
- NPS Youth Educational Field Trip, Morris Island, Charleston County, SC (Photo Credit: NPS)
- Homes in the Harrington Community, St. Simons Island, Glynn County, GA (Photo Credit: Jeanne C. Cyriaque)
- Fresh Conch (Photo Credit: Althea Natalga Sumpter)
- Turnip Greens for Sale (Photo Credit: Althea Natalga Sumpter)

Land Ownership and Land Cover

- Robert Smalls Home, Beaufort, Beaufort County, SC (Photo Credit: Cynthia Porcher)
- Sign on St. Simons Island, Glynn County, GA (Photo Credit: Cynthia Porcher)

Chapter 3: Management of the Gullah Geechee Cultural Heritage Corridor

Management and Organization

- Quarterly Business Meeting, Burgaw, Pender County, NC, August 2011 (Photo Credit: Jerry Immel)
- Quarterly Business Meeting, Charleston, Charleston County, SC, May 2010 (Photo Credit: Althea Natalga Sumpter)
- Quarterly Business Meeting, Brunswick, Glynn County, GA, November 2010 (Photo Credit: Althea Natalga Sumpter)
- Quarterly Business Meeting, Jacksonville, Duval County, FL, February 2009 (Photo Credit: Althea Natalga Sumpter)

Implementation Framework

- Commission Planning Workshop, Denver, CO September 2010 (Photo Credit: NPS)
- Commission Planning Workshop, Charleston, Charleston County, SC, May 2010 (Photo Credit: NPS)

Funding and Early Implementation

- McLeod Plantation, James Island, Charleston County, SC (Photo Credit: NPS)

Ongoing and Future Actions

- Quarterly Business Meeting, Jacksonville, Duval County, FL, February 2009 (Photo Credit: NPS)

Chapter 4: "Tellin We Story"

Part 2: Gullah Geechee Cultural Heritage Corridor

- Stono Rebellion Historical Marker, Charleston County, SC (Photo Credit: Cynthia Porcher)
- Benjamin Bennett Headstone, Parker Island Cemetery, Charleston County, SC (Photo Credit: Cynthia Porcher)
- Robert Smalls National Historic Landmark, Beaufort, Beaufort County, SC (Photo Credit: Cynthia Porcher)
- St. Luke's Rosenwald School, Sapelo Island, McIntosh County, GA (Photo Credit: Jeanne C. Cyriaque)
- Traditional Gullah Geechee Home, Hog Hammock Community, Sapelo Island, McIntosh County, GA (Photo Credit: Jeanne C. Cyriaque)
- Framed Image in Gullah Grub Restaurant, St. Helena Island, Beaufort County, SC (Photo Credit: NPS)
- Sewing Hands, Vera Manigault (Photo Credit: Diedra Laird, Charlotte Observer)

- Mary Jenkins Praise House, St. Helena Island, Beaufort County, SC (Photo Credit: Althea Natalga Sumpter)

Part 3: Heritage Tourism and Visitor Experience

- Friendfield Plantation National Historic Landmark, Georgetown, Georgetown County, SC (Photo Credit: NPS)
- Sugar Cane Syrup Sale at the Riceboro Ricefest 2011, Riceboro, Liberty County, GA (Photo Credit: Althea Natalga Sumpter)

Chapter 5: Consultation and Coordination

Public and Agency Involvement

- Quarterly Business Meeting, Charleston, Charleston County, SC, May 2010 (Photo Credit: NPS)
- North Carolina Partners Meeting, Raleigh, Wake County, NC, April 2010 (Photo Credit: Courtesy of the NC State Archives)
- Public Engagement Meeting, Georgetown, Georgetown County, SC, May 2009 (Photo Credit: Althea Natalga Sumpter)

FIGURE LIST WITH CREDITS

Chapter 1: Introduction

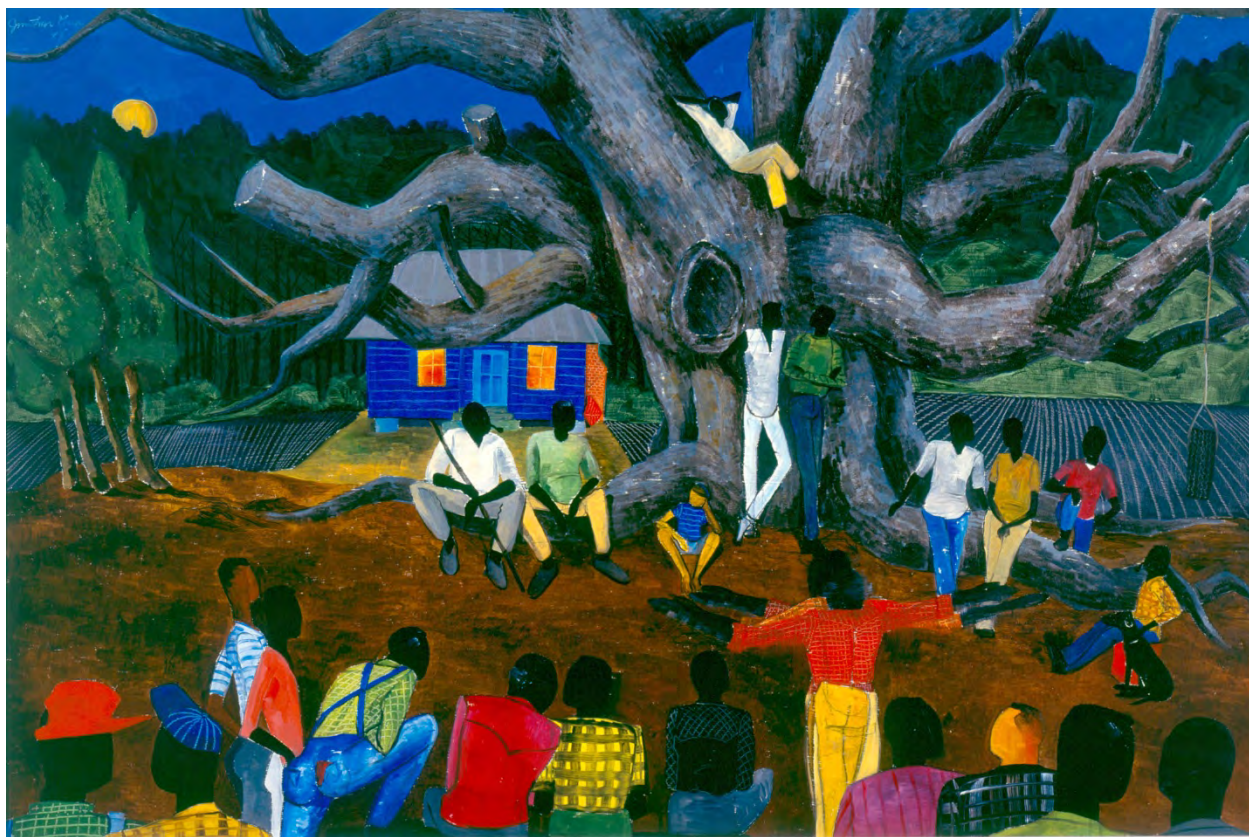
The Corridor Boundary

- Fort Mose 1783, St. Johns County, FL (Figure Credit: Cynthia Porcher)

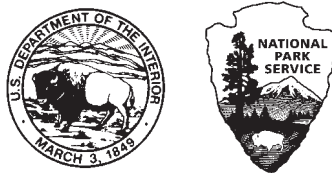
Chapter 2: Context of the Gullah Geechee Cultural Heritage Corridor

Historical Overview and Contemporary Events of Significance

- Map of Ethnic Groups Transported from West and Central Africa to the Americas (Figure Credit: Joseph E. Holloway, *Africanisms in American Culture*, Bloomington, Indiana: Indiana University Press, 1991)
- Page from De Nyew Testament, also known as the Gullah Bible (Figure Credit: David B. Frank)



Tales, 1988 – Oil on Masonite, 24” x 36” © Jonathan Green



As the nation's principal conservation agency, the Department of the Interior has responsibility for most of our nationally owned public lands and natural resources. This includes fostering sound use of our land and water resources; protecting our fish, wildlife, and biological diversity; preserving the environmental and cultural values of our national parks and historical places; and providing for the enjoyment of life through outdoor recreation. The department assesses our energy and mineral resources and works to ensure that their development is in the best interests of all our people by encouraging stewardship and citizen participation in their care. The department also has a major responsibility for American Indian reservation communities and for people who live in island territories under U.S. administration.

NPS 545/108153 JULY 2012



Printed on recycled paper

