

ERRATA SHEET
GREAT LAKES INVASIVE PLANT MANAGEMENT PLAN /
ENVIRONMENTAL ASSESSMENT

1) Page 47, Section 2.3.7, Mitigation Measures and BMPs, Threatened, Endangered, and Sensitive Species BMPs and Mitigation Measures:

Per a request from the U.S. Fish and Wildlife Service (USFWS), Bloomington Ecological Services Field Office additional mitigation measures have been added to provide protection to Karner blue eggs and/or larvae from being crushed and/or adults being harassed during invasive species control activities. Specifically, the following BMP has been added:

Prior to invasive species treatment in High Potential Range known to be occupied by Karner blue butterfly, or in lupine sites where Karner blue butterfly presence or absence is not known, NPS staff will review and implement guidelines provided in the Wisconsin Karner Blue Butterfly Habitat Conservation Plan Management Protocols, Pesticide Use Protocols, which are available at the following website: <http://dnr.wi.gov/topic/ForestPlanning/hcpGuide.html>. NPS staff will be trained in the identification of Karner blue butterfly habitats, including lupine species identification. As feasible, treatment activities within High Potential Range known to be occupied by Karner blue butterfly, or in lupine sites where Karner blue butterfly presence or absence is not known will be conducted outside the dates of April 15 – August 31.

2) Page 47, Section 2.3.7, Mitigation Measures and BMPs, Threatened, Endangered, and Sensitive Species BMPs and Mitigation Measures:

Per a request from the USFWS, Bloomington Ecological Services Field Office additional mitigation measures have been added to provide protection to Pitcher's thistle populations. Specifically, the following BMP has been added:

Prior to invasive plant treatment in potential Pitcher's thistle habitat, NPS staff will be trained in Pitcher's thistle identification. NPS staff will then complete pre-treatment surveys to determine if Pitcher's thistle occurs in proposed treatment areas. If occupied Pitcher's thistle habitat is documented, site-specific consultation with the USFWS will be conducted to determine how to avoid site-specific impacts to the species and/or forego invasive species treatment within occupied habitat.

3) Page 47, Section 2.3.7, Mitigation Measures and BMPs, Threatened, Endangered, and Sensitive Species BMPs and Mitigation Measures:

Per a request from the USFWS, East Lansing Ecological Services Field Office additional mitigation measures have been added to provide protection to Pitcher's thistle populations. Specifically, the following BMP has been added:

Additional, site-specific consultation with the USFWS will be conducted prior to the use of biological controls or aerial spray applications chemical treatments in Pitcher's thistle habitat.

4) Page 70, Rare or Unusual Vegetation, Section 3.2.1, INDU:

Section 3.2.1 has been revised to include the following, fourth rare and unusual habitat type.

Rare and unusual vegetation types in INDU also include the floodplain and valley slopes of the East Branch Calumet River, which are comprised of clay dominated soils and. The clay soils and vegetation of the river area contained within the Heron Rookery and Bailey Units provide habitat for the endangered Indiana bat.

5) Page 76, Rare or Unusual Vegetation, Section 3.3.2, INDU:

The first paragraph of Section 3.3.2 incorrectly refers to INDU supporting four federally and/or state listed animal species. The document has been revised as follows:

Indiana Dunes National Lakeshore provides important habitat for federally and state listed species and is specifically directed through federal law and NPS policy to protect these species and their habitats. There are three federally and/or state listed species found in and around INDU, including:

- Eastern massasauga rattlesnake (*Sistrurus catenatus catenatus*),
- Pitcher's thistle (*Cirsium pitcheri*),
- Karner blue butterfly (*Lycaeides melissa samuelis*).

6) Page 81, Unique Ecosystems, Section 3.4.1, Species of Special Concern including Rare/Critical Habitat, INDU:

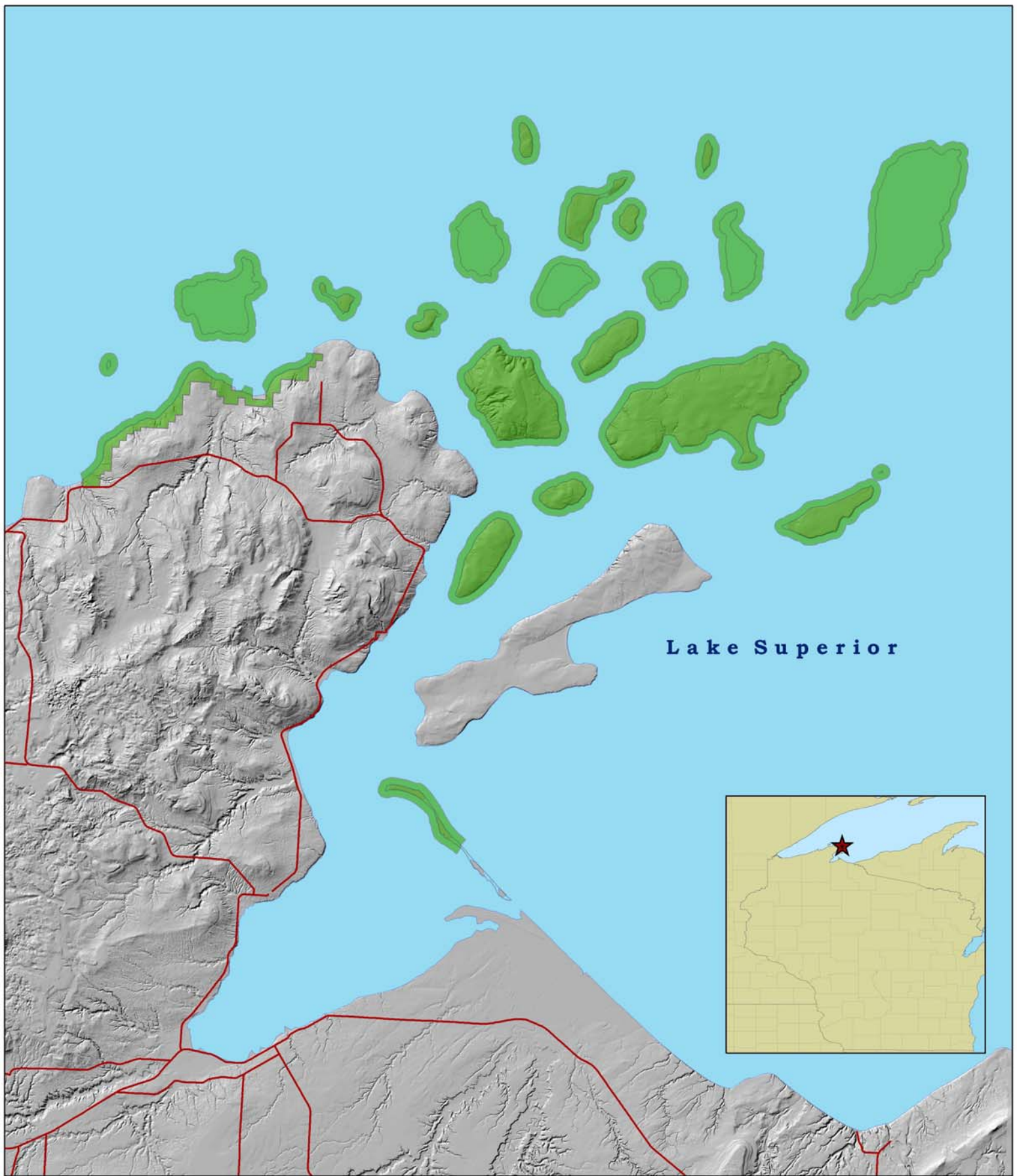
The discussion of NNLs within NDU has been revised to clarify that Dunes Nature Preserve NNL and Hoosier Prairie State Nature Preserve NNL are managed by the Indiana Department of Natural Resources, Division of Nature Preserves, and are not subject to invasive species treatment under this plan.

7) Page 103, Species of Special Concern and their Potential/Critical Habitat, Section 4.2.2.3, APIS Piping Plover Conclusion:

Per a request from the USFWS, Green Bay Ecological Services Field Office in a letter dated April 11, 2012, the conclusion statement for impacts to piping plover in APIS is revised to read "Implementation of Alternative 2 would have moderate, beneficial, indirect and cumulative effects on the piping plover; and therefore, *may affect but is not likely to adversely affect* the species or designated critical habitat."

8) Appendix D – Figures:

Based on the poor condition of maps included in the EA, Appendix D is revised to include the following figures.



Lake Superior

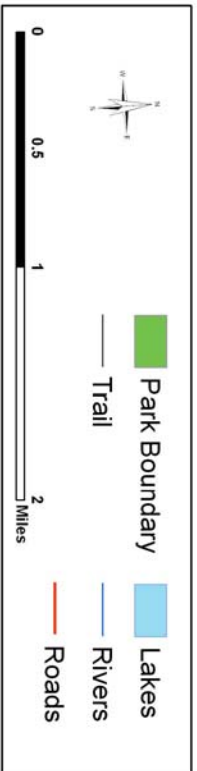
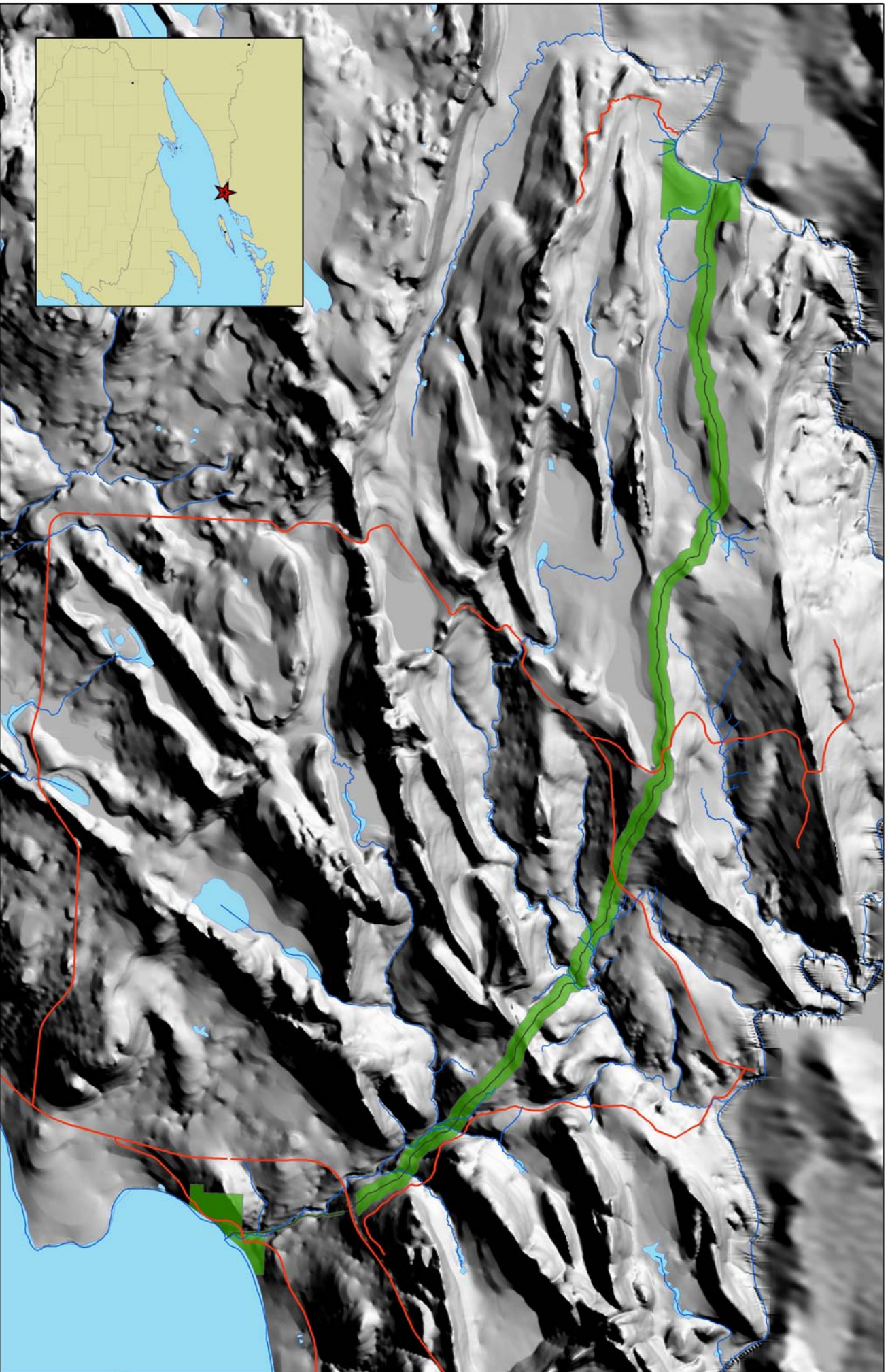


Apostle Islands National Lakeshore

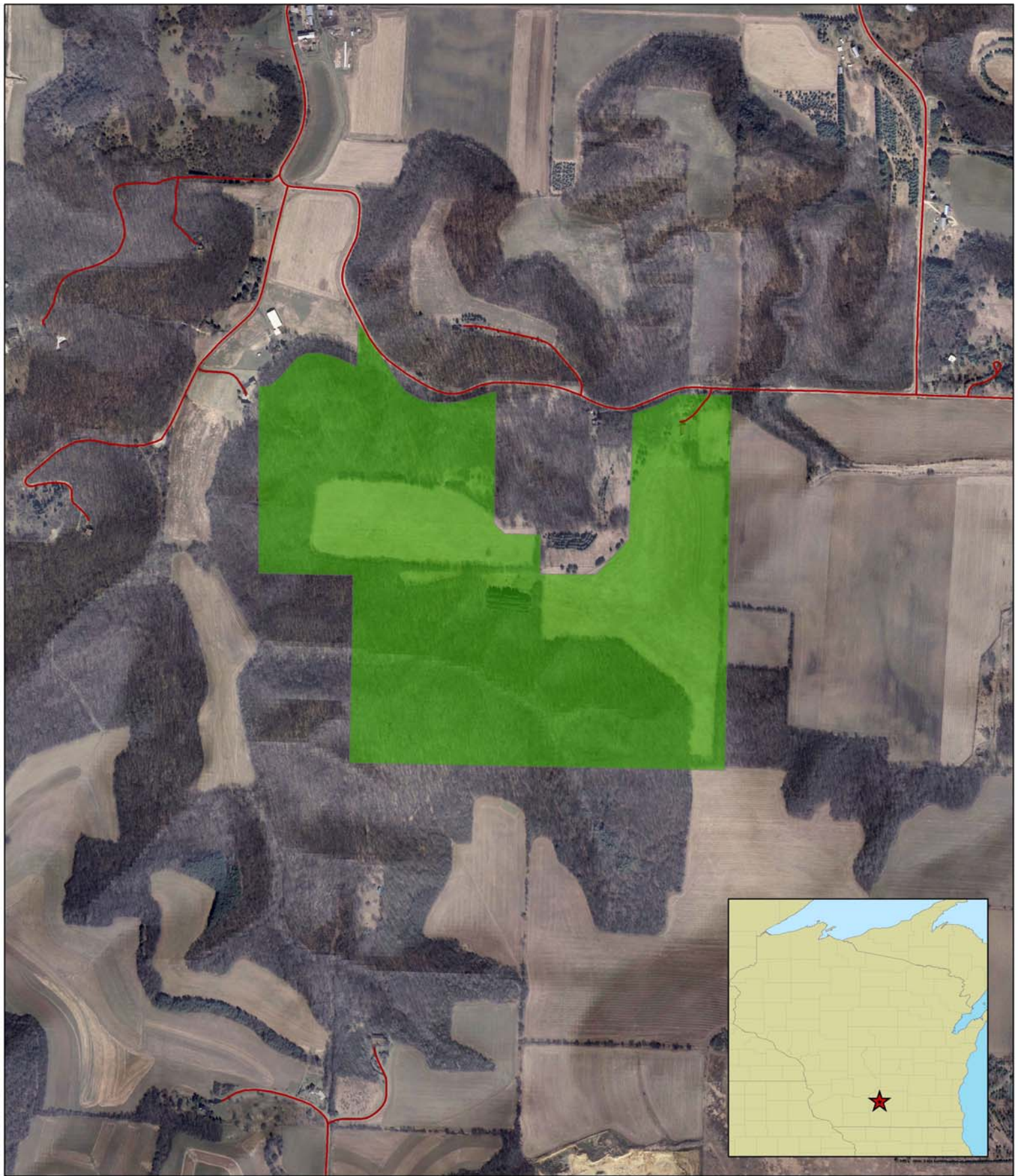




-  Park Boundary
-  Lake Superior
-  Major Roads

0 1.5 3 6 9 Miles



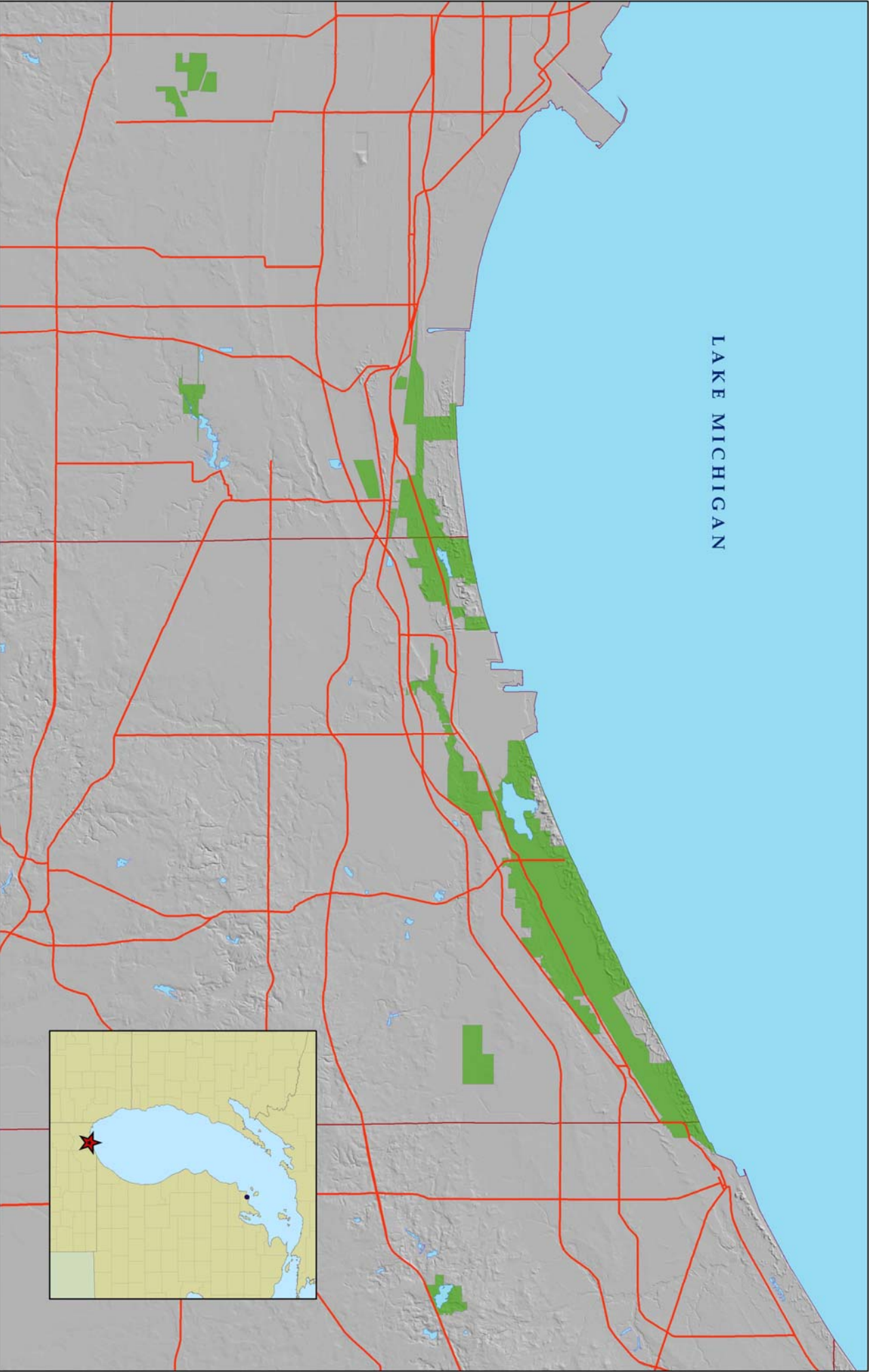
**Grand Portage
National Monument**



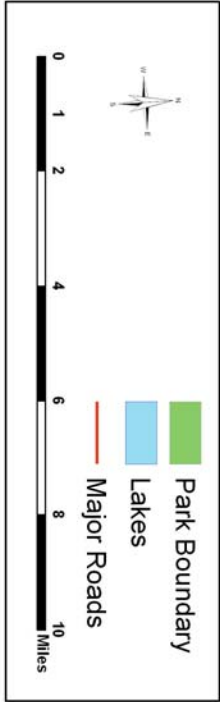
 Park Boundary
 Roads

0 0.05 0.1 0.2 0.3 Miles

Ice Age National Scenic Trail

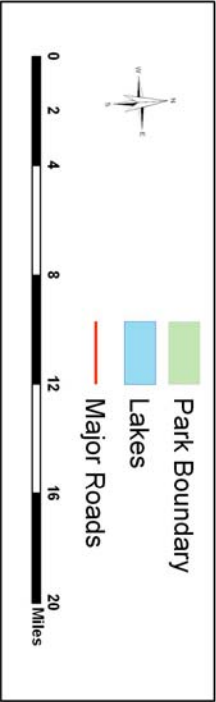
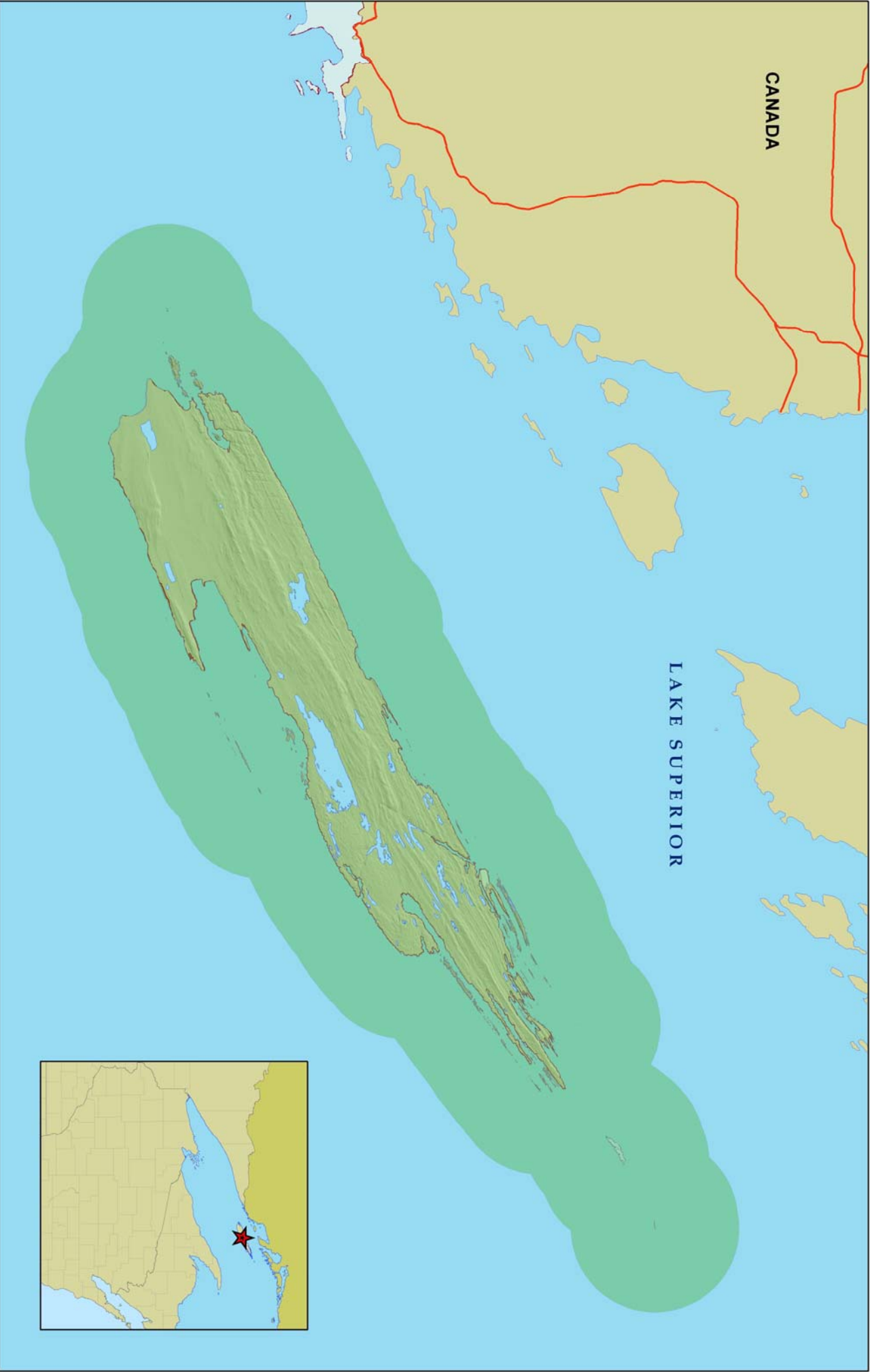


LAKE MICHIGAN

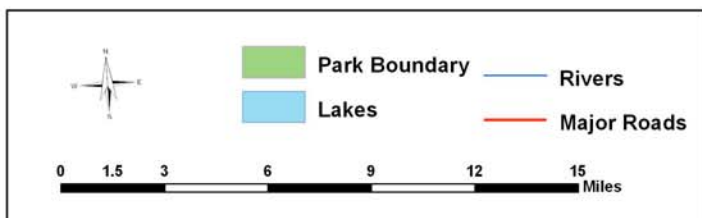
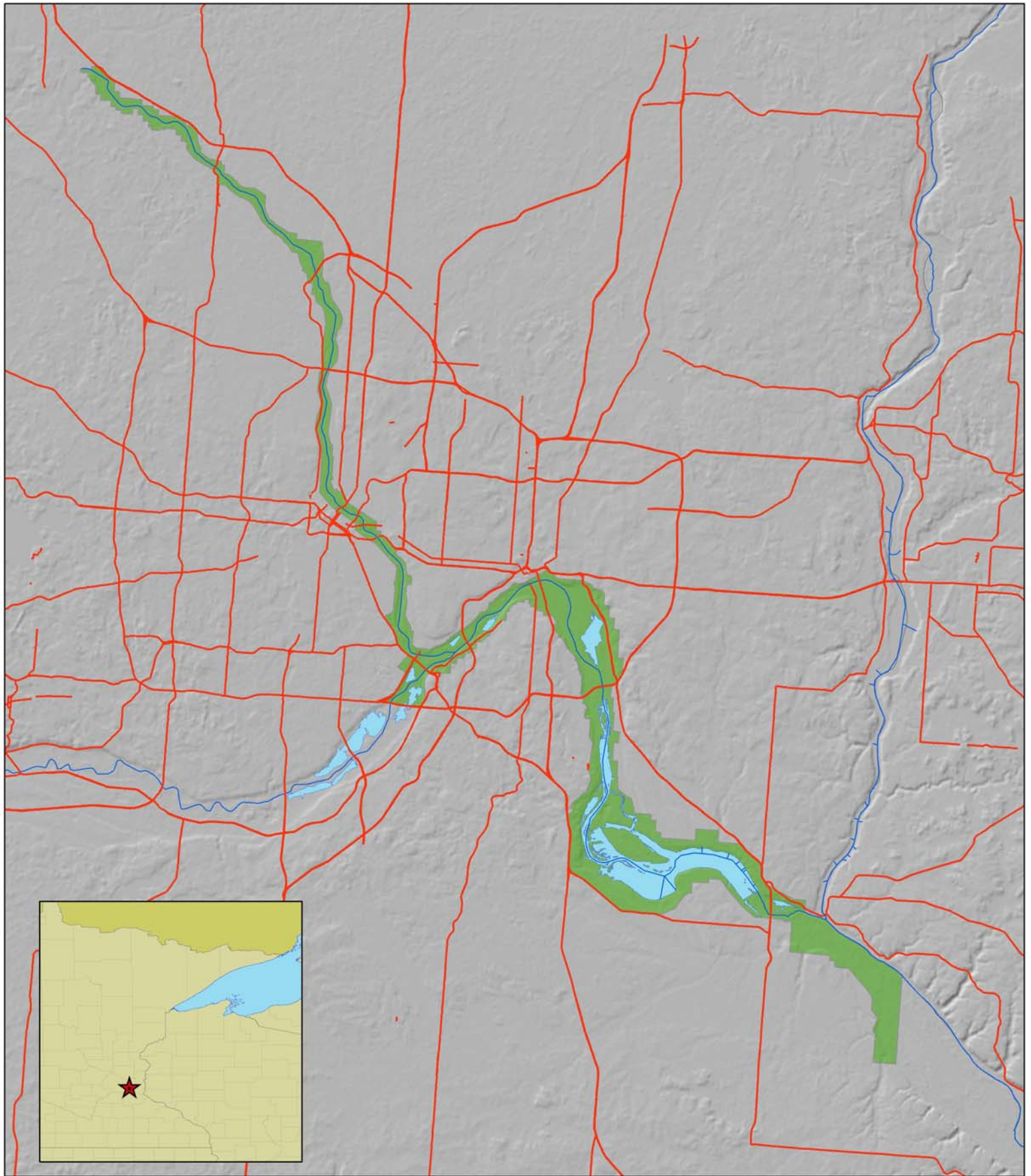


**Indiana Dunes
National Lakeshore**

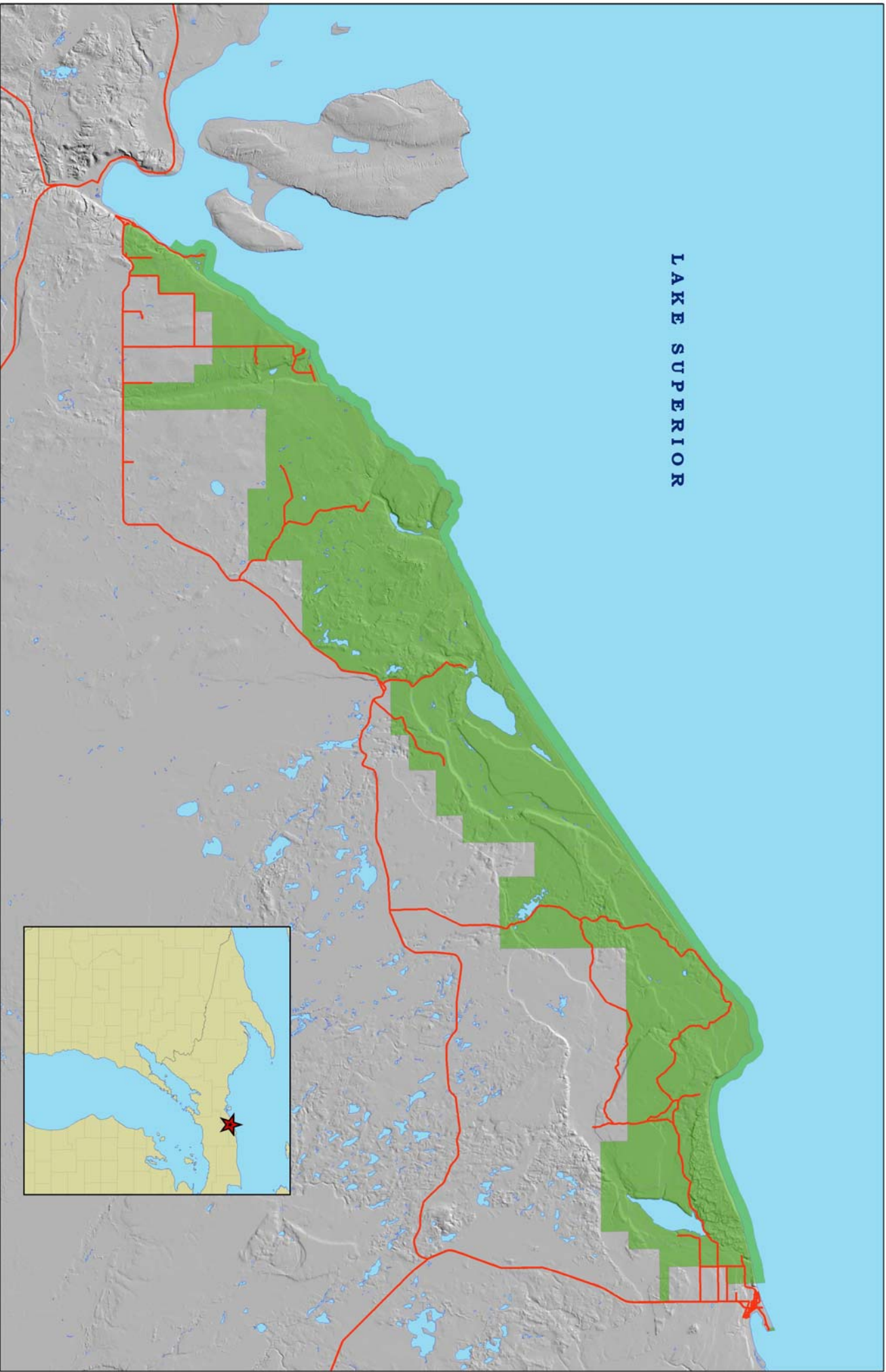




**Isle Royale
National Park**



Mississippi National River and Recreation Area



LAKE SUPERIOR

Park Boundary

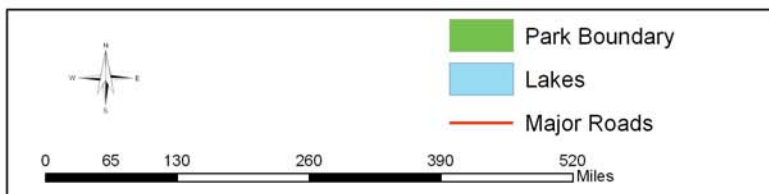
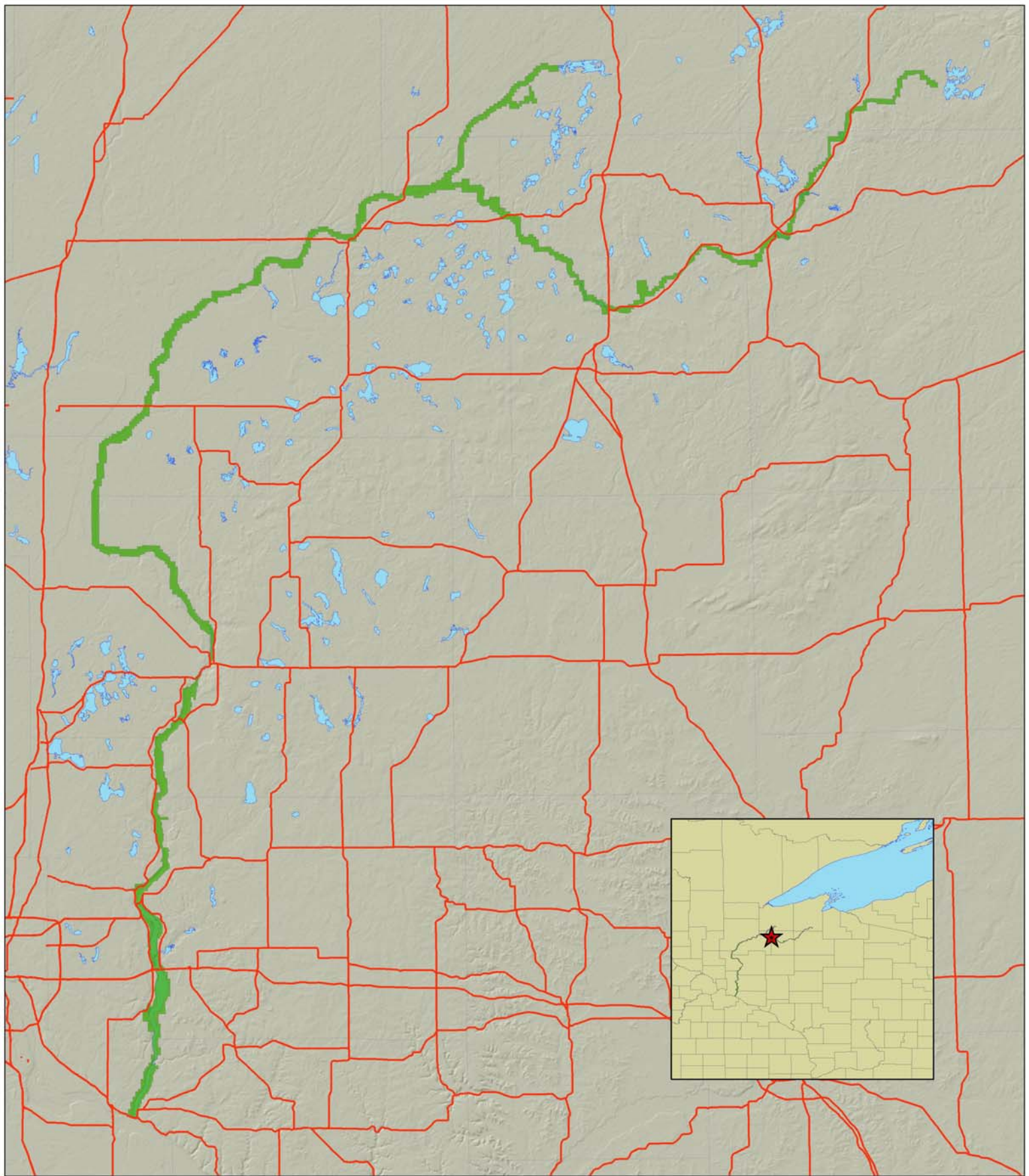
Lakes

Roads

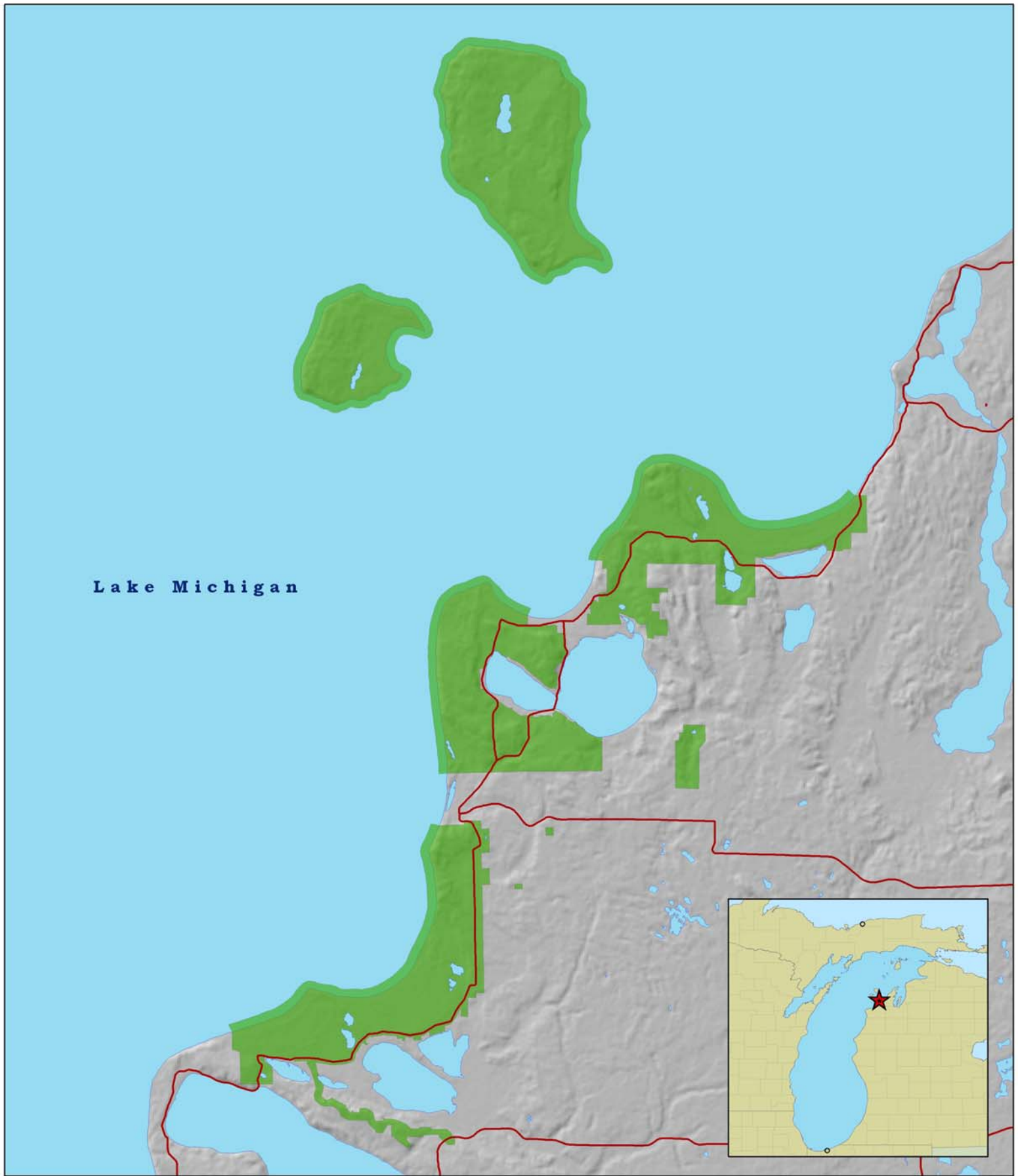
0 1 2 4 6 8 Miles



**Pictured Rocks
National Lakeshore**



Saint Croix National Scenic Riverway



Lake Michigan

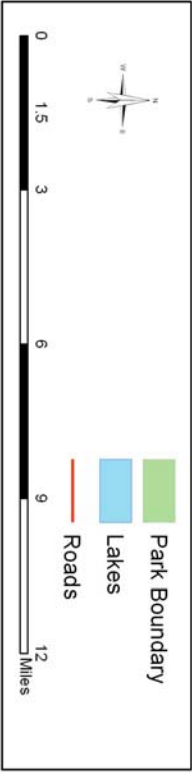
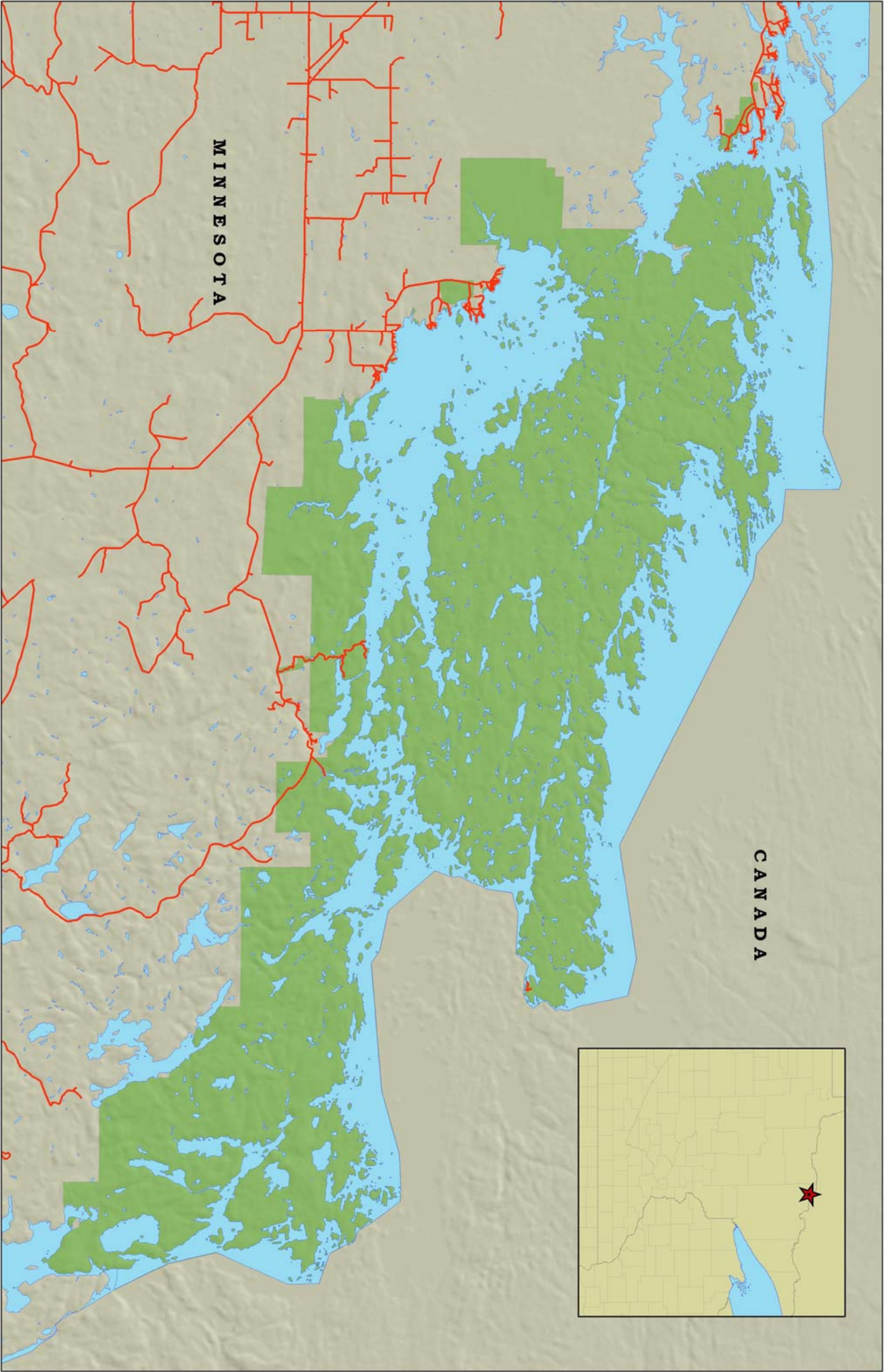


Sleeping Bear Dunes National Lakeshore



0 1.5 3 6 9 Miles

- Park Boundary
- Lakes
- Major Roads



Voyageurs National Park