



UNITED STATES DEPARTMENT OF THE INTERIOR

NATIONAL PARK SERVICE

BIGHORN CANYON NATIONAL RECREATION AREA

COMPENDIUM: 36 CFR 1.7(b)

DESIGNATIONS, CLOSURES, PERMIT REQUIREMENTS AND OTHER RESTRICTIONS
IMPOSED UNDER THE DISCRETIONARY AUTHORITY OF THE SUPERINTENDENT—
TITLE 36, CODE OF FEDERAL REGULATIONS, CHAPTER I.

In accordance with the delegated authority contained within the regulations in Title 36, Code of Federal Regulations, Chapter I, Parts 1 through 7, as authorized by Title 16, United States Code, Sections 1 and 3, the following regulatory provisions are established for Bighorn Canyon National Recreation Area.

These regulatory provisions are enforceable and are an addition to the regulations contained in Title 36, Code of Federal Regulations, Chapter I.

Approved by: _____
Jerry Case, Superintendent

Date: _____

Visitors may obtain additional information or permit applications by contacting the Office of the Superintendent, Bighorn Canyon National Recreation Area, P.O. Box 7458, Fort Smith, MT 59035. You may also check out our website at <http://www.nps.gov/bica>.

A copy of this compendium is available for public review at the following locations:

North District Ranger Office – Bighorn Canyon National Recreation Area
5 Avenue B, Fort Smith MT 59035

South District Ranger Office – Bighorn Canyon National Recreation Area
20 Highway 14A East, Lovell WY 82431

**COMPENDIUM
BIGHORN CANYON NATIONAL RECREATION AREA**

Section 1.5 Closures and Public Use Limits

- (a)(1) The following roads and/or parking areas are closed to non-official vehicles:

All administrative, Western Area Power Authority or roads and parking areas not identified by designated signs, maps, newspaper publication, or other appropriate methods such as electronic media, park brochures, and handouts in accordance with §1.7.

Areas around all potable water system tanks and developed springs are closed.

All fenced sewage lagoons are closed.

Areas between fences and cliff faces at Ok-A-Beh, Devil's Canyon Overlook and Barry's Landing are closed.

Electrical switchyards and their entranceways are closed.

Concession docks are closed excepting lessees, their guests and customers.

Docking limit is thirty (30) minutes at the public boat docks and fifteen (15) minutes at the floating comfort stations (official and concession vessels excepted). Overnight docking or mooring at Box Canyon, Black Canyon, and Dayboard Nine public boat docks is permitted on a first come/first serve basis.

Area from Yellowtail Dam up stream to the orange log boom is closed to the general public.

Om-Ne-A Trail is closed to the general public.

Yellowtail Dam is closed to the general public.

Afterbay Lake is closed between dam intake works and buoyed cable line 100 feet west.

Afterbay Lake is closed between orange log boom and Yellowtail Dam, 3,500 feet up stream.

Section 1.6 Permits

- (f)(1) A compilation of those activities requiring a permit shall be maintained by the Superintendent and available to the public upon request.

The following activities require permits:

Buoy Installations: Chief Ranger (ref. 36 CFR 1.5)

Research Permits (includes specimen collection): Chief of Resource Management (ref. 36 CFR 2.5)

Special Use Permits (i.e. Sporting Tournaments): Chief Ranger (ref. 36 CFR 2.50)

Public Assemblies: Chief Ranger (ref. 36 CFR 2.51); Demonstrations of 25 persons or less do not require a permit.

Sale and Distribution of Printed Material: Chief Ranger (ref. 36 CFR 2.52 a)

Livestock Trailing Operations: Chief Ranger (ref. 36 CFR 2.60)

Business Operations: Chief Ranger (ref. 36 CFR 5.3)

Commercial Operations, including: Photography and Filming: Chief Ranger (ref. 36 CFR 5.5)

Section 2.1 Preservation of Natural, Cultural and Archaeological Resources

- (a)(4) Driftwood at and below the high water mark of Bighorn Lake, and driftwood piles at Ok-A-Beh, Horseshoe Bend, and Barry's Landing may be gathered and removed from the park for personal use. Dead and downed wood at campground areas and within the Yellowtail Wildlife Habitat Area may be collected for immediate use only. Off road travel is not permitted for this purpose. Commercial use is prohibited.
- (c)(1) Edible fruits, nuts, vegetable food stuffs, and berries may be gathered and removed from the park for personal consumption. Off road travel is not permitted for this purpose. Commercial use is prohibited.

Section 2.2 Wildlife Protection

- (b)(1) In accordance with the enabling legislation establishing Bighorn Canyon National Recreation Area, hunting is allowed as specified in Title 16 of the United States Code section 460t-3, i.e., 16 USC § 460t-3.

Hunting activities are regulated by State and Federal laws.

- (b)(1) Hunting within the immediate vicinity of any developed area of the park is prohibited.

Definitions:

Hunting means taking or attempting to take wildlife, except trapping.

Developed Area means roads, parking areas, picnic areas, campgrounds, or other structures, facilities or lands located within development and historic zones depicted on the park area land management and use map.

The use of hounds in pursuit of mountain lions is regulated by State and Federal laws, and hunters are encouraged to contact the appropriate State agency prior to going afield.

Upland bird hunting is allowed at the 3-Mile Access area of the Recreation area.

- (e) Bighorn Canyon NRA is closed to the use of an artificial light for the purposes of wildlife viewing.

Section 2.3 Fishing

- (a) Fishing from Afterbay Dam, to include the fenced areas on the west side of the dam, is prohibited.
- (d)(8) Fishing from public boat docks or swimming beaches in the park is prohibited.

Section 2.4 Weapons, Traps and Nets

- (a)(2)(ii) Target practice is only allowed at the Fort Smith Firing Range.

Weapons may be discharged only when the activity engaged in is hunting or when shooting at the Ft. Smith Firing Range. Weapons may not be discharged (No Shoot Zones) in the following areas:

- In the Fort Smith Government Camp and Yellowtail Dam area including the area north and east of M-K Hill (Fort Smith Firing Range excepted).
- On the Afterbay, on the north-side of the Afterbay, and at the Fort Smith Airstrip. Bow fishing for non-game fish on ponds located on the north side of the Afterbay is permitted according to State law and Federal law.
- At any developed area (see definition) or campground.
- At any historic area (M-L, Lockhart, Hillsboro, Ewing Snell Historic Ranch/Science Center).
- At Common Corrals near Layout Creek.

Section 2.10 Camping and Food Storage

- (a)(1) Designated Camping Areas:
- Dayboard Nine, Black Canyon and Medicine Creek Campgrounds – tents only
 - Afterbay Campground North & South, Horseshoe Bend Campground – tents or RVs
 - North Kane parking lot, Barry's Landing parking lot (gravel area only), Trail Creek Campground – tents or hard-sided camping trailers with self contained black and gray water only

- Afterbay Boat Ramp parking lot, Horseshoe Bend parking lot, and Ok-A-Beh upper parking lot, hard-sided camping trailers with self contained black and gray water only- restricted to one available parking space.
 - Camping/Parking on the Ok-A-Beh Helipad is prohibited.
- (a)(2) Common Corrals and the area just east are designated camping areas for persons with livestock. Other campers may be allowed, if not in use by visitors with livestock, but must give way if visitors with livestock arrive later.
- (a)(3) Camping is allowed on or along Bighorn Lake below the high water mark, and in the NPS portions of the Yellowtail Wildlife Habitat.
- (a)(5) Camping is not allowed within one-quarter mile of a paved road, except at designated camping areas.
- (a)(6) Camping is not allowed within one-quarter mile of historic ranch sites, except through the permission of the Superintendent.
- (b)(9) Camping is limited to a maximum of 30 days per calendar year per person. No more than 14 consecutive days may be spent at any one campground between May 15 and October 15 each year. Campers or tents may not be left unattended for more than 24 hours.
- (d)(1) All food and coolers must be kept in a vehicle, vessel, hard-sided camping unit or, where available, park-provided bear-proof storage boxes, when not in use (Horseshoe Bend excepted).

Section 2.13 Fires

- (a)(1) Fires in developed areas must be contained within park-established fire rings, portable stoves, or grills.

Campfires are permitted in conjunction with backcountry camping and within the Yellowtail Wildlife Habitat Management Unit.

Fires are permitted along the Bighorn Lake shoreline below the high-water mark.

- (a)(2) Fires are not permitted in the Ok-A-Beh, Afterbay, Horseshoe Bend and Barry's Landing parking lots.

Section 2.15 Pets

- (a) Dogs are allowed in all areas of the park to include developed and back country areas under an exception of (a) (1) below and the restrictions of (a) (2) below which requires restraining in a crate, cage or on a leash which shall not exceed six feet in length. Dogs shall not be allowed to run at large in the park with the exceptions noted in (b) and (e) below.

- (a)(1) Pets are not allowed at the Horseshoe Bend Swim Beach Area which includes the grassy picnic area directly up from the beach. The area directly north of the designated swim beach area and the day use area is open to dogs on a leash.
- (a)(2) Pets must be crated, caged, or restrained on a leash which shall not exceed six feet in length in developed and back-country areas of the recreation area except as noted below (e).
- (a)(5) In developed areas, pet excrement must be immediately collected and disposed of in a trash receptacle.
- (b) Dogs may be off leash when being used in support of hunting activities or permitted stock trailing operations; or on a vessel in open water, in accordance with applicable Federal and State law.
- (e) Pets may be under verbal control (e.g., call once and the pet comes) within areas jointly used by the National Park Service and the Bureau of Reclamation including Fort Smith Government Camp, Headquarters area, Grapevine road and the gravel pit area.

Section 2.16 Horses and Pack Animals

- (g)(1) Pack animals are prohibited in designated camping areas and historic ranches, except in the Common Corrals.
- (g)(2) The feeding or dropping of forage in park areas, except for palletized feed or certified weed and seed-free hay, straw, whole grains or cubed products is prohibited.
- (g)(3) All livestock entering or leaving the recreation area must meet state requirements regarding health certificates and brand inspections.

Section 2.51 Public Assemblies, Meetings

The following are designated public meeting or assembly areas. Public meetings or assemblies cannot interfere with foot traffic or block any public entrances. Detailed maps of specific areas will be furnished upon request. See Appendix A

- MK Hill Picnic Area, Fort Smith Montana.
- Afterbay Contact Station 100 feet north of the building.
- Cal Taggart Visitor Center 100 feet North East of the building.
- Horseshoe Bend Marina west of the Fish Cleaning Station.

Section 2.52 Sale or Distribution of Printed Matter

The following areas are designated as acceptable for the sale or distribution of printed matter. Sale or distribution areas may not interfere with foot traffic or block any public entrance. Detailed maps of specific areas will be furnished upon request. See Appendix B.

- MK Hill Picnic Area, Fort Smith Montana.
- Afterbay Contact Station 100 feet north of the building.
- Cal Taggart Visitor Center 100 feet North East of the building.
- Horseshoe Bend Marina west of the Fish Cleaning Station.

Section 3.1 Boating and Water Use Activities

All operators and riders must follow applicable state boating regulations regarding personal watercraft.

Montana requires:

- All operators and riders to wear U.S. Coast Guard approved personal flotation devices (PFD).
- If the personal watercraft is equipped with a lanyard-type cord that shuts off the engine if the operator falls off the craft, the lanyard must be attached to the operator's wrist or personal flotation device.
- A "no wake" speed must be maintained when within 200 feet of a dock, swimmer, swimming raft, non-motorized boat or anchored vessel.
- Children 12 years old or younger may not operate a motorboat or a personal watercraft powered by a motor rated at more than 10 horsepower unless accompanied by someone 18 years of age or older. Youths 13 and 14 years of age may not operate those vessels without completing an approved water safety course, or unless accompanied by someone 18 years of age or older.
- A person must be 18 years or older to rent a motorboat or personal watercraft powered by a motor rated at more than 10 horsepower.

Wyoming requires:

- No person operating a personal watercraft shall cross or jump the wake of another watercraft when within 100 feet of the watercraft creating the wake.
- No person shall operate a personal watercraft unless the watercraft is equipped by the manufacturer with a "kill switch." The kill switch shall be attached via a lanyard to the operator of the personal watercraft when it is underway in such a manner that in the event the operator is ejected from the personal watercraft the engine shall stop.

- All persons aboard personal watercraft shall wear a U.S. Coast Guard approved personal flotation device of a suitable size while engaged in such activity.

Section 3.4 Vessel Inspections

All vessels are required to stop at open Bighorn Canyon NRA; Aquatic Invasive Species Check stations prior to launching for inspections. Vessels that have been used within 30 days in states with known occurrence of zebra or quagga mussels (as identified in park information materials) will not be allowed on park waters until completing the prescribed abatement process. Operators of vehicles towing boat trailers parked within the park are required to display on the dashboard of their vehicle a 'clean boat' inspection certificate issued by the NPS or other authorized inspection station. Failure to display the required certificate may result in issuance of a violation notice for failure to comply with Superintendent's conditions.

Section 3.8 Vessel Operations

(a)(2) Afterbay Dam to cable 200 feet downstream is closed to boating.

(b)(2) Private vessels may not tie up to any park buoy not specifically designated as a mooring buoy at any time.

Private individuals are not allowed to place or install their own buoys in the park for mooring purposes.

Private individuals are allowed to anchor in areas where they are not a hazard to navigation. Overnight anchoring of vessels is limited to a maximum of 30 days per calendar year.

All vessels at anchor between sunset and sunrise must display anchor lights. If a vessel is less than 164 feet in length, then its anchor light will be an all-round light visible where it can best be seen from all directions.

Private vessels aren't required to display an all round white light if they are renting dock space from a concession operator in the park.

(b)(7) Teak Boarding / Surfing on Bighorn Lake and Afterbay Lake are prohibited.

Wake Boarding / Surfing on Bighorn Lake and Afterbay Lake are prohibited (see also Section 3.12).

Section 3.9 Personal Watercraft (PWC) Use

(a) Crooked Creek Bay is closed to PWCs.

The following area is closed to PWCs: Bighorn Lake and shoreline south of the area known as The Narrows (legal description R94W, T57N at the SE corner of Section 6, the

SW corner of Section 5, the NE corner of Section 7, and the NW corner of Section 8).
Buoys are installed to delineate this boundary.

Gated area south of Yellowtail Dam's west side to spillway entrance works, and Bighorn River from Yellowtail Dam to cable 3,500 feet north;

At Afterbay Dam - from fenced areas on west side of dam;

Afterbay Lake - Area between dam intake works and buoy/cable line 100 feet west;

All Government Boat docks as posted;

At Ok-A-Beh gas dock (customers excepted) and;

Section 3.12 Vessel towing a person

- (a) Crooked Creek Bay is closed to towing of people.

Section 3.16 Swimming and Wading

Afterbay Dam to cable 200 feet downstream is closed to wading.

Section 3.17 Swimming and Bathing

- (a)(2) Swimmers must obey restrictions as posted.
- (b) Glass containers of all types are prohibited on designated swim beaches.

Section 4.22 Vehicle Safety

- (b)(1) Operating a motorized vehicle(s) on frozen bodies of water in the park (to include Bighorn Lake) is prohibited.

UNITED STATES DEPARTMENT OF THE INTERIOR
NATIONAL PARK SERVICE

COMPENDIUM

APPENDIX A

DESIGNATED AREAS FOR PUBLIC ASSEMBLY

Bighorn Canyon National Recreation Area

2012



Figure 1 Horseshoe Bend Public Assembly Area



Figure 2 Lovell Visitor Center Public Assembly Area

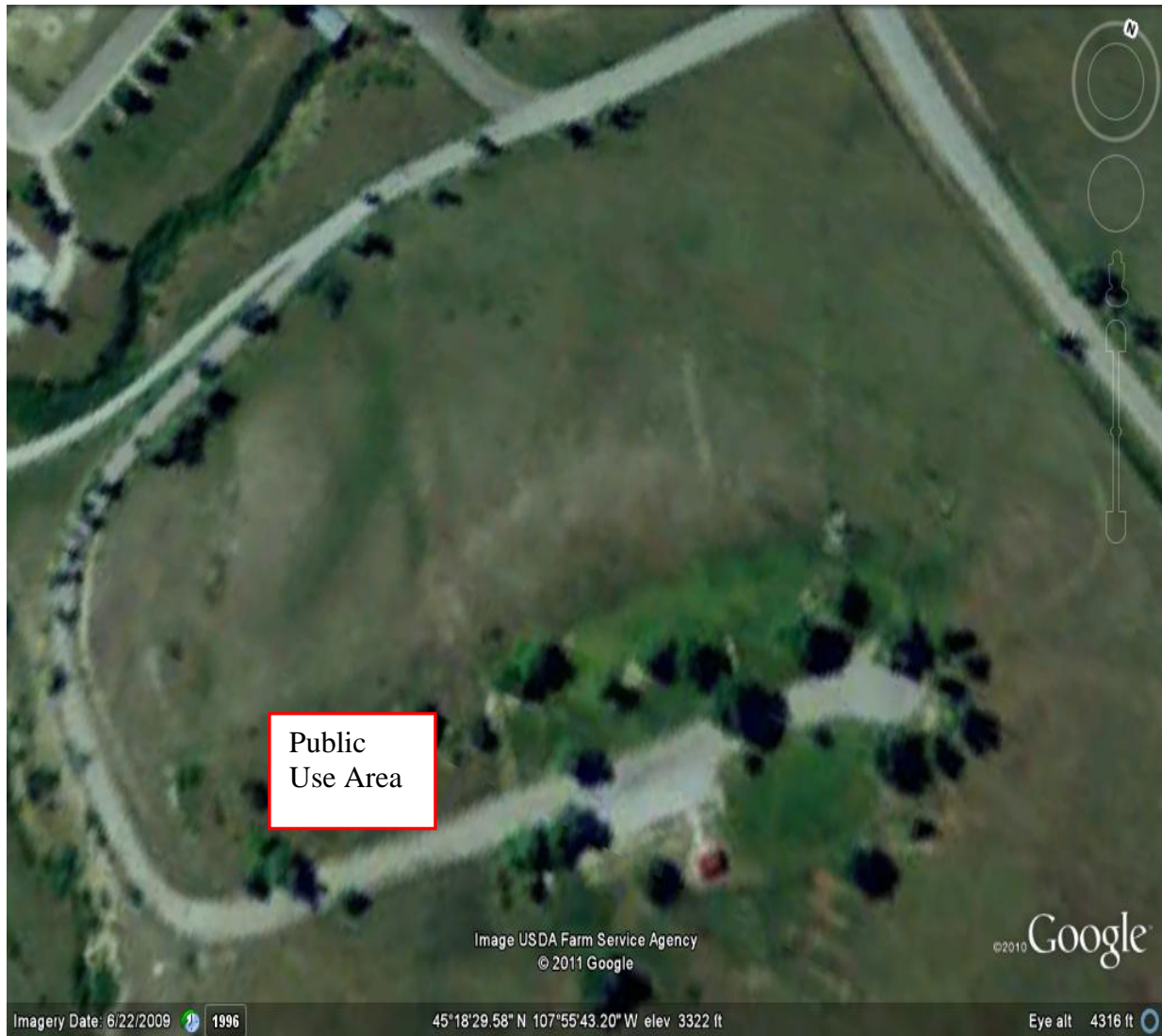


Figure 3 M K Hill Public Use Area



Figure 4 Afterbay Public Assembly Area

UNITED STATES DEPARTMENT OF THE INTERIOR

NATIONAL PARK SERVICE

COMPENDIUM

APPENDIX B

**DESIGNATED AREAS FOR SALE OR DISTRIBUTION
OF PRINTED MATERIAL**

Bighorn Canyon National Recreation Area

2012



Figure 5 Horseshoe Bend Sale and Printed Material Distribution Area



Figure 6 Lovell Visitor Center Sale and Printed Material Distribution Area

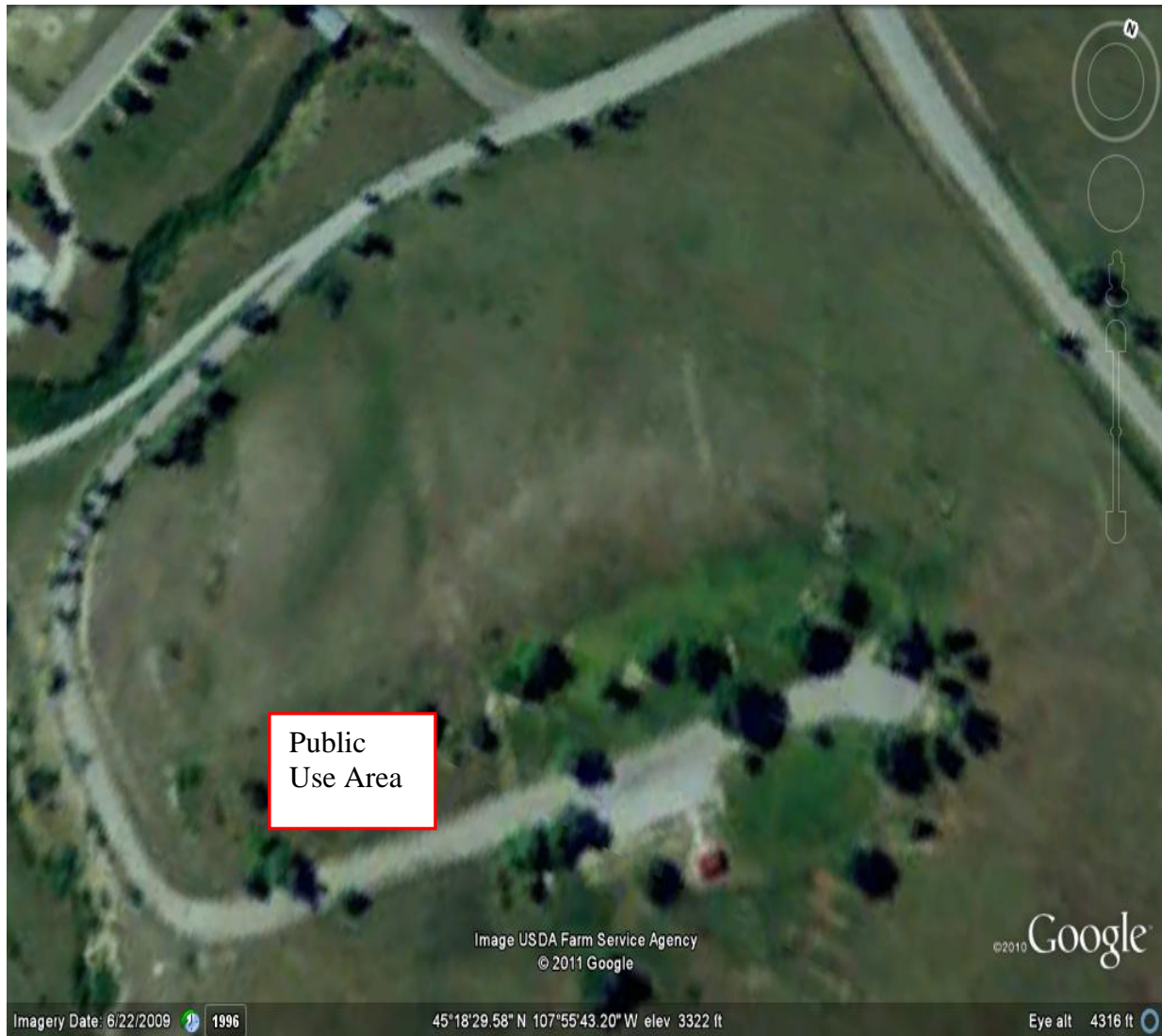


Figure 7 M K Hill Sale and Printed Material Distribution Area



Figure 8 Afterbay Sale and Printed Material Distribution Area