

FIGURES

Lake Michigan

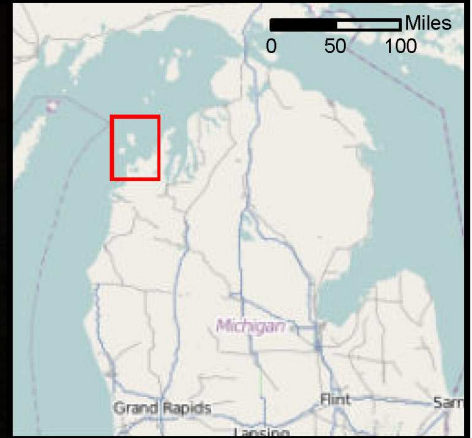



Figure 1-1.
Project Location

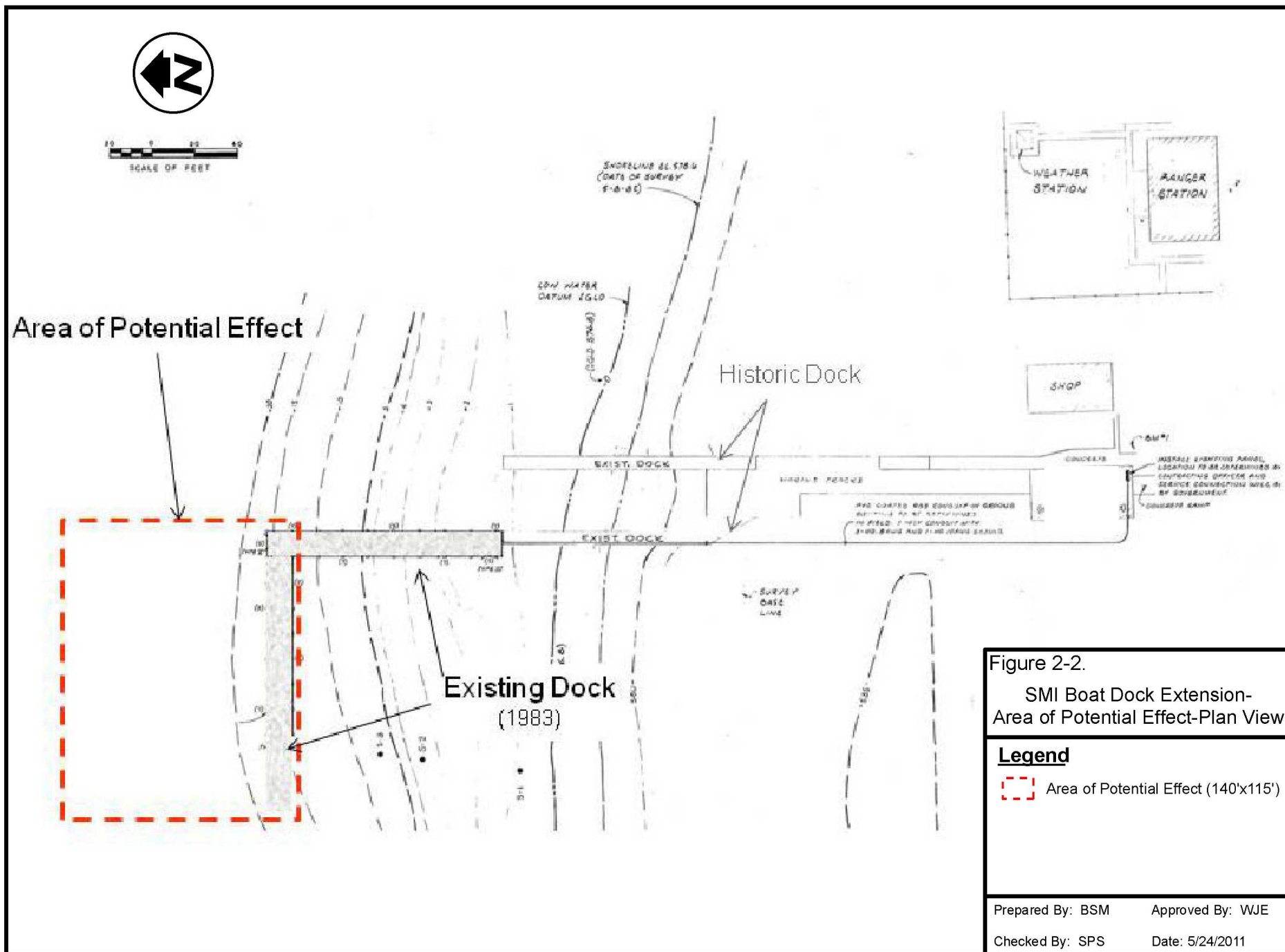
Legend

 Study_Site

0 5 10
Miles

Prepared By: BSM Approved By: WJE
Checked By: SPS Date: 5/24/2011





Appendix A

Special Concern Species

Table A-1 Special Status Species

Scientific Name	Common Name	Federal Status	State Status	Preferred Habitat	Disposition
Invertebrates					
<i>Lampsilis fasciola</i>	Wavyrayed lampmussel		T	Medium rivers with soft or rocky substrates.	Dismissed due to lack of appropriate habitat in project area.
<i>Stagnicola contracta</i>	Deepwater pondsnail		E	Medium to large inland lakes at depths of 33 feet (10 meters). Last observed in Leelanau County in 1949. Not known from Lake Michigan.	Dismissed due to lack of appropriate habitat in project area.
<i>Trimerotropis huroniana</i>	Lake Huron locust		T	Found in undisturbed, high-quality sand dunes with sparse vegetation on the shores of the Great Lakes. Often found with Pitcher's thistle.	Dismissed due to lack of appropriate habitat in project area.
<i>Venustaconcha ellipsiformis</i>	Ellipse		SC	Headwaters, small tributaries and medium rivers with moderate gradient and rocky substrates.	Dismissed due to lack of appropriate habitat in project area.
Fish					
<i>Coregonus artedii</i>	Lake herring or Cisco		T	Midwater regions of the Great Lakes. May spawn in shallow water (3 to 10 feet deep) or in pelagic zones.	Impact analysis provided in Section 4.0.
<i>Notropis anogenus</i>	Pugnose shiner		E	Inhabits littoral and midwater zones of clear vegetated inland lakes and vegetated pools/runs of low gradient streams and rivers. Intolerant of turbidity.	Dismissed due to lack of appropriate habitat in project area.
Amphibians					
<i>Acris crepitans blanchardi</i>	Blanchard's cricket frog		T	Inhabits areas of permanent water in marshes, marsh ponds, lakes, bogs, and slow-moving streams in open wetland areas. Prefers areas of low emergent vegetation to submergent vegetation. May range into surrounding non-wetland habitats.	Dismissed due to lack of appropriate habitat in project area.

Table A-1 Special Status Species

Scientific Name	Common Name	Federal Status	State Status	Preferred Habitat	Disposition
Reptiles					
<i>Terrapene carolina carolina</i>	Eastern box turtle		SC	Prefers forested areas with sandy soil near a source of water (pond, stream, lake, marsh, or swamp). Also found in forest-brush, fields, and marshy meadows. Requires unshaded sandy sites for nesting.	Dismissed due to lack of appropriate habitat in project area.
Birds					
<i>Ammodramus savannarum</i>	Grasshopper sparrow		SC	Prefers grasslands, including cultivated fields, fallow fields, and hayfields where tall grassy vegetation occurs.	Dismissed due to lack of appropriate habitat in project area.
<i>Charadrius melodus</i>	Piping plover	E	E	Found on wide sandy lakeshore beaches with scattered cobbles and sparse vegetation. Also found on Lake Michigan islands in areas with same characteristics. Nesting area may include interdunal wetland or small stream.	Impact analysis provided in Section 4.0.
<i>Cygnus buccinator</i>	Trumpeter swan		T	Marshes and wetlands associated with the Great Lakes, inland lakes, and ponds. Nests are frequently placed on muskrat houses. Reintroduced in the southern area of the park in 2006 and 2007.	Impact analysis provided in Section 4.0.
<i>Dendroica discolor</i>	Prairie warbler		E	Found in early successional habitats, including young pine plantations, clear-cuts in oak forest, upland scrub, fallow fields, young jack pine stands, Christmas tree farms, powerline rights-of-way, and areas of brush or thickets.	Dismissed due to lack of appropriate habitat in project area.
<i>Falco peregrinus</i>	Peregrine falcon		E	Nest on cliff faces and forage in open areas.	Dismissed due to lack of appropriate habitat in project area.

Table A-1 Special Status Species

Scientific Name	Common Name	Federal Status	State Status	Preferred Habitat	Disposition
<i>Gavia immer</i>	Common loon		T	Inland lakes and rivers. Nest where fish populations are good. Quiet sheltered coves with limited boating activity. Utilize Great Lakes in early spring until inland lakes thaw.	Impact analysis provided in Section 4.0.
<i>Haliaeetus leucocephalus</i>	Bald eagle		SC	Found near coastal areas, rivers, lakes, or other bodies of water with a supply of fish, waterfowl, or seabirds. Generally nest within about 13,000 feet (4 kilometers) of water in dead snags or live trees.	Impact analysis provided in Section 4.0.
<i>Mammals</i>					
<i>Microtus pinetorum</i>	Woodland vole		SC	Orchards, forested wetlands, bogs, fence rows, and forests, especially dry hardwood forests of oak, beech, and maple with sandy soils and a thick litter layer.	Dismissed due to lack of appropriate habitat in project area.
<i>Myotis sodalis</i>	Indiana bat	E	E	Summer roosts and forages are in riparian, bottomland, and upland forests with trees that have loose or exfoliating bark.	Dismissed due to lack of appropriate habitat in project area.
<i>Plants</i>					
<i>Adlumia fungosa</i>	Climbing fumitory		SC	Moist or freshly burned woods and rocky slopes with slightly acidic soils	Dismissed due to lack of appropriate habitat in project area.
<i>Asplenium rhizophyllum</i>	Walking fern		T	Found on shaded, moss-covered boulders and ledges, usually on limestone or other basic rocks, but occasionally on sandstone or other acidic rocks, rarely found on fallen tree trunks.	Dismissed due to lack of appropriate habitat in project area.
<i>Asplenium trichomanes-ramosum</i>	Green spleenwort		SC	Found on limestone and other basic rocks.	Dismissed due to lack of appropriate habitat in project area.

Table A-1 Special Status Species

Scientific Name	Common Name	Federal Status	State Status	Preferred Habitat	Disposition
<i>Berula erecta</i>	Cut-leaved water parsnip		T	Found in wet areas; springs, streams, shallows; or often found in water in valleys and plains.	Dismissed due to lack of appropriate habitat in project area.
<i>Botrychium campestre</i>	Prairie moonwort or Dunewort		T	Prairies, dunes, grassy railroad sidings, and fields over limestone. Extremely inconspicuous.	Dismissed due to lack of appropriate habitat in project area.
<i>Botrychium spathulatum</i>	Spatulate moonwort		T	On stabilized but sparsely vegetated sand dunes and grassy meadows along the shores of the upper Great Lakes – known to occur on Manitou Islands.	Dismissed due to lack of appropriate habitat in project area.
<i>Bromus pumpellianus</i>	Pumpelly's brome grass		T	Sandy and gravelly stream banks and lake shores, sand dunes, meadows, dry grassy slopes, and road shoulders.	Dismissed due to lack of appropriate habitat in project area.
<i>Calypso bulbosa</i>	Calypso or fairy-slipper		T	Mesic to wet coniferous forests, mixed forests, and bogs.	Dismissed due to lack of appropriate habitat in project area.
<i>Carex platyphylla</i>	Broad-leaved sedge		E	Found in rich, moist deciduous forests, on rocky or gravelly slopes; soils above limestone, shale, or calcareous metamorphic rocks; and often on clay soils.	Dismissed due to lack of appropriate habitat in project area.
<i>Cirsium pitcheri</i>	Pitcher's thistle	T	T	Found only on the open sand dunes along the shores of the western Great Lakes.	Dismissed due to lack of appropriate habitat in project area.
<i>Cypripedium arietinum</i>	Ram's head lady's-slipper		SC	Found in dry to moist open coniferous and mixed forests, coniferous forested fens, beach thickets.	Dismissed due to lack of appropriate habitat in project area.
<i>Galearis spectabilis</i>	Showy orchis		T	In rich deciduous woods often near temporary spring ponds in sandy clay or rich loam soils	Dismissed due to lack of appropriate habitat in project area.
<i>Huperzia selago</i>	Fir clubmoss		SC	Openings in cedar swamps and other moist conifer stands, mossy, shady banks, mossy boulders, trails and old roads, logs, moist	Dismissed due to lack of appropriate habitat in project area.

Table A-1 Special Status Species

Scientific Name	Common Name	Federal Status	State Status	Preferred Habitat	Disposition
				floors of sandy borrow pits, sandy mossy lake shores.	
<i>Linum sulcatum</i>	Furrowed flax		SC	Disturbed areas with exposed mineral soil within oak barrens and dry prairie remnants.	Dismissed due to lack of appropriate habitat in project area.
<i>Mimulus michiganensis</i>	Michigan monkey flower	E	E	Occurs in sunny areas, roots in silty, sandy, alkaline mud, and grows out of a stream of cool, running water.	Dismissed due to lack of appropriate habitat in project area.
<i>Orobanche fasciculata</i>	Broomrape		T	Found in drier areas of foothills to rocky ridges, prairies, inland sands; in sandy soil; and as parasites on a variety of plants.	Dismissed due to lack of appropriate habitat in project area.
<i>Panax quinquefolius</i>	Ginseng		T	Found in cool moist woods; shade; in rich soil.	Dismissed due to lack of appropriate habitat in project area.
<i>Pterospora andromedea</i>	Pine-drops		T	Found in deep humus of coniferous forests.	Dismissed due to lack of appropriate habitat in project area.
<i>Tanacetum huronense</i>	Lake Huron tansy		T	Active dunes, old, stabilized dunes, and sandy or even substantially cobbled beaches.	Dismissed due to lack of appropriate habitat in project area.
<i>Triphora trianthophora</i>	Nodding pogonia		T	Found in rich, mesic woods, swamp edges, and floodplains.	Dismissed due to lack of appropriate habitat in project area.
E – Endangered T – Threatened SC – Special Concern Source: MDEQ (2011) and USFWS (2011)					Prepared By: SPS 03-17-2011 Checked By: WJE 03-18-2011

Appendix B

Correspondence



IN REPLY REFER TO:

May 27, 2011

D5215(SLBE)

United States Department of the Interior

NATIONAL PARK SERVICE
Sleeping Bear Dunes National Lakeshore
9922 Front St. (Hwy M-72)
Empire, Michigan 49630-9797

Mr. Dan Wyant, Director
Michigan Department of Environmental Quality
P.O. Box 30473
Lansing, Michigan 48909-7973

RE: Request for Information, Extension of Public Access Dock on South Manitou Island, Sleeping Bear Dunes National Lakeshore

Dear Director Wyant:

Sleeping Bear Dunes National Lakeshore is located in Leelanau County, Michigan and includes North Manitou Island (NMI) and South Manitou Island (SMI) in Lake Michigan. A commercial ferry service provides public access to these islands and there are several National Park Service vessels that also access the islands each year. Unfortunately, access to the boat docks has been hindered by lake sand sedimentation which has resulted in the need for routine maintenance dredging.

Sleeping Bear Dunes National Lakeshore is proposing an L-shaped extension to the existing dock at SMI (approximate coordinates are 45.012455 N, -86.094694 W). A project vicinity map, site aerial photograph, and area of potential effect drawing are provided in the enclosed Figures 1 through 3, respectively.

This extension would allow boat access in deeper waters and would minimize or eliminate the need for future maintenance dredging at SMI. This action could potentially have a beneficial effect because it would minimize periodic disturbance of aquatic ecosystems associated with the dredging operations.

Sleeping Bear Dunes National Lakeshore, through a contract with MACTEC Engineering and Consulting, Inc., is in the process of developing National Environmental Policy Act documentation for the proposed project in the form of an Environmental Assessment. As part of the planning and evaluation process, we would welcome your input regarding issues or concerns relevant to your agency. We request that you respond in writing concerning any beneficial or adverse impacts relative to the interests of your agency.

Thank you for your attention to this matter. Your input will help us fully evaluate potential impacts to environmental resources. If you have any questions, please do not hesitate to contact Facility Manager Lee Jameson at (231) 326-5134, ext. 500.

Sincerely,

Tom Ulrich
Acting Superintendent

Enclosures 3

Figure 1: Project Vicinity Map

Figure 2: Site Aerial Photograph

Figure 3: Area of Potential Effect



IN REPLY REFER TO:

May 27, 2011

D5215(SLBE)

United States Department of the Interior

NATIONAL PARK SERVICE

Sleeping Bear Dunes National Lakeshore
9922 Front St. (Hwy M-72)
Empire, Michigan 49630-9797

Chairman Derek Bailey
Grand Traverse Band of Ottawa and Chippewa Indians
2605 North West Bayshore Drive
Peshawbestown, Michigan 49682-9275

RE: Request for Information, Extension of Public Access Dock on South Manitou Island, Sleeping Bear Dunes National Lakeshore

Dear Chairman Bailey:

Sleeping Bear Dunes National Lakeshore is proposing an L-shaped extension to the existing dock at South Manitou Island (SMI). This extension would allow boat access in deeper waters and would minimize or eliminate the need for future maintenance dredging at SMI. A project vicinity map, site aerial photograph, area of potential effect drawing, and dock photographs are enclosed.

Sleeping Bear Dunes National Lakeshore, through a contract with MACTEC Engineering and Consulting, Inc., is in the process of developing National Environmental Policy Act documentation for the proposed project in the form of an Environmental Assessment. As part of the planning and evaluation process, we would welcome your input regarding issues or concerns relevant to your agency. The Michigan State Historic Preservation Office has also received a similar letter with enclosures for their review and comment.

We welcome your input, which will help us fully evaluate potential impacts to resources. If you have any questions, please do not hesitate to contact Facility Manager Lee Jameson at (231) 326-5135, ext. 500.

Sincerely,

Tom Ulrich
Acting Superintendent

Enclosures 4

Figure 1: Project Vicinity Map

Figure 2: Site Aerial Photograph

Figure 3: Area of Potential Effect

Dock Photographs



United States Department of the Interior

NATIONAL PARK SERVICE

Sleeping Bear Dunes National Lakeshore
9922 Front St. (Hwy M-72)
Empire, Michigan 49630-9797

IN REPLY REFER TO:

May 27, 2011

D5215(SLBE)

Mr. Brian D. Conway, State Historic Preservation Officer
Michigan State Historic Preservation Office
702 Kalamazoo Street
Lansing, Michigan 48909-8240

RE: Scoping Comments for Section 106 Consultation for the Extension of Public Access Dock on
South Manitou Island, Sleeping Bear Dunes National Lakeshore

Dear Mr. Conway:

Sleeping Bear Dunes National Lakeshore is currently undertaking a design/build construction project for the extension of the South Manitou Island dock. A commercial ferry service provides public access to these islands each year, as do the park's boating operations. Unfortunately, access to the boat dock has been hindered by lake sand sedimentation which has resulted in the need for routine maintenance dredging. Current dredging operations have become ineffectual as sand deposits have built up and lake levels lowered.

Sleeping Bear Dunes National Lakeshore is proposing an L-shaped extension to the existing dock at South Manitou Island. This extension would allow boat access in deeper waters and would minimize or eliminate the need for future maintenance dredging on the island. A project vicinity map, site aerial photograph, and area of potential effect drawing are provided in the enclosed Figures 1 through 3, respectively.

The proposed dock is an extension of the existing dock which was constructed in 1983. At that time, the U.S. Coast Guard dock was rebuilt and an extension added. This project will be an extension to the dock constructed in 1983 and will be constructed of the same materials matching the same profile. Photos are also enclosed of the rebuilt U.S. Coast Guard dock and 1983 dock extension.

The dock is located adjacent to the South Manitou Island Lighthouse and U.S. Life-Saving Service Station Historic District (83003782), listed on October 28, 1983. The U.S. Coast Guard dock was not included in this nomination or in the amended Determination of Eligibility submitted and approved by your office on November 11, 1999 as a contributing feature.

Sleeping Bear Dunes National Lakeshore is in the process of developing National Environmental Policy Act documentation for the proposed project in the form of an Environmental Assessment and hereby invites you to provide comments that could be incorporated into that document. The dock does extend into Crescent Bay, a part of the Manitou Passage State Underwater Preserve bottomlands, and your comments concerning any impacts to bottomland resources is also requested.

Pursuant to the requirements of Section 106 of the National Historic Preservation Act of 1966, as amended, we respectfully request your comments on this proposal. The Tribal Chairman of the Grand Traverse Band of Ottawa and Chippewa Indians has been forwarded a similar letter with enclosures for their review and comment.

If you have further questions concerning this proposal, please contact Facility Manager Lee Jameson at (231) 326-5135, ext. 500.

Sincerely,



Tom Ulrich
Acting Superintendent

Enclosures 4

Figure 1: Project Vicinity Map

Figure 2: Site Aerial Photograph

Figure 3: Area of Potential Effect

Dock Photographs



IN REPLY REFER TO:

United States Department of the Interior

NATIONAL PARK SERVICE

Sleeping Bear Dunes National Lakeshore
9922 Front St. (Hwy M-72)
Empire, Michigan 49630-9797

May 27, 2011

D5215(SLBE)

Mr. John Konik
U.S. Army Corps of Engineers
Detroit District
P.O. Box 1027
Detroit, Michigan 48231-1027

RE: Request for Information, Extension of Public Access Dock on South Manitou Island, Sleeping Bear Dunes National Lakeshore

Dear Mr. Konik:

Sleeping Bear Dunes National Lakeshore is located in Leelanau County, Michigan and includes North Manitou Island (NMI) and South Manitou Island (SMI) in Lake Michigan. A commercial ferry service provides public access to these islands and there are several National Park Service vessels that also access the islands each year. Unfortunately, access to the boat docks has been hindered by lake sand sedimentation which has resulted in the need for routine maintenance dredging.

Sleeping Bear Dunes National Lakeshore is proposing an L-shaped extension to the existing dock at SMI (approximate coordinates are 45.012455 N, -86.094694 W). A project vicinity map and site aerial photograph is provided in the enclosed Figures 1 and 2, respectively.

This extension would allow boat access in deeper waters and would minimize or eliminate the need for future maintenance dredging at SMI.

Sleeping Bear Dunes National Lakeshore, through a contract with MACTEC Engineering and Consulting, Inc., is in the process of developing National Environmental Policy Act documentation for the proposed project in the form of an Environmental Assessment. As part of the planning and evaluation process, we would welcome your input regarding issues or concerns relevant to your agency. We request that you respond in writing concerning any recommendations and beneficial or adverse impacts relative to the interests of your agency.

Thank you for your attention to this matter. Your input will help us fully evaluate the proposed project. If you have any questions, please do not hesitate to contact Facility Manager Lee Jameson at (231) 326-5135, ext. 500.

Sincerely,

A handwritten signature in blue ink, appearing to read "Tom Ulrich".

Tom Ulrich
Acting Superintendent

Enclosures 2

Figure 1: Project Vicinity Map

Figure 2: Site Aerial Photograph



United States Department of the Interior

NATIONAL PARK SERVICE
Sleeping Bear Dunes National Lakeshore
9922 Front St. (Hwy M-72)
Empire, Michigan 49630-9797

IN REPLY REFER TO:

May 27, 2011

D5215(SLBE)

Mr. Jack Dingledine, Deputy Field Supervisor
U.S. Fish and Wildlife Service, East Lansing Field Office
2651 Coolidge Road
East Lansing, Michigan 48823

RE: Endangered Species Act Section 7 Consultation for the Extension of Public Access Dock on South Manitou Island, Sleeping Bear Dunes National Lakeshore

Dear Mr. Dingledine:

Sleeping Bear Dunes National Lakeshore is located in Leelanau County, Michigan and includes North Manitou Island (NMI) and South Manitou Island (SMI) in Lake Michigan. A commercial ferry service provides public access to these islands and there are several National Park Service vessels that also access the islands each year. Unfortunately, access to the boat docks has been hindered by lake sand sedimentation which has resulted in the need for routine maintenance dredging.

Sleeping Bear Dunes National Lakeshore is proposing an L-shaped extension to the existing dock at SMI. This extension would allow boat access in deeper waters and would minimize or eliminate the need for future maintenance dredging at SMI. This action could potentially have a beneficial effect because it would minimize periodic disturbance of aquatic ecosystems associated with the dredging operations. A project vicinity map, site aerial photograph, and area of potential effect drawing are provided in the enclosed Figures 1 through 3, respectively.

We recognize that local populations of Pitcher's thistle (*Cirsium pitcheri*), a species listed as threatened by both the U.S. Fish and Wildlife Service and the Michigan Department of Environmental Quality, are present in the vicinity of the existing dock facility. A Biological Assessment (BA) was submitted in March 2006 to assess ongoing maintenance dredging activities and its subsequent effects on Pitcher's thistle at both North Manitou and South Manitou Islands. The updated BA is enclosed for your convenience.

Sleeping Bear Dunes National Lakeshore is in the process of developing National Environmental Policy Act documentation for the proposed project in the form of an Environmental Assessment and we would welcome your input regarding issues or concerns relevant to your agency. We request that you respond in writing concerning any concerns that your agency has regarding the proposed project. Additionally, we also request a determination as to whether the aforementioned BA is sufficient for your use in arriving at a Biological Opinion for the current dock extension project at SMI.

Thank you for your attention to this matter. If you have any questions, please do not hesitate to contact Facility Manager Lee Jameson at (231) 326-5134, ext. 500.

Sincerely,

A handwritten signature in blue ink that reads "Tom Ulrich". The signature is written in a cursive, slightly slanted style.

Tom Ulrich
Acting Superintendent

Enclosures 4

Figure 1: Project Vicinity Map

Figure 2: Site Aerial Photograph

Figure 3: Area of Potential Effect

Updated BA for Sleeping Bear Dunes National Lakeshore



RICK SNYDER
GOVERNOR

STATE OF MICHIGAN
DEPARTMENT OF ENVIRONMENTAL QUALITY
LANSING



DAN WYANT
DIRECTOR

June 20, 2011

Received by

JUN 27 2011

Mailroom

Mr. Tom Ulrich
Acting Superintendent
Sleeping Bear Dunes National Lakeshore
United States Department of the Interior
National Park Service
9922 Front Street
Empire, Michigan 49630-9797

Dear Mr. Ulrich:

Thank you for your letter of May 27, 2011, to Director Dan Wyant, Department of Environmental Quality (DEQ), concerning the extension of a public access dock on South Manitou Island in the Sleeping Bear Dunes National Lakeshore. Director Wyant has referred your letter to the DEQ's Water Resources Division (WRD) for response.

The WRD is aware of the sedimentation issue with the existing dock on South Manitou Island and has issued several permits for dredging activities. The impacts from these dredging operations have been minor, since the material being removed is newly deposited with little habitat value and is added back into the system as beach nourishment disposal. The DEQ will take into consideration that the dock extension will provide public access to the island during our review of your application for permit under Part 325, Great Lakes Submerged Lands, of the Natural Resources and Environmental Protection Act, 1994 PA 451, as amended. In addition, if the dock extension prevents the need to conduct frequent maintenance dredging operations, the DEQ would view that favorably to avoid concerns and impacts to our fisheries resources.

Please note that in addition to submitting a construction permit application to the DEQ, a bottomlands conveyance application pursuant to Part 325 will also be required. This application will be reviewed to determine if the proposed dock extension will minimize adverse impacts to the public trust associated with Lake Michigan bottomlands and waters. There is a current bottomlands conveyance for the existing dock on South Manitou Island that authorizes the use and occupation of the subject public trust bottomlands.

If you have any further questions regarding this matter, please contact Ms. Robyn Schmidt, Cadillac District Office, WRD, at 231-876-4444; schmidtr1@michigan.gov; or DEQ, 120 West Chapin Street, Cadillac, Michigan 49601-2158; or Mr. Tom Graf, Water Management Section, WRD, at 517-335-3471; graft@michigan.gov; or DEQ, P.O. Box 30458, Lansing, Michigan 48909-7958; or you may contact me.

Sincerely,

William Creal, Chief
Water Resources Division
517-335-4176

cc: Mr. Dan Wyant, Director, DEQ
Mr. Jim Sygo, Deputy Director, DEQ
Ms. Robyn Schmidt, DEQ
Mr. Tom Graf, DEQ

CONSTITUTION HALL • 525 WEST ALLEGAN STREET • P.O. BOX 30473 • LANSING, MICHIGAN 48909-7973
www.michigan.gov/deq • (800) 662-9278



**DEPARTMENT OF THE ARMY
DETROIT DISTRICT, CORPS OF ENGINEERS
REGULATORY OFFICE
477 MICHIGAN AVENUE
DETROIT, MICHIGAN 48231-1027**

June 23, 2011

REPLY TO
ATTENTION OF:

Engineering & Technical Services
Regulatory Office
File No. LRE-1983-560243-A11

Tom Ulrich
Sleeping Bear Dunes National Lakeshore
9922 Front Street
Empire, Michigan 49630

Dear Mr. Ulrich:

We received a letter from you dated May 27, 2011 regarding extending a public access dock in Lake Michigan at Sleeping Bear Dunes National Lakeshore, South Manitou Island, Michigan. We are sending you this letter to inform you that your proposed project requires authorization from the Corps of Engineers.

In Lake Michigan, as in all navigable waters of the United States including their adjacent wetlands, any construction or discharge of dredged and/or fill material must be authorized by the Department of the Army. The authority of the Corps of Engineers to regulate construction or other work in navigable waters of the United States is contained in Section 10 of the Rivers and Harbors Act (Section 10), Section 404 of the Clean Water Act (Section 404) and regulations promulgated pursuant to these acts.

Under Section 10, a Corps permit is required for any structures or work over, in, or affecting the navigable waters of the United States, such as a pier, to an elevation known as the Ordinary High Water Mark (OHWM). Once your plans have been finalized, please fill out the enclosed permit application and supply drawings of your proposed project.

- 2 -

If you have any questions about our program or about the enclosed permit application, please contact me at the above address, telephone 313-226-3396, or e-mail james.d.luke@usace.army.mil. Please refer to File No. LRE-1983-560243-A11 in all future communications with this office.

Sincerely,

ORIGINAL SIGNED BY

James D. Luke
Regulatory Project Manager
Permit Evaluation Western Branch

Enclosures

Copy Furnished

Lee Jameson ✓
Grand Haven Field Office
MDEQ Cadillac Office

