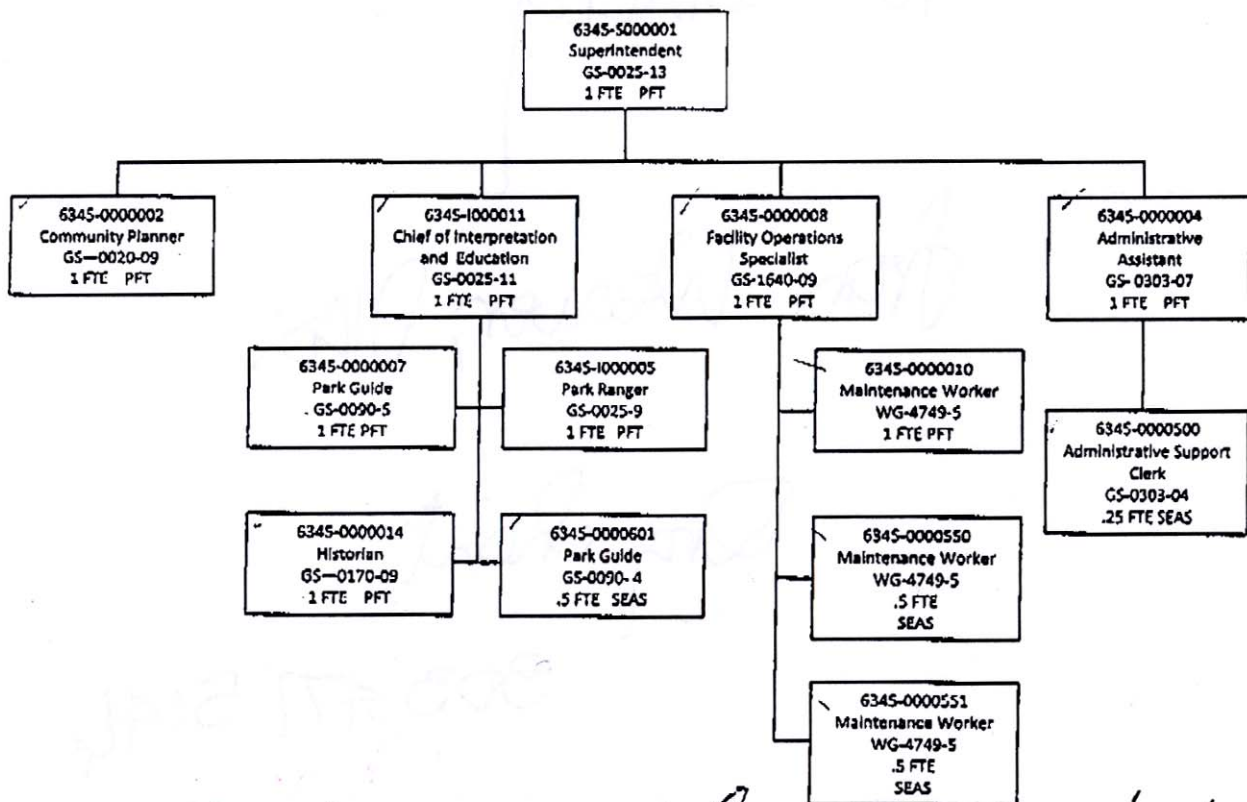


APPENDIX A. NICODEMUS STAFF ORGANIZATIONAL CHART



NICODEMUS NATIONAL HISTORIC SITE MISSION-CRITICAL OPERATIONS PLAN December 2010

NICODEMUS NATIONAL HISTORIC SITE Critical Operations Organization



Approved

/Signed/ Mark Weaver, March 15 2011
Mark Weaver, Superintendent Date

Acting Regional Director, MWR Date

3/17/11

PRIORITIZED STRATEGY:

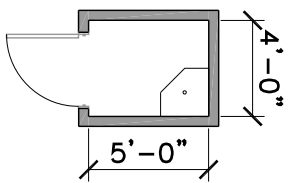
FY 12. Replace the Administrative Technician (GS-6) with an Administrative Assistant (GS-7) and reduce or eliminate funded administrative support from HOME. Replace STEP Laborer (WG-3) with a seasonal Maintenance Worker (WG-5).

FY 13. Hire Chief of Interpretation and Education (GS-11). Hire seasonal Administrative Support Clerk (GS-4). Hire Community Planner (GS-9).

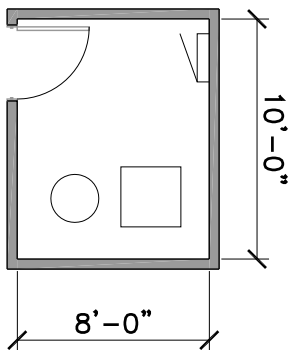
FY 14. Replace permanent Park Ranger (GS-9) with a permanent Park Guide (GS-5). Replace PPT Maintenance Worker (WG-5) with PFT Maintenance Worker (WG-5). Hire Historian (GS-9).

APPENDIX B. PROGRAMMING SKETCHES

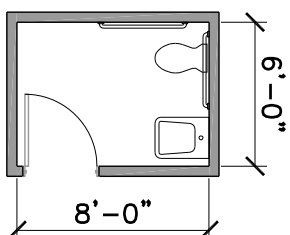




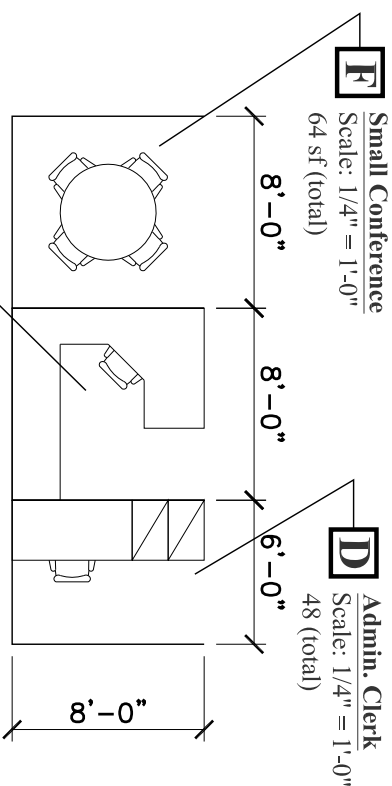
J Janitor
Scale: 1/4" = 1'-0"
20 sf (total)



M Mechanical
Scale: 1/4" = 1'-0"
80 sf (total)



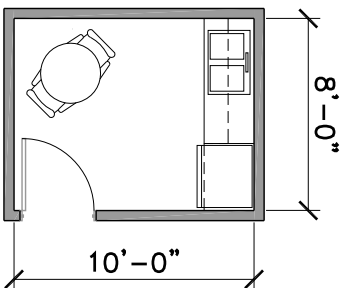
R Restroom
Scale: 1/4" = 1'-0"
48 sf (total)



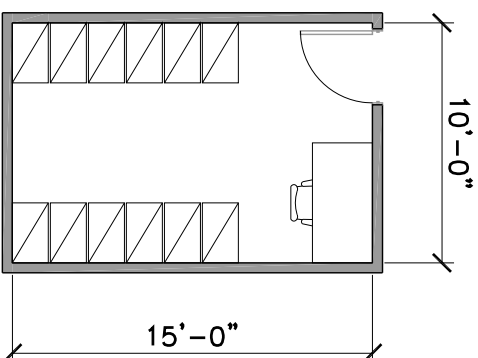
S Small Conference
Scale: 1/4" = 1'-0"
64 sf (total)

D Admin. Clerk
Scale: 1/4" = 1'-0"
48 (total)

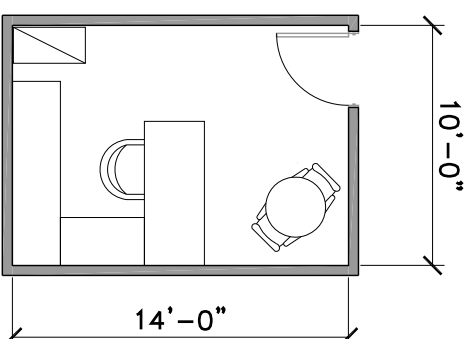
C Community Planner
Scale: 1/4" = 1'-0"
64 sf (total)



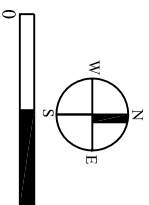
B Break Room
80 sf (total)



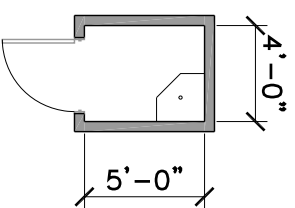
A Administrative Assistant
Scale: 1/4" = 1'-0"
150 sf (total)



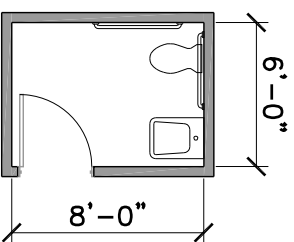
S Superintendent
Scale: 1/4" = 1'-0"
140 sf (total)



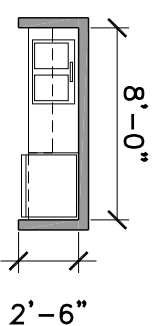
JUNE 2011	TITLE OF PROJECT VISITOR CENTER SITE SELECTION STUDY
UNITED STATES DEPARTMENT OF THE INTERIOR NICODEMUS NATIONAL HISTORIC LANDMARK	TITLE OF DRAWING PROGRAMMING SKETCHES - ADMINISTRATION
NICODEMUS NATIONAL HISTORIC LANDMARK	NAME OF PARK NICODEMUS NATIONAL HISTORIC LANDMARK
REGION MIDWEST	COUNTY GRAHAM
	STATE KANSAS



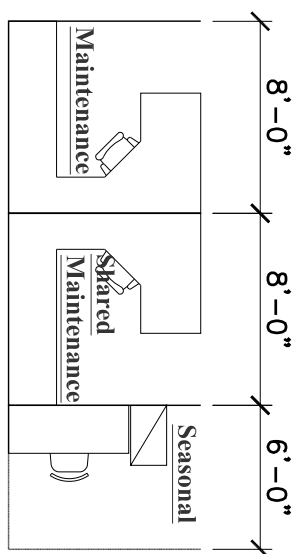
E Janitor
 Scale: 1/4" = 1'-0"
 24 sf (total)



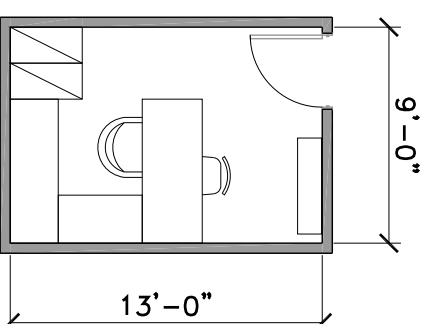
D Restroom
 Scale: 1/4" = 1'-0"
 48 sf (total)



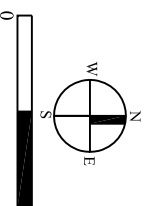
C Coffee Bar
 Scale: 1/4" = 1'-0"
 20 sf (total)



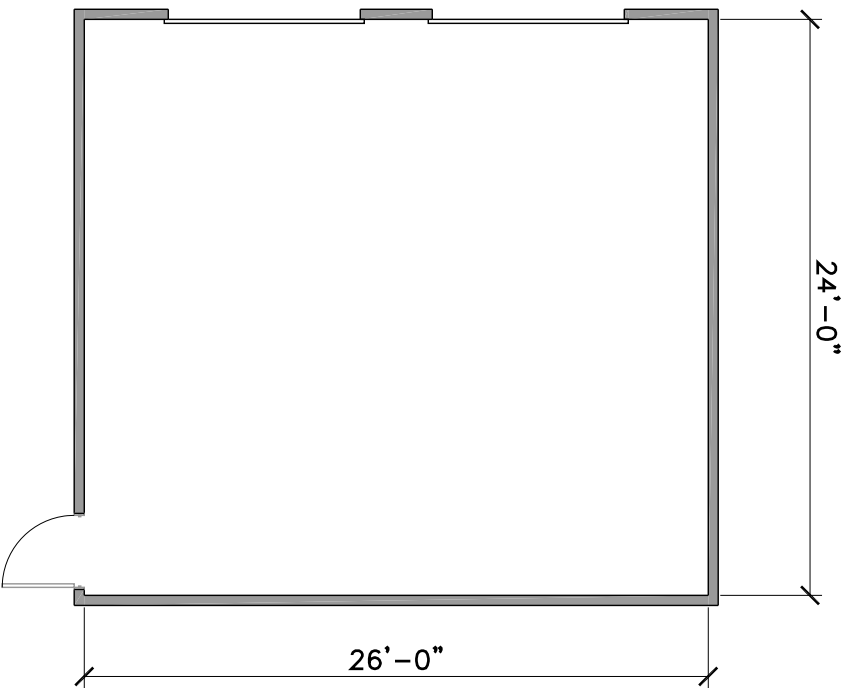
B Staff Work Stations
 Scale: 1/4" = 1'-0"
 176 sf (total)



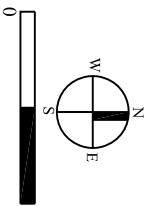
A Facilities Operations Specialist
 Scale: 1/4" = 1'-0"
 120 sf (total)



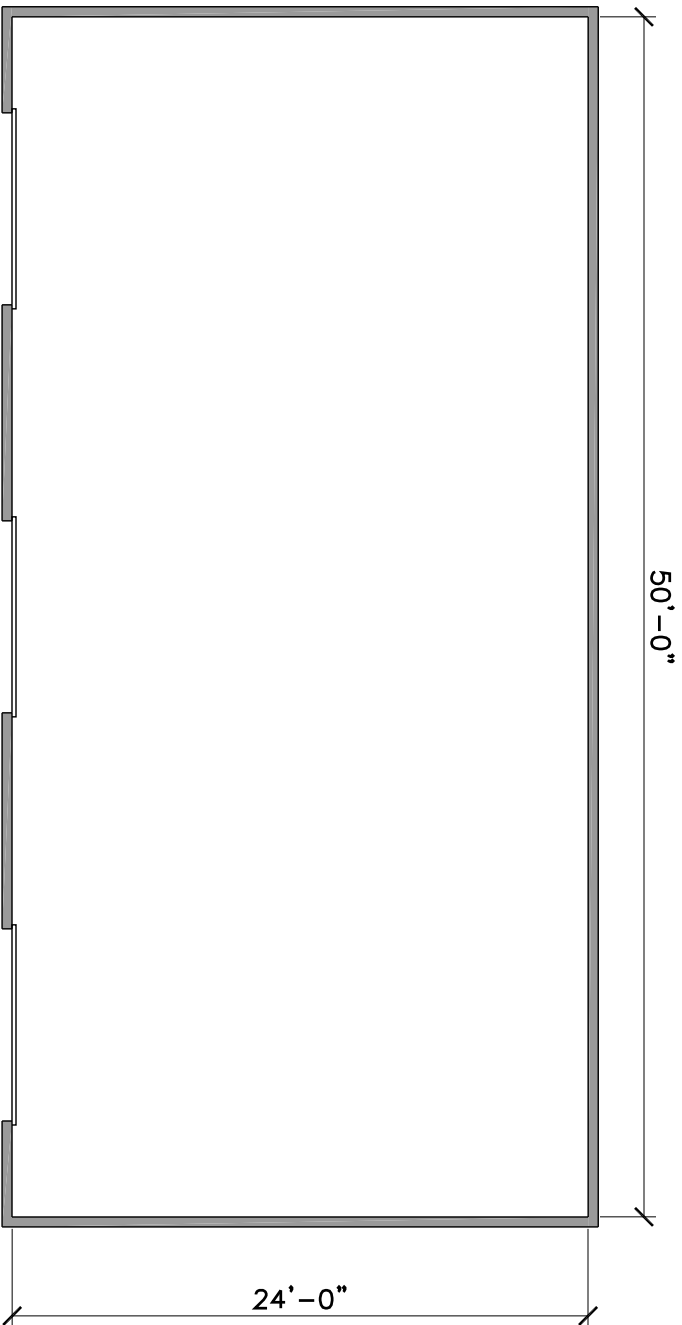
JUNE 2011		TITLE OF PROJECT VISITOR CENTER SITE SELECTION STUDY	
UNITED STATES DEPARTMENT OF THE INTERIOR NICODEMUS NATIONAL HISTORIC LANDMARK		TITLE OF DRAWING PROGRAMMING SKETCHES - MAINTENANCE	
NAME OF PARK NICODEMUS NATIONAL HISTORIC LANDMARK		NAME OF PARK NICODEMUS NATIONAL HISTORIC LANDMARK	
REGION MIDWEST		COUNTY GRAHAM	
STATE KANSAS		STATE KANSAS	



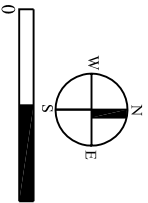
A
2-Bay Garage
Scale 1/4" = 1'-0"
650 sf (total)



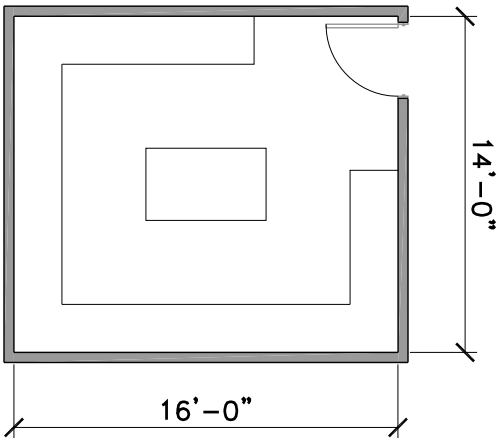
JUNE 2011		TITLE OF PROJECT VISITOR CENTER SITE SELECTION STUDY			
UNITED STATES DEPARTMENT OF THE INTERIOR NICODEMUS NATIONAL HISTORIC LANDMARK		TITLE OF DRAWING PROGRAMMING SKETCHES - MAINTENANCE NAME OF PARK NICODEMUS NATIONAL HISTORIC LANDMARK			
		REGION MIDWEST COUNTY GRAHAM STATE KANSAS			



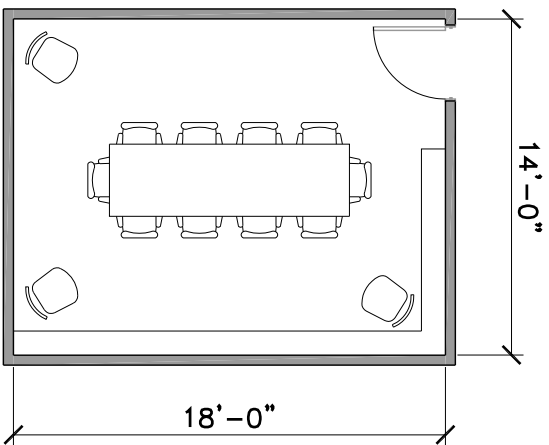
**Storage / Equipment
& Supplies / Materials**
Scale 1/4"= 1'-0"
1200 sf (total)



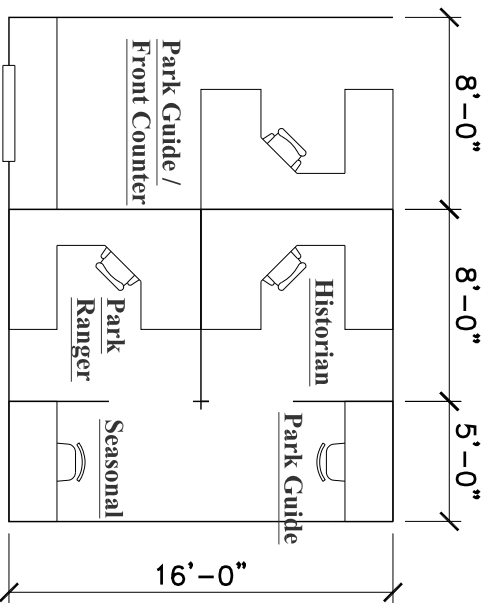
JUNE 2011		TITLE OF PROJECT VISITOR CENTER SITE SELECTION STUDY	
UNITED STATES DEPARTMENT OF THE INTERIOR NICODEMUS NATIONAL HISTORIC LANDMARK		TITLE OF DRAWING PROGRAMMING SKETCHES - MAINTENANCE	
NICODEMUS NATIONAL HISTORIC LANDMARK		NAME OF PARK NICODEMUS NATIONAL HISTORIC LANDMARK	
REGION MIDWEST	COUNTY GRAHAM	STATE KANSAS	



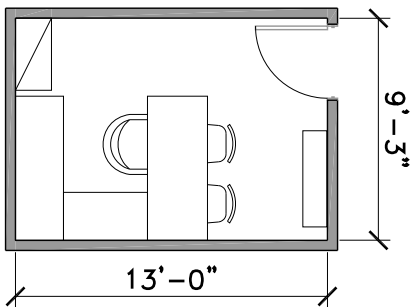
D Interpretive Storage
Scale: 1/4" = 1'-0"
224 sf (total)



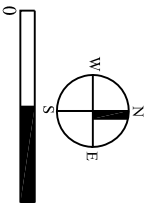
C Conference / Library / Resources
Scale: 1/4" = 1'-0"
252 sf (total)



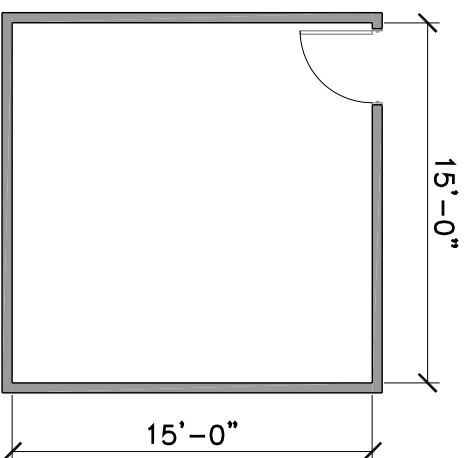
B Misc. Office Space
Scale: 1/4" = 1'-0"
336 sf (total)



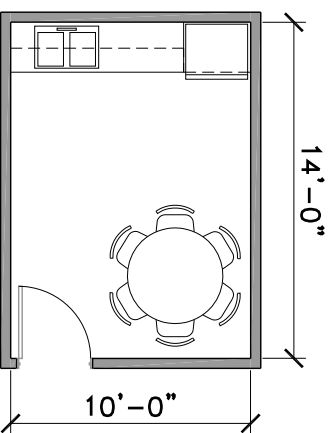
A Interpretive Chief
Scale: 1/4" = 1'-0"
120 sf (total)



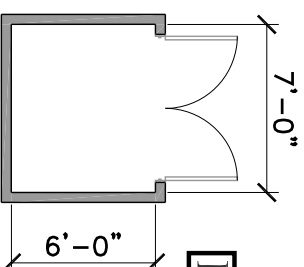
JUNE 2011		TITLE OF PROJECT VISITOR CENTER SITE SELECTION STUDY	
UNITED STATES DEPARTMENT OF THE INTERIOR NICODEMUS NATIONAL HISTORIC LANDMARK		TITLE OF DRAWING PROGRAMMING SKETCHES - VISITOR CENTER	
		NAME OF PARK NICODEMUS NATIONAL HISTORIC LANDMARK	
		REGION MIDWEST	
		COUNTY GRAHAM	
		STATE KANSAS	



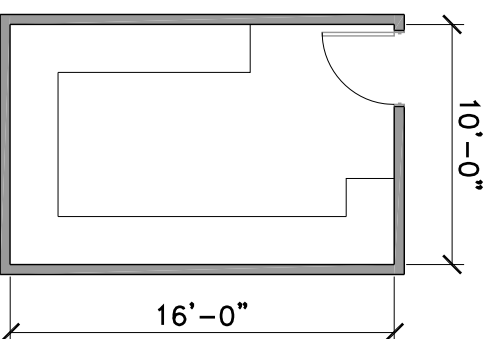
D Mechanical / Electrical
 Scale: 1/4" = 1'-0"
 225 sf (total)



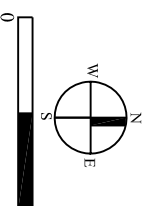
C Break Room
 Scale: 1/4" = 1'-0"
 140 sf (total)



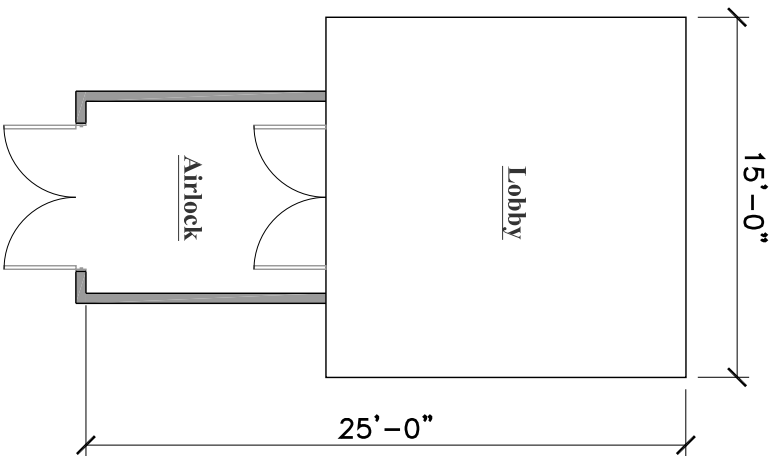
B Chair Storage
 Scale: 1/4" = 1'-0"
 42 sf (total)



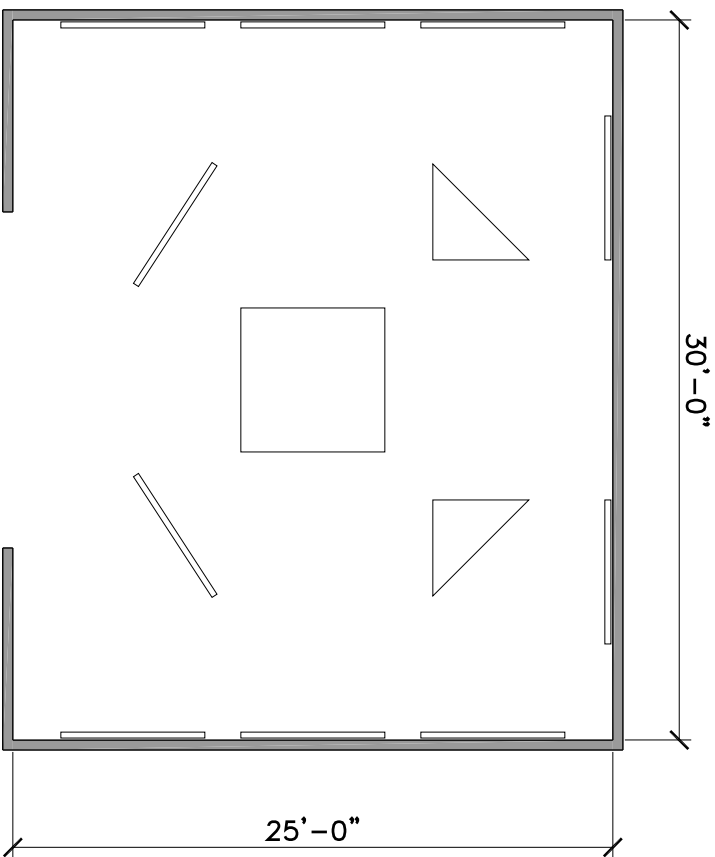
A Resource Storage
 Scale: 1/4" = 1'-0"
 160 sf (total)



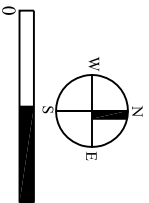
JUNE 2011	TITLE OF PROJECT VISITOR CENTER SITE SELECTION STUDY TITLE OF DRAWING PROGRAMMING SKETCHES - VISITOR CENTER NAME OF PARK NICODEMUS NATIONAL HISTORIC LANDMARK REGION MIDWEST COUNTY GRAHAM STATE KANSAS
UNITED STATES DEPARTMENT OF THE INTERIOR	
NICODEMUS NATIONAL HISTORIC LANDMARK	



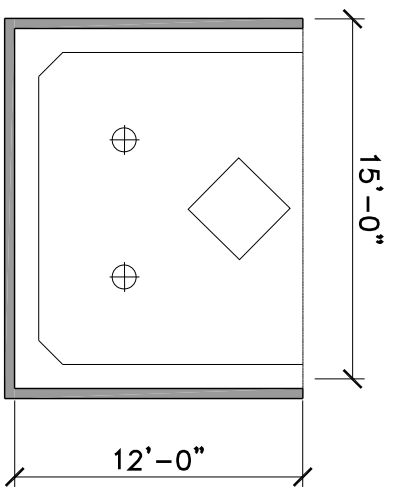
B
Airlock / Lobby
 Scale: 1/4" = 1'-0"
 300 sf (total)



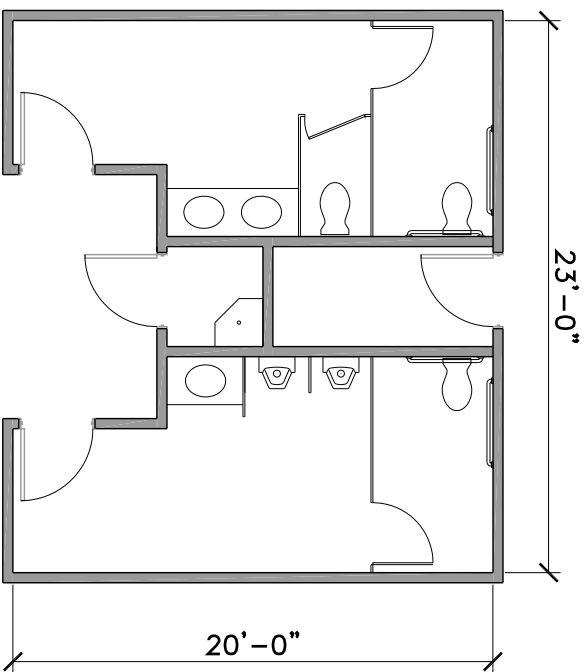
A
Exhibit Area
 Scale: 1/4" = 1'-0"
 750 sf (total)



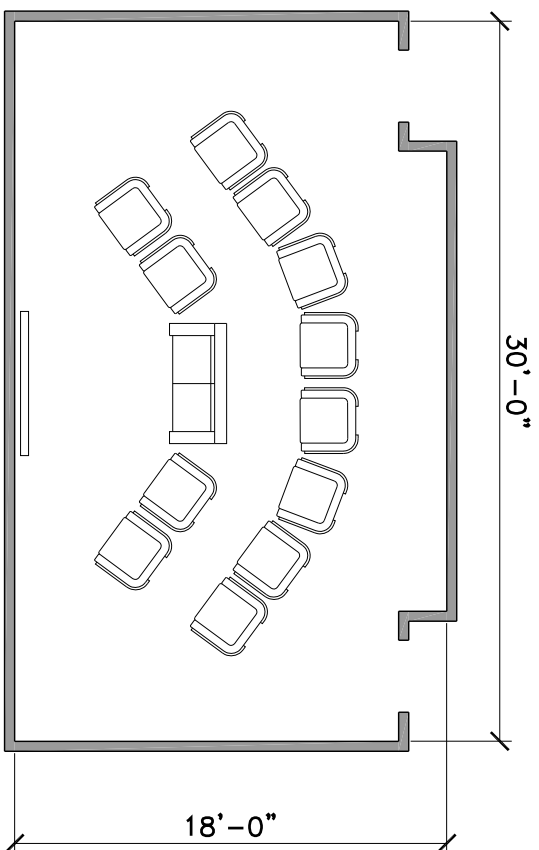
JUNE 2011	TITLE OF PROJECT VISITOR CENTER SITE SELECTION STUDY
UNITED STATES DEPARTMENT OF THE INTERIOR NICODEMUS NATIONAL HISTORIC LANDMARK	TITLE OF DRAWING PROGRAMMING SKETCHES - VISITOR CENTER
NICODEMUS NATIONAL HISTORIC LANDMARK	NAME OF PARK NICODEMUS NATIONAL HISTORIC LANDMARK
REGION MIDWEST	COUNTY GRAHAM
STATE KANSAS	STATE KANSAS



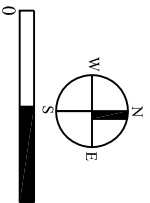
C Bookstore
 Scale: 1/4" = 1'-0"
 180 sf (total)



B Restrooms / Janitor
 Scale: 1/4" = 1'-0"
 460 sf (total)



A AV/Video
 Scale: 1/4" = 1'-0"
 540 sf (total)



JUNE 2011	TITLE OF PROJECT VISITOR CENTER SITE SELECTION STUDY
UNITED STATES DEPARTMENT OF THE INTERIOR NICODEMUS NATIONAL HISTORIC LANDMARK	TITLE OF DRAWING PROGRAMMING SKETCHES - VISITOR CENTER
	NAME OF PARK NICODEMUS NATIONAL HISTORIC LANDMARK
MIDWEST REGION	COUNTY GRAHAM
	STATE KANSAS