



Expand Existing Transit Maintenance Facility Environmental Assessment

Winter 2012 Public Scoping

Harpers Ferry National Historical Park (the park) is proposing to improve and expand the existing transit maintenance facility. The existing facility provides shelter and maintenance for six passenger buses and includes a single office and storage area for the bus mechanic. The bus fleet provides public transportation from the park's visitor center to other areas throughout the park. As park attendance has continued to increase so has use of the bus transit system and the number of buses needed.

Purpose and Need for Action

The transit maintenance facility was constructed in 1992 and is generally in poor condition. The facility does not meet current industry safety standards and building codes or the park's existing and future transit maintenance needs. Although the facility was originally designed as a parking facility for buses, the building currently serves as both a bus storage and maintenance facility. Some basic facility features such as building accessibility, a security system, restrooms, additional storage areas, office and meeting space, an employee break room and lockers, a loading dock, vehicle access/egress, vehicle wash station, site and building drainage, lighting, and utilities are inadequate or completely lacking. In addition, the existing facility can store six vehicles and the current fleet is ten, leaving four vehicles exposed to the elements, thereby potentially reducing their operational lifespan. Thus the facility needs to be expanded and improved to meet the increased demands on the transportation fleet and to be fully functional as a bus garage, storage area, fuel depot, and an employee work place.

The idea to expand the transit maintenance facility is consistent with the 2010 General Management Plan for the park, as well as the 2012 Alternative Transportation Systems Plan, which, when implemented will expand the transportation system in the park.

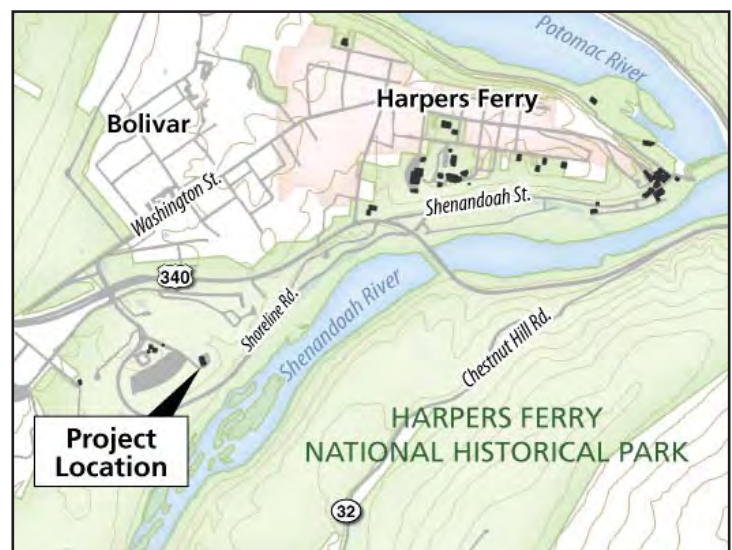
Project Objectives

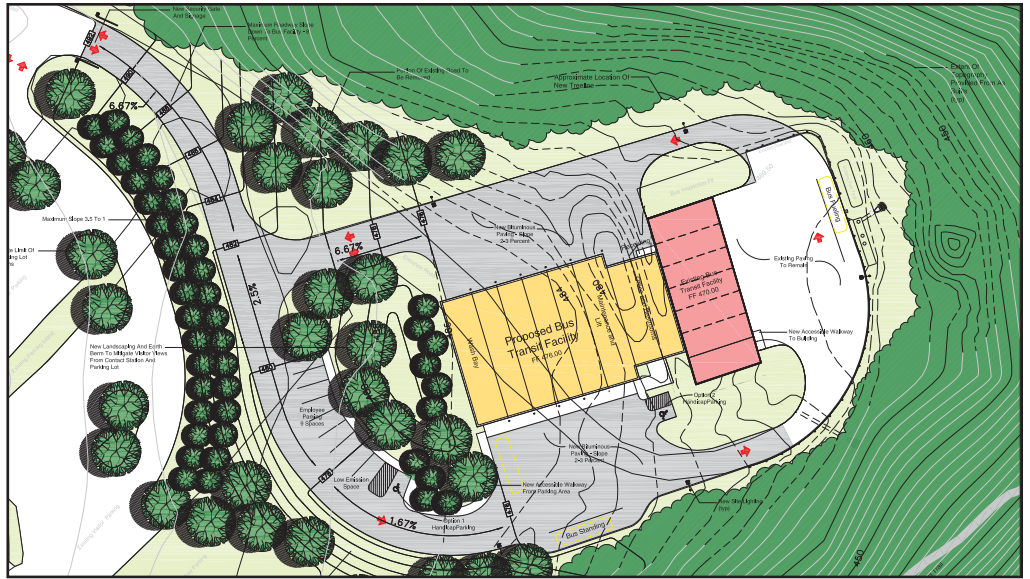
- Minimize safety risks for vehicles and workers/pedestrians
- Provide a logical sequence of bus circulation and operations
- Maintain a low visual impact to the surrounding viewsheds
- Allow for future expansion of the facility, if needed
- Utilize existing site location to the greatest extent possible
- Minimize construction impact on ongoing park and transit operations



Project Area

The Harpers Ferry transit maintenance facility is located in Harpers Ferry, West Virginia within the boundary of the Harpers Ferry National Historical Park. Its location within the park is an area known as Cavalier Heights, which also includes the park's visitor center. The project area is accessed via the existing visitor center entrance road. A vegetated earth berm helps screen views of the facility from the visitor center and associated parking lot. The project area includes the existing maintenance facility/bus barn, bus maintenance pit, fuel tank area, paved parking, and access road.





Conceptual sketch of the proposal.

Project Schedule

The NPS is preparing an Environmental Assessment (EA) that will evaluate the environmental effects of this proposal to improve and expand the existing transit maintenance facility. The EA process is expected to take several months to complete. A summary of the process and anticipated timeframe are shown in the table below. We are currently in the scoping phase of this project and are seeking public input on the proposal. Comments received during this initial scoping period will be used to help define the issues and concerns to be addressed in the EA. There will also be another opportunity to comment when the EA is completed.

We welcome your input on the transit maintenance facility project. To share your thoughts, ideas, and concerns with us, we encourage you to comment electronically via the NPS website at <http://parkplanning.nps.gov/hafe>. You are also welcome to mail comments directly to the park at:

Harpers Ferry National Historical Park
P.O. Box 65
485 Fillmore Street
Harpers Ferry, WV 25425

Your comments would be most helpful to us if we receive them no later than March 9, 2012.

Before including your address, phone number, e-mail address, or other personal identifying information in your comment, you should be aware that your entire comment, including personal identifying information, may be made publicly available at any time. Although you can ask us in your comment to withhold your personal identifying information from public review, we cannot guarantee that this will be possible.



Timeframe	Planning Activity
February 2012	Conduct Public Scoping
April - July 2012	Prepare Environmental Assessment
July 2012	Public Review of the Environmental Assessment
August 2012	Analysis of Public Comments
October 2012	Preparation of the Decision Document