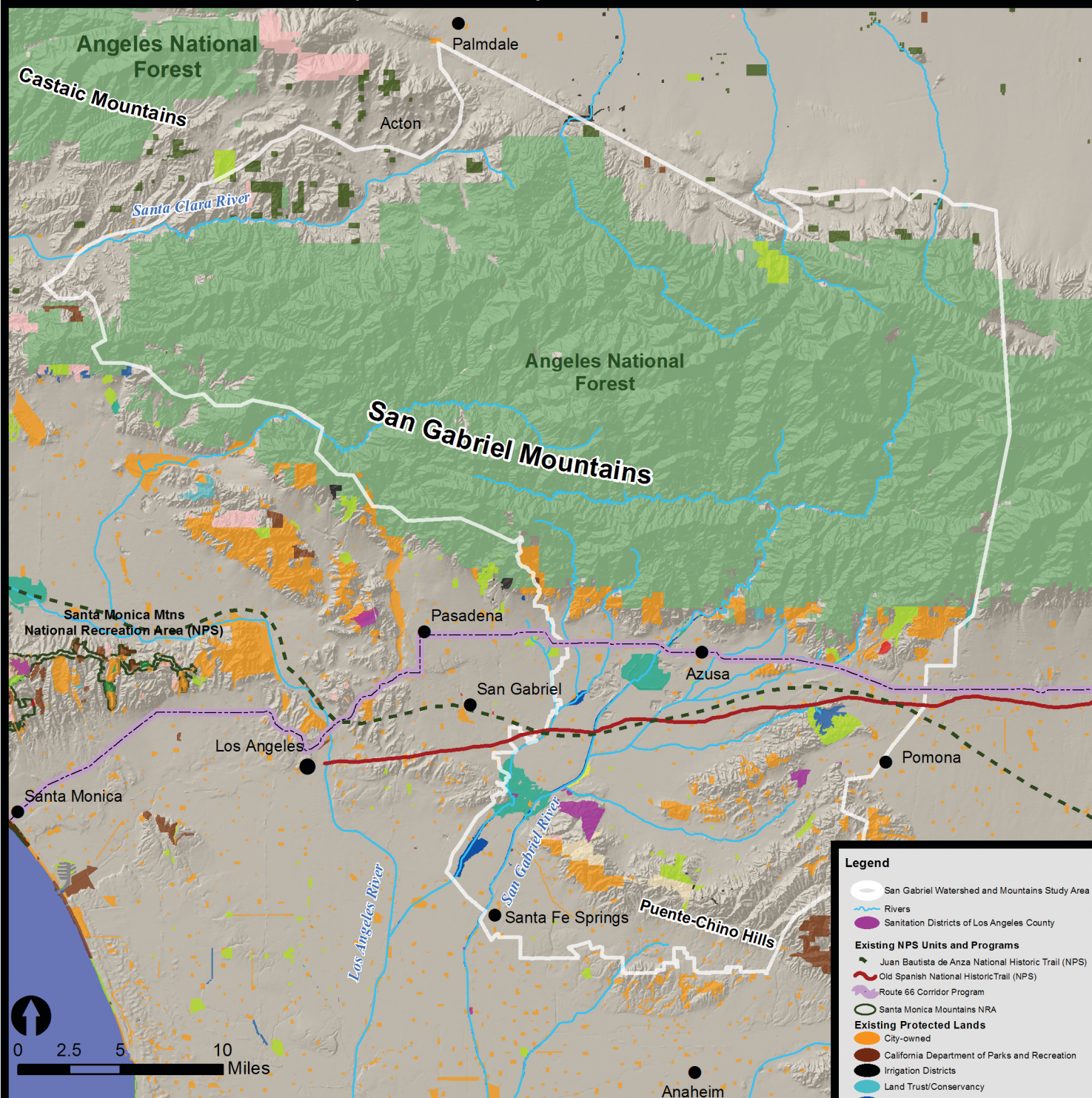


Continuation of Current Management (No Action)

San Gabriel Watershed and Mountains Special Resource Study



Continuation of Current Management Highlights

Current programs and policies of existing federal, state, county, and non-profit conservation organizations would remain in place.

Current conditions and trends would continue.

No new unit of the national park system would be established.

National Park Service, Pacific West Regional Office

Updated August 2011

The NPS makes no warranty, express or implied, related to the accuracy or content of this map.

Sources: Existing Protected Lands, California Protected Areas Database (June 2010), Proposed Alternatives and Study Area (NPS), Rivers (National Hydrography Dataset, USGS).