

# PROGRESS PRINT

DECEMBER 02, 2008

## NORTH ELEVATION

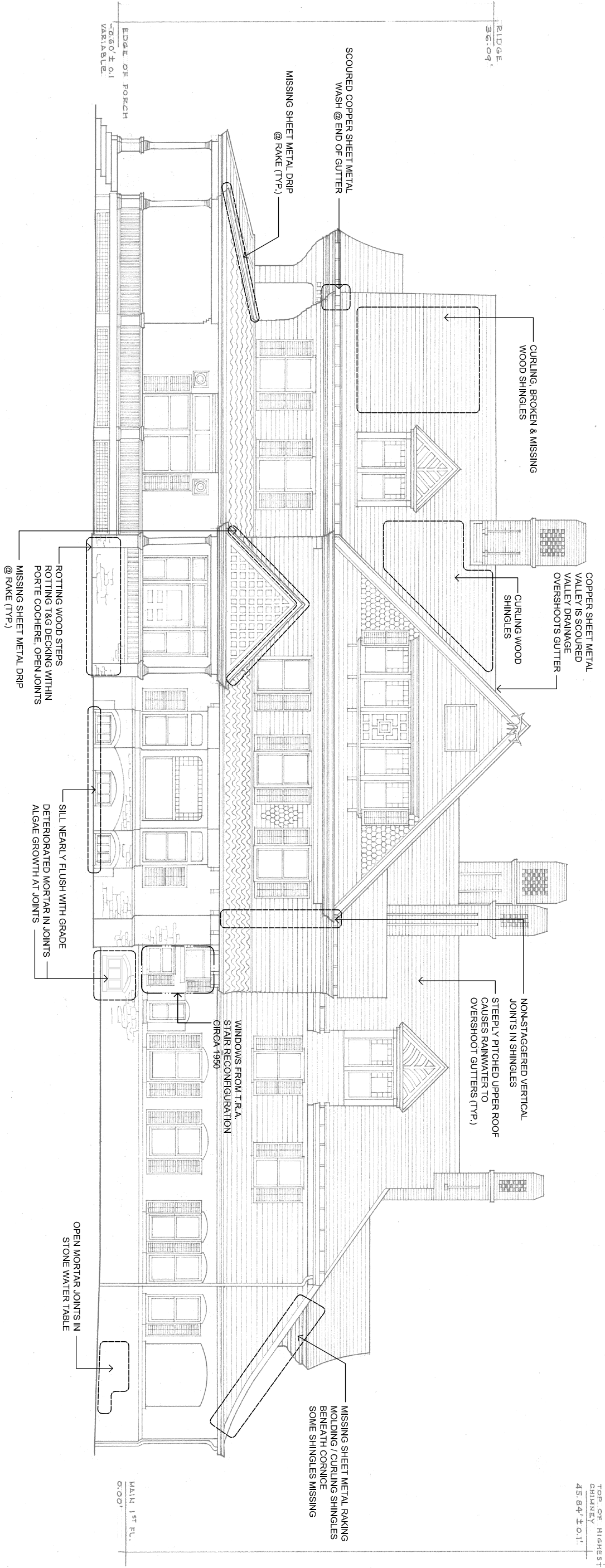
EXISTING CONDITIONS SURVEY  
SAGAMORE HILL

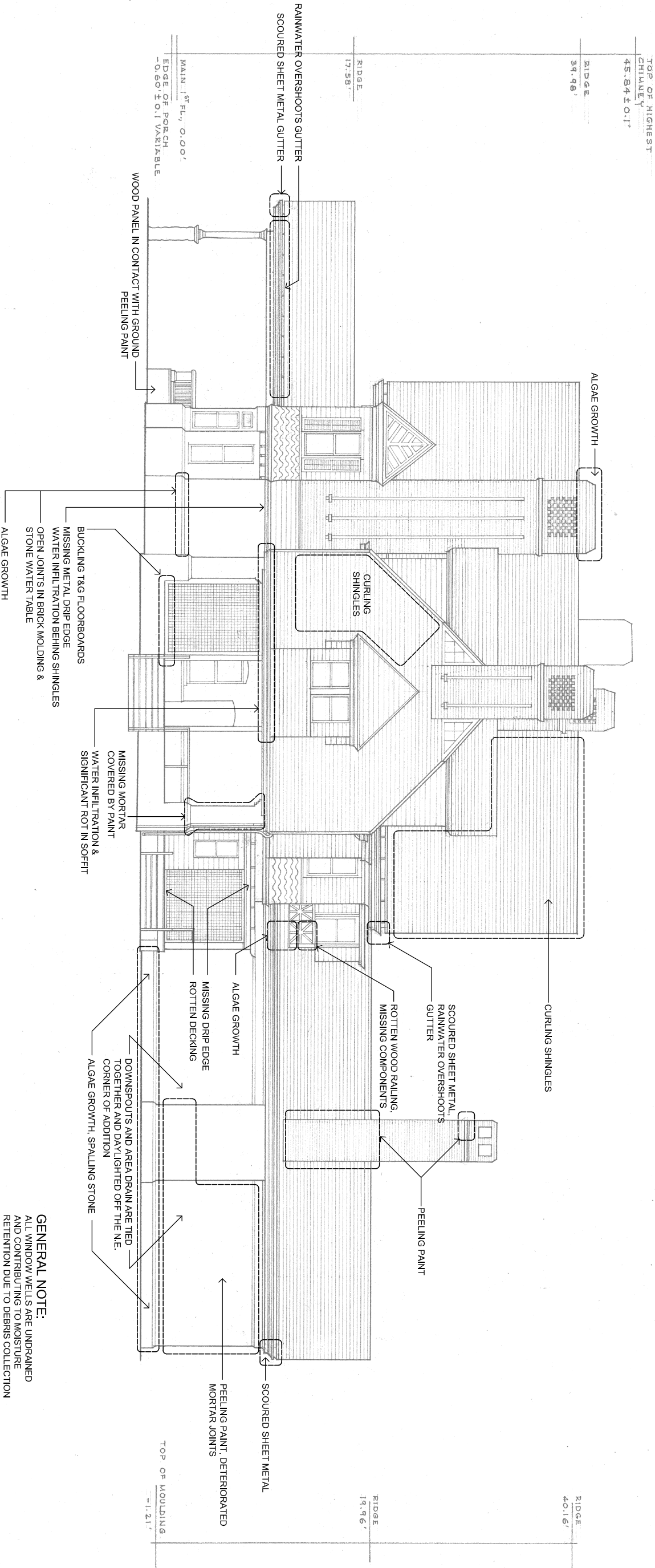
# PROGRESS PRINT

DECEMBER 02, 2008

## SOUTH ELEVATION

### EXISTING CONDITIONS SURVEY SAGAMORE HILL





GENERAL NOTE:  
ALL WINDOW WELLS ARE UNDRAINED  
AND CONTRIBUTING TO MOISTURE  
RETENTION DUE TO DEBRIS COLLECTION

# PROGRESS PRINT

DECEMBER 02, 2008

## EAST ELEVATION

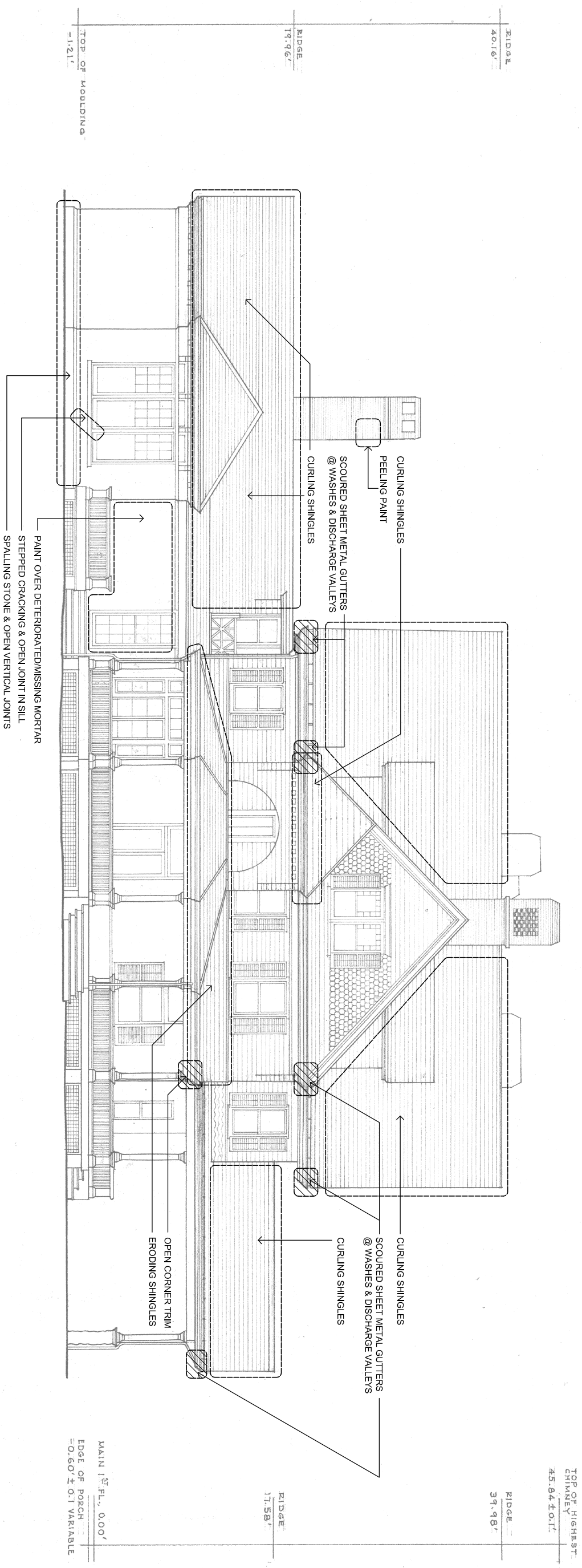
EXISTING CONDITIONS SURVEY  
SAGAMORE HILL

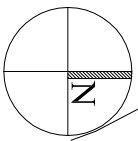
PROGRES PRINT  
DECEMBER 02, 2008

## WEST ELEVATION

# EXISTING CONDITIONS SURVEY

## SAGAMORE HILL





PROGRESS PRINT  
DECEMBER 02, 2008

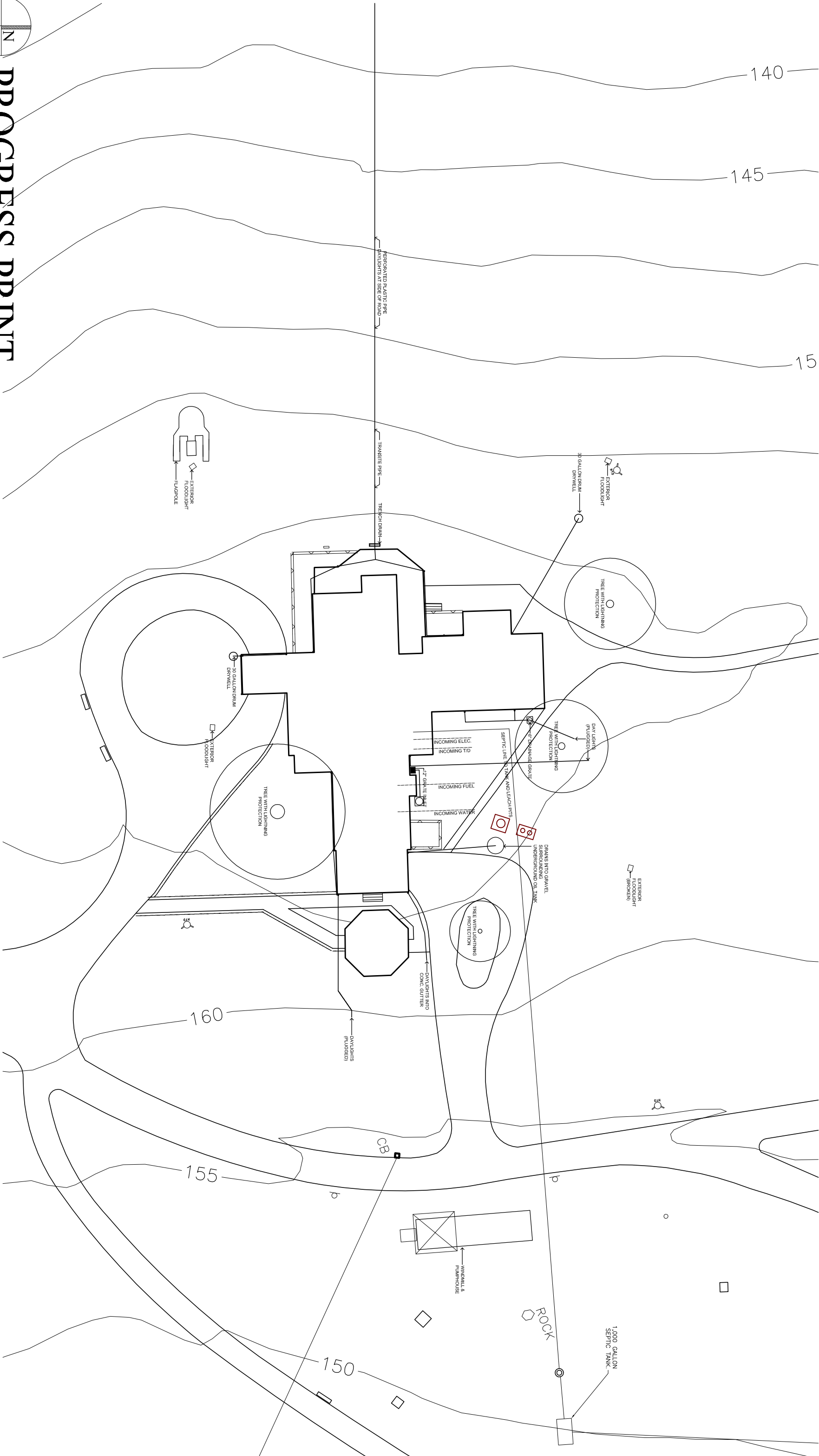
DECEMBER 02, 2008

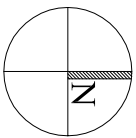
## SITE PLAN

$$\overline{1/32'' = 1'-0''}$$

## EXISTING CONDITIONS SURVEY

**SAGAMORE HILL**





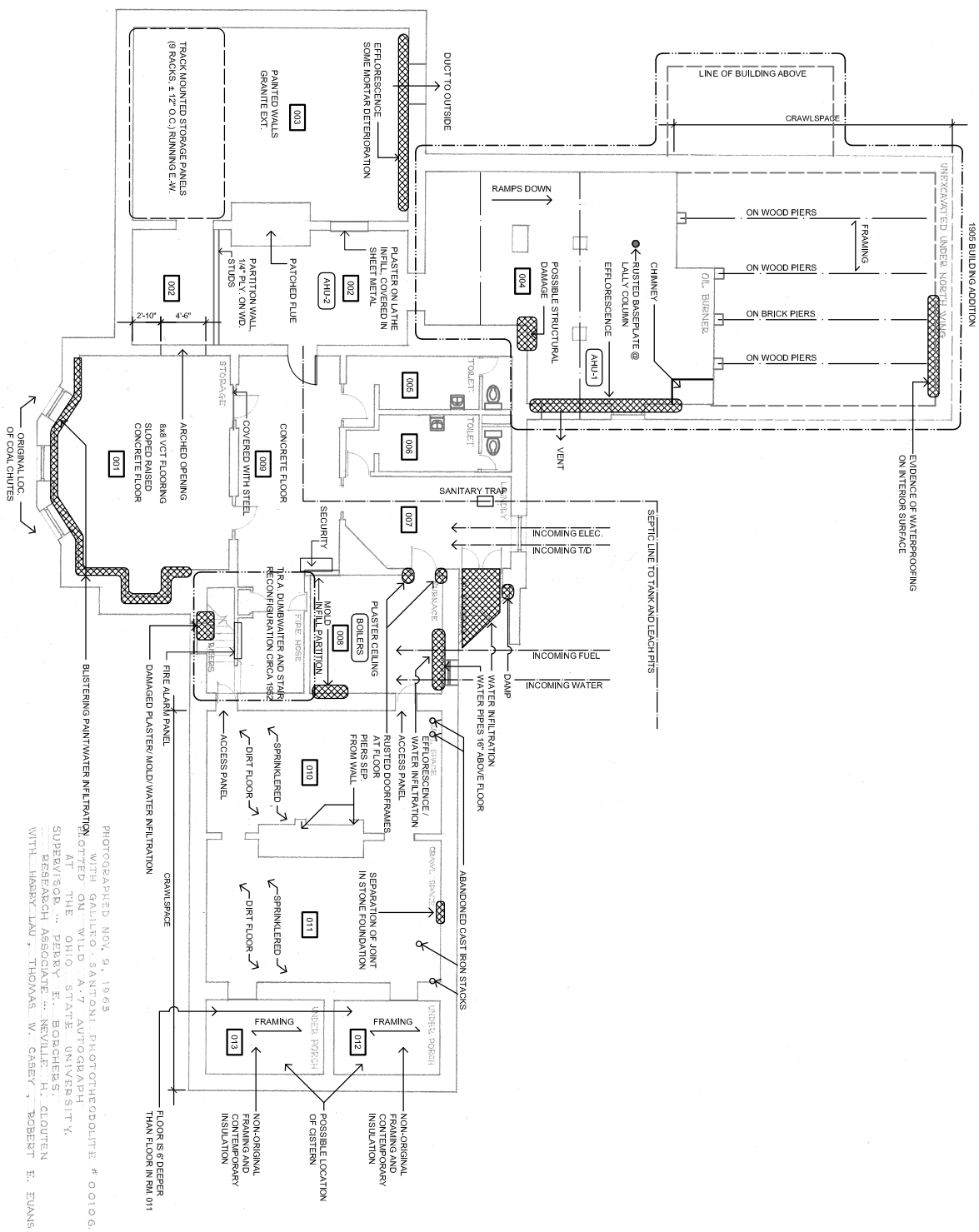
PROGRES PRINT  
DECEMBER 02, 2008

## BASEMENT PLAN

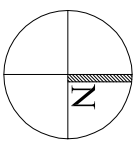
$$1/16'' = 1'-0''$$

# EXISTING CONDITIONS SURVEY

## SAGAMORE HILL





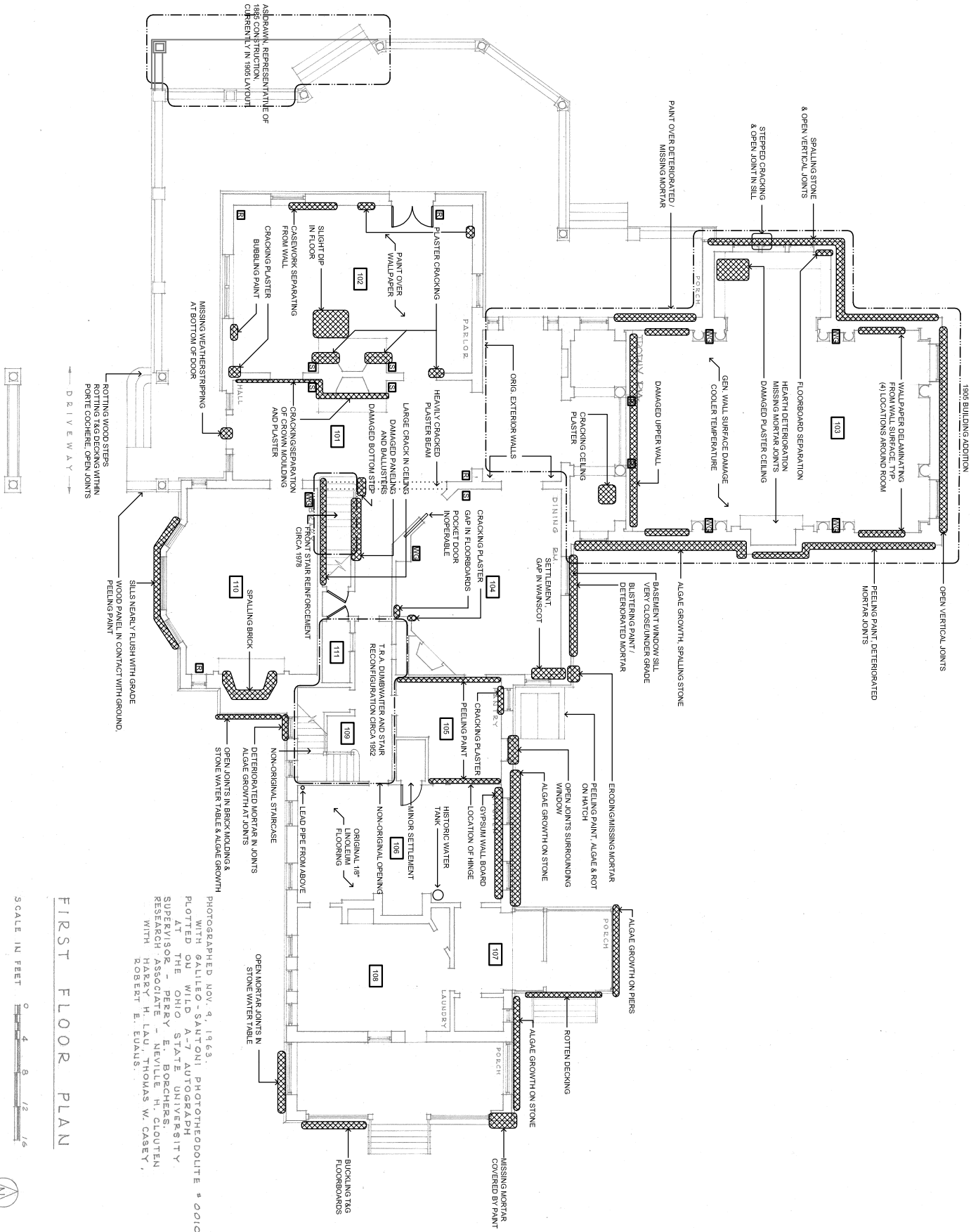


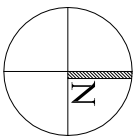
PROGRESS PRINT  
DECEMBER 02, 2008

## FIRST FLOOR PLAN

$$1/16'' = 1'-0''$$

**EXISTING CONDITIONS SURVEY**  
**SAGAMORE HILL**



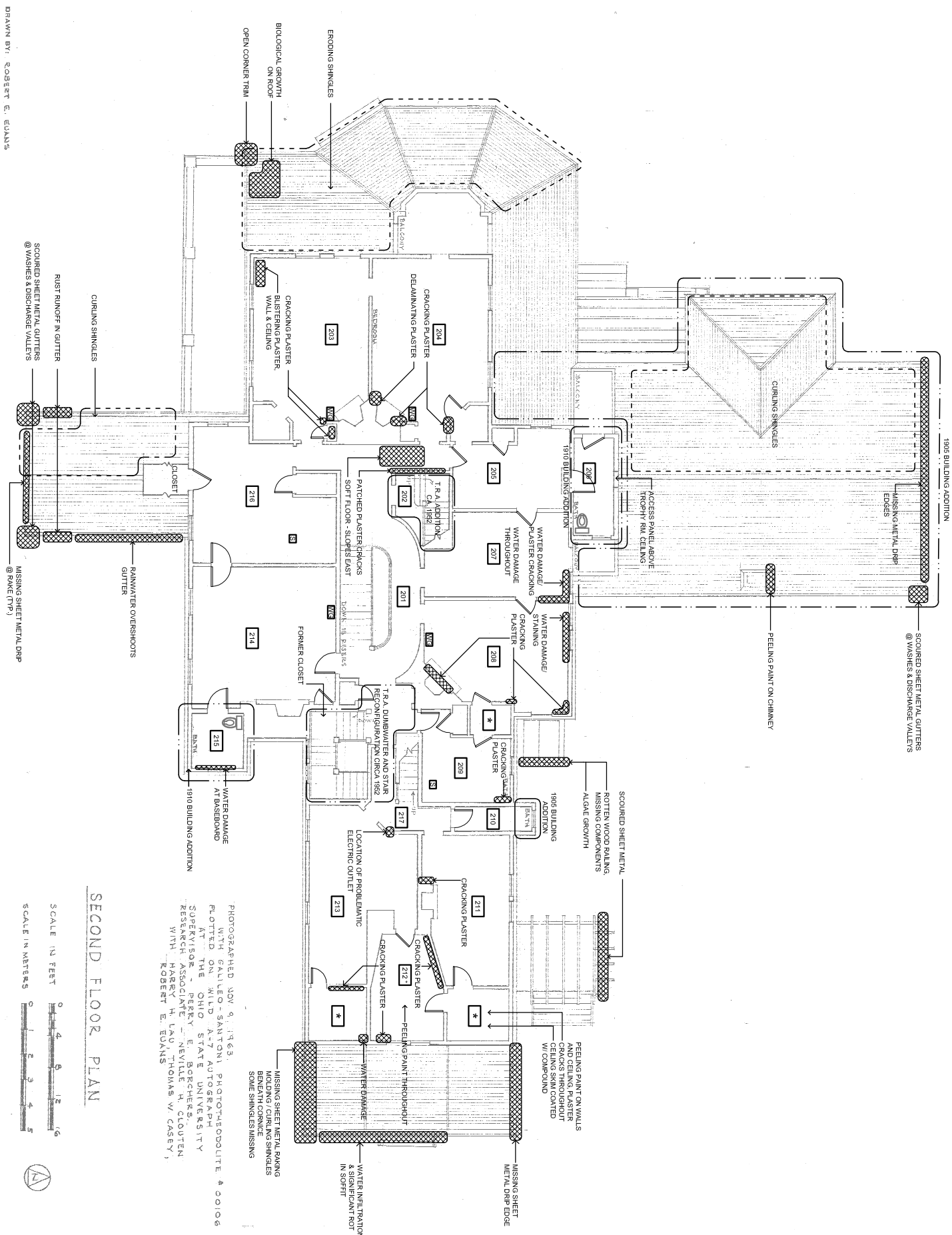


PROGRES PRINT  
DECEMBER 02, 2008

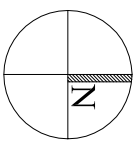
## SECOND FLOOR PLAN

$$1/16'' = 1'-0''$$

# EXISTING CONDITIONS SURVEY SAGAMORE HILL





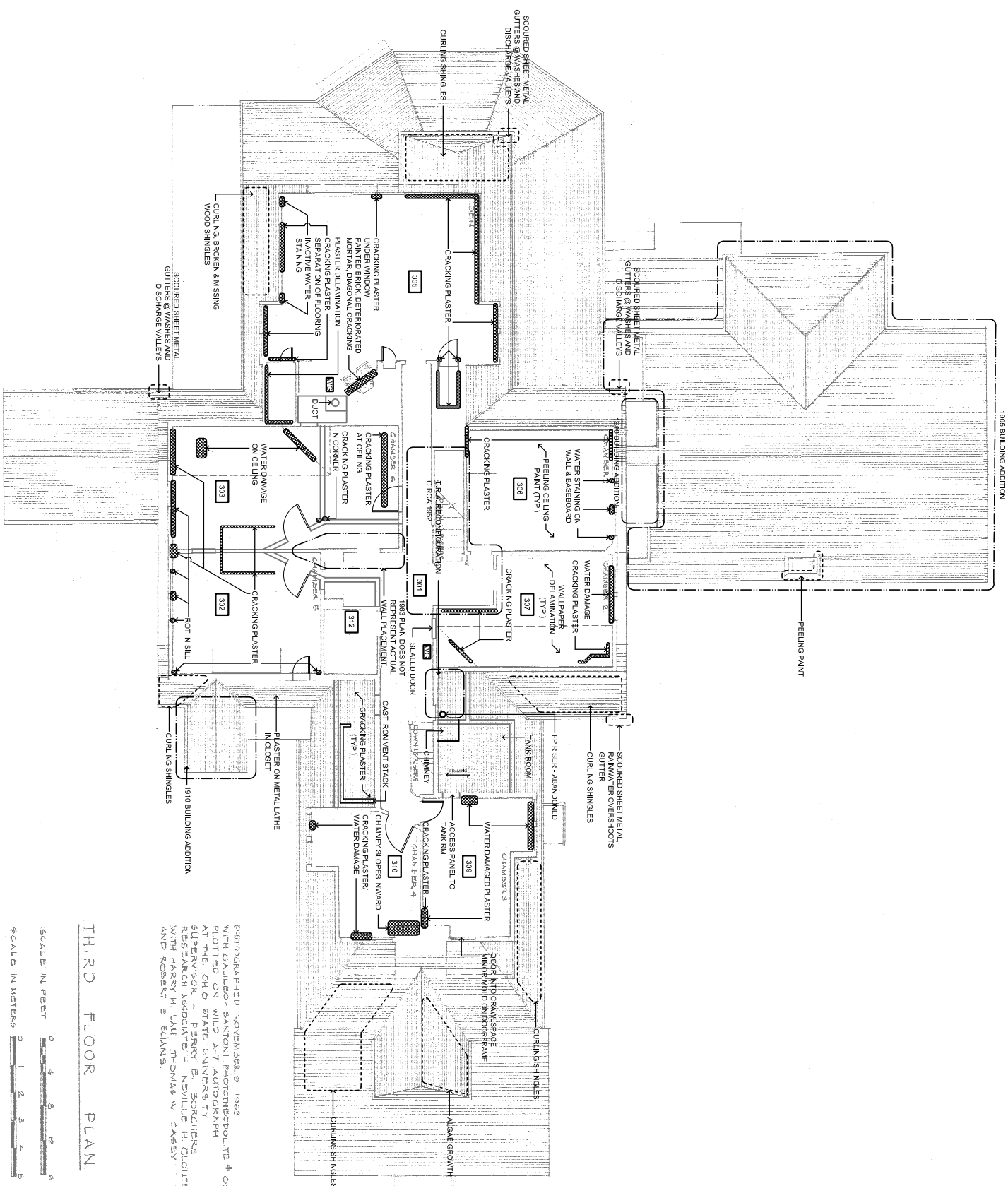


PROGRES PRINT  
DECEMBER 02, 2008

### THIRD FLOOR PLAN

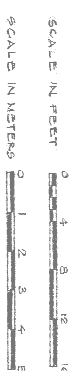
 $1/16" = 1'-0"$ 

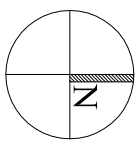
**EXISTING CONDITIONS SURVEY**  
**SAGAMORE HILL**



THIRD FLOOR AND

PHOTOGRAPHED NOVEMBER 9, 1963  
WITH GALILEO - SANTONI PHOTOGRAPHIC, THE # 00108  
PLOTTER ON WILD A-7 AUTOCORRAPH  
AT THE OHIO STATE UNIVERSITY  
SUPERVISOR - PERRY E. BORCHERS  
RESEARCH ASSOCIATE - NEVILLE H. CLOUTEN  
WITH HARRY H. LAU, THOMAS W. CASEY  
AND ROBERT E. ELANS.



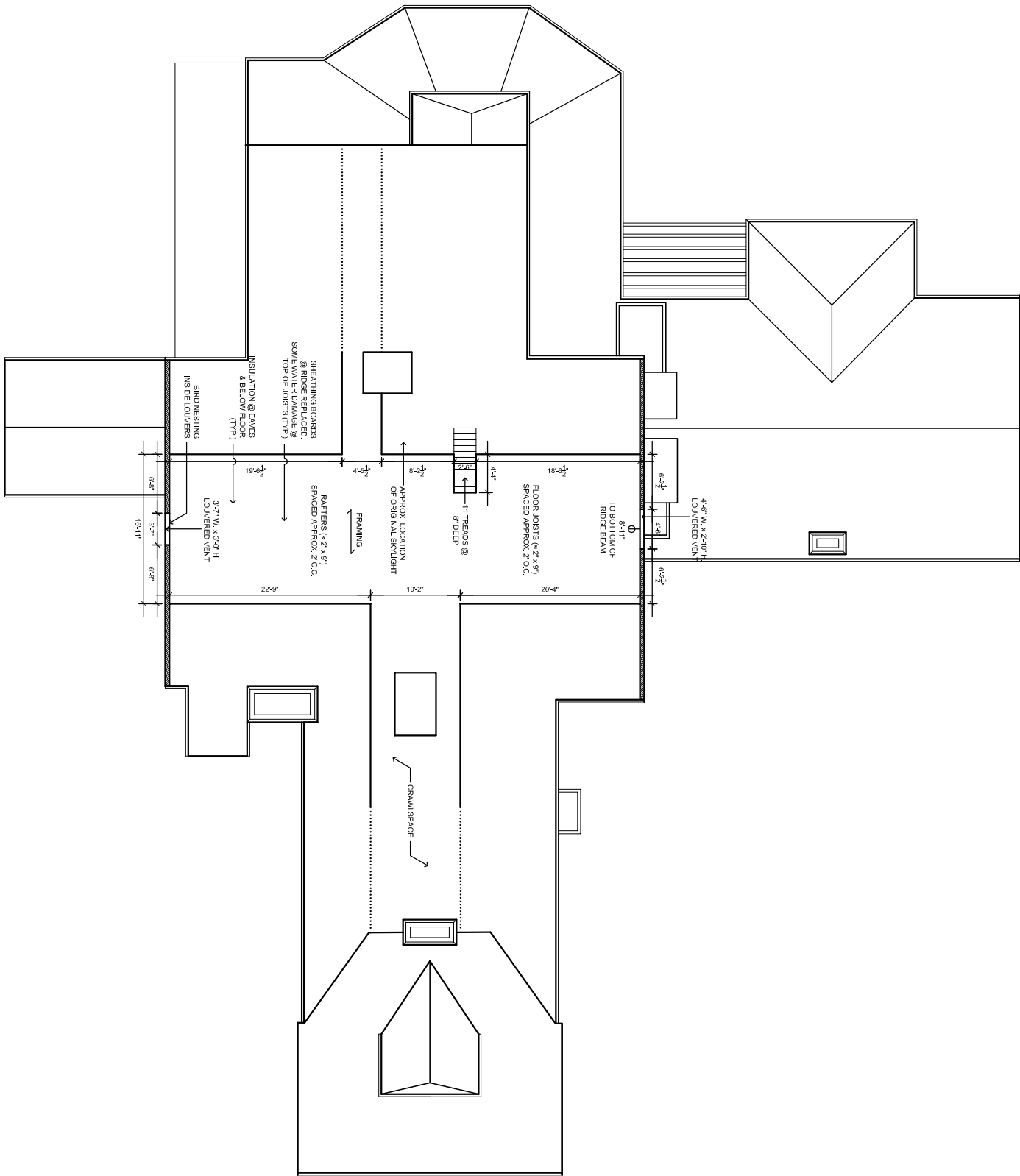


# PROGRESS PRINT

DECEMBER 02, 2008

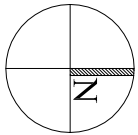
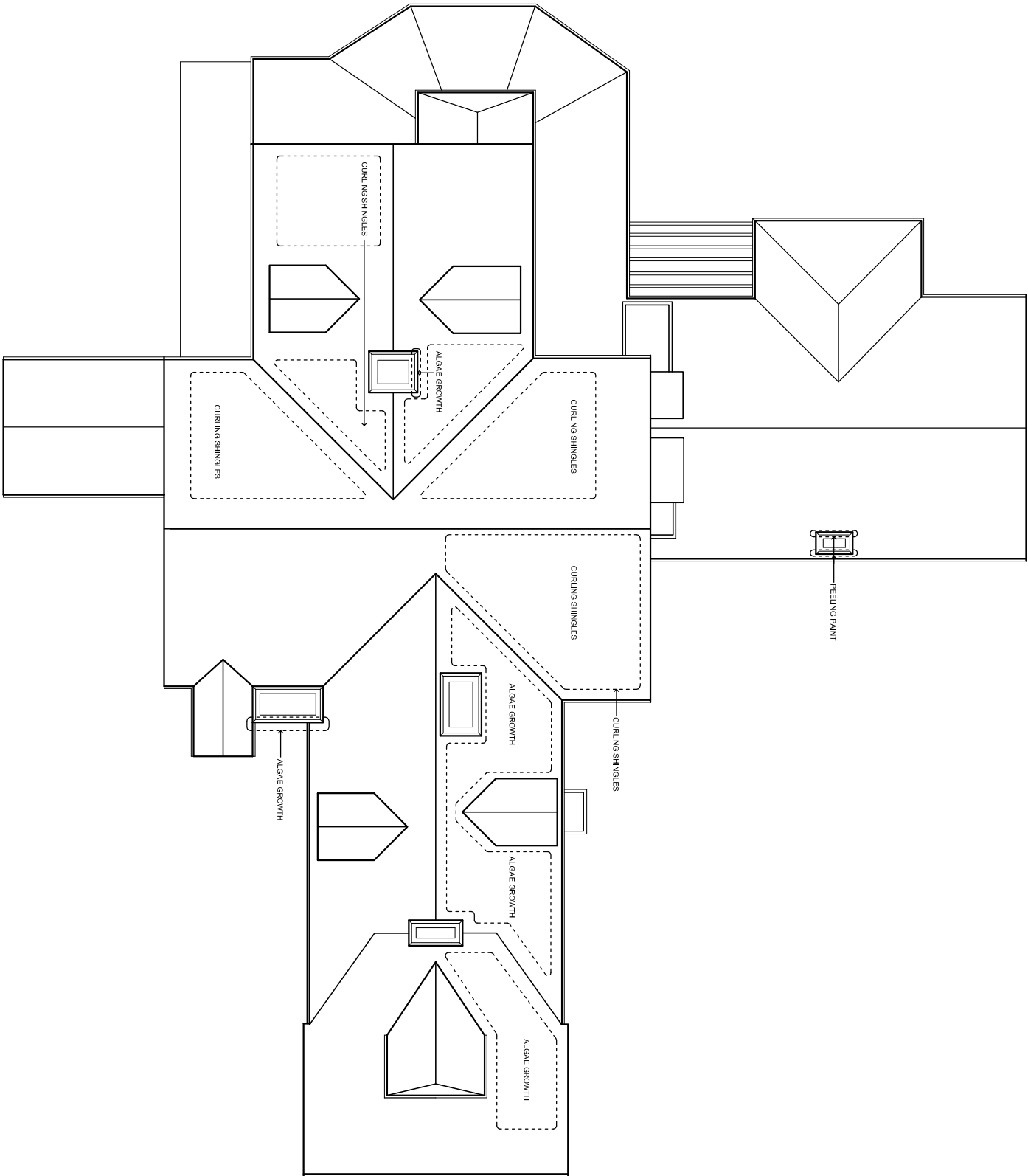
## FOURTH FLOOR PLAN (ATTIC)

1/16" = 1'-0"



## EXISTING CONDITIONS SURVEY

SAGAMORE HILL



# PROGRESS PRINT

DECEMBER 02, 2008

ROOF PLAN  
1/16" = 1'-0"

EXISTING CONDITIONS SURVEY  
SAGAMORE HILL