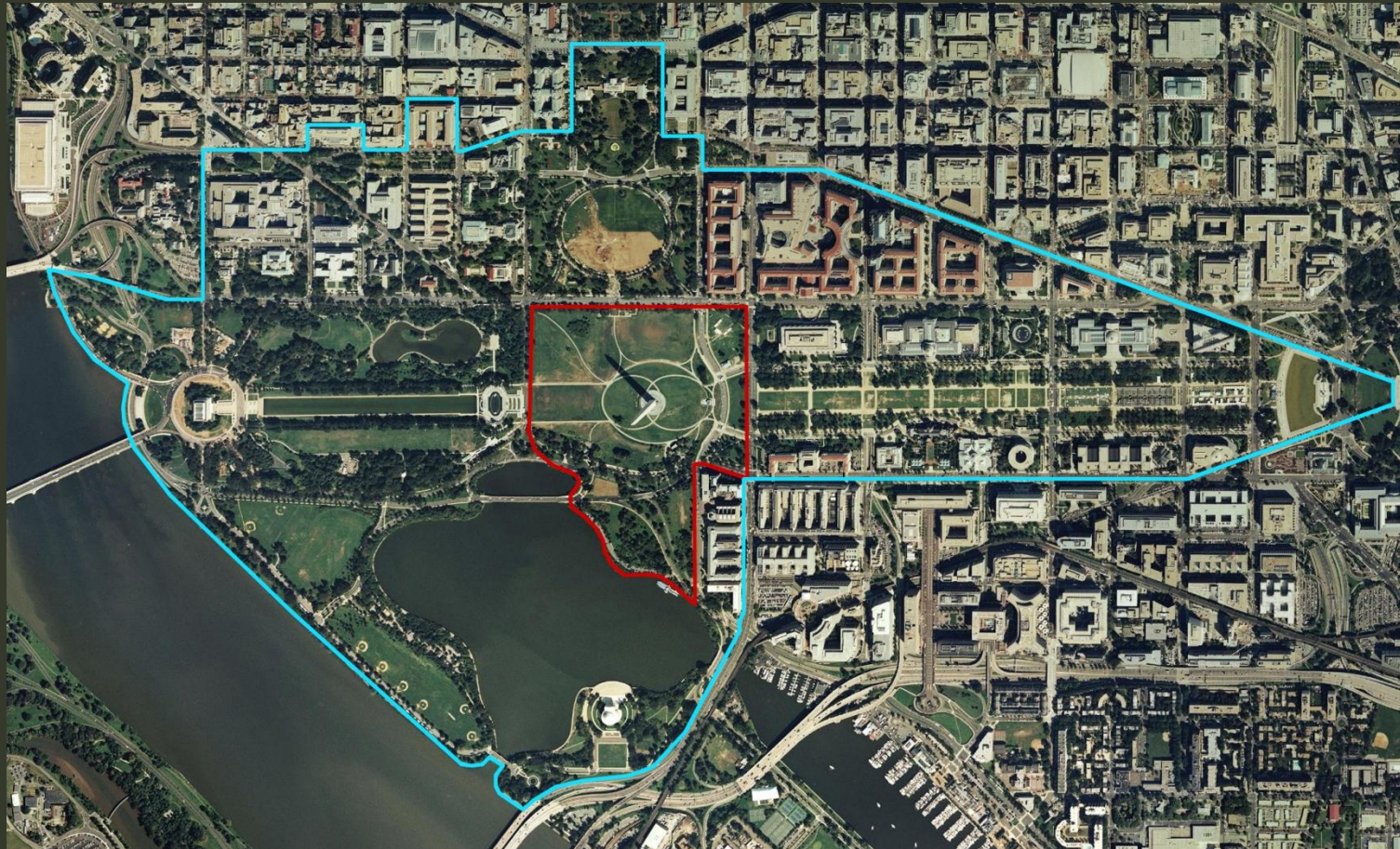




HISTORIC RESOURCES IN THE AREA OF POTENTIAL EFFECTS

Washington Monument Visitor Security Screening

Draft Areas of Potential Effect



Legend

- Primary APE
- Secondary APE

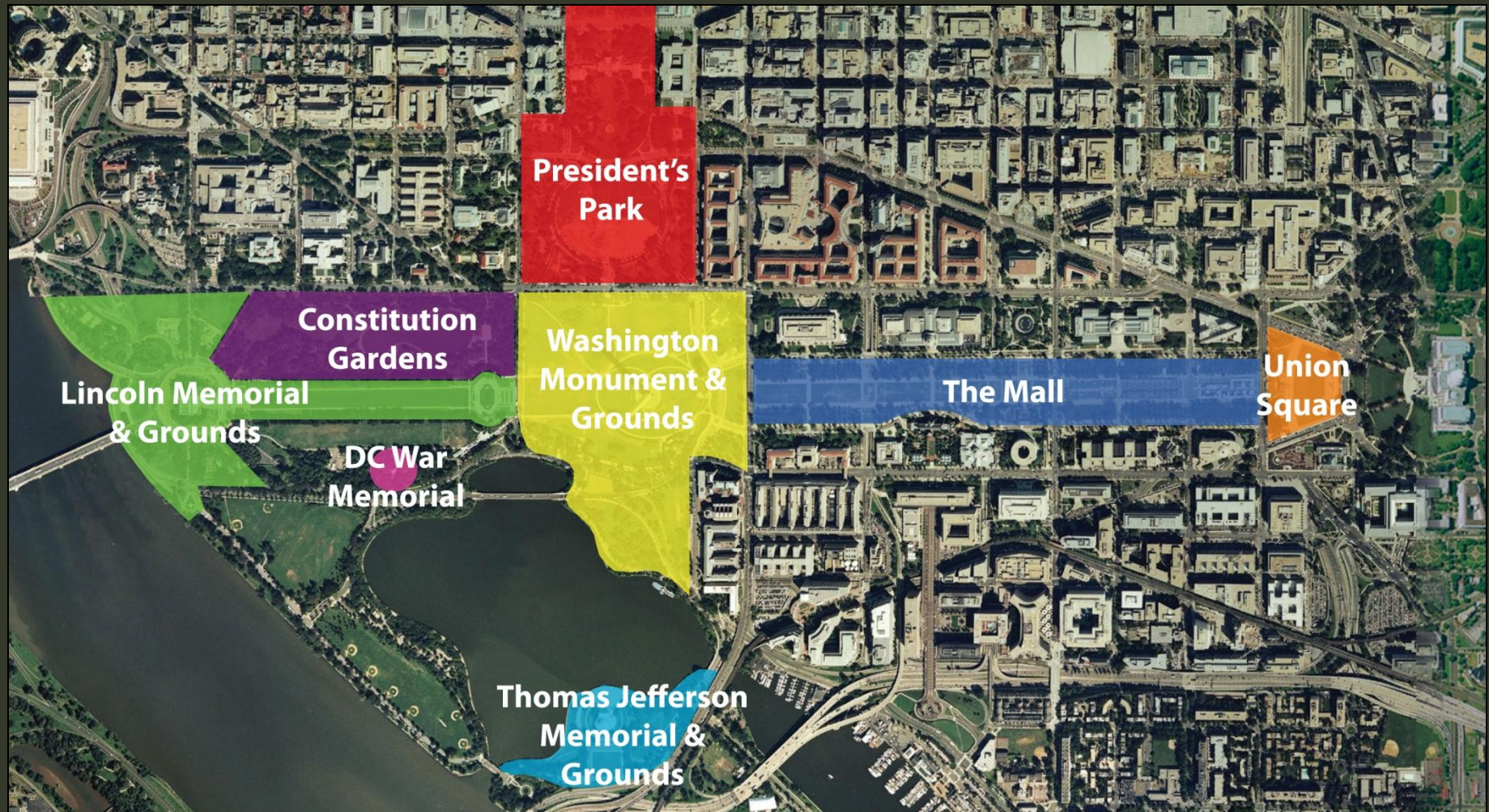
Identification of Historic Resources

NATIONAL REGISTER HISTORIC DISTRICTS



Identification of Historic Resources

CULTURAL LANDSCAPES



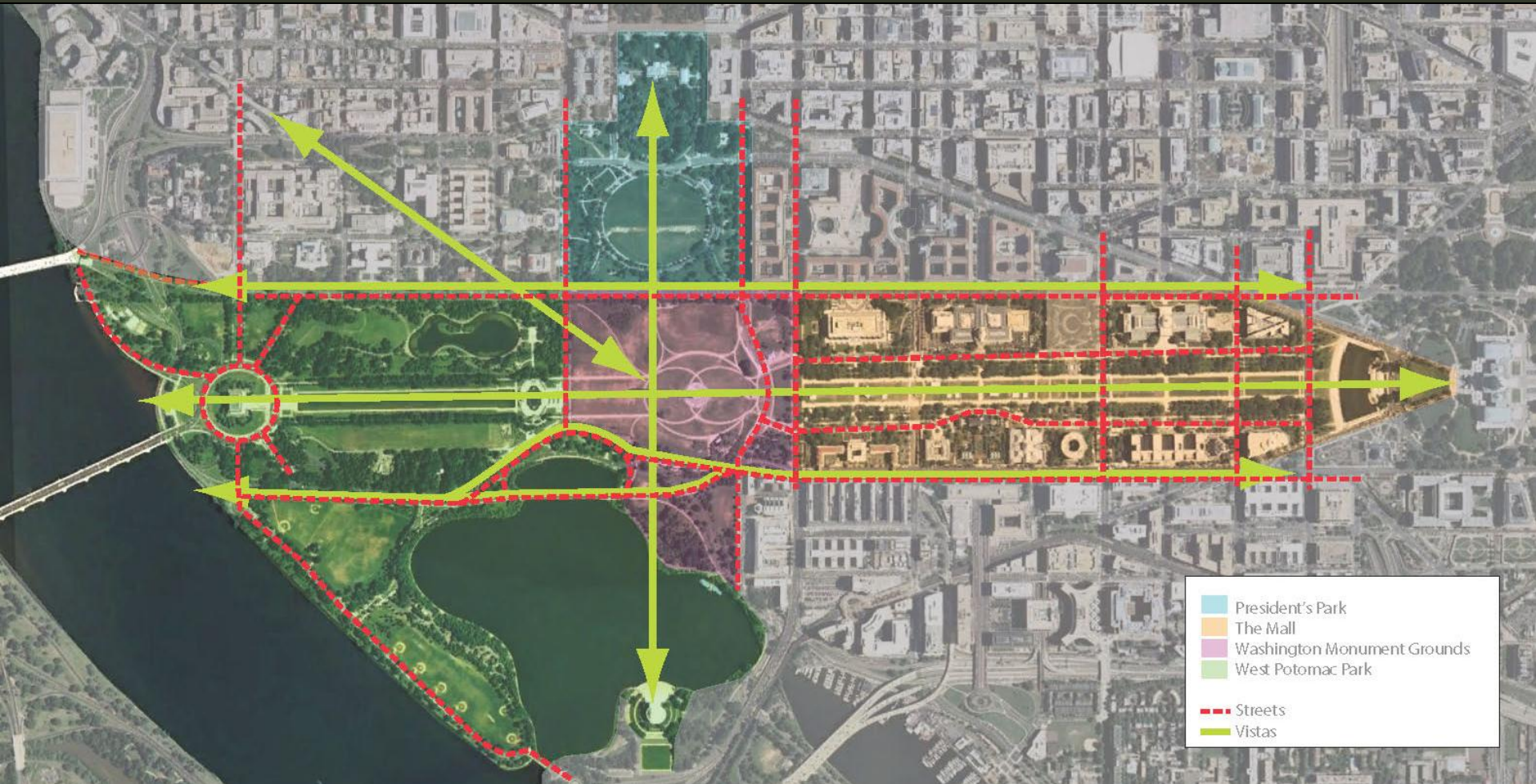
Identification of Historic Resources

INDIVIDUALLY LISTED HISTORIC PROPERTIES



Identification of Historic Resources

PLAN OF THE CITY OF WASHINGTON CONTRIBUTING RESOURCES



Washington Monument Significance

National Register of Historic Places Nomination Form (1981)

Areas of Significance

- Architecture
- Engineering
- Landscape Architecture
- Other (commemoration)

Period of Significance

- 1848-1889

Statement of Significance

“The Washington Monument is significant as the nation’s foremost memorial to ... George Washington, as a major example of 19th century Egyptian Revival architecture, and as a notable example in structural engineering for its period.”



Washington Monument Significance

Washington Monument and Associated Structures: Historic Structures Report (HSR), June 2004

Satisfies National Register Criterion C within the area of architecture

- as an example of the early-nineteenth-century movement to commemorate prominent Americans
- as an embodiment of the principles of Egyptian Revival architecture
- as an engineering milestone
- for its association with Robert Mills and Thomas Lincoln Casey

Satisfies Criterion Consideration F (Commemorative Properties)

- for its design, age, tradition, and symbolic value

Period of Significance

- 1848-1914 (expanded to incorporate construction of marble wainscoting and terrazzo floors in first-floor lobby)

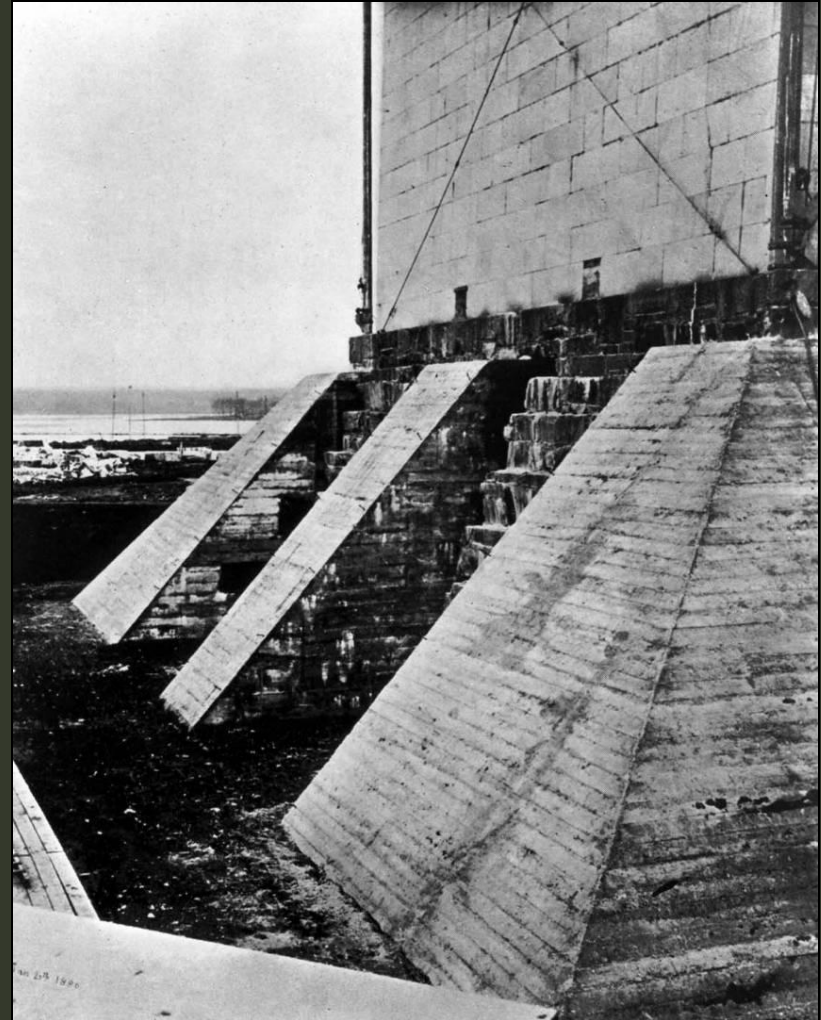


Existing Monument Features Dating to the Period of Significance

Washington Monument HSR

Exterior

- blue gneiss and concrete foundation
- first construction period exterior walls (1848-1858, to 150 feet) – random bond, smooth dressed, coursed ashlar marble
- second construction period exterior walls (1880-1885, 150-foot level to top) – Flemish bond, solid dressed, coursed ashlar marble; marble double doors

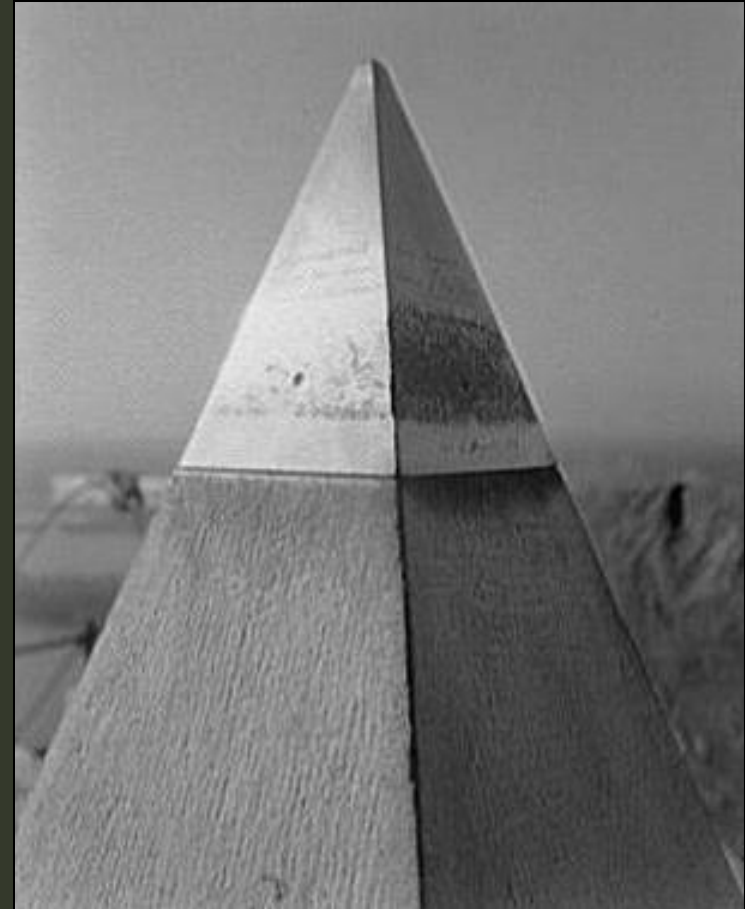


Existing Monument Features Dating to the Period of Significance

Washington Monument HSR

Exterior

- pyramidion – running bond, coursed ashlar marble; solid marble capstone with inscribed cast aluminum tip; two observation window openings on each face
- below-grade mechanical area (Bunker 1) – located on site of the Monument's original engine room on a partial foundation of blue gneiss; expanded by half (600 to 900 square feet) in 1958; some historic finishes remain



Existing Monument Features Dating to the Period of Significance

Washington Monument HSR

Interior

Entry level

- east portal: marble walls and ceiling
- east elevator lobby: marble and gneiss east wall, including door surround and graffiti
- south corridor: two Phoenix columns; plaster walls, marble chair rail, wainscot, and base; terrazzo floor
- west elevator lobby: plaster walls, marble chair rail, wainscot, and base; terrazzo floor
- west chamber: marble walls and ceiling, terrazzo floor



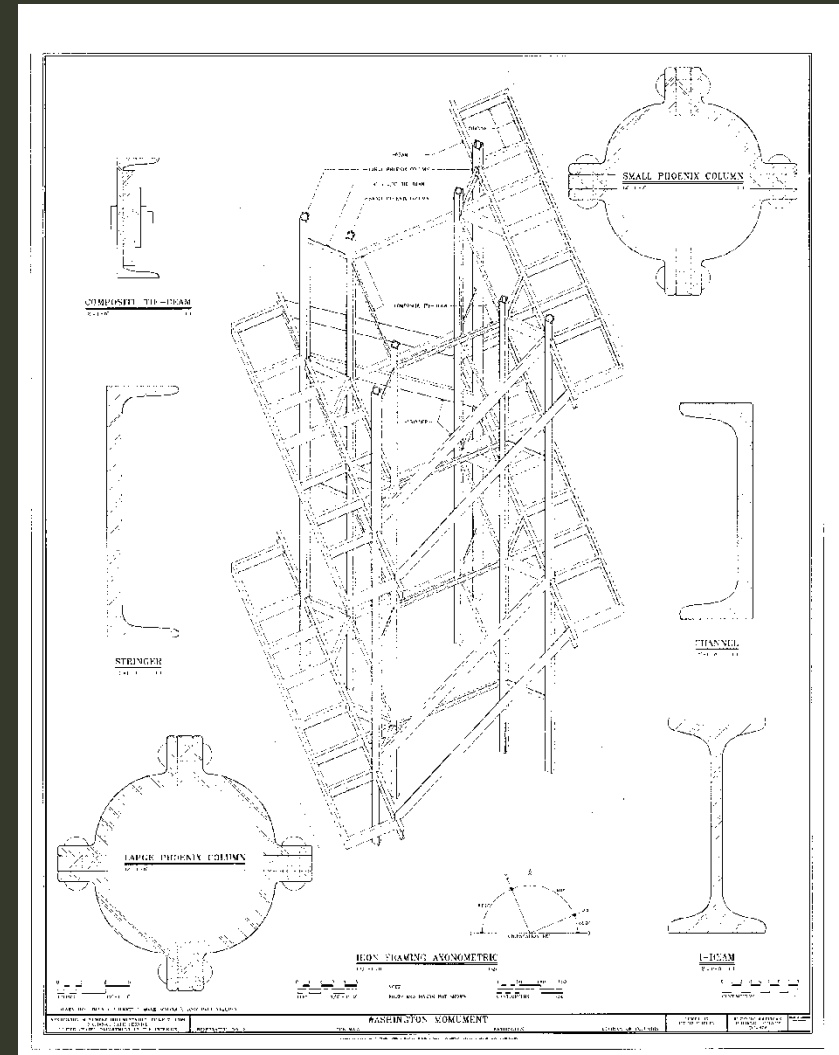
Existing Monument Features Dating to the Period of Significance

Washington Monument HSR

Interior

Iron Structure and Stair

- Two sets of Phoenix columns arranged in concentric squares
- Platforms and stairs
- Memorial stones
- 490- and 500-foot levels
- Marble walls and ribs
- Phoenix columns



Washington Monument Grounds Significance

Washington Monument Grounds Cultural Landscapes Inventory (CLI), 2009

- Eligible under National Register Criterion A within the areas of politics/government, social history, recreation, and commemoration
- Eligible under Criterion C within the areas of architecture, community planning and development, engineering, and landscape architecture
- Eligible under Criterion D, as it has yielded, or is likely to yield, information important to American prehistory or history
- Period of Significance
 - 1791-1943

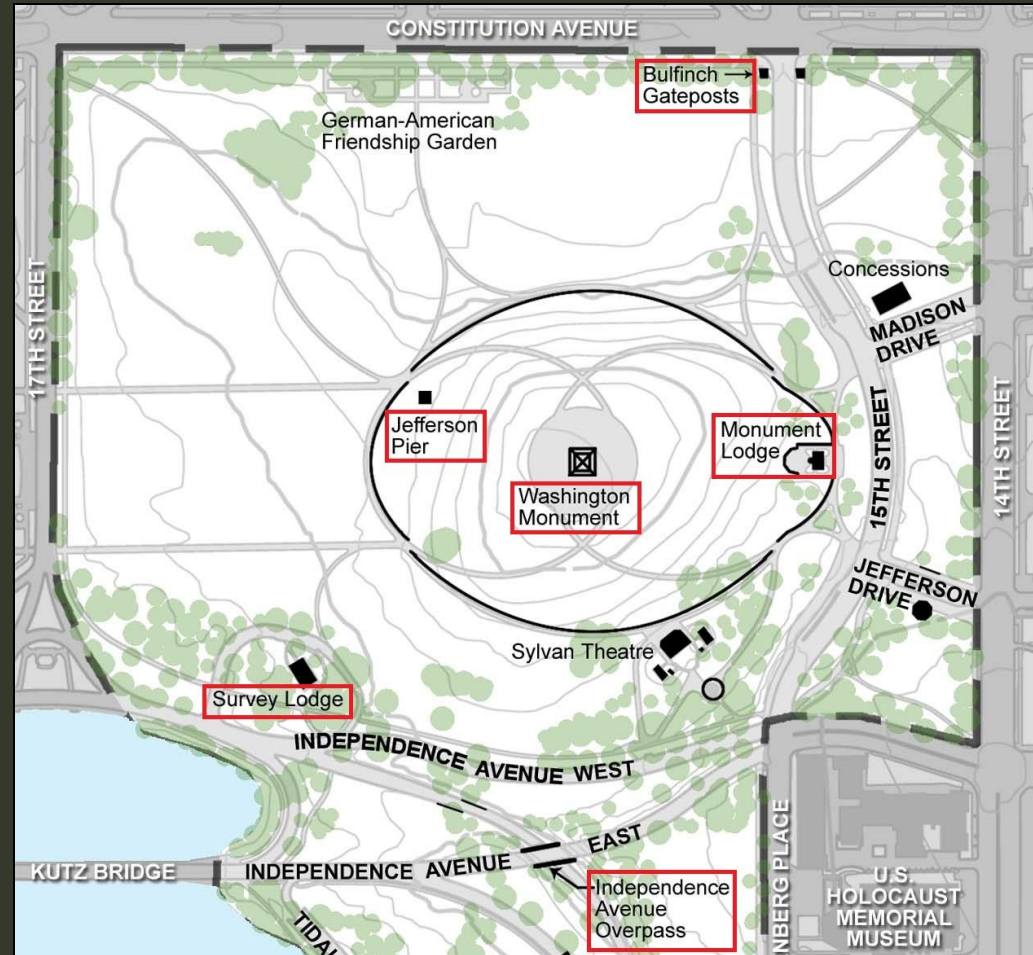


Contributing Landscape Features

Washington Monument Grounds CLI

Buildings and Structures

- Washington Monument
- Monument Lodge
- Survey Lodge
- Jefferson Pier Survey Marker
- Bulfinch gateposts
- Independence Avenue overpass



Contributing Landscape Features

Washington Monument Grounds CLI

Circulation

- 14th Street, 17th Street, and Constitution Avenue corridors, including sidewalks
- Independence and Maine Avenue corridors
- Tidal Basin parking lot corridor
- Tidal Basin walk
- Raoul Wallenberg Place corridor

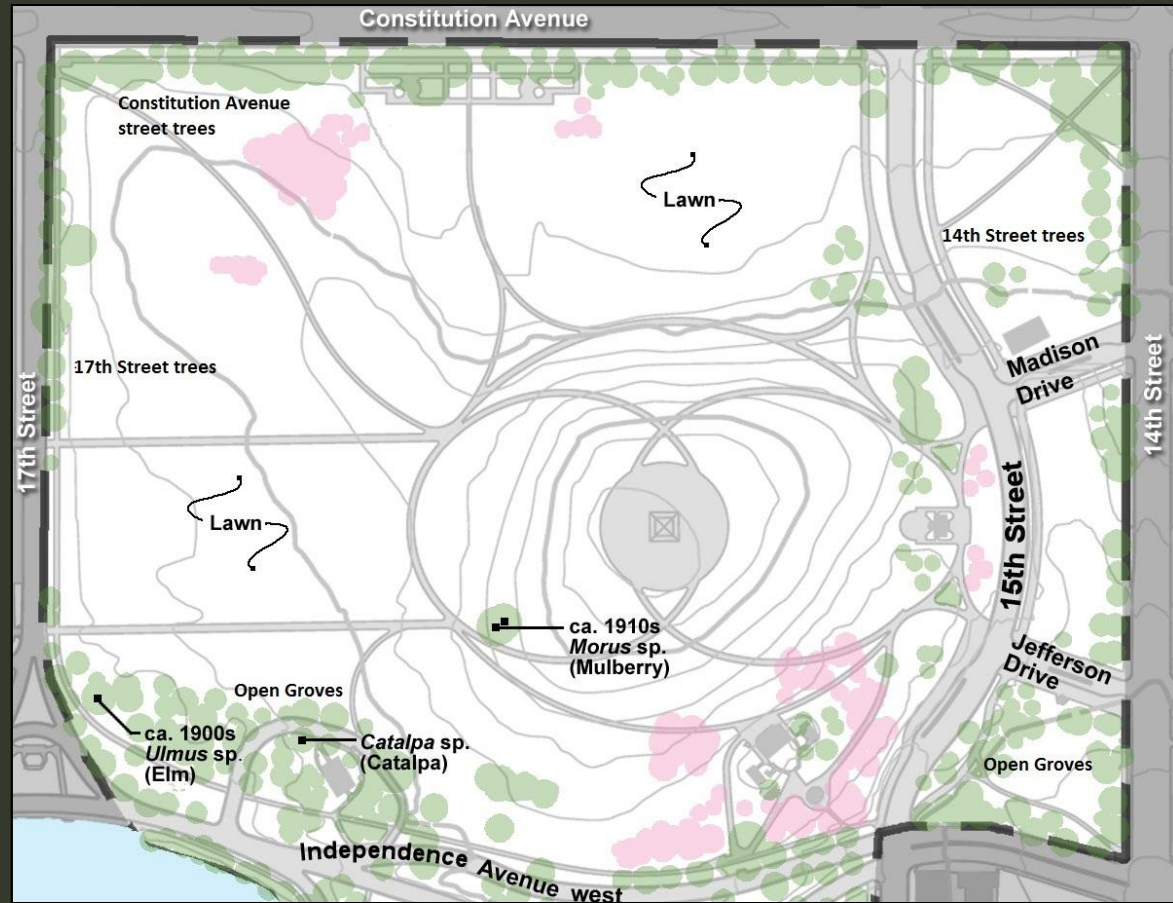


Contributing Landscape Features

Washington Monument Grounds CLI

Vegetation

- Lawn
- Mulberry Tree
- Street trees along 14th & 17th streets & Constitution Avenue
- Elm Tree near Survey Lodge
- Catalpa Tree behind Survey Lodge
- Open Groves



Contributing Landscape Features



Washington Monument Grounds CLI

Small-Scale Features

- Elevation Obelisk
- Twin Twenty double-lamp street lights
- Washington Globe single-lamp street lights
- Cast-iron and wood-slat benches
- Ring of flagpoles
- Stone-lined drainage ditch at Survey Lodge service drive
- Pipe handrail at Tidal Basin

Contributing Landscape Features

Washington Monument Grounds CLI

Topography

- Mound
- Flats
- Berms

Land Use

- Commemoration
- Public Gathering
- Recreation
- Visitor Service

Spatial Organization

- Determined by relationship of site to other significant structures
- Functions as axis of Monumental Core



Contributing Landscape Features



Washington Monument Grounds CLI

Views and Vistas

- From DC and the surrounding region

From Arlington House



Contributing Landscape Features

Washington Monument Grounds CLI

Views and Vistas

- From the top of the Monument



Toward the Jefferson Memorial

Contributing Landscape Features



Washington Monument Grounds CLI

Views and Vistas

- From the site to memorials, the White House, and the Capitol

From the plaza toward the Lincoln Memorial

Contributing Landscape Features

Washington Monument Grounds CLI

Views and Vistas

- From the memorials, the White House, and the Capitol to the site



From the Jefferson Memorial

Contributing Landscape Features



Washington Monument Grounds CLI

Views and Vistas

- Axial views from the White House to the Jefferson Memorial

From the Ellipse

Contributing Landscape Features

Washington Monument Grounds CLI

Views and Vistas

- Screened views of site features



From 15th Street