

DEMO LEGEND

- LIMITS OF DEMOLITION
- DEMO LANDSCAPING, SEED/SOD AFTER BULD. WORK COMPLETE
- DEMO WALL
- XXXXXX - DEMO UTILITIES
- DEMO 6" CANOPY POST

HATCHING LEGEND

- EX. COBBLE STONE
- EX. SLATE PAVERS
- EX. GRANITE EDGE

SEE ARCHITECTURAL DEMOLITION SHEETS FOR DEMOLITION NOTES AND DETAILS (TYP.)

SEE NOTE 2

BRICK WALL W/ CONC. CAP

SEE NOTE 3

SEE NOTE 3

SEE NOTE 9

REMOVE IRRIGATION HEAD AND SALVAGE FOR RELOCATION

SLATE PAVERS ARE TO BE CAREFULLY REMOVED DURING CONSTRUCTION AND REPLACED (SEE NOTE 10)

SEE ARCHITECTURAL DEMOLITION SHEETS FOR DEMOLITION NOTES AND DETAILS (TYP.)

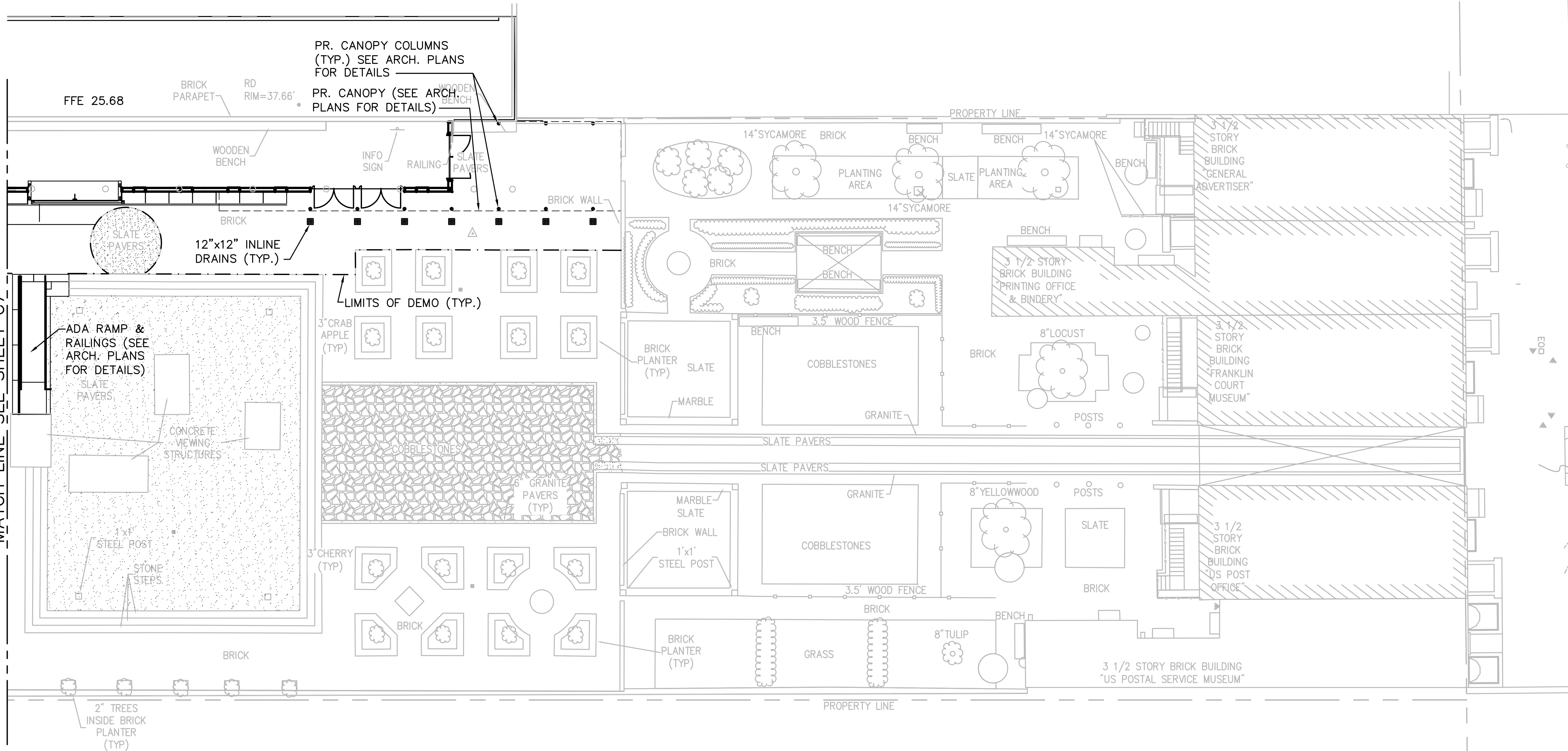
NOTES

- CONTRACTOR SHALL KEEP THE DRAINAGE & SANITARY SYSTEMS OPERATIONAL THROUGHOUT THE PROJECT. PROPOSED DRAINAGE & SANITARY SYSTEMS ARE TO BE INSTALLED BEFORE EXISTING SYSTEM IS DEMOLISHED.
- CONTRACTOR SHALL REMOVE AND DISPOSE OF LEGALLY THE POSTS AND ASSOCIATED FOOTING FOR THE EXISTING CANOPY (SEE ARCHITECTURAL DEMOLITION PLANS).
- EXISTING STORM PIPE AND FIRE HYDRANT ARE TO REMAIN IN SERVICE DURING PROJECT.
- EXISTING GROUND MOUNTED LIGHTS IN THE COURTYARD ARE TO BE REMOVED (SEE ELECTRICAL PLANS FOR ASSOCIATED ELECTRICAL DEMOLITION)
- STONE AND BRICK PAVERS ARE TO BE CAREFULLY REMOVED AND SALVAGED FOR LATER REPLACEMENT.
- THE FLUSH GRANITE CURB IS TO REMAIN IN PLACE. CONTRACTOR SHALL PROTECT CURB AS REQUIRED, OR REPLACE ANY SECTIONS DAMAGED DURING CONSTRUCTION.
- CONTRACTOR SHALL ENSURE THAT NO AREA IS LEFT UNSTABILIZED AT THE END OF THE WORKDAY UNLESS THAT AREA DRAINS TO AN APPROVED SEDIMENT CONTROL DEVICE.
- THE GROUND BENEATH AND ADJACENT TO THE EXISTING BUILDING IS AN ARCHEOLOGICALLY SENSITIVE AREA. ALL EXCAVATION WORK IS SUBJECT TO ARCHEOLOGICAL MONITORING. SEE DIVISION 01-SECTION 013513.22 ARCHEOLOGICAL PROTECTION.
- FOR TREE ROOTS ENCOUNTERED DURING DEMOLITION AND CONSTRUCTION WORK, THE CONTRACTOR SHALL IMPLEMENT THE FOLLOWING EXCAVATION PROCESS: USE AN AIR TOOL FIRST TO EXCAVATE THROUGH AREA AT ROOT SYSTEM LOCATION. AIR-TOOLS TO REMOVE SOIL FROM AROUND TREE ROOTS TO MINIMIZE DAMAGE. AFTER EXPOSING ROOTS, THE ROOTS ARE EXPOSED; THEY SHOULD BE CUT WITH SHARP, STERILIZED PRUNING EQUIPMENT. FOR DURATION OF EXCAVATION, LARGER ROOTS (>1" DIAMETER) SHALL BE COVERED WITH WET BURLAP AND PLASTIC AND SECURED (TIED OR RUBBER Banded) TO THE ROOTS ENDS. UPON COMPLETION OF BELOW GRADE WORK, REMOVE THE BURLAP/PLASTIC AND BACKFILL THE TRENCH.
- CONTRACTOR SHALL DOCUMENT THE EXISTING SLATE PAVERS BEFORE REMOVAL AND REPLACE THE PAVERS IN EXACT LOCATION.



A/E FIRM PRIME: QUINN EVANS ARCHITECTS SUB: VHB, INC. WILLIAMSBURG, VA	DESIGNED: TJH	SUB SHEET NO C5	TITLE OF SHEET DEMOLITION PLAN FRANKLIN COURT MUSEUM INDEPENDENCE NATIONAL HISTORICAL PARK	DRAWING NO. 391 100042
	WVD			PMIS/PKG NO. INDE-8384
	TECH. REVIEW: TJH			SHEET
	DATE: 03/15/2011			14 OF 219

MATCH LINE SEE SHEET C7



MARKET STREET

HATCHING LEGEND

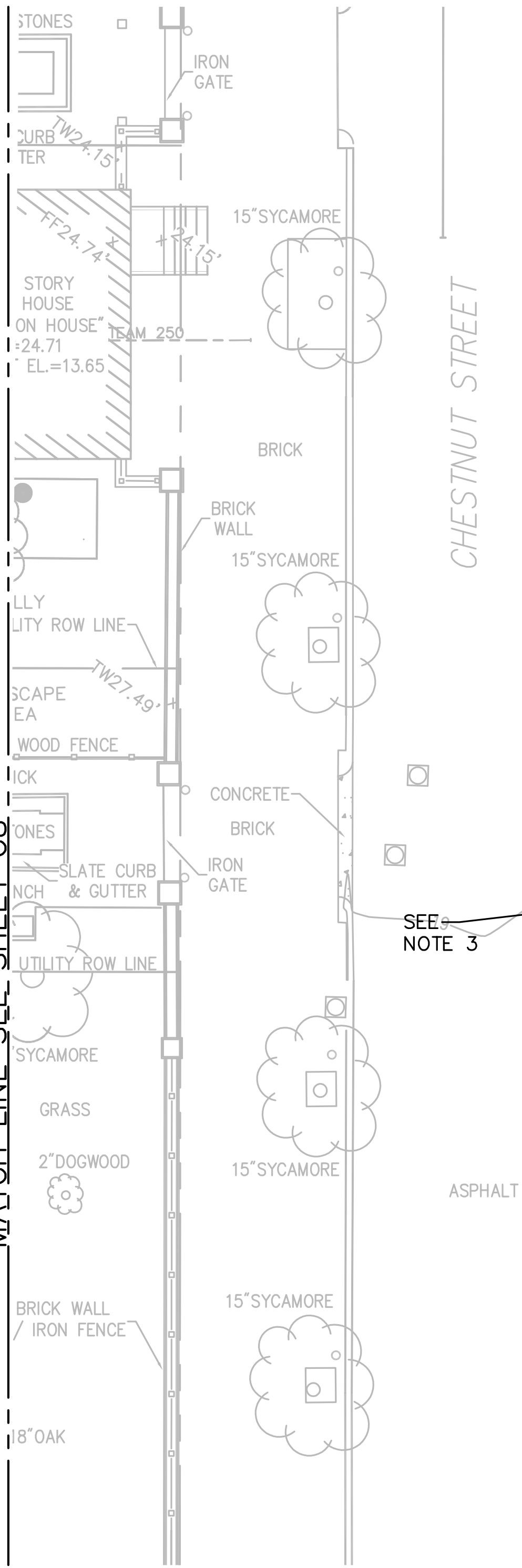
- EX. COBBLE STONE
- EX. SLATE PAVERS
- EX. GRANITE EDGE

NOTES

- BRICK AND SLATE PAVERS ARE TO MATCH THE EXISTING BRICK AND SLATE PAVERS WITHIN THE LIMITS OF DEMO (SEE ARCHITECTURAL PLANS FOR REPLACEMENTS OF SLATE AND BRICK PAVERS AND OTHER ASSOCIATED HARDSCAPING)
- SEE ARCHITECTURAL PLANS FOR THE LAYOUT OF THE PROPOSED BUILDING IMPROVEMENTS



A/E FIRM PRIME: QUINN EVANS ARCHITECTS SUB: VHB, INC. WILLIAMSBURG, VA	DESIGNED: TJH VND TECH. REVIEW: TJH DATE: 03/15/2011	SUB SHEET NO C6	TITLE OF SHEET LAYOUT & MATERIALS PLAN FRANKLIN COURT MUSEUM INDEPENDENCE NATIONAL HISTORICAL PARK	DRAWING NO. 391 100042 PMIS/PKG NO. INDE-8384 SHEET 15 OF 219
---	--	---------------------------	---	---

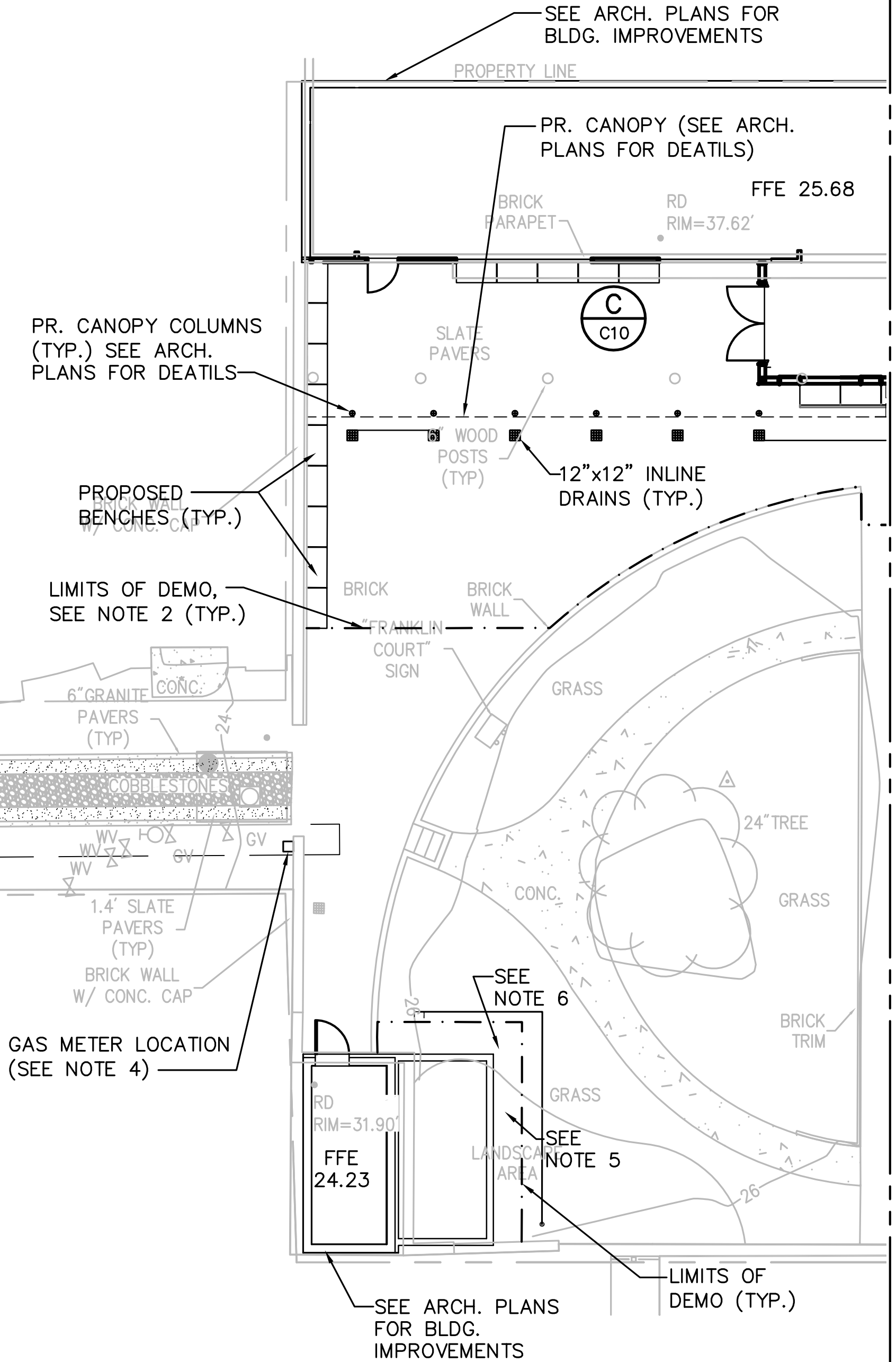


HATCHING LEGEND

	EX. COBBLE STONE
	EX. SLATE PAVERS
	EX. GRANITE EDGE

- THE FLUSH GRANITE CURB IS TO REMAIN IN PLACE. CONTRACTOR SHALL PROTECT CURB AS REQUIRED, OR REPLACE ANY SECTIONS DAMAGED DURING CONSTRUCTION.
- BRICK AND SLATE PAVERS ARE TO MATCH THE EXISTING BRICK AND SLATE PAVERS WITHIN THE LIMITS OF DEMO (SEE ARCHITECTURAL PLANS FOR REPLACEMENTS OF SLATE AND BRICK PAVERS AND OTHER ASSOCIATED HARDSCAPING)
- CONTRACTOR SHALL PROVIDE MAINTENANCE OF TRAFFIC IN THE CHESTNUT STREET / ORIANNA STREET INTERSECTION AS REQUIRED AND SHALL COORDINATE ALL WORK IN THE RIGHT-OF-WAY WITH THE CITY OF PHILADELPHIA.
- PHILADELPHIA GAS COMPANY IS TO PROVIDE FINAL GASLINE DESIGN INCLUDING LAYOUT, DEPTH AND METER LOCATION.
- CONTRACTOR SHALL SPREAD 4" TOPSOIL AND SEED THE DISTURBED LANDSCAPE AREA.
- FOR TREE ROOTS ENCOUNTERED DURING DEMOLITION AND CONSTRUCTION WORK, THE CONTRACTOR SHALL IMPLEMENT THE FOLLOWING EXCAVATION PROCESS: USE AN AIR TOOL FIRST TO EXCAVATE THROUGH AREA AT ROOT SYSTEM LOCATION. AIR-TOOLS TO REMOVE SOIL FROM AROUND TREE ROOTS TO MINIMIZE DAMAGE. AFTER EXPOSING ROOTS, THE ROOTS ARE EXPOSED; THEY SHOULD BE CUT WITH SHARP, STERILIZED PRUNING EQUIPMENT. FOR DURATION OF EXCAVATION, LARGER ROOTS (>1" DIAMETER) SHALL BE COVERED WITH WET BURLAP AND PLASTIC AND SECURED (TIED OR RUBBER BANDED) TO THE ROOTS ENDS. UPON COMPLETION OF BELOW GRADE WORK, REMOVE THE BURLAP/PLASTIC AND BACKFILL THE TRENCH.

NOTES



A/E FIRM PRIME: QUINN EVANS ARCHITECTS SUB: VHB, INC. WILLIAMSBURG, VA	DESIGNED: TJH VND TECH. REVIEW: TJH DATE: 03/15/2011	SUB SHEET NO C7	TITLE OF SHEET LAYOUT & MATERIALS PLAN FRANKLIN COURT MUSEUM INDEPENDENCE NATIONAL HISTORICAL PARK	DRAWING NO. 391 100042 PMIS/PKG NO. INDE-8384 SHEET 16 OF 219
--	--	---------------------------	---	---