


Broad Branch Daylighting Project



Steve Saari

Steve.saari@dc.gov

202-535-2961

District Department
of the Environment

Why DDOE is interested in this project

- ❑ Improve water quality by exposing piped water to sunlight and biological processes
- ❑ Reduce nutrient & sediment loads by slowing flow of stormwater & increasing infiltration
- ❑ Improve wildlife habitat

Scope of Project

- ▣ 1,600-2,000 feet in length
- ▣ 171 acre drainage area

Phase 1

Current phase – determine feasibility & prepare as built drawings (2008) Cost \$200K

Phase 2

Build project (2009) Cost \$500K

Broad Branch Rd NW & Linnean Ave NW, Washington, DC

Jocelyn Street Northwest

Nebraska Avenue Northwest

Linnean Terrace Northwest

36th Street Northwest

34th Street Northwest

33rd Street Northwest

Fessenden Street Northwest

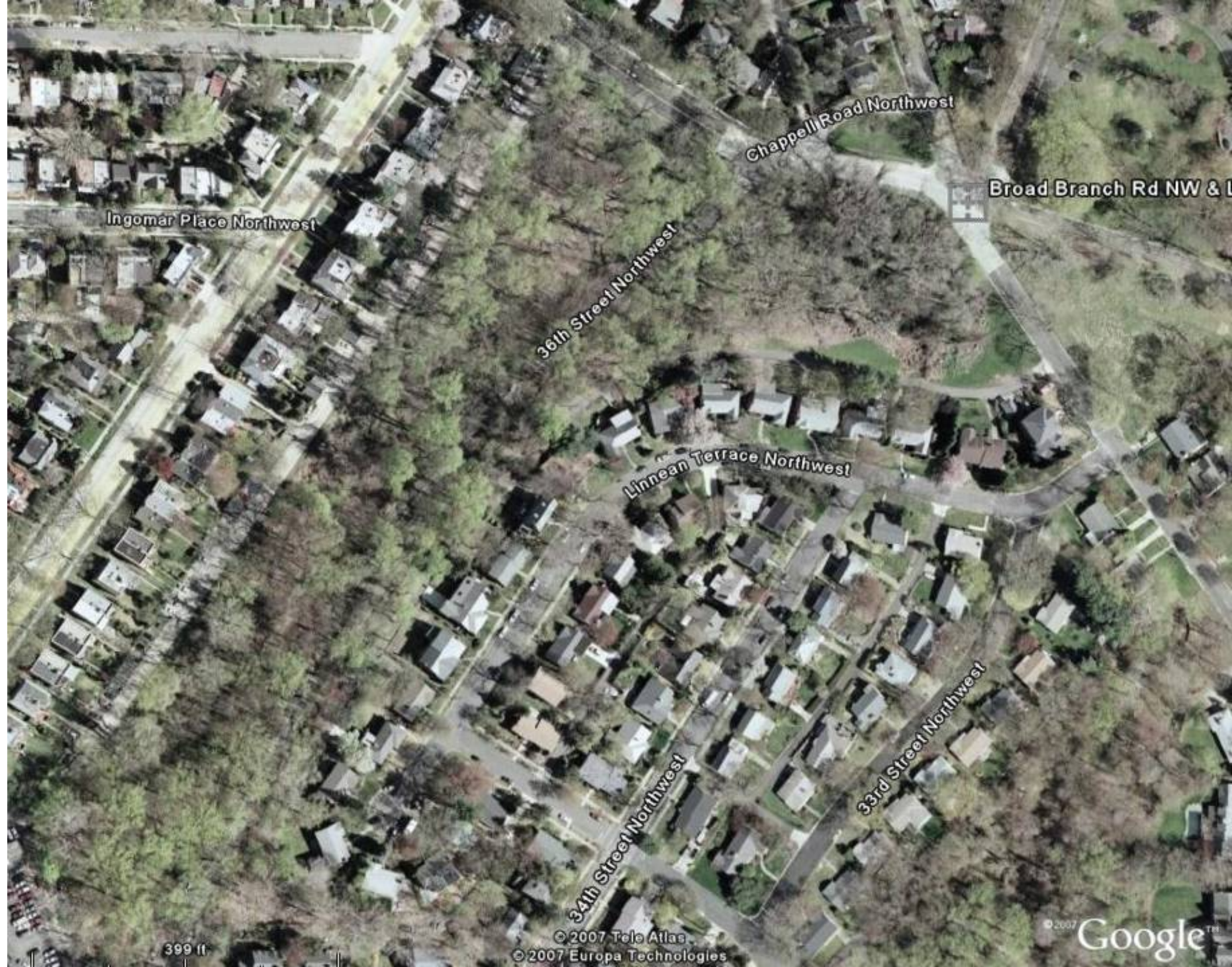
30th Place Northwest

Linnean Avenue Northwest

30th Street Northwest

Ellicott Terrace Northwest

27th Street Northwest



Ingomar Place Northwest

Chappell Road Northwest

Broad Branch Rd NW & L

36th Street Northwest

Linnean Terrace Northwest

34th Street Northwest

33rd Street Northwest

399 ft

© 2007 Tele Atlas
© 2007 Europa Technologies

© 2007 Google™















Chappell Road Northwest

Broad Branch Rd NW & Linnean Ave NW, Washington, DC

© 2007 Tele Atlas
© 2007 Europa Technologies

© 2007 Google

157 ft







Broad Branch Rd NW & Linnean Ave NW, Washington, DC

Harrison Street Northwest

413 ft

© 2007 Tele Atlas
© 2007 Europa Technologies

© 2007 Google™





















Benefits of Daylighting Broad Branch

- ❑ Convert stormwater to ground water
- ❑ Dissipate erosive energy of stormwater
- ❑ Create habitat
- ❑ Treat stormwater pollution
- ❑ Create a community amenity