

Grand Canyon National Park

Special Flight Rules Area in the Vicinity of Grand Canyon National Park

National Park Service
U.S. Department of the Interior



Legend

- Points of Interest
- ✈ Airport/Airstrip

Grand Canyon National Park

Air Tour Route

- Fixed-wing, Black Route
- Fixed-wing, Blue Route
- Helicopter
- Support

General Aviation Corridor (GAC)

General aviation allowed above 10,499 ft MSL

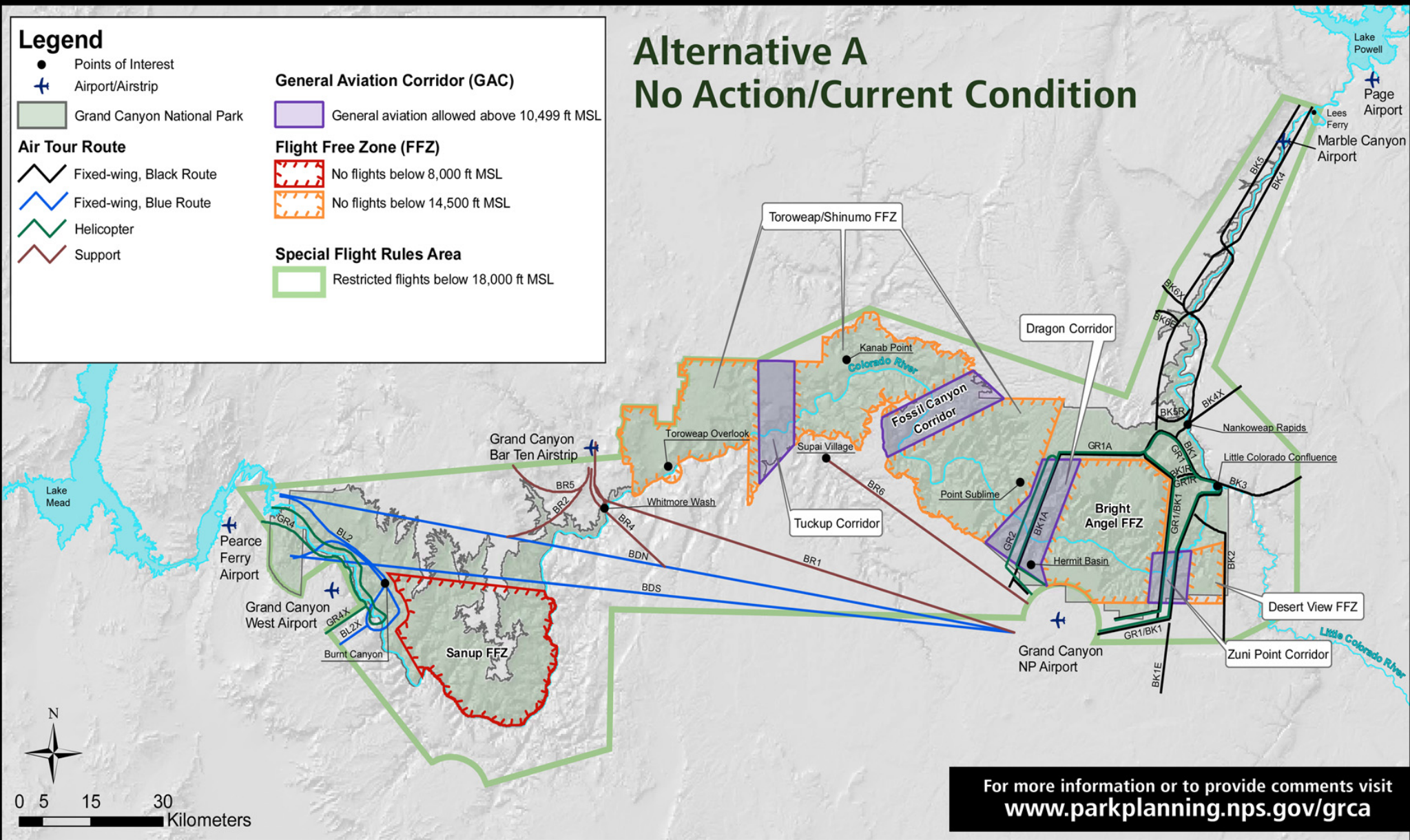
Flight Free Zone (FFZ)

- No flights below 8,000 ft MSL
- No flights below 14,500 ft MSL

Special Flight Rules Area

Restricted flights below 18,000 ft MSL

Alternative A No Action/Current Condition



For more information or to provide comments visit
www.parkplanning.nps.gov/grca

Grand Canyon National Park

Special Flight Rules Area in the Vicinity of Grand Canyon National Park

National Park Service
U.S. Department of the Interior

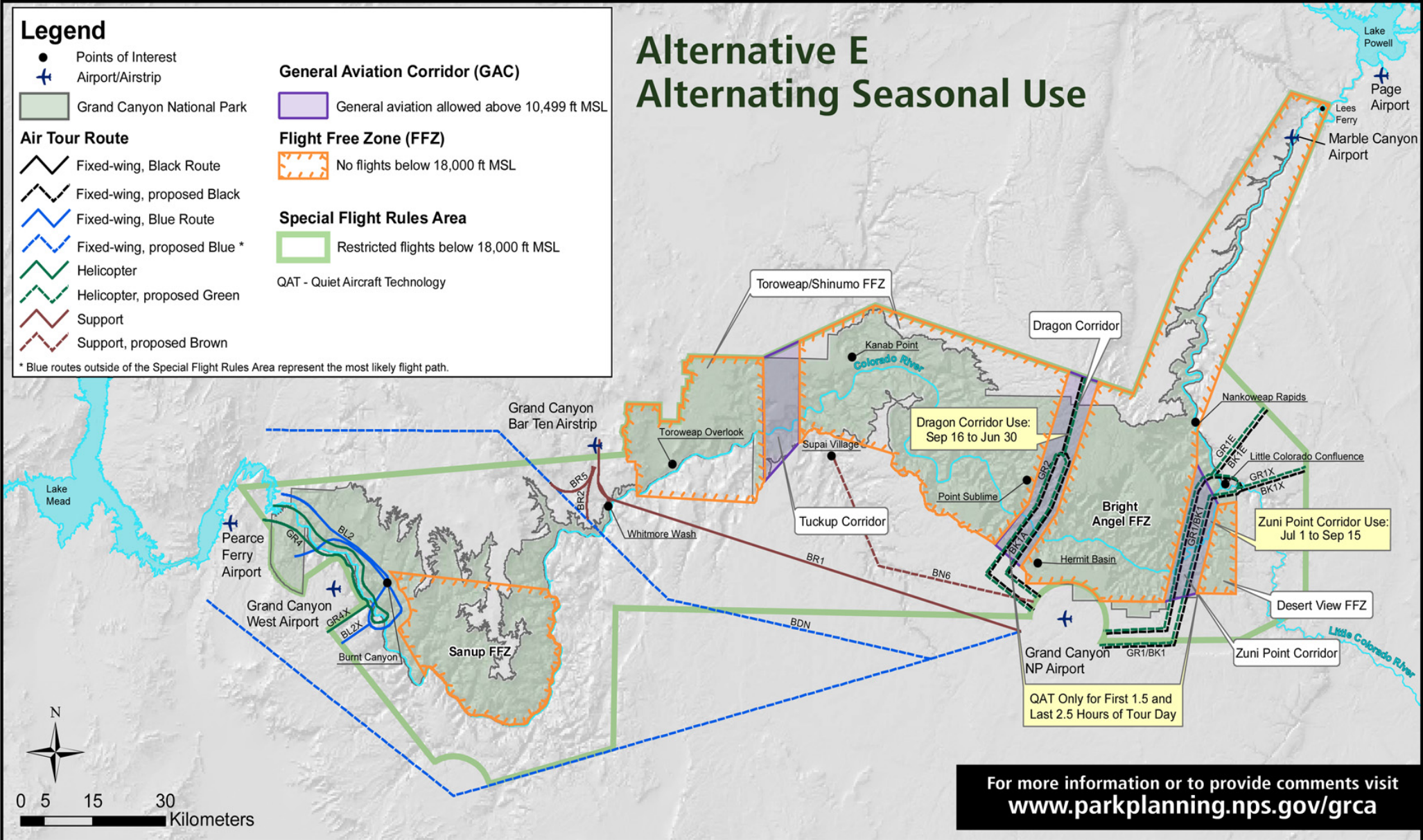


Legend

- Points of Interest
- ✈ Airport/Airstrip
- Grand Canyon National Park
- Air Tour Route**
 - Fixed-wing, Black Route
 - Fixed-wing, proposed Black
 - Fixed-wing, Blue Route
 - Fixed-wing, proposed Blue *
 - Helicopter
 - Helicopter, proposed Green
 - Support
 - Support, proposed Brown
- General Aviation Corridor (GAC)**
 - General aviation allowed above 10,499 ft MSL
- Flight Free Zone (FFZ)**
 - No flights below 18,000 ft MSL
- Special Flight Rules Area**
 - Restricted flights below 18,000 ft MSL
 - QAT - Quiet Aircraft Technology

* Blue routes outside of the Special Flight Rules Area represent the most likely flight path.

Alternative E Alternating Seasonal Use



For more information or to provide comments visit
www.parkplanning.nps.gov/grca

Grand Canyon National Park

Special Flight Rules Area in the Vicinity of Grand Canyon National Park

National Park Service
U.S. Department of the Interior



Legend

- Points of Interest
- ✈ Airport/Airstrip

Grand Canyon National Park

Air Tour Route

- Fixed-wing, Black Route
- Fixed-wing, proposed Black
- Fixed-wing, Blue Route
- Fixed-wing, proposed Blue
- Helicopter
- Helicopter, proposed Green
- Support
- Support, proposed Brown

General Aviation Corridor (GAC)

General aviation allowed above 10,499 ft MSL

Flight Free Zone (FFZ)

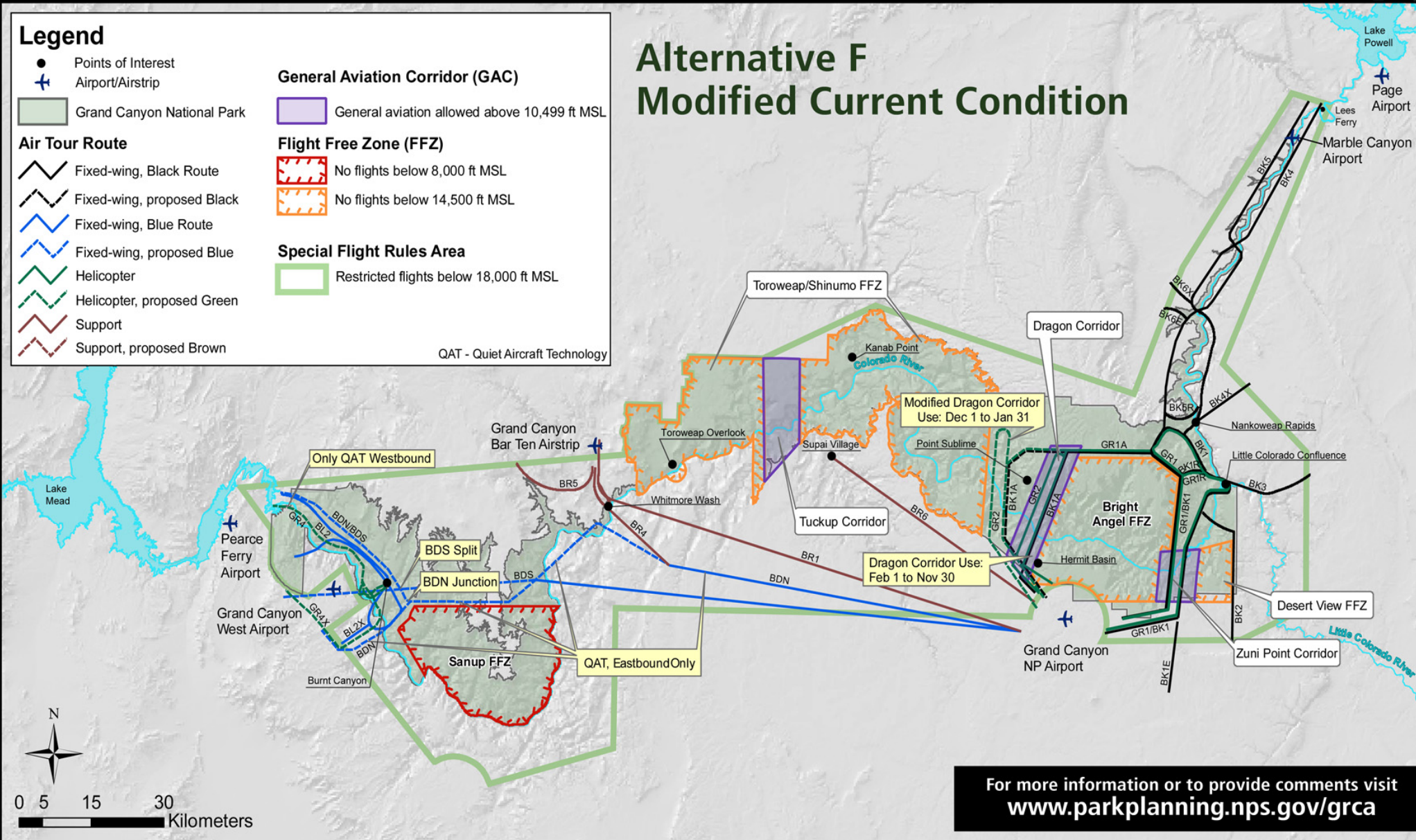
- No flights below 8,000 ft MSL
- No flights below 14,500 ft MSL

Special Flight Rules Area

Restricted flights below 18,000 ft MSL

QAT - Quiet Aircraft Technology

Alternative F Modified Current Condition



For more information or to provide comments visit
www.parkplanning.nps.gov/grca

Grand Canyon National Park

Special Flight Rules Area in the Vicinity of Grand Canyon National Park

National Park Service
U.S. Department of the Interior



Legend

- Points of Interest
- + Airport/Airstrip

Grand Canyon National Park

Air Tour Route

- Fixed-wing, Black Route
- Fixed-wing, proposed Black
- Fixed-wing, Blue Route
- Fixed-wing, proposed Blue
- Helicopter
- Helicopter, proposed Green
- Support
- Support, proposed Brown

General Aviation Corridor (GAC)

General aviation allowed above 10,499 ft MSL

Flight Free Zone (FFZ)

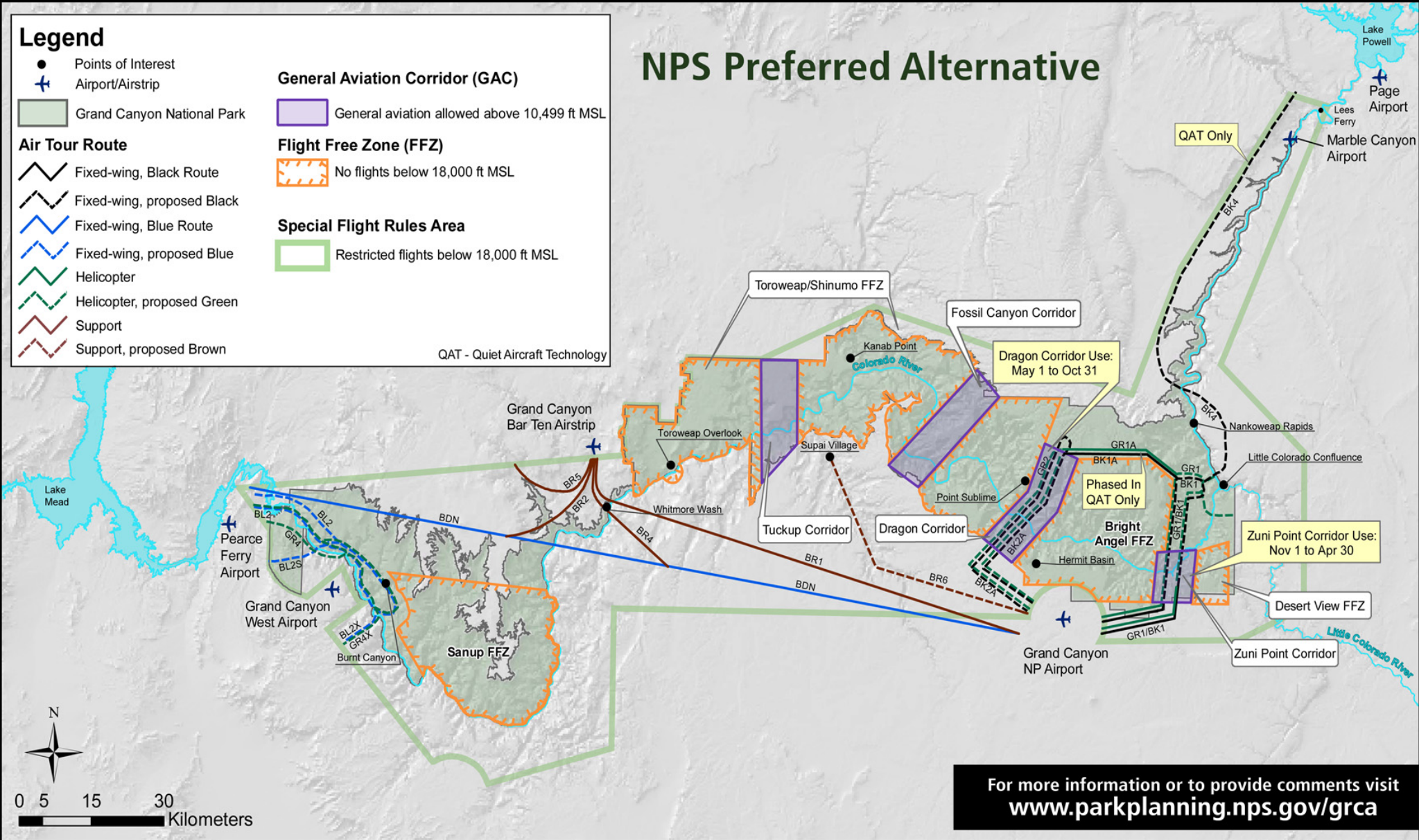
No flights below 18,000 ft MSL

Special Flight Rules Area

Restricted flights below 18,000 ft MSL

QAT - Quiet Aircraft Technology

NPS Preferred Alternative



For more information or to provide comments visit
www.parkplanning.nps.gov/grca