



SECTION 106 CONSULTING PARTIES MEETING #1

# Washington Monument Visitor Security Screening

MARCH 24, 2011

# Agenda

- 1:00 – 1:10 Welcome and Introductions
- 1:10 – 1:20 Project Background
- 1:20 – 1:30 Goals for Section 106 Meeting #1
- 1:30 – 2:15 Presentation of Monument History and Concept Design Themes and Discussion
- 2:15 – 2:45 Cultural Resources: Presentation of Draft APEs and Identification of Historic Resources and Discussion
- 2:45 – 3:00 Next Steps and Schedule



# Welcome and Introductions





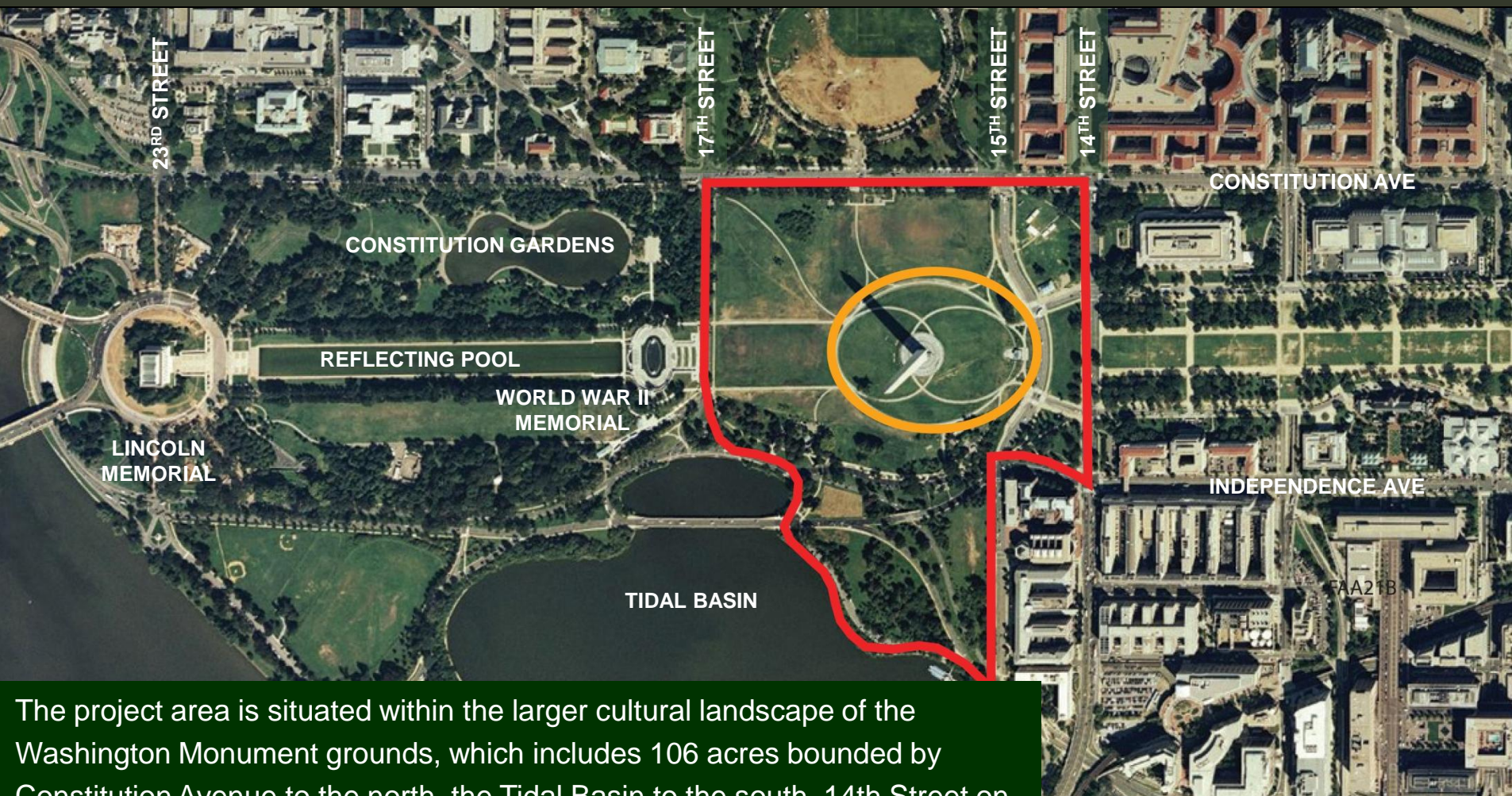
# Project Background

The purpose of the proposed actions is to improve the security of the Monument in a manner that maintains and preserves the visitor experience and cultural landscape of the Monument grounds.

As the primary memorial to the nation's first president, the Monument is one of the most prominent icons in the nation and is toured by approximately one million visitors annually with many more visiting the surrounding grounds. Its popularity, combined with its status as an icon, makes it a potential target for terrorist attack. A permanent perimeter vehicular barrier system was completed with landscape improvements in 2006. The visitor screening facility that was also constructed at that time was temporary. Action is needed to complete the comprehensive security improvements.



# Project Background



The project area is situated within the larger cultural landscape of the Washington Monument grounds, which includes 106 acres bounded by Constitution Avenue to the north, the Tidal Basin to the south, 14th Street on the east, and 17th Street on the west.



# Project Background

Temporary Visitor Screening Facility








Visitors waiting to enter the Monument

# Project Background



## LEGEND

- |   |  |
|---|--|
|  Temporary visitor screening facility |  Monument Lodge |
|  Granite plaza and flagpole circle    |  Sylvan Theater |
|  Permanent vehicular barrier          |  |



Monument Lodge

# Meeting Goals

## Regulations

**NHPA** National Historic Preservation Act

Section 106 regulations,  
36 CFR Part 800

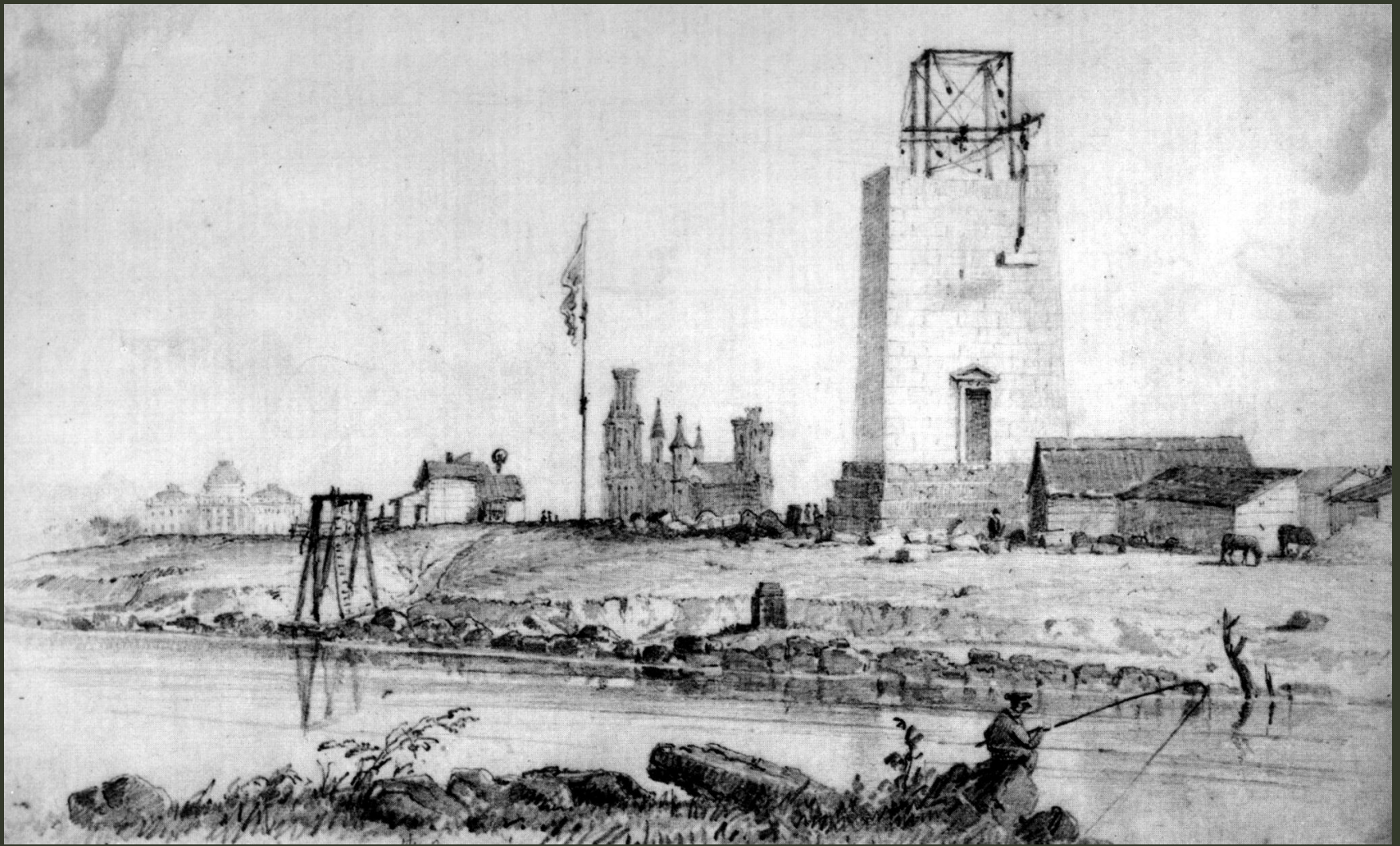
## Process

1. Define Undertaking / Initiate Section 106
2. Identify Consulting Parties
3. Involve the Public
4. Define Area of Potential Effect (APE)
5. Identify Significant Cultural Resources in APE
6. Assess Effects on Significant Resources
7. Apply Criteria Of Adverse Effect
8. Continue Consultation
9. Draft Agreement Document, if needed

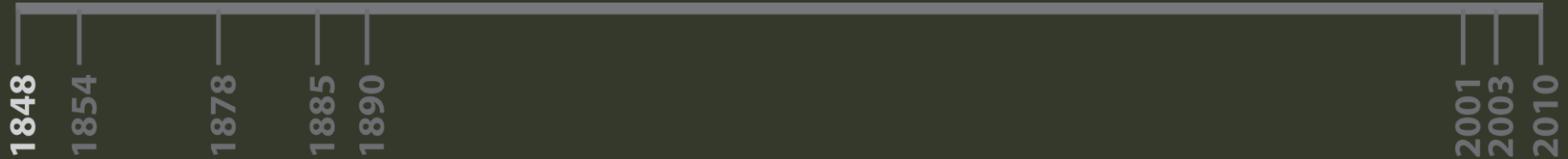


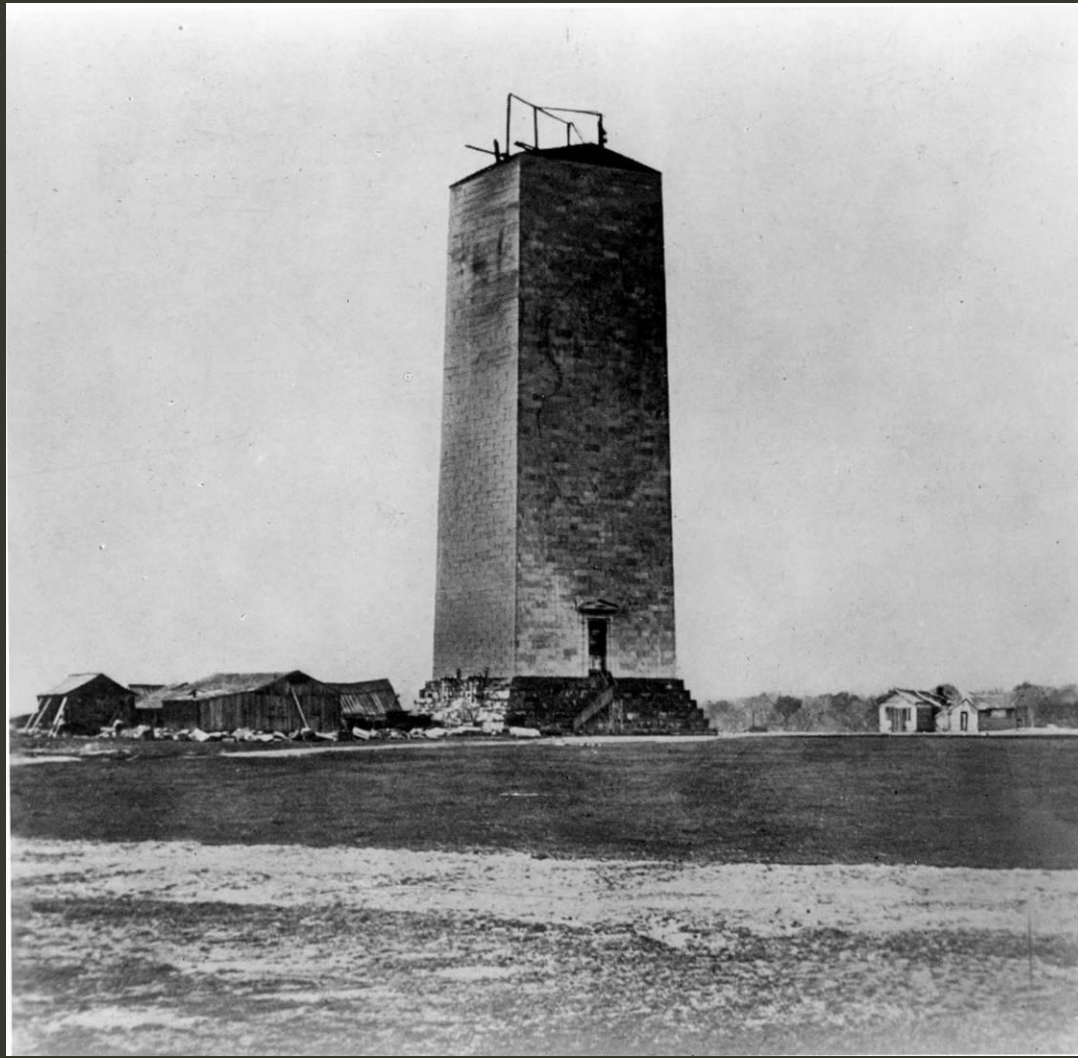


# HISTORY

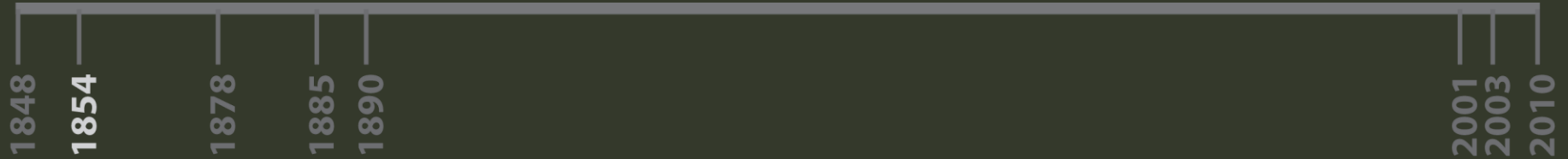


## CONSTRUCTION ON THE FOUNDATION BEGINS

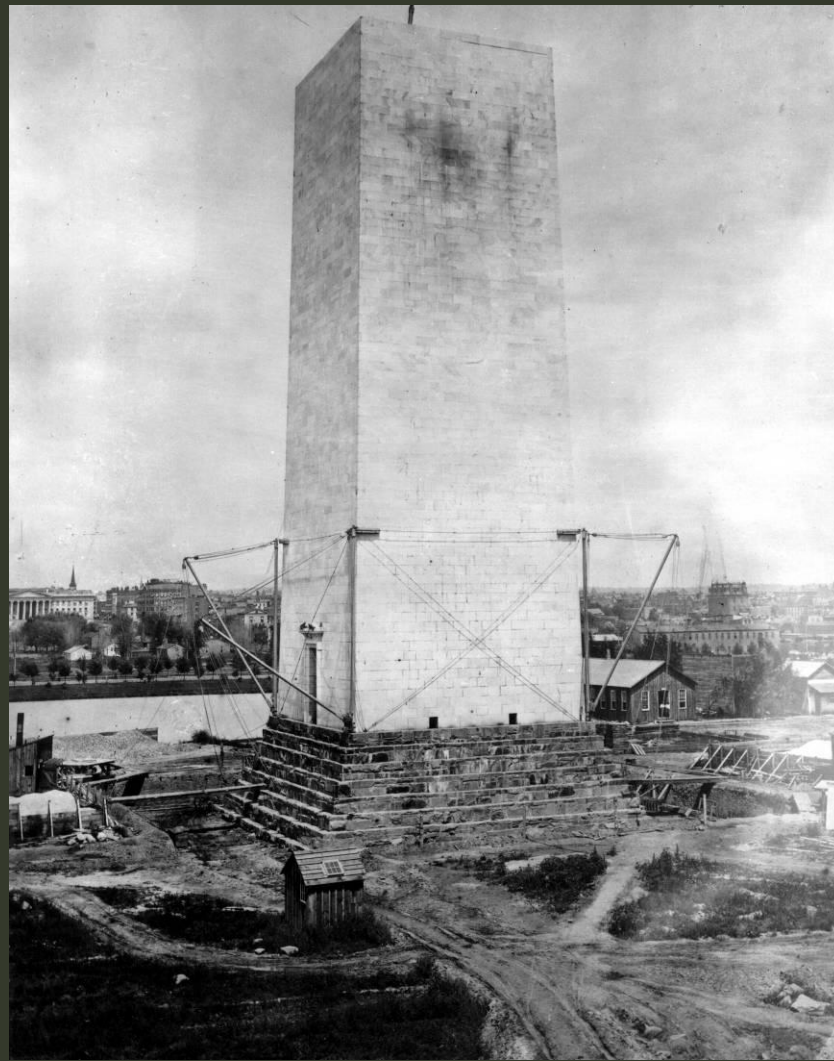




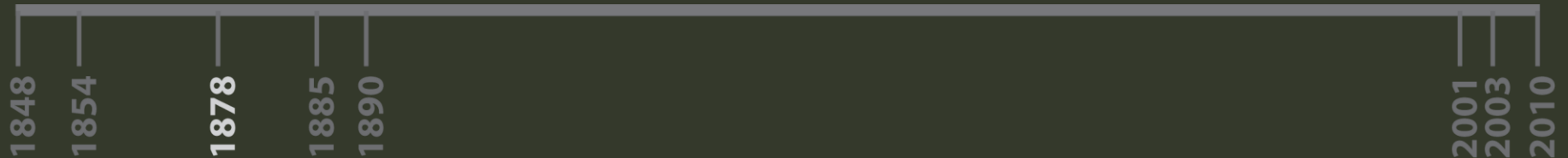
## CONSTRUCTION STOPS





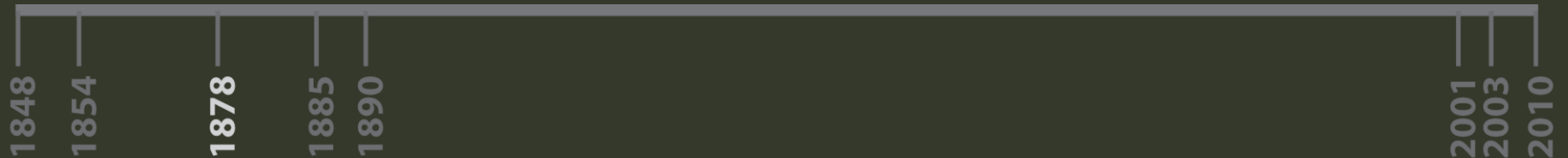


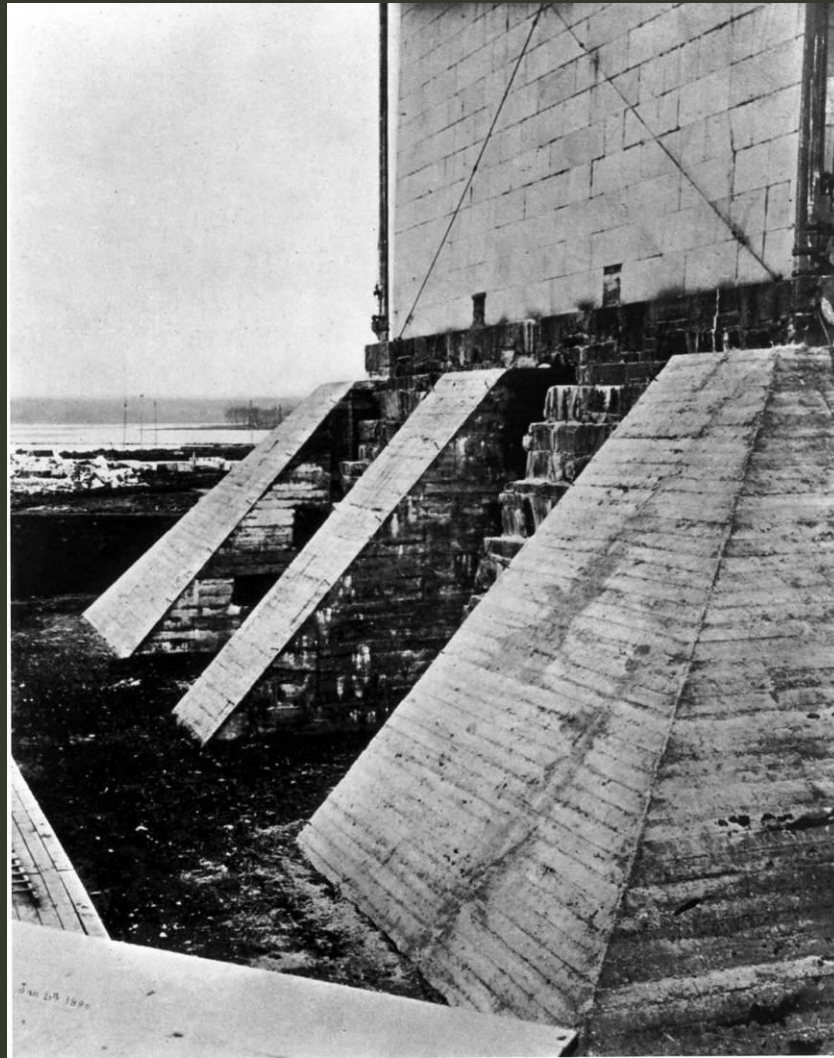
CONSTRUCTION RESUMES BEGINNING WITH REINFORCING THE MONUMENT'S FOUNDATION



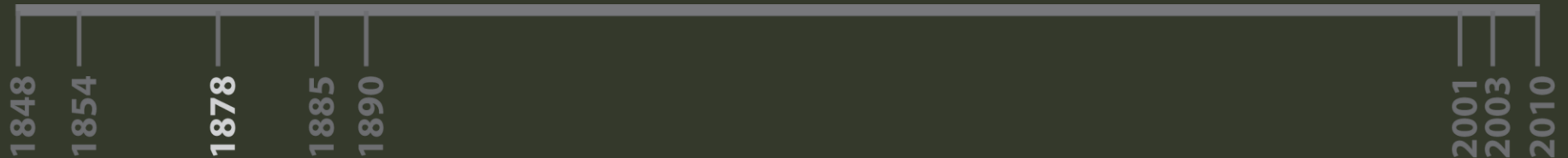


CONSTRUCTION RESUMES BEGINNING WITH REINFORCING THE MONUMENT'S FOUNDATION

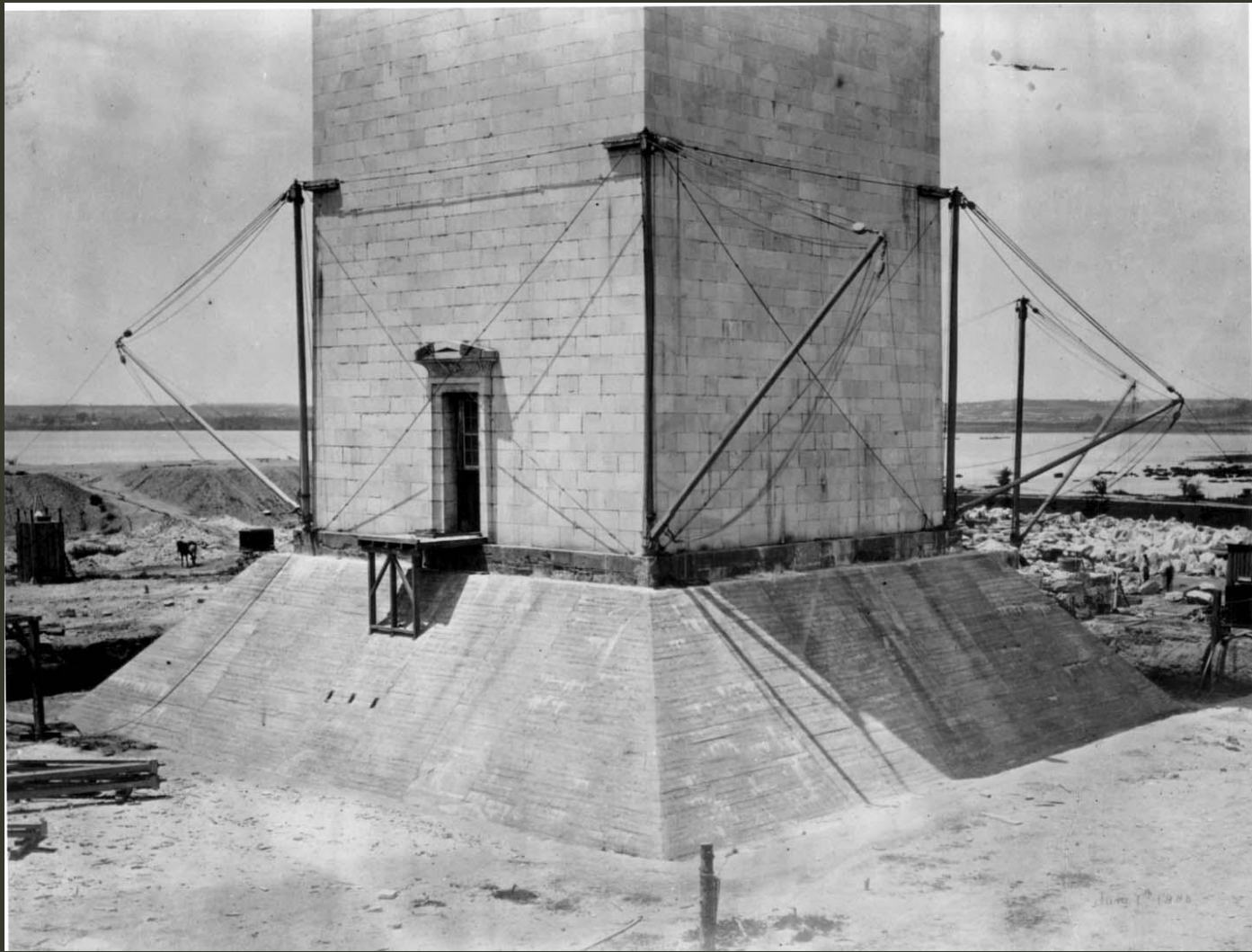




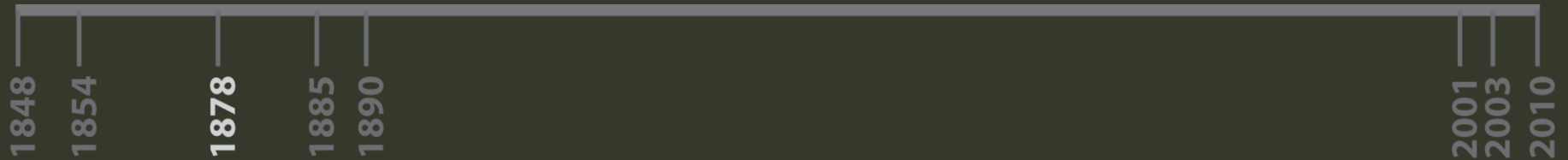
CONSTRUCTION RESUMES BEGINNING WITH REINFORCING THE MONUMENT'S FOUNDATION





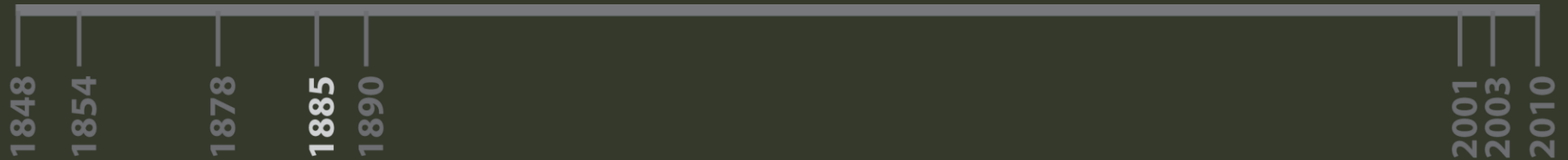


CONSTRUCTION RESUMES BEGINNING WITH REINFORCING THE MONUMENT'S FOUNDATION





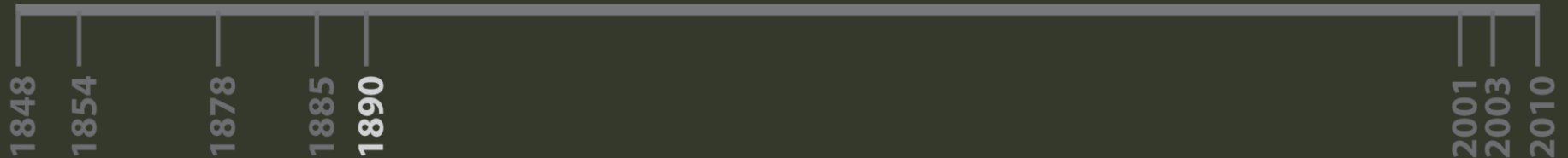
FEBUARY 21, 1885, DEDICATION OF THE WASHINGTON MONUMENT





Postcard of Monument grounds and Monument Lodge, c. 1890 (Postcard published by National Archives, 1978, WHS 8924).

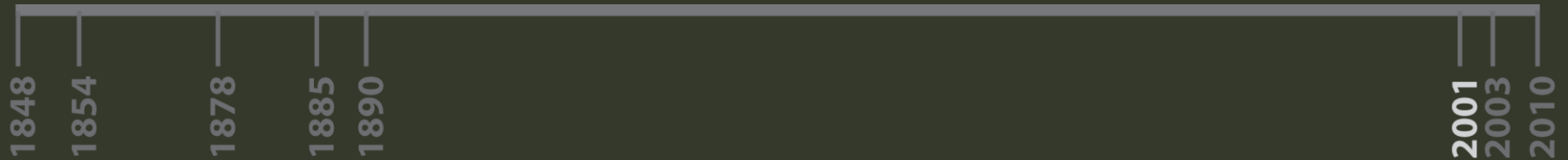
## VIEW OF THE MONUMENT LODGE







TEMPORARY SECURITY SCREENING STRUCTURE ADDED



# Design Themes

1. Existing Conditions (No Action)
2. New Approach Through The Landscape
3. Visitor Screening On The Plaza
4. New Entry Through The Plaza
5. Escorted Visitor Entry
6. Closure Of The Monument



# Existing Conditions (No Action)

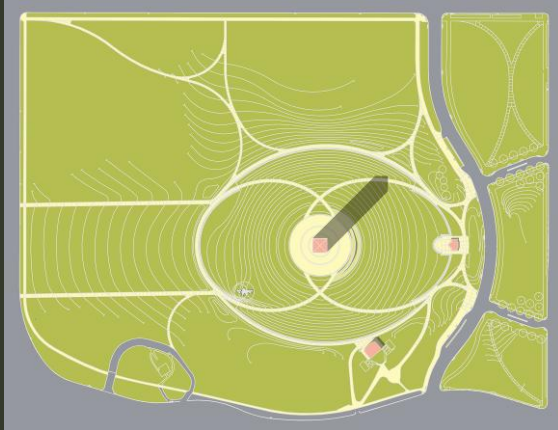
## Option 1





# New Approach Through The Landscape

Option 2



Option 3



# New Approach Through The Landscape (continued)

Option 4

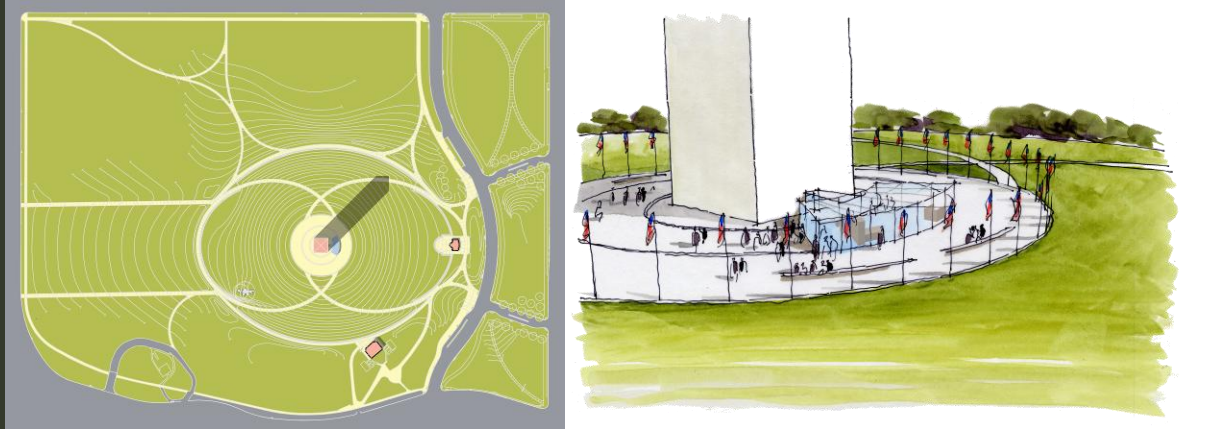


Option 5

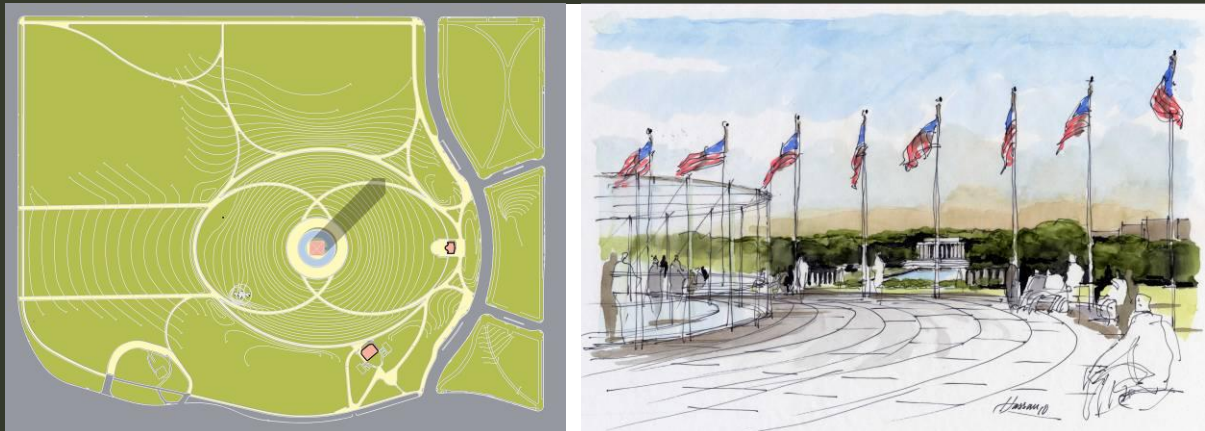


# Visitor Screening Facility On The Plaza

Option 6



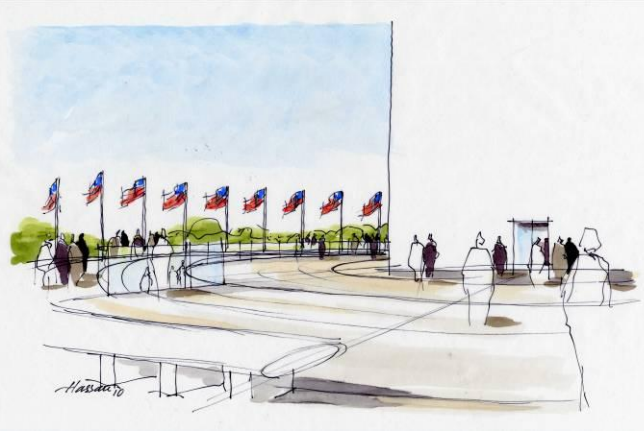
Option 7





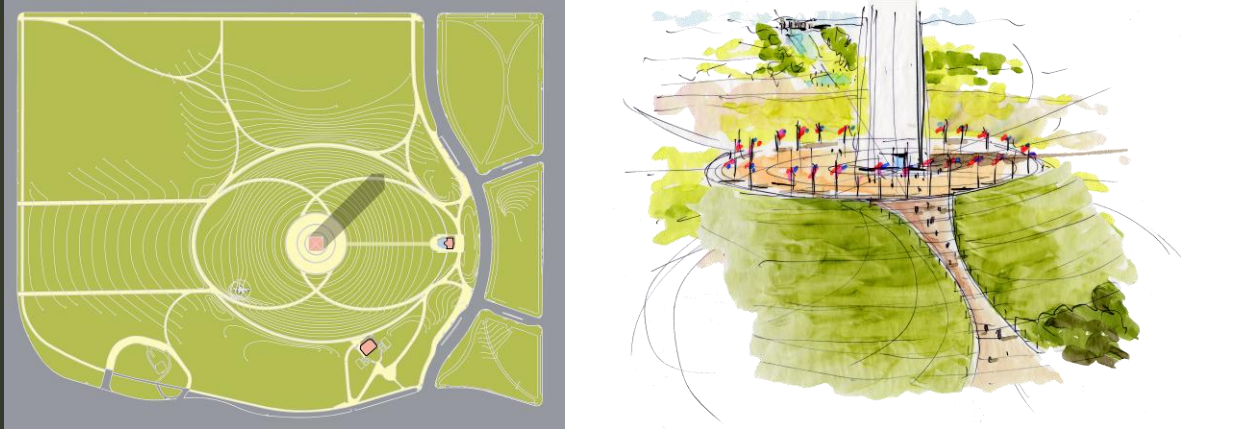
# New Entry Through The Plaza

Option 8



# Escorted Visitor Entry

Option 9



# Closure Of The Monument

Option 10





# Cultural Resources

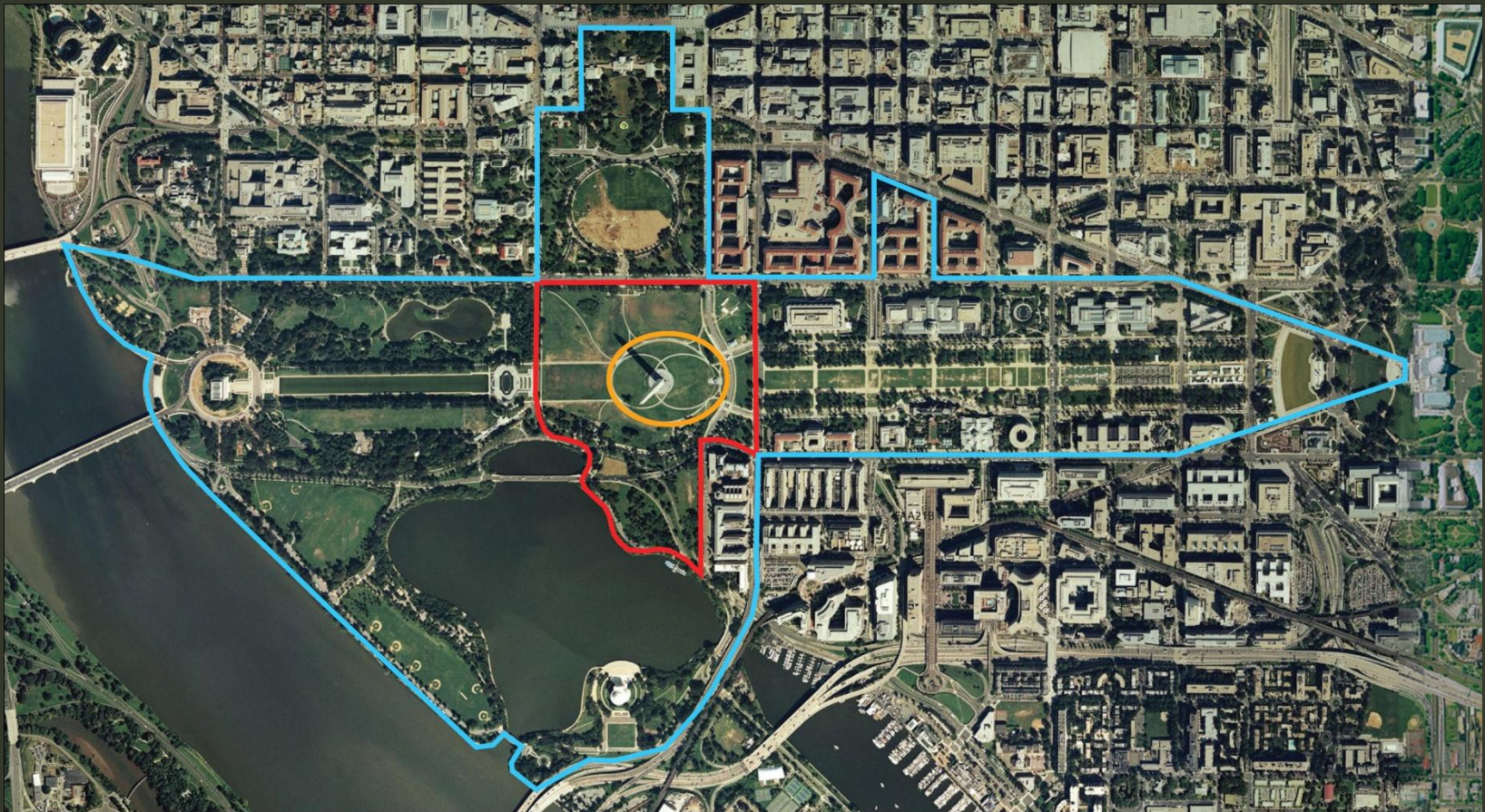
## Draft APEs

### Identification of Historic Resources

- National Register Historic Districts
- Cultural Landscapes
- Individually Listed Historic Properties
- Plan of the City of Washington Contributing Resources
- Washington Monument Grounds Contributing Resources (per 2009 CLI)



# Draft Areas of Potential Effect



## Legend

- Primary APE
- Secondary APE
- Project Area



# Identification of Historic Resources

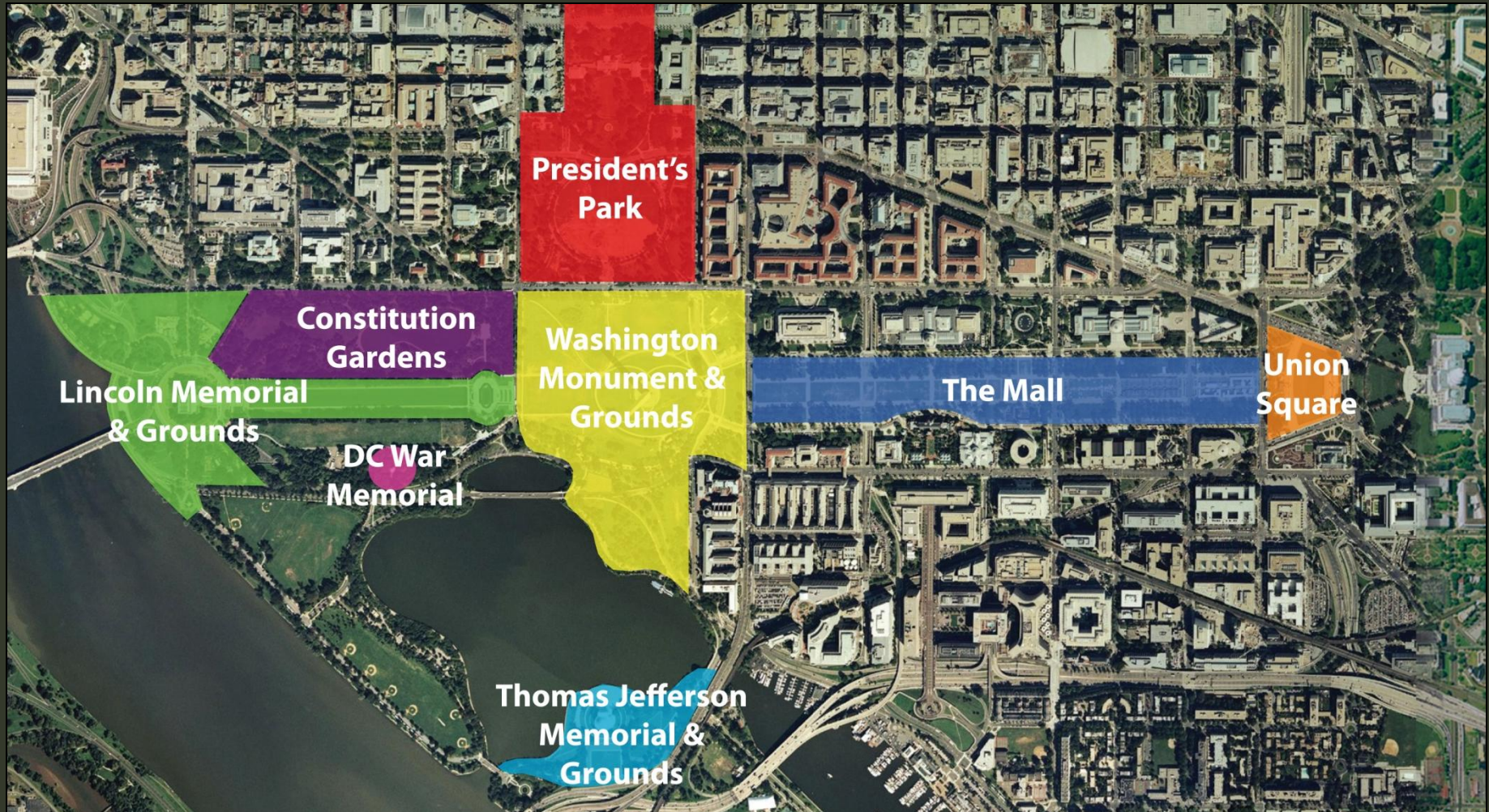
NATIONAL REGISTER HISTORIC DISTRICTS





# Identification of Historic Resources

CULTURAL LANDSCAPES





# Identification of Historic Resources

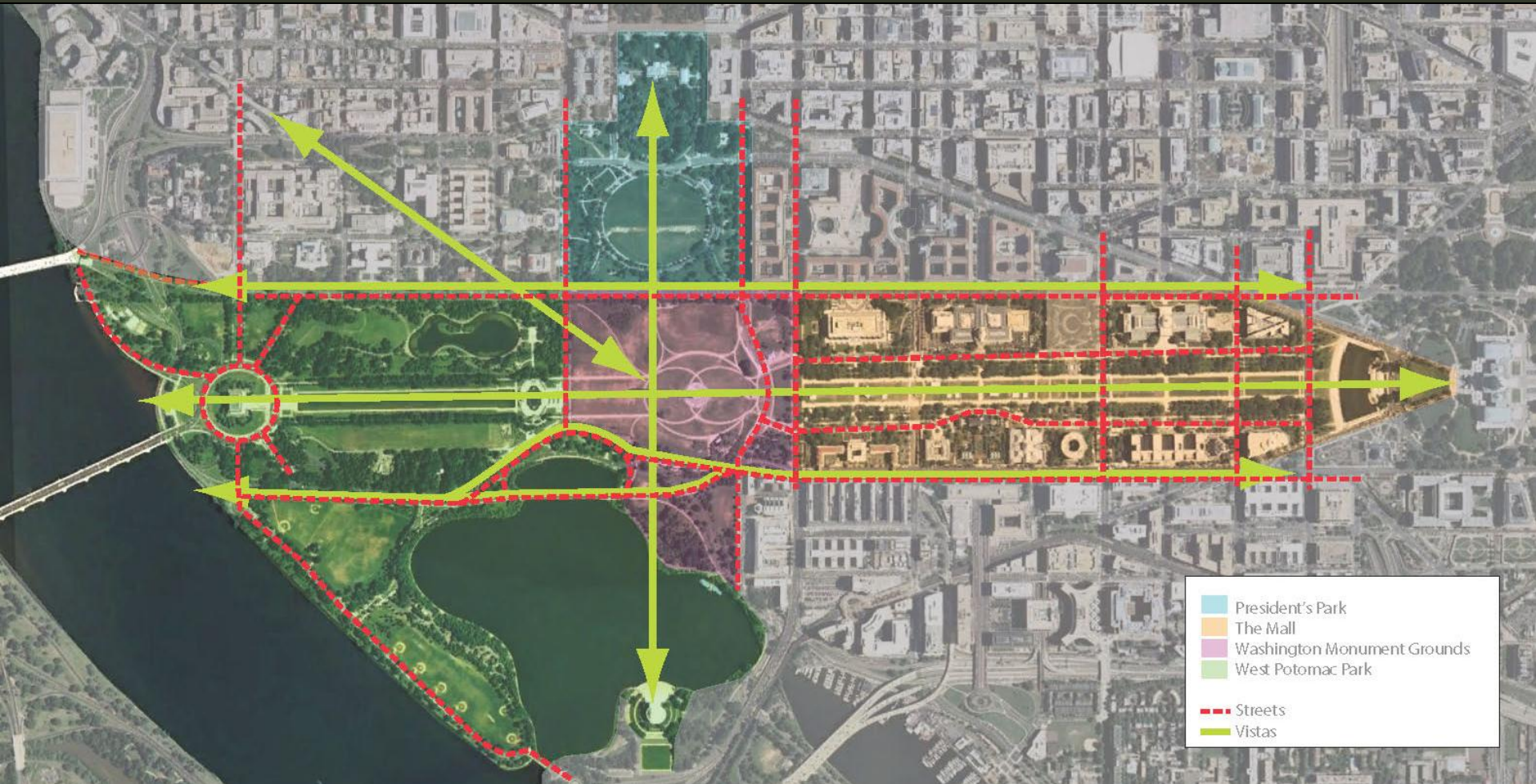
## INDIVIDUALLY LISTED HISTORIC PROPERTIES





# Identification of Historic Resources

PLAN OF THE CITY OF WASHINGTON CONTRIBUTING RESOURCES



- President's Park
- The Mall
- Washington Monument Grounds
- West Potomac Park
- Streets
- Vistas





# Identification of Historic Resources

## WASHINGTON MONUMENT AND GROUNDS CONTRIBUTING RESOURCES

### Buildings and Structures

Washington Monument

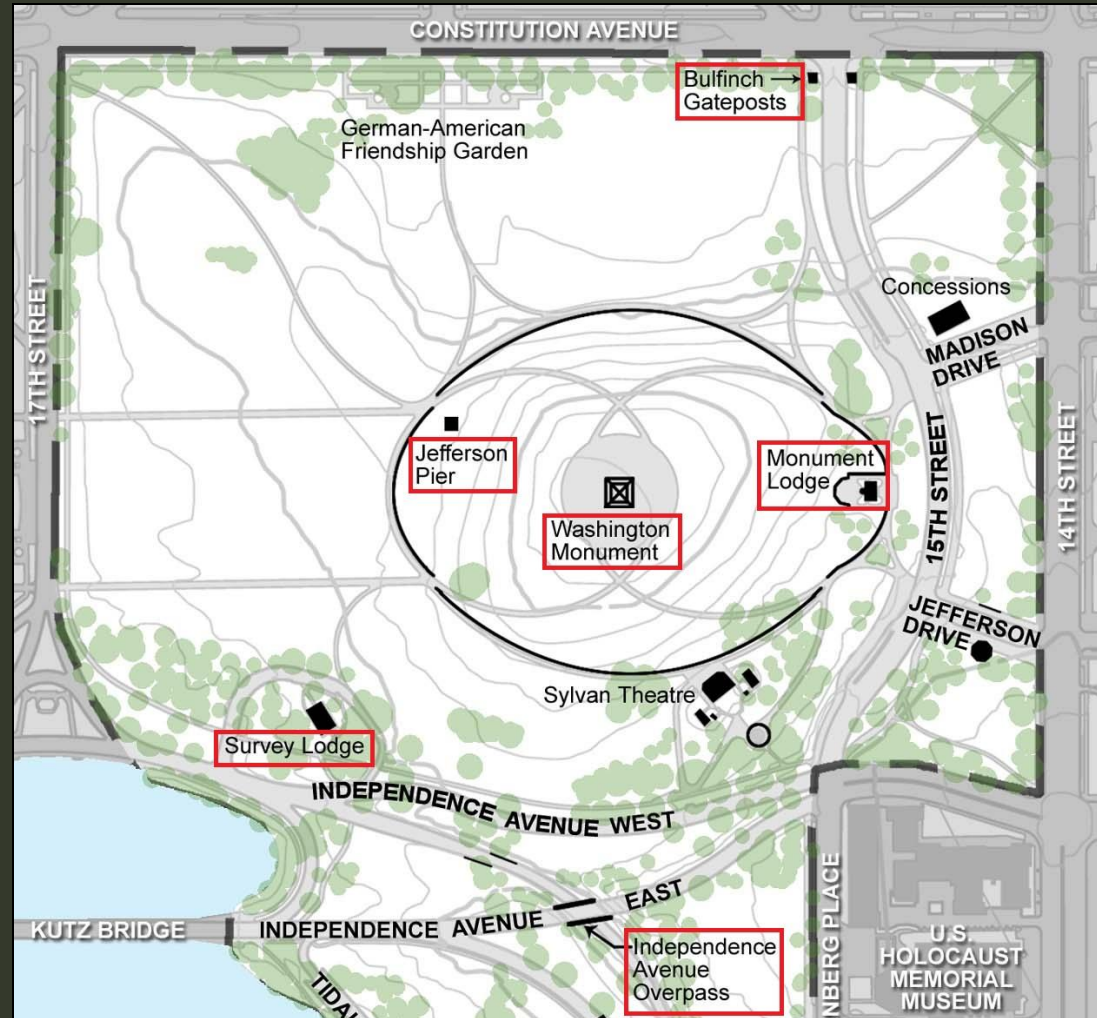
Monument Lodge

Survey Lodge

Jefferson Pier Survey Marker

Bulfinch gateposts

Independence Avenue overpass



# Identification of Historic Resources

## WASHINGTON MONUMENT AND GROUNDS CONTRIBUTING RESOURCES

### Circulation

14<sup>th</sup> Street, 17<sup>th</sup> Street, and  
Constitution Avenue corridors,  
including sidewalks

Independence and Maine Avenue  
corridors

Tidal Basin parking lot corridor

Tidal Basin walk

Raoul Wallenberg Place corridor



# Identification of Historic Resources

## WASHINGTON MONUMENT AND GROUNDS CONTRIBUTING RESOURCES

### Vegetation

Lawn

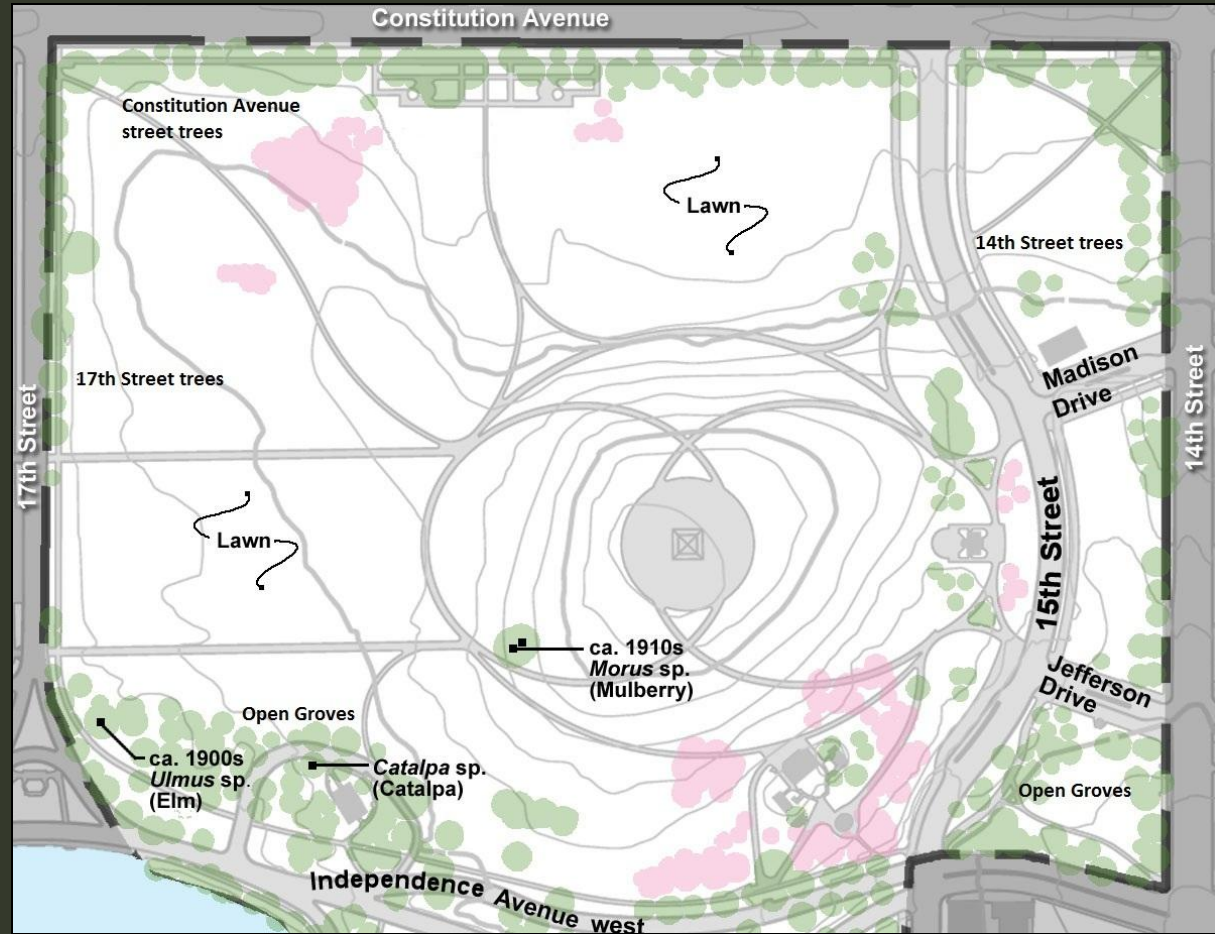
Mulberry Tree

Street trees along 14<sup>th</sup> & 17<sup>th</sup> streets & Constitution Avenue

Elm Tree near Survey Lodge

Catalpa Tree behind Survey Lodge

Open Groves





# Identification of Historic Resources

## WASHINGTON MONUMENT AND GROUNDS CONTRIBUTING RESOURCES



### Small-Scale Features

Elevation Obelisk

Twin Twenty double-lamp street lights

Washington Globe single-lamp street lights

Cast-iron and wood-slat benches

Ring of flagpoles

Stone-lined drainage ditch at Survey Lodge service drive

Pipe handrail at Tidal Basin



# Identification of Historic Resources

## WASHINGTON MONUMENT AND GROUNDS CONTRIBUTING RESOURCES

### Topography

Mound

Flats

Berms

### Land Use

Commemoration

Public Gathering

Recreation

Visitor Service

### Spatial Organization

Determined by relationship of site to other significant structures

Functions as axis of Monumental Core



# Identification of Historic Resources

## WASHINGTON MONUMENT AND GROUNDS CONTRIBUTING RESOURCES



### **Views and Vistas**

From DC and the surrounding region

From Arlington House





# Identification of Historic Resources

## WASHINGTON MONUMENT AND GROUNDS CONTRIBUTING RESOURCES

### Views and Vistas

From the top of the  
Monument



Toward the Jefferson Memorial



# Identification of Historic Resources

## WASHINGTON MONUMENT AND GROUNDS CONTRIBUTING RESOURCES



### Views and Vistas

From the site to memorials, the White House, and the Capitol

From the plaza toward the Lincoln Memorial



# Identification of Historic Resources

## WASHINGTON MONUMENT AND GROUNDS CONTRIBUTING RESOURCES

### Views and Vistas

From the memorials, the White House, and the Capitol to the site



From the Jefferson Memorial





# Identification of Historic Resources

WASHINGTON MONUMENT AND GROUNDS CONTRIBUTING RESOURCES



## Views and Vistas

Axial views from the White House to the Jefferson Memorial

From the Ellipse



# Identification of Historic Resources

## WASHINGTON MONUMENT AND GROUNDS CONTRIBUTING RESOURCES

### Views and Vistas

Screened views of site features



From 15<sup>th</sup> Street



# Next Steps and Schedule



Consulting Parties Meeting #2 – Present  
Assessment of Effects

Consulting Parties Meeting #3 – Discuss  
Draft Agreement Document

Sign Agreement Document



# Thank You for Your Participation

