

## CHAPTER 4: HISTORIC STRUCTURE REPORT

### LONG ISLAND INTRODUCTION

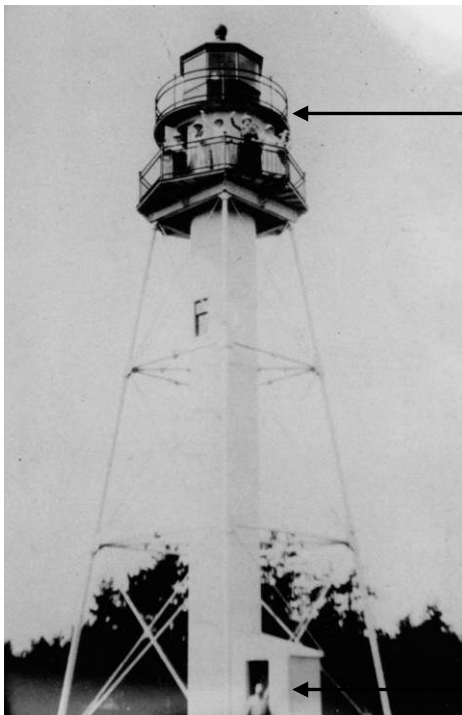
The following sections commence the HSR for Long Island. The disciplines of Architecture, Structural, Mechanical (HVAC and plumbing), Electrical and Environmental Engineering are addressed individually (refer to Volume I, Chapters 1 and 2 for more details on report organization and methodology). Long Island's extant buildings include:

- LaPointe Light Tower
- Chequamegon Point Tower
- Triplex
- Oil Building

Original construction of each building is discussed, followed by its specific history/chronology of alterations (determined by studying historic photos, historic drawings, examining park records and archives and on site investigations and observations by the Study Team).

The Physical Description section describes the current conditions, by discipline and by component, as observed on site during the September 2009 site visit. Each component has been given a condition rating (as outlined in Volume I, Chapter 2: Methodology) in the Condition Assessment section. Treatment Recommendations are based on the Preferred Alternative of the May 2010 Value Analysis/CBA conducted at the park. The Triplex recommendations have been revised to reflect decisions made following the second Value Analysis of December 2010 and are more in keeping with preservation versus rehabilitation.

#### *Historic Photographs*



Platforms, Railings and  
Lantern Painted Black

Shed Entrance

*Historic Image LI-01: LaPointe Metal Tower, c.1900 (Source: NPS APIS Archives)*

1



Platforms, Railings and  
Lantern Painted Black

Non Extant Fog Signal  
Building

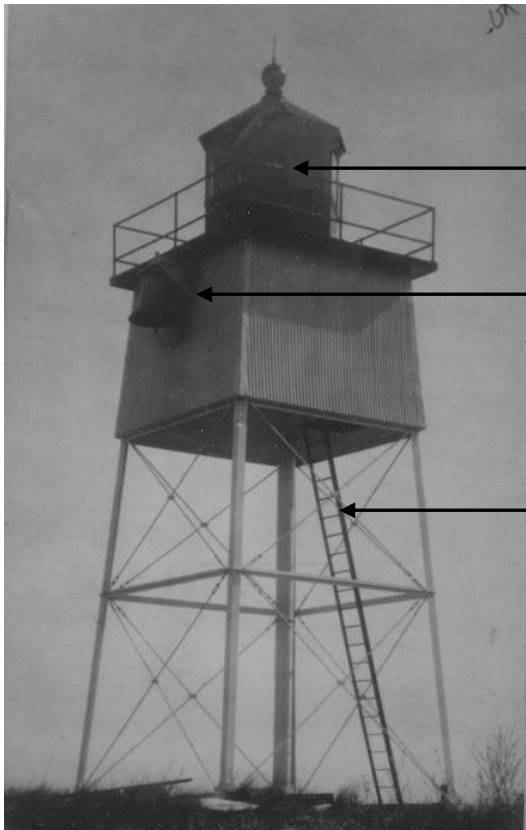
Shed Entrance

2

3

*Historic Image LI-02: LaPointe Tower, c. 1910 (Source: NPS APIS Archives)*

4



Platform, Railing and Lantern  
Painted Black

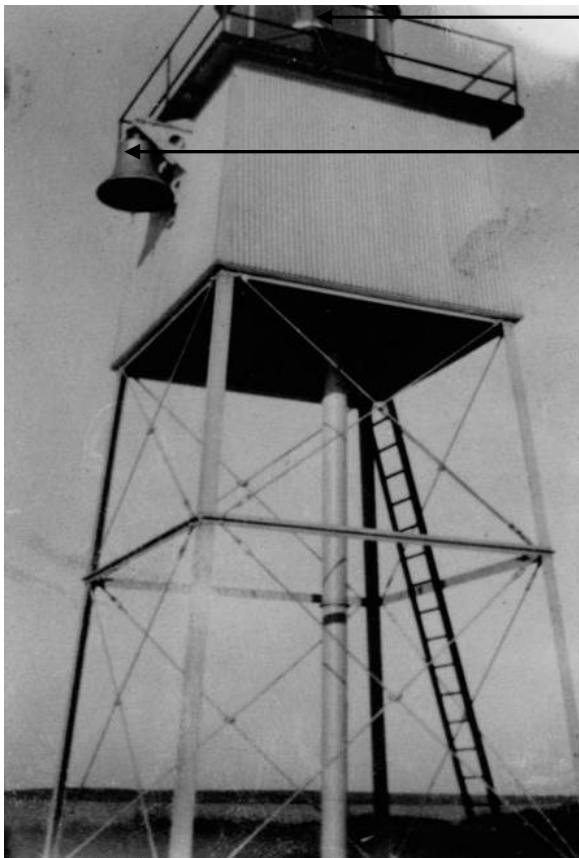
Fog Signal Bell

Ladder to Watch Room

5

1 Historic Image LI-03: Chequamegon Point Tower, c. 1910 (Source: NPS APIS Archives)

2



Platform and Railing Painted Black;  
Railing No Longer Exists

Fog Signal Bell

3

4 Historic Image LI-04: Chequamegon Point Tower, c. 1910 (Source: NPS APIS Archives)

5



6

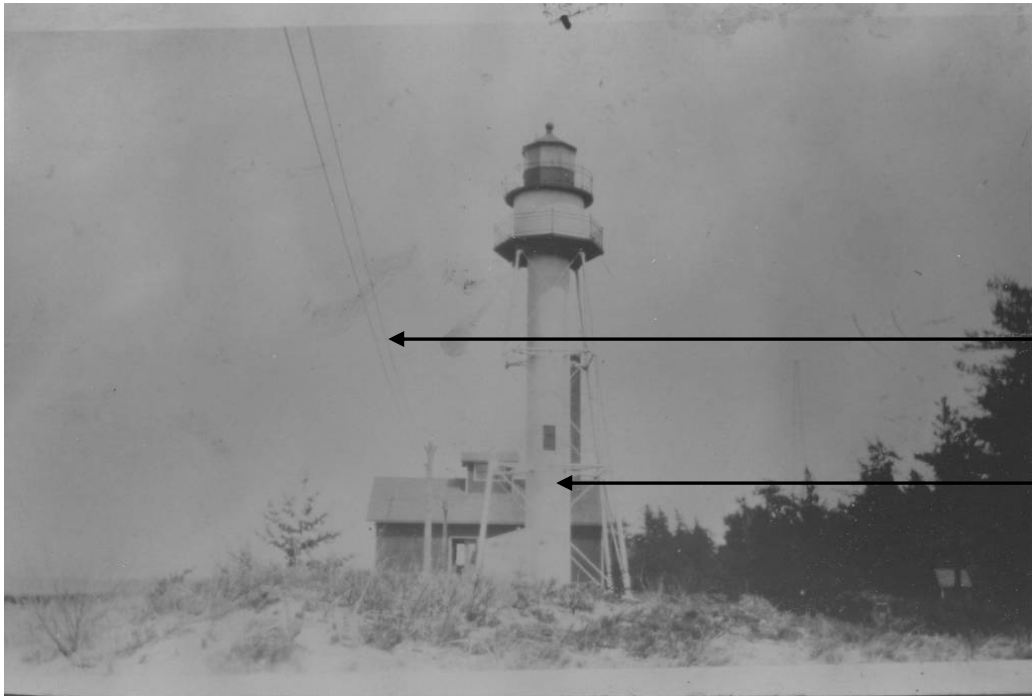
1 *Historic Image LI-05: Fog Signal Building with steam whistle, pre-1925 (Source: NPS APIS Archives)*



3  
4 *Historic Image LI-06: Fog Signal Building, c. 1930 (Source: NPS APIS Archives)*



6  
7 *Historic Image LI-07: Chequamegon Point Tower and cleared land, c. 1930 (Source: NPS APIS Archives)*



Historic Image LI-08: LaPointe Tower and Fog Signal Building, c. 1940 (Source: NPS APIS Archives)



Historic Image LI-09: LaPointe Tower and Fog Signal Building, c. 1940 (Source: NPS APIS Archives)



Door Surrounds

Front Stoops

Historic Image LI-10: Triplex, north elevation, 1942 (Source: NPS APIS Archives)



Siding Removed  
Above Doors to  
Receive New  
Overhangs

Historic Image LI-11: Triplex, south and east elevations, c. 1945 (Source: NPS APIS Archives)



Skeletal Radio Tower Behind  
LaPointe Tower

Historic Image LI-12: Oil Building, c. 1950 -1987 (Source: NPS APIS Archives)



Skeletal Radio  
Tower

NonExtant Fog  
Signal Building

Cleared Land

Dock with  
Wood Railing

Historic Image LI-13: Fog Signal Building, skeletal tower, LaPointe Tower, and Triplex, 1969 (Source: NPS APIS Archives)

1



Dock with Partial  
Metal Railing

2

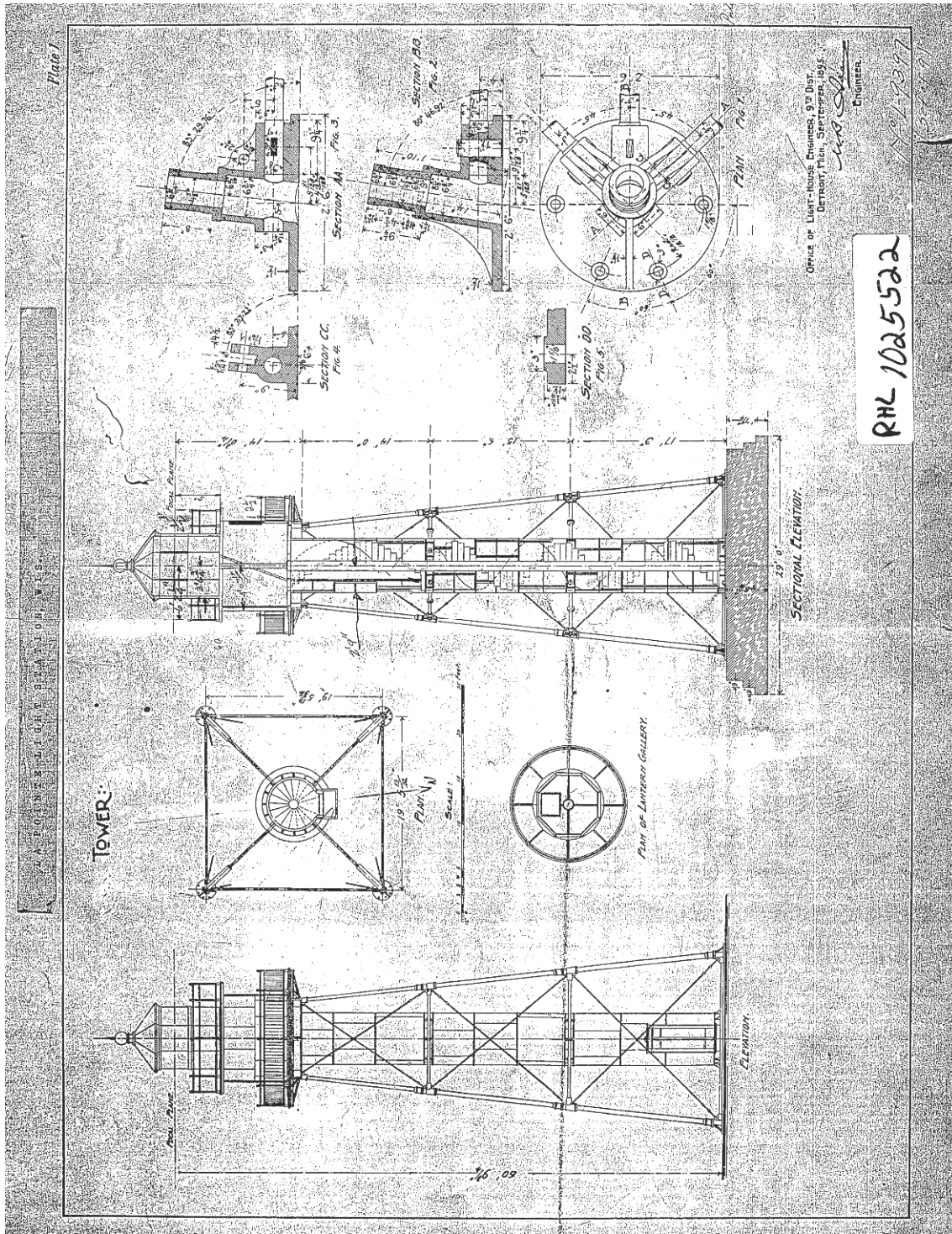
3

*Historic Image LI-14: LaPointe Tower without skeletal radio tower, 1987 (Source: NPS APIS Archives)*

4

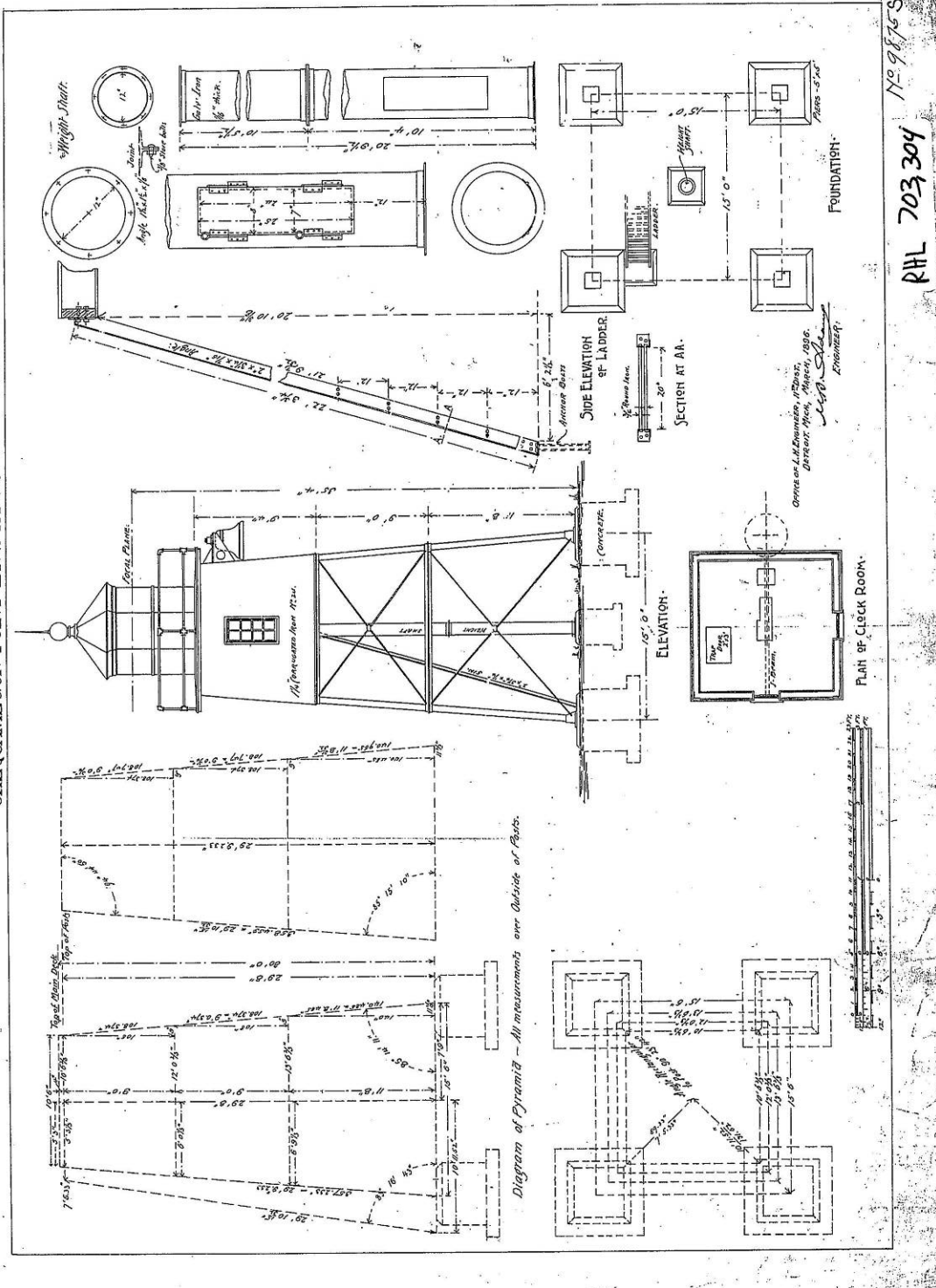


1 **Historic Drawings**



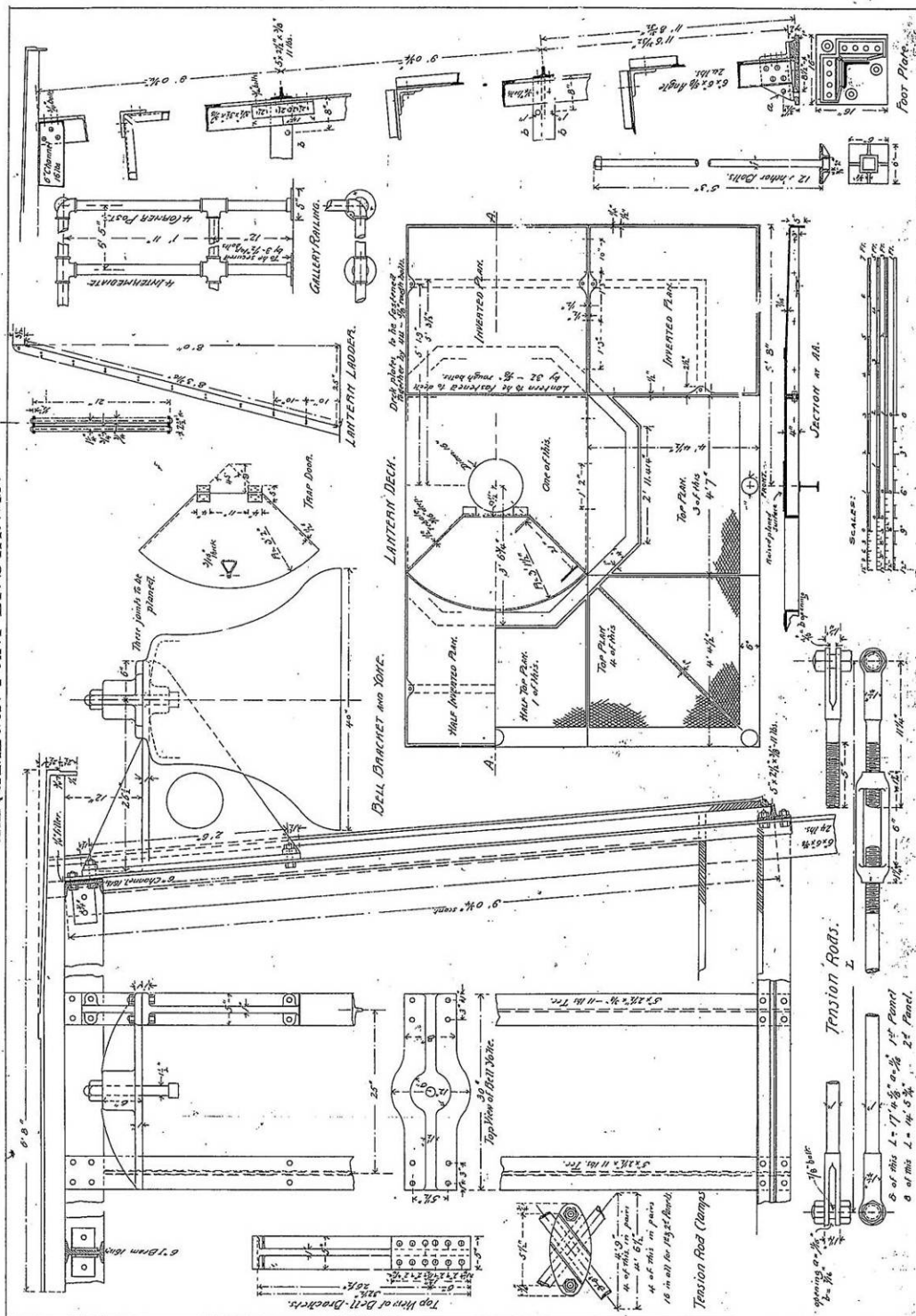
Historic Drawing LI-01: 1895 original construction drawing of LaPointe Tower

2

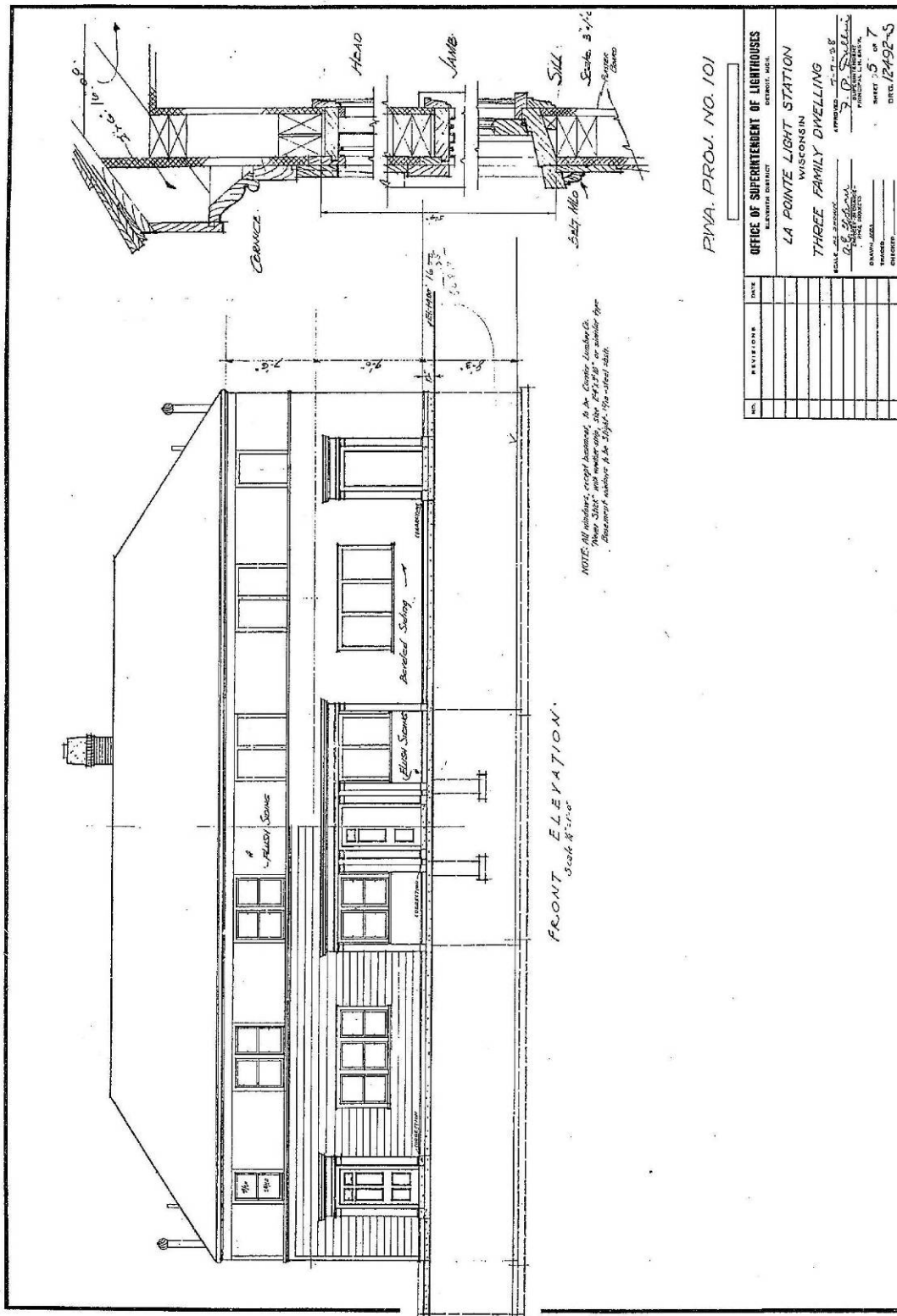


*Historic Drawing LI-02: 1896 original construction drawing of Chequamegon Point Tower*

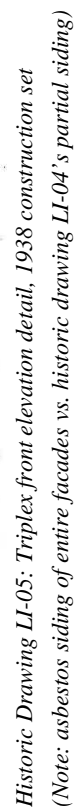
CHEQUAMEGON POINT LT. STA. WIS.

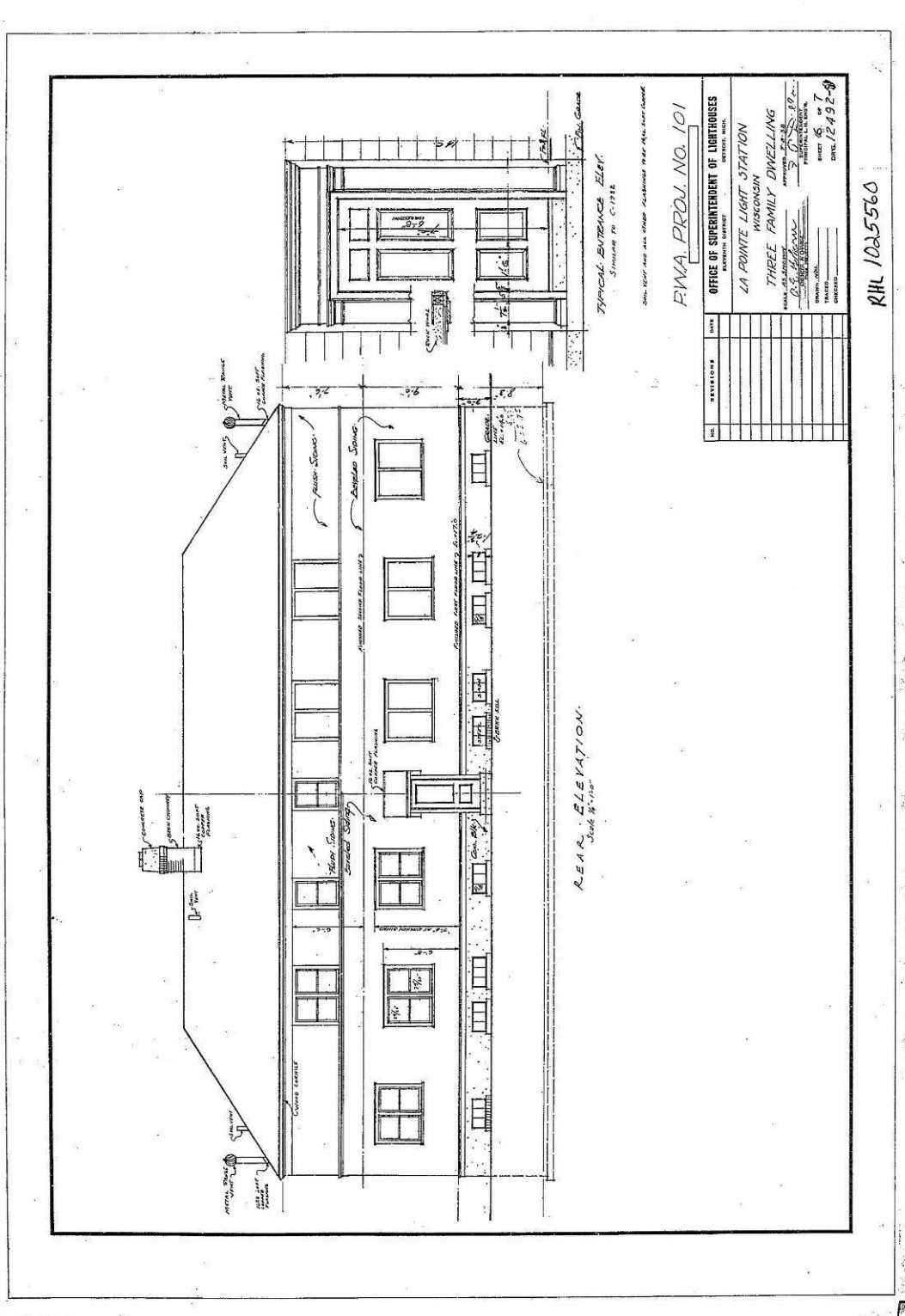


Historic Drawing LI-03: Detail of Fog Signal Bell on Chequamegon Point Tower (most likely 1896)

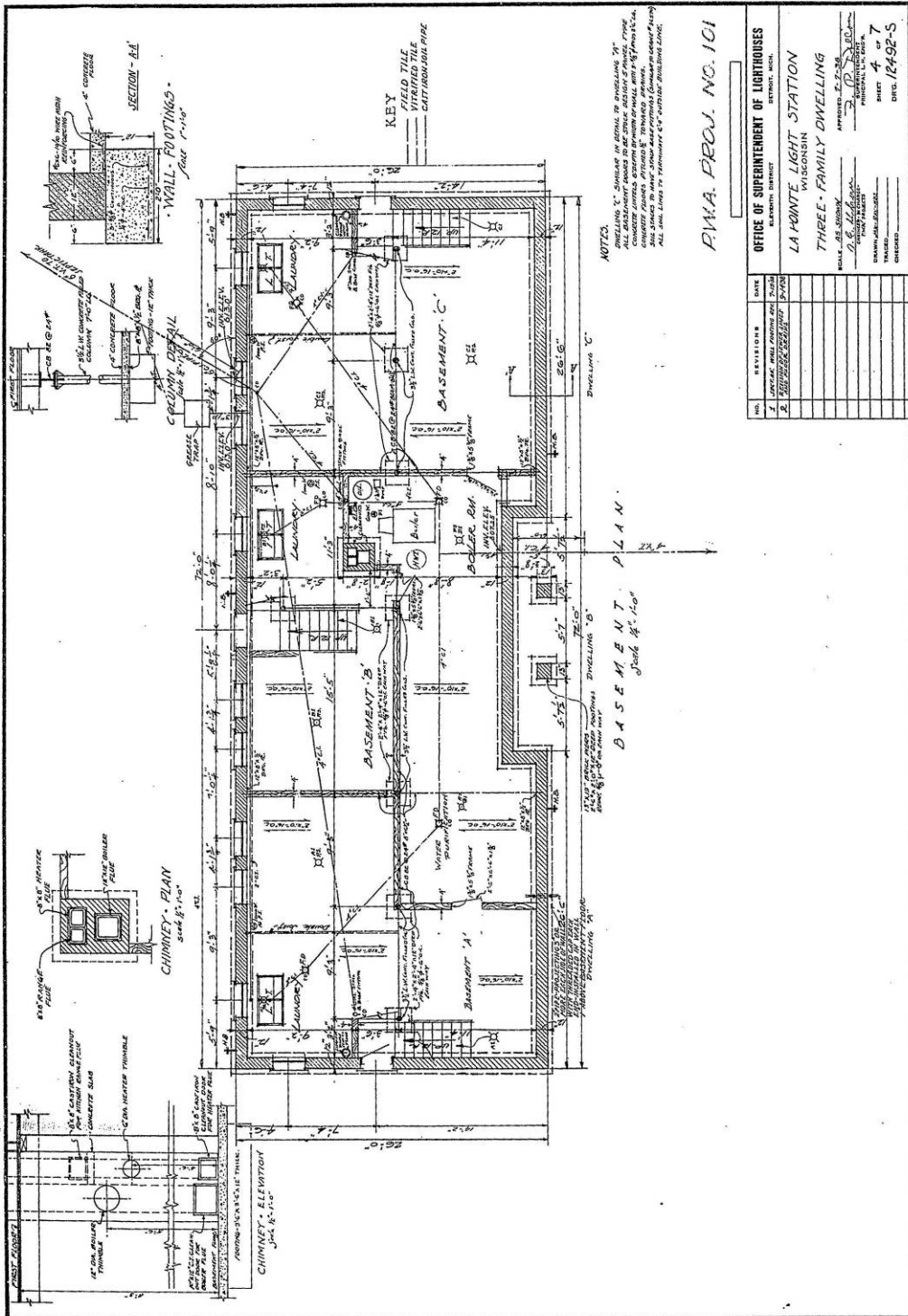


Historic Drawing LL-04: Triplex front elevation, 1938 construction set (Note: asbestos siding installed to second floor window height varied from historic drawing LL-05)

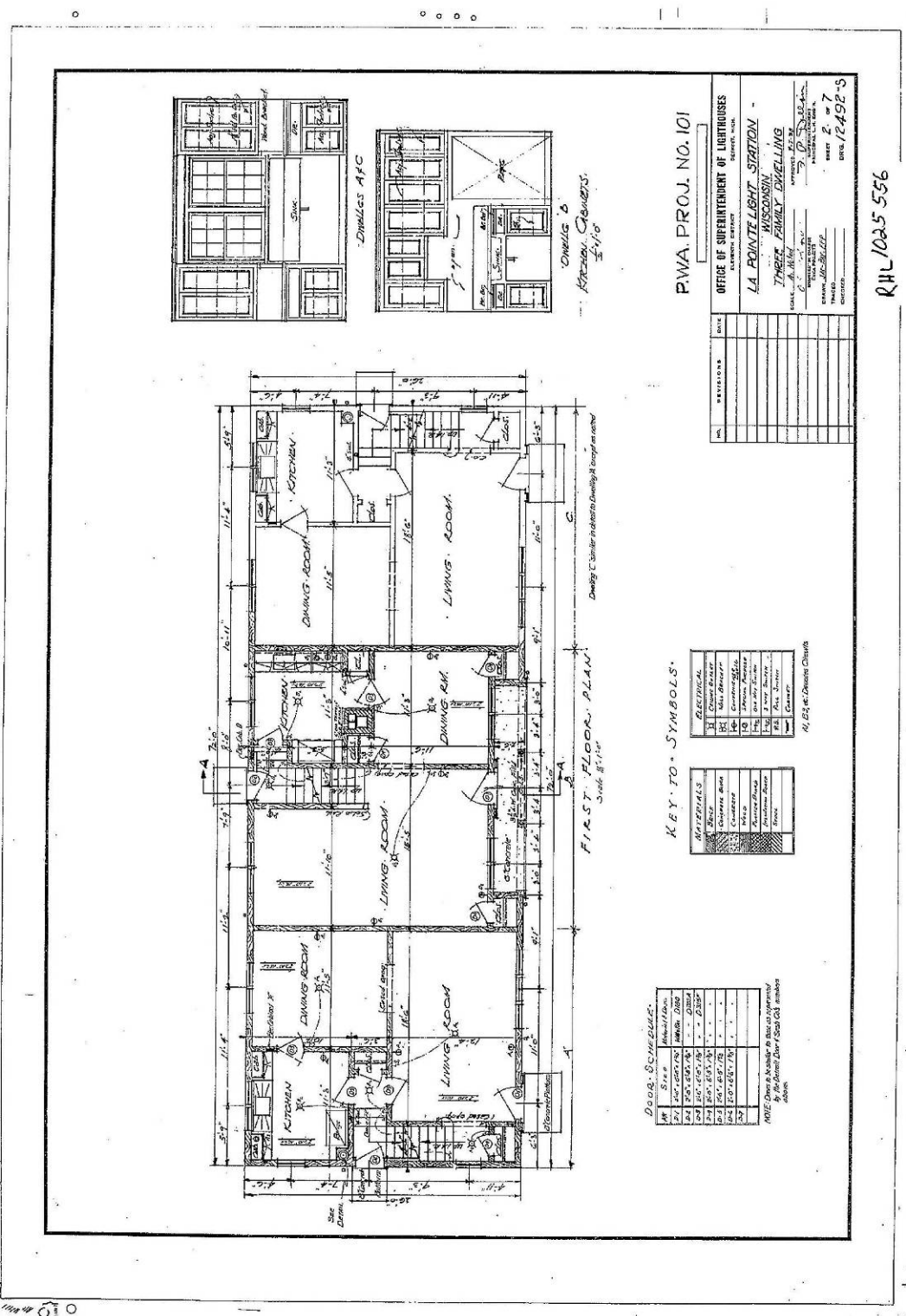








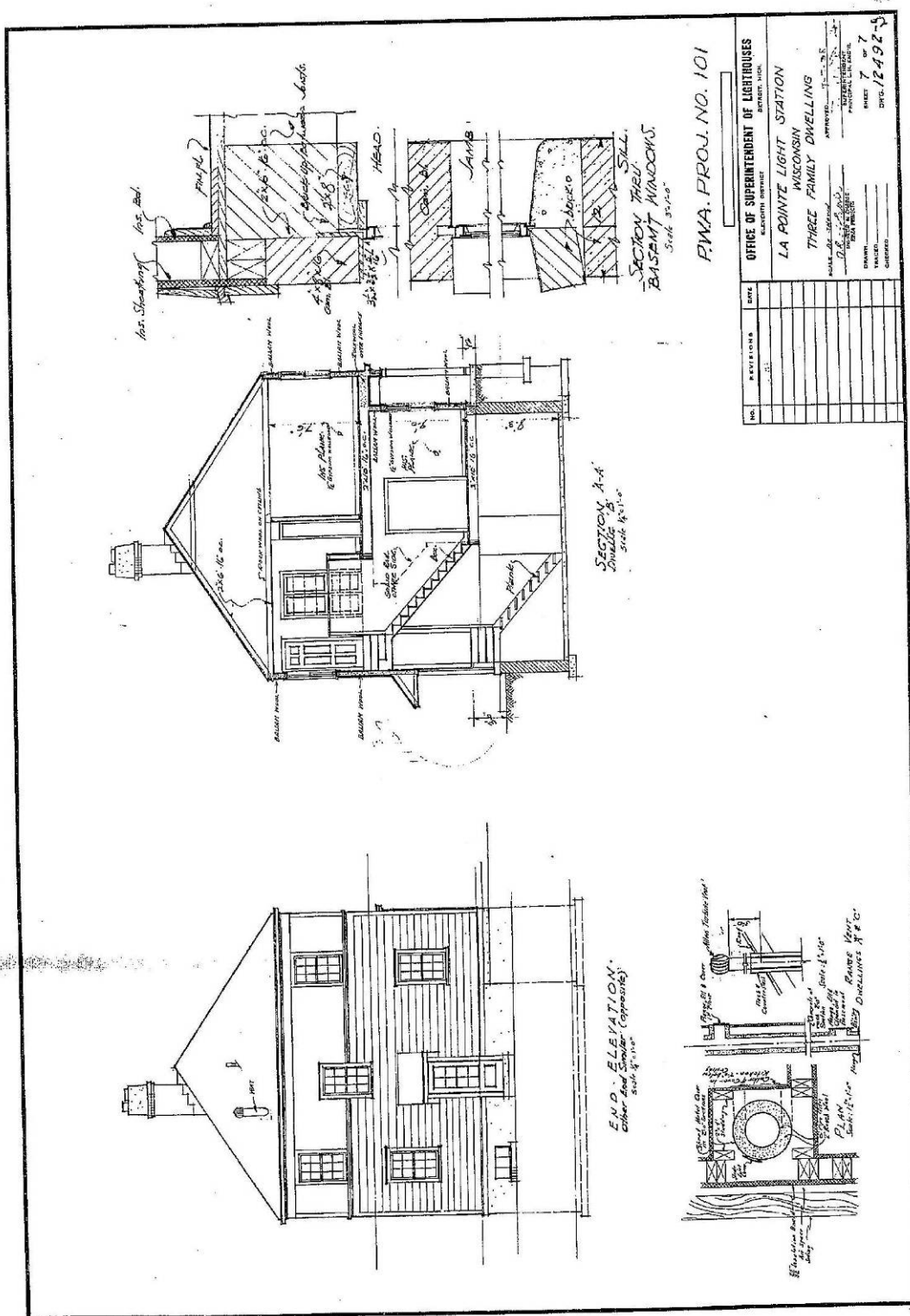
Historic Drawing LI-07: Triplex basement plan, 1938 construction set



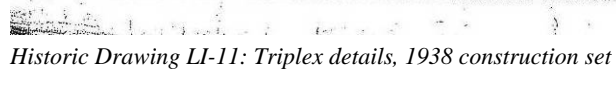
Historic Drawing LI-08: Triplex first floor plan, 1938 construction set

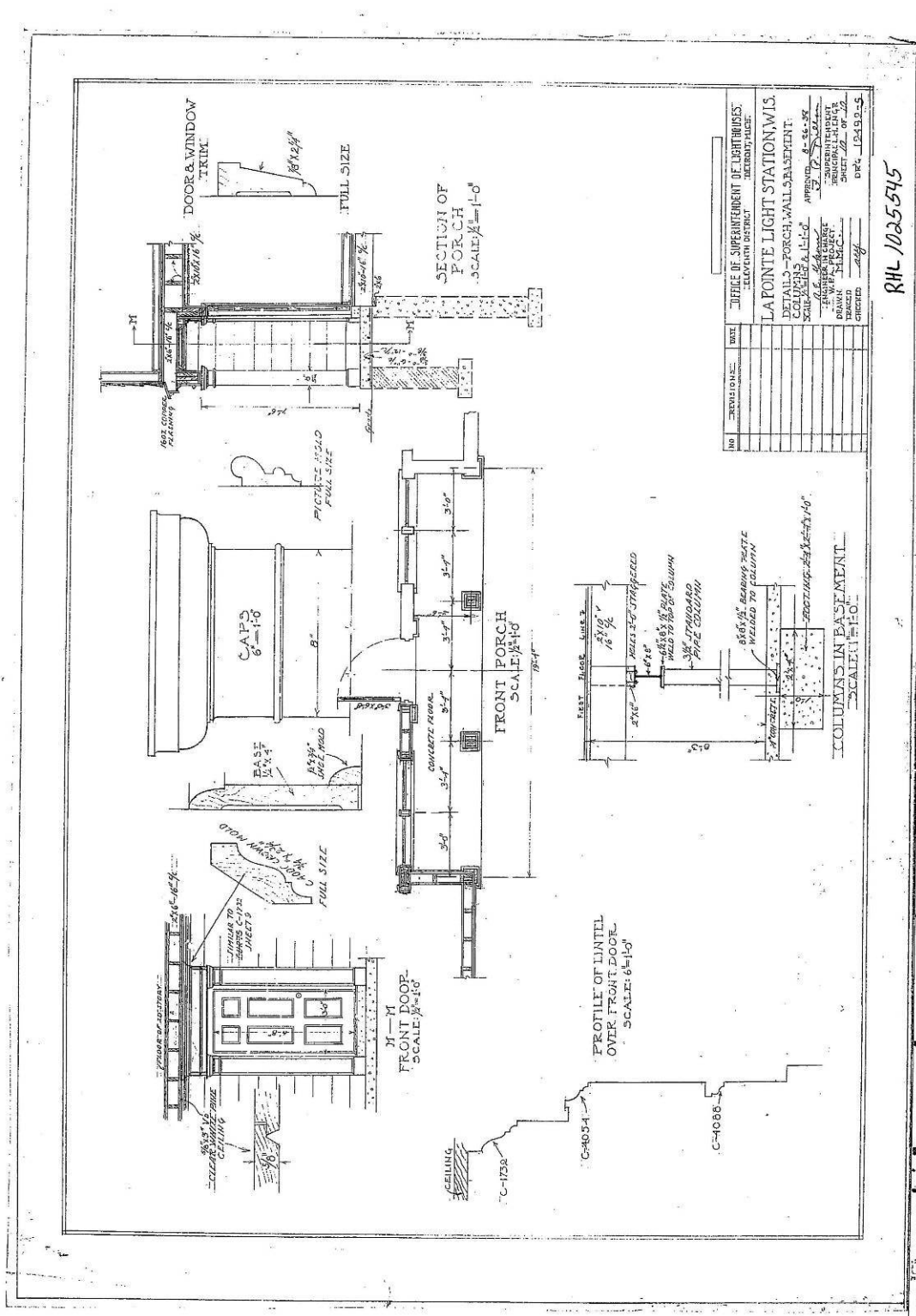




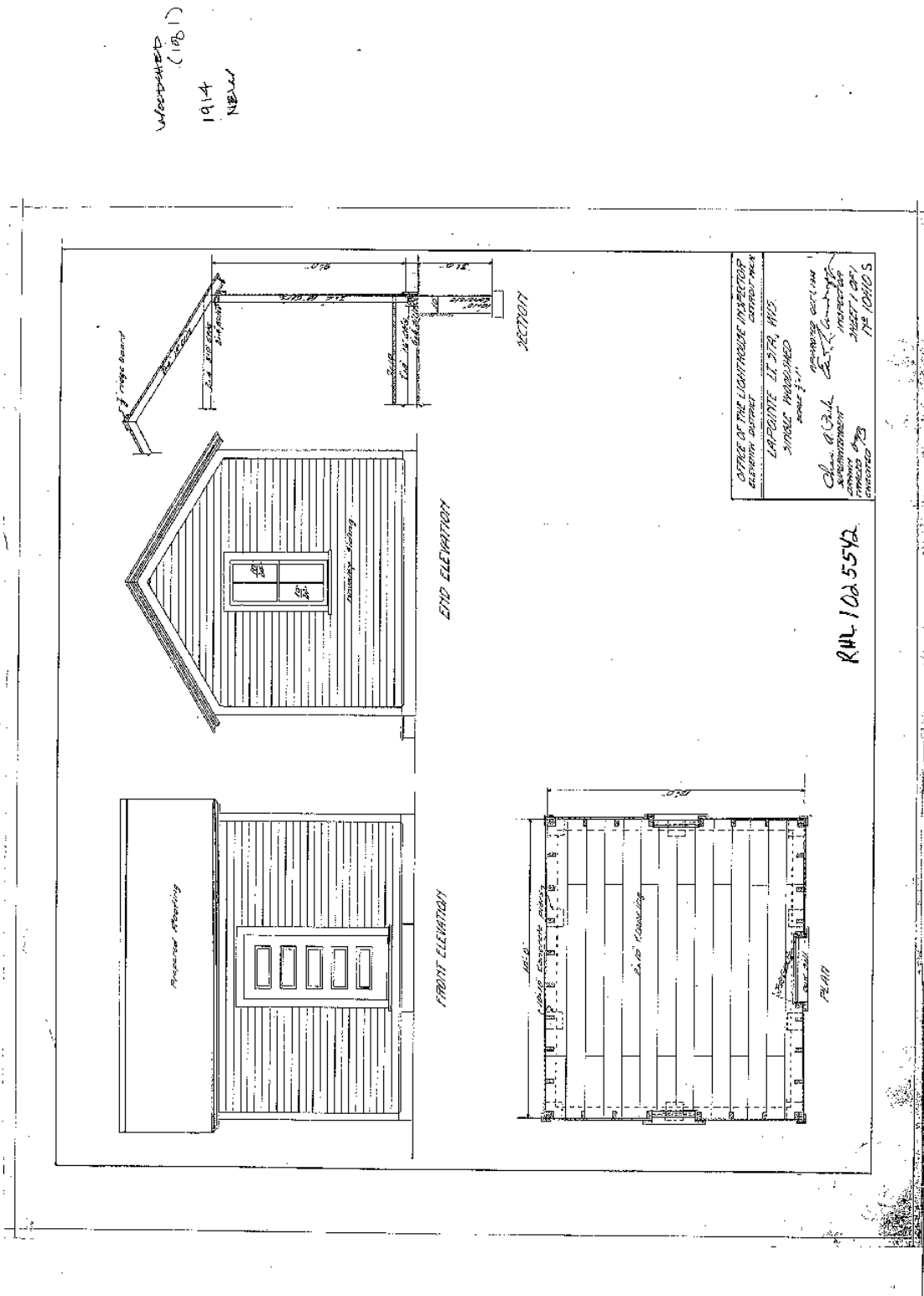


Historic Drawing LL-10: Triplex section and elevation, 1938 construction set

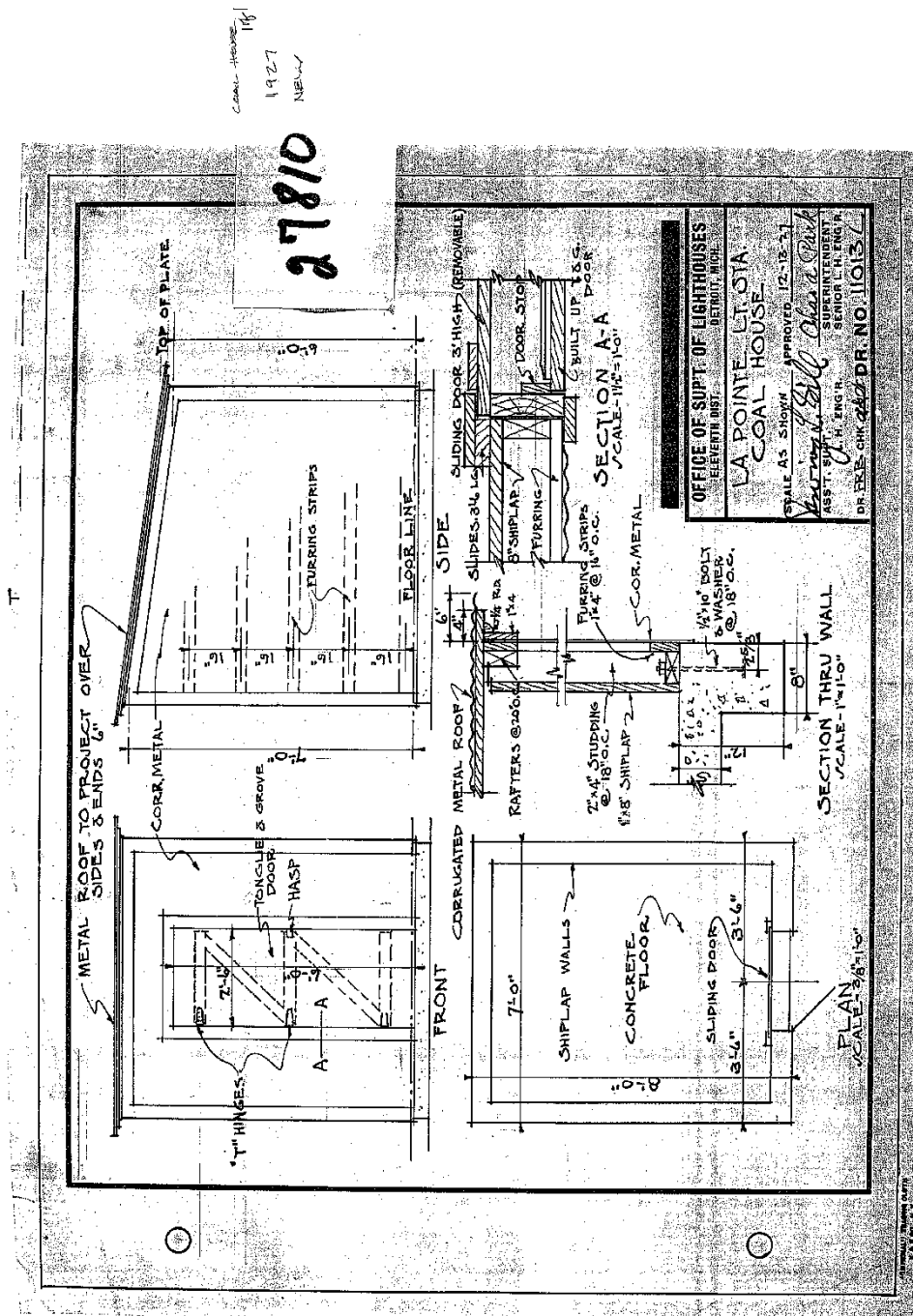




Historic Drawing LI-12: Triplex porch details, 1938 construction set



Historic Drawing LI-13: Single woodhouse, 1914 construction drawing



Historic Drawing LI-14: Coal house, 1927 construction drawing

**Existing Condition Drawings**

The primary and secondary buildings on Long Island were documented in the summer of 1990 by a team from the Historic American Buildings Survey (HABS). Since 1933, multi-format surveys in cooperation with government agencies have recorded the built environment in the United States. Measured drawings, large-format photographs and written histories have defined the survey technique for historic structures. The HABS collection currently contains detailed surveys on more than 38,600 historic structures. The following eleven drawings contain the measured drawings produced by the HABS survey from 1990.

Typically, utilitarian buildings are not included in the HABS survey. In September of 2009, the architects and historic preservation specialists from Andrews and Anderson Architects, PC surveyed the Oil Building on Long Island. These measured drawings have been included following the HABS drawings.

