

CHAPTER 4: HISTORIC STRUCTURE REPORT

DEVILS ISLAND INTRODUCTION

The following sections commence the HSR for Devils Island. The disciplines of Architecture, Structural, Mechanical (HVAC and plumbing), Electrical and Environmental Engineering are addressed individually (refer to Volume I, Chapters 1 and 2 for more details on report organization and methodology). The Island's extant buildings include:

- Light Station Tower
- Keepers Quarters
- Assistant Keepers Quarters
- Fog Signal Building
- Oil House #1
- Oil House #2
- Tramway Engine Building
- Boathouse

The original construction of each building is discussed, followed by its specific history/chronology of alterations (determined by studying historic photos, historic drawings, examining park records and archives and on site investigations and observations by the Study Team).

The Physical Description section describes the current conditions, by discipline and by component, as observed on site during the September 2009 site visit. Each component has been given a condition rating (as outlined in Volume I, Chapter 2: Methodology) in the Condition Assessment section. Treatment Recommendations are based on the preferred alternative of the May 2010 Value Analysis/CBA conducted at the park.

Historic Photographs

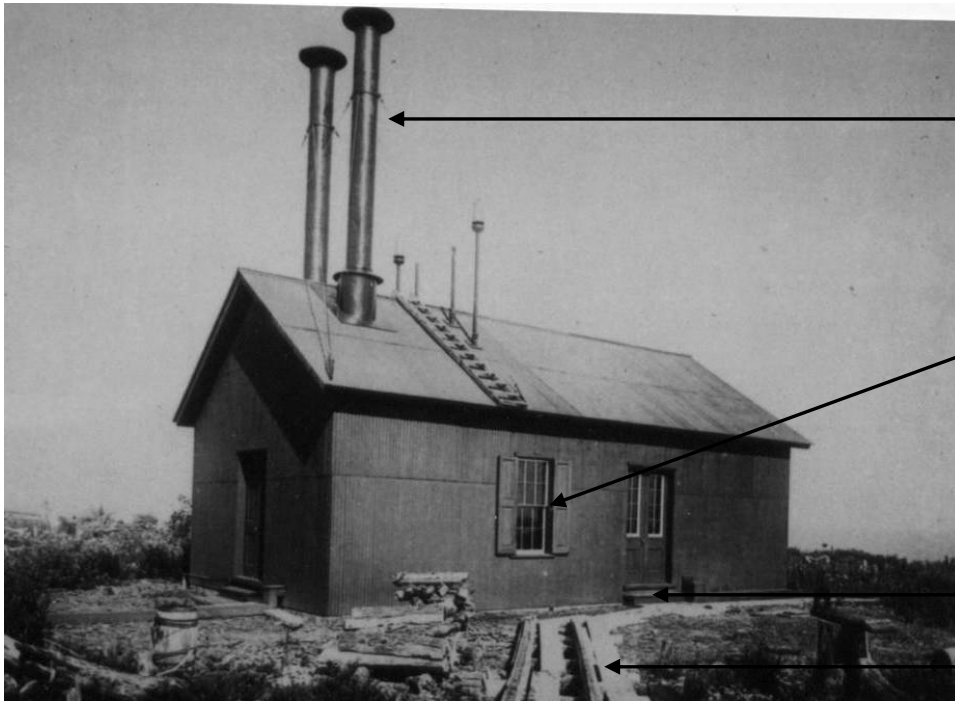


Temporary Wood Tower

Non Extant Wood Structures

Oil House

Historic Image DI-01: Keepers Quarters north and west elevations, 1893 (Source: NPS APIS Archives)



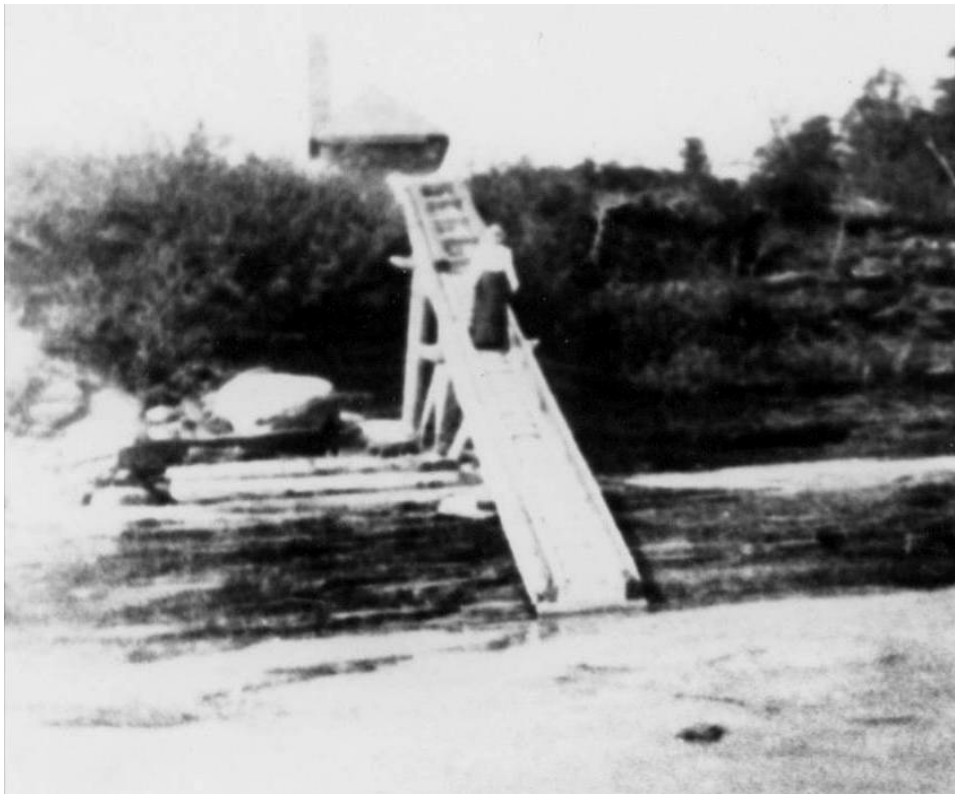
Stacks for Two Fog Signals

6-over-6 Window with
Shutters, Current Window is
1-over-1

Stairs, No Ramp

Tramway Tracks

Historic Image DI-02: Fog Signal Building east elevation, 1893 (Source: NPS APIS Archives)



Historic Image DI-03: Tram ramp with Tramway Engine Building in background, unknown date (Source: NPS APIS Archives)



Temporary Wood Tower

Wood Frame Store House

Non Extant Wood Structure

Historic Image DI-04: Temporary wood tower next to wood frame store house, 1901 (Source: NPS APIS Archives)



Tower without Bracing

Original Windows

Shed Roof on Kitchen Entry

Historic Image DI-05: Keepers Quarters east elevation, c. 1901 (Source: NPS APIS Archives)

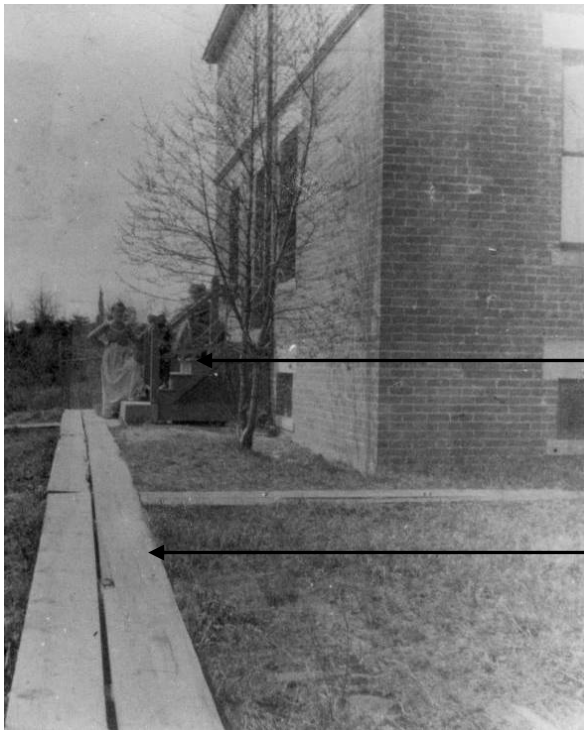


Original Ridge Cresting on
Assistant Keepers Quarters

Shed Roof

Wood Siding

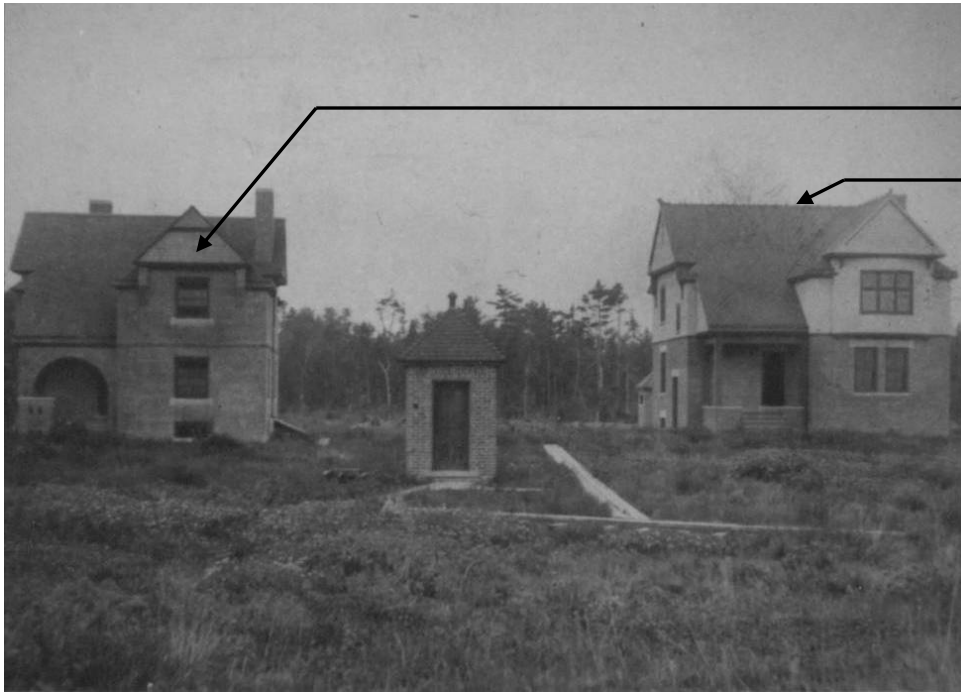
Historic Image DI-06: Close-up of Kitchen Entry of the Keepers Quarters, c. 1901 (Source: NPS APIS Archives)



Assistant Keepers Quarters
Kitchen Entry Wood Stairs

Wood Planking for Walkways

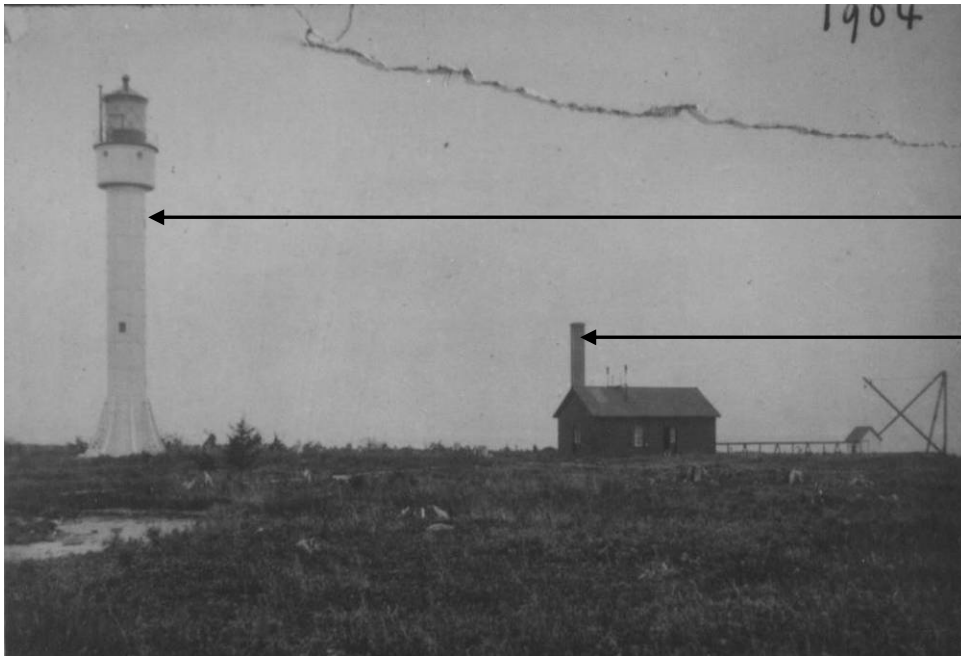
Historic Image DI-07: Wood walkways at quarters, c. 1908 (Source: NPS APIS Archives)



Keepers Quarters

Original Ridge Cresting
on Assistant. Keepers
Quarters

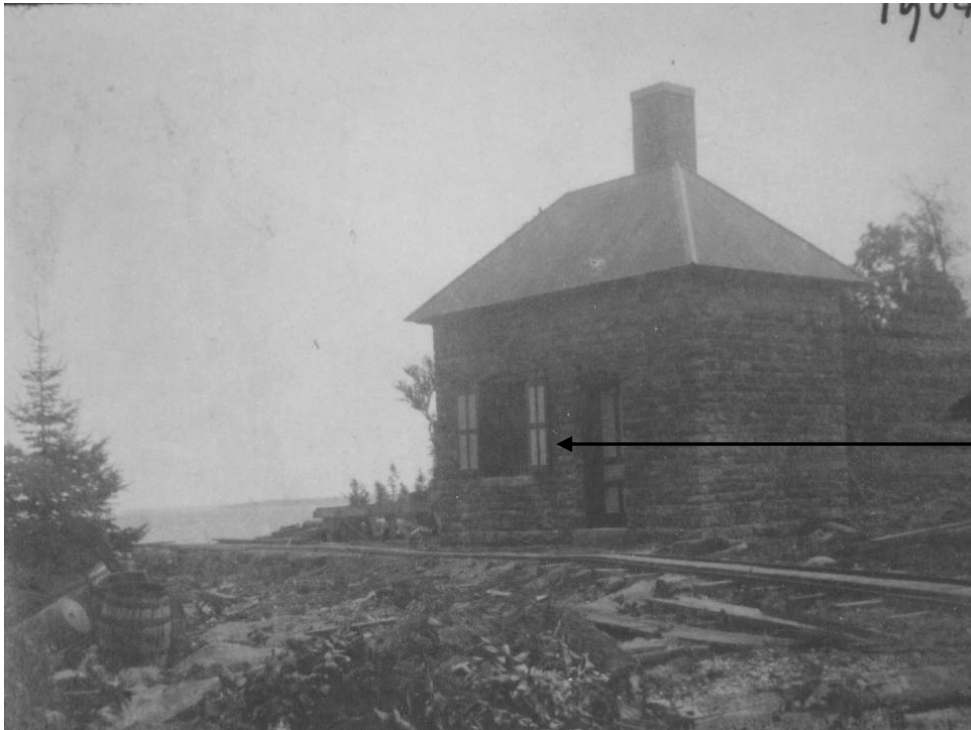
Historic Image DI-08: Oil House #1 north elevation, 1904 (Source: NPS APIS Archives)



Tower without Bracing

Masonry Chimney on Fog
Signal Building

Historic Image DI-09: Tower without steel supports looking northwest, 1904 (Source: NPS APIS Archives)



Wood Shutters

Historic Image DI-10: Tramway Engine Building north and west elevations, 1904 (Source: NPS APIS Archives)



West Shed Appurtenance
Visible

Historic Image DI-11: Fog Signal Building and L. Benton, looking north, 1905-1910 (Source: NPS APIS Archives, Lee Benton Collection)



Tramway Tracks, Non Extant,
on Wooden Ramp



Ridge Cresting

Non Extant Flagpole

Concrete Walkways

Historic Image DI-13: Concrete walkways at quarters, 1916 (Source: NPS APIS Archives)

1



Non Extant
Flagpole

Non Extant
2nd Assistant
Keepers
Quarters

Non Extant
Barn

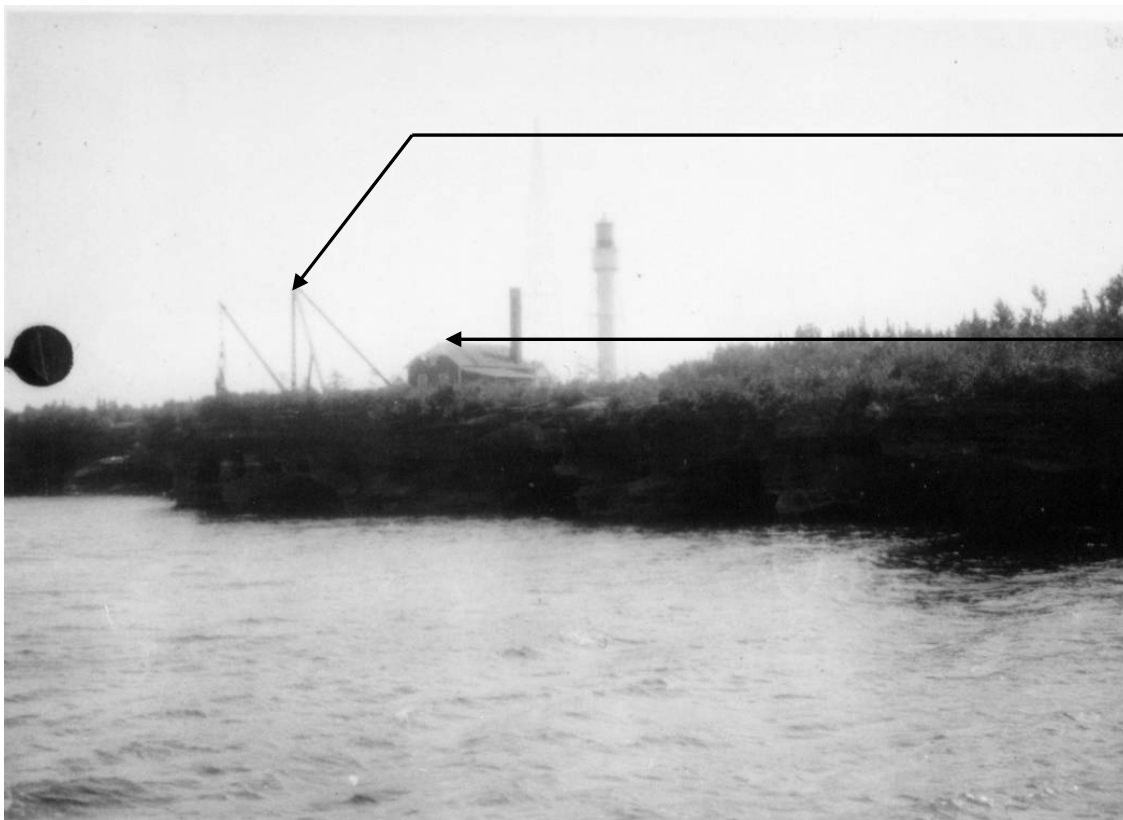
2

3

4

Historic Image DI-14: Second Assistant's Quarters and barn east of the Keepers Quarters, c. 1920 (Source: NPS APIS Archives)

5



Non Extant Derrick

Fog Signal Building
with Clipped Gable
Roof

6

7

Historic Image DI-15: Fog Signal Building and Tower, c. 1930 (Source: NPS APIS Archives)

8



Historic Image DI-16: Tram ramp, c. 1940 (Source: NPS APIS Archives)



Double Exterior
Door, Screen or
Glass

Historic Image DI-17: Fog Signal Building's east elevation entry door, c. 1940 (Source: NPS APIS Archives)

1



2

3

Historic Image DI-18: Tram cart, c. 1940 (Source: NPS APIS Archives)

4

5



Non Extant Second
Assistant Keepers
Quarters

Non Extant Oil Tank

6

7

Historic Image DI-19: The three quarters looking southeast, 1946 (Source: NPS APIS Archives)

8



Historic Image DI-20: Boathouse dock's cribbing, 1978 (Source: NPS APIS Archives)



Oval Window Replaced
with Casement, All
Windows Replaced

Historic Image DI-21: Keepers Quarters east elevation, c. 1980 (Source: NPS APIS Archives)



Boarded Up Windows

1
2
3
4

Historic Image DI-22: Assistant Keepers Quarters looking northwest, 1980 (Source: NPS APIS Archives)