

## CHAPTER 4: HISTORIC STRUCTURE REPORT

### OUTER ISLAND INTRODUCTION

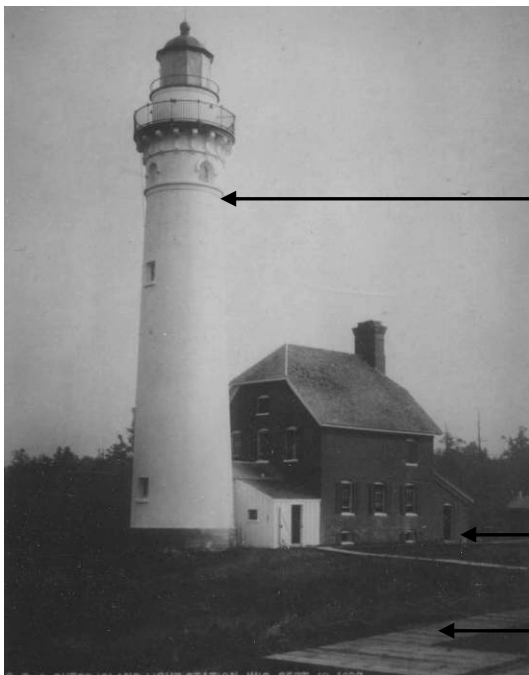
The following sections commence the HSR for Outer Island. The disciplines of Architecture, Structural, Mechanical (HVAC and plumbing), Electrical and Environmental Engineering are addressed individually (refer to Volume I Chapters 1 and 2 for more details on report organization and methodology). The Island's extant buildings include:

- Outer Island Tower
- Keepers Quarters
- Fog Signal Building
- Oil Storage
- Privy

Original construction of each building is discussed, followed by its specific history/chronology of alterations (determined by studying historic photos, historic drawings, examining park records and archives and on site investigations and observations by the Study Team).

The Physical Description section describes the current conditions, by discipline and by component, as observed on site during the September 2009 site visit. Each component has been given a condition rating (as outlined in Volume I, Chapter 2: Methodology) in the Condition Assessment section. Treatment Recommendations are based on the Preferred Alternative of the May 2010 Value Analysis/CBA conducted at the park.

#### *Historic Photographs*

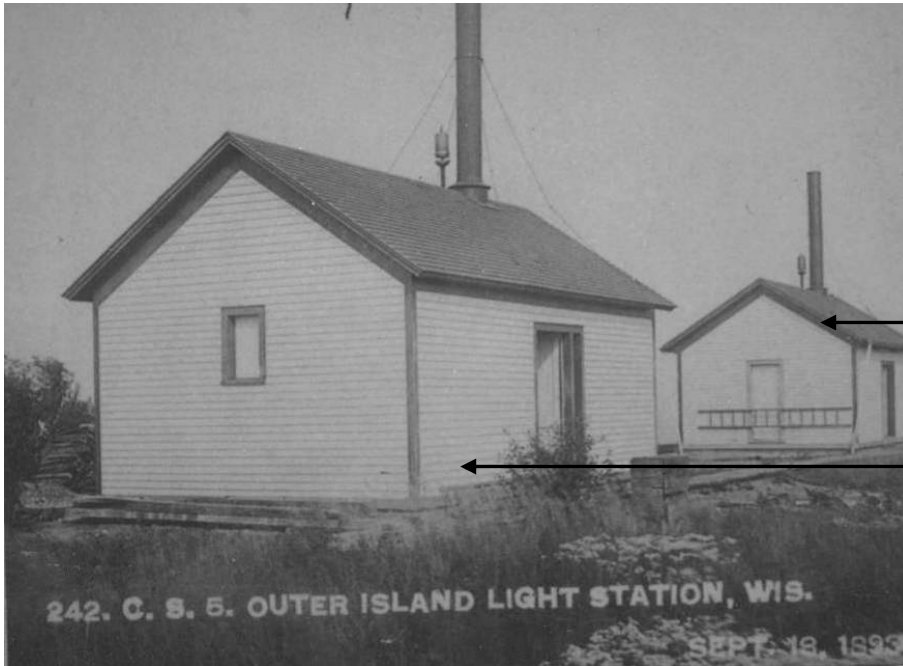


Trim Painted White,  
Not Black

No Kitchen Vestibule

Wood Walkways

*Historic Image OI-01: Northwest view of the Light Tower, 1893 (Source: NPS APIS Archives)*



East Fog Signal Building,  
a.k.a. Whistle Building #1

West Fog Signal Building,  
a.k.a. Whistle Building #2

Historic Image OI-02: Northeast view of the Fog Signal Buildings, 1893 (Source: NPS APIS Archives)



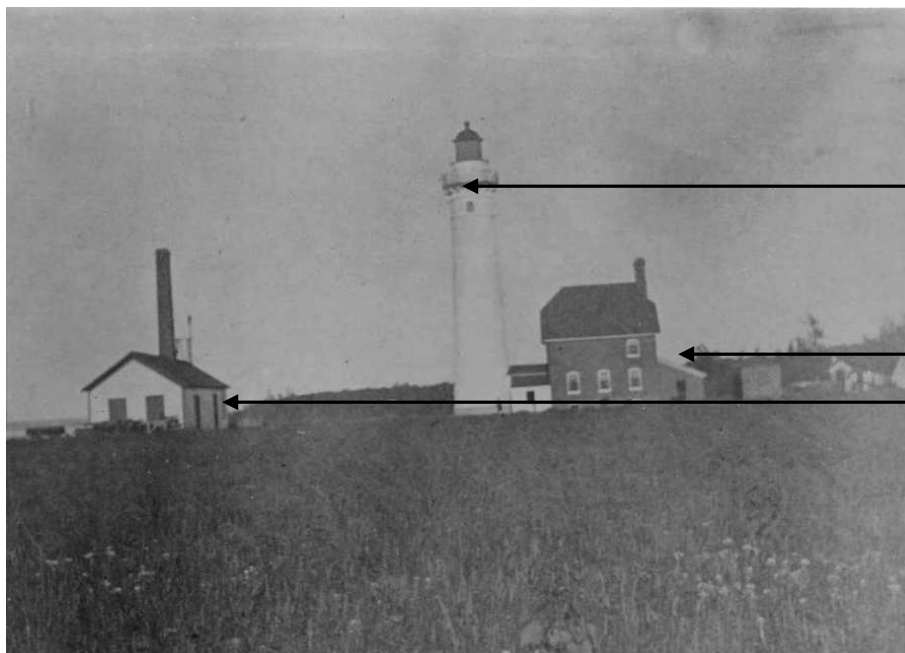
East Fog Signal  
Building's Shed

Early Hoisting Equipment

Historic Image OI-03: Southwest elevations of the Fog Signal Buildings, 1893 (Source: NPS APIS Archives)



Historic Image OI-04: South elevation of the Keepers Quarters, c. 1900 (Source: NPS APIS Archives)



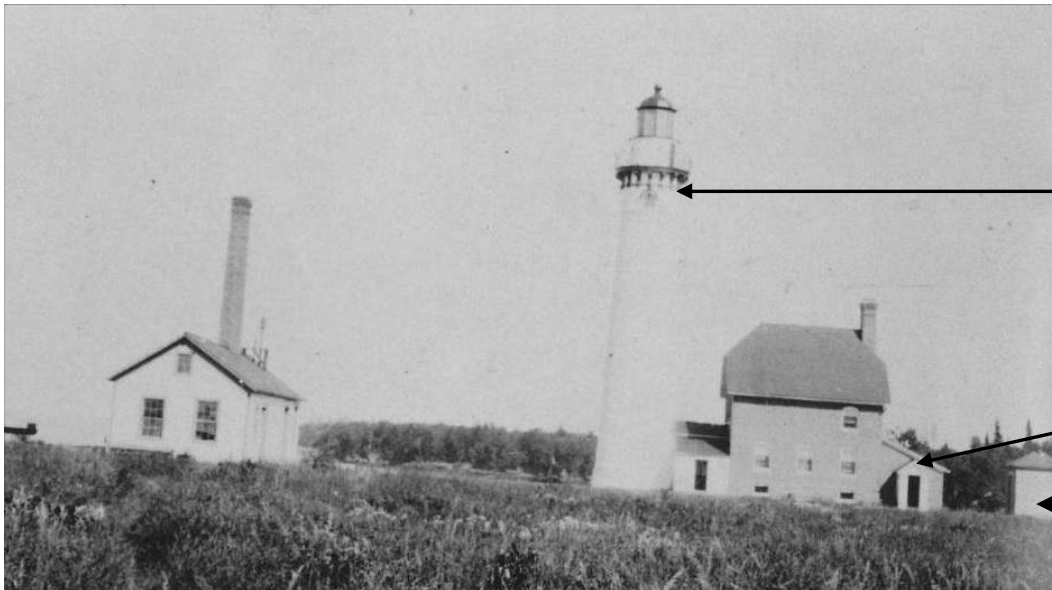
Historic Image OI-05: West elevation of the Fog Signal Building, Tower and Keepers Quarters, 1905 (Source: NPS APIS Archives)



Black Trim

Kitchen Vestibule

Historic Image OI-06: Northwest elevation of the Light Tower, 1916-1925 (Source: NPS APIS Archives)

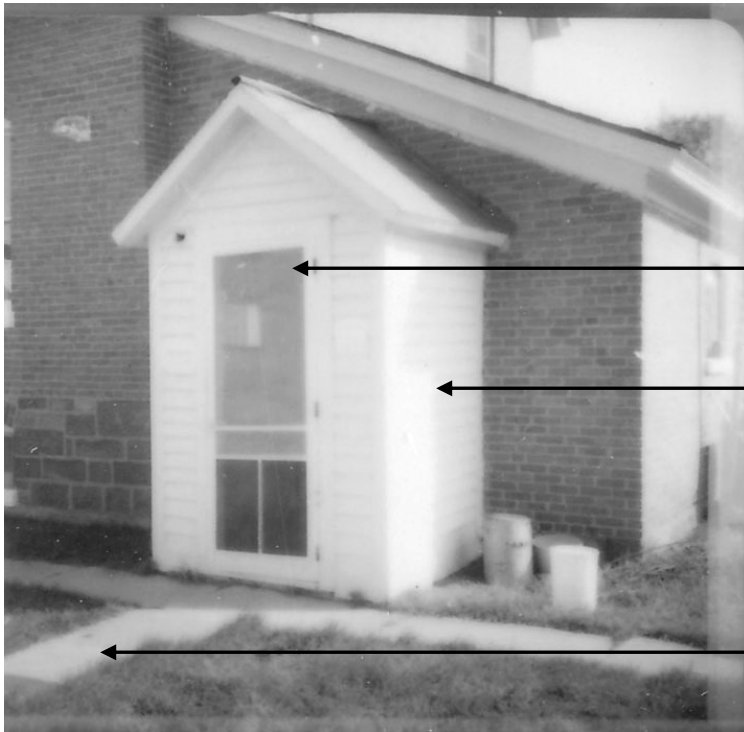


Black Trim

Kitchen Vestibule

Oil Storage

Historic Image OI-07: West elevation of the Keepers Quarters and kitchen vestibule, 1916 (Source: NPS APIS Archives)



Non Extant Screen Door

Kitchen Vestibule's Wood Clapboard Siding

Concrete Walkways

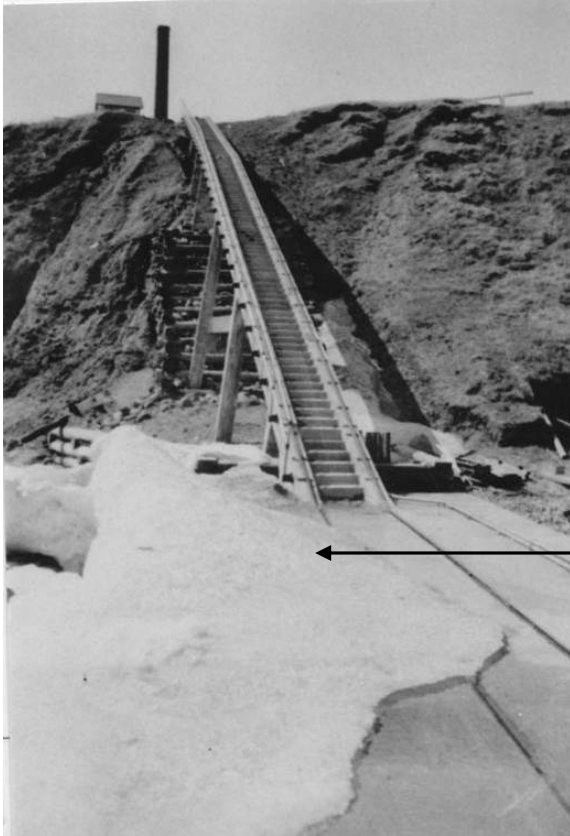
Historic Image OI-08: Kitchen vestibule's screen door, unknown date (Source: NPS APIS Archives)



Loft Added for Fog Horns

Expanded Building Compared to 1916 Image

Historic Image OI-09: North elevation of the Fog Signal Building, 1937 (Source: NPS APIS Archives)

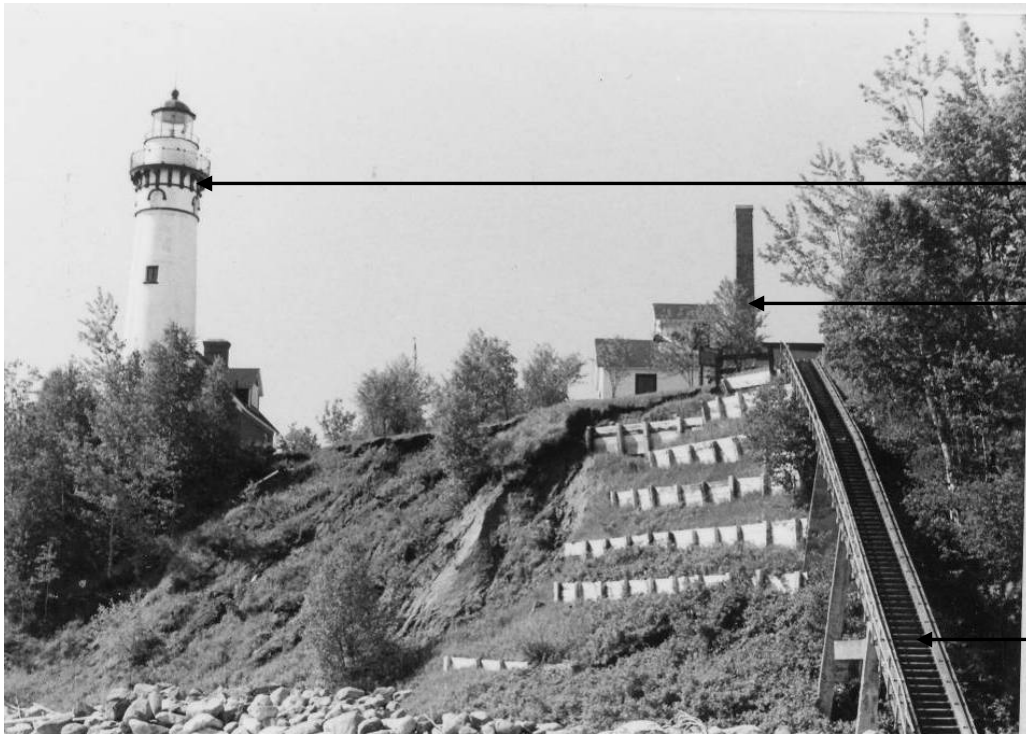


Tramway and Landing

Historic Image OI-10: View of the boat ramp and Fog Signal stack, 1937 (Source: NPS APIS Archives)



Historic Image OI-11: North elevation of the Oil Storage, unknown date (Source: NPS APIS Archives)



Black Corbel and  
Window Trim

Fog Signal Building Loft

Tramway

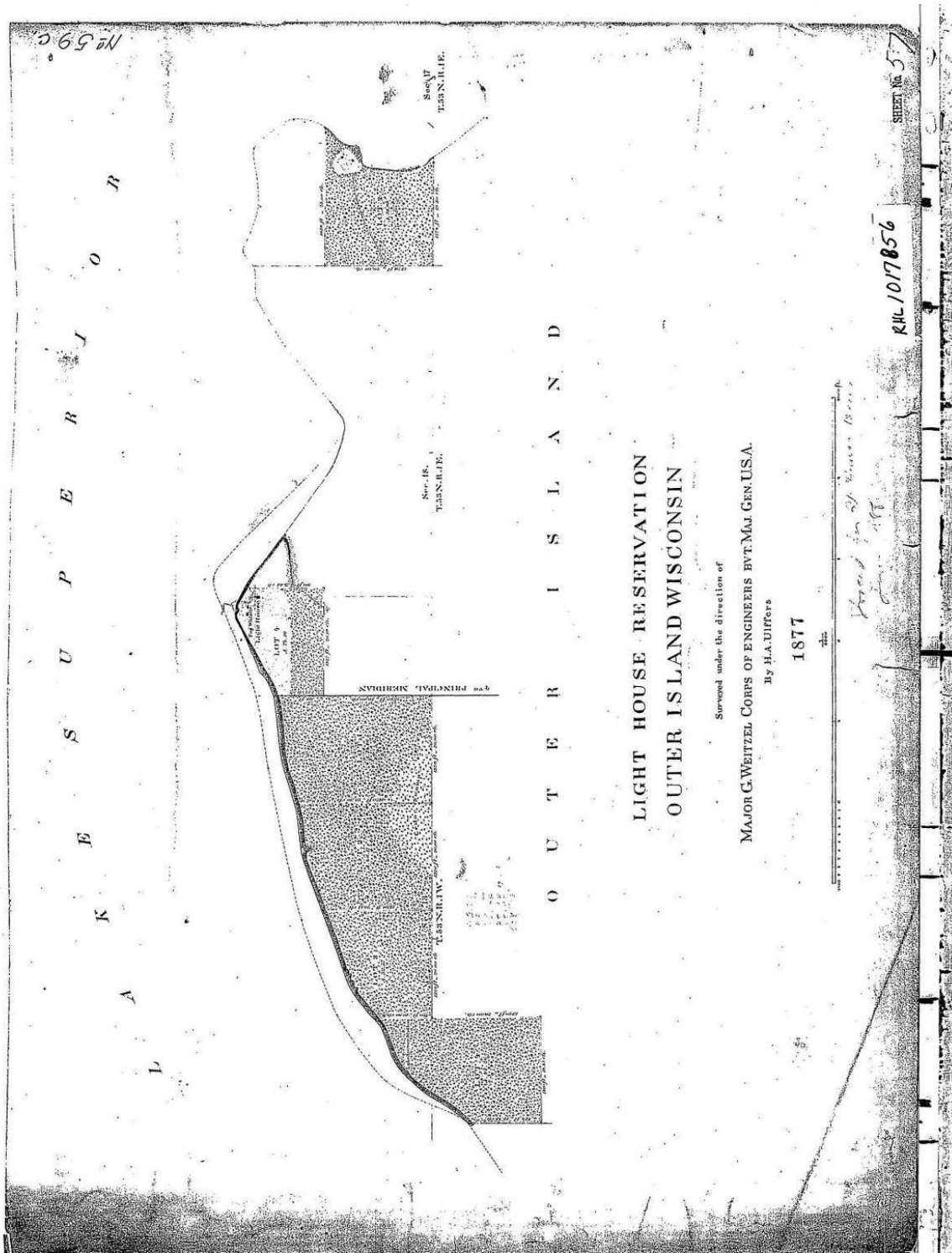
Historic Image OI-12: Shoreline stabilization work, c. 1980 (Source: NPS APIS Archives)



Covered Windows

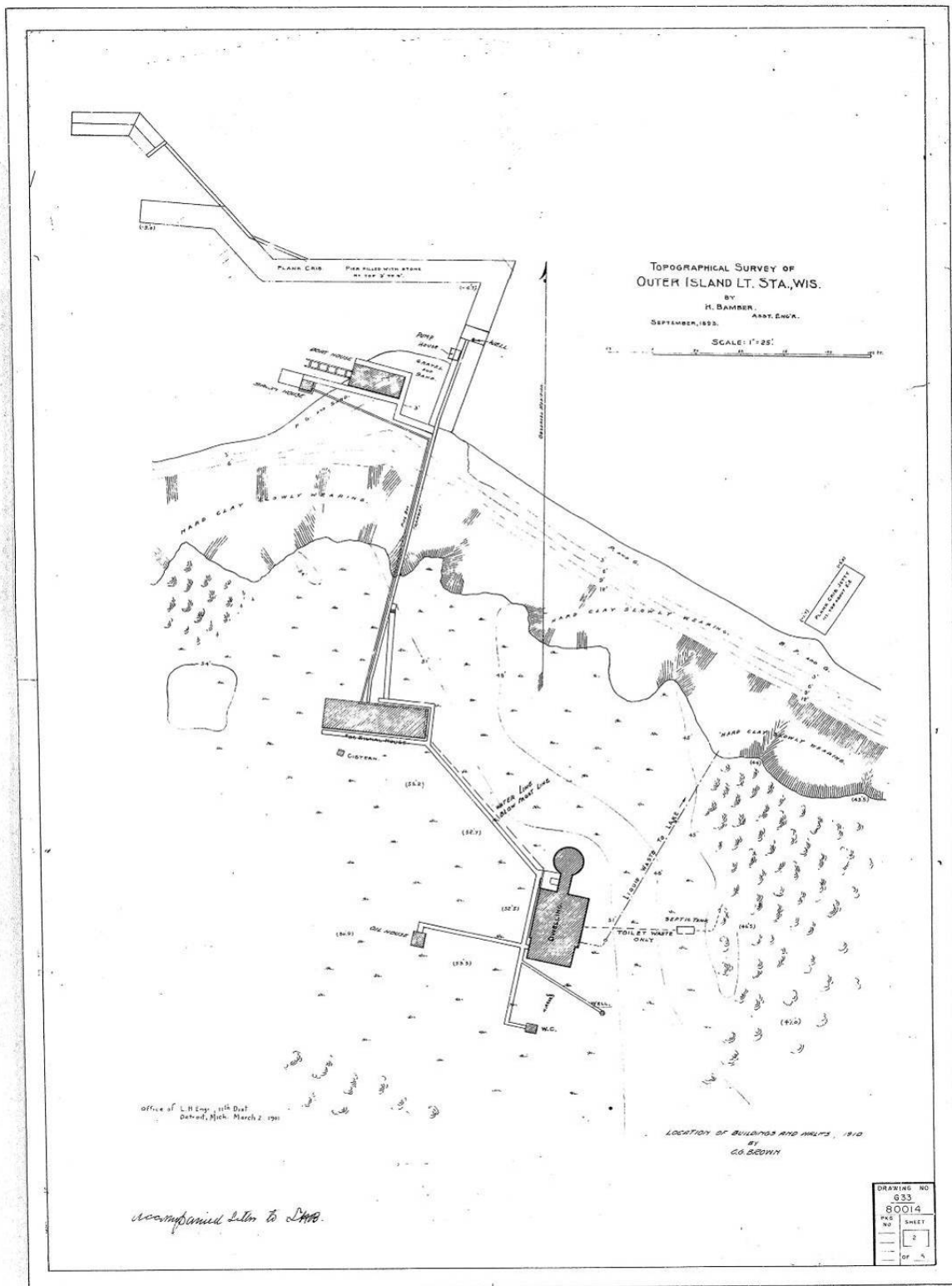
Historic Image OI-13: West elevation of the Keepers Quarters, 1981 (Source: NPS APIS Archives)

1 **Historic Drawings**

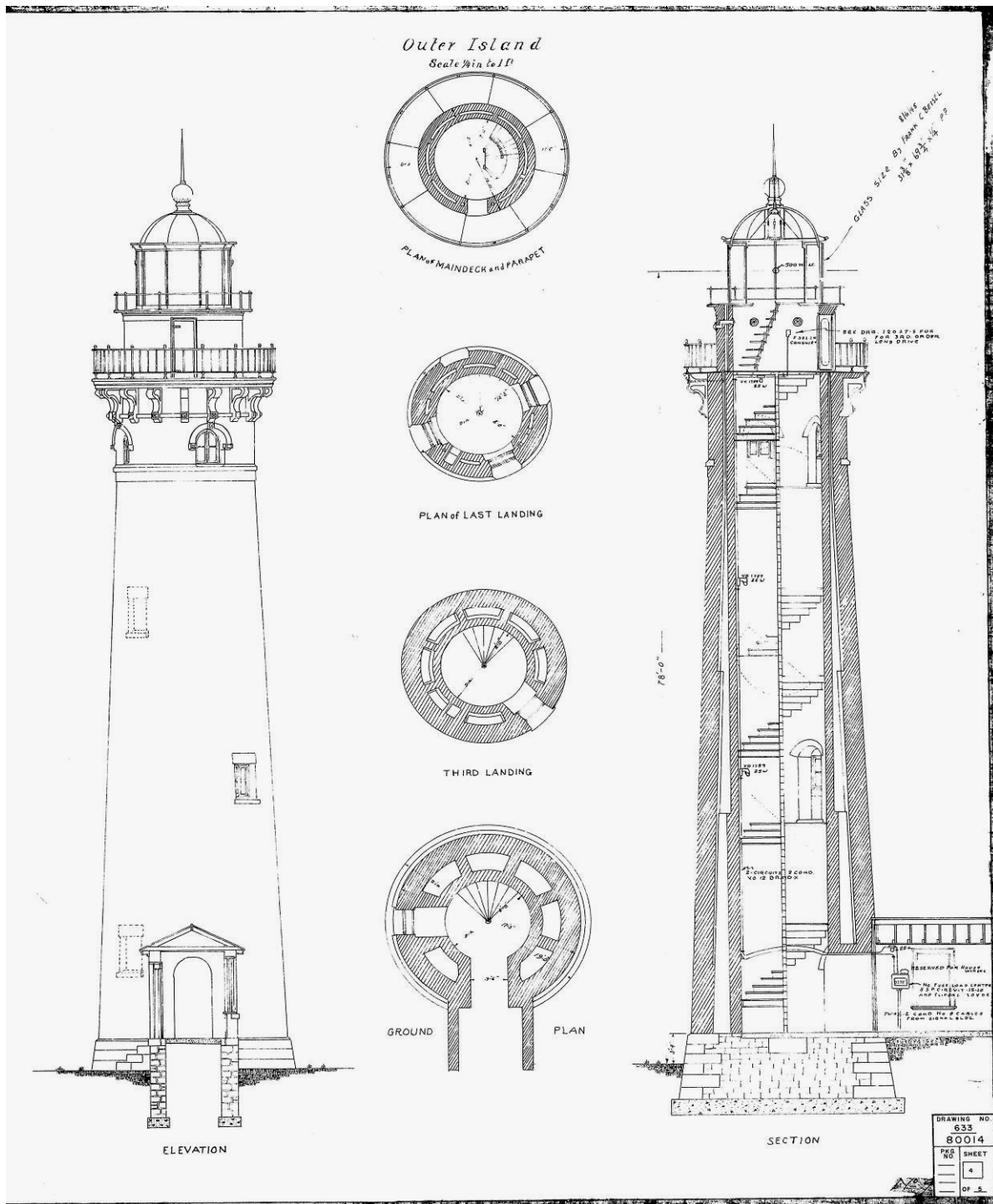


Historic Drawing OI-01: 1877 Site Plan

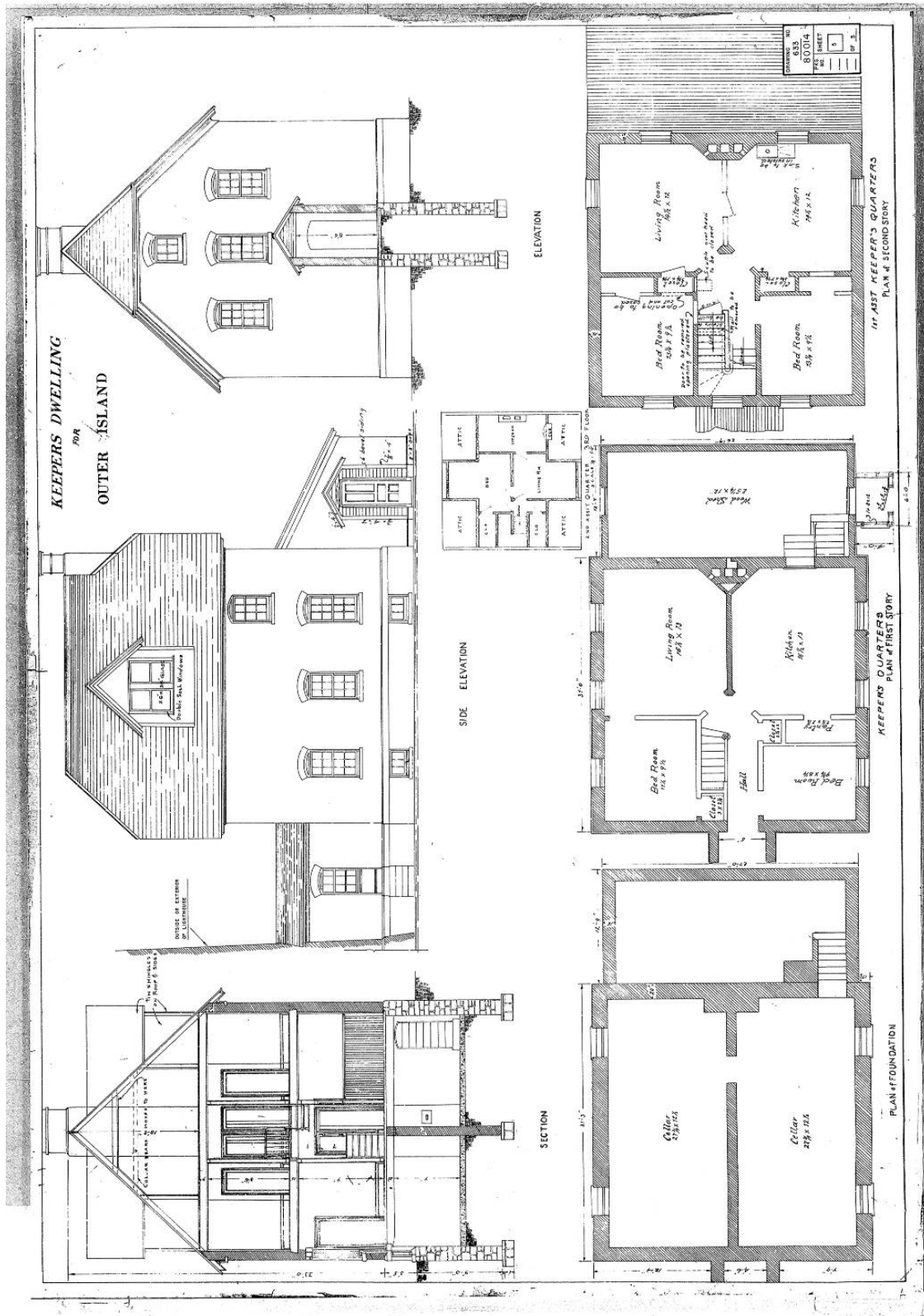




Historic Drawing OI-03: September, 1893 Survey by H. Bamber, revised 1901 and 1911

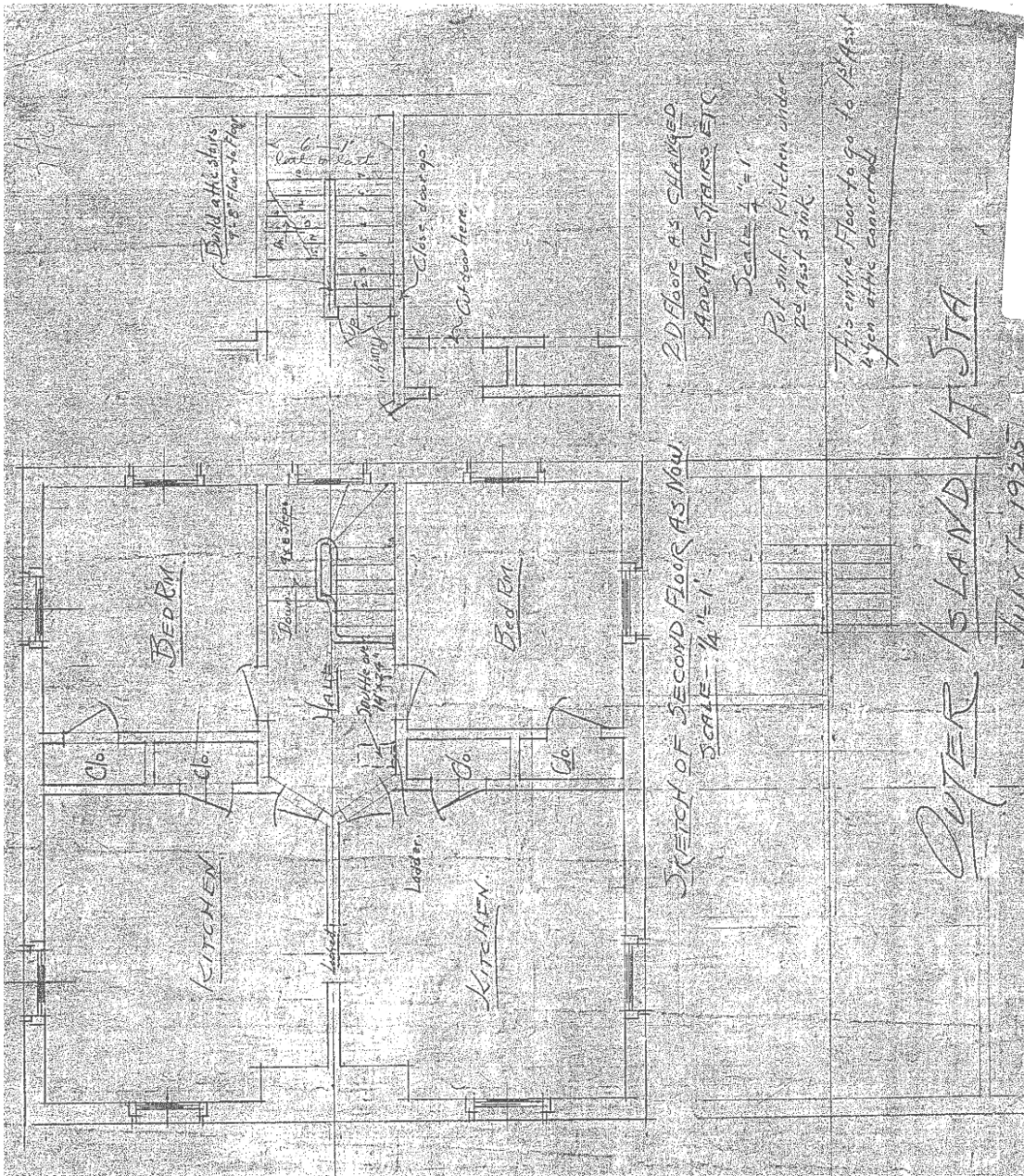


*Historic Drawing OI-04: Undated plan and elevations of Tower*



Historic Drawing OI-05: Plan of Keepers Quarters, undated (assumed original with 1925 additions overlaid)

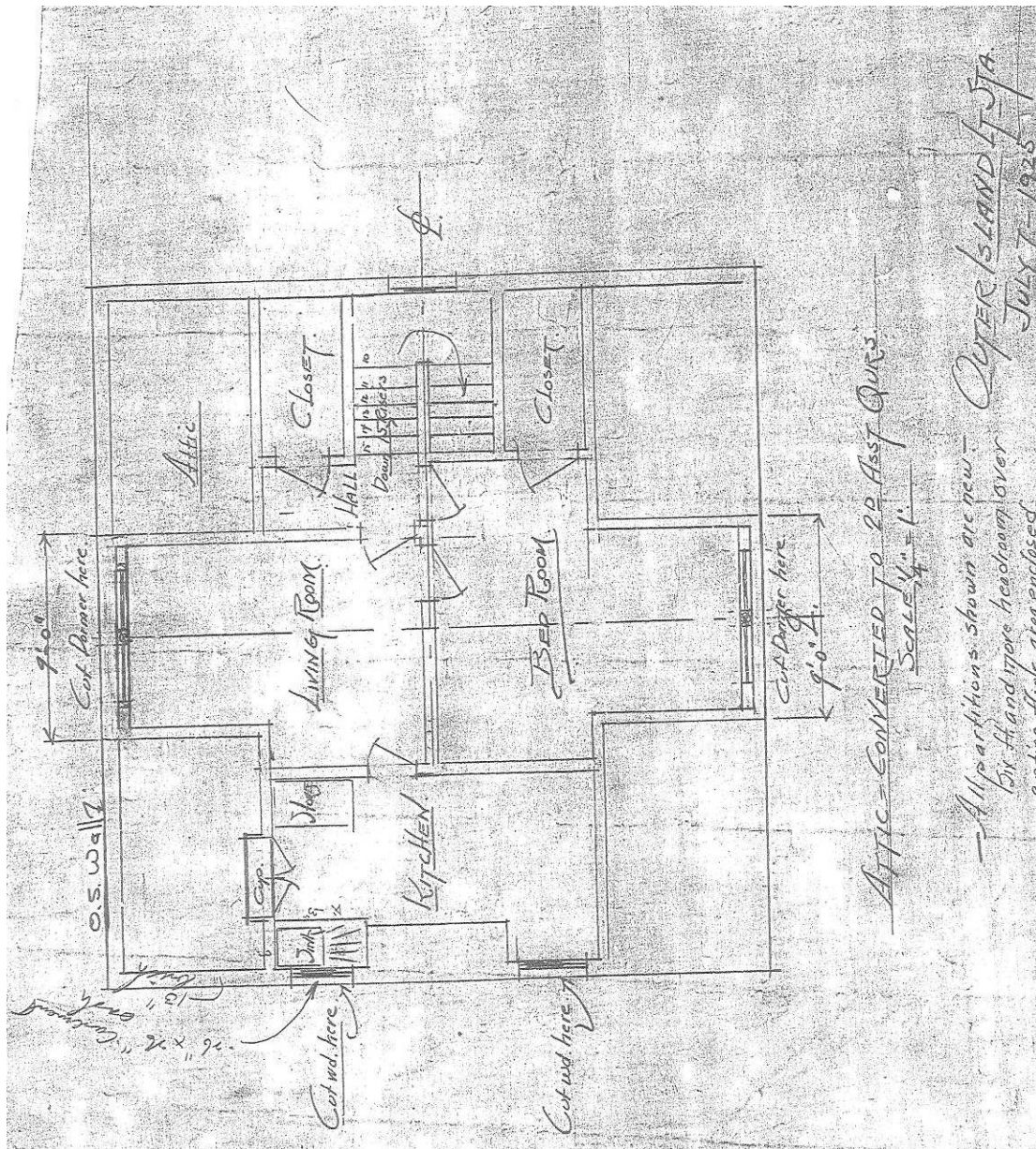
1  
2  
3  
4



Historic Drawing OI-06: 1925 Plan to convert second floor of Keepers Quarters into one living space for first assistant

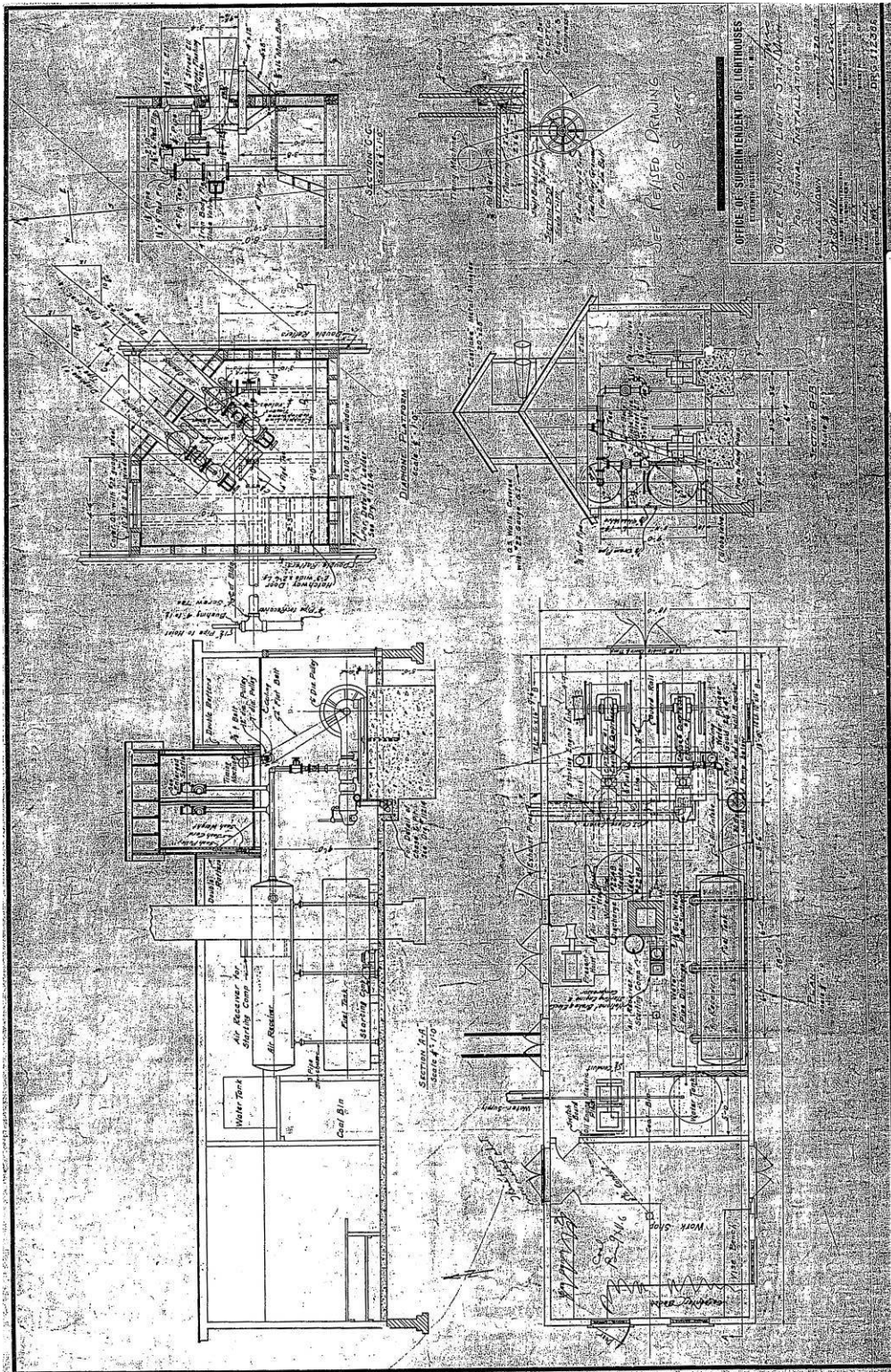
5  
6  
7  
8  
9  
10  
11  
12  
13  
14

1  
2  
3  
4



5  
6  
7

Historic Drawing OI-07: 1925 Plan to convert attic of Keepers Quarters into living space for second assistant



*Historic Drawing OI-08: 1929 revised plans, elevations and details of Fog Signal Building*