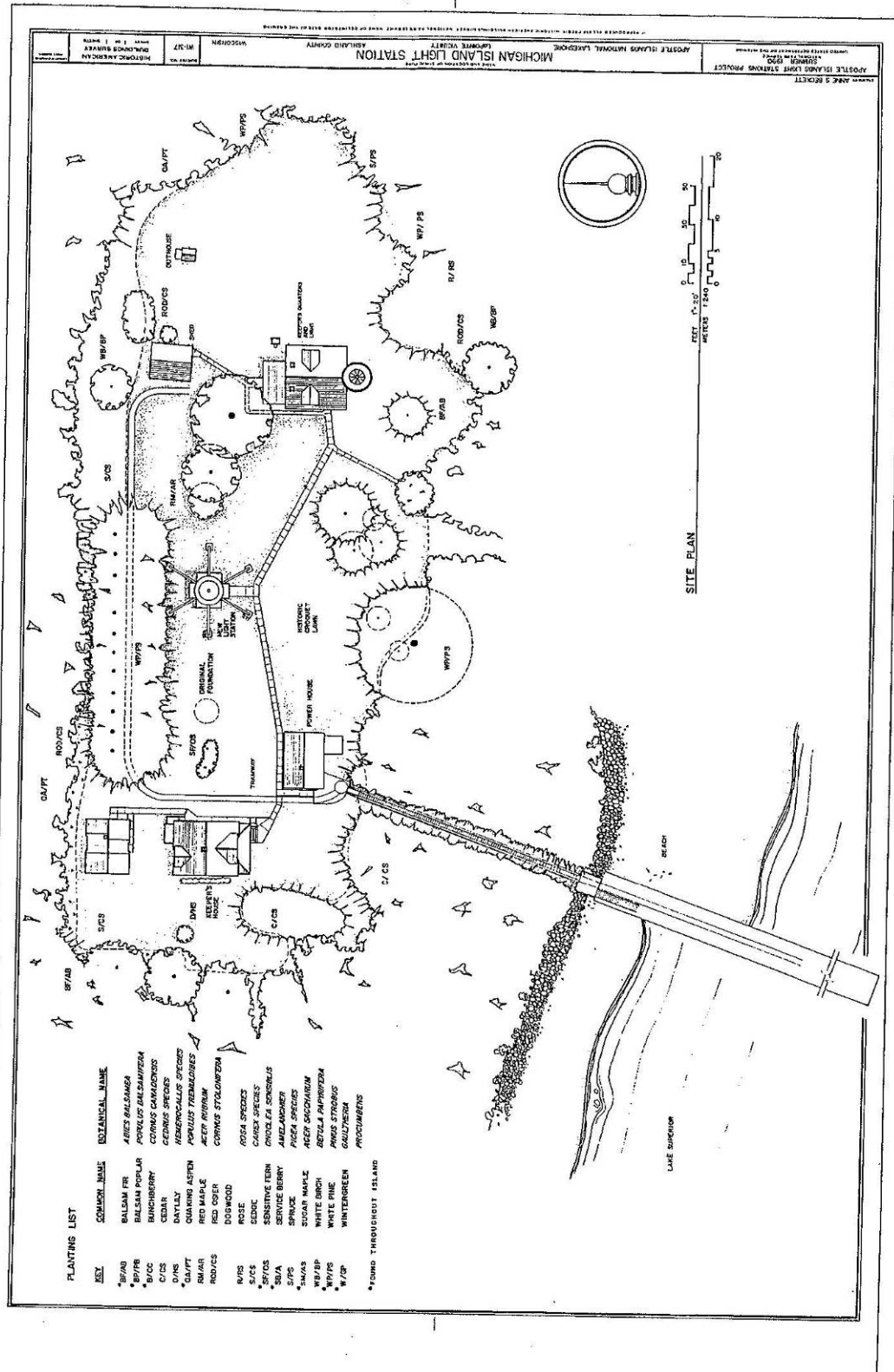
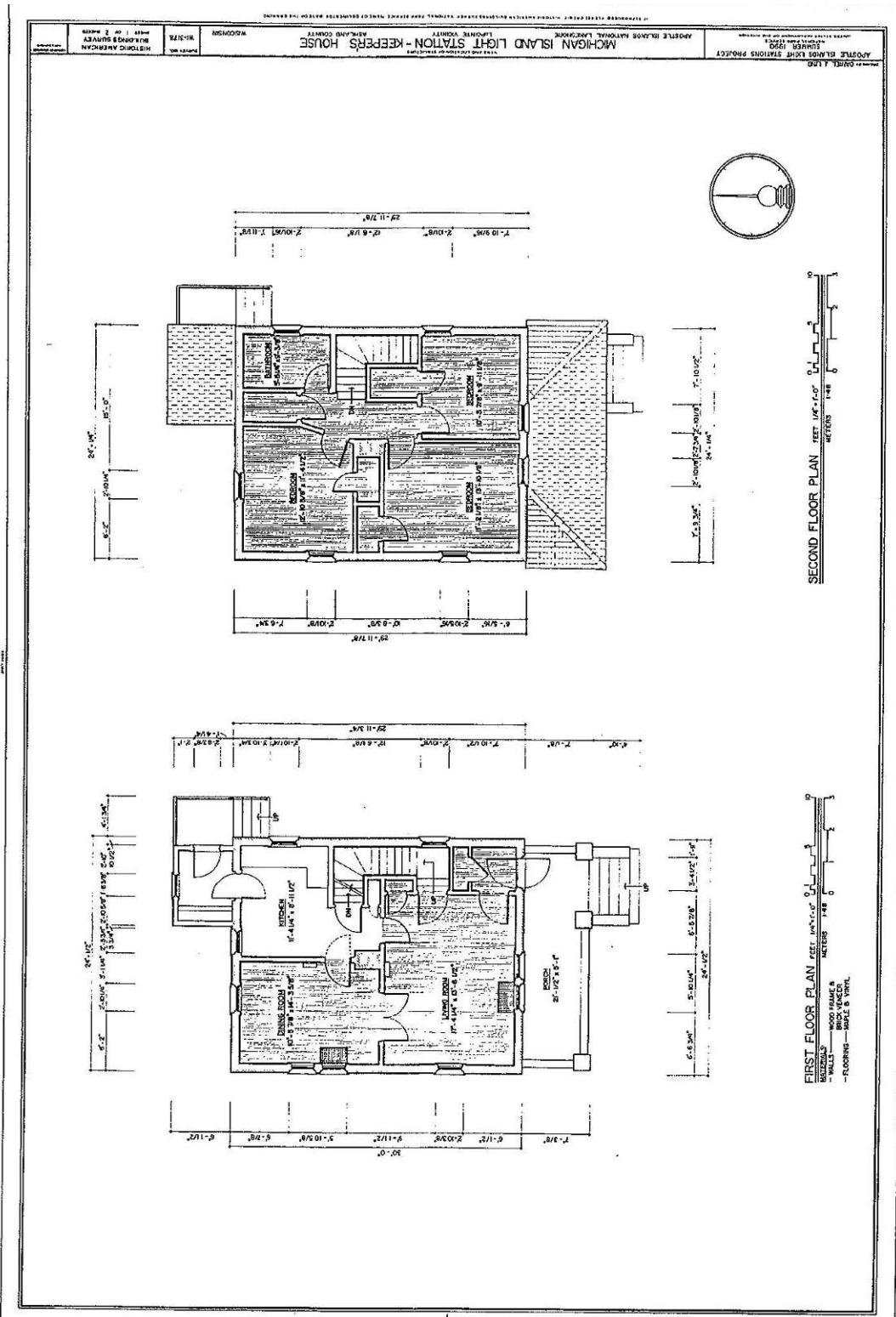


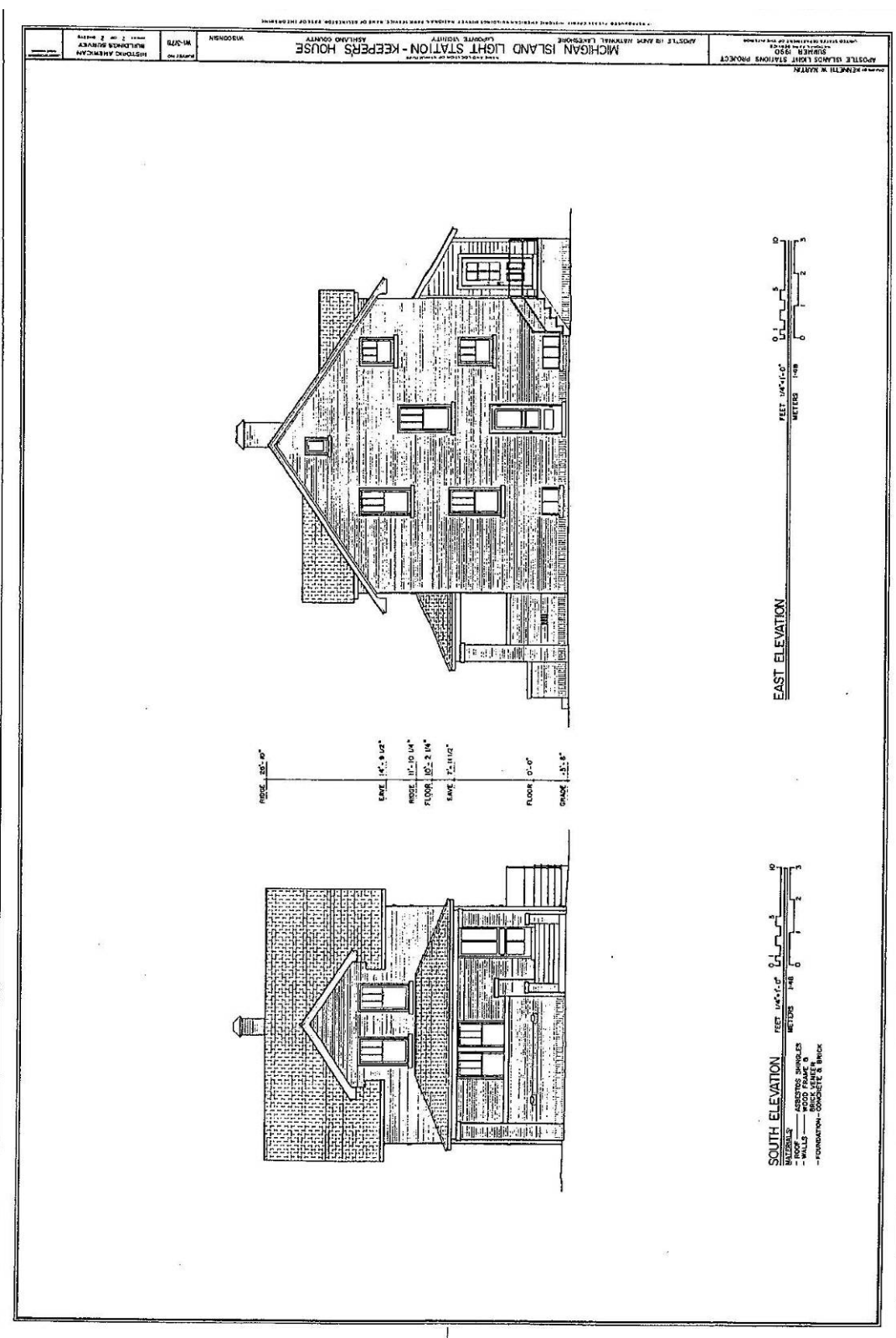
## **EXISTING CONDITION DRAWINGS**

The primary and secondary buildings on Michigan Island were documented in the summer of 1990 by a team from the Historic American Buildings Survey (HABS). Since 1933, multi-format surveys in cooperation with government agencies have recorded the built environment in the United States. Measured drawings, large-format photographs and written histories have defined the survey technique for historic structures. The HABS collection currently contains detailed surveys on more than 38,600 historic structures. The following 10 drawings contain the measured drawings produced by the HABS survey from 1990.

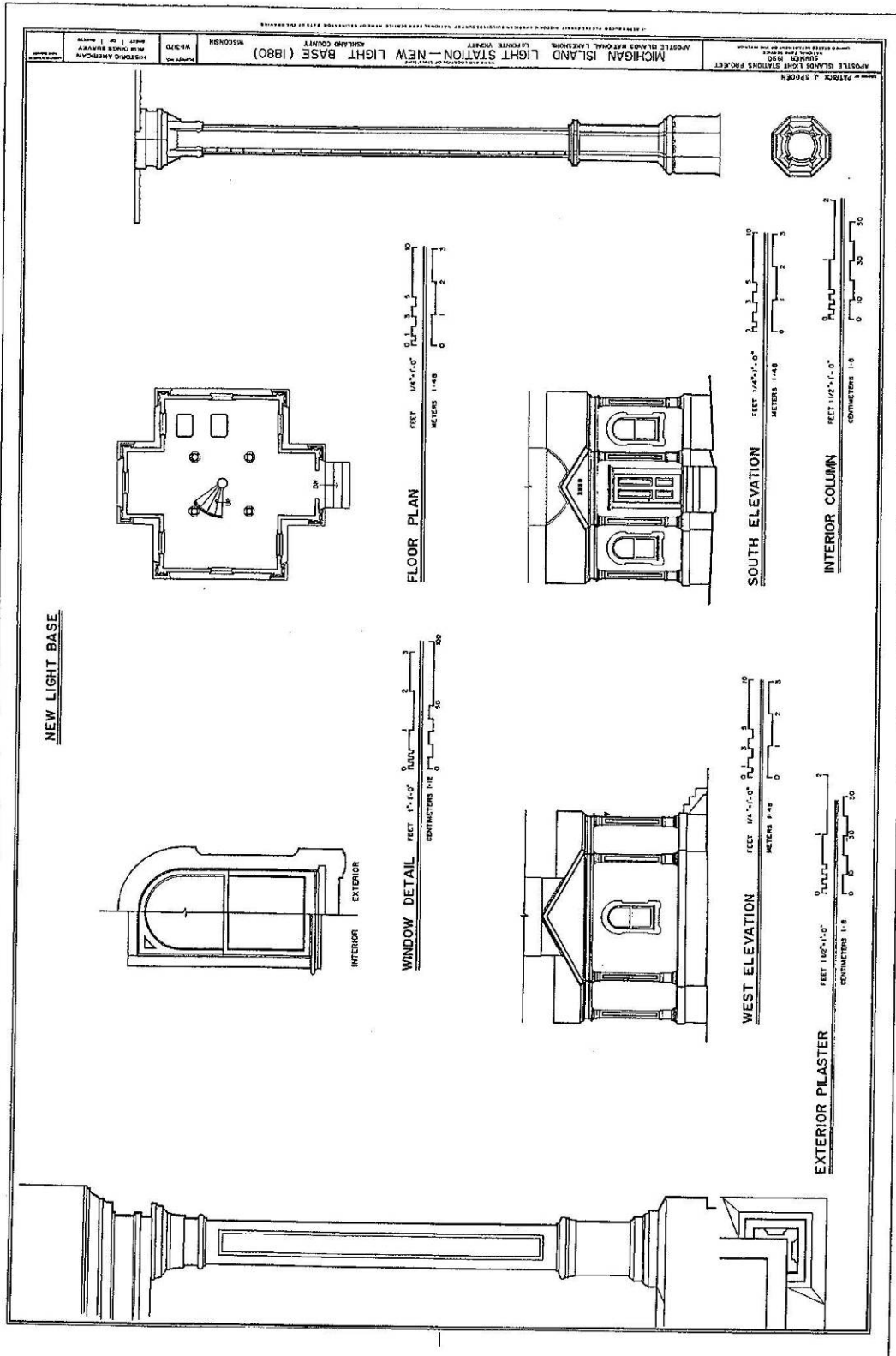
Typically, utilitarian buildings are not included in the HABS survey. In September of 2009, the architects and historic preservation specialists from Andrews & Anderson Architects, PC surveyed the Shed and Privy on Michigan Island. These measured drawings have been included following the HABS drawings.



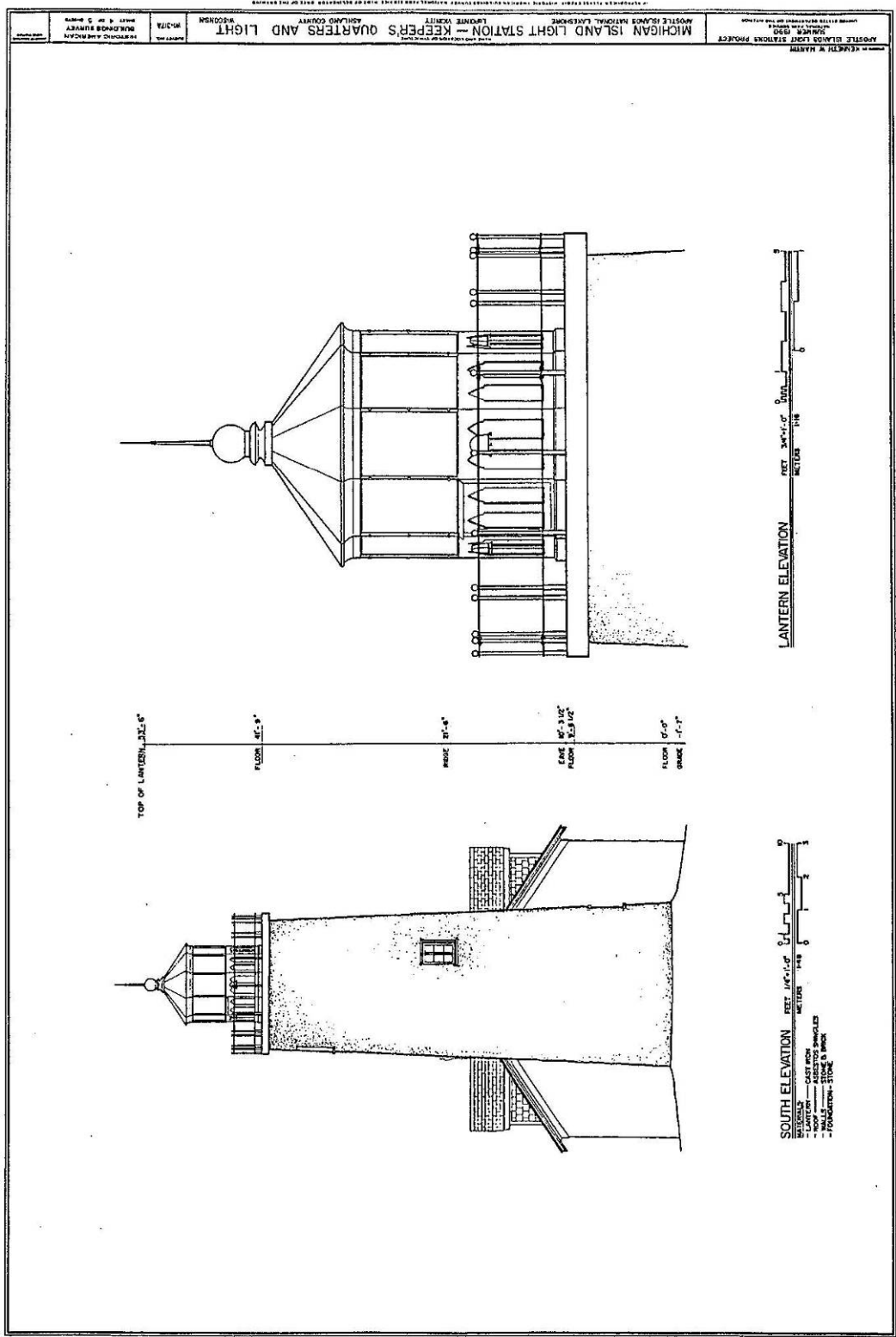


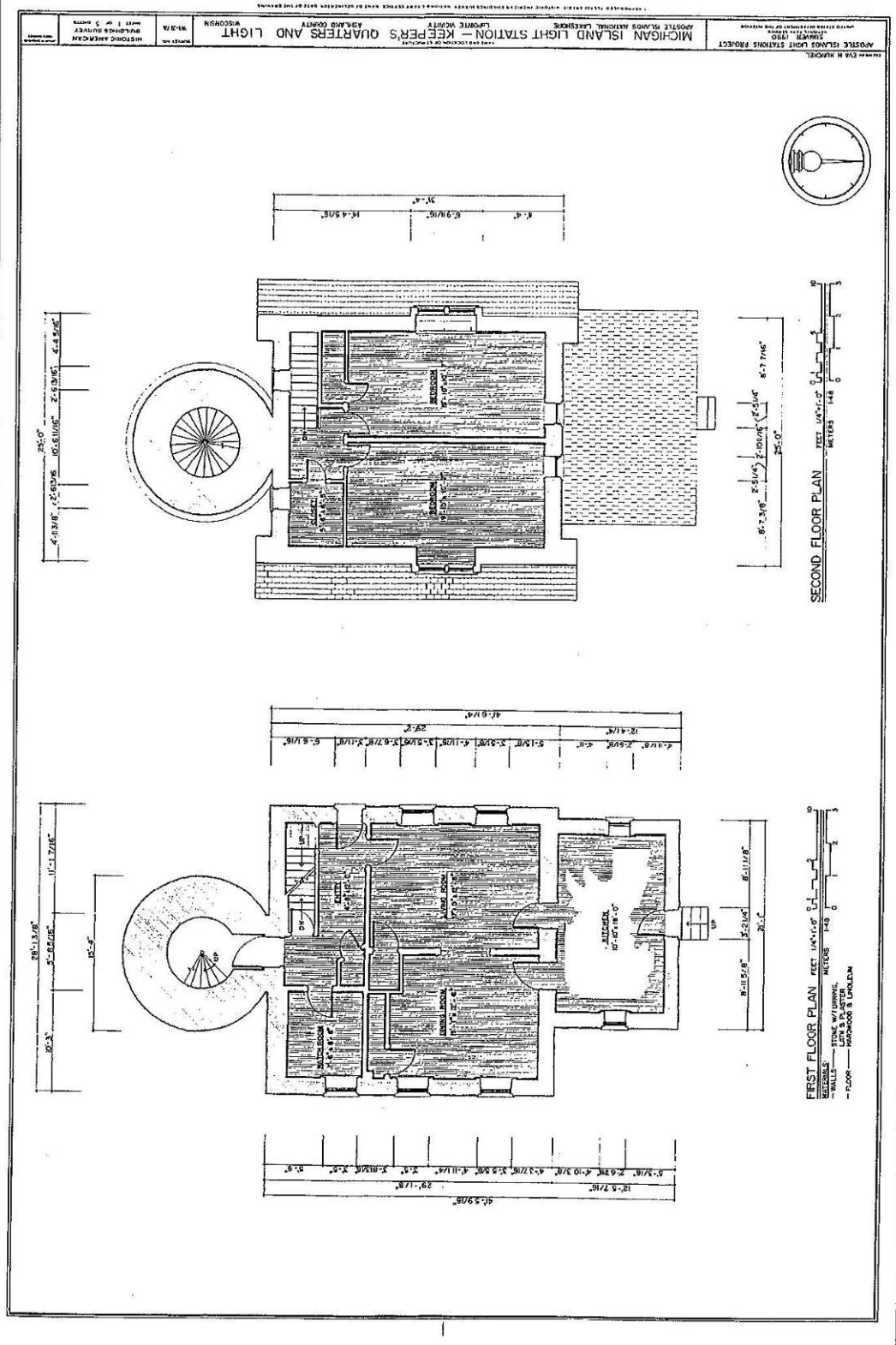


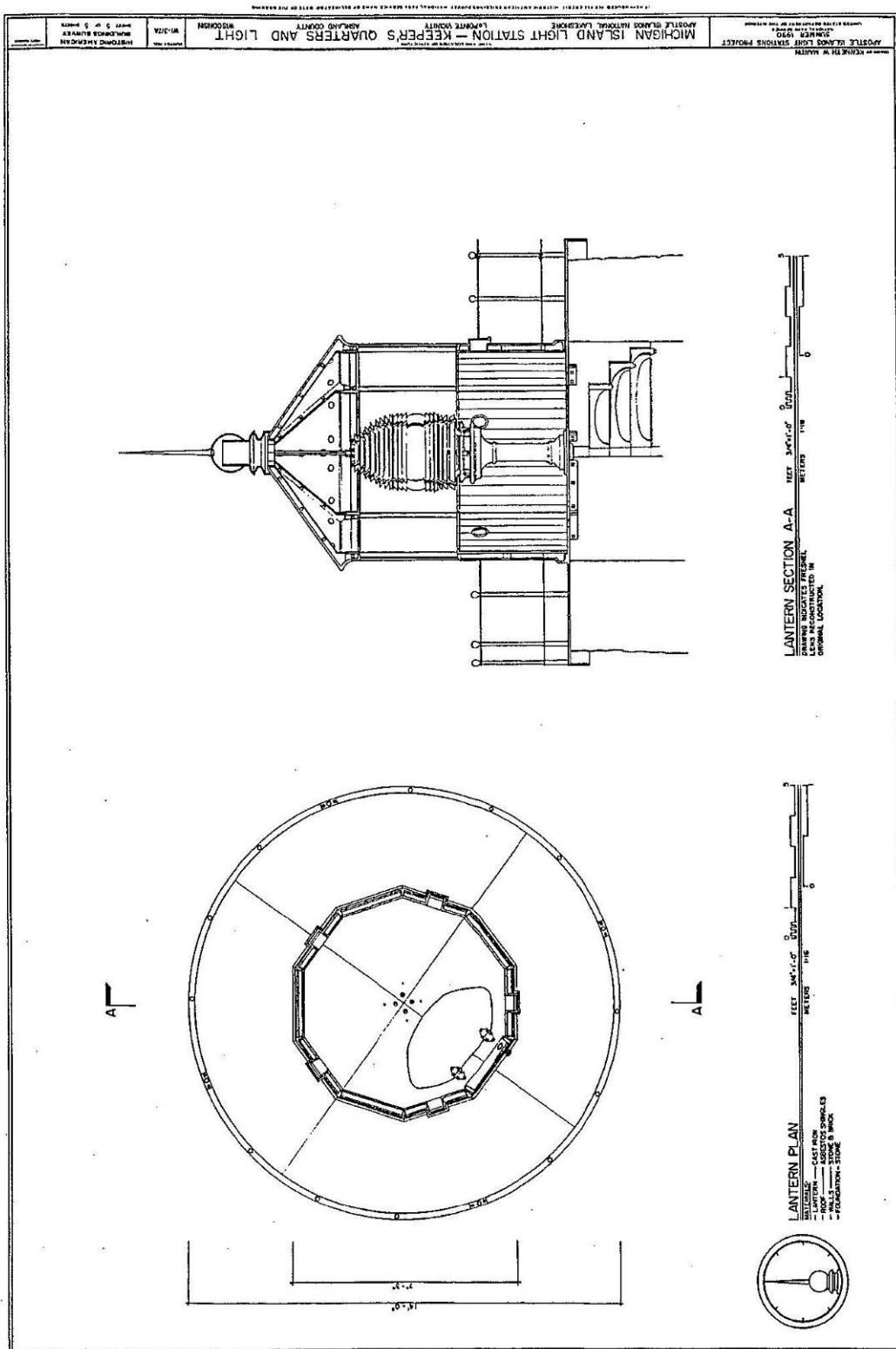


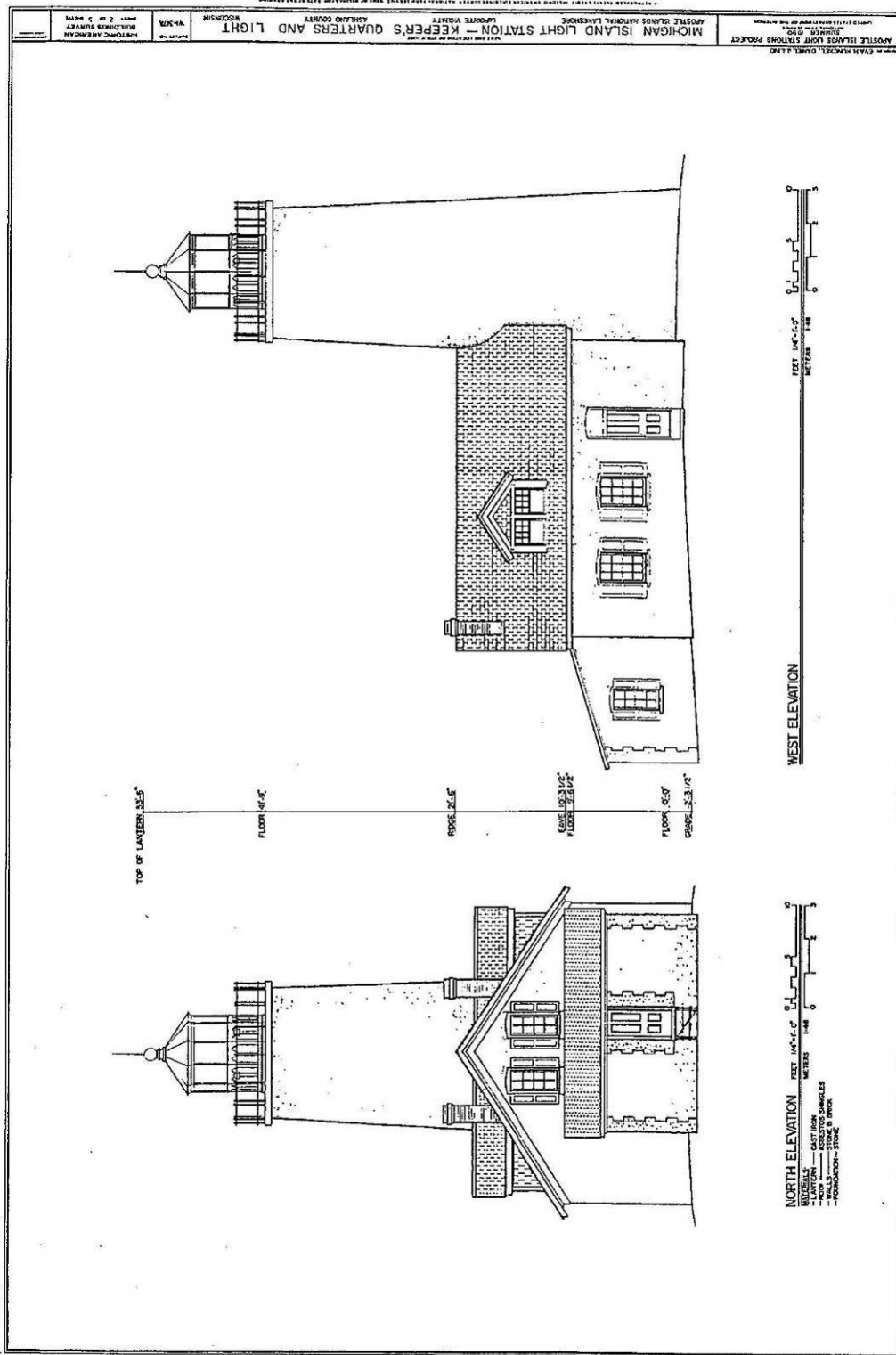


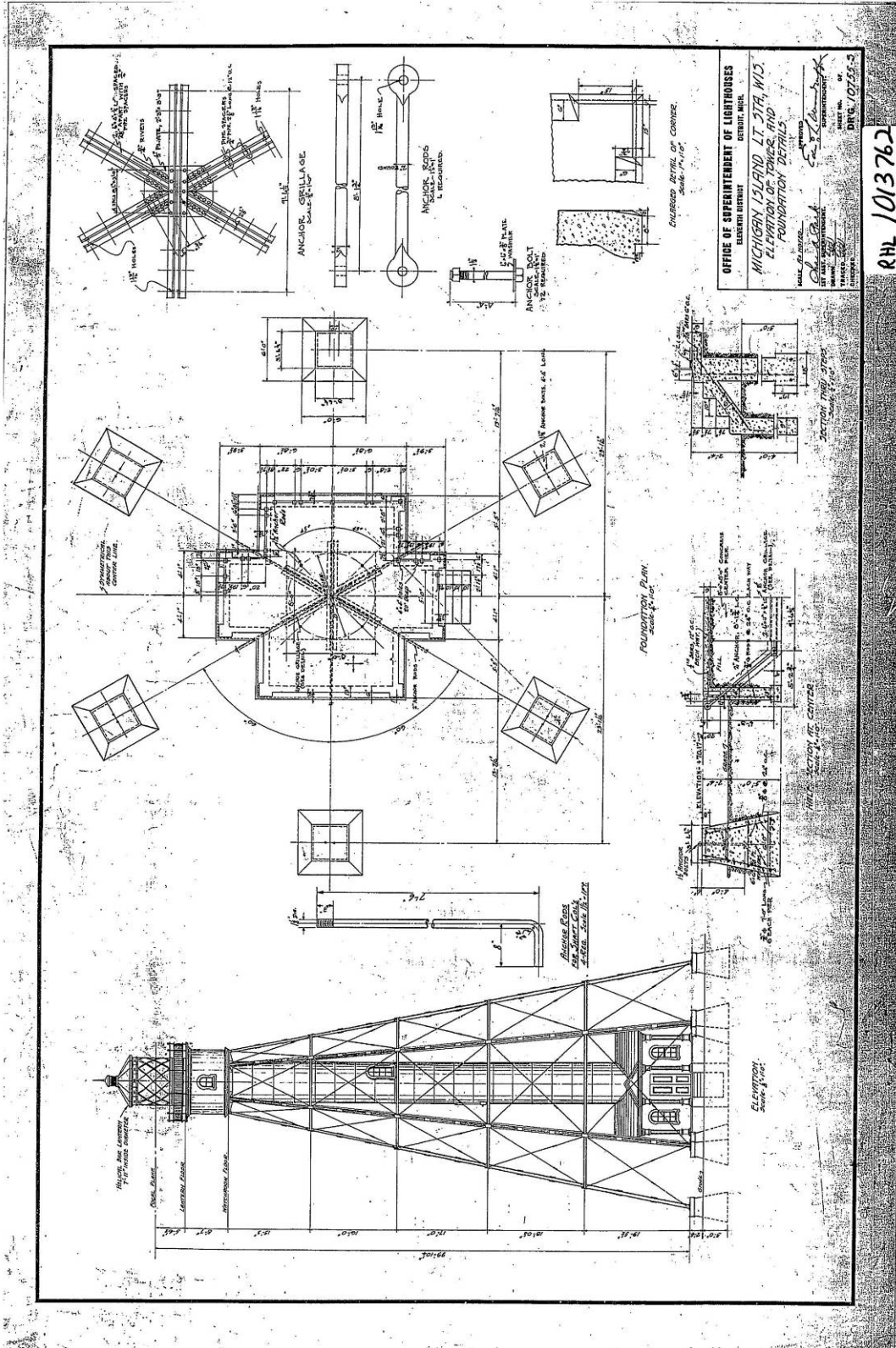




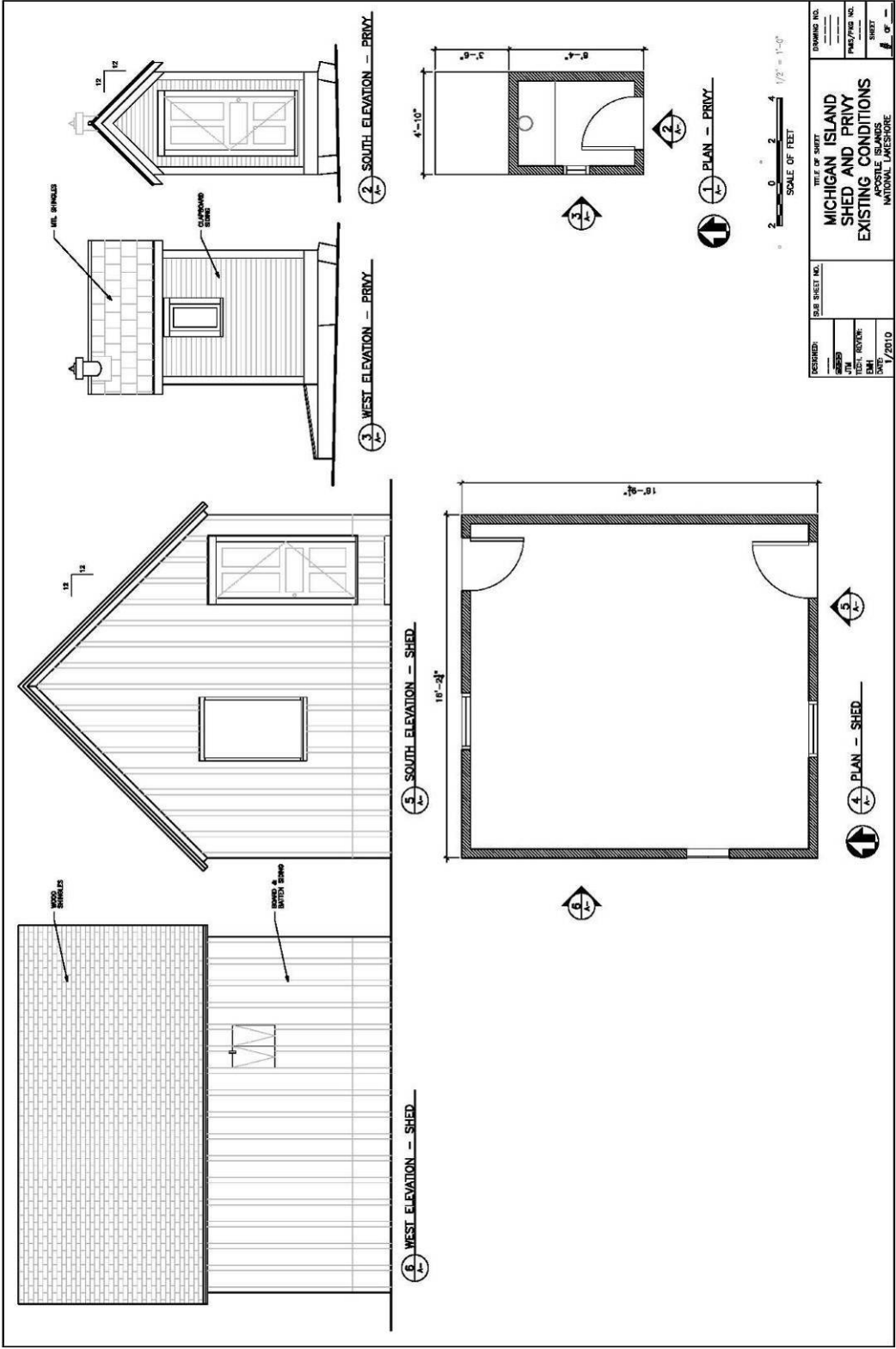












1  
2  
3  
4

1  
2