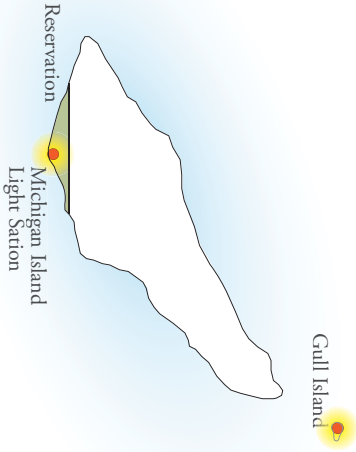


Michigan Island Reservation Preferred Treatment Alternative

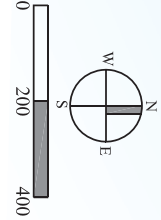
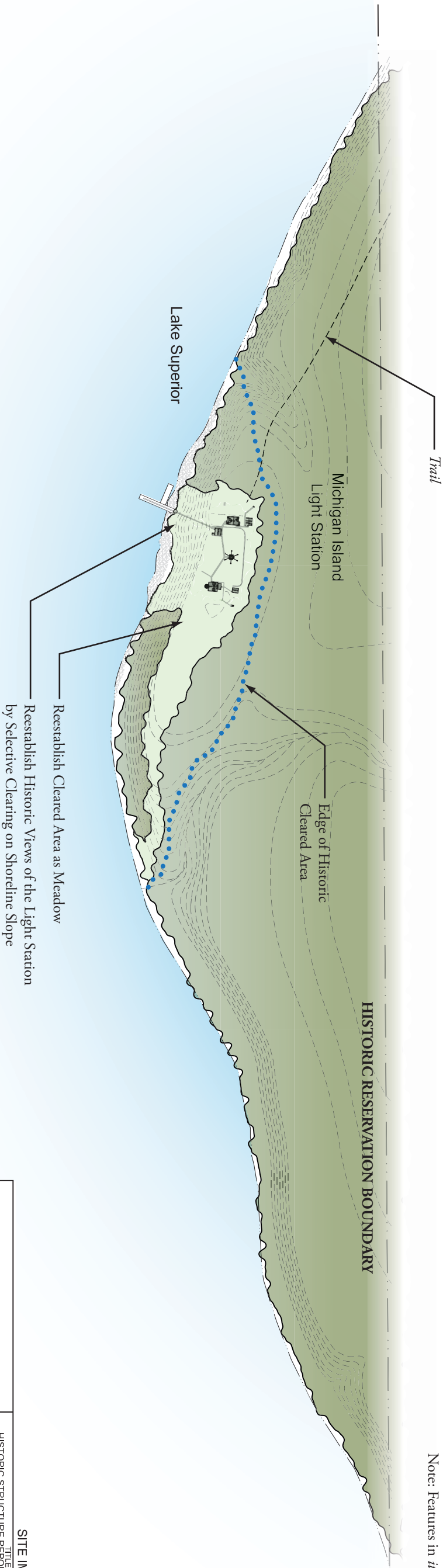
Michigan Island



Legend

- Cleared Area
- Forest
- Edge of Historic
- Historic
- Cleared Area

Note: Features in *indics* are Noncontributing

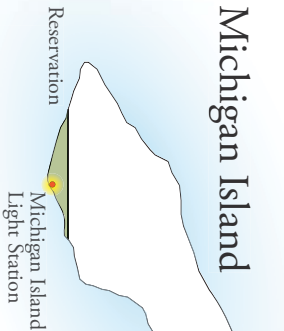


| | | | |
|---|--|---|--------------------|
| UNITED STATES DEPARTMENT OF THE INTERIOR APOSTLE ISLANDS NATIONAL LAKESHORE | | TITLE OF PROJECT PROJECT APPEAL LANDSCAPE REPORT & ENVIRONMENTAL ASSESSMENT TREATMENT ALTERNATIVES | |
| 100% 3/8/11 | MICHIGAN ISLAND - RESERVATION BOUNDARY | NAME OF PARK APOSTLE ISLANDS NATIONAL LAKESHORE | STATE WISCONSIN |
| | REGION MIDWEST | COUNTY ASHLAND | |

Michigan Island

Preferred Treatment Alternative

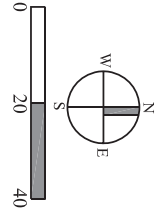
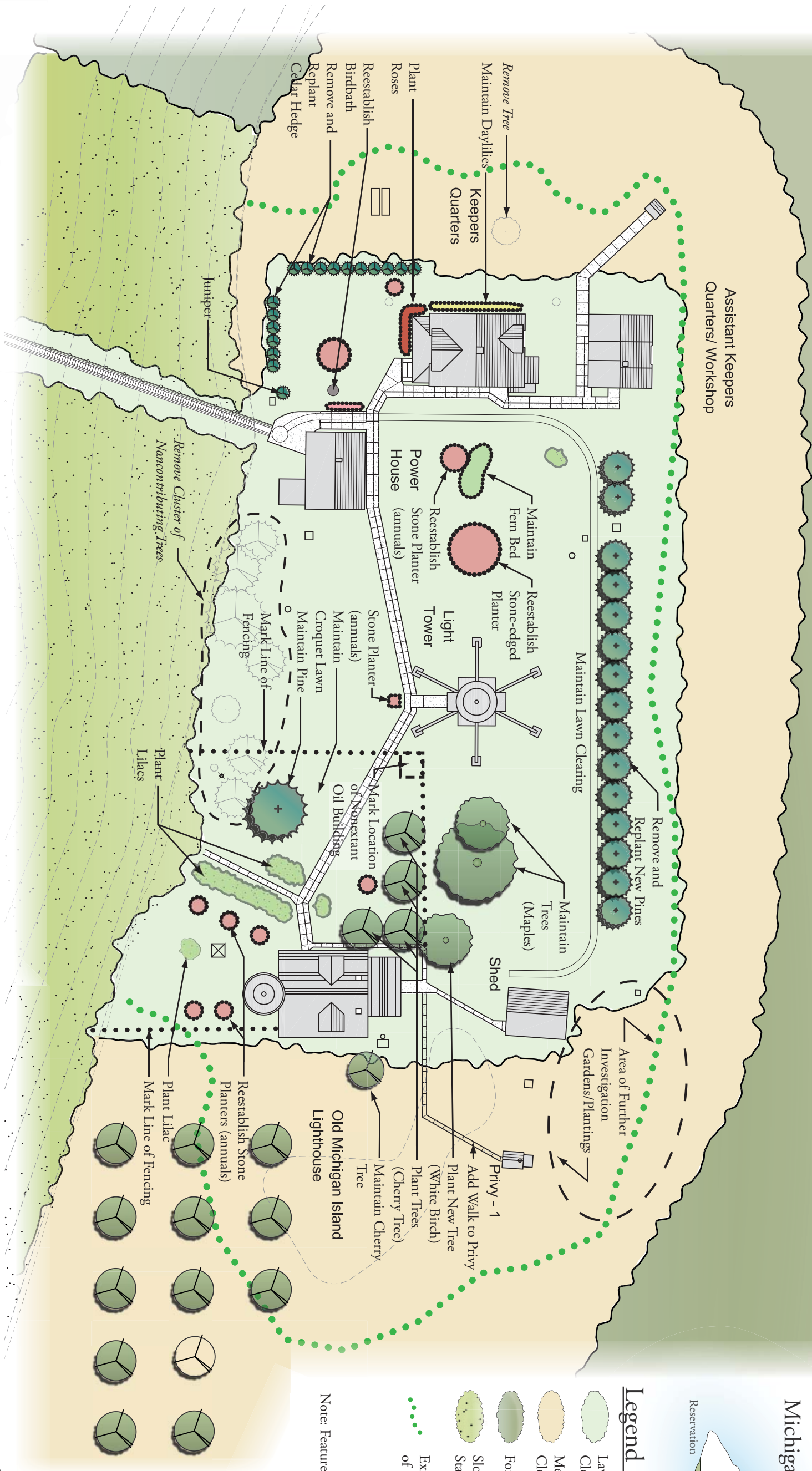
Landscape Features



Legend

- | | |
|-------------------------|--|
| Lawn | Deciduous Tree |
| Clearing | Fruit Tree |
| Meadow | Pine Tree |
| Clearing | |
| Forest | |
| Slope Stabilization | Cedar |
| Existing Edge of Forest | Domestic Plantings - Perennials/Annals |
| | Lilac Bush |

Note: Features in *italics* are Noncontributing



| | | | |
|---|-------------------|---|--|
| UNITED STATES DEPARTMENT OF THE INTERIOR APOSTLE ISLANDS NATIONAL LAKESHORE | | TITLE OF PROJECT HISTORIC STRUCTURE REPORT & ENVIRONMENTAL ASSESSMENT TREATMENT ALTERNATIVES | |
| MICHIGAN ISLAND LIGHT STATION | | NAME OF PARK APOSTLE ISLANDS NATIONAL LAKESHORE | |
| REGION MIDWEST | COUNTY ASHLAND | STATE WISCONSIN | |

SITE IMAGE MI-88