

Figure B12
SST's Proposed Route for Burying
Fiber Optic Cable on the Teton
Pass Segment of the WLCP.

Legend

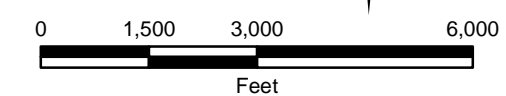
- Proposed Teton Pass Fiber Optic Line
- Proposed Togwotee Pass Fiber Optic Line
- Community Anchor Institution
- Existing Fiber Optic Hut Location
- Proposed Fiber Optic Hut Location
- Proposed Cabinet Location
- Proposed Staging Areas (Materials / Equipment)
- Milepost
- Town of Jackson
- Grand Teton National Park
- Bridger-Teton National Forest
- Caribou-Targhee National Forest
- Shoshone National Forest
- Teton Wilderness
- National Elk Refuge

Wild & Scenic River Class


- Scenic
- Wild

Proposed Wetland / Water Crossing Method

- Attach to Existing Bridge
- Bore
- Plow



NOTE:
NORTH } Label denotes the general
SOUTH } side of road the fiber optic
EAST } cable would be installed on.
WEST }


27 January 2011

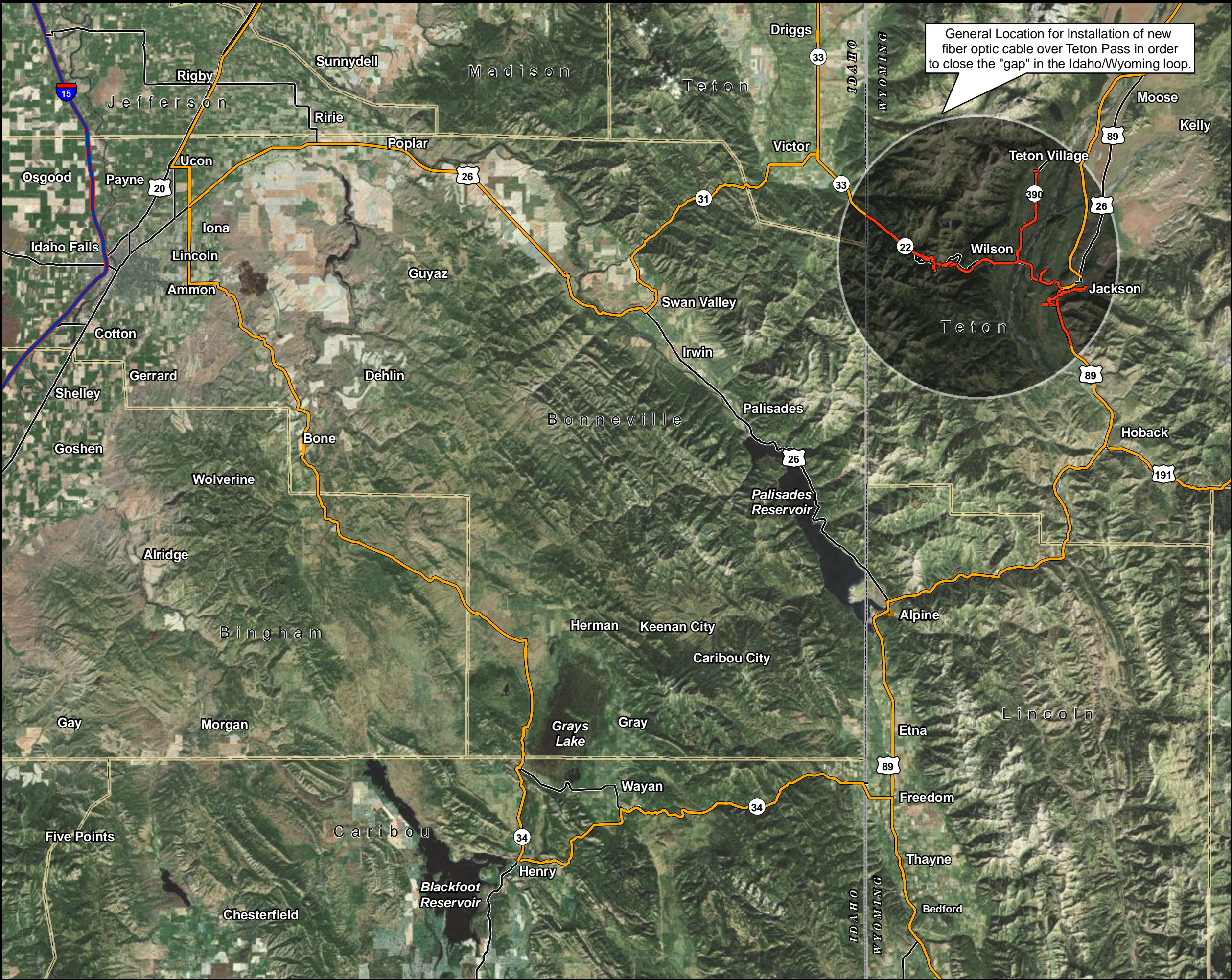


Figure B13
Location of SST's Proposed Idaho/Wyoming "Gap" Closure by the Teton Pass Segment of the WLCP.

- Legend**
- Proposed Teton Pass Fiber Optic Line
 - Existing Fiber Facilities
 - Interstate
 - Roadways
 - County Boundary

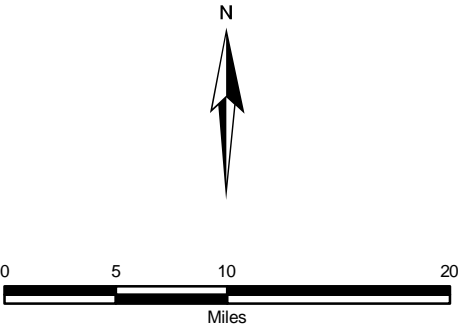








Figure B14

Location of SST's Proposed Wyoming "Gap" Closure by the Togwotee Pass Segment of the WLCP.

Legend

-  Proposed Togwotee Pass Fiber Optic Line
-  Existing Fiber Facilities
-  Interstate
-  Roadways
-  Togwotee_Gap_Closure_Area
-  County Boundary

General Location for the installation of a new fiber optic cable over Togwotee Pass in order to close the "gap in the Wyoming loop."

