

Figure B8
SST's Proposed Route for Burying
Fiber Optic Cable on the Togwotee
Pass Segment of the WLCP.

Legend

- Proposed Teton Pass Fiber Optic Line
- Proposed Togwotee Pass Fiber Optic Line
- Community Anchor Institution
- Existing Fiber Optic Hut Location
- Proposed Fiber Optic Hut Location
- Proposed Cabinet Location
- Proposed Staging Areas (Materials / Equipment)
- Milepost
- Town of Jackson
- Grand Teton National Park
- Bridger-Teton National Forest
- Caribou-Targhee National Forest
- Shoshone National Forest
- Teton Wilderness
- National Elk Refuge

Wild & Scenic River Class

- Scenic
- Wild

Proposed Wetland / Water Crossing Method

- Attach to Existing Bridge
- Bore
- Plow

0 1,500 3,000 6,000
 Feet

NOTE:
 NORTH } Label denotes the general
 SOUTH } side of road the fiber optic
 EAST } cable would be installed on.
 WEST }

PIONEER
 ENVIRONMENTAL SCIENCE, INC.
 27 January 2011

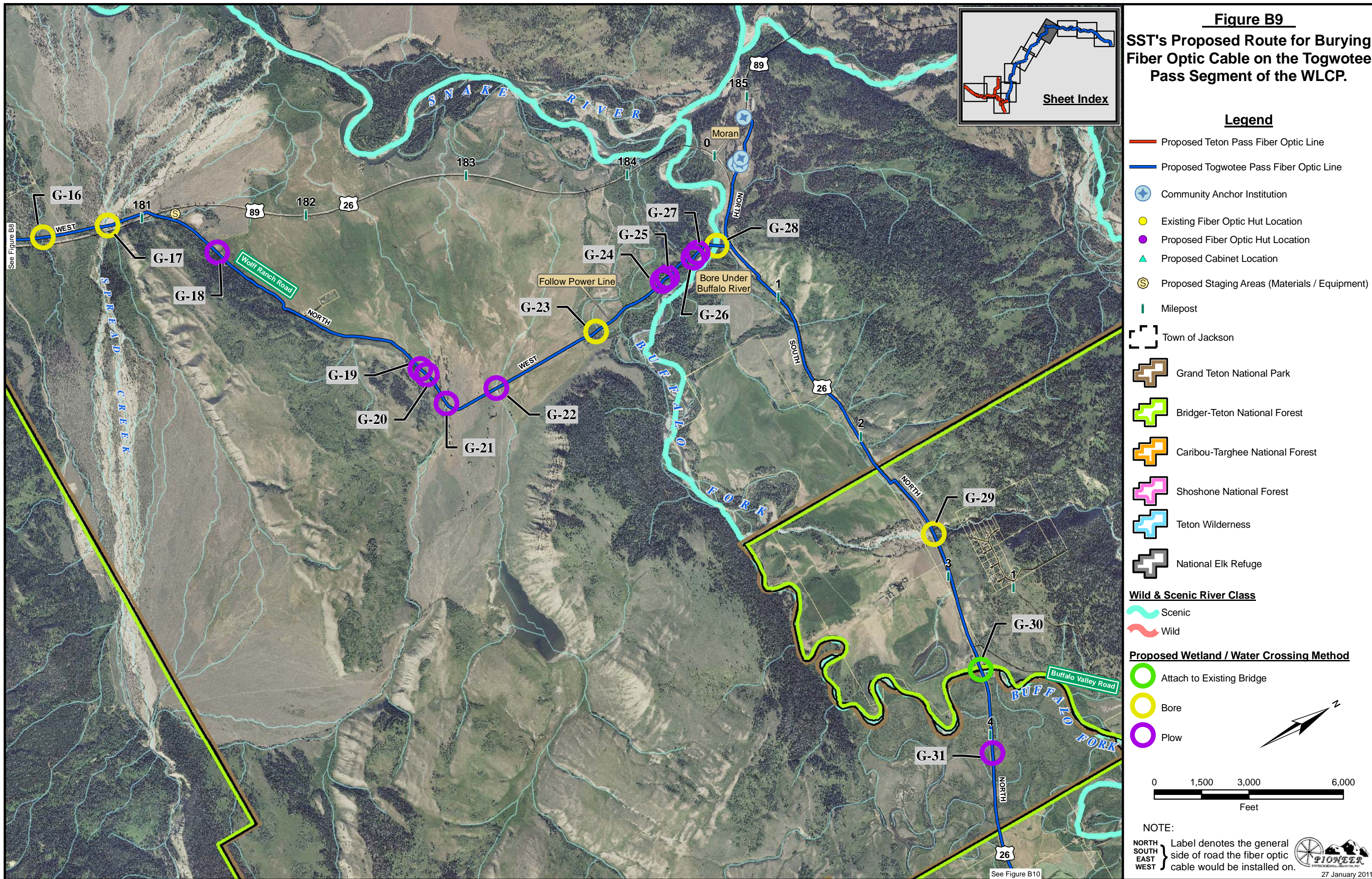
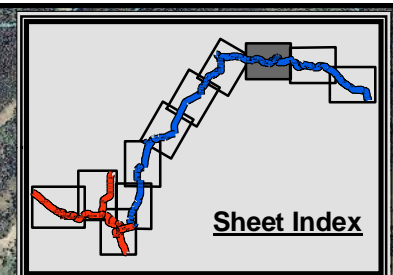
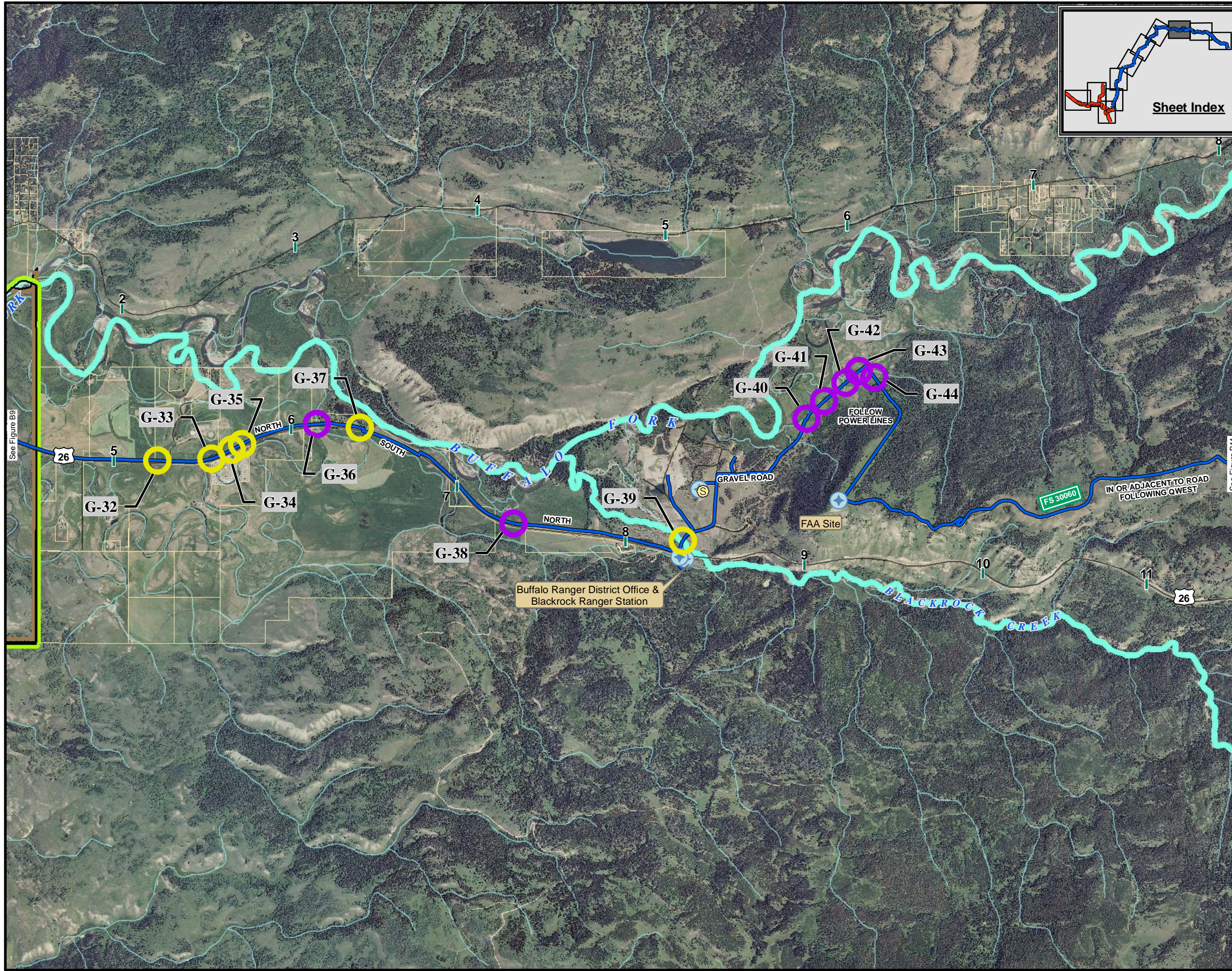
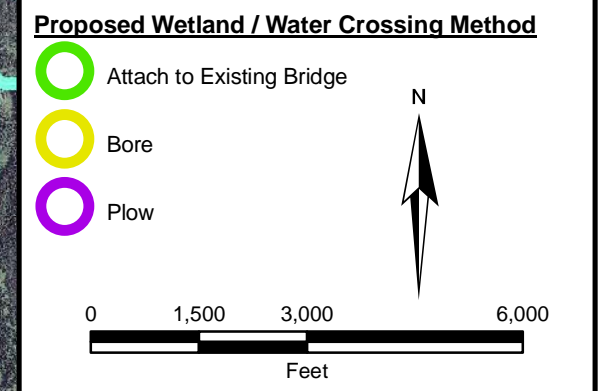


Figure B10
SST's Proposed Route for Burying Fiber Optic Cable on the Togwotee Pass Segment of the WLCP.



Legend

- Proposed Teton Pass Fiber Optic Line
- Proposed Togwotee Pass Fiber Optic Line
- Community Anchor Institution
- Existing Fiber Optic Hut Location
- Proposed Fiber Optic Hut Location
- Proposed Cabinet Location
- Proposed Staging Areas (Materials / Equipment)
- Milepost
- Town of Jackson
- Grand Teton National Park
- Bridger-Teton National Forest
- Caribou-Targhee National Forest
- Shoshone National Forest
- Teton Wilderness
- National Elk Refuge
- Wild & Scenic River Class**
 - Scenic
 - Wild
- Proposed Wetland / Water Crossing Method**
 - Attach to Existing Bridge
 - Bore
 - Plow



NOTE:
 NORTH
 SOUTH } Label denotes the general
 EAST side of road the fiber optic
 WEST cable would be installed on.

PIONEER
 ENVIRONMENTAL SCIENCE, INC.
 27 January 2011

