

Development of Treatment Concepts

Washington & Barnum Islands
Cultural Landscape Report & Environmental Assessment



QUINN EVANS
ARCHITECTS

Internal Planning Workshop ~ February 16, 2011

Management Issues

1. Address landscape management needs—preserve historic integrity and accommodate future use.
2. Address planning and compliance needs.
3. Consider budget constraints.
4. Identify opportunities for interpreting historic fishing, resort, recreational and native American use.
5. Enhance visitor experiences by providing information about the history of the sites.
6. Identify potential day use and educational activities.
7. Evaluate the possibility of establishing an interpretive or research facility within the project area.
8. Based on the GMP, explore the feasibility of establishing a camp site in the project area.
9. Other Management Issues?

Washington & Barnum Islands

Cultural Landscape Report & Environmental Assessment



Historic Landscape Management Philosophies
Recognized by the Secretary of the Interior

Restoration
Preservation
Rehabilitation
Reconstruction

Washington & Barnum Islands
Cultural Landscape Report & Environmental Assessment



QUINN EVANS
ARCHITECTS

Internal Planning Workshop ~ February 16, 2011

Preliminary Treatment Concept Ideas

Restoration

- Restoration of portions of the landscape to specific historic periods based on the integrity of the landscape characteristics.
- Examples:
 - Restoration of the area around Johns Hotel to reflect turn of the century conditions.
 - Restoration of the Sivertson Fishery area to reflect conditions ca. 1920s-1930s.



Preliminary Treatment Concept Ideas

Rehabilitation

- More ideas, presented next, include descriptions as examples of the types of recommendations that can be included in the treatment concepts.
- Each has a brief statement that provides a framework for the recommendations, however the individual recommendations can be altered and mixed to ultimately develop a complete treatment concept.
- These examples are to be seen as a starting point—input from today's meeting and from the on-line review will be used to develop the treatment alternatives.



Preliminary Treatment Concept 1: Current Management (Preservation & Adaptive Re-use)

- Continue current management
- This alternative provides a baseline for evaluating changes and related environmental effects of the other alternatives.
- Preserve extant historic landscape features within the project area through seasonal maintenance:
 - extant buildings, fish net reels, docks, vegetation, views and small scale features.
- Adaptively re-use several buildings mainly for housing of caretakers and volunteers.
- Decisions about maintenance are determined and approved by NPS management on a case by case basis. No coordinated landscape maintenance plan is in place.
- Compliance is conducted on a case by case basis.
- Visitor access is permitted, but not accommodated by facilities, information, interpretation, or transportation options, other than those provided by the caretakers and volunteers.



Preliminary Treatment Concept 1: Current Management (Preservation & Adaptive Re-use)

Barnum Island

ISLE ROYALE NATIONAL PARK
Cultural Landscape Report & Environmental Assessment

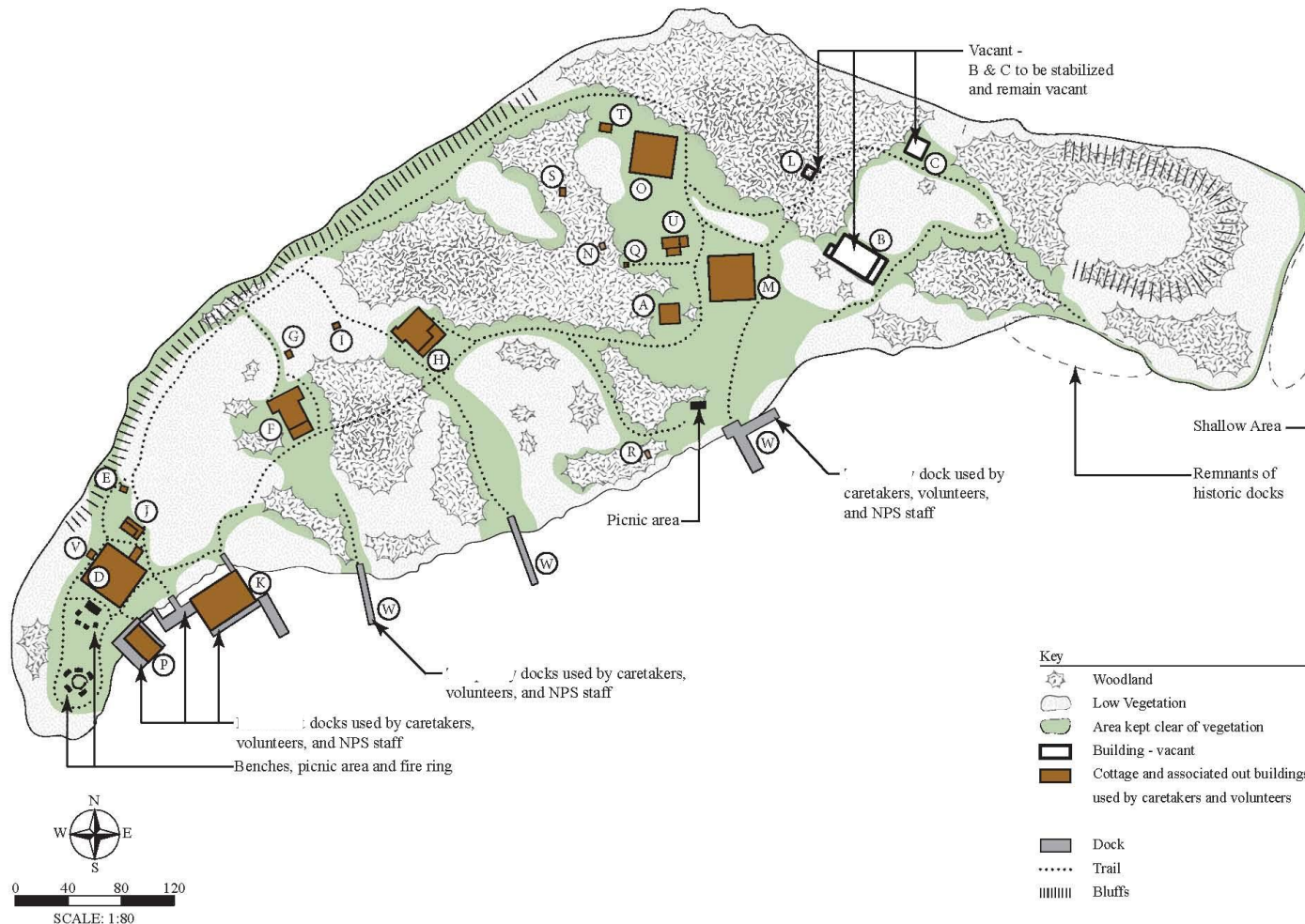
Treatment Alternative #1

Legend

- (A) Andrews Small Log Cabin, 1890 (HS 345)
- (B) Johns Large Log House, 1890 (HS 351)
- (C) Johns Log Cabin, 1892 (HS 343)
- (D) Barnum Residence, ca. 1902 (HS 344)
- (E) Privy, ca. 1920s (HS 344A)
- (F) Dunwoodie House, 1905 (HS 350)
- (G) Privy, ca. 1920s (HS 350A)
- (H) Barnum/Ray Cottage, 1905 (HS 354)
- (I) Privy, ca. 1920s (HS 354A)
- (J) Barnum Wood Shed, 1905 (HS 355)
- (K) Barnum Large Boathouse, 1910 (HS 348)
- (L) Double Privy, 1920 (HS 351A)
- (M) E. Andrews Cottage, 1920 (HS 352)
- (N) Andrews Wood Shed, 1920, Ruins
- (O) F. Andrews Cottage, 1920 (HS 353)
- (P) Barnum Small Boathouse, 1933 (HS 349)
- (Q) Privy, ca. 1990s
- (R) Pumphouse, ca. 2000s
- (S) Privy, ca. 1990s
- (T) Wood Shed, ca. 1990s
- (U) Wood Shed, ca. 1990s
- (V) Generator Box, ca. 1990s
- (W) Temporary Docks

Map Notes and Sources

Appraisal/Building Records, April 1953.
Aerial Photography, 2009, NPS.
CLI Field Map, June 2000, by Roberta Young.
Site Investigations, June 2010, by Brenda Williams, Mallory Scholl, and Lucas Westcott.
Interviews with Betty Strom, Todd Strom, Tony Strom, and Sandy Debolt, conducted by Brenda Williams, 2010.



Preliminary Treatment Concept 1: Current Management (Preservation & Adaptive Re-use)

Washington Island

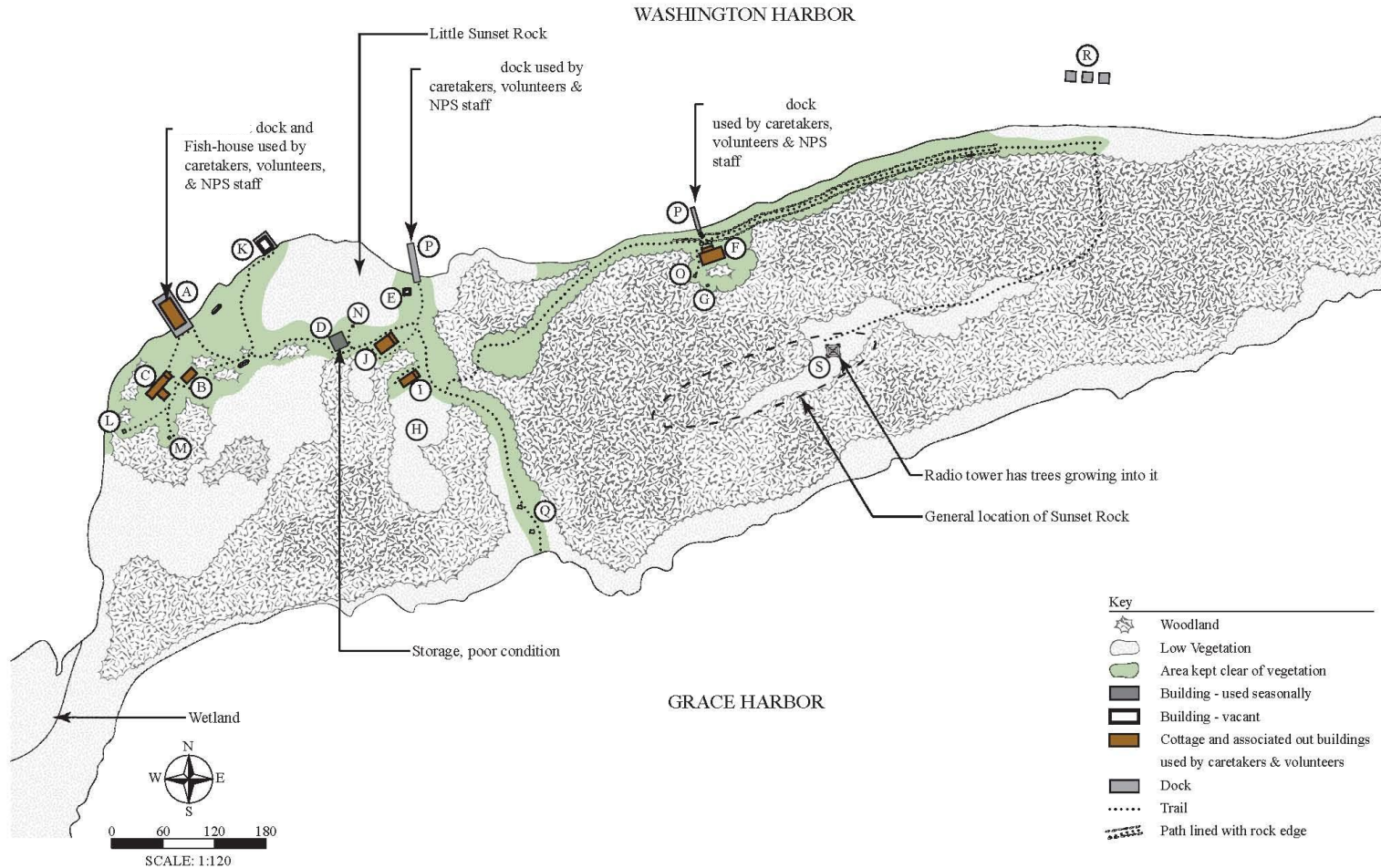
ISLE ROYALE NATIONAL PARK

Cultural Landscape Report & Environmental Assessment

Treatment Alternative #1

Legend

- (A) Sivertson Fish House, 1906 (HS 198)
- (B) Sivertson Net House, 1906 (HS 199)
- (C) Sivertson Residence, 1906 (HS 200)
- (D) Carl Eckmark Net House, 1906 (HS 195)
- (E) Sivertson Laundry, 1906 (HS 194)
- (F) J. Skadberg Residence/Cabin A, 1906 (HS 186)
- (G) Privy, ca. 1920s (HS 186A)
- (H) Privy, 1920 (HS 192A)
- (I) Honeymoon Cottage, 1920 (HS 192)
- (J) A. Sivertson Residence, 1920 (HS 193)
- (K) Eckel Fish House, 1920 (HS 197)
- (L) Privy, 1920 (HS 200A)
- (M) Privy, ca. 1990s
- (N) Privy, ca. 1990 (HS 195A)
- (O) Privy, ca. 1990
- (P) Temporary Docks
- (Q) Former site of South Cottage
- (R) Singer Maintenance Docks, remnants of cribbing
- (S) Radio Tower, 1910 (HS 186C)



Map Notes and Sources

Appraisal/Building Records, April 1953.
Aerial Photography, 2009, NPS.
CLI Field Map, June 2000, by Roberta Young.
Interviews with Betty Strom, Todd Strom, Sandy Debolt, and Tony Strom by Brenda Williams, 2010.
Site Investigations, June 2010, by Brenda Williams, Mallory Scholl and Lucas Westcott.



QUINN EVANS
ARCHITECTS

Cultural Landscape Report & Environmental Assessment

Internal Planning Workshop ~ February 16, 2011



QUINN EVANS
ARCHITECTS

Preliminary Treatment Concept 2: Preservation with increased Visitor Opportunities

- Preserve and adaptively re-use extant historic buildings;
- Increase visitor opportunities;
- Develop a *landscape maintenance plan* to guide seasonal maintenance aimed at preserving the extant historic landscape features, including: buildings, fish net reels, docks, vegetation, views and small scale features;
- Provide *educational wayside exhibits* at selected sites on Washington and Barnum Islands;
- Provide *dock space* for visitors at both Washington and Barnum Islands. Transportation between the islands would be via private boat—brought by visitors;
- Provide public transportation to Washington Island via a concessionaire boat;
- Provide regularly scheduled interpretive tours of the two islands including transportation from Windigo and between the two islands;
- Consider providing one accessible dock at each island and an accessible route connection from the dock to a day use area and a privy.

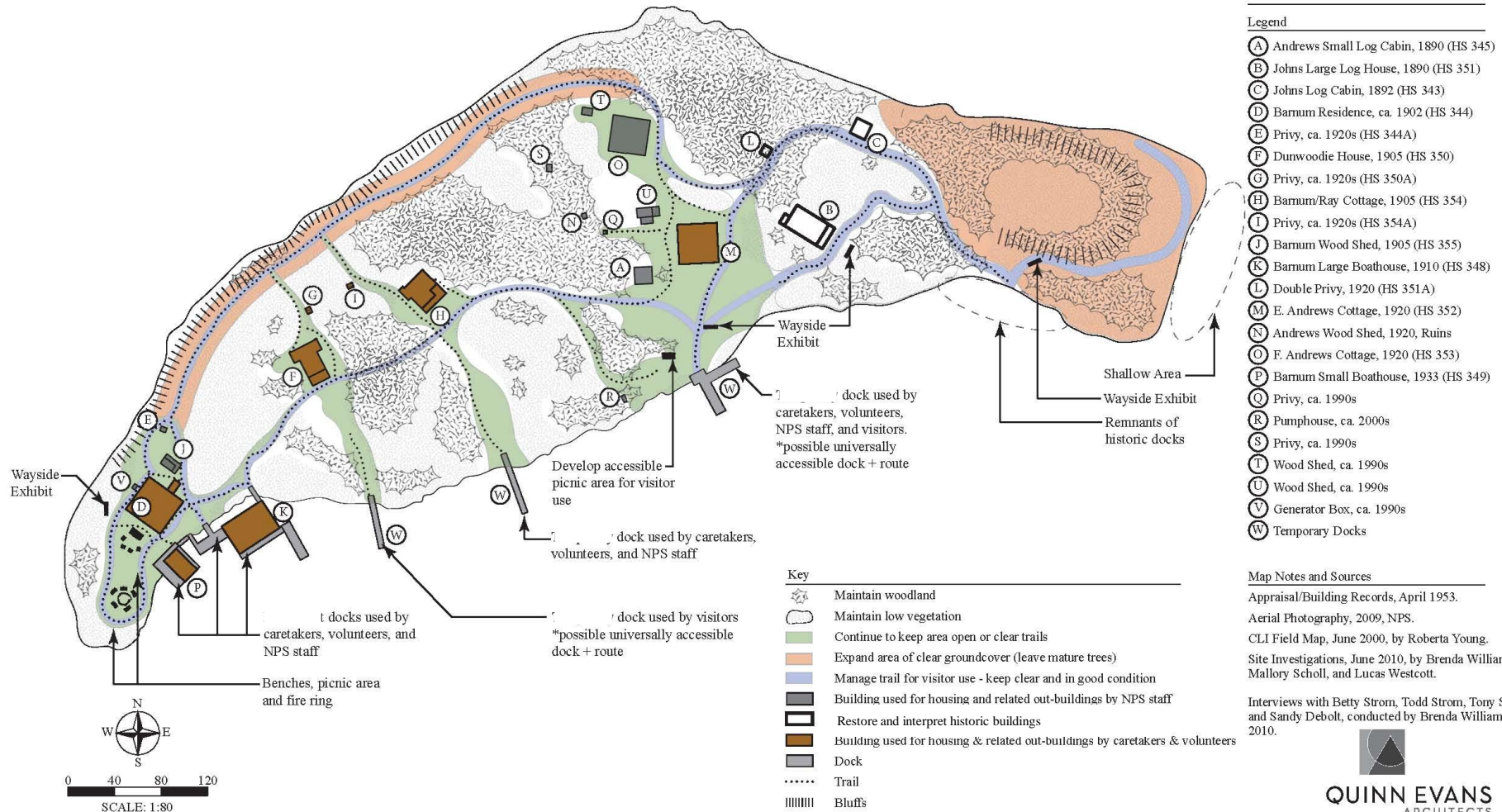


Preliminary Treatment Concept 2: Preservation with increased Visitor Opportunities

Barnum Island

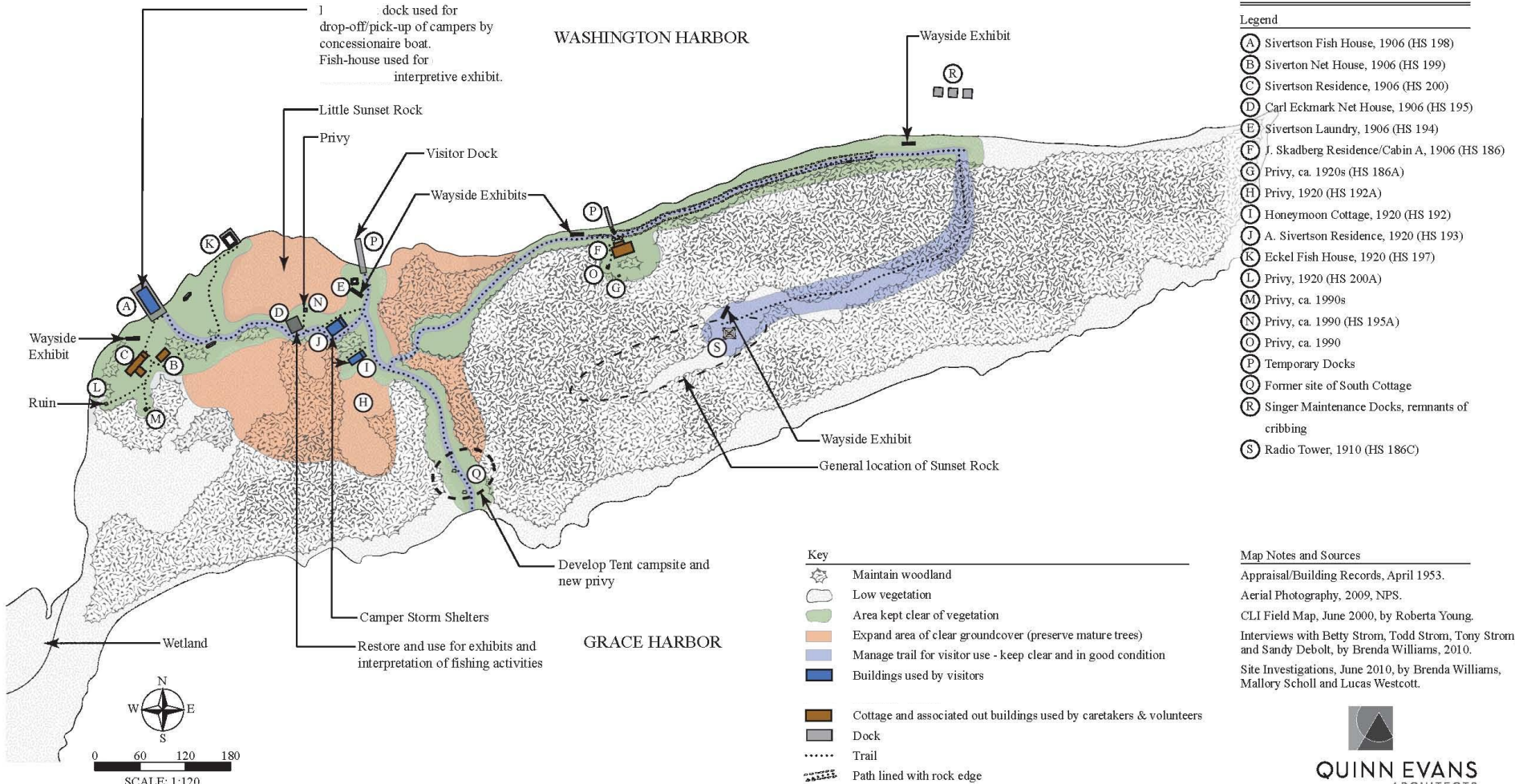
ISLE ROYALE NATIONAL PARK
Cultural Landscape Report & Environmental Assessment

Treatment Alternative #2



Preliminary Treatment Concept 2: Preservation with increased Visitor Opportunities

Treatment Alternative #2



Preliminary Treatment Concept 3: Rehabilitation with Demonstration Fishery

- Establish a fishing operation with scientific & interpretive components and increase visitor opportunities.
- Rehabilitate selected buildings to serve a fishing operation with a scientific research component; preserve other buildings and adaptively re-use them for housing for caretakers, volunteers, researchers, interpreters, and camper shelters.
- Develop a *landscape maintenance plan* to guide seasonal maintenance aimed at preserving the extant historic landscape features.
- Establish a camp tent site in the woods south of the Honeymoon Cottage.
- Provide *Dock space* for visitors at both Washington and Barnum Islands. Transportation between the islands would be via private boat—brought by visitors.
- Provide regularly scheduled interpretive tours of both islands.
- Consider providing one accessible dock at each island and an accessible route connection between the dock and a day use area with a privy.

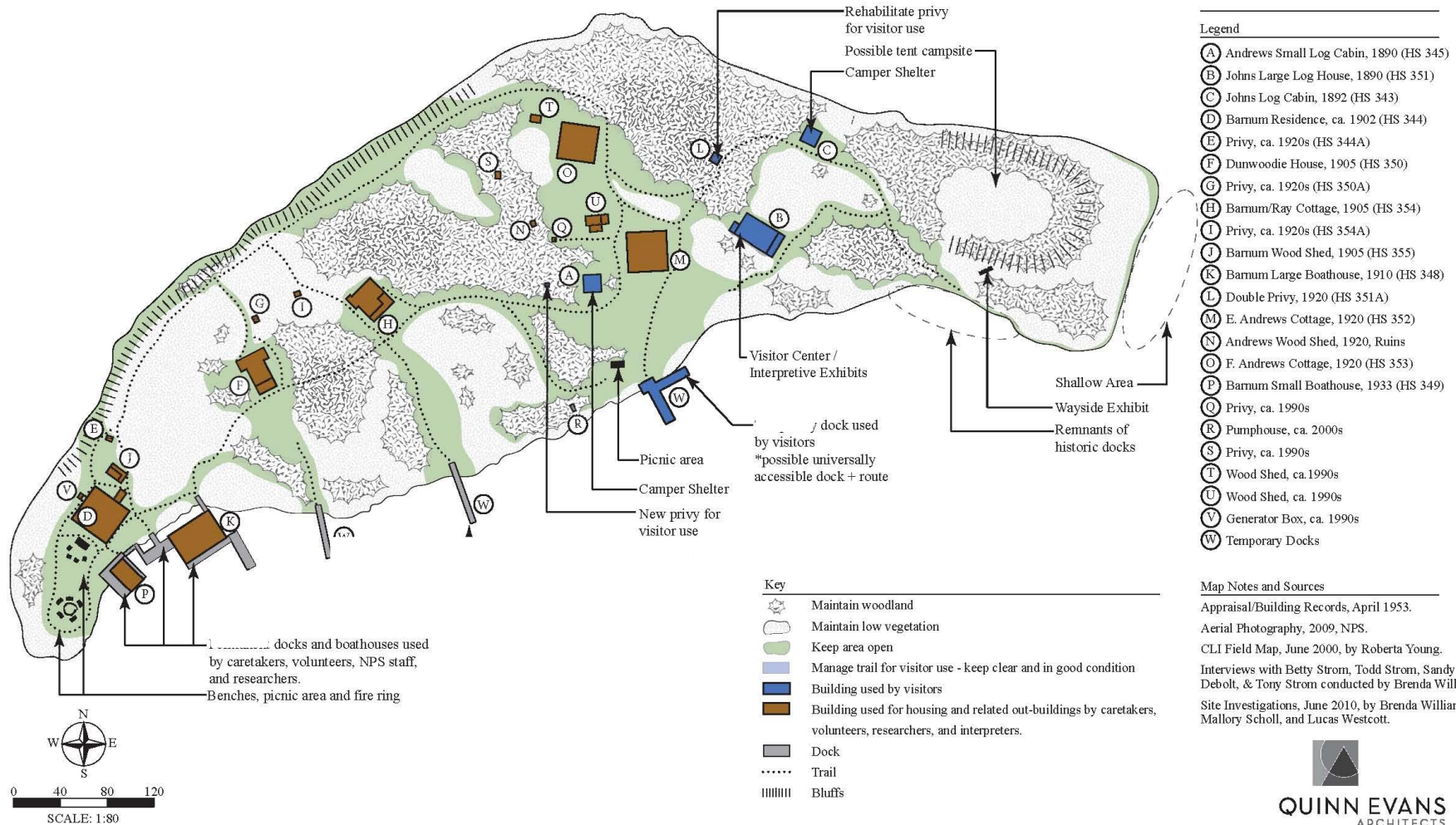


Preliminary Treatment Concept 3: Rehabilitation with Demonstration Fishery

Barnum Island

ISLE ROYALE NATIONAL PARK
Cultural Landscape Report & Environmental Assessment

Treatment Alternative #3

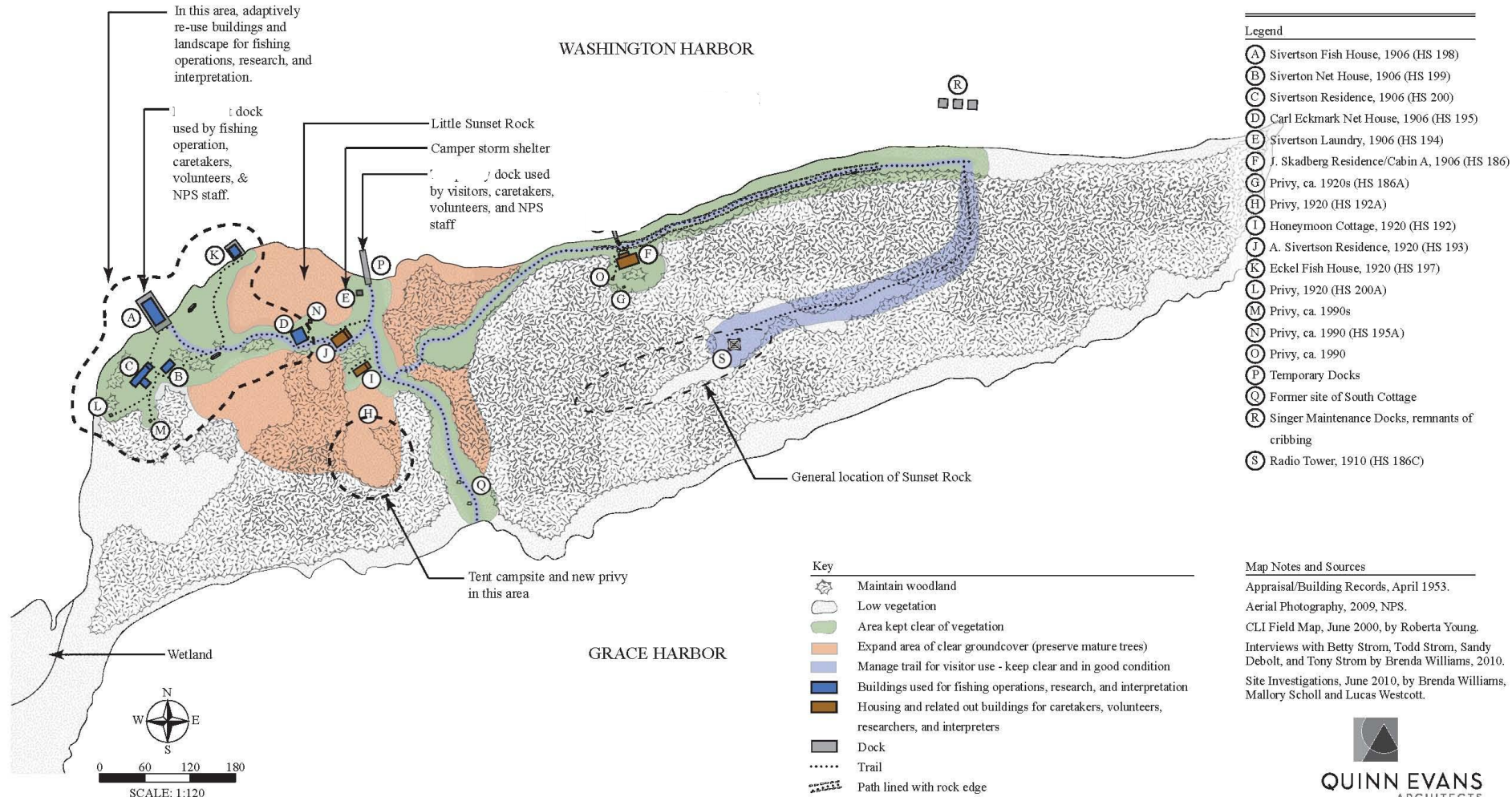


Preliminary Treatment Concept 3: Rehabilitation with Demonstration Fishery

Washington Island

ISLE ROYALE NATIONAL PARK
Cultural Landscape Report & Environmental Assessment

Treatment Alternative #3



Other Treatment Concepts

Rehabilitation: Establish Educational Programs located in the project area

Utilize the project area resources to provide a home for educational programs that may include: folk schools, family education programs, boy/girl scout programs, Objibwe language camp, and other programs.

Treatment Concept: Hands-off Management

This alternative would allow the extant landscape features to degrade without applied management efforts. The buildings would eventually deteriorate and become ruins, the vegetation would encroach into open areas and eventually succeed into woodland communities. The extensive historic resources would be lost.

Other ideas for treatment concepts?

