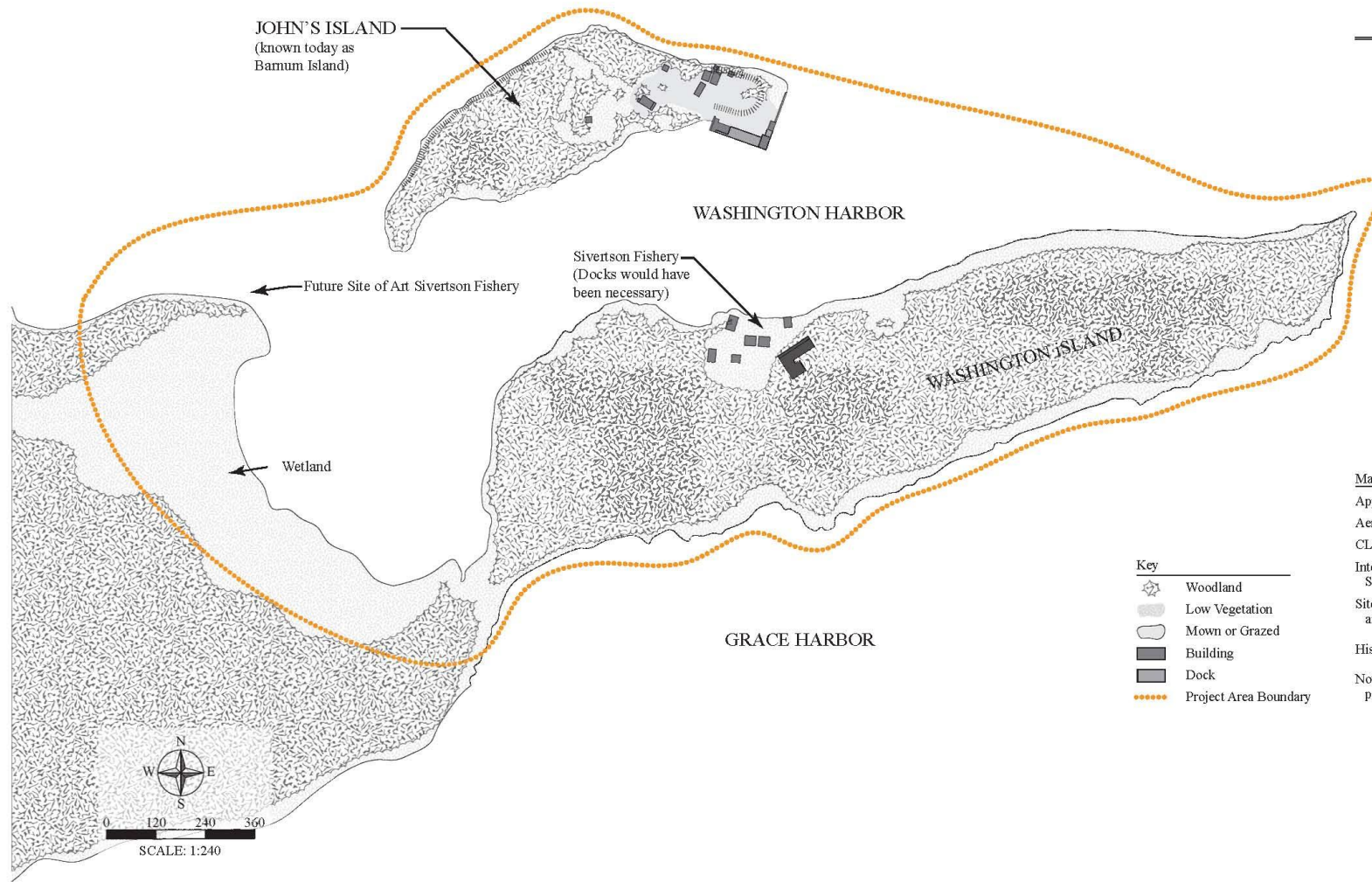


Historic Conditions, 1885-1901

Washington & Barnum Islands

ISLE ROYALE NATIONAL PARK
Cultural Landscape Report & Environmental Assessment

Historic Conditions 1885 - 1901



Map Notes and Sources

Appraisal/Building Records, April 1953.
Aerial Photography, 2009, NPS
CLI Field Map, June 2000, by Roberta Young.
Interviews with Betty Strom, Todd Strom, and
Sandy Debolt, by Brenda Williams, June 2010.
Site Investigations, June 2010, by Brenda Williams
and Mallory Scholl.
Historic photographs, ISRO Archives.
Note: Locations of vegetation during this
period are conjectural.



QUINN EVANS
ARCHITECTS

Cultural Landscape Report & Environmental Assessment

Internal Planning Workshop ~ February 16, 2011



ARCHITECTS

Barnum Island, 1892 - 1901

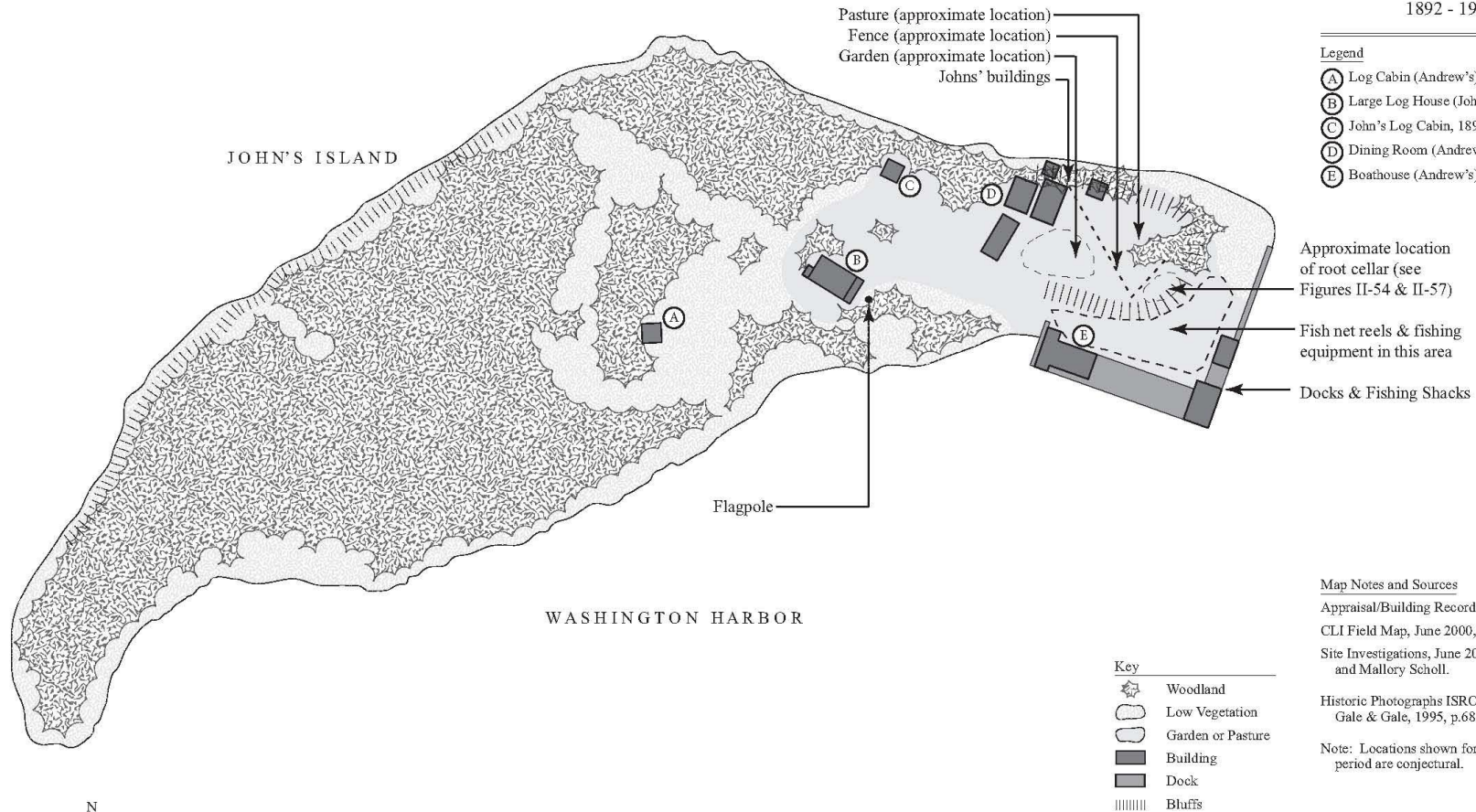
Barnum Island

ISLE ROYALE NATIONAL PARK
Cultural Landscape Report & Environmental Assessment

Period of Change Plan 1892 - 1901

Legend

- (A) Log Cabin (Andrew's), 1890 (HS 345)
- (B) Large Log House (John's), 1890 (HS 351)
- (C) John's Log Cabin, 1892 (HS 343)
- (D) Dining Room (Andrew's), 1900 (HS 342)
- (E) Boathouse (Andrew's), 1900 (HS 347)



Map Notes and Sources

Appraisal/Building Records, April 1953.
CLI Field Map, June 2000, by Roberta Young.
Site Investigations, June 2010, by Brenda Williams and Mallory Schell.

Historic Photographs ISRO archives and Gale & Gale, 1995, p.68.

Note: Locations shown for vegetation during this period are conjectural.



QUINN EVANS
ARCHITECTS

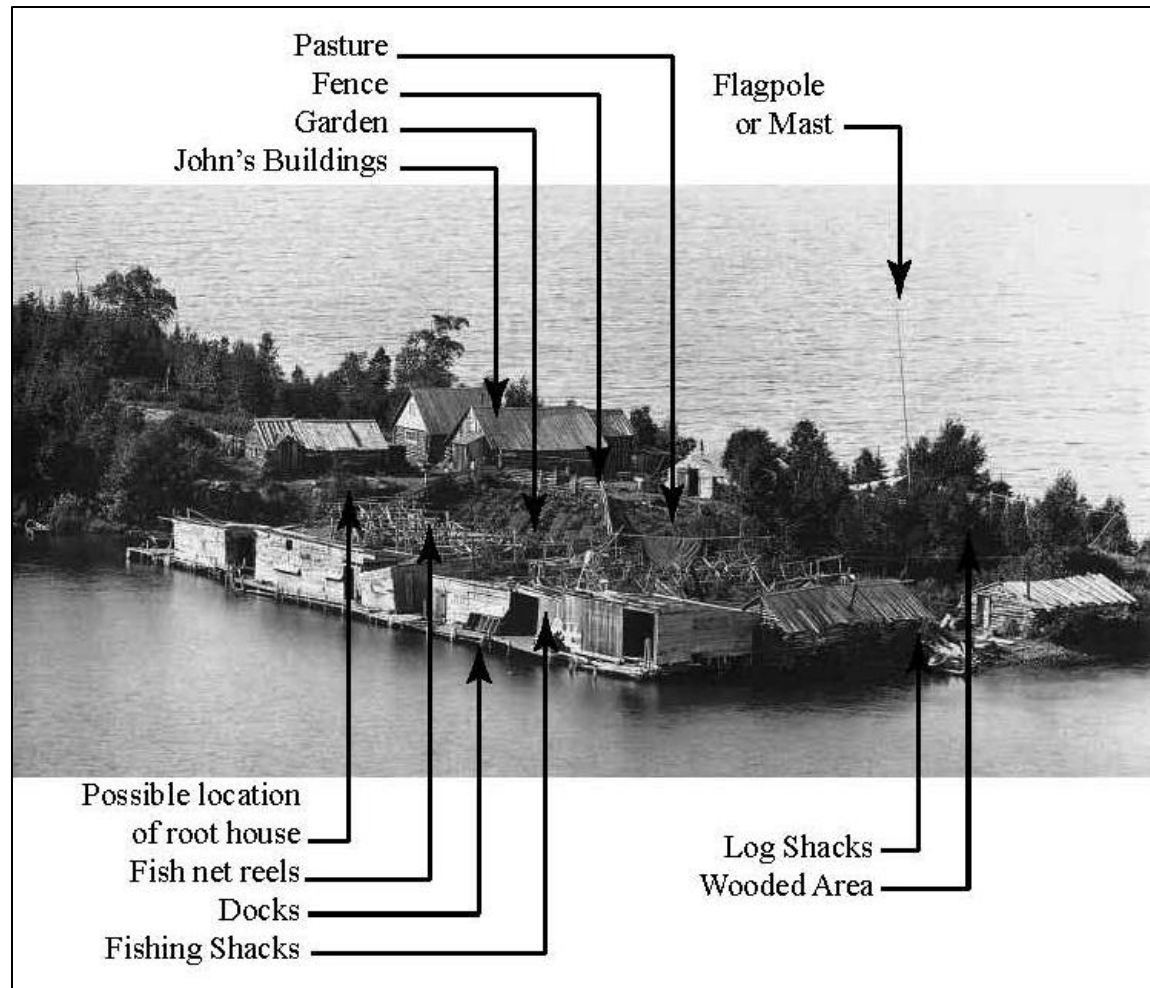


ARCHITECTS

Cultural Landscape Report & Environmental Assessment

Internal Planning Workshop ~ February 16, 2011

Eastern end of Barnum Island, 1896



Washington & Barnum Islands

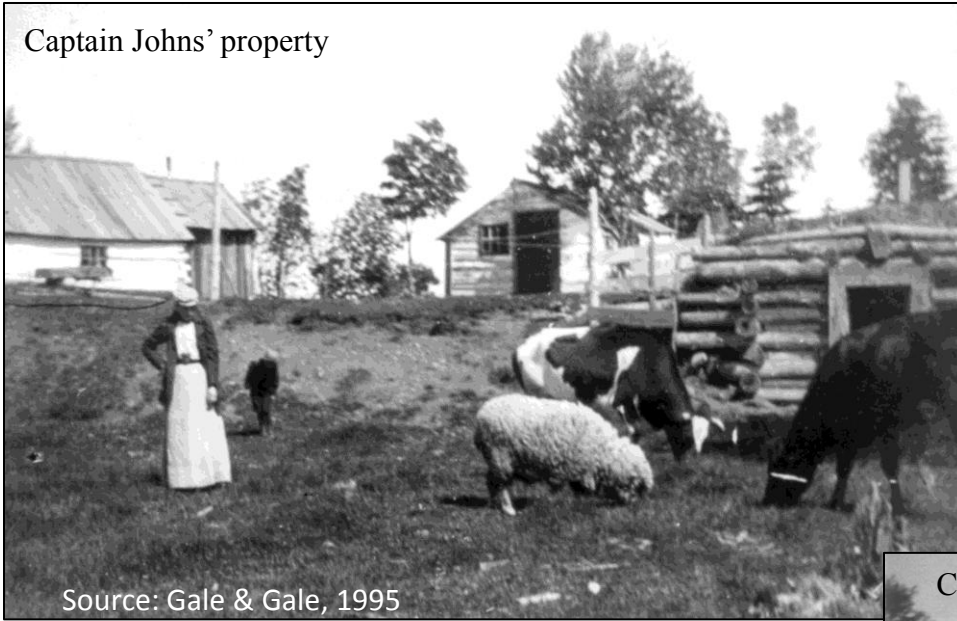
Cultural Landscape Report & Environmental Assessment



ARCHITECTS

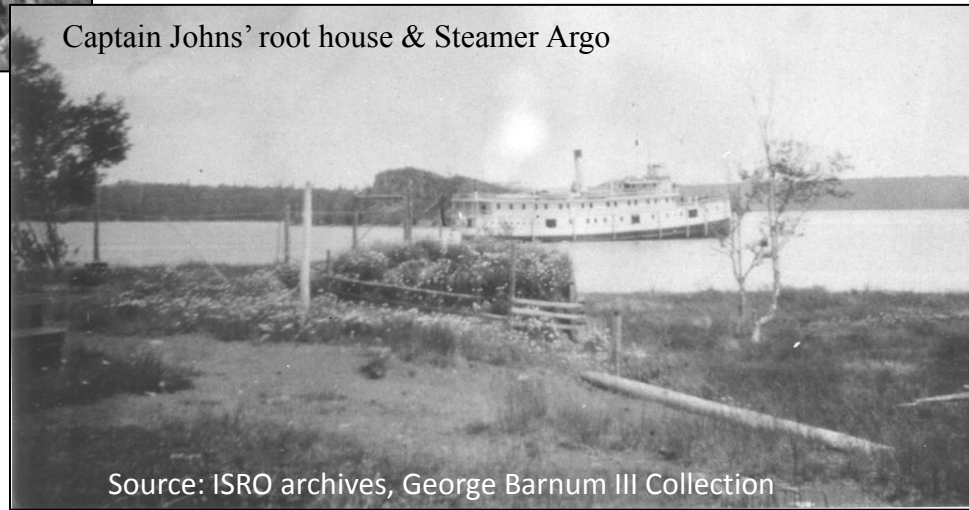
Internal Planning Workshop ~ February 16, 2011

Captain Johns' property



Source: Gale & Gale, 1995

Captain Johns' root house & Steamer Argo



Source: ISRO archives, George Barnum III Collection



ARCHITECTS

Washington & Barnum Islands

Cultural Landscape Report & Environmental Assessment

Internal Planning Workshop ~ February 16, 2011

Barnum Island, 1902 - 1908

Barnum Island

ISLE ROYALE NATIONAL PARK
Cultural Landscape Report & Environmental Assessment

Period of Change Plan 1902 - 1908

Legend

- (A) Andrews Small Log Cabin, 1890 (HS 345)
- (B) Johns Large Log House, 1890 (HS 351)
- (C) Johns Log Cabin, 1892 (HS 343)
- (D) Andrews Dining Room, 1900 (HS 342)
- (E) Andrews Boathouse, 1900 (HS 347)
- (F) Barnum Residence, ca. 1902 (HS 344)
- (G) Privy, ND (HS 344A)
- (H) Dunwoodie House, 1905 (HS 350)
- (I) Privy, ND (HS 350A)
- (J) Barnum/Ray Cottage, 1905 (HS 354)
- (K) Privy, ND (HS 354A)
- (L) Barnum Woodshed, 1905 (HS 355)



Key

- Woodland
- Low Vegetation
- Open Area
- Building
- Dock
- Bluffs

Map Notes and Sources

Appraisal/Building Records, April 1953.
CLI Field Map, June 2000, by Roberta Young.
Site Investigations, June 2010, by Brenda Williams and Mallory Scholl.
Historic photographs, ISRO archives.



QUINN EVANS
ARCHITECTS



ARCHITECTS

Cultural Landscape Report & Environmental Assessment

Internal Planning Workshop ~ February 16, 2011

Johns Hotel, opened 1892



Source: Gale & Gale, 1995

Visitors at Barnum Island



Source: ISRO archives



ARCHITECTS

Washington & Barnum Islands

Cultural Landscape Report & Environmental Assessment

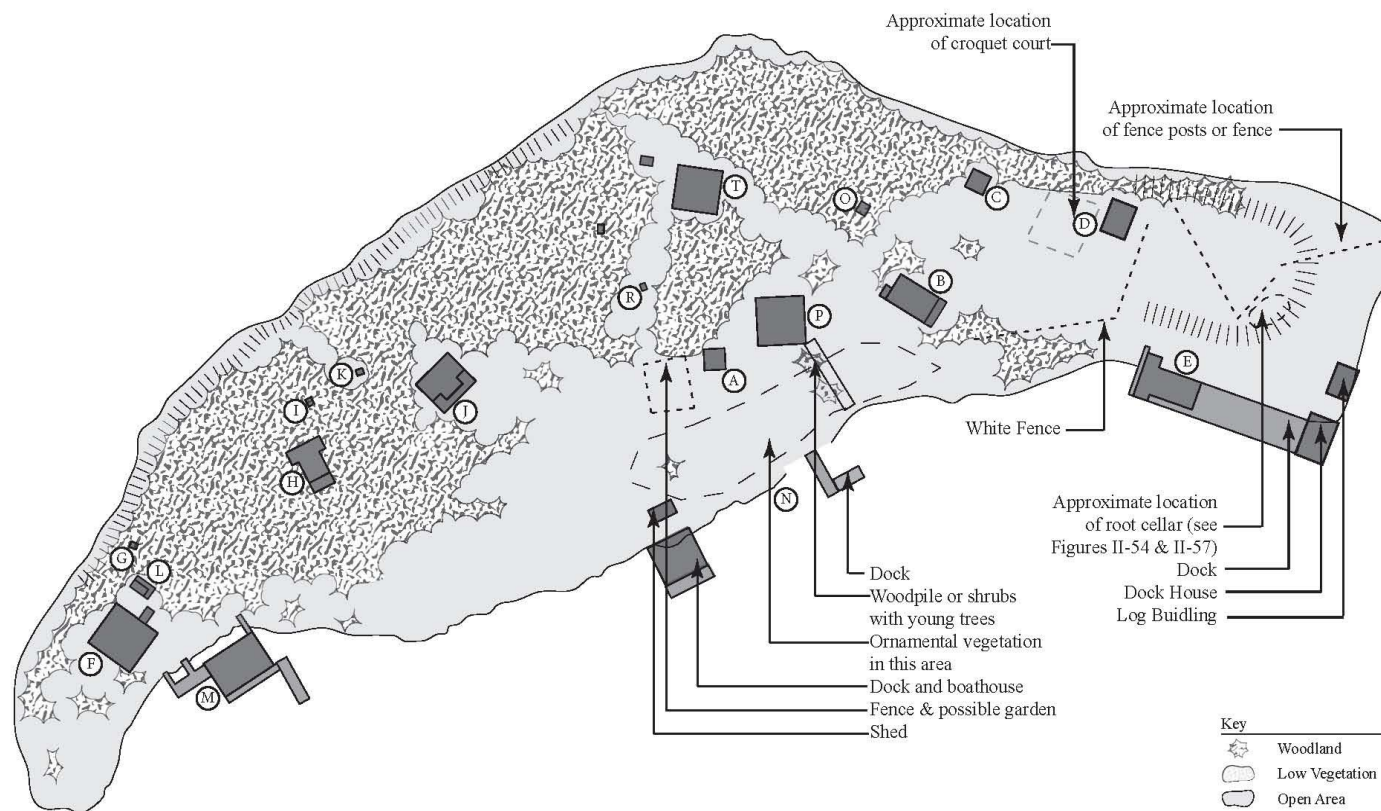
Internal Planning Workshop ~ February 16, 2011

Barnum Island, 1909 - 1930

Barnum Island

ISLE ROYALE NATIONAL PARK
Cultural Landscape Report & Environmental Assessment

Period of Change Plan 1909 - 1930



Legend

- (A) Andrews Small Log Cabin, 1890 (HS 345)
- (B) Johns Large Log House, 1890 (HS 351)
- (C) Johns Log Cabin, 1892 (HS 343)
- (D) Andrews Dining Room, 1900 (HS 347)
- (E) Andrews Boathouse, 1900 (HS 347)
- (F) Barnum Residence, ca. 1902 (HS 344)
- (G) Privy, ND (HS 344A)
- (H) Dunwoodie House, 1905 (HS 350)
- (I) Privy, ND (HS 350A)
- (J) Barnum/Ray Cottage, 1905 (HS 354)
- (K) Privy, ND (HS 354A)
- (L) Barnum Woodshed, 1905 (HS 355)
- (M) Barnum Large Boathouse, 1910 (HS 348)
- (N) Andrews Boathouse, 1920 (HS 346)
- (O) Double Privy, 1920 (HS 351A)
- (P) E. Andrews Cottage, 1920 (HS 352)
- (Q) Privy, ND (HS 352A)
- (R) Andrews Wood Shed, 1920
- (S) Andrews Smokehouse, 1920
- (T) F. Andrews Cottage, 1920 (HS 353)

Key

- Woodland
- Low Vegetation
- Open Area
- Building
- Dock
- Bluffs

Map Notes and Sources

Appraisal/Building Records, April 1953.
Aerial Photography, 1930, NPS.
CLI Field Map, June 2000, by Roberta Young.
Site Investigations, June 2010, by Brenda Williams and Mallory Scholl.
Historic Photographs, ISRO Archives.



Cultural Landscape Report & Environmental Assessment

Internal Planning Workshop ~ February 16, 2011



ARCHITECTS

Barnum Island, the “x” is over the common dining room.



Source: ISRO archives, George Barnum III collection



ARCHITECTS

Washington & Barnum Islands

Cultural Landscape Report & Environmental Assessment

Internal Planning Workshop ~ February 16, 2011

Playing croquet near Johns' log house, ca. 1910



Source: ISRO archives, George Barnum III Collection



ARCHITECTS

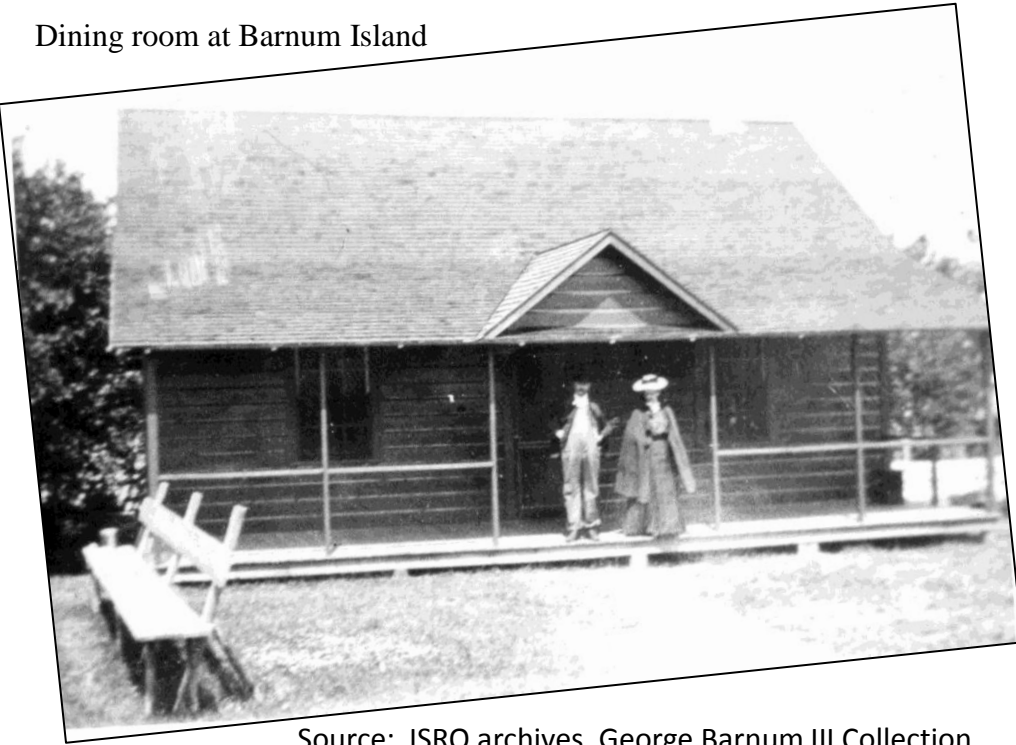
Washington & Barnum Islands

Cultural Landscape Report & Environmental Assessment

Internal Planning Workshop ~ February 16, 2011

Barnum Island

Dining room at Barnum Island



Source: ISRO archives, George Barnum III Collection

Dining room and croquet court at Barnum Island



Source: ISRO archives, George Barnum III Collection



ARCHITECTS

Washington & Barnum Islands Cultural Landscape Report & Environmental Assessment

Internal Planning Workshop ~ February 16, 2011

Barnum Island, 1931 - 2009

Barnum Island








ISLE ROYALE NATIONAL PARK
Cultural Landscape Report & Environmental Assessment

Period of Change Plan 1931 - 2009

Legend

- (A) Andrews Small Log Cabin, 1890 (HS 345)
- (B) Johns Large Log House, 1890 (HS 351)
- (C) Johns Log Cabin, 1892 (HS 343)
- (D) Andrews Dining Room, 1900 (HS 342)
- (E) Andrews Boathouse, 1900 (HS 347)
- (F) Barnum Residence, ca. 1902 (HS 344)
- (G) Privy, ND (HS 344A)
- (H) Dunwoodie House, 1905 (HS 350)
- (I) Privy, ND (HS 350A)
- (J) Barnum/Ray Cottage, 1905 (HS 354)
- (K) Privy, ND (HS 354A)
- (L) Barnum Woodshed, 1905 (HS 355)
- (M) Barnum Large Boathouse, 1910 (HS 348)
- (N) Andrews Boathouse, 1920 (HS 346)
- (O) Double Privy, 1920 (HS 351A)
- (P) E. Andrews Cottage, 1920 (HS 352)
- (Q) Privy, ND (HS 352A)
- (R) Andrews Wood Shed, 1920
- (S) Andrews Smokehouse, 1920
- (T) F. Andrews Cottage, 1920 (HS 353)
- (U) Barnum Small Boathouse, 1933 (HS 349)

Key

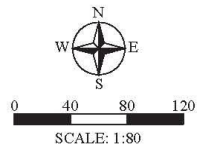
-  Woodland
-  Low Vegetation
-  Mown Area
-  Building
-  Dock
-  Trail
-  Bluffs

Map Notes and Sources

- Appraisal/Building Records, April 1953.
- Aerial Photography, 2009, NPS.
- CLI Field Map, June 2000, by Roberta Young.
- Site Investigations, June 2010, by Brenda Williams and Mallory Scholl.
- Historic Photographs, ISRO archives.



QUINN EVANS
ARCHITECTS



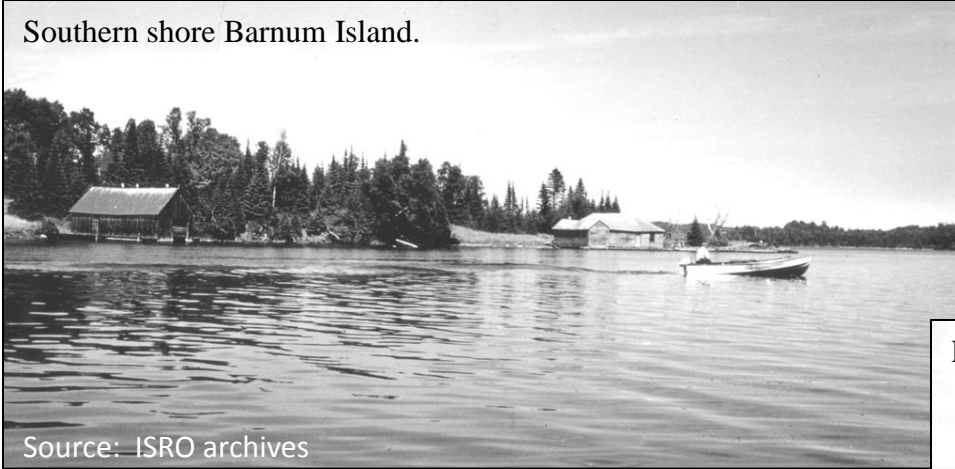
ARCHITECTS

Cultural Landscape Report & Environmental Assessment

Internal Planning Workshop ~ February 16, 2011

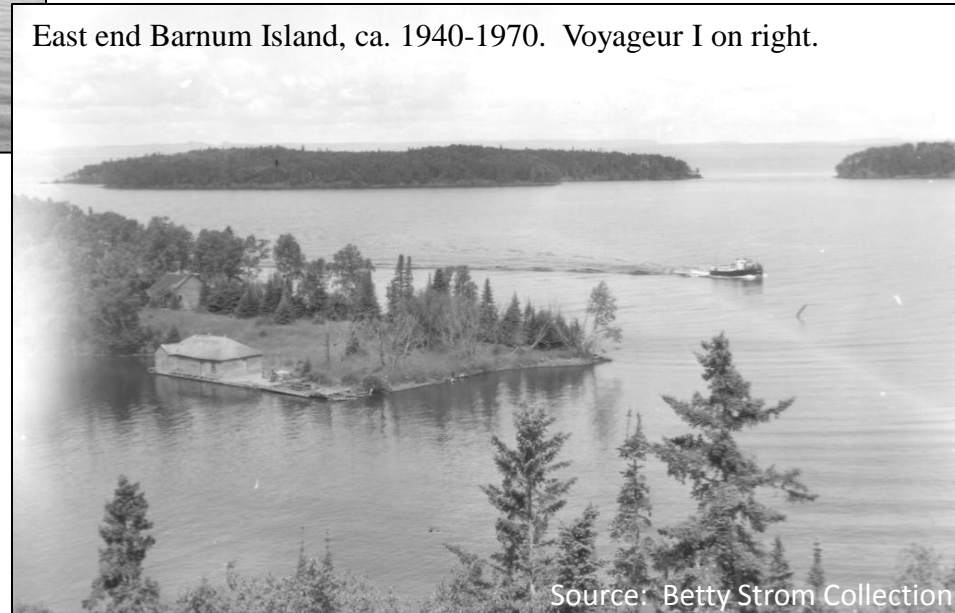
Barnum Island, 1931 - 2009

Southern shore Barnum Island.



Source: ISRO archives

East end Barnum Island, ca. 1940-1970. Voyageur I on right.



Source: Betty Strom Collection



ARCHITECTS

Washington & Barnum Islands Cultural Landscape Report & Environmental Assessment

Internal Planning Workshop ~ February 16, 2011