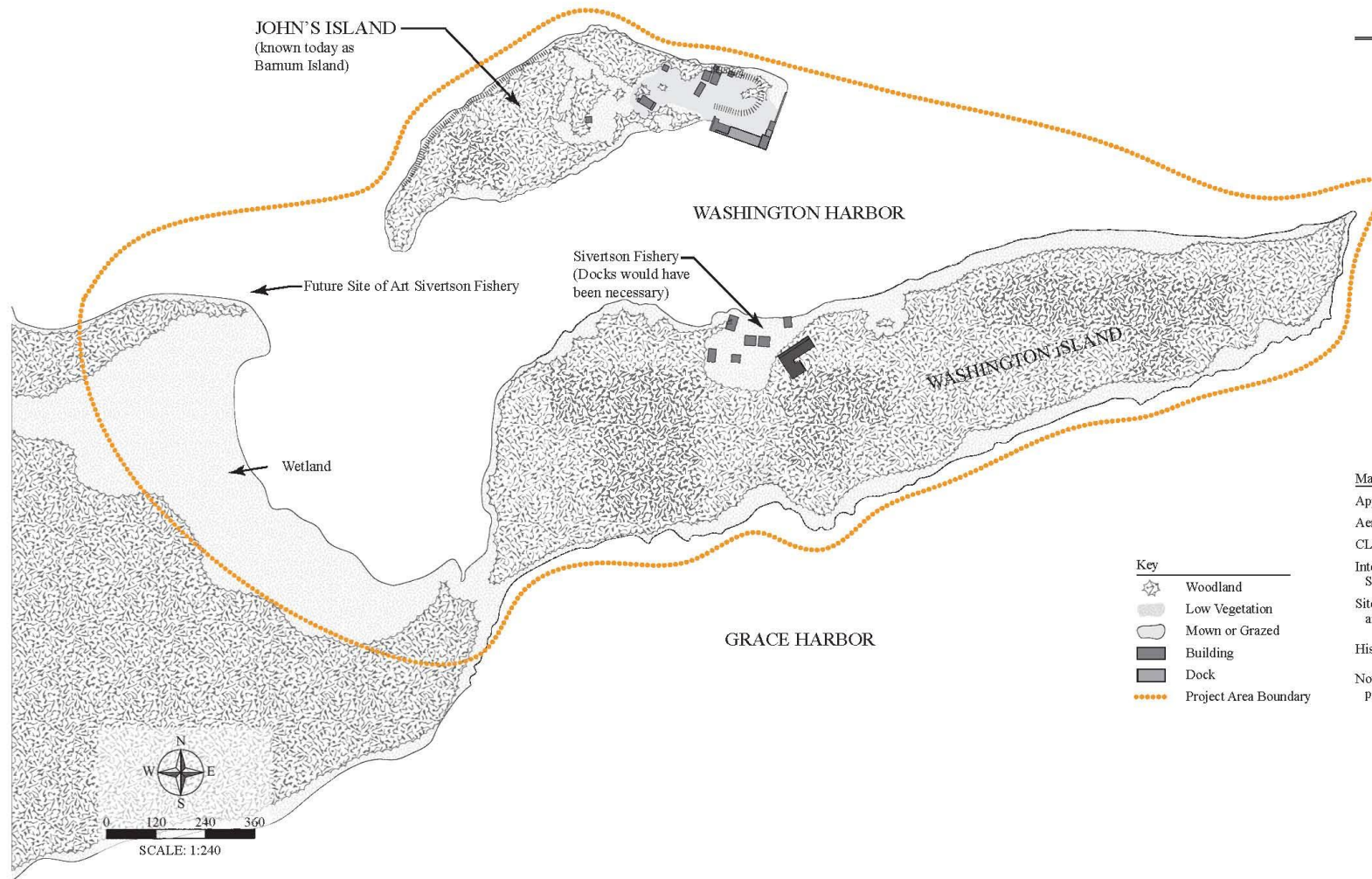


# Historic Conditions, 1885-1901

## Washington & Barnum Islands

ISLE ROYALE NATIONAL PARK  
Cultural Landscape Report & Environmental Assessment

### Historic Conditions 1885 - 1901



#### Map Notes and Sources

Appraisal/Building Records, April 1953.

Aerial Photography, 2009, NPS

CLI Field Map, June 2000, by Roberta Young.

Interviews with Betty Strom, Todd Strom, and  
Sandy Debolt, by Brenda Williams, June 2010.

Site Investigations, June 2010, by Brenda Williams  
and Mallory Scholl.

Historic photographs, ISRO Archives.

Note: Locations of vegetation during this  
period are conjectural.



QUINN EVANS  
ARCHITECTS

General Notes:

1) Information regarding vegetation for this period is conjectural. Although surveys were conducted of the Isle Royale archipelago in 1848, 1868, 1871, and 1906, the scale of the information presented is very general in the project area. The lack of detailed commentary regarding the eastern portion of Washington Island has been interpreted as an indication that the area was mostly wooded.

# Washington Island, 1885-1901

## Washington Island

ISLE ROYALE NATIONAL PARK  
Cultural Landscape Report & Environmental Assessment

Period of Change  
1885 - 1901

Legend

(A) Island House Hotel/Lodge, ca. 1901

### WASHINGTON HARBOR

Fishing development, including shacks, net reels, and laundry areas. At least one dock would have been present in this general area during this time period, its location is unknown.

It is likely that the northern shores had low vegetation.

The southern shores included rocky cliffs, as they do today.

Wetland

### GRACE HARBOR

Key

Woodland  
Building

Map Notes and Sources

Appraisal/Building Records, April 1953.  
Aerial Photography, 2009, NPS  
CLI Field Map, June 2000, by Roberta Young.  
Site Investigations, June 2010, by Brenda Williams and Mallory Scholl.  
Survey Maps: 1848, 1868, 1871, and 1906  
Survey Map, Oastler, 1929  
Historic Photographs, Isle Royale Archives.



QUINN EVANS  
ARCHITECTS



QUINN EVANS  
ARCHITECTS

Cultural Landscape Report & Environmental Assessment

Internal Planning Workshop ~ February 16, 2011

## Washington Island, ca. 1903



(source: ISRO cat.5471 2a, R.E. Johns Collection)

## Washington & Barnum Islands

Cultural Landscape Report & Environmental Assessment



QUINN EVANS  
ARCHITECTS

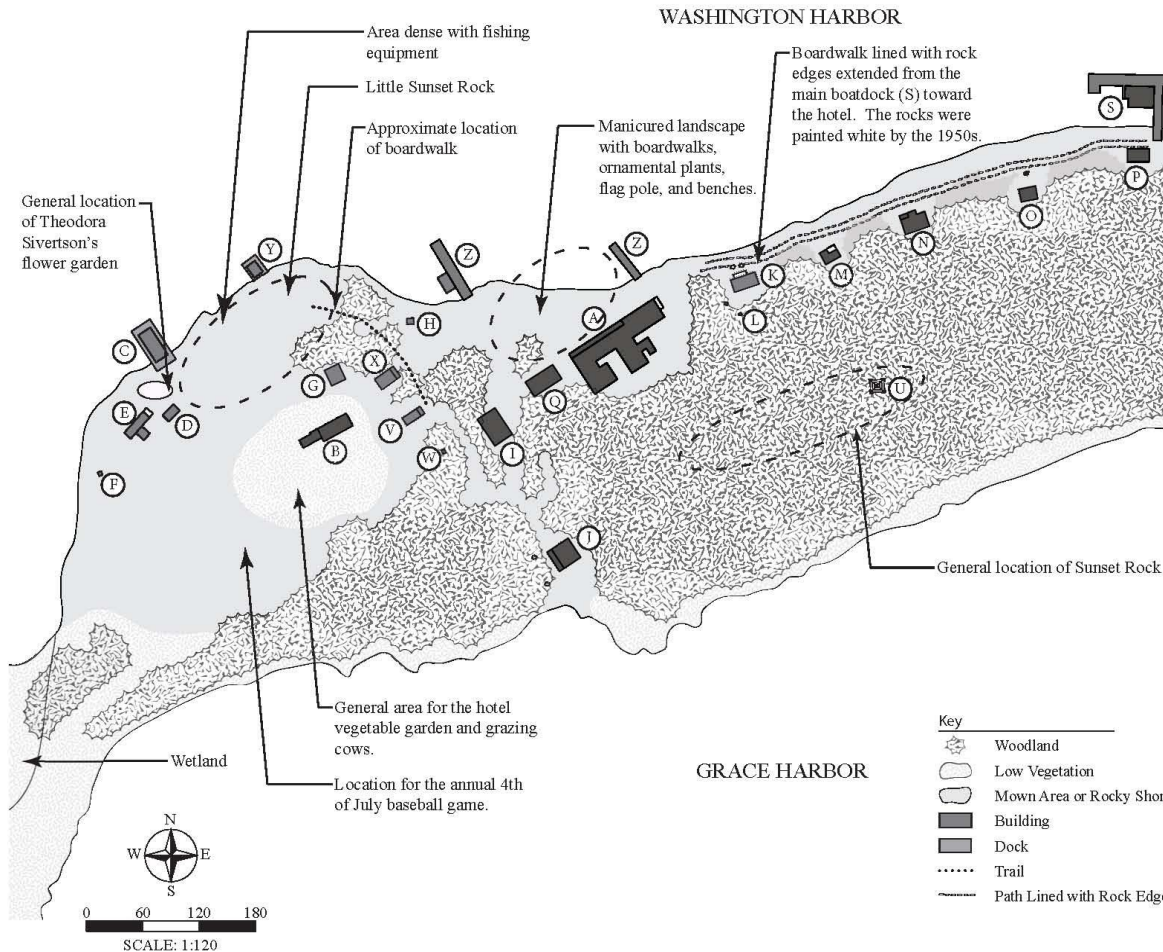
Internal Planning Workshop ~ February 16, 2011

# Washington Island, 1902 - 1930

## Washington Island

ISLE ROYALE NATIONAL PARK  
Cultural Landscape Report & Environmental Assessment

### Period of Change 1902 - 1930



#### Legend

- (A) Island House Hotel/Lodge, ca. 1901
- (B) Barn, ca. 1903
- (C) Sivertson Fish House, 1906 (HS 198)
- (D) Sivertson Net House, 1906 (HS 199)
- (E) Sivertson Residence, 1906 (HS 200)
- (F) Privy, ca. 1920 (HS 200A)
- (G) Carl Eckmark Net House, 1906 (HS 195)
- (H) Sivertson Laundry, 1906 (HS 194)
- (I) Owner House
- (J) South Cottage (HS 191)
- (K) J. Skadberg Residence/Cabin A, 1906 (HS 186)
- (L) Privy, ca. 1906 (HS 186A)
- (M) Cabin B (HS 185)
- (N) Cabin C (HS 184)
- (O) Cabin D (HS 183)
- (P) Machine Shop (per Betty Strom) (HS 181)
- (Q) Cabin F
- (R) Warehouse (HS 180)
- (S) Boathouse (HS 182)
- (T) Pavilion/Dance Hall
- (U) Wireless Antenna, 1910 (HS 186C)
- (V) Honeymoon Cottage, 1920 (HS 192)
- (W) Privy, ca. 1910 (HS 192A)
- (X) A. Sivertson Residence, 1920 (HS 193)
- (Y) Eckel Fish House, 1920 (HS 197)
- (Z) Temporary Docks
- (AA) Cabin E (per Betty Strom)
- (BB) Cabin EE (per Betty Strom)

#### Map Notes and Sources

Appraisal/Building Records, April 1953.  
Aerial Photography, 1930, NPS.  
CLI Field Map, June 2000, by Roberta Young.  
Interviews with Betty Strom, Todd Strom, and Sandy Debolt, by Brenda Williams.  
Site Investigations, June 2010, by Brenda Williams and Mallory Scholl.  
Historic Photographs, ISRO Archives.  
Cabins AA and BB were present in the early 1900s through 1930 per Betty Strom.



QUINN EVANS  
ARCHITECTS

## Cultural Landscape Report & Environmental Assessment

Internal Planning Workshop ~ February 16, 2011

## Daily life in the Fishing Village



Source: Howard Sivertson, 1992, "Shore Work"

## Washington & Barnum Islands Cultural Landscape Report & Environmental Assessment



QUINN EVANS  
ARCHITECTS

Internal Planning Workshop ~ February 16, 2011

# Theodora Sivertson's Rock Garden



Source: Howard Sivertson, 1992, 51

## Washington & Barnum Islands Cultural Landscape Report & Environmental Assessment

# Island House / Singerville Resort, ca. 1900



Source: ISRO archives, cat. 1158

## Washington & Barnum Islands Cultural Landscape Report & Environmental Assessment



QUINN EVANS  
ARCHITECTS

Internal Planning Workshop ~ February 16, 2011

## Island House / Singerville Resort, ca. 1910



Source: APIS archives, cat. 2276

## Washington & Barnum Islands

Cultural Landscape Report & Environmental Assessment

# Singer Resort, viewed from Barnum Island



Source: ISRO archives, George Barnum III Collection



QUINN EVANS  
ARCHITECTS

## Washington & Barnum Islands Cultural Landscape Report & Environmental Assessment

Internal Planning Workshop ~ February 16, 2011

## Singer Resort, 1924 brochure



Source: APIS cat. 2277



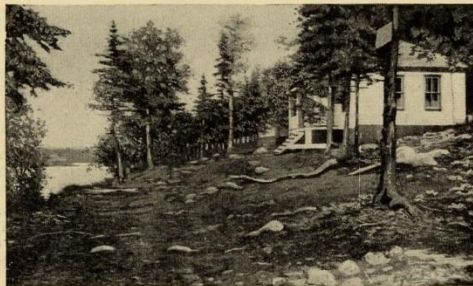
QUINN EVANS  
ARCHITECTS

# Picturesque Washington Harbor

## *The Mecca*

For all tourists, and for all lovers of outdoor sports, and for those that seek rest and health. The air is perfectly pure and the temperature delightful.

There are wonderful places to explore, mountains to climb and rivers to trace to their sources. Boating around this Harbor offers an ever changing panorama of beauty. The scenery is exceedingly wild, picturesque, entertaining and ever interesting. Fishing is only one of the many attractions. The shores are studded with numerous shady nooks, making the harbor a veritable trout paradise, and the remarkable clearness of the water makes it possible to see bottoms at a depth of 45 feet. Brook trout is also plentiful.



Cottage Along the Shore

To the Sportsman—This region offers a vast territory of unexplored forest, which affords unequalled opportunity for both large and small game. Moose and caribou are still to be found, also red deer and bear. Other small game and fur bearing animals are in abundance.

Air foul consists of the crying gull, loon, duck, snipe, wood cock, crane, havor duck, hawk, eagle, eider duck, woodpecker, and song birds are numerous.

### ISLAND HOUSE AND COTTAGES

The Island House with its adjoining cottages is the ideal summer resort, occupying the most beautiful and picturesque location, comprising of 260 acres of wild, romantic scenery. It is the largest and best Hotel on Isle

Royale, is open from June 15th to October 1st, having accommodations for 200 guests.

The meals are hearty, wholesome and delicious, with an abundance of fresh caught fish at every meal, if desired.

The many summer cottages and comfortable hotel may be described as homelike and most comfortable, conforming so harmoniously with the wild and rugged sublimity of the surroundings. The rooms are quiet and tastefully furnished, the dining room large and roomy, with a large cobblestone fireplace, all in keeping with the other appointments of the Hotel.

### AMUSEMENTS

Washington Harbor is more than just a place to go for fishing, eating and sleeping. It is a place for good, solid fun every hour from the time you rise until you retire at night. Every kind of sport is offered without the formality and dress.

There can be had row boats, small launches and guides at reasonable rates.

### RATES

Rooms in Hotel, each person per day.....	\$3.00
Cottages, 2 to 5 rooms, each person per day.....	\$3.50

**Make Reservations in Advance**



A Regular Visitor and His Catch

*Address* MARY E. SINGER

WASHINGTON HARBOR, ISLE ROYALE

P. O.—Singerville, Mich. via Duluth, Minn.

From October to May 1st, 5207 Winthrop Ave., Chicago, Ill.

*Additional copies of this folder can be obtained on request.*

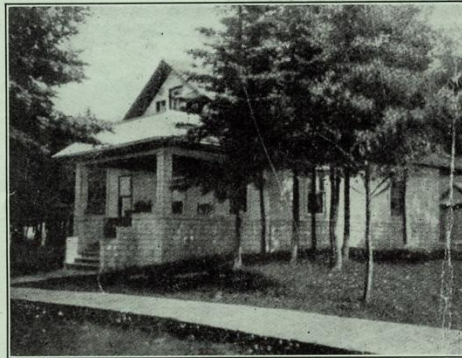
## Singer Resort, 1927 brochure

# Picturesque Washington Harbor

## *The Mecca*

For all tourists, and for all lovers of outdoor sports, and for those that seek rest and health. The air is perfectly pure and the temperature delightful.

There are wonderful places to explore, mountains to climb and rivers to trace to their sources. Boating around this Harbor offers an ever changing panorama of beauty. The scenery is exceedingly wild, picturesque, entertaining and ever interesting. Fishing is only one of the many attractions. The shores are studded with numerous shady nooks, making the harbor a veritable trout paradise, and the remarkable clearness of the water makes it possible to see bottom at a depth of 45 feet. Brook trout is also plentiful.



A Cozy Home, All Comforts.

To the Sportsman—This region offers a vast territory of unexplored forest, which affords unequalled opportunity for both large and small game. Moose and caribou are still to be found, also red deer and bear. Other small game and fur bearing animals are in abundance.

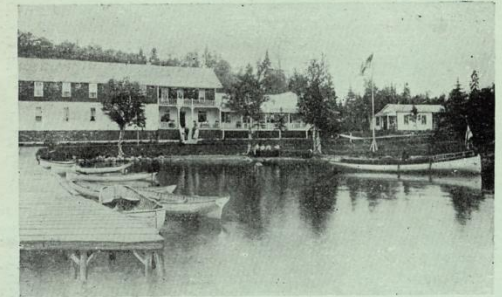
Air fowl consists of the crying gull, loon, duck, snipe, wood cock, crane, havor duck, hawk, eagle, elder duck, woodpecker, and song birds are numerous.

### ISLAND HOUSE AND COTTAGES

The Island House with its adjoining cottages is the ideal summer resort, occupying the most beautiful and picturesque location, comprising of 260 acres of wild, romantic scenery. It is the **largest and best** Hotel on Isle Royale, is open from June 15th to October 1st, having accommodations for 200 guests.

The meals are hearty, wholesome and delicious, with an abundance of fresh caught fish at every meal, if desired.

The many summer cottages and comfortable hotel may be described as homelike and most comfortable, conforming so harmoniously with the wild and rugged sublimity of the surroundings. The rooms are quiet and tastefully furnished, the dining room large and roomy, with a large cobblestone fireplace, all in keeping with the other appointments of the Hotel.



"Island House"

### AMUSEMENTS

Washington Harbor is more than just a place to go for fishing, eating and sleeping. It is a place for good, solid fun every hour from the time you rise until you retire at night. Every kind of sport is offered without the formality and dress.

There can be had row boats, small launches and guides at reasonable rates.

### RATES INCLUDING MEALS

Rooms in Hotel, each person per day.....\$3.50  
Cottages, 2 to 5 rooms, each person per day..... 4.00

### Make Reservations in Advance



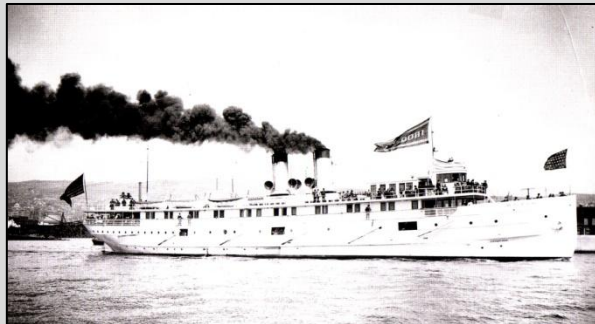
A Regular Visitor and His Morning's Catch

**WASHINGTON HARBOR, ISLE ROYALE**  
**Singerville Mich. via Duluth, Minn.**

MARY E. SINGER, Prop.  
5207 Winthrop Ave., Chicago, Ill.  
R. S. CAMPBELL, Mgr.

Additional copies of this folder can be obtained on request

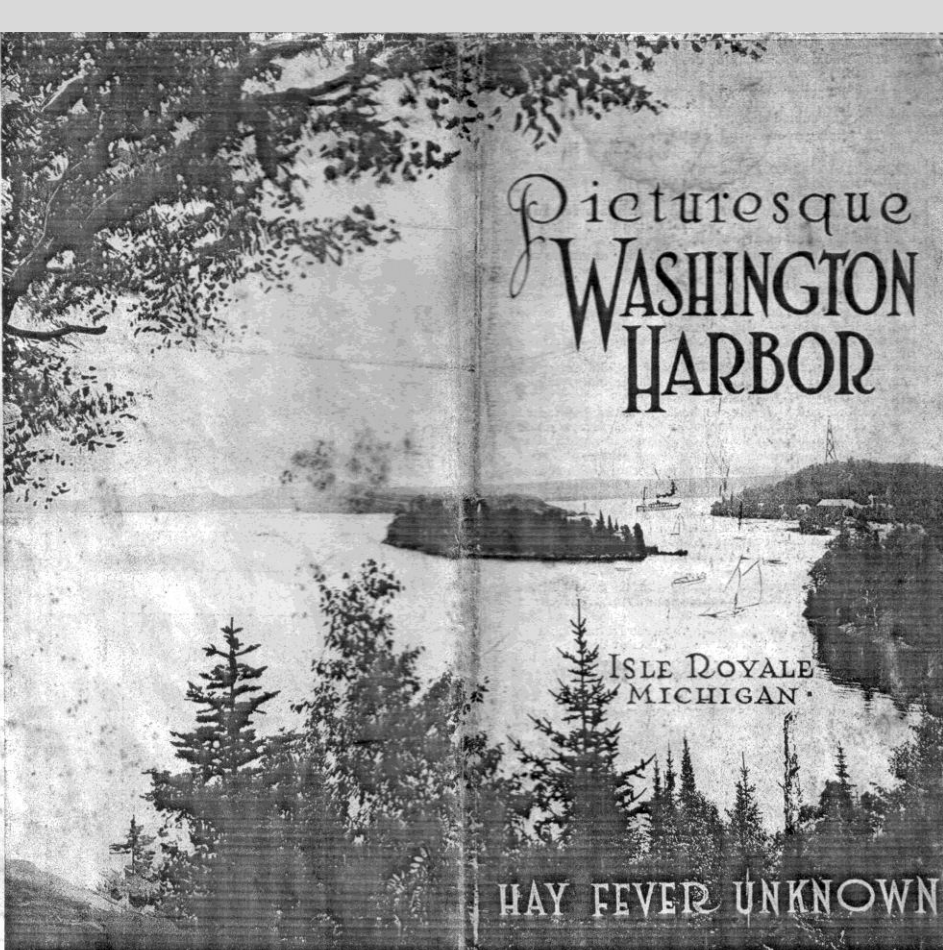
The Iroquois & other steamers  
provided luxurious transportation  
to the resort.



Source: Gale & Gale, 1995, 49



QUINN EVANS  
ARCHITECTS



# Picturesque WASHINGTON HARBOR

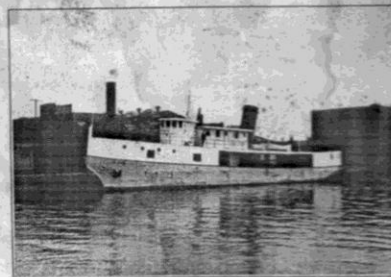
ISLE ROYALE  
MICHIGAN

HAY FEVER UNKNOWN

SEASON OPEN JUNE 15th  
CLOSES OCTOBER 1st

## ISLAND HOUSE

MARY E. SINGER, Prop.  
ROY M. RHEUTAN, Manager



### HOW TO REACH WASHINGTON HARBOR, ISLE ROYALE

The fishing steamer "Winyah," with accommodations for eleven people, leaves Duluth every Tuesday and Saturday at 10 o'clock A. M. and Thursday at 11 A. M., leaves Grand Marais, Minn., on the same days, at 8 o'clock P. M., arriving at Washington Harbor at about 4 o'clock the following morning. Thursdays boat goes direct to Washington Harbor unless other arrangements are made with the owners.

The steamer leaves Washington Harbor every Wednesday, Friday and Sunday at about 6 o'clock P. M., arriving at Duluth at about 10 o'clock A. M., on Mondays, Thursdays and Saturdays.

The above schedule is subject to change without notice and the time quoted is of course subject to weather conditions and delays.

Reservations for passage should be made with H. CHRISTIANSEN & SONS, Duluth owners of the "Winyah." Christiansen's Dock, Lake Avenue South, Duluth, Minn.

Washington Harbor CAN NOT be reached by boat from Port Arthur, Canada.

**By Auto and Boat:** Autoists desiring to reach Washington Harbor, Isle Royale, will take the new Duluth North Shore Drive to GRAND MARAIS, Minn. Excellent hotel and garage accommodations provided at Grand Marais, Minn., and connections can be made with steamer Winyah direct to Washington Harbor, Isle Royale.

**By Bus:** The Northland Transportation Company operates busses daily between Duluth and Grand Marais, Minn. Boat connections can be made at this point with steamer Winyah.

Busses leave Duluth daily from 507 West Superior Street.

Leave Duluth 9 A. M., reaches Grand Marais 1:00 P. M.

Leave Duluth 5:15 P. M., reaches Grand Marais 9:15 P. M.

Leave Grand Marais 8:45 A. M., reaches Duluth 12:45 P. M.

Leave Grand Marais 12:30 P. M., reaches Duluth 6:30 P. M.

### RATES

#### Rooms in Hotel

Each person per day .....\$3.50 up  
Cottages, 2 to 5 rooms, each person per day .....\$4.00 up  
Children under ten years of age and occupying rooms with parents .....One-half rates

The above rates are American plan including meals and are based on two or more persons occupying a room or cottage.

Motor boats, row boats and guides can be provided upon application at the office.



### SPECIAL EXCURSIONS

(For parties of ten or more)

To "Rock of Ages," Rainbow Cove or Club House each person, round trip .....\$1.00

Numerous brook trout streams are easily accessible from Washington Harbor where speckled trout abound, affording one the long looked for pleasure which only has been enjoyed by the guests visiting there.

Fly fishing is to be had at its best here.

Any further information as to rates, bookings, etc., will be cheerfully furnished.



### ADDRESS

MARY E. SINGER

Washington Harbor, Isle Royale, Mich.,  
via Duluth, Minn.

From October to May 1st—5207 Winthrop Ave.,  
Chicago, Ill.

Additional copies of this folder can be obtained on application.



MAKE RESERVATIONS IN ADVANCE

Washington Harbor Brochure (source: Betty Strom)

# Washington & Barnum Islands Cultural Landscape Report & Environmental Assessment

Internal Planning Workshop ~ February 16, 2011



QUINN EVANS  
ARCHITECTS

## Fishermen oiling net corks & siening for herring, ca. 1930s



Source: ISRO archives, George Barnum III Collection

## Washington & Barnum Islands Cultural Landscape Report & Environmental Assessment



QUINN EVANS  
ARCHITECTS

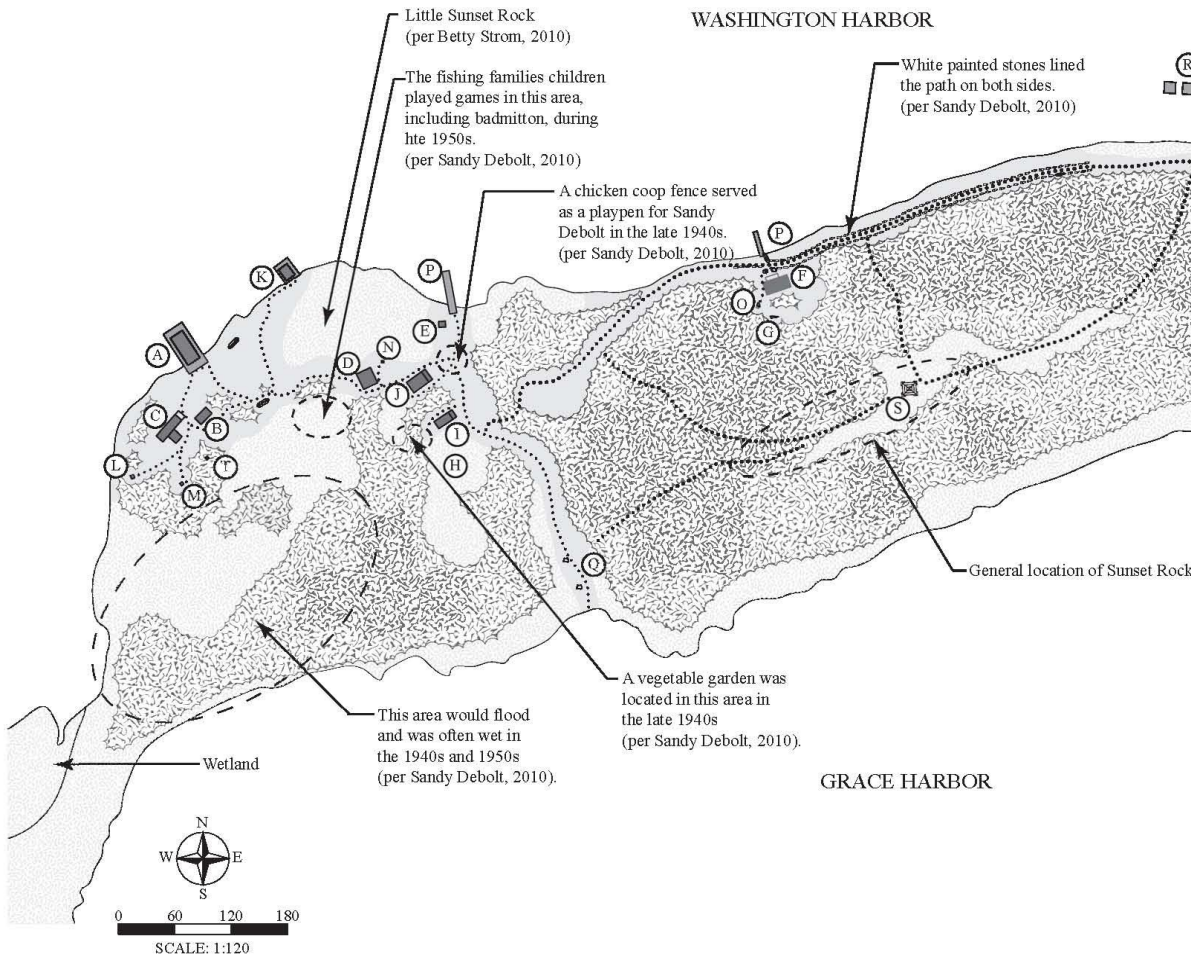
Internal Planning Workshop ~ February 16, 2011

# Washington Island, 1931 - 2009

Washington Island

ISLE ROYALE NATIONAL PARK  
Cultural Landscape Report & Environmental Assessment

Period of Change  
1931 - 2009



## Legend

- (A) Sivertson Fish House, 1906 (HS 198)
- (B) Sivertson Net House, 1906 (HS 199)
- (C) Sivertson Residence, 1906 (HS 200)
- (D) Carl Eckmark Net House, 1906 (HS 195)
- (E) Sivertson Laundry, 1906 (HS 194)
- (F) J. Skadberg Residence/Cabin A, 1906 (HS 186)
- (G) Privy, ND (HS 186A)
- (H) Privy, 1910 (HS 194A)
- (I) Honeymoon Cottage, 1920 (HS 192)
- (J) A. Sivertson Residence, 1920 (HS 193)
- (K) Eckel Fish House, 1920 (HS 197)
- (L) Privy, 1920 (HS 200A)
- (M) Privy
- (N) Privy, ca. 1990 (HS 195A)
- (O) Privy, ca. 1990
- (P) Temporary Docks
- (Q) Former site of South Cottage
- (R) Singer Maintenance Docks
- (S) Radio Tower, 1910 (HS 186C)
- (T) Windmill present ca. 1950s-1970s

## Key

- Woodland
- Low Vegetation or Rocky Shore
- Mown Area
- Building
- Dock
- Trail
- Path Lined with Rock Edge

## Map Notes and Sources

Appraisal/Building Records, April 1953.  
Aerial Photography, 2009, NPS  
CLI Field Map, June 2000, by Roberta Young.  
Interviews with Betty Strom, Todd Strom, and  
Sandy Debolt, by Brenda Williams.  
Site Investigations, June 2010, by Brenda Williams  
and Mallory Scholl.  
Historic Photographs, ISRO Archives.  
Information about Windmill and trails to Sunset  
rock from Sandy Debolt, 2010.



QUINN EVANS  
ARCHITECTS



QUINN EVANS  
ARCHITECTS

Cultural Landscape Report & Environmental Assessment

Internal Planning Workshop ~ February 16, 2011

Sivertson fishery, ca. 1950



Source: ISRO archives

Fishermen arrive before ice break-up



Source: ISRO archives

## Washington & Barnum Islands

### Cultural Landscape Report & Environmental Assessment



QUINN EVANS  
ARCHITECTS

Internal Planning Workshop ~ February 16, 2011