

Rock Creek Park

ROCK CREEK PARK MULTI-USE TRAIL REHABILITATION

Washington, DC

ROCK CREEK PARK MULTI-USE TRAIL REHABILITATION

ENVIRONMENTAL ASSESSMENT AND
SECTION 106 EVALUATION
PUBLIC MEETING

WELCOME



<http://parkplanning.nps.gov/RockCreekTrailRehab/>

ROCK CREEK PARK MULTI-USE TRAIL REHABILITATION

TONIGHT'S MEETING

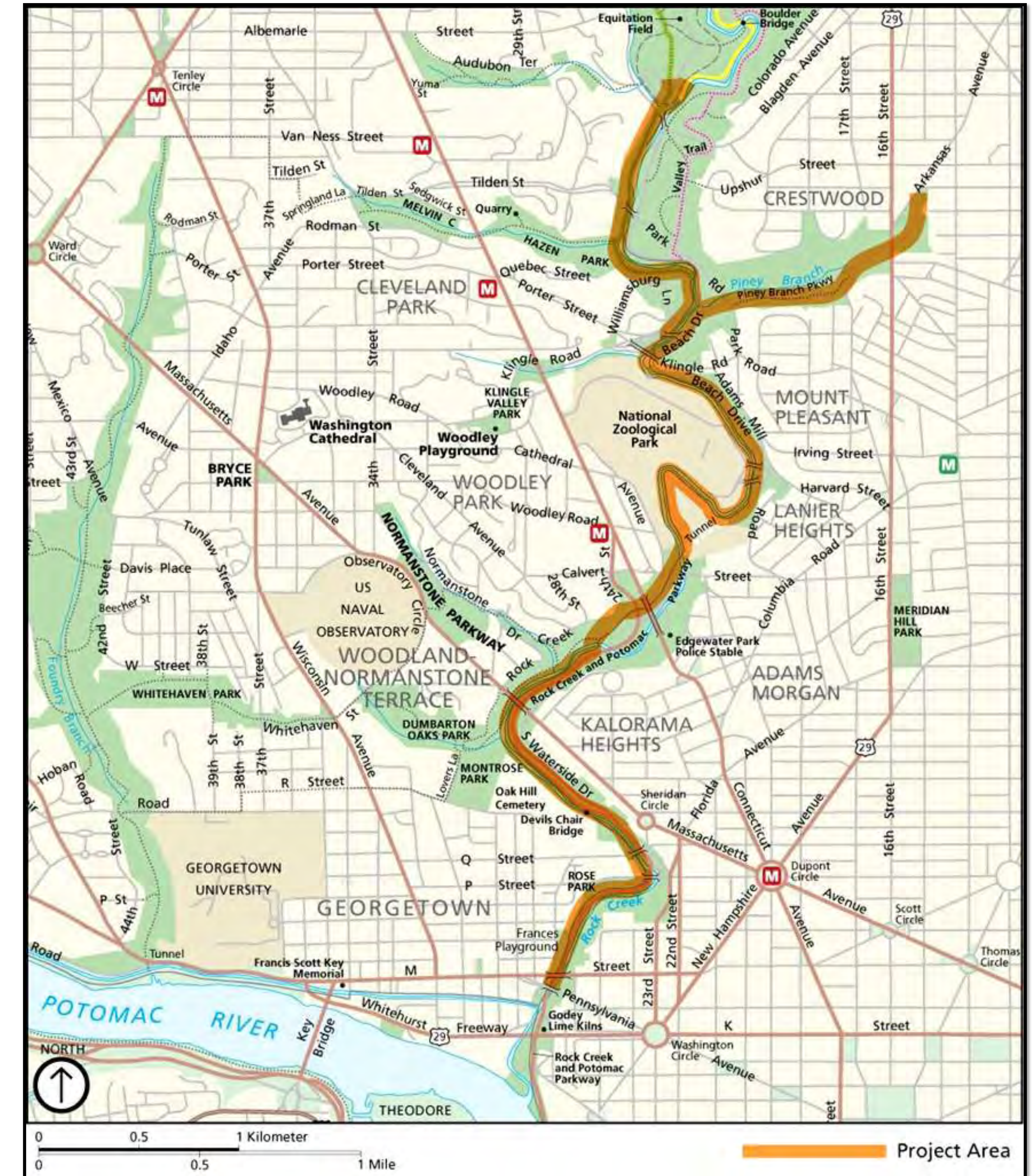
- ✓ The purpose of this meeting is to gather public input on the scope of the study, preliminary alternatives, and areas of concern.
- ✓ You are encouraged to provide your formal comments tonight by filling out a comment form or speaking at the microphone.
- ✓ This evening's meeting is an "Open House" during which you will be able to talk directly with members of the project team. An open microphone session will follow.

6:00 – 7:00 P.M. Open House

7:00 – 8:00 P.M. Open Microphone*

*Please register at the sign-in table if you wish to speak. Registration is first come, first served and time is limited to 2 minutes per speaker.

WE THANK YOU FOR YOUR PARTICIPATION IN THIS PROCESS.



DDOT, FHWA, and NPS are committed to ensuring that no person is excluded from participation in, or denied the benefits of their projects, programs, and services on the basis of race, color, national origin, or gender, as provided by Title VI of the Civil Rights Act of 1964 or on the basis of disability as provided by the Americans with Disabilities Act.



ROCK CREEK PARK MULTI-USE TRAIL REHABILITATION

Washington, DC

OPPORTUNITIES FOR PUBLIC COMMENT

Public Scoping Period – January 28 through February 28, 2011

Meeting #1: Scoping/Preliminary Alternatives – Tonight

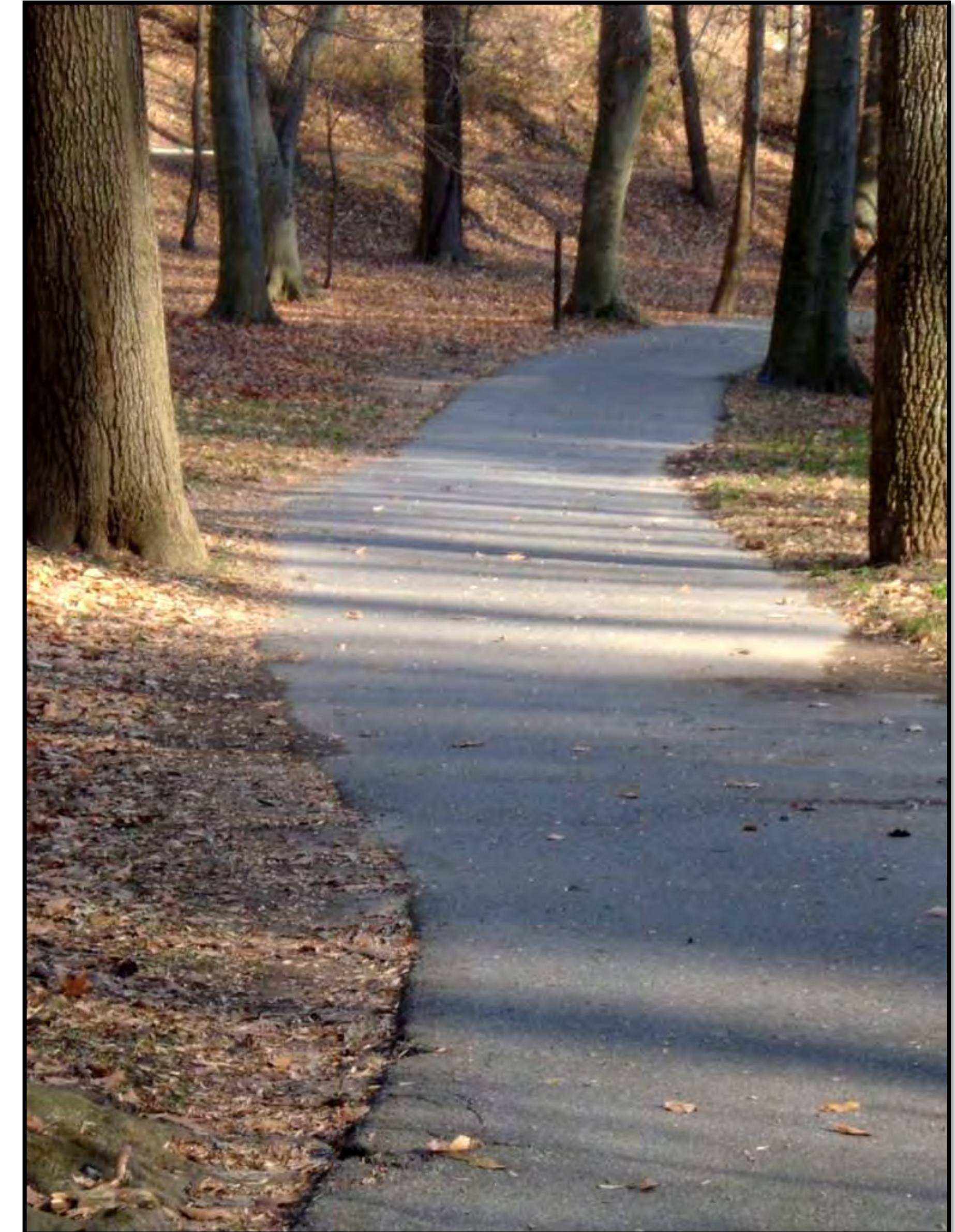
Meeting #2: Public Hearing on the EA – Summer 2011

HOW TO COMMENT

Tonight: Fill out a comment form, talk to a court reporter, or sign up to comment at the microphone.

Mail: District Department of Transportation
Planning, Policy, and Sustainability Administration
2000 14th Street NW, 7th Floor
Washington, DC 20009
Attention: Austina Casey

Online: <http://parkplanning.nps.gov/RockCreekTrailRehab/>



Comments must be received by
February 28, 2011
to receive consideration in the
Environmental Assessment and
Section 106 Evaluation.



ROCK CREEK PARK MULTI-USE TRAIL REHABILITATION

Washington, DC

PROJECT BACKGROUND

The National Park Service (NPS), in cooperation with the Federal Highway Administration (FHWA) and the District of Columbia Department of Transportation (DDOT), proposes to rehabilitate the Rock Creek Park multi-use trail including the following areas:

- ✓ 3.7 mile segment of the Rock Creek Park multi-use trail from Blagden Avenue, NW to P Street, NW;
- ✓ 0.8 mile segment of Piney Branch Parkway trail from Beach Drive to Arkansas Avenue, NW; and
- ✓ 0.5 mile segment of the Rose Park trail from P Street, NW to M Street, NW.

An Environmental Assessment is being prepared in accordance with the National Environmental Policy Act (NEPA), NPS Director's Order #12, and other applicable laws, regulations, and policies.

A Section 106 Evaluation is also being prepared in accordance with the National Historic Preservation Act (NHPA).

Rock Creek Park and the Rose Park trail are administered by NPS.

The project is being funded by FHWA and administered by DDOT.

NEPA was initiated for the proposed action in 2009. A scoping period was announced in March 2009, during which time agencies, stakeholders, and interested parties submitted comments.

Due to funding and other issues, the project was put on hold.

Funding again became available in November 2010, and the project was reinitiated.



ROCK CREEK PARK MULTI-USE TRAIL REHABILITATION

Washington, DC

PURPOSE AND NEED

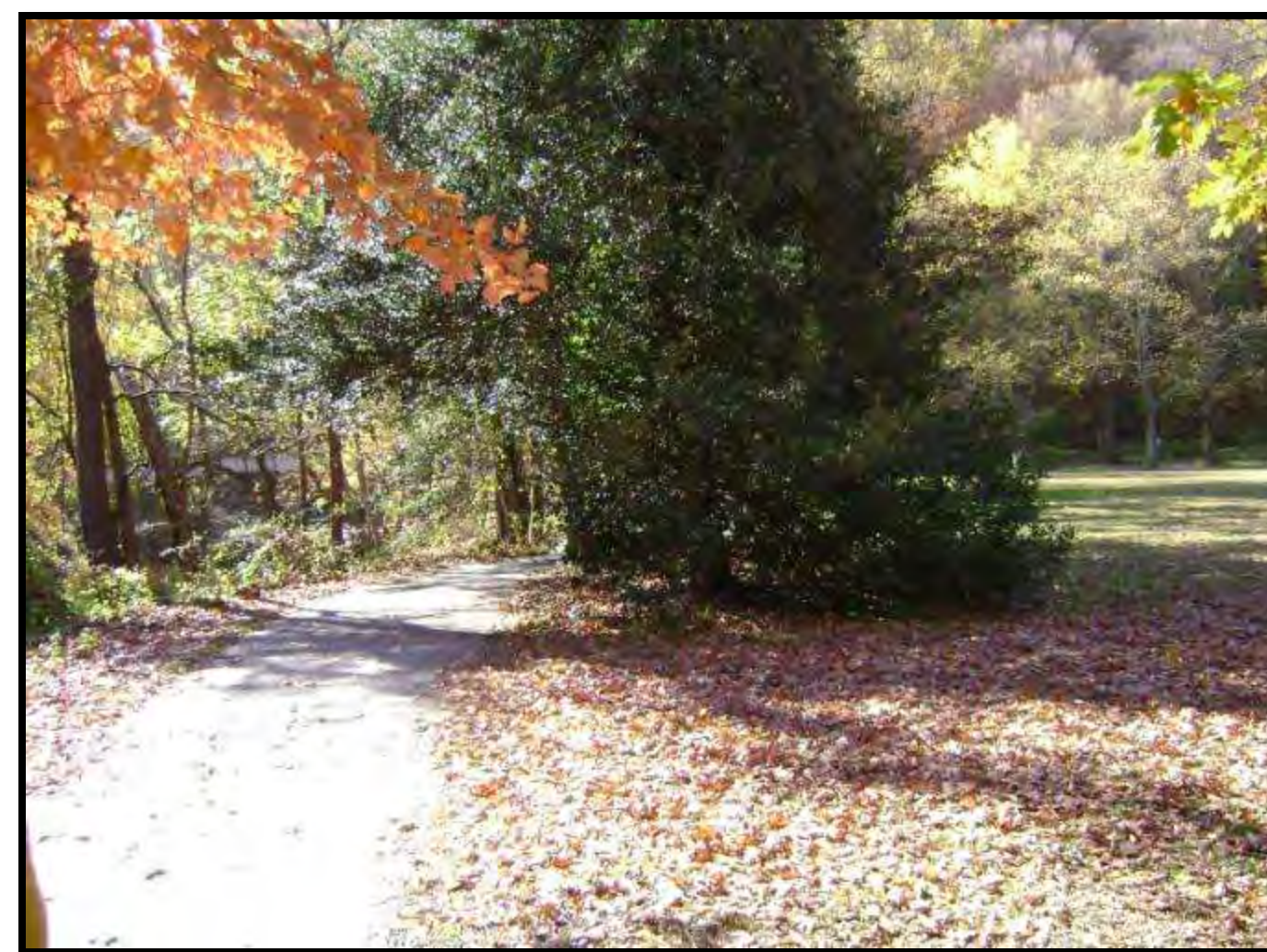
The purpose of this action is to improve the safety and connectivity of the deteriorating Rock Creek Park multi-use trail system in order to enhance visitor use and experience within Rock Creek Park.

The proposed action would result in:

- ✓ improved visitor safety and experience and protection of park resources;
- ✓ improved access to the Rock Creek Park multi-use trail system from other pedestrian and bicycle facilities, as well as the surrounding neighborhoods; and
- ✓ more effective drainage and erosion control, thereby reducing trail maintenance.

Specific issues creating the project needs include:

- ✓ **Safety** – deteriorated segments and current widths may not meet current safety standards.
- ✓ **Environmental Protection** – soil compaction/ erosion and vegetation damage in areas of pavement deterioration and along “social trails.”
- ✓ **System Connectivity** – pavement gaps in the current trail system, lack of access points to Rock Creek Park.
- ✓ **Visitor Use and Experience** – support of current diverse user groups including walkers, runners, bicyclists, those enjoying nature, etc.



ROCK CREEK PARK MULTI-USE TRAIL REHABILITATION

Washington, DC

NATIONAL ENVIRONMENTAL POLICY ACT (NEPA) PROCESS



NATIONAL HISTORIC PRESERVATION ACT (NHPA)



HISTORIC DISTRICTS

- ✓ Rock Creek Park
- ✓ Rock Creek and Potomac Parkway
- ✓ Georgetown

HISTORIC SITES

- ✓ Montrose Park
- ✓ National Zoological Park
- ✓ Oak Hill Cemetery

HISTORIC STRUCTURES

- ✓ Peirce Mill
- ✓ Connecticut Avenue Bridge
- ✓ Duke Ellington Bridge
- ✓ Dumbarton Bridge



Archeological resources are present throughout Rock Creek Park.

Section 106 of the NHPA requires consultation with the State Historic Preservation Office and other interested parties. An Assessment of Effects on Cultural Resources will be prepared and summarized in the Environmental Assessment.

Interested parties are invited to provide comments on historic preservation issues.



PRELIMINARY ALTERNATIVES AND OPTIONS

The following alternatives and options are under consideration for inclusion in the EA.

Rock Creek Park Multi-Use Trail Alternatives

Alternative 1: No Action

Alternative 2: Trail Resurfacing

Alternative 3: Trail Resurfacing and Widening

Peirce Mill Trail Spur Options

Option A: No Action

Option B: 8-10 Foot Paved Trail Spur

Rose Park Trail Options

Option A: No Action

Option B: 6 Foot Trail

Option C: 8 Foot Trail



ROCK CREEK PARK MULTI-USE TRAIL REHABILITATION

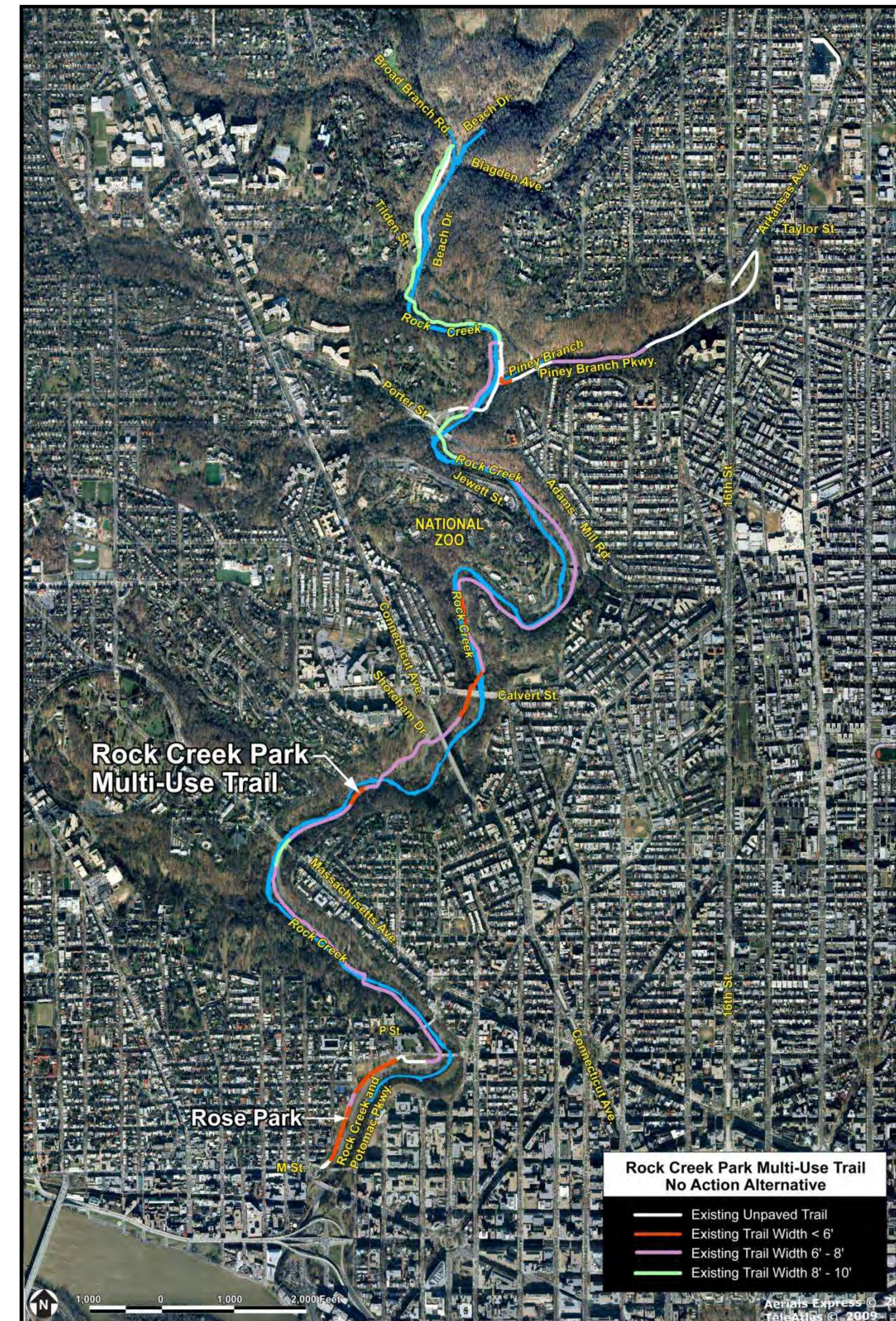
ALTERNATIVE 1: NO ACTION

Existing Conditions

- ✓ Rock Creek Park multi-use trail ranges from 6-10 feet in width. A number of “social trails” traverse areas that are currently unpaved.

No Action Alternative

- ✓ NPS would continue to maintain the existing trails with snow removal, spot improvements, etc., and no new construction would occur.



ACTIONS COMMON TO ALL BUILD ALTERNATIVES

New Connections

- ✓ Blagden Avenue
- ✓ Broad Branch Road
- ✓ Beach Drive
- ✓ Piney Branch Parkway trail
- ✓ Arkansas Avenue
- ✓ Porter Street ramp
- ✓ P Street (both sides of ramp)
- ✓ Rock Creek and Potomac Parkway trail
- ✓ Rose Park trail



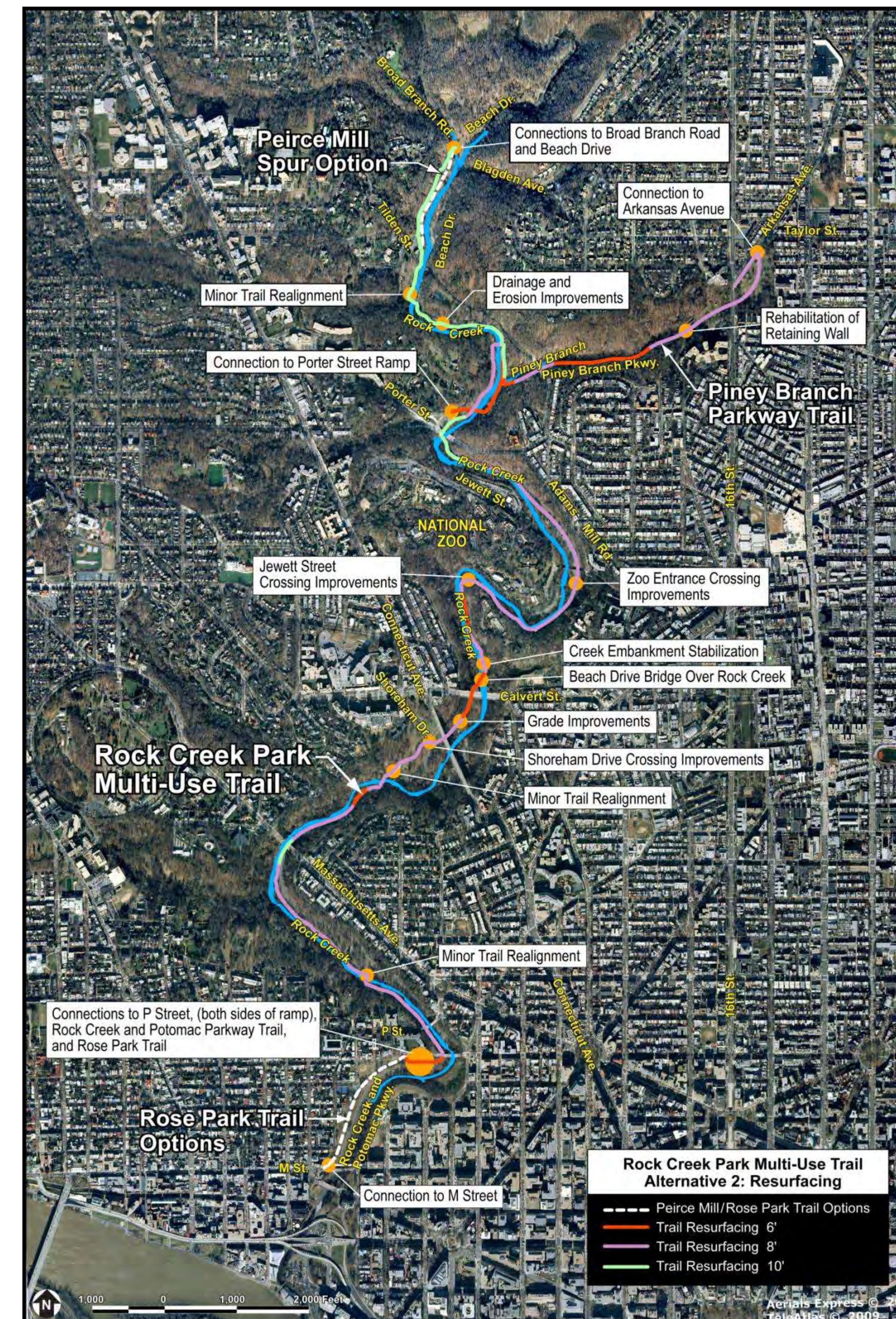
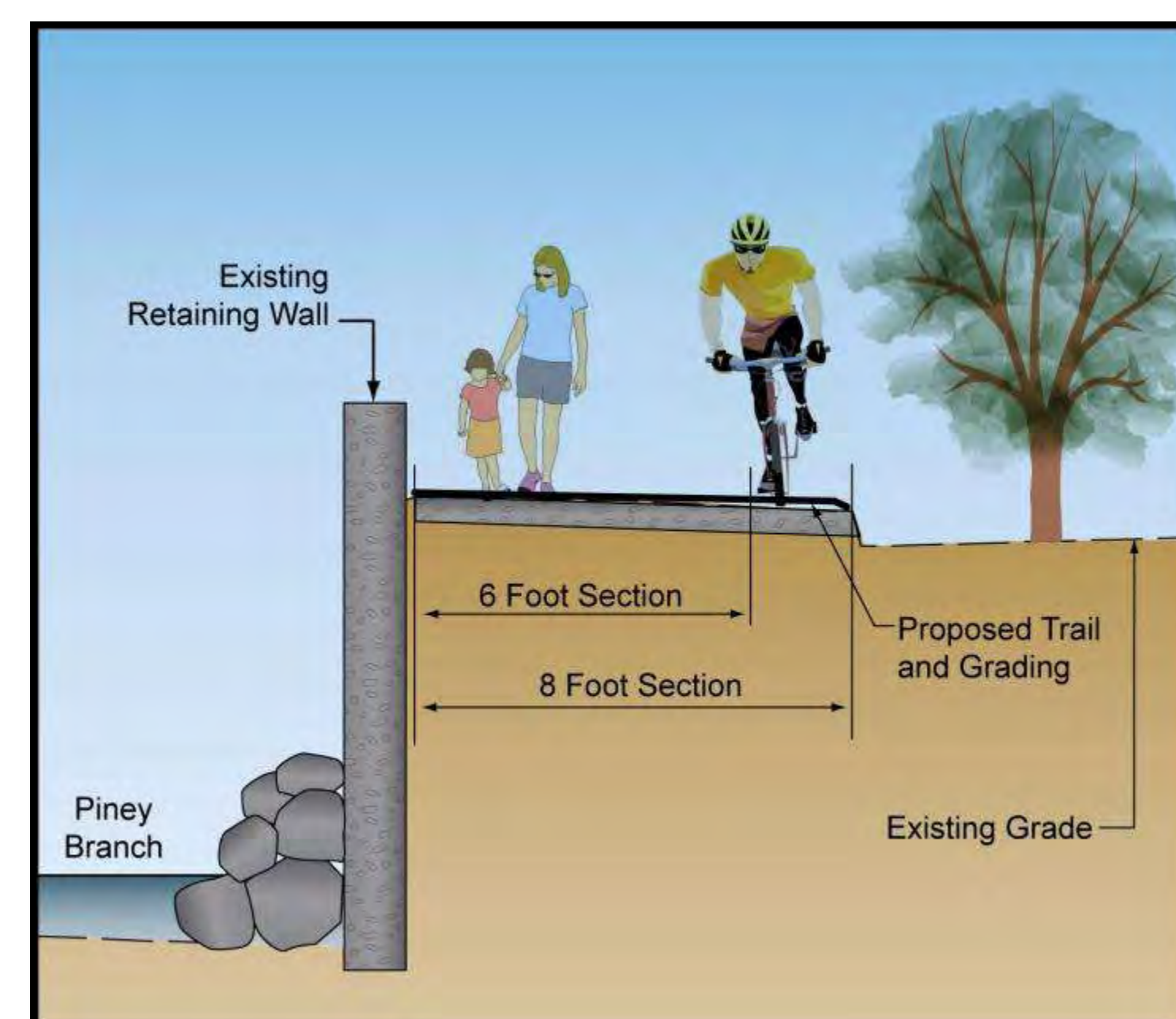
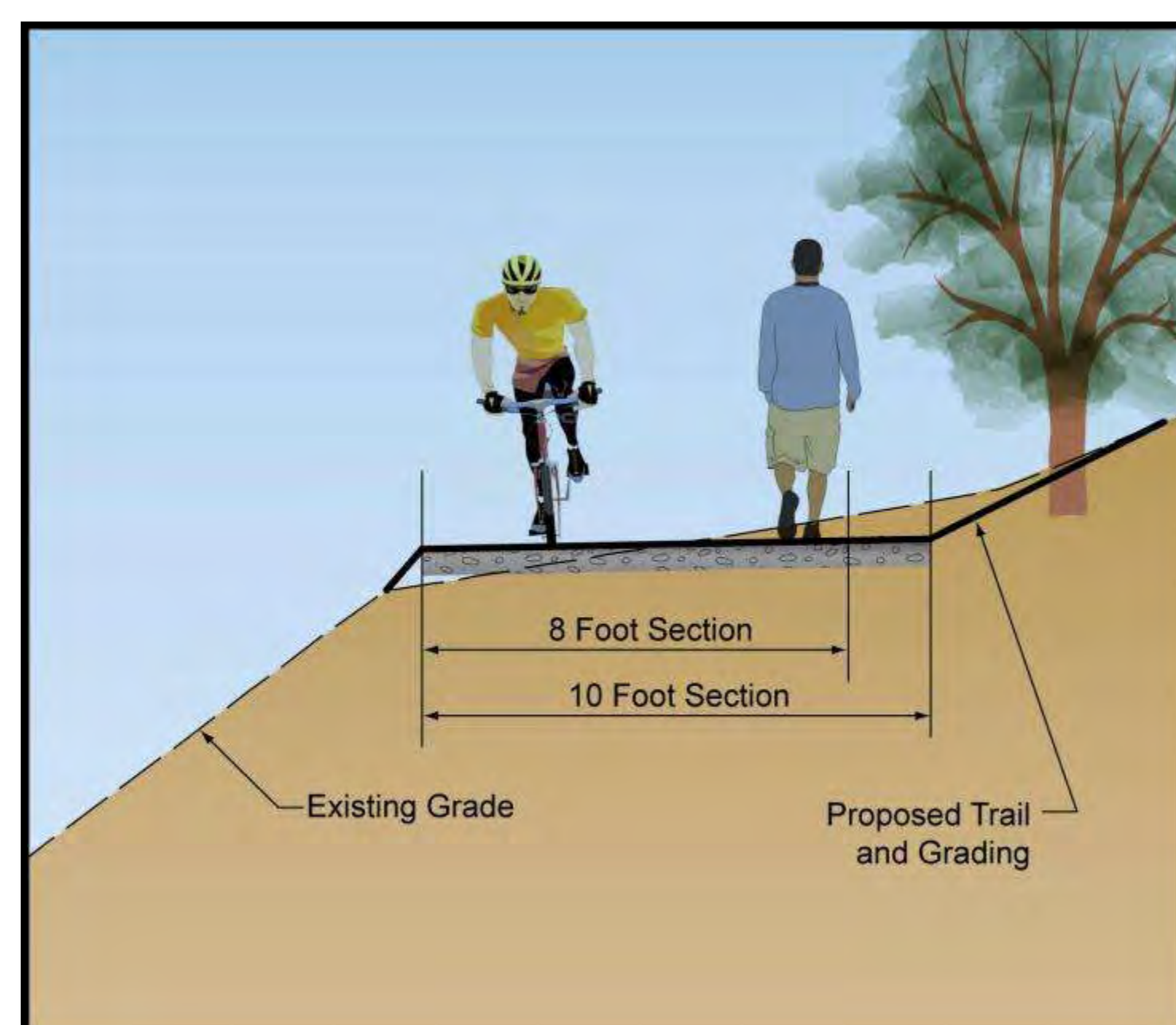
Spot Improvements

- ✓ Minor trail realignments at curves and approaches
- ✓ Roadway crossing safety improvements
- ✓ Improved crossing at Beach Drive bridge over Rock Creek (south of Zoo tunnel)
- ✓ Drainage and erosion control
- ✓ Grade improvements



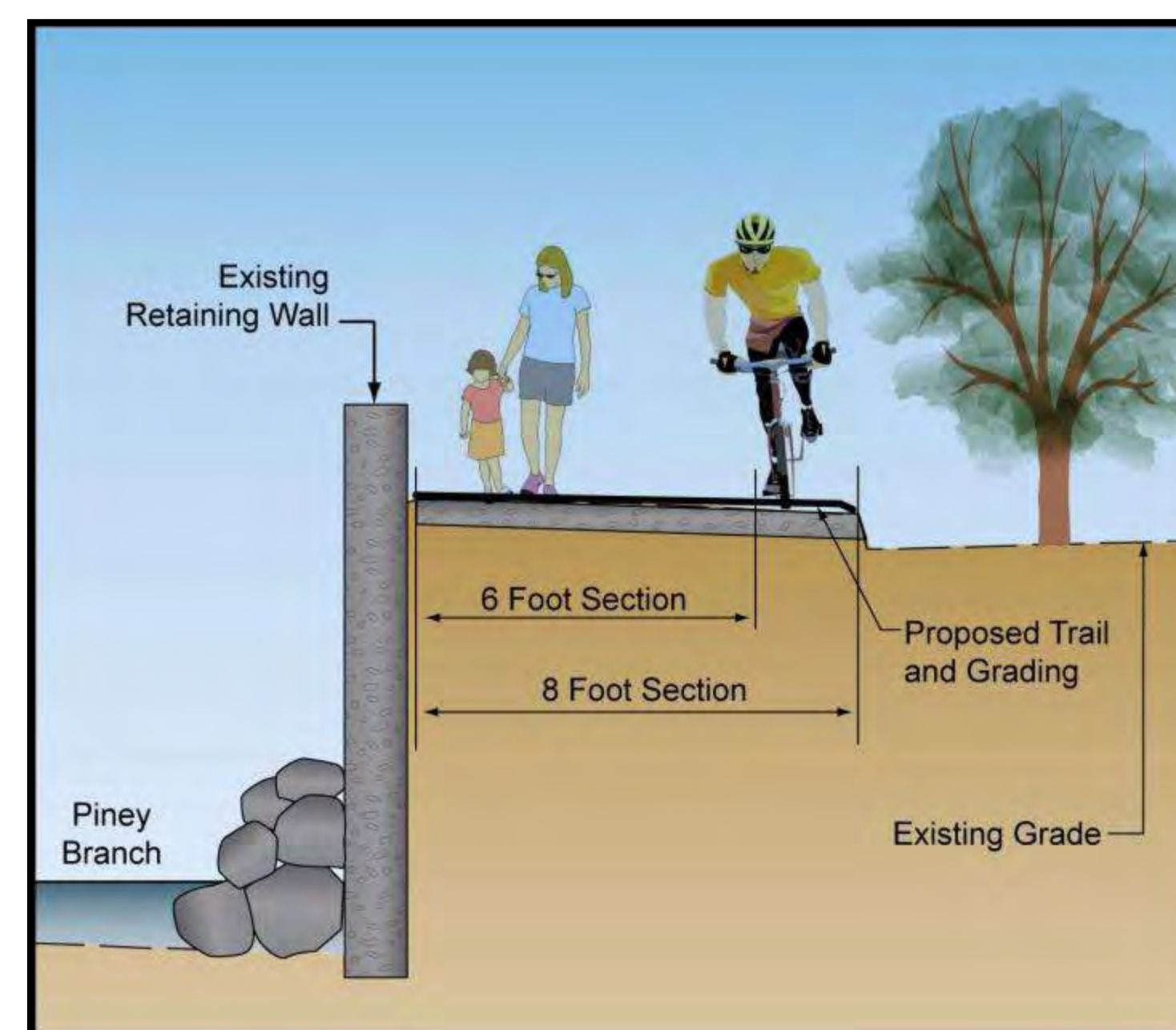
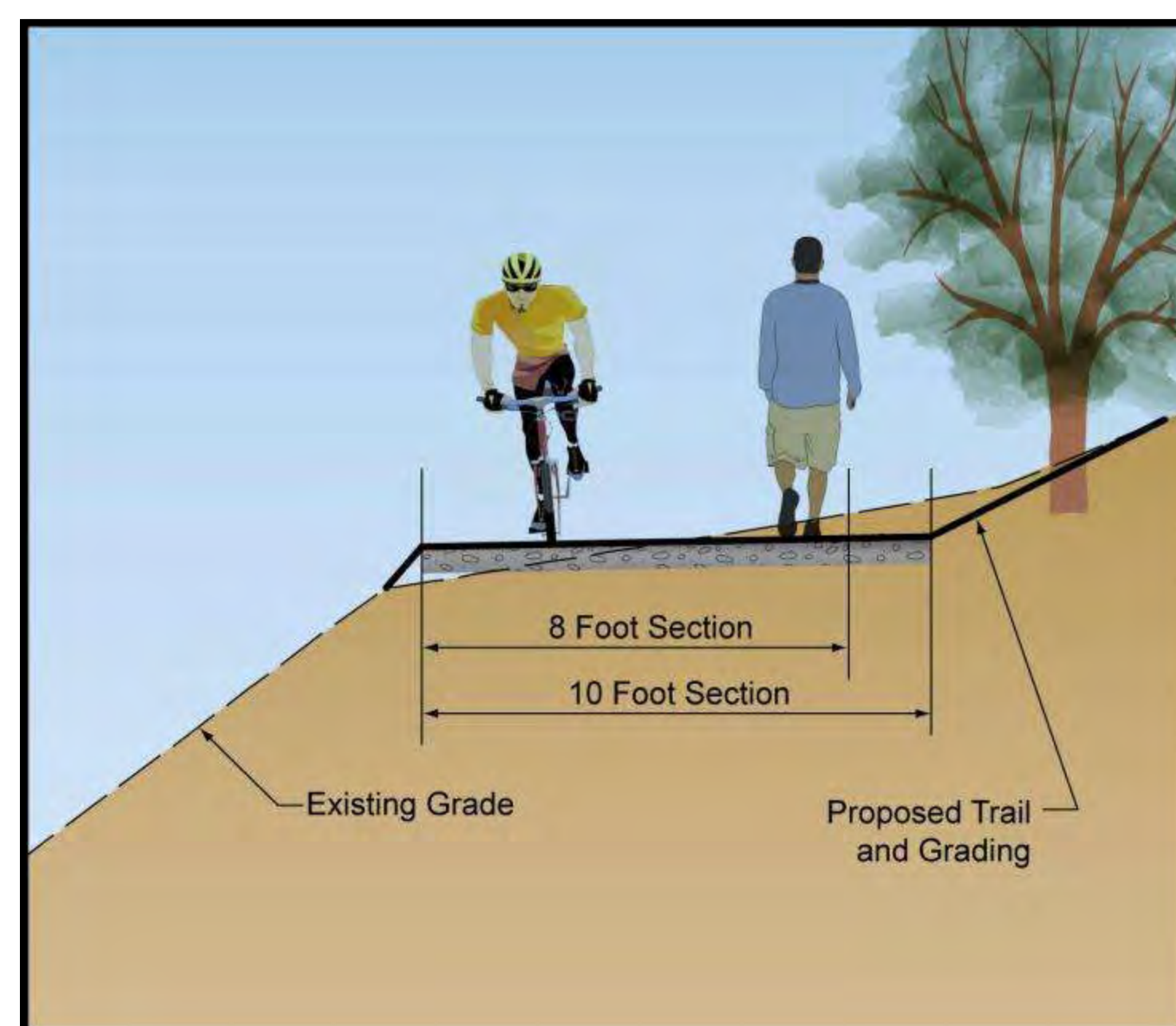
ALTERNATIVE 2: TRAIL RESURFACING

- ✓ In addition to spot improvements and new connections, the Rock Creek Park multi-use trail would be resurfaced at existing widths.
- ✓ The Piney Branch Parkway trail would be resurfaced to a varying width of 6-8 feet.



ALTERNATIVE 3: TRAIL RESURFACING AND WIDENING

- ✓ In addition to spot improvements and new connections, the Rock Creek Park multi-use trail would be resurfaced and widened to a minimum width of 6 feet and a maximum width of 10 feet, depending on environmental constraints.
- ✓ The Piney Branch Parkway trail would be resurfaced to a varying width of 6-8 feet.



ROCK CREEK PARK MULTI-USE TRAIL REHABILITATION

PEIRCE MILL TRAIL SPUR OPTIONS

Existing Conditions

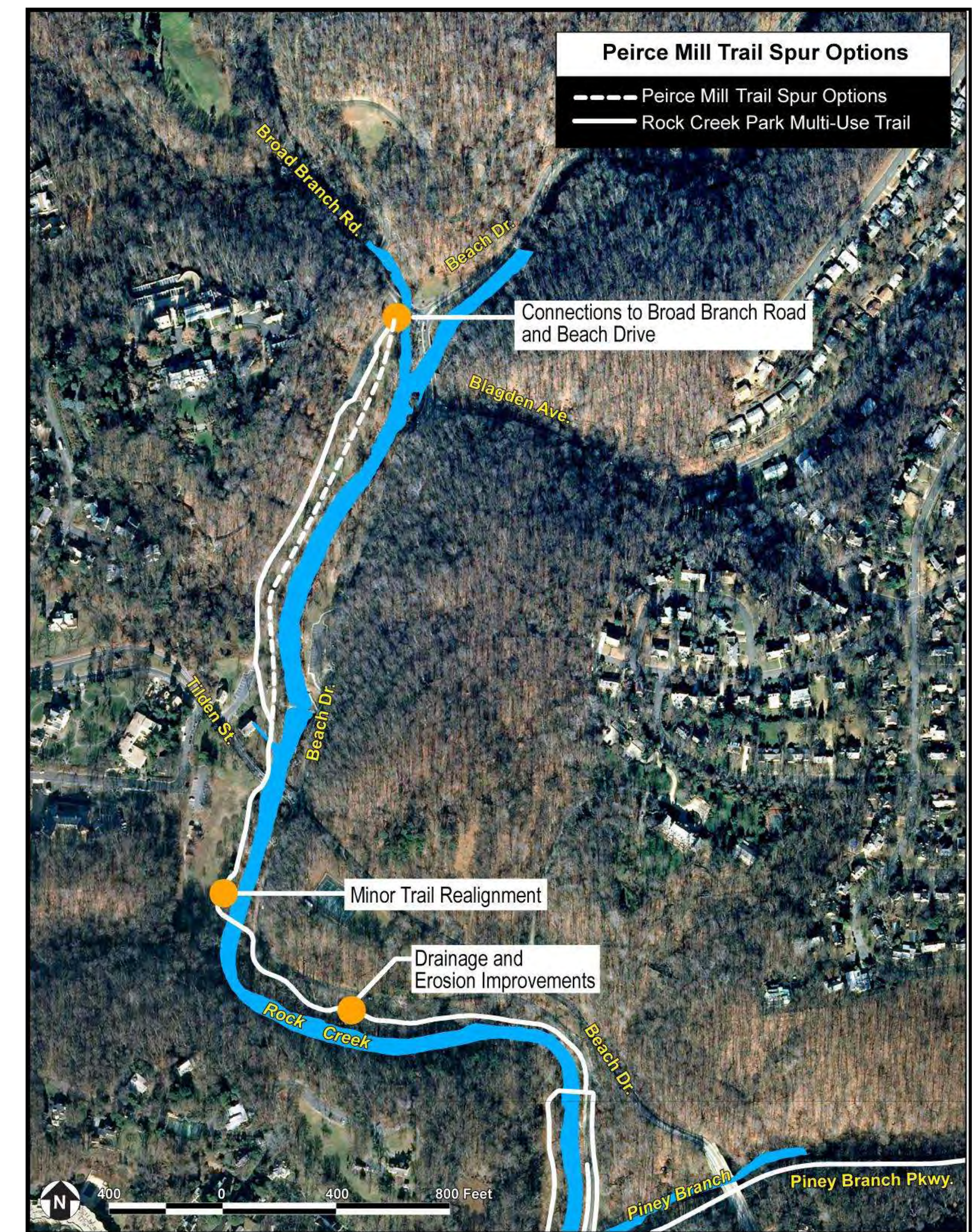
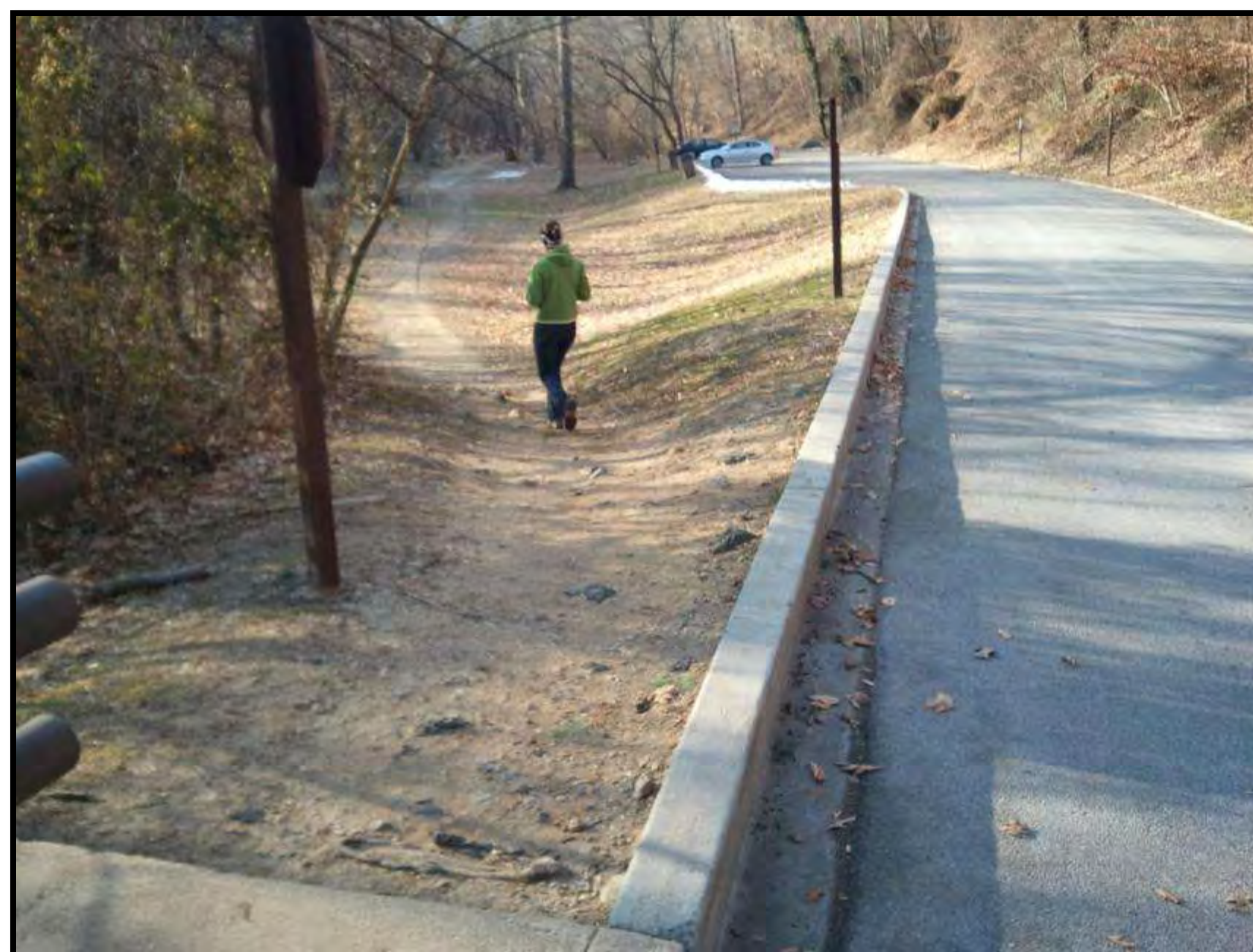
- ✓ An 8-10 foot wide “social trail” has been created by users along Rock Creek from Blagden Avenue to the Peirce Mill parking lot.

Option A: No Action

- ✓ The social trail would remain unchanged.

Option B: 8-10 Foot Paved Trail Spur

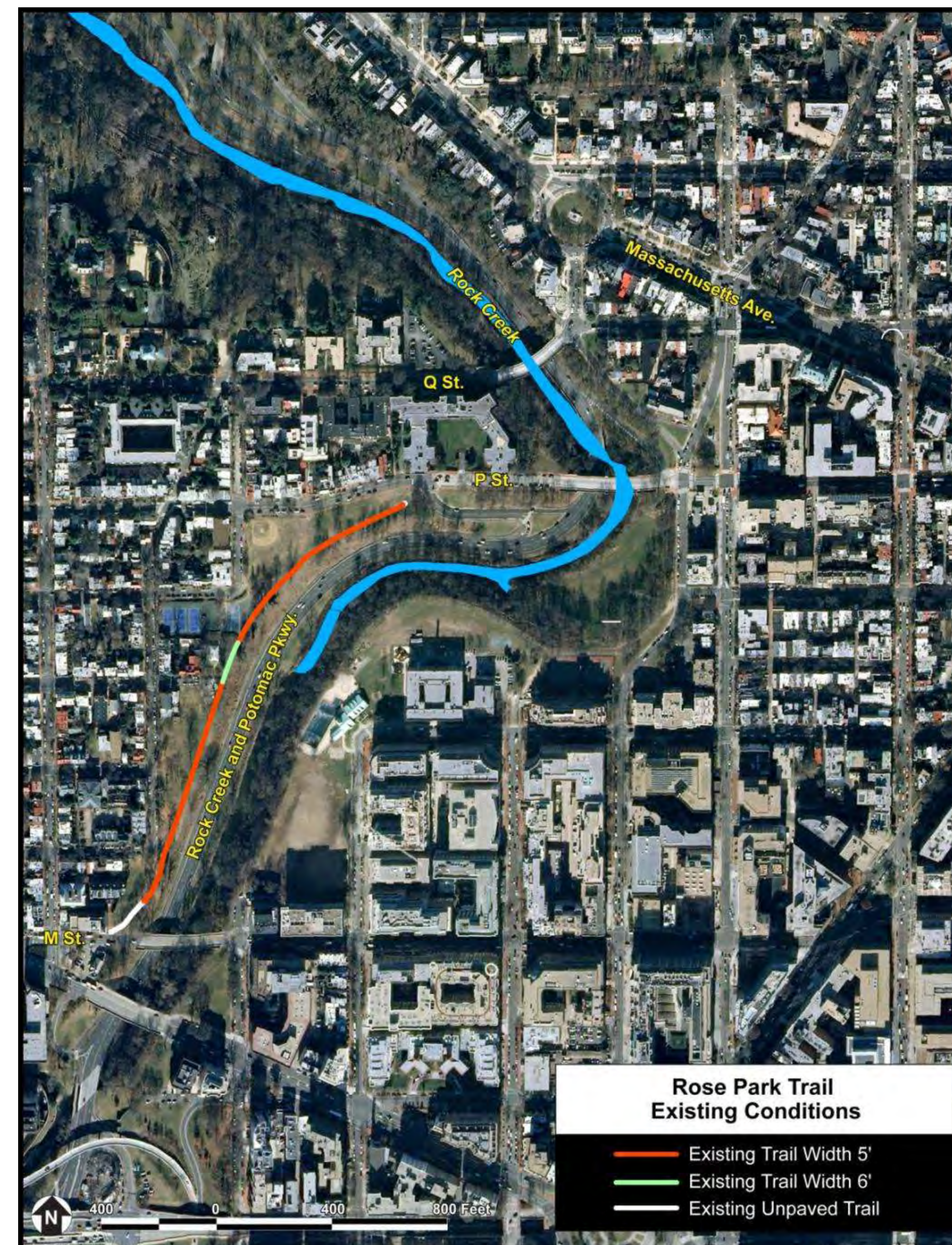
- ✓ The social trail would be resurfaced at its current location to a varying width of 8-10 feet.



ROSE PARK TRAIL OPTIONS

Existing Conditions

- ✓ Paved segments of the Rose Park trail between P Street, NW and M Street, NW vary in width from 5-6 feet.
- ✓ Unpaved “social trails” currently connect to and from P Street, NW to the north, and M Street, NW to the south.



Due to comments received during the 2009 and 2011 scoping periods, improvements to the Rose Park trail will be evaluated under separate options in the EA.

ROSE PARK TRAIL OPTIONS

Option A: No Action

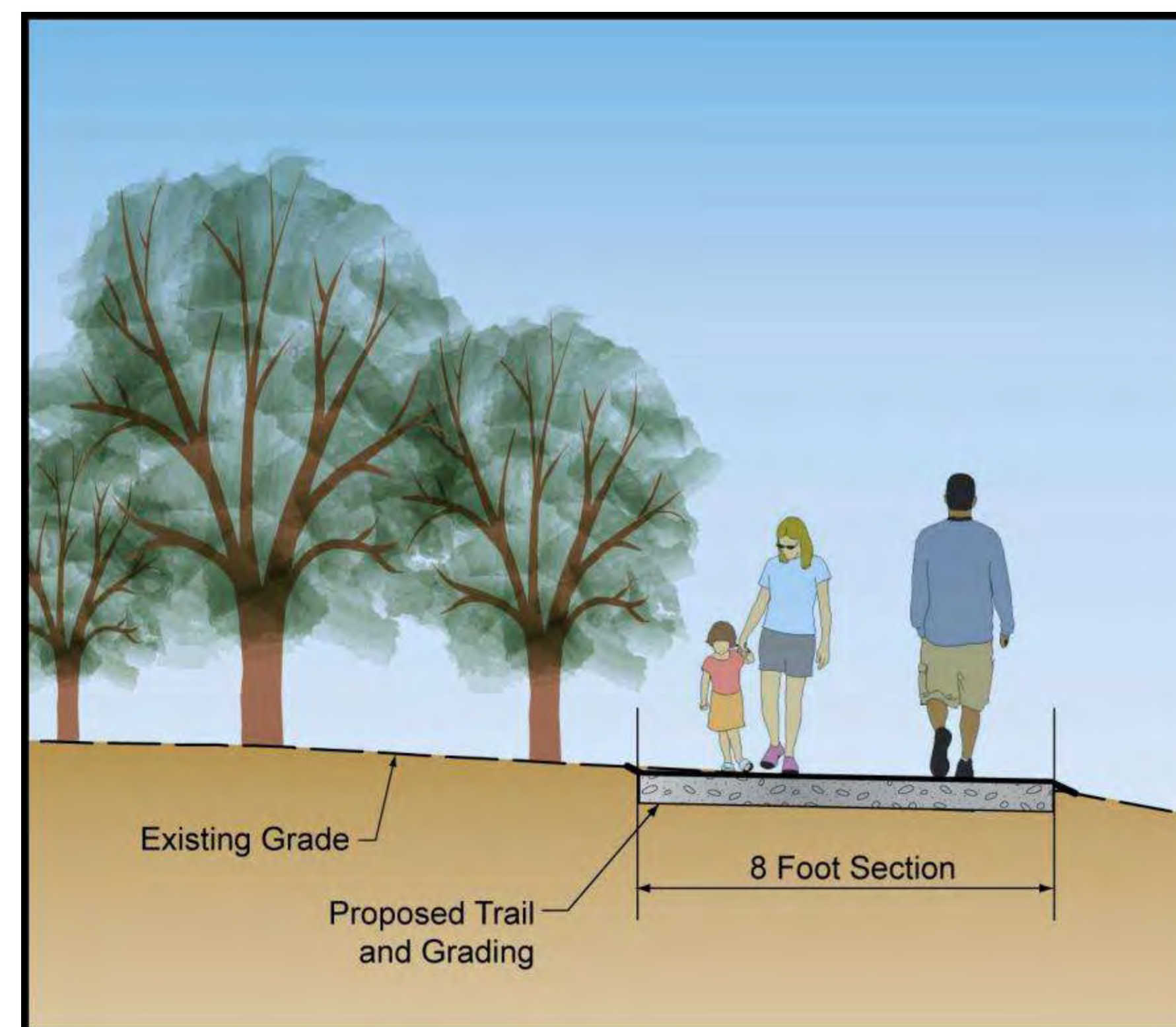
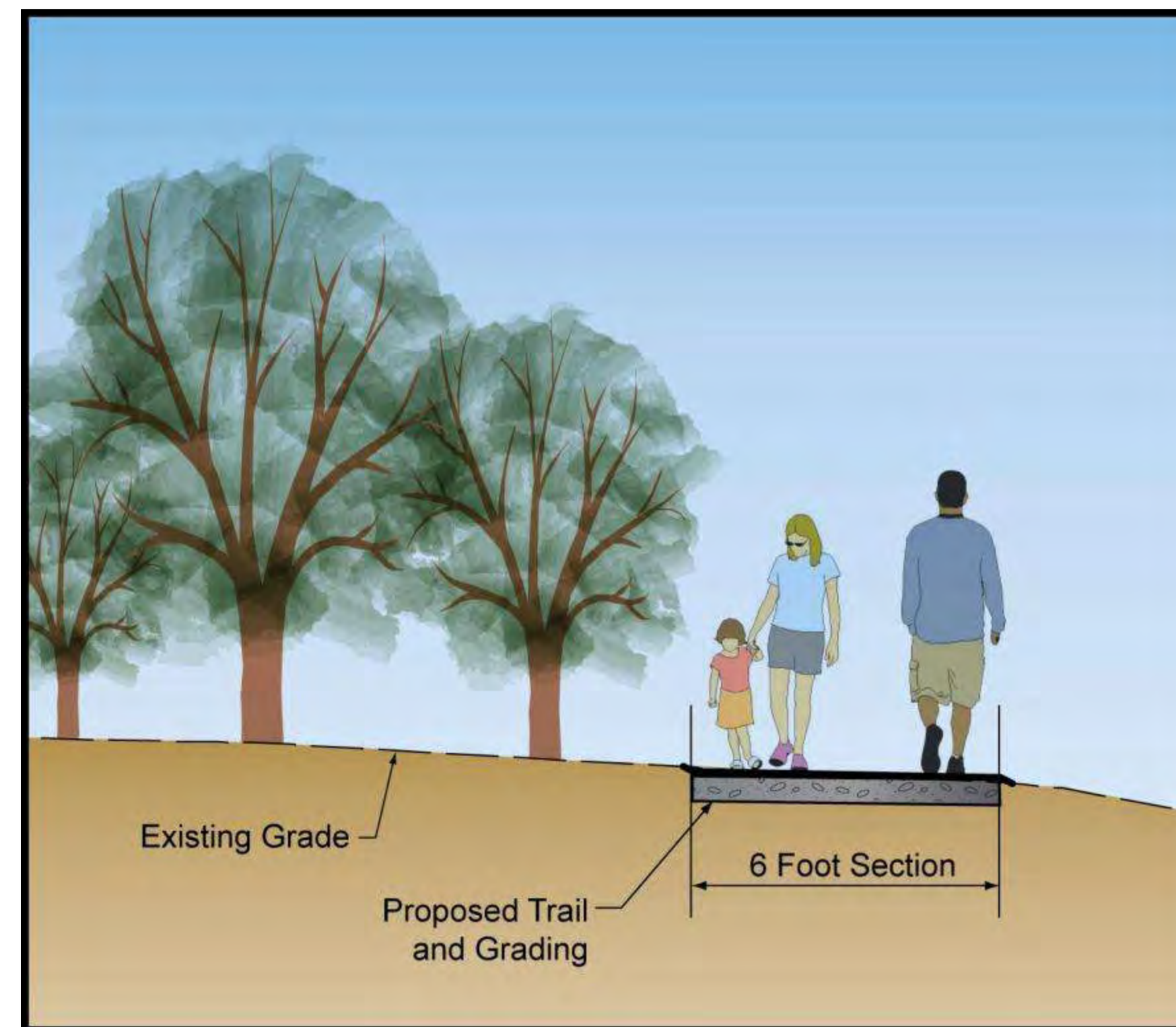
- ✓ Rose Park trail would continue to be maintained by NPS.

Option B: 6 Foot Trail

- ✓ Rose Park trail would be resurfaced at its current alignment to a standard width of 6 feet.
- ✓ Improved connections to P Street, NW and M Street, NW.

Option C: 8 Foot Trail

- ✓ Rose Park trail would be resurfaced at its current alignment to a standard width of 8 feet.
- ✓ Improved connections to P Street, NW and M Street, NW.



ROCK CREEK PARK MULTI-USE TRAIL REHABILITATION

Washington, DC

SCHEDULE/NEXT STEPS:

Project Milestone	Date
Project Initiation	November 2010
Public/Agency Scoping Period	January – February 2011
Agency Scoping Meeting	February 15, 2011
Public Meeting #1 – Public Scoping/ Preliminary Alternatives	February 23, 2011
Notice of Availability of the Environmental Assessment	Late Spring 2011
Public Meeting #2 – Public Hearing for the Environmental Assessment	Summer 2011
Finding of No Significant Impact (if applicable)	Fall 2011

