

Graveyard Fields Project

awv 06/08/2020 (modified 11/16/20)

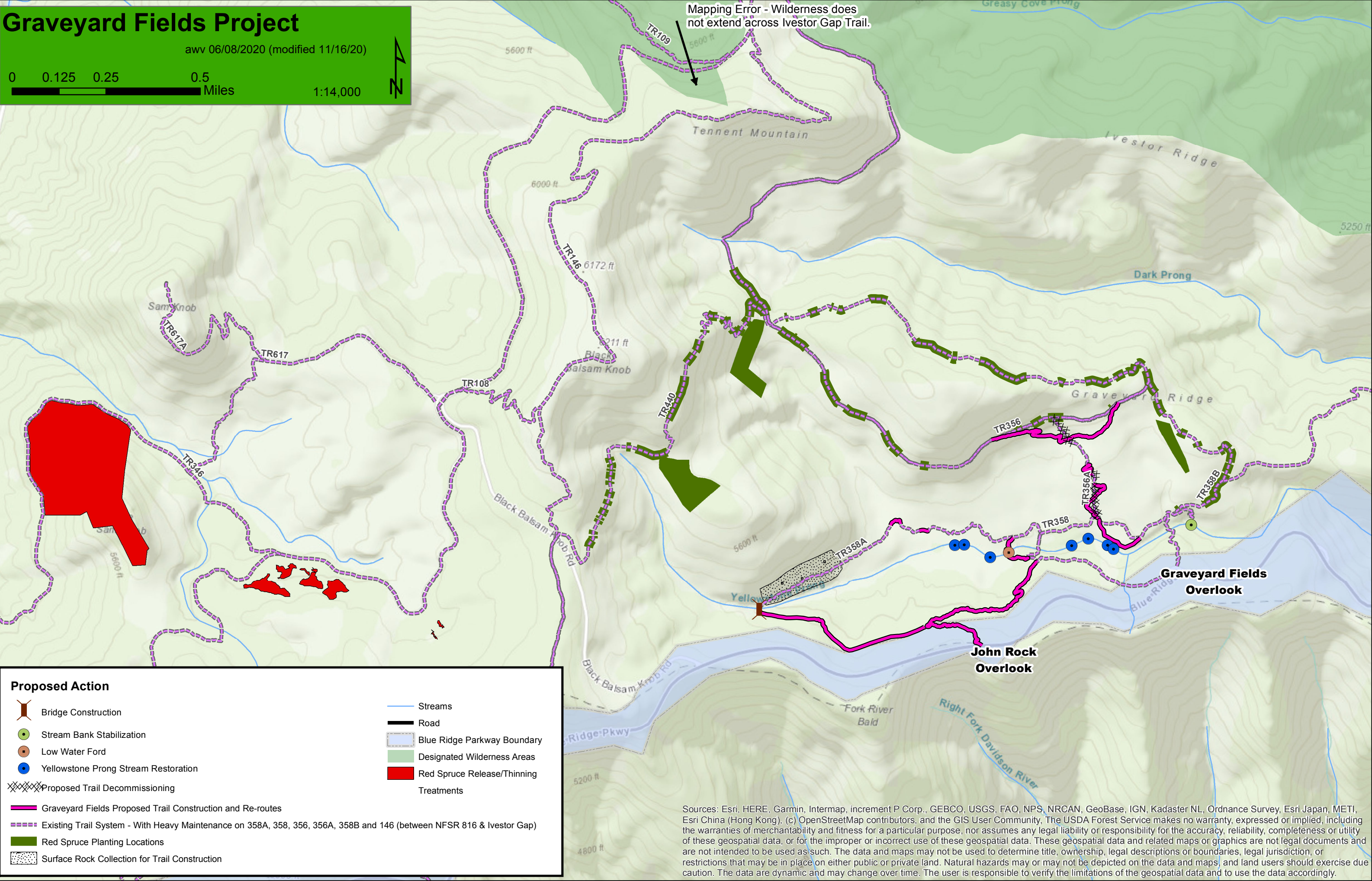
00.1250.250.5

Miles

1:14,000

N

Z



Mapping Error - Wilderness does not extend across Investor Gap Trail.

Proposed Action

- Bridge Construction
- Stream Bank Stabilization
- Low Water Ford
- Yellowstone Prong Stream Restoration
- Proposed Trail Decommissioning
- Graveyard Fields Proposed Trail Construction and Re-routes
- Existing Trail System - With Heavy Maintenance on 358A, 358, 356, 356A, 358B and 146 (between NFSR 816 & Investor Gap)
- Red Spruce Planting Locations
- Surface Rock Collection for Trail Construction
- Streams
- Road
- Blue Ridge Parkway Boundary
- Designated Wilderness Areas
- Red Spruce Release/Thinning Treatments

Sources: Esri, HERE, Garmin, Intermap, increment P Corp., GEBCO, USGS, FAO, NPS, NRCAN, GeoBase, IGN, Kadaster NL, Ordnance Survey, Esri Japan, METI, Esri China (Hong Kong), (c) OpenStreetMap contributors, and the GIS User Community, The USDA Forest Service makes no warranty, expressed or implied, including the warranties of merchantability and fitness for a particular purpose, nor assumes any legal liability or responsibility for the accuracy, reliability, completeness or utility of these geospatial data, or for the improper or incorrect use of these geospatial data. These geospatial data and related maps or graphics are not legal documents and are not intended to be used as such. The data and maps may not be used to determine title, ownership, legal descriptions or boundaries, legal jurisdiction, or restrictions that may be in place on either public or private land. Natural hazards may or may not be depicted on the data and maps, and land users should exercise due caution. The data are dynamic and may change over time. The user is responsible to verify the limitations of the geospatial data and to use the data accordingly.