

Appendix C

Scoping Summary and
Comment Analysis Report

National Park Service
U.S. Department of the Interior

Hawai'i Volcanoes National Park
May 2022
INTERNAL PRELIMINARY DRAFT



Hawai'i Volcanoes Disaster Recovery Project

Scoping Summary and Comment Analysis Report



Photograph credits: Left – NPS photo by J. Ferracane; Top Right – USGS photo; Bottom Right – USGS photo.

THIS PAGE INTENTIONALLY LEFT BLANK.

Contents

1	Introduction.....	1
1.1	Scoping.....	1
1.1.1	Agency Outreach.....	2
1.1.2	Kūpuna Outreach.....	2
1.1.3	News Release and Planning, Environment and Public Comment Website.....	2
1.2	Summary of Public Participation During Scoping.....	2
2	The Comment Analysis Process.....	4
2.1	Definition of Terms.....	4
2.2	Guide to this Document.....	4
3	Content Analysis.....	5
4	Scoping Comment Summary.....	7
4.1	General Alternative Suggestions.....	7
4.1.1	Concern Statement: Increase Picnic Spaces.....	7
4.1.2	Concern Statement: Designated Bike Lanes.....	7
4.1.3	Concern Statement: Alternate Location for USGS Building.....	7
4.2	Alternative Uses for Buildings.....	7
4.2.1	Concern Statement: Retrofit Existing Buildings.....	7
4.3	Alternative Trails Suggestions.....	8
4.3.1	Concern Statement: Ideas to Improve Trails.....	8
4.4	Alternative Transportation.....	8
4.4.1	Concern Statement: Ideas to Improve Alternative Transportation.....	8
4.5	Cultural Concerns.....	9
4.5.1	Concern Statement: Protect Sacred Spaces.....	9
4.6	Concern Statement: Project Cost Concerns.....	9
4.7	Education and Interpretation.....	9
4.7.1	Concern Statement: Education and Interpretation.....	9
4.8	General Project Support.....	10
4.8.1	Concern Statement: General Project Support.....	10
4.9	Natural Resource Concerns.....	10
4.9.1	Concern Statement: Expansion Impacts ‘Ōhi‘a.....	10
4.9.2	Concern Statement: Use native plants.....	10
4.10	Pedestrian Safety and Access.....	11
4.10.1	Concern Statement: Safe Access for Pedestrians.....	11
4.11	Parking Increased.....	11
4.11.1	Concern Statement: More Parking Space.....	11
4.12	Park Entrance, Vehicle Access, and Traffic Flow.....	11
4.12.1	Concern Statement: Roundabouts Cause Confusion and Congestion.....	11
4.12.2	Concern Statement: Roundabouts will Improve Safety.....	12

4.13	Sustainability.....	12
4.13.1	Concern Statement: Sustainability	12
4.14	Visitor Experience	12
4.14.1	Concern Statement: Increase facilities for visitors	12
4.15	Visual Impacts	13
4.15.1	Concern Statement: Visual Impacts.....	13
4.15.2	Concern Statement: Visual Impacts and Landscape Preservation.....	13

List of Tables

Table 1:	Comment Distribution by Code	5
Table 2:	Correspondence Signature Count by Organization Type	6
Table 3:	Correspondence Distribution by Correspondence Type.....	6
Table 4:	Correspondence Distribution by State.....	6
Table 5:	Correspondence Distribution by Country.....	6

List of Appendices

Appendix A – Correspondence Index of Organizations
Appendix B – Correspondence Index by Code
Appendix C – Materials Provided During Scoping

1 INTRODUCTION

Hawai'i Volcanoes National Park (Hawai'i Volcanoes) and the U.S. Geological Survey (USGS) led a civic engagement process from May 15 to June 15, 2020, to seek community input to consider and refine four initial design concepts for the proposed Hawai'i Volcanoes Disaster Recovery Project. A total of 159 pieces of correspondence from 9 states were received during the civic engagement comment period. The National Park Service (NPS) and USGS used the public and agency feedback received to evaluate the design concepts and determine which concept; or variation of concepts, will be evaluated as the proposed action during the National Environmental Policy Act (NEPA) process. The proposed action (summarized in Appendix C) that was presented to the public was the result of this evaluation.

The intent of the project is to repair and/or replace critical park infrastructure and USGS-operated facilities and equipment damaged during the 2018 eruption and summit collapse of Kīlauea volcano. The project addresses potential future use of the Uēkahuna Bluff area and other park sites. Uēkahuna Bluff is an area of geologic, natural, and cultural significance and is regarded as sacred by Native Hawaiians and other groups.

Beginning in May 2018, the park and Kīlauea summit underwent a major change as magma drained from the chamber beneath Halema'uma'u Crater, and the caldera began to collapse, triggering 60,000 earthquakes and clouds of rock and ash that continued until early August. The seismic activity was primarily centered near the crater, and significantly impacted buildings in the immediate vicinity on Uēkahuna Bluff, including Jaggar Museum and the USGS Hawaiian Volcano Observatory (HVO)–operated Reginald T. Okamura facility and equipment, resulting in the closure of the area. The 2018 eruption and caldera collapse were the most destructive eruptive events in Hawai'i in the last two centuries.

The results of an initial post-disaster assessment conducted in October 2018 found that significant investment would be necessary to make Jaggar Museum and the USGS HVO–operated Reginald T. Okamura building safe to occupy and operational. Most importantly, the buildings are surrounded by fault lines and the area continues to subside on the crater side, undermining slope stability at the existing terraces and building foundations.

The focus of this planning effort is the repair, replacement, removal, or relocation of the facilities and functions that were damaged at Uēkahuna Bluff. The proposed action presents potential solutions to the loss of function at Uēkahuna Bluff and current overcrowding at Kīlauea Visitor Center (KVC), ranging from renovation of existing buildings to constructing new facilities elsewhere in the park.

1.1 Scoping

To slow the spread of COVID-19, scoping was conducted using as many methods as possible to allow public comment, but without the use of in-person meetings. Comments on the project were accepted starting February 9, 2022, and the comment period ended March 11, 2022. The National Park Service also implemented a dedicated phone line specifically to receive comments, request hard copies of the materials, or request a call back.

The National Park Service and the USGS will incorporate comments made during the scoping period to develop an Environmental Assessment disclosing the potential impacts from the proposed project.

1.1.1 Agency Outreach

On February 9, 2022, the National Park Service distributed letters to various agencies to invite agency participation in the civic engagement process. Agencies were encouraged to submit written suggestions, comments, and concerns regarding the project either online at the National Park Service's Planning, Environment and Public Comment (PEPC) website or by U.S. mail to the Office of the Superintendent.

1.1.2 Kūpuna Outreach

On February 9, 2022, the National Park Service distributed scoping letters via email and hard copy materials to the Kūpuna consultation group. The National Park Service held a consultation group meeting on February 25, 2022, with a focus on the Disaster Recovery project.

1.1.3 News Release and Planning, Environment and Public Comment Website

On February 9, 2022, the National Park Service issued a news release to area wide news organizations and posted project information including the public scoping letter and story map explaining the project to the PEPC website. The news release and PEPC website provided a project overview and invited the public to participate in the civic engagement process. Members of the public were invited to submit comments on the project through the PEPC website, U.S. mail, email, or via the project phone line. The materials that were distributed to the public can be found in Appendix C.

In addition to these outreach efforts, the news release was posted on social media, and the National Park Service posted reminders about the comment period to encourage participation. The Hawai'i Volcanoes Public Affairs Specialist and USGS HVO Scientist-in-Charge were interviewed by several local news outlets about the scope of the project.

1.2 Summary of Public Participation During Scoping

Sixty-two pieces of correspondence from nine states were received during the civic engagement comment period. Individuals living in Hawai'i submitted 50 (approximately 80%) of those correspondences. The majority of comments received during this period expressed the following:

- Commenters stated they are excited about the updated facilities for the park and are pleased with how the parks have incorporated public comments so far.
- Commenters also expressed general support for the roundabout.
- Commenters also stated opinions that the roundabout is dangerous because they are not commonly used on the island. There is concern that more accidents will occur, and that the new roundabout will not reduce traffic issues.
- Commenters expressed concerns that the park entrance updates will increase traffic to the park and suggested alternate transportation to the park (including shuttles and bikes) instead of allowing more vehicles and parking.
- Commenters requested making the roads safer for bikes and pedestrians.
- Commenters expressed concern that new buildings, roads, and potential parking will cause a loss of 'ōhi'a trees.
- Commentors requested the reuse of materials of buildings and old building footprints.

- Commenters provided suggestions to create bike paths, electric vehicle chargers, and better trail connections throughout the park.
- Commenters requested a structure to protect visitors from inclement weather at Uēkahuna Bluff.
- Commenters provided alternative solutions for buildings to reduce the footprint and reduce bulldozing of natural spaces.
- Commenters requested better signage for bathrooms, attractions, and building locations.

2 THE COMMENT ANALYSIS PROCESS

2.1 Definition of Terms

Primary terms used in the document are defined below:

Correspondence: A correspondence is the entire document received from the public—including individuals, organizations, government officials, and agency representatives. It can be in the form of a letter, comment card, or PEPC website comment form.

Comment: A comment is a portion of the text within a correspondence that addresses a single subject. It could include such information as an expression of support or opposition to a proposed activity, additional data regarding the existing condition, an opinion questioning a matter of policy, or an opinion regarding the adequacy of an analysis.

Code: A code is a grouping centered on a common topic or subject matter with which the public is concerned.

Concern Statement: Concern statements were developed to summarize the multiple issues represented by the comments.

2.2 Guide to this Document

This report is organized as follows:

Content Analysis Report – This is the basic report produced from the PEPC website that provides information on the numbers and types of comments received, organized by code.

Civic Engagement Comment Summary – This report summarizes the substantive comments received during civic engagement. These comments are organized by codes and further organized into concern statements. Comment text is presented as submitted, which can include spelling errors. This text has not been edited.

Correspondence Index of Organizations (Appendix A) – This list identifies the commenters or authors by organization type.

Index by Code (Appendix B) – This list identifies the commenters or authors who commented on the listed topics, as identified by the codes used in this analysis.

3 CONTENT ANALYSIS

The National Park Service will use public and agency feedback to evaluate the proposed project that will be evaluated as the proposed action during the NEPA process. This report summarizes approximately 185 comments taken from 62 public correspondences received during scoping. Comments were categorized into 38 topics identified by unique codes. For the purpose of this report, all comments relevant to the proposed design concepts were coded.

The distribution of comments by code is provided in **Table 1**.

TABLE 1: COMMENT DISTRIBUTION BY CODE

Code	Description	No. of Comments	Percent of all Comments
AL100	Alternative Suggestions	37	20.0
GNC100	General Project Concerns	29	15.7
GNS100	General Project Support	25	13.5
PVT100	Park Entrance, Vehicle Access, and Traffic Flow	22	11.9
NR100	Natural Resource Concerns	19	10.3
OS100	Out of Scope	14	7.6
AT100	Alternative Transportation	8	4.3
CC100	Cultural Concerns (Hawaii Specific, Archeological Will Go Under Sensitive Resources)	5	2.7
SUS100	Sustainability	5	2.7
AL200	Alternative Uses for Buildings	4	2.2
VE100	Visitor Experience	4	2.2
ALT300	Alternative Trails Suggestions	3	1.6
ED100	Education and Interpretation	3	1.6
PD100	Pedestrian Safety and Access	3	1.6
VIL100	Visual Impacts Concerns And Landscape Preservation	3	1.6
ML100	add or change mailing list	2	1.1
CZ100	Costal Zone Management	1	0.5
FH100	Flood Hazards	1	0.5
PK100	Parking Reduced	1	0.5
PK200	Parking Increased	1	0.5
SAF100	Safety Concerns	1	0.5
TR200	Traffic Increases	1	0.5
VI100	Visual Impacts	1	0.5
VPC100	Visitor Center Access, Parking and Congestion	1	0.5

The majority of correspondences received were from unaffiliated individuals (**Table 2**).

TABLE 2: CORRESPONDENCE SIGNATURE COUNT BY ORGANIZATION TYPE

Organization Type	Number of Correspondences
Federal Government	1
Non-Governmental	1
State Government	2
Unaffiliated Individual	58

Table 3 shows the distribution of how correspondences were received.

TABLE 3: CORRESPONDENCE DISTRIBUTION BY CORRESPONDENCE TYPE

Type	Number of Correspondences
Web Form	49
Other	5
Letter	5
E-mail	3

With Hawai'i Volcanoes being located in the state of Hawai'i, the majority of correspondence was received from commenters within the state (Table 4)

TABLE 4: CORRESPONDENCE DISTRIBUTION BY STATE

State	No. of Correspondences	Percent of all Correspondences
HI	50	80.6%
UN	4	6.5%
CA	2	3.2%
CO	1	1.6%
WA	1	1.6%
AZ	1	1.6%
KS	1	1.6%
IL	1	1.6%
MI	1	1.6%

The majority of correspondences received were from the United States. Two comments were received from Australia and Canada (Table 5).

TABLE 5: CORRESPONDENCE DISTRIBUTION BY COUNTRY

Country	No. of Correspondences	Percent of all Correspondences
AUS	1	1.6%
CAN	1	1.6%
USA	60	96.8%

4 SCOPING COMMENT SUMMARY

4.1 General Alternative Suggestions

4.1.1 Concern Statement: Increase Picnic Spaces

Building picnic spaces for visitors would allow everyone to enjoy this space more.

Representative Comment(s)

Correspondence Id: 32 Comment Id: 1033257

Comment Text: Please consider creating a covered picnic area near the Visitor's Center - (or anywhere else that works!) You will make the thousands of school children that visit HVNP every year VERY happy! Teachers too!

4.1.2 Concern Statement: Designated Bike Lanes

A designated biking lane would allow more bike access to the park.

Representative Comment(s)

Correspondence Id: 17 Comment Id: 1033218

Comment Text: My one comment is a request to provide designated bike lanes along Crater Rim Drive. I live in Volcano Village and would prefer to bike to the park if lanes were available.

4.1.3 Concern Statement: Alternate Location for USGS Building

Build the new USGS building in alternate location to avoid impacting koa and 'ōhi'a trees.

Representative Comment(s)

Correspondence Id: 2 Comment Id: 1033187

Comment Text: The proposed USGS building is placed in the middle of a grove of koa and ohia trees. Ohia trees nearby would likely not survive the construction due to the presence of ROD. An alternative location would be to retrofit existing buildings or demolish old buildings and build a new one in the 'neighborhood' of old buildings between the Volcano House and Emergency Services and along the loop road.

4.2 Alternative Uses for Buildings

4.2.1 Concern Statement: Retrofit Existing Buildings

Retrofit existing buildings and repurpose existing areas before building new parking areas and buildings.

Representative Comment(s)

Correspondence Id: 2 Comment Id: 1033188

Comment Text: The proposed addition to the visitor center looks good except for the parking issue. While the building is placed in an existing parking lot a significant amount of land is repurposed for a parking lot which is not the ideal way to welcome visitors to a national park. Instead of adding this new building consider retrofitting existing buildings between the KVC area

and the Volcano House to meet the need for additional interpretation space. Again, you could utilize the other buildings already in the park such as the old education center before constructing new buildings.

4.3 Alternative Trails Suggestions

4.3.1 Concern Statement: Ideas to Improve Trails

Integrate trails into the visitor center and make them accessible for all visitors.

Representative Comment(s)

Correspondence Id: 4 Comment Id: 1033194

Comment Text: I think it is good. I would like to see more integration with trail access from the visitor center to keep cars at that lot while visiting Sulphur banks, crater rim trail,

Correspondence Id: 41 Comment Id: 1033272

Comment Text: I'd love to see more trails become handicapped accessible where possible.

4.4 Alternative Transportation

4.4.1 Concern Statement: Ideas to Improve Alternative Transportation

Improve access to the park by including alternative transportation such as shuttle buses, off-site parking, and bike lanes.

Representative Comment(s)

Correspondence Id: 18 Comment Id: 1033220

Comment Text: I hope the new recovery plan offers an opportunity to build back better and provide safer and more equitable streets. The new roundabout and reoriented roadways should accommodate bike users and serve as a catalyst project for improving access for all the major roads throughout the park. NPS could also promote a 'park and pedal' concept where visitors are encouraged to leave their cars at the visitor center and bike to the park's many bicycle accessible attractions. Biking is a healthier option than driving and also produces a much smaller carbon footprint. This reconstruction project offers a perfect opportunity to address the safety and equity disparities in the park's transportation network. Please consider evaluating bicycle infrastructure improvements in the Environmental Assessment for community feedback.

Correspondence Id: 2 Comment Id: 1033189

Comment Text: Please consider other alternatives for parking such as off site parking with shuttles, encouraging other means of visitation rather than families in single cars. If the addition of the building requires that much additional parking do not build the building.

Correspondence Id: 46 Comment Id: 1033283

Comment Text: The only aspect not included in this plan that I and others put forward in the previous public comment on future park plans, is the need for shuttle buses including a new parking garage by the visitor center.

Correspondence Id: 29 Comment Id: 1033246

Comment Text: I would also encourage focusing more on additional parking and possibly a simple transit system to cut down on the amount of traffic when the lava is flowing.

4.5 Cultural Concerns

4.5.1 Concern Statement: Protect Sacred Spaces

The parks needs to be treated with respect, since it is a scared place for Native Hawaiians.

Representative Comment(s)

Correspondence Id: 41 Comment Id: 1033270

Comment Text: Hawaii Volcanoes National Park is a treasure to be cherished now and for future generations. Planning for the recovery must above all include and prioritize safety for the indigenous species....and for areas scared to the Hawaiian people, then for staff and visitors.

Correspondence Id: 23 Comment Id: 1033229

Comment Text: Building the new HVO in a place that has no impact to our native forest. All of these options must not damage any forest. The park is sacred to us. I've seen the park say they are going to remove 9 Ohia trees for a parking lot and ended up taking down more like 20. That is not acceptable. All of these listed here has to have the least if not no impact to our native forest. The ball park makes the most sense since it's a open field and already a disturbed area. The others seem to have a significant impact on forested areas of the park.

4.6 Concern Statement: Project Cost Concerns

The roundabout is a waste of money.

Representative Comment(s)

Correspondence Id: 10 Comment Id: 1033208

Comment Text: The roundabout near the front entrance seems like a huge waste of time and money and will probably increase accidents as people just have problems driving on roundabouts!

4.7 Education and Interpretation

4.7.1 Concern Statement: Education and Interpretation

There is a need for maps and educational information throughout the park.

Representative Comment(s)

Correspondence Id: 47 Comment Id: 1033289

Comment Text: 1. At Uekahuna the plans aren't detailed enough to know what signage or interpretation space will be like. It would be very helpful to new and returning visitors especially those who do not stop at the visitor center to have interpretive maps and other information to replace what people looked at in Jaggar Museum (as space allows). Timelines, aerial photos, the story of the eruption and explanations of what happened and geology are needed. These will be vital since the presence of interpretive staff or volunteers may not be what it was before.

4.8 General Project Support

4.8.1 Concern Statement: General Project Support

The community appreciates the professionalism and outreach to the community.

Representative Comment(s)

Correspondence Id: 27 Comment Id: 1033241

Comment Text: I voted on the initial proposals. After reviewing the one selected I think a very good job was done in the design/layout and keeping the park looking like there is minimal change along with nice aesthetics of the design so that it blends into the existing landscape. I'm also very impressed with the rendering capability of being able to slide the photos one way or the other to view the impact of the design to the landscape. It was very helpful.

Correspondence ID: 14 Comment ID: 1033214

Comment Text: I am very impressed and pleased with how you have proceeded with the planning of this project. Having had the opportunity to submit suggestions about the project at an earlier time, I feel that our combined suggestions have been heard and that we are in agreement in so many areas; however, your insights and judgement have taken my expectations to a higher level. Mahalo for the professionalism, cultural and environmental sensitivity, and Aloha you have brought to the planning this project. While I know that the details these plans are still to be worked out and are never carved in stone, I am excited by the possibilities and look forward to seeing our Volcanoes National Park take on the stature it has always deserved. Maika'i loa!

4.9 Natural Resource Concerns

4.9.1 Concern Statement: Expansion Impacts 'Ōhi'a

'Ōhi'a trees should not be removed to expand facilities.

Representative Comment(s)

Correspondence Id: 37 Comment Id: 1033265

Comment Text: Thank you for allowing me to comment on the expansion of parking. My understanding is that the larger lot will allow for double the parking spots and will also accommodate 15 tour busses. My concern is over tourism and that the parking area will be built on Old Ohia growth. "Rapid Ohia Death (*Ceratocystis fimbriata**) was identified on Hawaii Island in 2014. The fungus attacks and can quickly kill ohia trees (*Metrosideros polymorpha*). Ohia is endemic to Hawaii and comprises approximately 80% of Hawaii's native forests." (Dlnlr Hawaii) with concerns about fungus spreading through our Ohia trees, I think it's imperative to protect healthy trees.

Correspondence Id: 42 Comment Id: 1033273

Comment Text: While I support restoration of existing infrastructure I do not support the expansion of facilities. I especially oppose the expansion of motor vehicle parking and the cutting down of Ohia trees including the environment surrounding such trees.

4.9.2 Concern Statement: Use native plants

Native vegetation should be used to offset native vegetation removed for new buildings.

Representative Comment(s)

Correspondence Id: 47 Comment Id:

Comment Text: When projects such as these are being planned when possible please incorporate ways to fund the replacement of vegetation and native plants displaced in construction areas.

4.10 Pedestrian Safety and Access**4.10.1 Concern Statement: Safe Access for Pedestrians**

Safe areas for pedestrian crossings should be included within the project area.

Representative Comment(s)

Correspondence Id: 53 Comment Id: 1034386

Comment Text: A walking trail alongside the entrance for pedestrian visitors might be useful to reduce incidents at the roundabout, or clearly painted areas for them to safely cross.

4.11 Parking Increased**4.11.1 Concern Statement: More Parking Space**

Include more inclusive parking areas for elderly and disabled visitors at Uēkahuna bluff.

Representative Comment(s)

Correspondence Id: 6 Comment Id: 1033198

Comment Text: If any of the old buildings are demolished it would be good if there would be more parking space made available where lava can be seen from - older people and people with disabilities may not be able to walk from the KMC parking lot (I know I wasn't).

4.12 Park Entrance, Vehicle Access, and Traffic Flow**4.12.1 Concern Statement: Roundabouts Cause Confusion and Congestion**

Adding a roundabout to the front entrance will cause confusion and congestion for visitors.

Representative Comment(s)

Correspondence Id: 2 Comment Id: 1033190

Comment Text: The proposed entrance changes also appear to be unnecessary. While there is some congestion at the gate at times this proposal would not improve that except for park administration who would benefit from the pass-through lane. The traffic circle would likely create higher amounts of confusion for visitors who already seem to have a hard time figuring out how to go straight to get to the visitor center. The proposal describes improving safety, but I would like to see data on how many accidents/injuries there have been with the current pattern before investing in a significant project to change something that is working fine. If you do go ahead with these changes please consider allowing annual card pass holders use the pass through lane as well to help alleviate additional congestion at the entrance gate.

Correspondence Id: 29 Comment Id: 1033245

Comment Text: What is described so far sounds fine except for the roundabout. Please do not install a roundabout. They are confusing, dangerous, and totally unnecessary.

4.12.2 Concern Statement: Roundabouts will Improve Safety

Adding a roundabout to the front entrance will improve safety for visitors and reduce traffic.

Correspondence Id: 52 Comment Id: 1034381

Comment Text: Entrance Gate: I love the roundabout! Looks great, flows nicely, and makes the intersection so much easier to navigate. I also LOVE the designated pull out while exiting. Great observation, there are always vehicles pulled over at that exact spot. I also love the staff parking area, although I think it should be a little larger to be prepared for shift changes and for additional staff to anticipate continued increases in visitation.

Correspondence Id: 47 Comment Id: 1033288

Comment Text: The roundabout and proposed changes to and around the entrance station will be safer for all who enter the park. It will make access smoother and less time will be spent in lines and figuring out where to go. I would strongly hope that this portion of the plan can be built first.

4.13 Sustainability

4.13.1 Concern Statement: Sustainability

The project should incorporate sustainable practices into the development.

Representative Comment(s)

Correspondence Id: 24 Comment Id: 1033233

Comment Text: Does the plan include charging facilities for electric vehicles for the public as well as staff? Given that there is a push for the State of Hawaii to move in this direction, and that many visitors to HVNP drive over from the Kona side for a day visit, charging stations will be needed, especially as rental car companies switch their fleets to EVs. HVNP and it's affiliates will, I assume, be making the switch away from imported fossil fuels in its vehicles, where practical.

4.14 Visitor Experience

4.14.1 Concern Statement: Increase facilities for visitors

Include more facilities such as bathrooms, covered viewing areas, and picnic areas for visitors.

Representative Comment(s)

Correspondence ID: 13 Comment ID: 1033213

Comment Text: It would be important to have a large structure of a roof without walls constructed at Uēkahuna Bluff overlook to protect visitors during inclement weather. Without Jagger Museum available, there would otherwise be no protection at all for visitors in case of rain. Thank you for your consideration.

Correspondence ID: 9 Comment ID: 1033203

Comment Text: The list of projects includes demolition of Jagger Museum, but there seems no corresponding project to build a replacement museum. Please replace it; it was an invaluable learning experience. Not everyone visiting the Park is primarily interested in buying souvenirs at Visitor Center.

Correspondence ID: 52 Comment ID: 1034378

Comment Text: Our current picnic area between the restrooms and the art gallery is extremely popular. I often have trouble finding a table. With the growing park visitation and increase in parking this will only increase, we need to consider expanding this service and be prepared with more outdoor picnic areas around the visitor center. The area in front of the art gallery before the hula platform is suitable for more tables. I also recommend converting the forest area behind the new visitor center. This would be a great spot if it was made similar to our existing picnic area. Another issue for visitors is there is no where to picnic/eat if the weather is wet. Either pay money at the hotel, eat in the car, or leave the park after you spent all the time driving up here and paying to enter. There needs to be a covered picnic area in highly visited areas of the park (around the visitor center and jagger overlook). Perhaps tables in the 'additional outdoor covered area'; of the new visitor center or in the area behind the new visitor center? The outdoor interpretative lanai at the current/old visitor center might also be a great location for picnic tables, especially if it will host school groups. If the weather is wet there will be a great place for students to have lunch while on their field trip and this would also serve the general public.

Correspondence ID: 16 Comment ID: 1033216

Comment Text: The only comments I have on the Disaster Recovery Project are with respect to the KMC area. I do like the idea of new restrooms and a visitor center at KMC. Hikers on Crater Rim Trail pass KMC, but there is no signage indicating where the restrooms are at this point in time and that they are for the public.

4.15 Visual Impacts

4.15.1 Concern Statement: Visual Impacts

Additional building developments will have a visual impact for this project.

Representative Comment(s)

Correspondence Id: 56 Comment Id: 1036454

Comment Text: I fully agree with all of the Park's proposed actions to address the purpose and needs of the Disaster Relief Recovery Project, except for the proposed location of the new USGS field station in the historic KMC ball field. The visual impact of new or modified facilities on Park visitor is justified or even mitigated because they will be used by visitors. However, a field station for USGS (HVO and PIERC), with an inevitably large building and parking lot, would greatly add to the visual impact of this proposed project.

4.15.2 Concern Statement: Visual Impacts and Landscape Preservation

Revegetation with native plants should be used in new landscaping.

Representative Comment(s)

Correspondence Id: 52 Comment Id: 1034374

Comment Text: USGS Field Station - Great! Mahalo nui for keeping the ball park! Please remember to use native plants in the landscaping around the building.

Correspondence Id: 52 Comment Id: 1034379

Comment Text: I would LOVE for there to be a diverse native plant selection in the landscaping around the new and old visitor center as well as the jagger overlook that features some uncommon, rare, and even endangered plants. This expands education opportunities at the visitor center especially for school groups and those with disabilities since they cannot usually access trails and areas where these plants can be seen in the wild, if they are visible in the wild at all. Especially for the Ola'a unit of the National Park which is not open to the public. This also provides a great service to guests visiting the park for a single day or less. The parking area at the summit of Haleakala National Park does a wonderful job of featuring the Ahinahina (silversword). Perhaps having landscaping directly adjacent to the walls of the building between the structure and the sidewalks. For the visitor center: Lobelia hypoleuca, Trematolobelia wimmeri, Pritchardia beccariana, Clermontia spp, Cyanea spp, Astelia menziesiana, Freycinetia arborea, Pittosporum spp. For the Jagger Overlook: Pleomele hawaiiensis, Wiliwili?, Argemone glauca, Pittosporum spp, Portulaca sclerocarpa, Alphitonia ponderosa, Santalum paniculatum, Wikstroemia spp, Silene.

Appendix A
Correspondence Index of Organizations

THIS PAGE INTENTIONALLY LEFT BLANK.

Correspondence Index of Organizations

Org. Type	Organization Name	Correspondence ID	Code	Description
F	EPA	62	AE100	Baseline Conditions
		62	AL100	Alternative Suggestions
		62	AQ100	Air Quality
		62	CS100	Consultation
		62	EJ100	Environmental Justice
		62	NR100	Natural Resource Concerns
		62	PN100	Purpose and Need
		62	SUS100	Sustainability
L	Halau O Kekuhi	55	AL100	Alternative Suggestions
		55	ALT300	Alternative Trails Suggestions
		55	NR100	Natural Resource Concerns
S	State of Hawai'i Office of Planning and Sustainable Development	54	CZ100	Costal Zone Management
I	Hawai'i Department of Land and Natural Resources	60	FH100	Flood Hazards
		61	GNS100	General Project Support
I	Hawai'i State Senate	26	SUS100	Sustainability
I	International Archaeology LLC	31	GNC100	General Project Concerns
		31	GNS100	General Project Support
		31	OS100	Out of Scope
		31	PD100	Pedestrian Safety and Access
		31	VE100	Visitor Experience
I	Kūpuna Advisory	14	GNS100	General Project Support

Appendix B

Correspondence Index by Code

THIS PAGE INTENTIONALLY LEFT BLANK.

Correspondence Index by Code

Code	Description	Organization	ID
AE100	Baseline Conditions	EPA	62
AL100	Alternative Suggestions	EPA	62
AL100	Alternative Suggestions	Halau O Kekuhi	55
AL100	Alternative Suggestions	Visitor	13
AL100	Alternative Suggestions		2
AL100	Alternative Suggestions		6
AL100	Alternative Suggestions		10
AL100	Alternative Suggestions		11
AL100	Alternative Suggestions		15
AL100	Alternative Suggestions		17
AL100	Alternative Suggestions		25
AL100	Alternative Suggestions		28
AL100	Alternative Suggestions		29
AL100	Alternative Suggestions		30
AL100	Alternative Suggestions		32
AL100	Alternative Suggestions		34
AL100	Alternative Suggestions		35
AL100	Alternative Suggestions		40
AL100	Alternative Suggestions		44
AL100	Alternative Suggestions		47
AL100	Alternative Suggestions		50
AL100	Alternative Suggestions		51
AL100	Alternative Suggestions		52
AL100	Alternative Suggestions		56
AL100	Alternative Suggestions		57
AL200	Alternative Uses for Buildings		2
AL200	Alternative Uses for Buildings		52
ALT300	Alternative Trails Suggestions	Halau O Kekuhi	55
ALT300	Alternative Trails Suggestions		4
ALT300	Alternative Trails Suggestions		41
AQ100	Air Quality	EPA	62
AT100	Alternative Transportation		2
AT100	Alternative Transportation		17
AT100	Alternative Transportation		29
AT100	Alternative Transportation		46
AT100	Alternative Transportation		47
AT100	Alternative Transportation		53
AT100	Alternative Transportation		57
CC100	Cultural Concerns (Hawaii Specific, Archeological Will Go Under Sensitive Resources)		23
CC100	Cultural Concerns (Hawaii Specific, Archeological Will Go Under Sensitive Resources)		41

Code	Description	Organization	ID
CC100	Cultural Concerns (Hawaii Specific, Archeological Will Go Under Sensitive Resources)		50
CC100	Cultural Concerns (Hawaii Specific, Archeological Will Go Under Sensitive Resources)		51
CO100	Project Cost Concerns		10
CO100	Project Cost Concerns		46
CS100	Consultation	EPA	62
CZ100	Coastal Zone Management	State of Hawai'i Office of Planning and Sustainable Development	54
ED100	Education and Interpretation		30
ED100	Education and Interpretation		46
ED100	Education and Interpretation		47
ED100	Education and Interpretation		50
ED100	Education and Interpretation		53
ED100	Education and Interpretation		58
EJ100	Environmental Justice	EPA	62
FH100	Flood Hazards	Hawai'i Department of Land and Natural Resources	60
GNC100	General Project Concerns	International Archaeology LLC	31
GNC100	General Project Concerns	None	49
GNC100	General Project Concerns	Self	19
GNC100	General Project Concerns		2
GNC100	General Project Concerns		4
GNC100	General Project Concerns		12
GNC100	General Project Concerns		24
GNC100	General Project Concerns		30
GNC100	General Project Concerns		39
GNC100	General Project Concerns		43
GNC100	General Project Concerns		45
GNC100	General Project Concerns		46
GNC100	General Project Concerns		50
GNC100	General Project Concerns		51
GNC100	General Project Concerns		52
GNC100	General Project Concerns		57
GNS100	General Project Support	Hawai'i Department of Land and Natural Resources	61
GNS100	General Project Support	International Archaeology LLC	31
GNS100	General Project Support	Kūpuna Advisory	14
GNS100	General Project Support		3
GNS100	General Project Support		5
GNS100	General Project Support		6
GNS100	General Project Support		7
GNS100	General Project Support		8
GNS100	General Project Support		21
GNS100	General Project Support		22

Code	Description	Organization	ID
GNS100	General Project Support		25
GNS100	General Project Support		27
GNS100	General Project Support		34
GNS100	General Project Support		36
GNS100	General Project Support		44
GNS100	General Project Support		46
GNS100	General Project Support		51
GNS100	General Project Support		52
GNS100	General Project Support		56
ML100	add or change mailing list		18
ML100	add or change mailing list		45
NR100	Natural Resource Concerns	EPA	62
NR100	Natural Resource Concerns	Halau O Kekuhi	55
NR100	Natural Resource Concerns	Unaffiliated	16
NR100	Natural Resource Concerns		2
NR100	Natural Resource Concerns		18
NR100	Natural Resource Concerns		23
NR100	Natural Resource Concerns		33
NR100	Natural Resource Concerns		37
NR100	Natural Resource Concerns		38
NR100	Natural Resource Concerns		42
NR100	Natural Resource Concerns		47
NR100	Natural Resource Concerns		50
NR100	Natural Resource Concerns		51
NR100	Natural Resource Concerns		53
NR100	Natural Resource Concerns		56
NR100	Natural Resource Concerns		57
OS100	Out of Scope	International Archaeology LLC	31
OS100	Out of Scope		4
OS100	Out of Scope		9
OS100	Out of Scope		10
OS100	Out of Scope		41
OS100	Out of Scope		46
PD100	Pedestrian Safety and Access	International Archaeology LLC	31
PD100	Pedestrian Safety and Access		53
PE100	Park Entrance		2
PK100	Parking Reduced		52
PK200	Parking Increased		6
PN100	Purpose and Need	EPA	62
PVT100	Park Entrance, Vehicle Access, and Traffic Flow		2
PVT100	Park Entrance, Vehicle Access, and Traffic Flow		18
PVT100	Park Entrance, Vehicle Access, and Traffic Flow		23

Code	Description	Organization	ID
PVT100	Park Entrance, Vehicle Access, and Traffic Flow		27
PVT100	Park Entrance, Vehicle Access, and Traffic Flow		29
PVT100	Park Entrance, Vehicle Access, and Traffic Flow		33
PVT100	Park Entrance, Vehicle Access, and Traffic Flow		39
PVT100	Park Entrance, Vehicle Access, and Traffic Flow		40
PVT100	Park Entrance, Vehicle Access, and Traffic Flow		46
PVT100	Park Entrance, Vehicle Access, and Traffic Flow		47
PVT100	Park Entrance, Vehicle Access, and Traffic Flow		51
PVT100	Park Entrance, Vehicle Access, and Traffic Flow		52
SAF100	Safety Concerns		1
SAF100	Safety Concerns		10
SAF100	Safety Concerns		17
SAF100	Safety Concerns		57
SUS100	Sustainability	EPA	62
SUS100	Sustainability	Hawai'i State Senate	26
SUS100	Sustainability		12
SUS100	Sustainability		24
SUS100	Sustainability		50
TR100	Traffic Improvements		9
TR200	Traffic Increases		25
TR200	Traffic Increases		33
TR200	Traffic Increases		57
VE100	Visitor Experience	International Archaeology LLC	31
VE100	Visitor Experience	Unaffiliated	16
VE100	Visitor Experience	Visitor	13
VE100	Visitor Experience		9
VE100	Visitor Experience		46
VE100	Visitor Experience		52
VI100	Visual Impacts		56
VIL100	Visual Impacts Concerns and Landscape Preservation		52
VPC100	Visitor Center Access, Parking, and Congestion		52

Appendix C
Materials Provided During Scoping

THIS PAGE INTENTIONALLY LEFT BLANK.



NPS Photo/J.Wei

National Park Service February 2022

Project Overview

The focus of the Disaster Recovery Project is the repair, replacement, removal or relocation of the facilities and functions that were damaged at Uēkahuna by the 2018 eruption. The project also addresses continued and potential future use of the area that has important geologic, natural, and cultural significance, and is considered by Native Hawaiians and other groups as a sacred area. This presentation provides an overview of the proposed facilities and site improvements.

NPS will be accepting public comments from **February 9, 2022** to **March 11, 2022**. Comments can be submitted through the Planning, Environment, and Public Comment (PEPC) website at the link below. Additional information on the project components and a full list of actions are available on the PEPC site.

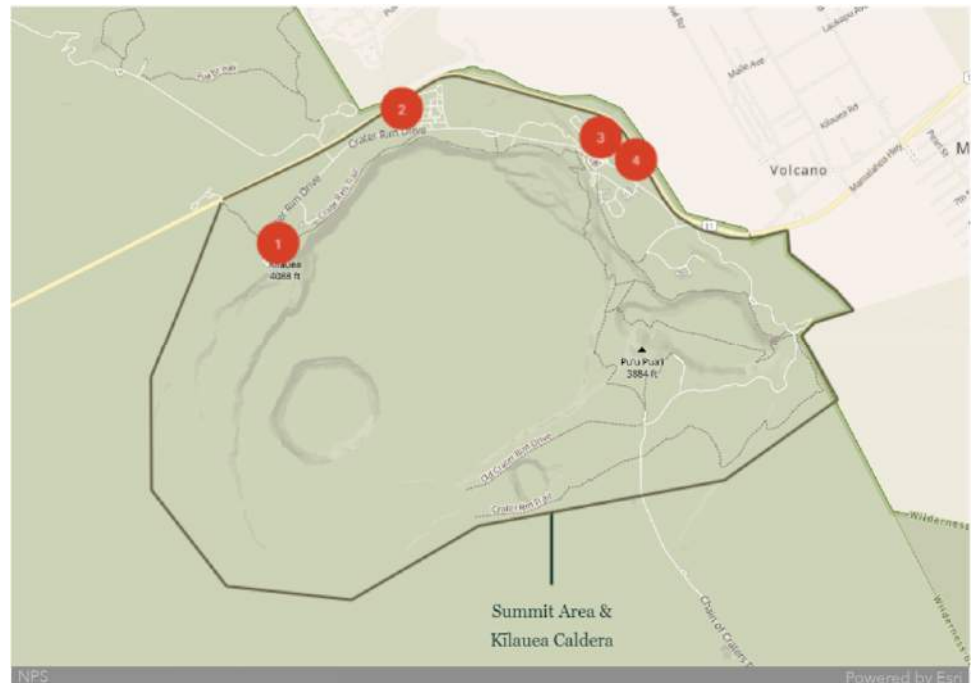
www.parkplanning.nps.gov/HAVODisasterRecovery

See the **"Ways to Comment"** section at the end of this document for more details on how you can submit comments.



The elements of the Disaster Recovery Project all occur within the Summit Area of Hawai'i Volcanoes National Park and include:

1. Demolishing the damaged facilities and repairing visitor use amenities at Uēkahuna
2. Replacing the HVO research facilities with a new field station next to the Kilauea Military Camp (KMC)
3. Replacing the visitor center function with a new building next to the Kilauea Visitor Center (KVC)
4. Realigning Crater Rim Drive at the park entrance to improve visitor safety



USGS Photo - Halema'uma'u crater Before & After – November 28, 2008 (left); August 1, 2018 (right)



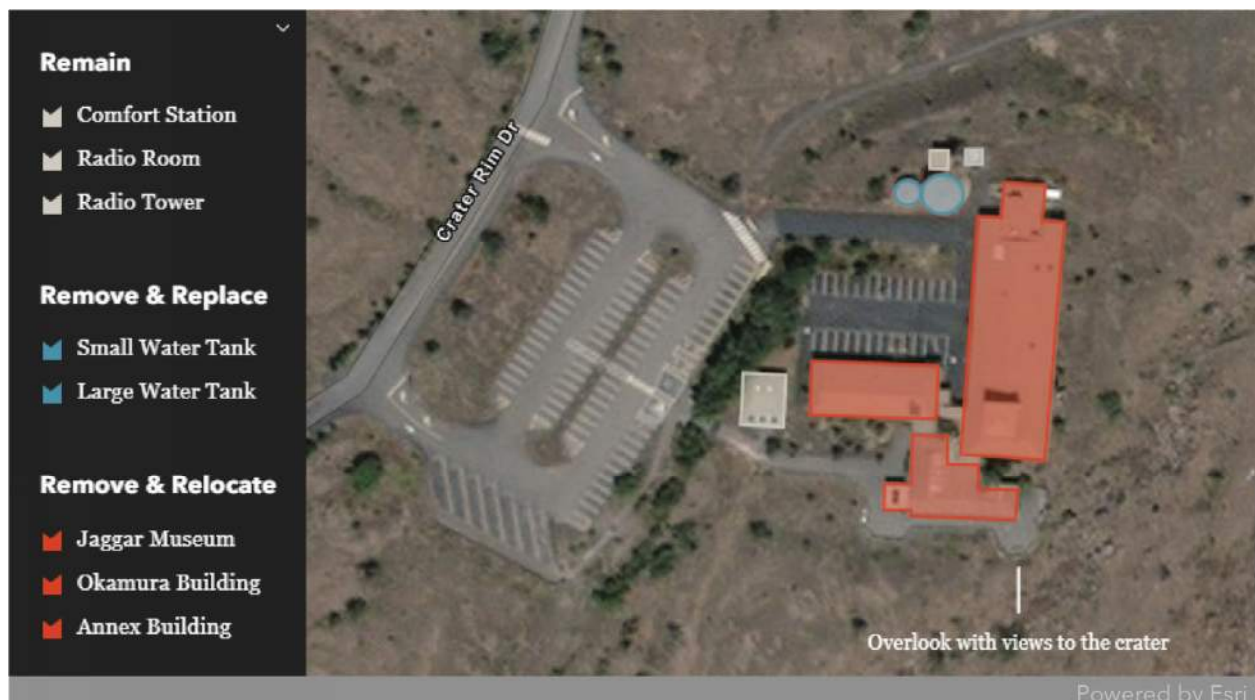
Uēkahuna



NPS Photo/J.Wei - Panoramic view from Uēkahuna looking west towards former Jaggar Museum site (Okamura building on the right)

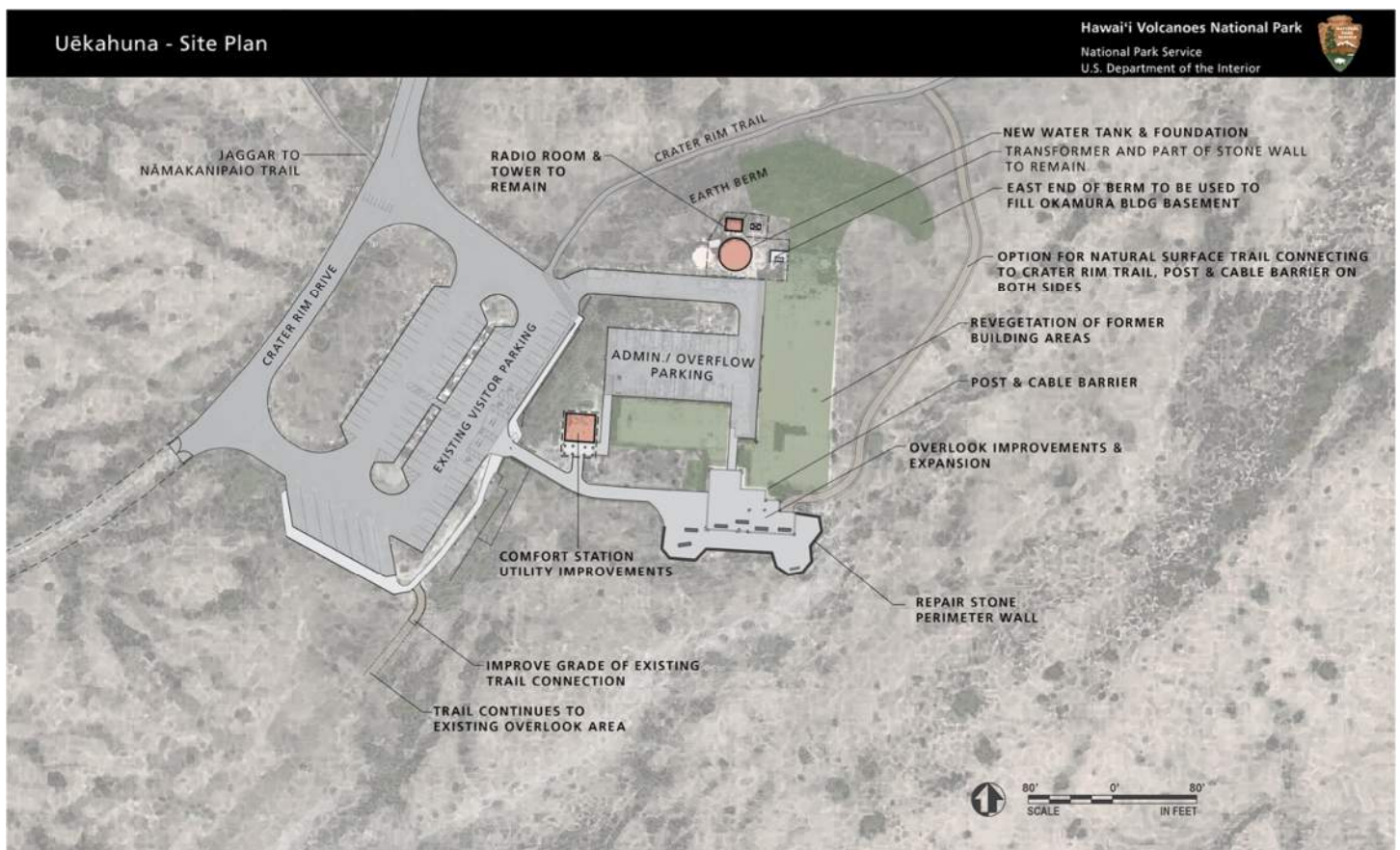
The facilities affected by the 2018 event include the Reginald T. Okamura (Okamura) building and the adjacent Geochemistry Annex (Annex) building - both operated by the U.S. Geological Survey-Hawaiian Volcano Observatory (HVO) as research facilities, and the historic Jaggar Museum - operated by NPS as a visitor center.

These facilities would be removed and the amount of infrastructure at the bluff would be reduced. The remaining visitor amenities and utilities would be repaired and improved.





Existing Facilities at Uēkahuna

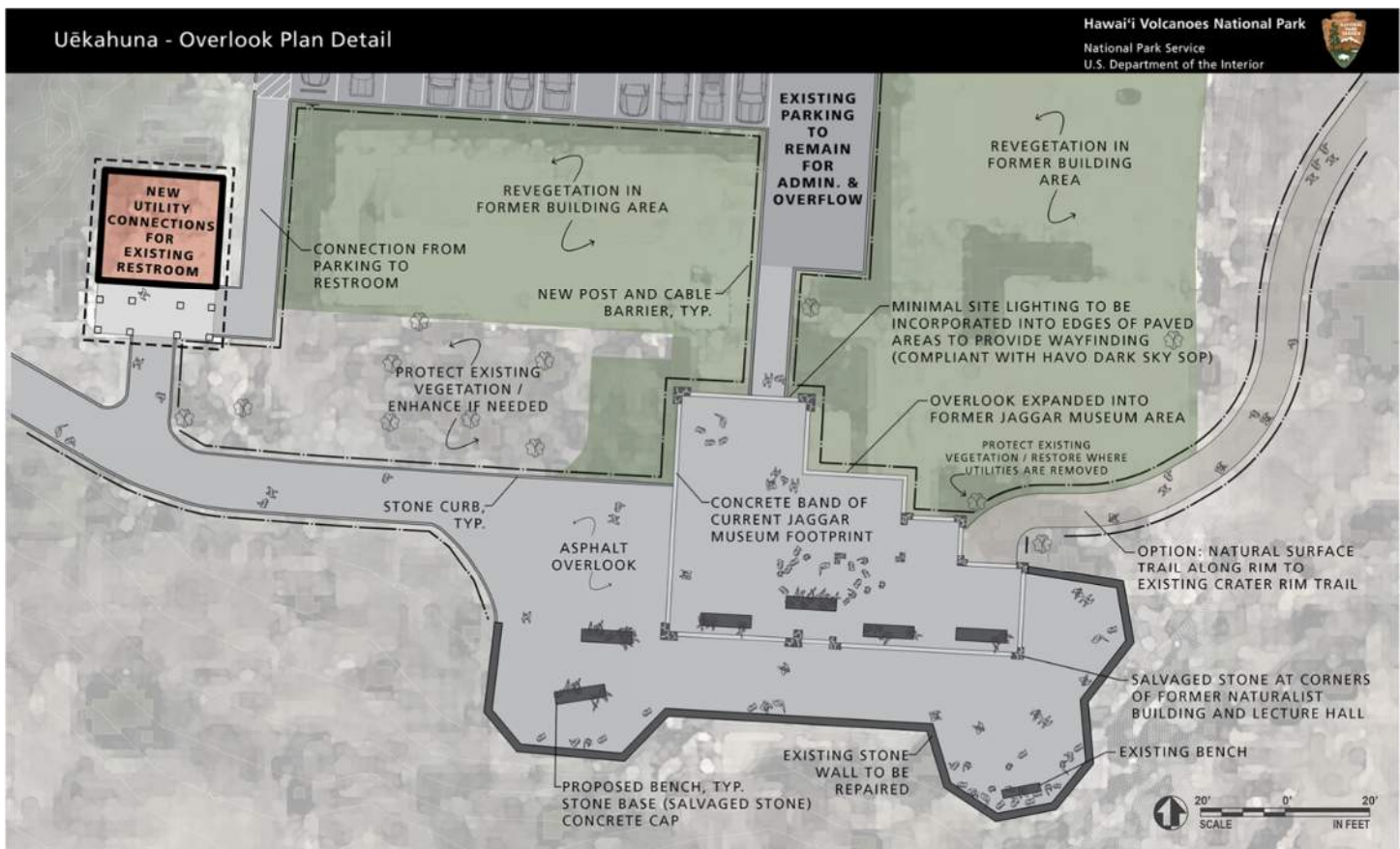


Site Plan



Project Elements:

- Remove Okamura building, Geochemistry Annex building, and Jaggar Museum
- Revegetate majority of building footprints with native plants
- Improve utility connections to existing comfort station
- Replace deteriorated water tank
- Repair and improve overlook
- Repair overlook stone perimeter wall
- Construct natural surface trail to connect to Crater Rim Trail
- Install new post and cable barrier around visitor use areas



Plan Detail of Overlook

Overlook Repair & Improvements

- Incorporate historical reference to the Jaggar Museum, with building footprint delineated on the ground plane with stone salvaged from the building
- Retain and repair the overlook wall
- Expand the overlook area into the Jaggar Museum footprint
- Add large benches to serve as both seating and the opportunity for elevated viewing; incorporate salvaged stone from the Jaggar Museum
- Use post and cable barrier to delineate the limits of the overlook area



View from Volcano House Overlook

The before and after images below show how the view of Uēkahuna bluff is anticipated to change under proposed conditions.

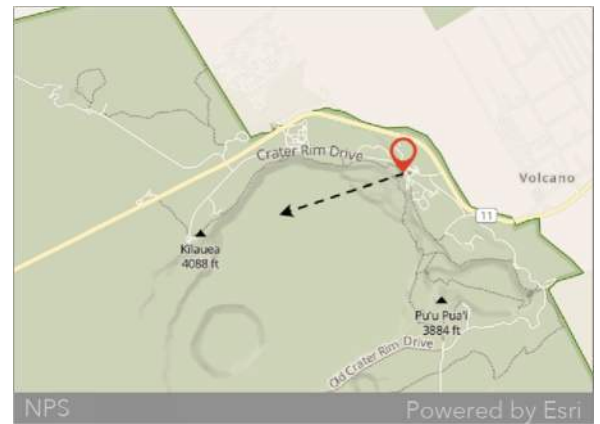


Photo location and view direction



Before



After



View from Crater Rim Trail

The before and after images below show how the view of Uēkahuna is anticipated to change under proposed conditions.



Photo location and view direction



Before



After



USGS Field Station



The USGS research facilities would be relocated to a site adjacent to the Kilauea Military Camp (KMC). The new building would be nestled in among an existing grove of trees, between the KMC and an open grass area. This open area includes a historic ball field that becomes overflow parking during peak visitation.



Tree grove at proposed field station site, viewed from existing gravel drive (open, ball field area in the background on the left)



Site Plan

Due to the compact site, the building is two stories high, with on grade parking wrapped around the north and east sides of the building. The building and parking area were carefully located to minimize loss of existing koa and 'ōhi'a trees on site. Most of the parking and loading area is directly adjacent to the KMC building service yard.

Project Elements

- Minimize physical and visual impact to adjacent ball field
- Minimize impact to existing trees and use existing trees to help new building blend into the landscape
- Build modern research facility that is compatible with the architectural character of other park buildings



Building Exterior

View from Access Road



Oversized window of the conference room on second floor (center), covered walkway and main entrance (right)

View from Entry



The form of the building is derived from a prototypical gable building that is split into two halves – one side for administrative offices, and the other side for the research laboratories and lab support functions.



View from Kilauea Military Camp

The before and after images below show how the view is anticipated to change under proposed conditions.

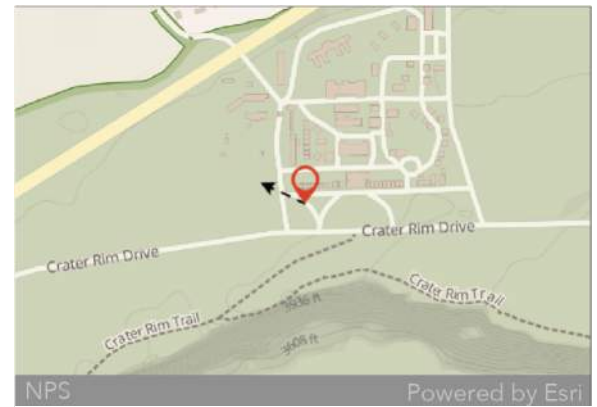


Photo location and view direction



Before



After



Visitor Center

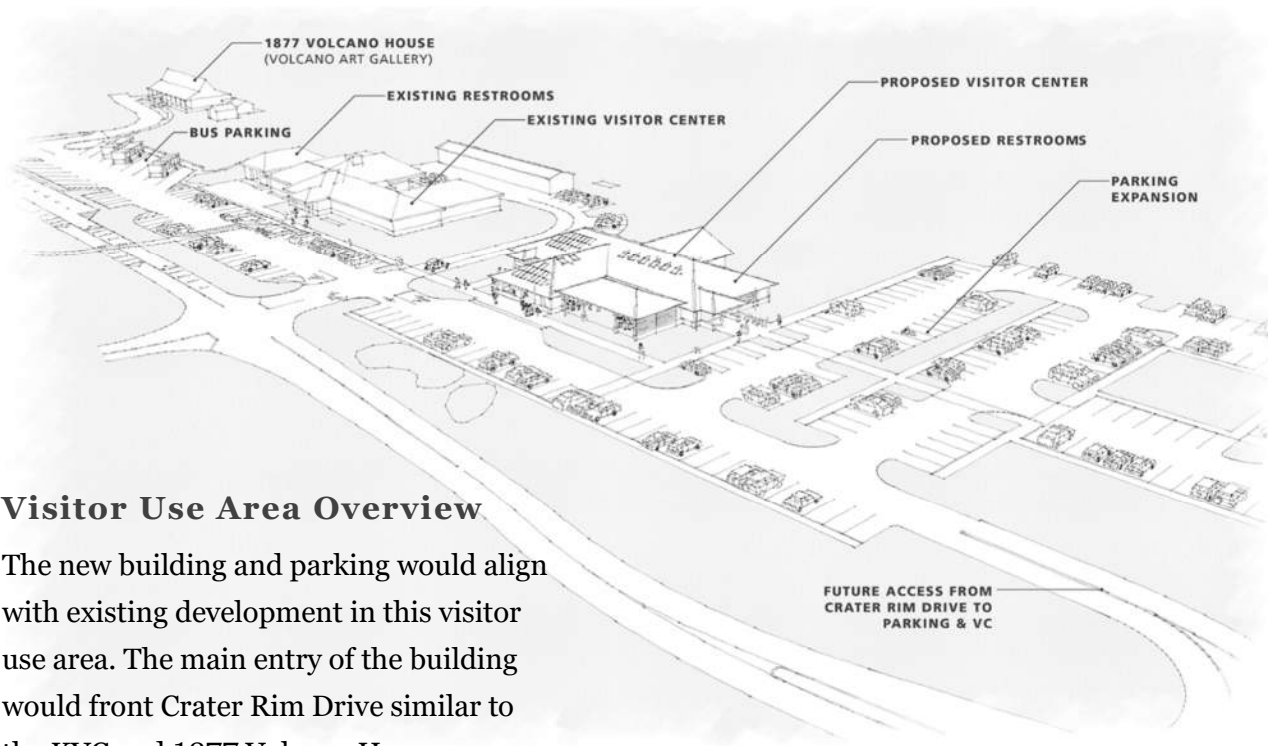


The new visitor center building to replace the loss of the Jaggar Museum would be located next to the existing KVC/headquarters building and near other visitor destinations. The existing building currently serves as the park headquarters. A portion of the building is also used for a bookstore and visitor center, and the auditorium is used for visitor orientation. Upon construction of the new visitor center, the KVC would continue to serve as the park headquarters. The visitor use portion would be adaptively reused to provide a space for indoor park programs, special events, and K-12 educational programming.

The proposed development would use a portion of existing visitor parking and forested area with the building closest to the KVC and expanded parking around the east and south sides.



Existing parking at KVC and proposed location for new building, view from entrance drive on Crater Rim Drive



Visitor Use Area Overview

The new building and parking would align with existing development in this visitor use area. The main entry of the building would front Crater Rim Drive similar to the KVC and 1877 Volcano House.

Visitor Center - Site Plan

Hawai'i Volcanoes National Park
National Park Service
U.S. Department of the Interior



Site Plan

Visitor Center

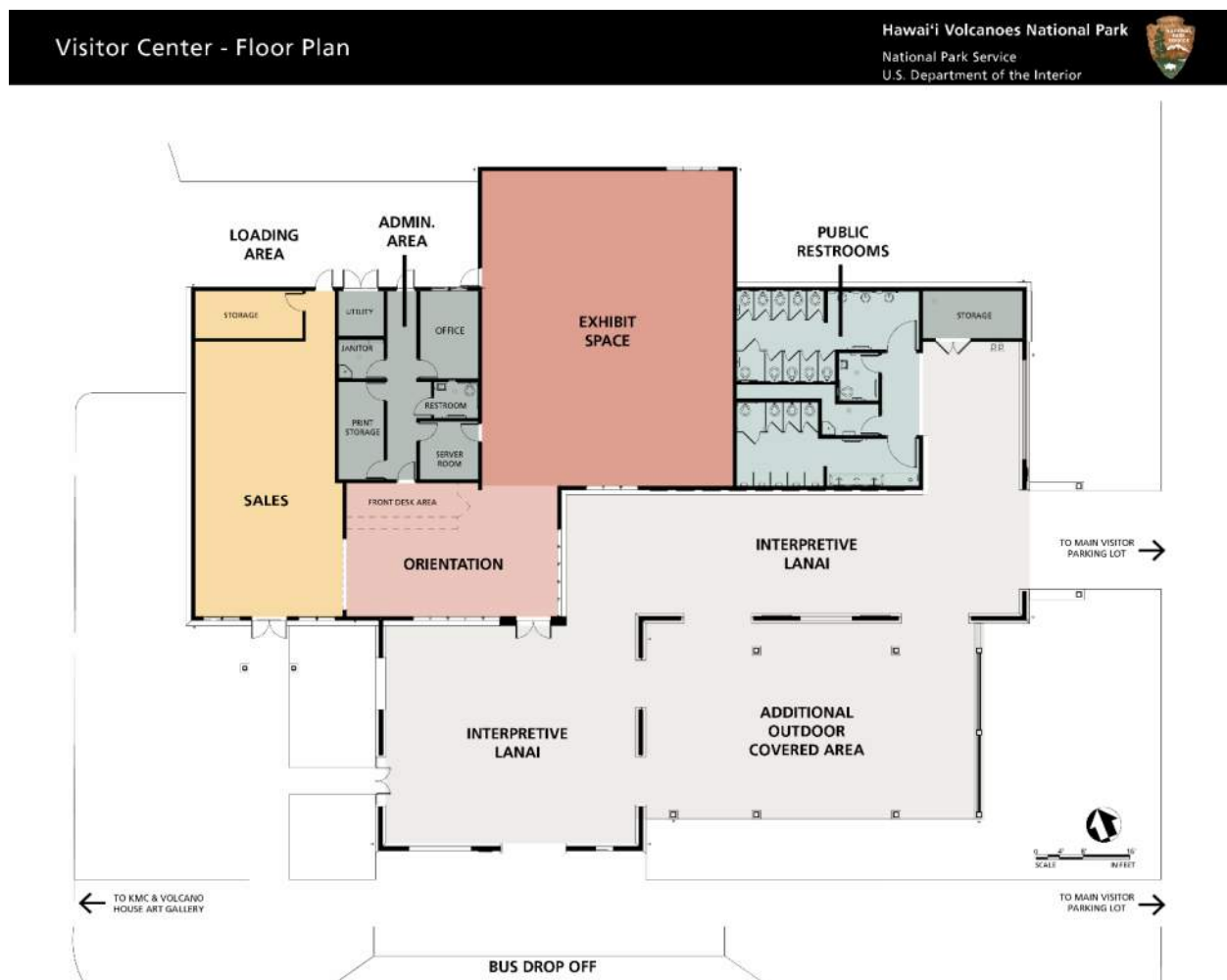


Project Elements

- Build new visitor center building that is compatible with surrounding historic landscape, locate building near KVC/headquarters building
- Expand visitor parking
- Provide covered outdoor area for orientation, exhibits, and gathering space
- Minimize impacts to site resources as much as possible

Visitor Center Floor Plan

The interpretive lanai is intended to act as an outdoor extension of the visitor center where visitors can get the information necessary for planning their visit and learn about the park resource without having to enter the building. This allows for a smaller indoor space as well as orientation and interpretation that is available 24/7. This outdoor area would also serve as covered programmatic space for ranger programs and cultural demonstrations.



Floor Plan



Building Exterior

View of Front Entry



Sales area entrance can be seen on the left, main entrance in the middle, and access to restrooms on the far right

View of Entry from Visitor Parking Expansion



Additional outdoor covered area on the left, access to restrooms to the right



View from Crater Rim Drive

(at intersection)

The before and after images below show how the view along Crater Rim Drive is anticipated to change under proposed conditions.

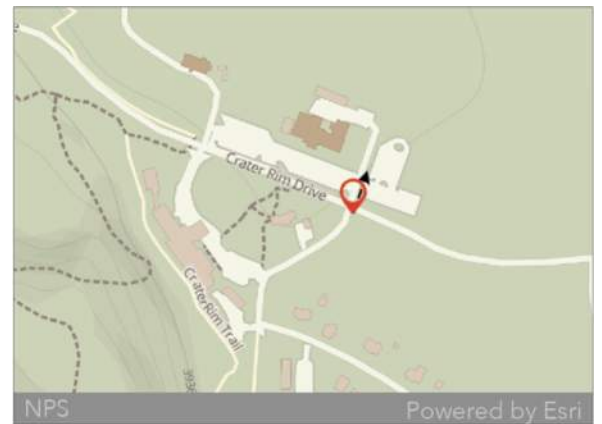


Photo location and view direction



Before



After



View from Crater Rim Drive

(looking toward park entrance)

The before and after images below show how the view along Crater Rim Drive is anticipated to change under proposed conditions.

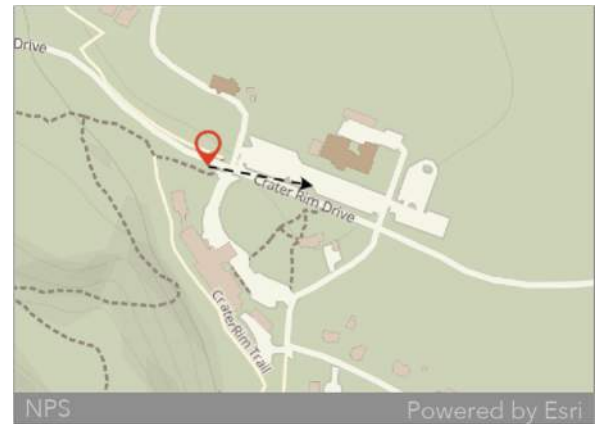


Photo location and view direction



Before



After



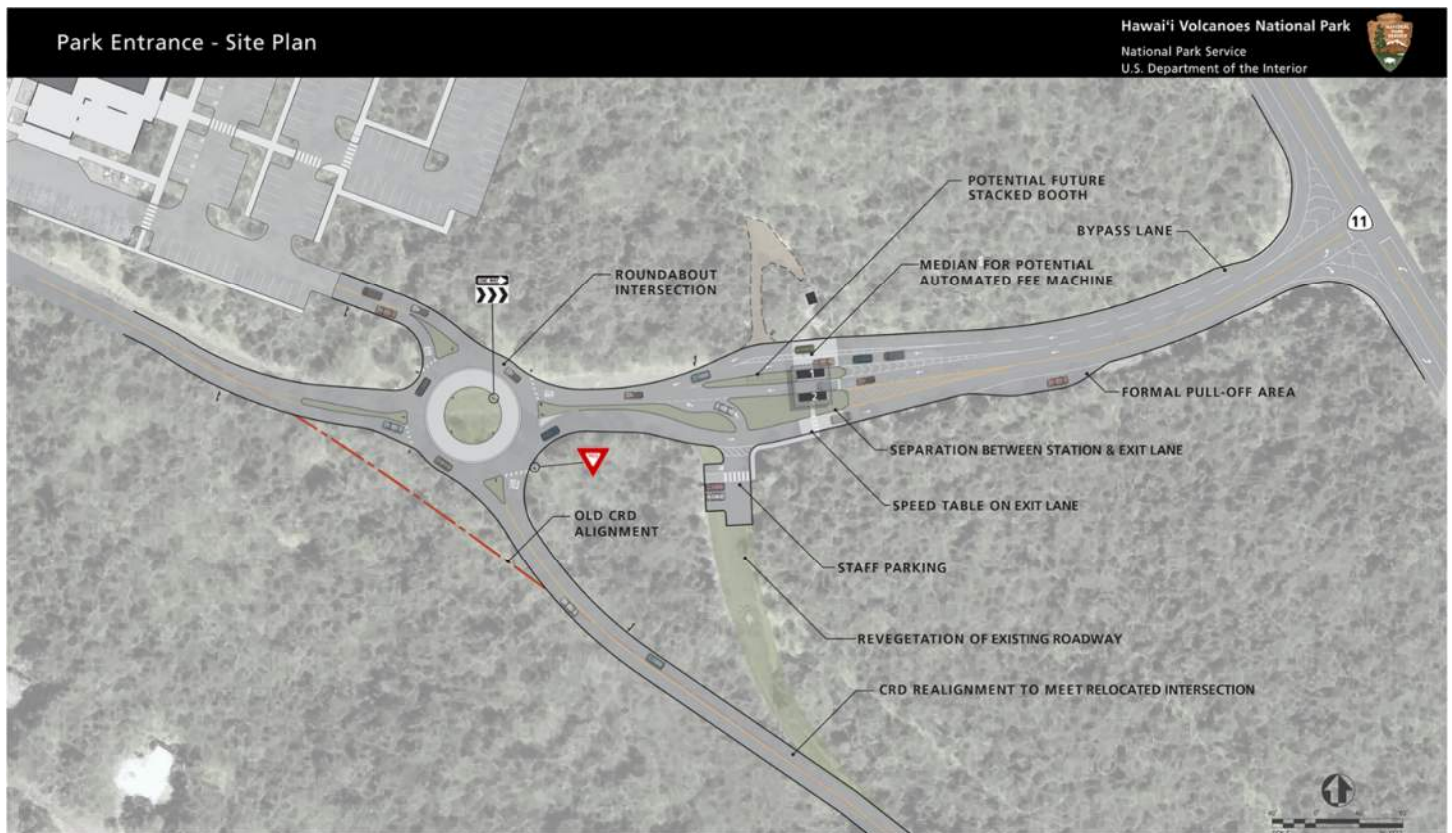
Park Entrance



Increases in visitation over the past decade and changes to circulation due to past eruptions have led to traffic congestion problems that pose collision hazards for motorists and pedestrians, starting at the turn onto the park entrance roadway from State Highway 11 and continuing through the entrance station to the main visitor center area. The entrance station is located on Crater Rim Drive (CRD), approximately 500' from the intersection with State Highway 11.



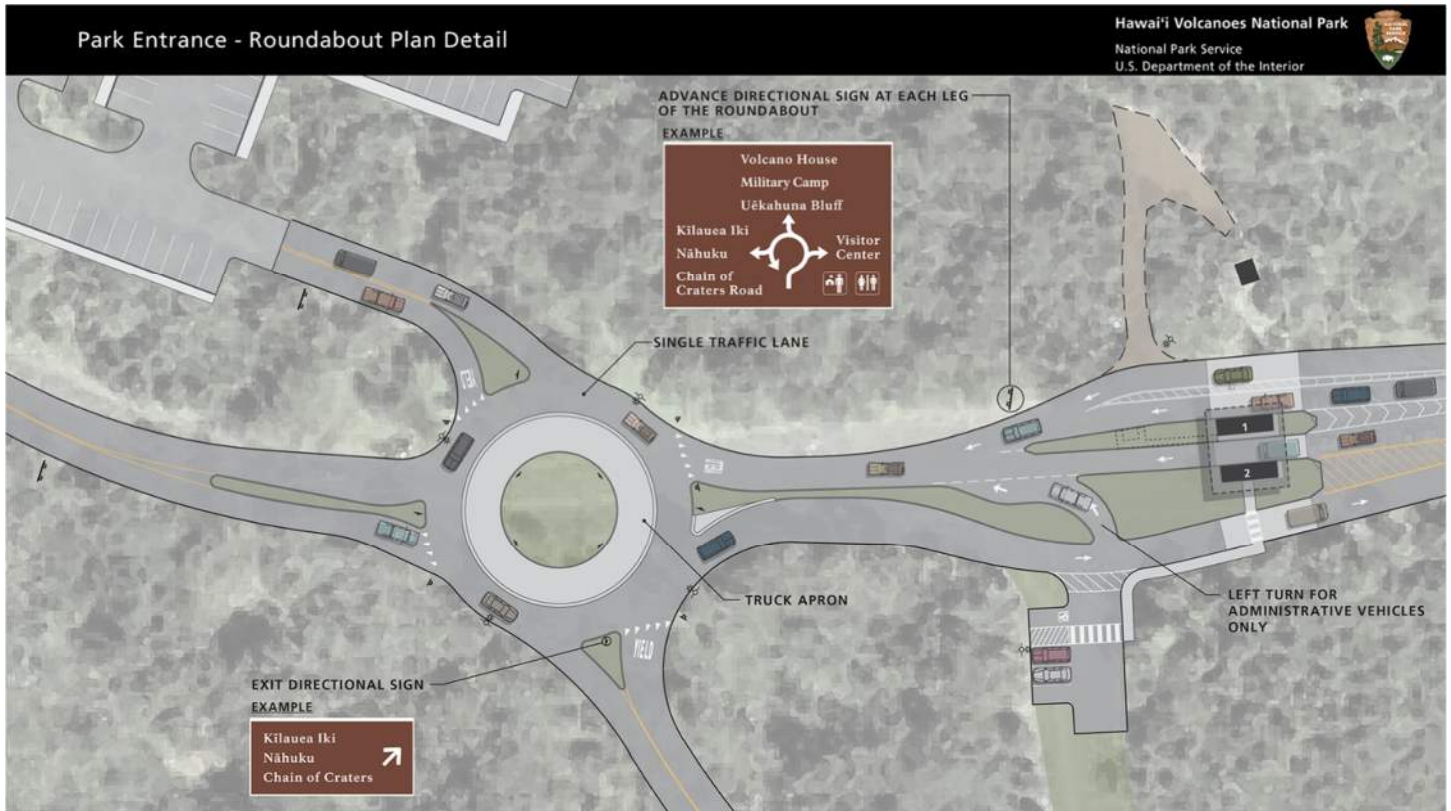
Existing conditions along Crater Rim Drive. The park road is lined with dense forest vegetation.



Site Plan

Project Elements

- Relocate CRD intersection and convert to roundabout
- Realign CRD from roundabout toward Chain of Craters. Follow old CRD alignment as much as possible
- Add (1) entrance lane as an administrative bypass
- Add formal exit pull-off area
- Relocate staff parking within existing road footprint - (1) accessible stall and (3) standard stalls
- Add accessible route from staff parking to entrance station
- Separate exit lane from entrance station
- Remove existing section of CRD and revegetate with native plants



Plan Detail of Roundabout Intersection

Entrance Road

View Toward Entrance Station



Proposed formal pull-off area on the left and proposed administrative bypass lane on the right

Park Entrance



Roundabout Intersection

View Toward Entrance Station



Road to Chain of Craters on the right and road to new visitor center on the left



View from Roundabout

The before and after images below show how the view along Crater Rim Drive is anticipated to change under proposed conditions.



Photo location and view direction



Before



After



Ways to Comment

It is important that we hear from you!

We will be accepting comments from

February 9, 2022 to March 11, 2022.

Comment Online

Submit your comments via our Planning, Environment, and Public Comment (PEPC) website using the link below. You will also find additional information on the project components and a full list of actions.

<https://parkplanning.nps.gov/HAVODisasterRecovery>



Comment by Phone

Call us. We have a phone line dedicated to receiving your comments on this project. You can leave a detailed message or request that someone call you back.

808.460.6212

Attend a Virtual Meeting

We will be hosting two virtual public meetings on **February 24, 2022 from 12:00PM-1:00PM HST and 6:00PM-7:00PM HST**. The virtual meetings will provide an opportunity for the public to learn more about the project, have discussions with park staff, and provide comments. There will be a presentation at the top of the hour of each meeting. Use the links below to join the meetings online or join by phone using the toll-free number and meeting ID.

February 24, 2022 12:00PM-1:00PM HST

Join the online meeting:

<https://swca.zoom.us/j/91430664015>

Join by phone:

(888) 475-4499 US Toll-free

Meeting ID: 914 3066 4015

February 24, 2022 6:00PM-7:00PM HST

Join the online meeting:

<https://swca.zoom.us/j/97252271515>

Join by phone:

(888) 475-4499 US Toll-free

Meeting ID: 972 5227 1515

Comments will not be accepted by fax, e-mail, or any other way than those specified above. Bulk comments in any format (hard copy or electronic) submitted on behalf of others will not be accepted. Before including your address, phone number, e-mail address, or other personal identifying information in your comment, you should be aware that your entire comment, including your personal identifying information, may be made publicly available at any time. While you can ask us to withhold your personal identifying information from public review, we cannot guarantee that we will be able to do so.



Mahalo!



NPS Photo/J.Wei - Full moon over Halema'uma'u crater, views of eruption during a clear night

Visit the park website to learn more about Hawai'i Volcanoes National Park
<https://www.nps.gov/havo/index.htm>