

Appendix B

Civic Engagement Summary and  
Comment Analysis Report





# Hawai'i Volcanoes Disaster Recovery Project

## Civic Engagement Summary and Comment Analysis Report



Photograph credits: Left – NPS photo by J. Ferracane; Top Right – USGS photo; Bottom Right – USGS photo.

THIS PAGE INTENTIONALLY LEFT BLANK.



## Contents

1	Introduction .....	1
1.1	Civic Engagement.....	1
1.1.1	Agency Outreach .....	1
1.1.2	Kūpuna Outreach .....	2
1.1.3	News Release and Planning, Environment and Public Comment Website .....	2
1.2	Summary of Public Participation During Civic Engagement.....	2
2	The Comment Analysis Process.....	4
2.1	Definition of Terms .....	4
2.2	Guide to this Document.....	4
3	Content Analysis .....	5
4	Civic Engagement Comment Summary .....	9
4.1	General Alternative Suggestions .....	9
4.1.1	Concern Statement: Event Space Suggestion .....	9
4.1.2	Concern Statement: Multi-Storied Buildings (parking, visitor center) .....	9
4.1.3	Concern Statement: Order of Construction .....	9
4.1.4	Concern Statement: Bicycle Facilities.....	9
4.1.5	Concern Statement: Develop a Shuttle System .....	10
4.1.6	Concern Statement: Theatre.....	10
4.1.7	Concern Statement: Alternate Locations for Visitor Center.....	11
4.1.8	Concern Statement: Sustainability .....	11
4.1.9	Concern Statement: Alternative Parking Locations .....	11
4.1.10	Concern Statement: Alternative Recreation Suggestions .....	11
4.1.11	Concern Statement: Restroom Improvements .....	12
4.1.12	Concern Statement: Viewing at Bluff .....	12
4.2	Alternative Suggestions Concept 2 .....	13
4.2.1	Concern Statement: Ideas to Improve Concept 2.....	13
4.3	Alternative Suggestions Concept 3 .....	13
4.3.1	Concern Statement: Ideas to Improve Concept 3.....	13
4.4	Alternative Suggestions Concept 4 .....	14
4.4.1	Concern Statement: Ideas to Improve Concept 4.....	14
4.5	Alternative Uses for Buildings .....	14
4.5.1	Concern Statement: Keep the Annex/Alternative Uses .....	14

4.5.2	Concern Statement: Reuse Jaggar Museum or Pieces of Jaggar Museum.....	15
4.5.3	Concern Statement: Ideas for Using Okamura .....	16
4.5.4	Concern Statement: Other Alternatives Raised for Uses.....	16
4.6	Alternative Trail Suggestions.....	16
4.6.1	Concern Statement: General Make More Trails.....	16
4.6.2	Concern Statement: Crater Rim .....	17
4.6.3	Concern Statement: Concept 4 Trail Connections.....	17
4.7	Ethnographic Concerns .....	17
4.7.1	Concern Statement: Reduce the footprint.....	17
4.7.2	Concern Statement: Building Design Should Reflect Hawaiian Culture .....	18
4.7.3	Concern Statement: Ceremonial Use Should be Incorporated .....	18
4.7.4	Concern Statement: Sacred Place.....	19
4.8	Ethnographic Concerns Concept 3 .....	19
4.8.1	Concern Statement: Prefer this Concept .....	19
4.9	Civic Engagement.....	19
4.9.1	Concern Statement: Request for Further Information in the Process.....	19
4.9.2	Concern Statement: More Communication Needed .....	20
4.9.3	Concern Statement: Request to be a Consulting Party .....	20
4.10	Project Cost Concerns.....	21
4.10.1	Concern Statement: Costs Would Influence Preference .....	21
4.10.2	Concern Statement: Concept Costs.....	21
4.11	Cultural Resource Concerns .....	21
4.11.1	Concern Statement: New Information on Sites .....	21
4.11.2	Concern Statement: Mitigation for Demolition of Historic Properties .....	22
4.11.3	Concern Statement: Follow Secretary of the Interior Standards when Remodeling Buildings .....	22
4.11.4	Concern Statement: Impacts to Historic Properties in Concept 1 .....	22
4.11.5	Concern Statement: Support for Concept 2 to Avoid Impacts to Historic Properties.....	22
4.11.6	Concern Statement: Concept 3 Crowds the Historic District .....	23
4.11.7	Concern Statement: Artifacts at KMC Area .....	23
4.12	Education and Interpretation.....	23
4.12.1	Concern Statement: Reuse Exhibits and Jaggar Museum as Part of Interpretation .....	23

4.12.2	Concern Statement: Co-locate USGS-PIERC with the Natural Resources Division, put Education Center in Central Location .....	24
4.12.3	Concern Statement: Education Center – Concept 2 Preferred.....	24
4.12.4	Concern Statement: Concept 4 and USGS Co-Location and Education .....	24
4.12.5	Concern Statement: Better Use of Education Center/Design.....	24
4.13	Operation and Maintenance .....	25
4.13.1	Concern Statement: Costs of Staffing.....	25
4.13.2	Concern Statement: Costs for Additional Kiosk.....	25
4.13.3	Concern Statement: Support for Concept 1 Costs .....	25
4.14	Natural Resources.....	25
4.14.1	Concern Statement: Preserve ‘Ōhi‘a Forests .....	25
4.14.2	Concern Statement: High Impacts on Forest .....	26
4.14.3	Concern Statement: Reduced Impacts on Forest .....	26
4.14.4	Concern Statement: Ball Field Already Disturbed.....	26
4.14.5	Concern Statement: Concerns about Nēnē for Concept 4.....	27
4.15	Pedestrian Safety and Access General.....	27
4.15.1	Concern Statement: Safety on the Bluff .....	27
4.15.2	Concern Statement: Pedestrian Safety Concept 1 .....	27
4.15.3	Concern Statement: Signs.....	28
4.15.4	Concern Statement: Pedestrian Safety Concept 4 .....	28
4.16	Park Entrance General .....	28
4.16.1	Concern Statement: Alternative Entrance Suggestions .....	28
4.16.2	Concern Statement: Need a Secondary Entrance/Exit.....	29
4.16.3	Concern Statement: Concept 3 Kiosk Placement.....	29
4.16.4	Concern Statement: Concept 4 Entrance Concerns .....	29
4.17	Parking.....	29
4.17.1	Concern Statement: Reduce Parking to Control Visitors.....	29
4.17.2	Concern Statement: Concept 1 More Parking .....	30
4.17.3	Concern Statement: Bus Parking Locations .....	30
4.17.4	Concern Statement: General Support or Opposition to More Parking .....	30
4.18	Traffic Improvement .....	30
4.18.1	Concern Statement: Roundabout .....	30
4.19	Traffic Increases .....	31
4.19.1	Concern Statement: Congestion .....	31

4.19.2	Concern Statement: Concept 4 Increases the Traffic.....	31
4.20	USGS Building Location .....	32
4.20.1	Concern Statement: USGS Should Be Close to the Crater .....	32
4.20.2	Concern Statement: USGS Should Be Separated from Visitor Center .....	32
4.20.3	Concern Statement: USGS Should Be Close to the Visitor Center for Increased Education.....	32
4.21	Visitor Experience .....	33
4.21.1	Concern Statement: Design of Interior .....	33
4.21.2	Concern Statement: Visitor Experience Should be First Priority.....	33
4.21.3	Concern Statement: Keep Visitor Services in One Area .....	33
4.21.4	Concern Statement: Need Covered Areas for Weather.....	34
4.21.5	Concern Statement: Prefer Concept 1 for Visitor Experience .....	34
4.21.6	Concern Statement: Concept 1 Adversely Impacts the Visitor Experience.....	35
4.21.7	Concern Statement: Avoid Visitor Impacts to KMC Authorized Patrons .....	35
4.21.8	Concern Statement: Concept 2 Reduces Confusion over Concept 1, Provides Visitor Familiarity.....	35
4.21.9	Concern Statement: Concept 4 Spreads Visitors Out More .....	36
4.22	Visual Impacts .....	36
4.22.1	Concern Statement: Concentration of Buildings Distracts from Visual.....	36

## List of Tables

<b>Table 1: Comment Distribution by Code .....</b>	<b>5</b>
<b>Table 2: Correspondence Signature Count by Organization Type.....</b>	<b>7</b>
<b>Table 3: Correspondence Distribution by Correspondence Type.....</b>	<b>7</b>
<b>Table 4: Correspondence Distribution by State.....</b>	<b>8</b>
<b>Table 5: Correspondence Distribution by Country.....</b>	<b>8</b>

## List of Appendices

Appendix A – Correspondence Index of Organizations

Appendix B – Correspondence Index by Code

Appendix C – Materials Provided During Civic Engagement

## 1 INTRODUCTION

Hawai'i Volcanoes National Park (HAVO) and the U.S. Geological Survey (USGS) led a civic engagement process to seek community input to consider and refine four initial design concepts for the proposed HAVO Disaster Recovery Project.

The intent of the project is to repair and/or replace critical park infrastructure and USGS-operated facilities and equipment damaged during the 2018 eruption and summit collapse of Kīlauea volcano. The project addresses potential future use of the Uēkahuna Bluff area and other park sites. Uēkahuna Bluff is an area of geologic, natural, and cultural significance and is regarded as sacred by Native Hawaiians and other groups.

Beginning in May 2018, the park and Kīlauea summit underwent a major change as magma drained from the chamber beneath Halema'uma'u Crater, and the caldera began to collapse, triggering 60,000 strong earthquakes and clouds of rock and ash that continued until early August. The seismic activity was primarily centered near the crater, and significantly impacted buildings in the immediate vicinity on Uēkahuna Bluff, including Jaggar Museum and the USGS-operated Reginald T. Okamura facility and equipment, resulting in the closure of the area. The 2018 eruption and caldera collapse were the most destructive eruptive events in Hawai'i in the last two centuries.

The results of an initial post-disaster assessment conducted in October 2018 found that significant investment would be necessary to make Jaggar Museum and the USGS Hawaiian Volcano Observatory–operated Reginald T. Okamura building safe to occupy and operational. Most importantly, the buildings are surrounded by fault lines and the area continues to subside on the crater side, undermining slope stability at the existing terraces and building foundations.

The focus of this planning effort is the repair, replacement, removal or relocation of the facilities and functions that were damaged at Uēkahuna Bluff. The project concepts present potential solutions to the loss of function at Uēkahuna Bluff and current overcrowding at Kīlauea Visitor Center (KVC), ranging from renovation of existing buildings to constructing new facilities elsewhere in the park. The existing KVC building is inadequate for current visitation due to its small size, and the closure of Jaggar Museum has exacerbated the overcrowding of KVC by concentrating all visitor contact in one location.

### 1.1 Civic Engagement

To slow the spread of COVID-19, civic engagement was conducted using as many methods as possible to allow public comment, but without the use of in-person public meetings. Comments on the project were accepted starting May 15, 2020, and the comment period ended June 15, 2020. The National Park Service (NPS) also implemented a dedicated phone line specifically to receive comments, request hard copies of the materials, or request a call back.

The NPS and the USGS will incorporate comments made during the Civic Engagement period to develop a single proposed alternative which will be carried forward in the planning process.

#### 1.1.1 Agency Outreach

On May 12, 2020, the NPS distributed letters to various agencies to invite agency participation in the civic engagement process. Agencies were encouraged to submit written suggestions, comments, and concerns regarding the project either online at the NPS's Planning, Environment and Public Comment (PEPC) website or by U.S. mail to the Office of the Superintendent.



### 1.1.2 Kūpuna Outreach

On May 12, 2020, the NPS distributed civic engagement letters via email or hard copy materials to the Kūpuna consultation group. In addition, phone calls were made to members of this group to further engage this group.

### 1.1.3 News Release and Planning, Environment and Public Comment Website

On May 12, 2020, the NPS issued a news release to areawide news organizations and posted project information including the civic engagement newsletter to the PEPC website. The news release and PEPC provided a project overview and invited the public to participate in the civic engagement process. Members of the public were invited to submit comments on the project through PEPC, U.S. mail, email, or via the project phone line. The materials that were distributed to the public can be found in Appendix C.

In addition to these outreach efforts, the news release was posted on social media, and NPS posted reminders about the comment period to encourage participation. The HAVO Superintendent and USGS HVO Scientist in Charge were interviewed by several local news outlets about the scope of the project.

## 1.2 Summary of Public Participation During Civic Engagement

One hundred and fifty-nine (159) pieces of correspondence from nine states were received during the civic engagement comment period. Individuals living in Hawai'i submitted 123 (approximately 78%) of those correspondences. The majority of comments received during this period expressed the following:

- Commenters provided suggestions on alternative uses for buildings or alternative suggestions such as taking pieces of one design concept and combining it with another or providing additional public facilities such as restrooms and equipment such as bike racks. .
- Expressed that the Uēkahuna Bluff is a sacred site and requested that the bluff be treated as such. Commenters requested that an area be set aside at this location for ceremonial purposes.
- Commenters expressed their preference for design concepts based on natural and/or cultural resource concerns and impacts on visitor use.
- Commenters expressed the need for USGS buildings to be separated from the visitor use areas and to be located close to the caldera.
- Commenters expressed a preference to reduce the footprint of new development and reuse already developed areas. Repurpose old buildings and sites for historical preservation or use as additional offices, equipment staging areas, or educational sites for public use. Incorporate space for alternative modes of transportation. Develop the new space with the intent to use for multiple purposes for the public and community members. Preserve the visual aesthetics of the natural areas.
- Commenters stated that NPS should involve the public with decisions and include cost of each alternative. Identify the limiting factors and include how alternatives were created.

- Commenters stated concerns with public safety for crowded parking areas, escape routes in case of emergency, congestion on the roads, and pedestrian safety.
- Commenters stated concerns with the visitor experience including clear signage to identify where everything is located within the park (because it is large). Clearly communicate interest points: hiking, educational center, historical areas, viewpoints, parking, and bathrooms.
- Historic Hawai'i Foundation provided comments and requested to be a consulting party for the future planning effort.

## 2 THE COMMENT ANALYSIS PROCESS

### 2.1 Definition of Terms

Primary terms used in the document are defined below:

**Correspondence:** A correspondence is the entire document received from the public—including individuals, organizations, government officials, and agency representatives. It can be in the form of a letter, comment card, or PEPC website comment form.

**Comment:** A comment is a portion of the text within a correspondence that addresses a single subject. It could include such information as an expression of support or opposition to a proposed activity, additional data regarding the existing condition, an opinion questioning a matter of policy, or an opinion regarding the adequacy of an analysis.

**Code:** A code is a grouping centered on a common topic or subject matter with which the public is concerned.

**Concern Statement:** Concern statements were developed to summarize the multiple issues represented by the comments.

### 2.2 Guide to this Document

This report is organized as follows:

**Content Analysis Report** – This is the basic report produced from PEPC that provides information on the numbers and types of comments received, organized by code.

**Civic Engagement Comment Summary** – This report summarizes the substantive comments received during civic engagement. These comments are organized by codes and further organized into concern statements. Comment text is presented as submitted which can include spelling errors. This text has not been edited.

**Correspondence Index of Organizations (Appendix A)** – This list identifies the commenters or authors by organization type.

**Index by Code (Appendix B)** – This list identifies the commenters or authors who commented on the listed topics, as identified by the codes used in this analysis.

### 3 CONTENT ANALYSIS

The NPS will use public and agency feedback to evaluate the design concepts presented to determine which concept; or variation of concepts, will be evaluated as the proposed action during the National Environmental Policy Act (NEPA) process. This report summarizes approximately 688 comments taken from 158 public correspondences received during civic engagement. Comments were categorized into 79 topics identified by unique codes. For the purpose of this report, all comments relevant to the proposed design concepts were coded.

The distribution of comments by code is provided in **Table 1**. If no comments were received for a code, that code will not show up on this list. For example, code AL203 includes alternative building use suggestions for Design Concept 3 (in Appendix B). However, there were no comments suggesting alternative uses for buildings for Design Concepts 1, 2, or 4, therefore, there are no codes for these three design concepts.

**Table 1: Comment Distribution by Code**

Code	Description	No. of Comments	Percent of all Comments
AL100	Alternative Suggestions	51	8.5%
US100	USGS Building	50	8.4%
VE104	Visitor Experience Concept 4	35	5.9%
VE103	Visitor Experience Concept 3	23	3.9%
AL200	Alternative Uses for Buildings	21	3.5%
VE101	Visitor Experience Concept 1	20	3.4%
VE102	Visitor Experience Concept 2	18	3.0%
GNS100	General Project Support	18	3.0%
NR101	Natural Resource Concerns Concept 1	15	2.5%
VE100	Visitor Experience	15	2.5%
NR103	Natural Resource Concerns Concept 3	14	2.3%
CC100	Ethnographic Concerns	13	2.2%
GN300	Prefer Concept 3 General Comment	13	2.2%
NR102	Natural Resource Concerns Concept 2	13	2.2%
NR104	Natural Resource Concerns Concept 4	13	2.2%
NR100	Natural Resource Concerns	12	2.0%
CE100	Civic Engagement	12	2.0%
ED100	Education and Interpretation	12	2.0%
RM100	Request for materials	11	1.8%
TR102	Traffic Improvements Concept 2	11	1.8%
GN200	Prefer Concept 2 General Comment	11	1.8%
PD101	Pedestrian Safety and Access Concept 1	8	1.3%
GNC100	General Project Concerns	8	1.3%
GN100	Prefer Concept 1 General Comment	8	1.3%

Code	Description	No. of Comments	Percent of all Comments
TR101	Traffic Improvements Concept 1	7	1.2%
TR201	Traffic Increases Concept 1	7	1.2%
PK200	Parking Increased	7	1.2%
PE104	Park Entrance Concept 4	6	1.0%
GN400	Prefer Concept 4 General Comment	6	1.0%
MT100	Operation and Maintenance	6	1.0%
ED102	Education and Interpretation Concept 2	6	1.0%
CR100	Cultural Resource Concerns	6	1.0%
AL104	Alternative Suggestions Concept 4	6	1.0%
TR100	Traffic Improvements	5	0.8%
ED104	Education and Interpretation Concept 4	5	0.8%
PK203	Parking Increased Concept 3	5	0.8%
PD103	Pedestrian Safety and Access Concept 3	5	0.8%
AL103	Alternative Suggestions Concept 3	5	0.8%
PE100	Park Entrance	5	0.8%
PK100	Parking Reduced	5	0.8%
PK202	Parking Increased Concept 2	4	0.7%
ALT300	Alternative Trails Suggestions	4	0.7%
PE102	Park Entrance Concept 2	4	0.7%
AL102	Alternative Suggestions Concept 2	4	0.7%
ALT304	Alternative Trails Suggestions Concept 4	4	0.7%
PE103	Park Entrance Concept 3	3	0.5%
PD100	Pedestrian Safety and Access	3	0.5%
OS100	Out of Scope	3	0.5%
TR204	Traffic Increases Concept 4	3	0.5%
PE101	Park Entrance Concept 1	3	0.5%
TR104	Traffic Improvements Concept 4	3	0.5%
CR103	Ethnographic Concerns Concept 3	3	0.5%
PD104	Pedestrian Safety and Access Concept 4	3	0.5%
CO103	Project Cost Concerns Concept 3	3	0.5%
MT101	Operation and Maintenance Concept 1	2	0.3%
CR104	Cultural Resource Concerns Concept 4	2	0.3%
TR103	Traffic Improvements Concept 3	2	0.3%
CO100	Project Cost Concerns	2	0.3%
TR200	Traffic Increases	2	0.3%
PK204	Parking Increased Concept 4	2	0.3%
CO104	Project Cost Concerns Concept 4	2	0.3%



Code	Description	No. of Comments	Percent of all Comments
CO102	Project Cost Concerns Concept 2	2	0.3%
AL101	Alternative Suggestions Concept 1	1	0.2%
MT103	Operation and Maintenance Concept 3	1	0.2%
CC103	Ethnographic Concerns Concept 3	1	0.2%
ED101	Education and Interpretation Concept 1	1	0.2%
ED103	Education and Interpretation Concept 3	1	0.2%
CR102	Cultural Resource Concerns Concept 2	1	0.2%
TR203	Traffic Increases Concept 3	1	0.2%
VI103	Visual Impacts Concept 3	1	0.2%
AL203	Alternative Building Use Suggestions Concept 3	1	0.2%
MT102	Operation and Maintenance Concept 2	1	0.2%
VI101	Visual Impacts Concept 1	1	0.2%
CO101	Project Cost Concerns Concept 1	1	0.2%
ALT301	Alternative Trails Suggestions Concept 1	1	0.2%
VI104	Visual Impacts Concept 4	1	0.2%
CR101	Cultural Resource Concerns Concept 1	1	0.2%
PD102	Pedestrian Safety and Access Concept 2	1	0.2%
PK201	Parking Increased Concept 1	1	0.2%

The majority of correspondence received was from unaffiliated individuals (**Table 2**).

**Table 2: Correspondence Signature Count by Organization Type**

Organization Type	Correspondences
Civic Groups	3
Conservation/Preservation	1
County Government	1
Federal Government	1
Non-Governmental	2
Unaffiliated Individual	151

**Table 3** shows the distribution of how correspondence was received.

**Table 3: Correspondence Distribution by Correspondence Type**

Type	Number of Correspondences
Web Form	113
E-mail	22
Park Form	10
Phone Tree	11
Letter	3

With HAVO being located in the State of Hawai'i, the majority of correspondence was received from commenters within the state (**Table 4**)

**Table 4: Correspondence Distribution by State**

State	No. of Correspondences	Percent of all Correspondences
HI	123	77.4%
UN	21	13.8%
AZ	4	2.5%
OR	2	1.3%
CA	2	1.3%
CO	2	1.3%
WA	1	0.6%
TN	1	0.6%
OH	1	0.6%
KS	1	0.6%

The majority of correspondence received was from the United States. One comment was received from Great Britain (**Table 5**).

**Table 5: Correspondence Distribution by Country**

State	No. of Correspondences	Percent of all Correspondences
GBR	1	0.6%
USA	157	99.4%

## 4 CIVIC ENGAGEMENT COMMENT SUMMARY

### 4.1 General Alternative Suggestions

#### 4.1.1 Concern Statement: Event Space Suggestion

A new event space structure could be built and used for park service events and to create an additional revenue source.

##### **Representative Comment(s)**

Correspondence Id: 102 Comment Id: 904119

Comment Text: Build a new structure for the Park Service, educational exhibits and event space (second floor with views of the park). The one aspect the park is missing is an event space (potential revenue stream). An event space can be used by schools, local community, and for celebrations like weddings, birthdays, graduations, etc. Outsource catering, floral, equipment and event staff at the client's expense.

#### 4.1.2 Concern Statement: Multi-Storied Buildings (parking, visitor center)

A multi-story parking structure or multi-story visitor center could reduce the environmental footprint of the building and parking congestion.

##### **Representative Comment(s)**

Correspondence Id: 102 Comment Id: 904116

Comment Text: I believe a multi-story parking structure can be accommodated near the visitor center. I know this would be an eyesore to the locals, but for the sake of the environment and to eliminate parking congestion, this is the best solution.

Correspondence Id: 145 Comment Id: 904720

Comment Text: It could be two stories with an elevator to reduce the footprint of the building.

#### 4.1.3 Concern Statement: Order of Construction

Opening public access and an interpretive overlook on the old Jaggar footprint is of higher priority before building a visitor center.

##### **Representative Comment(s)**

Correspondence Id: 3 Comment Id: 904165

Comment Text: Begin with working on the interpretive overlook on the old Jaggar footprint 1st. Complete this before a new visitor center is built. Give visitors a chance to view the summit!

Correspondence Id: 34 Comment Id: 904241

Comment Text: I'm not sure in what order things are going to be done, but public access (by trail and vehicle) to the former Jaggar museum site would be a top priority for me. Hopefully this could be done first before the more expensive new visitor center and USGS field station.

#### 4.1.4 Concern Statement: Bicycle Facilities

Include bicycle infrastructure within the visitor center design to include: bicycle trails, parking, and a permanent space for bike rentals and repairs.

**Representative Comment(s)**

Correspondence Id: 12   Comment Id: 904171

Comment Text: Please remember to include bicycle parking facilities at the visitor center.

Correspondence Id: 60   Comment Id: 904314

Comment Text: I'd like to request that consideration be given to new and/or improved bicycling trails and storage racks. I'd like to suggest a concession space be allotted at the visitor center for bike rentals and repairs.

**4.1.5   Concern Statement: Develop a Shuttle System**

Create a shuttle bus system within the park to reduce traffic congestion.

**Representative Comment(s)**

Correspondence Id: 18   Comment Id: 904194

Comment Text: Get people out of their cars as soon as possible and use as many shuttle buses as you need. This should be done no matter which Concept is chosen. Take a leaf out of the South Rim of the Grand Canyon (and now Yosemite, too). Where are those hydrogen buses?

Correspondence Id: 18   Comment Id: 904195

Comment Text: Traffic on Crater Rim drive should be minimized. Use shuttle buses to Thurston Lava Tube and other over-looks and view areas (e.g. Devastation Trail).

Correspondence Id: 38   Comment Id: 904258

Comment Text: There should be a shuttle bus to transport people down and up Chain of Craters Road to limit the number of vehicles on this roadway. Rental cars should not be allowed beyond the visitor center.

**4.1.6   Concern Statement: Theatre**

Hawai'i Volcanoes National Park is a highly visited spot on the island, and an IMAX theater can be used for both educational videos and as an additional source of income.

**Representative Comment(s)**

Correspondence Id: 31   Comment Id: 904221

Comment Text: Recognizing that HVNP is the most visited location on the Big Island I would love to see the NPS build a world class facility (IMAX possibly?) that really showcases the science of the volcano as well as the history and the history of HVNP and its community. A world class facility, rather than just a rebuild of what was there before, would be a great economic stimulus for the Volcano, HI community. That being said, I understand that budgets are tight and money might not be available for a bigger project than currently proposed (maybe it could be designated as the Patsy Mink or Daniel Inouye Hawaii Volcano National Park Museum and or Visitor Center and consequently access to more funds?)

Correspondence Id: 35   Comment Id: 904242

Comment Text: If you are going to build a new theater, you should design and build for an IMAX size theater. That way the IMAX theater could also be rented out as an additional source of income for groups or the public. It could also play hollywood films on weekends/nights.

#### 4.1.7 Concern Statement: Alternate Locations for Visitor Center

Build a new visitor center within a less crowded area of the park.

##### **Representative Comment(s)**

Correspondence Id: 18 Comment Id: 904197

Comment Text: Now is the time to buy up, or lease, the lands where the active flow was and build a VC near Pahoa. That new park area could be accessed from Hilo on the Keaau-Pahoa Road, and a nice VC built in or near Pahoa, which instead of a last-ditch, last-stop, village becomes a gateway to the park with very real commercial possibilities.

Correspondence Id: 67 Comment Id: 904322

Comment Text: I think it would be good to have a small visitor center part way down Chain of Craters Road. It is uncrowded, has less vog, and needs more of a park presence.

#### 4.1.8 Concern Statement: Sustainability

Prioritize all new buildings and designs around reducing their carbon footprint and energy consumption.

##### **Representative Comment(s)**

Correspondence Id: 31 Comment Id: 904224

Comment Text: Hopefully all buildings would be constructed to LEED certified standards using materials and designs that create the least amount of impact on the Park and environment.

Correspondence Id: 119 Comment Id: 904566

Comment Text: This planning effort should do everything possible to push forward in conservation and a reduced carbon footprint. The use of PV or alternative energies should be prioritized for all facilities and included in the details for all concepts to jump the park forward in energy conservation.

Correspondence Id: 145 Comment Id: 904735

Comment Text: Will future alternatives look at earth cooled buildings? The carbon footprint would have to be determined if there is a savings over the life cycle of the field station. The footprint on the landscape and protecting park resources is a key evaluation criterion. Concept 4 appears to offer the most climate friendly benefits: infrastructure, water, electric and cell tower are close to the ball field and therefore appear to have a lower carbon footprint.

#### 4.1.9 Concern Statement: Alternative Parking Locations

Build parking within areas that have already been disturbed to reduce additional impacts on native vegetation and provide a safer area for pedestrian travel.

##### **Representative Comment(s)**

Correspondence Id: 142 Comment Id: 904678

Comment Text: If future parking is needed, could that be placed on the footprint of the removed Okamura and Geochemistry Annex? This would seem have less impact of the natural vegetation on the other side of the Crater Rim Drive and eliminate some of the unsafe pedestrian crossing of that road.

#### 4.1.10 Concern Statement: Alternative Recreation Suggestions

Create additional areas for recreational use within the park.



#### 4.1.10.1 Representative Comment(s)

Correspondence Id: 35 Comment Id: 904246

Comment Text: Adding a Disc Golf course through a forested area would make a nice addition to the park. The cost for a course is small (only buying 18 disc golf baskets at \$400 each, which could be sponsored by local businesses to offset that cost). It would increase people coming to the park specifically to play the course. A small fee to play the course would easily pay for the course installation and maintaining (clearing brush etc) after a few years. Disc golf is a hugely popular sport that has spread across the USA with multiple courses in each state, and around the world. There exists a professional disc golf association with over 40000 members. As well as hundreds of thousands of players nationwide. It is an easy to play game and can be enjoyed by anyone age 6 to 96.

Correspondence Id: 91 Comment Id: 904466

Comment Text: I would like to see another campground in the park as well. More places to stop, have a picnic and camp. But I don't know if this is on the current agenda.

Correspondence Id: 122 Comment Id: 904574

Comment Text: To destroy the KMC ballfield would seem like a waste of a recreational space that already exists... I would think markets recreation or outdoor activities would be a much better use for that area and would not make a giagantic footprint that is currently there. How about a softballll league for the Park?

#### 4.1.11 Concern Statement: Restroom Improvements

Improve restroom facilities throughout the park by increasing signage, facilities, and regular maintenance.

##### Representative Comment(s)

Correspondence Id: 81 Comment Id: 904395

Comment Text: Improving all restrooms throughout the park is desperately needed. Increase availability of portable toilets at other locations. As long as they are cleaned in a timely manner they provide a good service instead of the bushes. Indicate locations on the park map if they are not already there. Many people don't realize where the restrooms are at Nahuku and use a bush before they find the restroom. Improve signage?

Correspondence Id: 88 Comment Id: 904456

Comment Text: Bathroom facilities in the park need major improvement. Consider adding portable toilets at major parking lots such as Kilauea Iki, Puu Pua'i, keep them at Devastation, etc. Then make sure they are listed on the park map and have good signage. We see a lot of use of the 'bushes' by visitors who are at a location without bathrooms, or where the location is not obvious, such as Nahuku.

Correspondence Id: 142 Comment Id: 904692

Comment Text: Another concern or question is if the new Visitor Center will have restrooms. It seems like a very long walk from east side parking to get to the west side restrooms. Please consider these essential visitor needs.

#### 4.1.12 Concern Statement: Viewing at Bluff

Update overlook at the old Jaggar Museum to include covered shelters, benches with views unobstructed by standing visitors, and an improved safety wall.

**Representative Comment(s)**

Correspondence Id: 68 Comment Id: 904323

Comment Text: My suggestion for the overlook at the old Jaggar Museum site is a wall that is higher than the existing so that visitors do not stand on the wall to try and improve their view.

Correspondence Id: 81 Comment Id: 904398

Comment Text: The proposals for the Jagger area seem workable and even increase the viewing opportunity. A covered area with a few benches in the back would be nice up there.

Correspondence Id: 142 Comment Id: 904677

Comment Text: Improving the second area would be greatly beneficial for the public. Perhaps that viewing area could be designed for a more silent/meditative experience. It needs to offer areas for people to stand as well as benches for people to sit with unobstructed view (clear from people standing front of them). It should be designed with a cliff-side safety barrier that will not allow for sitting or standing on it - as was always a safety concern at existing overlook at Jaggar Museum.

**4.2 Alternative Suggestions Concept 2****4.2.1 Concern Statement: Ideas to Improve Concept 2**

Update Concept 2 to include: inclusion of the education center, covered picnic areas, an additional kiosk entrance with a roundabout, and USGS backcountry office near KMC.

**Representative Comment(s)**

Correspondence Id: 126 Comment Id: 904584

Comment Text: I would select Concept #2 with following amendments: The portions of the Concept I particularly like are the inclusion of the Education Center, the covered picnic area near VAC, and the 2 kiosk entrance station and roundabout. I do not like the USGS near the backcountry office. The following amendments to the concept are proposed: The USGS portion of the concept would follow Concept # 3 and be located near KMC.

**4.3 Alternative Suggestions Concept 3****4.3.1 Concern Statement: Ideas to Improve Concept 3**

Update Concept 3 to include: benches, picnic areas, and restrooms.

**Representative Comment(s)**

Correspondence Id: 1 Comment Id: 904141

Comment Text: I like the idea of a picnic area which concept 3 doesn't have

Correspondence Id: 2 Comment Id: 904148

Comment Text: Areas near parking with benches and picnicking and restrooms would keep folks close to their cars and away from the facilities when congregating to eat, look at maps, take care of kids, etcetera.

## 4.4 Alternative Suggestions Concept 4

### 4.4.1 Concern Statement: Ideas to Improve Concept 4

Update Concept 4 to include: shuttle buses from the main entrance, commemoration of the ballfield's historical significance, and visitor services that are kept inside a facility staffed with park rangers.

#### **Representative Comment(s)**

Correspondence Id: 18 Comment Id: 904193

Comment Text: Concept 4: People can enter (current main entrance) and park at the old VC and take a shuttle bus to the new VC. And, shuttle from the new VC to Jaggar. OR, they can enter off of Highway 11 (new entrance to park) and park right there.

Correspondence Id: 87 Comment Id: 904445

Comment Text: I do not see the KMC ball field used terribly often now, but I respect that the location has historical significance so perhaps if this location is chosen, some commemoration of the ballfield historical significance should be incorporated.

Correspondence Id: 142 Comment Id: 904683

Comment Text: I propose that part of the existing KVC be repurposed to include a separated Education Center for school groups (in the section where the current biological exhibits are) yet keep the lobby for the Orientation Center. This visitor service should be offered in a comfortable facility, not outdoor in the cold and rain nor right beside the very noisy restrooms (this is the current function of the KVC lanai and is it not conducive to a pleasant experience). The indoor KVC lobby should be staffed by multiple Park Guides/Rangers (with the assistance of multiple park volunteers) as to minimize the time visitors need to wait in line and therefore relieve parking congestion.

## 4.5 Alternative Uses for Buildings

### 4.5.1 Concern Statement: Keep the Annex/Alternative Uses

Repurpose the annex building for use as a USGS field station, administration building, or visitor building.

#### **Representative Comment(s)**

Correspondence Id: 83 Comment Id: 904416

Comment Text: The annex building is largely undamaged. For a few hundred thousand dollars, the building can be made habitable for multiple administrative and visitor uses into the future. I strongly encourage the retention of the annex, even after the USGS field station and other summit area rebuilding occurs. It seems wasteful to take down a functioning building, especially since in the concept of the bluff, this would be the only 4-walled, weatherproof, securable building in the area. Here are some potential uses now and into the future, and I am sure there are more: \*For USGS: staging area for inner caldera and upper Kau Desert fieldwork, campaign deployments by USGS and international scientists conducting experiments in the summit area, eruption response, UAS launches, future platform for all manner of cameras and instrumentation yet to be developed (an example is a housing for a million dollar absolute gravimeter that has to be as near to Halema'uma'u as possible in a climate controlled and powered space). Other technological advances will take advantage of a building proximal to the caldera rim and the inner portions of Halema'uma'u. I can foresee the need for instrument siting in the future that needs power and internet and security. If the annex is gone, there may be pressure to construct a

small new building or park temporary trailers - less than idea. Yes, USGS will have a new field station, but a perch within feet of real time viewing of the inner caldera will be scientifically important in ways we may not even now know. It is the best place to view an eruption on the caldera floor or uppermost SWRZ. Views of future Mauna Loa eruptions will be ideal from this vantage, as they were in 1984. NPS will want cameras here, it may also be a place for media events, VIP tours, etc. A building will be much appreciated as support for all those activities. \*For NPS: NPS rangers and other staff working the visitor overlook will need a place out of the weather, a place to stage SAR missions and law enforcement actions. NPS can use a forward cache of gear and in the event of a eruptive crisis, or an incident that blocks the road back to the main KVC and admin area, this will become even more useful. It can also be a space for visitor services: bookstore, exhibits, first aid station, etc.

Correspondence Id: 87 Comment Id: 904446

Comment Text: In either of these scenarios, concept 2 or 3, HVO should be permitted to continue using the Uēkahuna Bluff Annex building. Continued use of the Uēkahuna Bluff Annex building would ensure that HVO has eyes on Halema'uma'u in Kīlauea Caldera. This is necessary to evaluate volcanic hazards in the event of rapidly changing summit conditions, and rapidly communicate information on those hazards to the public (especially visitors and nearby residents in Volcano and the Golf Course).

Correspondence Id: 53 Comment Id: 904350

Comment Text: We would like to emphasize that we believe the HVO Annex Building should not be demolished. We suggest the HVO annex can be repurposed to enable USGS scientists, HVNP interpretive staff, Practitioners, artists, and others to interact with the public. There may also be space for additional displays that might include historical geoscience instruments, interactive displays, computer models, etc.

#### **4.5.2 Concern Statement: Reuse Jaggar Museum or Pieces of Jaggar Museum**

Repurpose the historic Jaggar Museum as a covered pavilion for visitors.

##### **Representative Comment(s)**

Correspondence Id: 142 Comment Id: 904676

Comment Text: It rains a lot over there and the winds are usually extraordinarily strong. The public overlook needs some protection from the elements. Remember how the Rangers-on-duty and the public would huddle against the building to get out of the elements when watching the volcanic activity? Consider incorporating the walls of the historic Jaggar Museum into a covered area that can be used for interpretive exhibits, interpretive presentations, cultural demonstrations, or public gathering/sitting. If possible, remove the doors and windows and perhaps the caldera-facing wall and use the remainder of the historic structure for the purposes outlined above.

Correspondence Id: 124 Comment Id: 904581

Comment Text: Further, I want to urge the NPS to consider how to preserve as much of the structures as Uwekahuna Bluff as is practical. The Jaggar building at least is on the historic register and may even pre-date the park itself. The idea of an open-air pavilion at the Jaggar site is a nice idea if the structure really is not salvageable, but I would hope that all/most of it could be re-used, even if it repurposed in a different way.

Correspondence Id: 91 Comment Id: 904464

Comment Text: Is there going to be anything done with the Jaggar Museum? Is it possible to move and preserve this historic building elsewhere in the park?

### 4.5.3 Concern Statement: Ideas for Using Okamura

Repurpose the Okamura building and keep portions of the facilities for a laboratory or additional educational/visitor areas.

#### **Representative Comment(s)**

Correspondence Id: 23 Comment Id: 904205

Comment Text: Without knowing the extent of the damage, it seems a shame to have to demolish the Okamura building. The top viewing tower was a primo site from which to observe the caldera (and for Friday night happy hours with Reggie and Jack Lockwood). I wonder if the basement at least could be saved and kept as a subsurface site for laboratory facilities and storage of monitoring equipment. With the originally expensive excavation for the building (I was there when it was built), it's a shame to have to fill it back in with dirt when it might have good use as an underground facility.

Correspondence Id: 70 Comment Id: 904354

Comment Text: Regarding the volcano observation center offices and tower, I wonder if there is any historic value in keeping some of the interior units or equipment for educational purposes?

### 4.5.4 Concern Statement: Other Alternatives Raised for Uses

Alternative uses proposed for other buildings.

#### **Representative Comment(s)**

Correspondence Id: 109 Comment Id: 904521

Comment Text: Are there options for using the ohia wing for visitor education/enrichment/ or a KVC annex?

Correspondence Id: 77 Comment Id: 904378

Comment Text: I believe the present facility used as the Educational Center continue to be used in the housing area as it is quiet and away from tourist distractions.

Correspondence Id: 58 Comment Id: 904311

Comment Text: Is the current research area (the older buildings behind the new Back Country office) able to be renovated or rebuilt to accommodate USGS?

## 4.6 Alternative Trail Suggestions

### 4.6.1 Concern Statement: General Make More Trails

There is a need for shorter and easily accessible trails that are close to parking areas.

#### **Representative Comment(s)**

Correspondence Id: 102 Comment Id: 904492

Comment Text: Trail Access: Some of our guests' time is limited, but they want to experience as much as they can in a short period of time, so maybe create new viewpoints/trails that are not too far from the parking area and easy to access with highlights of the park.



#### 4.6.2 Concern Statement: Crater Rim

There is a need for a connector trail between Crater Rim Trail and the visitor center.

##### Representative Comment(s)

Correspondence Id: 36 Comment Id: 904253

Comment Text: I would also propose a new trail from the visitor center directly to the Crater Rim trail - the proximity of the visitor center to the unspoiled crater rim (no volcano house) is one the biggest pros for the location of the concept-4-visitor center.

#### 4.6.3 Concern Statement: Concept 4 Trail Connections

There is a need for an accessible trail that connects the caldera viewing areas to the visitor center.

##### Representative Comment(s)

Correspondence Id: 142 Comment Id: 904689

Comment Text: In addition to Jaggar Museum showcasing the operations of HVO, the original and primary function of that facility was as a caldera viewing area. In the spirit of the relocating the functions lost at Uekahuna, an accessible trail system should connect the new Visitor Center to a series of caldera viewing areas. One viewing area designed for a more silent/meditative experience, and another designed for a larger capacity crowd with exhibits and a well-planned interpretive presentation space. Both viewing areas need to offer areas for people to stand, and both need to offer benches for people to sit with unobstructed view (clear from people standing front of them). Both should be designed with a cliff-side safety barrier that will not allow for sitting or standing on it - as was always a safety concern at Jaggar Museum. These trails and viewing areas should be planned, financed, and constructed concurrently with the New Visitor Center. Otherwise the opportunity for funding, compliance, and construction might be lost.

Correspondence Id: 119 Comment Id: 904558

Comment Text: Concept Four: USGS/New HAVO Visitor Center at Ball field • This concept should include a trail to cross the CRD and link visitors with the Crater Rim trail to provide walking access to at least one new overlook on the rim. It is a critical part of the success of this concept to link visitors with the resource. A slight modification of the existing rim trail could offer messages on Halemaumau and Pele and Hawaiian protocol embedded in the walkway, (similar to the directions of the tribes embedded along the trail at Mather Point at the Grand Canyon). HAVO is a culturally sacred site. Using many languages would be great as well. HAVO receives many international visitors.

### 4.7 Ethnographic Concerns

#### 4.7.1 Concern Statement: Reduce the footprint

Do not build new buildings, this land is sacred and should be protected.

##### Representative Comment(s)

Correspondence Id: 62 Comment Id: 904317

Comment Text: We must bring to the forefront and always remember how our kupuna traditionally viewed this wahi pana. Only specialized activities took place here - ceremony, specific types of gathering. The place, the 'Aina dictates and guides the activities of kanaka, not the other way around. Any type of imposition of kanaka over sacred wahi pana will eventually be met with disaster - Jaggar, HVO station, Kapoho ponds, Waha'ula. He alii ka 'aina, he kauwa ke kanaka. Let us lessen the footprint of kanaka to

this area. Even if it means less revenue for the Park, it will mean restorative health for our beloved Kilauea.

Correspondence Id: 84 Comment Id: 904417

Comment Text: The park is a sacred place, to see more forest removed by man to build buildings that are not needed and be disrespectful to the significance of this area would be wrong and should not be done. The park service is there to protect and preserve. Protect and preserve the land and what is there, not to build more unsightly buildings. Preserve Kilauea in its natural state. Preserve Kilauea in what it is now. Changing this in any way will not be preservation. I don't choose any of these as every plan has building new buildings in it.

#### **4.7.2 Concern Statement: Building Design Should Reflect Hawaiian Culture**

Incorporate Hawaiian culture into new buildings and redesigns.

##### **Representative Comment(s)**

Correspondence Id: 46 Comment Id: 904285

Comment Text: -New buildings/re-design should be designed by local A/E to create a "sense of place." Doesn't want to see another "haole" looking building (e.g. the 30's, 40's historic buildings at the summit), but rather something new that references Hawaiian culture such as Imi Loa center and the Hawaiian Language building at UH-Hilo.

#### **4.7.3 Concern Statement: Ceremonial Use Should be Incorporated**

New designs of the visitor area should incorporate Hawaiian culture and protect ceremonial uses.

##### **Representative Comment(s)**

Correspondence Id: 85 Comment Id: 904429

Comment Text: The Park should consider carefully a new layout for viewing at Uēkahuna. Obviously, safety issues will determine the general footprint, but I would hope that, besides accommodating tourists, the new design would allow space separate from the visitor flow and dedicated to Hawaiian cultural/ceremonial use, in recognition that Uēkahuna is a wahi pana, a sacred place.

Correspondence Id: 113 Comment Id: 904529

Comment Text: Please consider making the former site of Jagger Museum and the Hawaiian Volcano Observatory into a designated permanent spot for cultural practitioners to gather. For many years Uēkahuna has been an important space for Hawaiians to offer chant, hula, and gifts to Pele and her family. This seems to be a good opportunity to reclaim a culturally important space for their use. As the highest point of the pali around Kaluapele, and because of the significant importance of Uēkahuna and surrounding wahi pana to Hawaiian history, this is an appropriate area to designate as a cultural site. It is vitally important that accommodations continue to expand that allow native Hawaiians to visit Kaluapele not just for ceremony and gathering rights, but also even to just maintain familiarity and connection with the land itself. Pele is literally family to many Hawaiians. It is difficult to maintain a good relationships with one's family when there are many limitations and restrictions on how and when one is allowed to visit them.

#### 4.7.4 Concern Statement: Sacred Place

The parks needs to be treated with respect, since it is a scared place for native Hawaiians.

##### Representative Comment(s)

Correspondence Id: 146 Comment Id: 904754

Comment Text: This is the land of Pelehonuamea and her family. Besides volcanic activity, we've also been subjected to transformational catastrophic earthquakes, land subsidence, tsunamis, and landslides. There is no way of predicting future volcanic activity; its scale, scope, location, or duration are unknowns. Building "Bigger and Better" in a place famed for volcanic hazards, as we've seen (and not necessarily learned) is NOT the best course of action. With increased visitation having pushed us past our carrying capacity, we've witnessed destruction of resources, increasing helicopter noise, traffic jams, inability to accommodate vehicular parking, and perhaps the most disturbing, the inability of Native Hawaiian cultural practitioners to conduct ritual when and where they desire. The late Edward Kanahele once said, "We have to go at midnight so we aren't bothered by tourists." During this time of pandemic, of economic upheaval, and of great uncertainty, we must have the foresight and fortitude to at last do what's right for the land, for Native Hawaiian practitioners, and for all who practice aloha 'āina on our 'āina aloha.

Correspondence ID: 149 Comment ID: 904763

Comment Text: The park is a sacred place, to see more forest removed by man to build buildings that are not needed and be disrespectful to the significance of this area would be wrong and should not be done. The park service is there to protect and preserve. Protect and preserve the land and what is there, not to build more unsightly buildings. Preserve Kilauea in its natural state. Preserve Kilauea in what it is now. Changing this in any way will not be preservation. I don't choose any of these as every plan has building new buildings in it. How can you build more buildings when you can't even upkeep and preserve what is already there.

#### 4.8 Ethnographic Concerns Concept 3

##### 4.8.1 Concern Statement: Prefer this Concept

This area is a sacred site, where ceremonial practices should be protected from the increased traffic of tourists.

##### Representative Comment(s)

Correspondence Id: 75 Comment Id: 904373

Comment Text: Of all for plans, #3. Least amount of impact. It's a scared site and should be treated as such. I understand that visitors contribute to the functioning of this site. as a Kanaka, I, at times fell very "congested" when accessing this sacred site and being surrounded by "visitor" who want to "ease-drop" on what's going on. Ruines the mana flow that is trying to be achieved.

#### 4.9 Civic Engagement

##### 4.9.1 Concern Statement: Request for Further Information in the Process

Include narratives of how concepts were developed and identify trade-offs for each concept.

**Representative Comment(s)**

Correspondence Id: 53 Comment Id: 904349

Comment Text: We would respectfully suggest that future narratives include how the concepts were developed. What stake holders had input to the process, what are the currently understood trade-offs. The amount of work that has gone into these concepts is evident! It would be valuable to share some of that process with the community you are soliciting for input. For example, is there a Concept that appeals more to HVNP interpretative staff? What trade-offs do the scientists and staff see between the different concepts?

**4.9.2 Concern Statement: More Communication Needed**

Increase the ability for the community to give input so that Hawaiian culture can be intentionally incorporated into the project.

**Representative Comment(s)**

Correspondence Id: 69 Comment Id: 904333

Comment Text: I sit on the Kupuna Council for HAVO and was disappointed that we could not have had at least a ZOOM meeting to discuss these ideas with the kupuna. I feel you will not have enough public or cultural comments for these projects due to the nature of review and submission. These are my personal comments and no reflection of my employer agency.

Correspondence Id: 115 Comment Id: 904534

Comment Text: The National Park Service must - service - the Hawaiian community more than it has historically done. It must be proactive in seeking input from, and then effectuating the priorities of, the Hawaiian community regarding all matters; not only related to the disaster recovery project - short-term - but all matters into the future - long-term. Since its start in Hawai'i, in my opinion, the NPS has too often operated under a continental, "What is good for Yosemite is good for Hawai'i" mentality. That has to stop. That mentality focuses on the visitor industry being the cash cow that supports NPS operations. That is not true. If the NPS scaled down the size of preparations for tourists ie parking for exhaust-spewing buses and rental cars it would be better for the aina. Most importantly though, is the idea that interpretative efforts must be planned for and implemented through a culturally Hawaiian lens. Hawaiians, a living culture, must not be museum-ized by the NPS. The Hawaiian community must be participatory in all aspects of the process, subsequent action plans and actions.

Correspondence Id: 108 Comment Id: 904513

Comment Text: It must be noted that the park's communication with the neighboring community is significantly lacking. The community's hospitality, food, retail, art and cultural establishments provide a positive blend of the park's purpose with a vibrant and welcoming community.

**4.9.3 Concern Statement: Request to be a Consulting Party**

Include the Historic Hawaii Foundation as a consulting party to the NPS to preserve and highlight Hawaiian culture.

**Representative Comment(s)**

Correspondence Id: 140 Comment Id: 904630

Comment Text: Historic Hawai'i Foundation is a statewide nonprofit organization established in 1974 to encourage the preservation of sites, buildings, structures, objects and districts that are significant to the history of Hawai'i. HHF is a consulting party to the National Park Service pursuant to the implementing regulations of the National Historic Preservation Act (NHPA) at 36 Part 800.2(c)(5) as an

organization with a demonstrated interest in the undertaking and a concern for the effects on historic properties. In addition to participating in the current planning effort, HHF also affirms that it will be a consulting party to NPS as part of the future Section 106 consultation.

## **4.10 Project Cost Concerns**

### **4.10.1 Concern Statement: Costs Would Influence Preference**

Include initial and long-term maintenance costs for each concept.

#### **Representative Comment(s)**

Correspondence Id: 53 Comment Id: 904348

Comment Text: An important factor for evaluating the different Concepts is cost. It is clear that detailed costs can not have been worked out yet, however even a simple qualitative discussion, both initial costs and long-term maintenance costs would have been valuable. Our guess, noted above, is that the largely co-located infrastructure proposed in Concept 1 would have both the lowest initial and long-term costs. It would have been helpful to have even qualitative cost comparisons between the concepts (WAG's are better than no information at all).

### **4.10.2 Concern Statement: Concept Costs**

Identify all construction and project costs for each concept.

#### **Representative Comment(s)**

Correspondence Id: 121 Comment Id: 904570

Comment Text: Concepts 2 and 4 require less construction and overall building and considering funds needed that seems wise to me.

Correspondence Id: 144 Comment Id: 904706

Comment Text: Also the longer realignment of Crater Rim seems wasteful of green space and the longer length of new roadway is probably more expensive

Correspondence Id: 100 Comment Id: 904484

Comment Text: I support Concept 3, with qualifications, for the following reasons: I believe the changes to the existing infrastructure would be minimal, resulting in less time and expense to complete the project in the KVC vicinity.

Correspondence Id: 121 Comment Id: 904570

Comment Text: Concepts 2 and 4 require less construction and overall building and considering funds needed that seems wise to me.

## **4.11 Cultural Resource Concerns**

### **4.11.1 Concern Statement: New Information on Sites**

Include cultural understanding of these sacred sites, as not all historically important areas have archeological evidence of their importance.

**Representative Comment(s)**

Correspondence Id: 113 Comment Id: 904530

Comment Text: As further evidence of the cultural importance of Uēkahuna as a sacred site, I would like to inform you that it is possible that Uēkahuna was at one time the site of a heiau for Pele. In the 1920's Superintendent Boles believed that Uēkahuna formerly had a heiau on top of it, though it isn't apparently known why he thought this. I realize that there is no archaeological evidence of a typical heiau in the area, but it is also important to note that Hawaiian sacred sites cannot always be detected by archaeological evidence. Many heiau in the old days were composed of a just a single unusual stone, or a particular tree, or were perhaps some other type of natural feature that would not align with a Western understanding of what a temple might look like. There is some evidence that heiau built for Pele specifically were not stone structures; so naturally no archaeological evidence would ever have been found alerting scientists to the existence of such a site.

**4.11.2 Concern Statement: Mitigation for Demolition of Historic Properties**

The Jaggar Museum is a significant historical building that should be documented.

Correspondence Id: 140 Comment Id: 904632

Comment Text: HHF is concerned with the proposed demolition of Jaggar Museum, which is a significant historic building. We understand that NPS has determined that the building is not safe for habitation and is structurally unsound. We request to discuss that analysis and proposed mitigation measures during the future Section 106 consultation.

**4.11.3 Concern Statement: Follow Secretary of the Interior Standards when Remodeling Buildings**

Follow Secretary of the Interior (SOI) standards when repurposing buildings.

**Representative Comment(s)**

Correspondence ID: 140 Comment ID: 904655

Comment Text: The existing education center in the NPS administrative area would be repurposed for NPS administrative use. HHF Comment No concerns, subject to detailed plans following SOI Standards

**4.11.4 Concern Statement: Impacts to Historic Properties in Concept 1**

Concepts 1 and 3 have the greatest impacts to historic properties due to large areas of development.

**Representative Comment(s)**

Correspondence Id: 140 Comment Id: 904636

Comment Text: Concepts 1 and 3 have the greatest level of impact on historic properties, and also appear to extend the visitor amenities with a large amount of paved areas through new parking, roadways and pavilions. HHF opposes this level of development, which appears to be more suited to a suburban office park than to a premier national park.

**4.11.5 Concern Statement: Support for Concept 2 to Avoid Impacts to Historic Properties**

Concept 2 avoids the most impacts to historic properties and avoiding impacts may be possible if designs comply with SOI Standards.

**Representative Comment(s)**

Correspondence Id: 140 Comment Id: 904635

Comment Text: Of the four alternative concepts for the Kīlauea Visitor Center Area, HHF is most supportive of Concept 2. • Concept 2 avoids most impacts to historic properties, including the 1877 Volcano House and its landscape, Volcano House, 'Ōhi'a Wing, the Kīlauea Administration and Employee Housing Historic District, and the Kīlauea Military Camp Historic District. While the details of treatments for each of the historic properties and sites are to be determined, avoiding effects will be possible under this concept if the designs comply with the Secretary of the Interior's Standards for the Treatment of Historic Properties (SOI Standards).

**4.11.6 Concern Statement: Concept 3 Crowds the Historic District**

Concept 3 crowds the historic district and is therefore not preferred.

**Representative Comment(s)**

Correspondence Id: 140 Comment Id: 904666

Comment Text: We find that this concept is the least desirable configuration within the existing Visitor Complex site north of the road. It crowds the visitor facilities to the far west end of the site, eliminates the park and picnic area next to the 1877 Volcano House (Art Gallery), and does not incorporate an education component. The parking is spread out and remote from the visitor facilities and the realigned Crater Rim Drive crowds the historic Administration District.

**4.11.7 Concern Statement: Artifacts at KMC Area**

Concept 3 and 4 impact historical artifacts.

**Representative Comment(s)**

Correspondence ID: 79 Comment ID: 904389

Comment Text: I think Concept 3 and 4 are not recommended because of possible historical artifact impacts in the KMC area

**4.12 Education and Interpretation****4.12.1 Concern Statement: Reuse Exhibits and Jaggar Museum as Part of Interpretation**

Include the remnants of the historic Jaggar Museum as part of an educational feature within the park.

**Representative Comment(s)**

Correspondence Id: 87 Comment Id: 904435

Comment Text: Given that significant investment would be needed to repair the Okamura Building, in addition to instability of the bluff in that location, it makes sense to demolish this building, as well as the historic Jaggar Museum building. In the "Aspects Common to All Draft Concepts," it states that "remnant elements from the buildings may be salvaged and incorporated into a viewing shelter located on site." Because Jaggar Museum is a historic building, I do hope that part of it survives and can serve as an educational feature incorporating signage.

#### **4.12.2 Concern Statement: Co-locate USGS-PIERC with the Natural Resources Division, put Education Center in Central Location**

Co-locate the Pacific Island Ecosystems Research Center (PIERC) organization with the Natural Resources Division to provide more opportunities for formal and informal collaboration.

##### **Representative Comment(s)**

Correspondence Id: 88 Comment Id: 904449

Comment Text: Next, it is unfortunate to think of the PIERC organization being moved of the 'research area' of the park. The co-location with the Natural Resources Division has provided great opportunities for formal and informal collaboration, sometimes as simple as seeing someone in the parking lot and asking a question that would not otherwise be asked. The need to get into a vehicle and drive to another location will eliminate chance encounters and really limit casual contacts as the effort required will be too much.

Correspondence Id: 88 Comment Id: 904452

Comment Text: 3. Education Center a. The Education Center should be part of the core area, not off in the housing area. b. Place the Education Center where the USGS Field station is shown in Concept 1. c. To accommodate more parking for KVC, it may be necessary to move the Education Center somewhat closer to Highway 11 with additional parking between it and KVC

#### **4.12.3 Concern Statement: Education Center – Concept 2 Preferred**

Concept 2 is preferred because the educational and visitor center are located within the same area.

##### **Representative Comment(s)**

Correspondence Id: 128 Comment Id: 904586

Comment Text: Concept 2 is the most appealing to me with the educational center located near the visitor center. Clear signage would be helpful.

#### **4.12.4 Concern Statement: Concept 4 and USGS Co-Location and Education**

Co-locating the USGS and NPS into one location provides valuable collaboration and information between scientists and NPS staff.

##### **Representative Comment(s)**

Correspondence Id: 145 Comment Id: 904733

Comment Text: Co-location with HVO/BRD Scientists are essential colleagues to the interpretive staff as are the Kupuna and Native Hawaiian Practitioners. Co-locating HVO/BRD and the NPS at the new field station encourages brown bags, briefings, and seminars for interpreters to learn about the ever-changing volcano, effects of climate change on the Parks Ecosystems and other new discoveries to share the pulse of science with the visitors.

#### **4.12.5 Concern Statement: Better Use of Education Center/Design**

Update the education center with an interpretive planning effort that prioritizes education into the design.



**Representative Comment(s)**

**Correspondence Id:** 146 **Comment Id:** 904748

**Comment Text:** If the point of the Education Center is to teach and to have school children experience the outdoors and the natural and cultural resources of HAVO, maintain the EC at its current site. Construct open hālau (pavilions) as learning spaces, construct appropriate restroom facilities, and utilize the current building as the piko (center) of the operation. Increase variety of native plantings, construct short connector trails, and encourage guided exploration and activities outside.

**4.13 Operation and Maintenance****4.13.1 Concern Statement: Costs of Staffing**

Evaluate how the concepts impact the park's cooperating association, Hawai'i Pacific Parks Association.

**Representative Comment(s)**

**Correspondence Id:** 145 **Comment Id:** 904721

**Comment Text:** Historically the park didn't have enough funding to staff both KVC and Jaggar. Fortunately Pacific Island Parks Association (PIPA) personnel ran Jaggar. One interior staffed facility seems preferable for park budgets with interpretation outside, as well as limits maintenance and utility costs. Has PIPA evaluated the different concepts? What roles and square footage do they need to meet the mission as set forth in their collaboration/partnership with the Park? How much interpretive space is left in each concept after they have their bookstore area? Or areas? What is the most cost effective model for PIPA to serve the visitor and provide resources as well as be financially solid?

**4.13.2 Concern Statement: Costs for Additional Kiosk**

There should be adequate funding to staff the proposed additional kiosk and this funding should be in place before it is built.

**Representative Comment(s)**

**Correspondence Id:** 3 **Comment Id:** 904164

Adequate funding for staffing extra kiosk needed before decision to build it.

**4.13.3 Concern Statement: Support for Concept 1 Costs**

Concept 1 and co-located infrastructure minimizes costs.

**Representative Comment(s)**

**Correspondence Id:** 53 **Comment Id:** 904341

Concept 1 Co-located infrastructure would also seem minimize initial construction cost and maintenance cost and facilitate repairs after future damaging eruption events.

**4.14 Natural Resources****4.14.1 Concern Statement: Preserve 'Ōhi'a Forests**

The priority of the project should be to impact the least amount of native forest and incorporate removed materials into the final design.

**Representative Comment(s)**

Correspondence Id: 69 Comment Id: 904331

Comment Text: I would recommend the least amount of destruction to the native environment for your projects. Maintaining the forest and cultural resources should be a number priority. If you must remove an 'Ōhi'a tree please dedicate that tree as a bench or something that is used and incorporated into the park.

**4.14.2 Concern Statement: High Impacts on Forest**

Concept 1 causes the greatest impacts on the last old growth 'ōhi'a stands on the island.

**Representative Comment(s)**

Correspondence Id: 43 Comment Id: 904271

Comment Text: Concept #1 is also the concept that has the greatest impact on undisturbed areas, as other concepts make use of places like the ballfield at KMC. Finally, concept #1 must consider the disproportionate impact it will have on ohia; although it is not a huge area of forest, that stand of ohia is much older, with trees that are well over a hundred years old, an increasingly rare occurrence for an easily observed stand of ohia on the big island. In fact one might realistically argue it is one of the most visible old growth ohia stands on the island.

**4.14.3 Concern Statement: Reduced Impacts on Forest**

Concept 2 strikes a balance between upgrading facilities, repurposing existing areas, and minimizing disturbance of natural areas.

**Representative Comment(s)**

Correspondence Id: 30 Comment Id: 904216

Comment Text: I support Concept 2 of the Disaster Recovery Concept Development for Hawai'i Volcanoes National Park. That concept accomplishes all central elements desired for the disaster recovery plan, with a minimum expansion to the footprint of disturbed and/or developed areas at the Kīlauea Summit. Concept 2 strikes the best balance of meeting the needs of park visitors, staff, and USGS, while doing an excellent job of preserving the character of the place and area (and minimizing how much 'ōhi'a forest gets bulldozed). It makes intelligent use of existing disturbed areas, re-purposing many (such as using old road corridor area for new entrance station staff parking). It also preserves the old ballfield at KMC, and makes important and necessary changes to the entrance station area.

**4.14.4 Concern Statement: Ball Field Already Disturbed**

Concept 4 incorporates the old baseball field within the design and reduces the amount of native forest removed.

**Representative Comment(s)**

Correspondence Id: 132 Comment Id: 904603

Of the various proposals, I favor most elements of concept 3. I am especially positive about the siting of the USGS field station in this concept. -The ballfield location is already disturbed and does not require the bulldozing of native forest that the other two proposed sites for the USGS field office would need.

Correspondence Id: 39 Comment Id: 904263

Comment Text: The use of the old baseball field at KMC in Concept 4 seems to have the least destruction of native forest of all the options. The least amount of forest destroyed in the construction

of new facilities should be of utmost importance in a national park. Also concerning is the spread of ROD during construction, so the less Ohio that is cut down the better.

#### **4.14.5 Concern Statement: Concerns about Nēnē for Concept 4**

Concept 4 . . . could cause nēnē habitat to be overrun with visitors.

##### **Representative Comment(s)**

Correspondence Id: 96 Comment Id: 90447

Comment Text: Concept #4 is the worst plan, in my opinion, as people will probably stop at other sites en route to the visitor center before being adequately oriented to the Park. It sounds like the Education Center is intended to fulfill that role - but I think people will hear "Visitor Center" and head there first before stopping at an "Education Center". It also seems like it would have an impact on KMC, which currently has the feeling of being a charming and unique historic location within the Park (and a great place to get a chance to see Nene), due to being a bit remote from the main visitor facilities. I think tons of people would spread over the KMC grounds, turning them into a scene, and making the area Nene unfriendly.

#### **4.15 Pedestrian Safety and Access General**

##### **4.15.1 Concern Statement: Safety on the Bluff**

Clarify how a new building design can be safer than the Jaggar Museum when the area is currently being undermined by cracks and active faults.

##### **Representative Comment(s)**

Correspondence Id: 86 Comment Id: 904430

Comment Text: In Superintendent's memo dated 5/12/20 (HAVO I.A.2), paragraph 3: ". . . The Jaggar/HVO complex is surrounded by cracks and active faults, and the area continues to subside on the crater side due to the caldera collapse, undermining slope stability and the building foundation." If area is not safe for the buildings, how/why is it going to be safe for visitors and staff even after "repair"?

##### **4.15.2 Concern Statement: Pedestrian Safety Concept 1**

Concept 1 keeps the visitor center and VAC along the same side of the road with clear entrance and exits for parking, which will keep pedestrians safer.

##### **Representative Comment(s)**

Correspondence Id: 74 Comment Id: 904364

Comment Text: There will be a lot of foot traffic using the pedestrian loop, but there's still a chance that folks will just walk along the roadways to get to the picnic area or the Volcano Art Gallery. It think it's safer to keep the VC and VAC on the same side of Crater Rim Drive.

Correspondence Id: 12 Comment Id: 904170

Comment Text: I prefer Concept 1 because: there is an entrance and exit to visitor center parking so that pedestrians are safer.

Correspondence Id: 100 Comment Id: 904485

Comment Text: I think that the separation of PIERC and USGS from KVC facilities will minimize traffic problems, and could also reduce pedestrian and driver safety hazards for visitors.

#### 4.15.3 Concern Statement: Signs

Signs should clearly mark pedestrian walkways to improve safety for vehicles and pedestrians.

##### Representative Comment(s)

Correspondence Id: 2    Comment Id: 904147

Comment Text: Pedestrian pathways and congregating areas should be clearly designated and made friendly to use. This would help to lesson people wandering around traffic on roads and parking.

Correspondence ID: 126              Comment ID: 904585

Comment Text: Increase public directional signage especially for the Volcano House and the Volcano Art Center. This should be along the main road at the turnouts to each. Sing some parking at the west end of the complex (which includes bus parking) for the Volcano Art Center/V House to improve visibility of and access to the concessions at the west end.

#### 4.15.4 Concern Statement: Pedestrian Safety Concept 4

Concept 4 provides a safer design for pedestrians.

##### Representative Comment(s)

Correspondence Id: 3    Comment Id: 904152

Comment Text: I like Concept 4 best because: o Visitor stops are spread out and not congested near the current KVC. This is the safest version for pedestrians of all the concepts.

#### 4.16 Park Entrance General

##### 4.16.1 Concern Statement: Alternative Entrance Suggestions

Create one entrance along the Mauna Loa Road and remove the front entrance to alleviate congestion within the park.

##### Representative Comment(s)

Correspondence Id: 145    Comment Id: 904718

Comment Text: The new roundabout, as well as the employee pass through lane near the current park entrance is an attempt to address congestion at the front gate. It does not appear to alleviate congestion. The loss of forest is excessive. It appears very congested and wasn't this included in the CRD EA and discarded? My suggestion is to make one park entrance at the Mauna Loa Road. Close the current entrance, reshape the landscape geomorphology, fill in the cut (if there was a cut?) and reforest that area. Perhaps a roundabout on Highway 11 and a reduction in speed limit could be considered with some widening by Hawaii Dept. of Transportation. Or could there be turning lanes? This new entrance gate would be significantly away from the highway turn-off to provide space for cars not to be backed up to Highway 11. Suggest this new entrance gate be evaluated in the disaster recovery plan. As the park learned in the past, HAVO is very fortunate to have only one gate, as two gates can be very expensive to operate and may reduce the Park fee revenue needed. Will transportation study findings influence the disaster recovery concepts? How were the lava tube/ KVC shuttles evaluated in context of the climate crisis and current disaster recovery projects? It's not clear if this transportation effort is still part of the 2016 GMP implementation or if it now interfaces with this plan.

#### **4.16.2 Concern Statement: Need a Secondary Entrance/Exit**

Add a second entrance/exit to the park to alleviate congestion in emergencies.

##### **Representative Comment(s)**

Correspondence Id: 146 Comment Id: 90474

Comment Text: A secondary park entrance/exit at the connector between Maunaloa Road and Crater Rim Drive should be established. Having a single entrance and exit is problematic during emergencies.

Correspondence ID: 14 Comment ID: 904180

Comment Text: Concept #4 would only work if you open another entrance from Highway 11 near to KMC.

#### **4.16.3 Concern Statement: Concept 3 Kiosk Placement**

Move the kiosk away from the highway to reduce traffic.

##### **Representative Comment(s)**

Correspondence ID: 74 Comment ID: 904366

Comment Text: Concept 3 •By moving the kiosk further from the highway, traffic will be less likely to be backed up all the way to the highway.

#### **4.16.4 Concern Statement: Concept 4 Entrance Concerns**

The concepts do not appear to address congestion or areas for busses to turn around, visitors to wait for being picked up by busses. Suggestions for changes to the entrance such as turning lanes or other changes to Highway 11.

##### **Representative Comment(s)**

Correspondence ID: 70 Comment ID: 904352

Comment Text: In Concept 4, it appears that there is only one access entrance and it is shared by buses and smaller vehicles. The light blue lines on the west access lane near the staff office building are labeled for use by staff only. How are the buses going to turn around and exit? Where is the large covered passenger waiting area that surely will be necessary if 24 busses (and those waiting to pick up or drop off their passengers) converge on the park? Perhaps it would be prudent to have a closer look at the logistics of a parking lot entry/exit exclusively for busses

### **4.17 Parking**

#### **4.17.1 Concern Statement: Reduce Parking to Control Visitors**

Limit the number of visitors by limiting the amount of parking onsite.

##### **Representative Comment(s)**

Correspondence Id: 69 Comment Id: 904332

Comment Text: I would like to see a limit to the number of visitors allowed in the park daily. The lack of parking should dictate how many visitors can be accommodated. This would not apply to Hawaii residents.

#### **4.17.2 Concern Statement: Concept 1 More Parking**

Concept 1 increases parking onsite.

##### **Representative Comment(s)**

Correspondence ID: 79 Comment ID: 904383

Comment Text: I support concept 1 for the following reasons: - It gives additional visitor and NPS parking. Sometimes the visitor center can be very busy when all of the buses come in and the day tourists drive in.

#### **4.17.3 Concern Statement: Bus Parking Locations**

Bus parking should be placed to reduce congestion.

##### **Representative Comment(s)**

Correspondence ID: 153 Comment ID: 905333

Comment Text: I like Concept two for these reasons: 2. I love that bus parking is in the middle and not so intrusive. Having said that, I don't like the bus parking in front of the picnic area. Buses are so large and intrusive and takes away from the beauty of the area. I like it behind of like shown here, in between the buildings

Correspondence ID: 119 Comment ID: 904556

Comment Text: Concept Three: KVC • The bus parking seems to be in an odd location that will create a lot of congestion and seems better placed on the outside of any new parking not right at the center of the turn off to CRM.

#### **4.17.4 Concern Statement: General Support or Opposition to More Parking**

Assess the need for additional parking onsite.

##### **Representative Comment(s):**

Correspondence Id: 48 Comment Id: 904295

Comment Text: For U'ekahuna area- • likes proposed add'l parking lot

Correspondence Id: 144 Comment Id: 904710

Comment Text: I think it is wise to wait and see if the additional parking area across the road is really needed. Since you can have the additional parking of the former HVO employees; that already increased the number of spaces.

Correspondence Id: 46 Comment Id: 904284

Comment Text: Don't pave an extra parking lot near Jaggar

#### **4.18 Traffic Improvement**

##### **4.18.1 Concern Statement: Roundabout**

Use new traffic designs that will increase traffic flow in and out of the park.

**Representative Comment(s)**

Correspondence Id: 3 Comment Id: 904153

Comment Text: I like Concept 2 next best: o But ONLY if the roundabout is omitted. (I am not in favor of the roundabout. It will cause more congestion, and the turning radius is not large enough to accommodate large vehicles in case they need to turn around. It is WAY too small. People are not used to roundabouts here on the island, and accident potential is HIGH. A second option to a roundabout would be an added inbound lane that goes as far as the south side visitor center parking area and then merges back in to Crater Rim Drive.)

Correspondence Id: 74 Comment Id: 904361

Comment Text: International visitors will know how to navigate a roundabout, but many locals and mainlanders are not familiar and will not know how to yield or signal properly. I have lived in Hawaii for most of my adult life and can attest to the difficulties of properly navigating a roundabout, having lived in the UK for two years. I'm assuming it will be a mini-roundabout (only 1 lane) which means people may try to drive over the center hump or they won't know how to signal which exit they will be taking. In either case, it may turn into a cluster of confusion, where everyone just takes turns passing through the roundabout...which defeats the whole purpose of a roundabout!

Correspondence Id: 81 Comment Id: 904400

Comment Text: A traffic circle should be considered for any concept chosen. It will eliminate the hazardous U-turns that currently occur.

**4.19 Traffic Increases****4.19.1 Concern Statement: Congestion**

Update the layout of the visitor center and parking lot to alleviate traffic congestion.

**Representative Comment(s):**

Correspondence ID: 74 Comment ID: 904363

Comment Text: Building the new Visitor Center and new parking lot so close the highway is a poor choice for several reasons: the positions of the VC Entrance and Exit will increase traffic in the roundabout because it forces folks who are leaving the VC but want to head towards Thurston to have to go through the roundabout and past the entrance to the VC again. You also increase the risk of people trying to exit using the entrance, since that's the shortest path to get to Thurston.

**4.19.2 Concern Statement: Concept 4 Increases the Traffic**

There would be an increase in visitors driving through the park.

**Representative Comment(s):**

Correspondence ID: 70 Comment ID: 904616

Comment Text: Placing the Visitor Center immediately adjacent to KMC will destroy much of that serenity with increased traffic and noise.

**Representative Comment(s):**

Correspondence ID: 120 Comment ID: 904568

Comment Text: Concept 4 negative - Too much visitor driving thru park

## 4.20 USGS Building Location

### 4.20.1 Concern Statement: USGS Should Be Close to the Crater

The USGS office should be closer to the crater to allow ingress and egress away from crowded tourist areas for work and emergencies.

#### Representative Comment(s)

Correspondence Id: 83 Comment Id: 904410

Comment Text: The HVO mission will be best achieved at the KMC ballfield, separated from the vicinity of KVC or the VEOC due to the following: 1. Power and internet (critical needs) are more reliable on the west side of the caldera, fed by lines from Kau, and avoiding the heavily treed corridor to Hilo that suffers outages frequently due to storms. 2. Distance from the nexus of visitor services means HVO and PIERC staff will not have to fight traffic and people to get to field areas including the important drive down into the caldera where much of our drive to gas monitoring, geology studies, and instrumentation maintenance occurs. Given intermittent crowds at KVC and the entrance traffic and pedestrians pose a problem and safety risk for HVO staff rushing to a new eruptive outbreak and then upstream back to the office. This could be disastrous for rapid response in support of managing visitor safety. The same is true for NPS staff. 3. The viewshed from locations near the current KVC and the EOC by a one or even two level field station would not be as open as that from KMC, hampering potential radio links to instrumentation in the future. 4. Environmental conditions of the forest on the east side mean more moisture and mold issues for design and maintenance and storage of equipment and records. 5. The KMC site offers multiple ingress/egress options should a large earthquake or other situation make the main exit impossible or too difficult (e.g. traffic jam) to use. This is a safety issue in the event of road failure or rapidly evolving eruption conditions.

### 4.20.2 Concern Statement: USGS Should Be Separated from Visitor Center

Separate the USGS office from visitor facilities to avoid congested tourist areas.

#### Representative Comment(s)

Correspondence Id: 54 Comment Id: 904310

Comment Text: That brings me to 2 which seems to be a good compromise as it keeps the USGS office away from the visitors area, which should make it easier for those USGS employees to get to the office and not have visitors roaming the grounds looking for information etc.

### 4.20.3 Concern Statement: USGS Should Be Close to the Visitor Center for Increased Education

Place the USGS office next to the visitor center for increased educational opportunities for the public.

#### Representative Comment(s)

Correspondence Id: 124 Comment Id: 904579

Comment Text: I think Concept 4 is also worthy of consideration since it places the USGS at the KMC ball field site also. I would rank it slightly less ideal since a visitor center would be next door, potentially causing extra traffic and distraction. However, on the other hand, it could also be an opportunity to mimic the arrangement HVO and the Jaggar Museum had at the bluff, with interpretive activities synergizing with limited tours of HVO for student groups, for example.



## 4.21 Visitor Experience

### 4.21.1 Concern Statement: Design of Interior

Update the design of visitor centers to increase the flow of foot traffic and facilitate visitor and staff interactions.

#### **Representative Comment(s)**

Correspondence Id: 53 Comment Id: 904345

Comment Text: We also hope that the design of the visitor spaces (both interior and covered exterior shelters) will be designed to facilitate visitor foot traffic flow. The layout of the existing KVC and Jagger Museum have too many "dead end" spaces and bottlenecks. PLEASE design any future information desk areas to facilitate staff interactions with visitors without causing severe congestion that impedes flow through the visitor center.

### 4.21.2 Concern Statement: Visitor Experience Should be First Priority

Prioritize visitor experience in the design and layout of the new infrastructure.

#### **Representative Comment(s)**

Correspondence Id: 145 Comment Id: 904714

Comment Text: Visitor experience detail and/or structure function is also missing from the concepts. It's challenging to comment if you don't know the desired visitor experience, as it results in "force-fitting" interpretation into the buildings and infrastructure. This can stifle creativity for interpretive exhibits and design and is never ideal. Interpretive planning is integral as a driver in determining the best location of facilities. This type of planning helps ensure natural resource protection, protection of the sacredness of site and protection of other visitor experiences that are foundational to the planning process. How will interpretive and environmental education planning be integrated into the disaster recovery planning effort? The visitor centers are more than just a building. The location, ease of access, messaging, type of exhibits etc. all determine the visitor experience and if the sacredness and protection of the resources is more likely.

Correspondence Id: 119 Comment Id: 904561

Comment Text: For decades the park has offered outstanding visitor experiences to access volcanic features and eruptive activity with very few safety issues. It is critical that the park should continue to provide outstanding visitor experiences for viewing the eruptions and the visitor experience should shine in any implemented concept. I would hope that any matrix for concept priority would include visitor experience as a factor for team selection of preferred concept elements.

### 4.21.3 Concern Statement: Keep Visitor Services in One Area

Keep the visitor services in one area to create a better visitor experience.

#### **Representative Comment(s):**

Correspondence Id: 88 Comment Id: 904455

Comment Text: It is important to keep the Kilauea Visitor Center near the Volcano Art Center and Volcano House so that all these facilities are convenient to walk between. Visitors patronizing these concessions is important for the success of these businesses and the overall visitor experience.

Correspondence Id: 2 Comment Id: 904150

Comment Text: I think keeping all of the visitor service in one area is a better plan (concept 3). It makes it easier for The visitor to experience all of the facility without missing anything. They won't have to regroup and drive, or find, or perhaps miss an area because it's all there. The visitor center, theater, gift shop and arts centre and hula platform are all together, without negotiating cars and busses. This obviously has less of an impact on the park and keeps people there longer.

Correspondence Id: 108 Comment Id: 904510

Comment Text: Presentations of the four concepts appears to ignore impacts on existing infrastructure, particularly the Volcano House Hotel, the Volcano Art Center Gallery, nearby staff offices dispersed in the former residential area, and the nearby facilities maintenance storage yard and rain catchment area. Although it is desirable to relocate visitor services, USGS, and park administrative services to a site adjacent to the Kilauea Military Camp, it seems important to consider the impact this will have on both KMC as well as on the dispersal of visitor and staff movement into new territory. One consideration might be to relocate the park entrance to a nearer access to Highway #11, such as where there is a gated drive that leads directly to the west end of the KMC complex.

#### **4.21.4 Concern Statement: Need Covered Areas for Weather**

Include covered walkways for inclement weather.

##### **Representative Comment(s):**

Correspondence Id: 142 Comment Id: 904679

Comment Text: The integrity of the historic structure will not be restored by removal of the covered lanai and walkway. The entire front of the building (windows and doors) was completely remodeled in the renovations of 2002-2003. The covered lanai and walkways were added to the building perhaps 40 years ago in response to visitor needs - visitors that the building was built to serve in the first place. According to Weather Atlas, Volcano gets an average of 288 rainfall days a year, and 107.8 inches of precipitation yearly. Visitors moving from the parking areas to the building, restrooms, and exhibits need a covered lanai walkway. If a concept is chosen that coverts the KVC into an Education Center, the school children will line-up and wait at the front door before entering and they need a covered lanai and walkway. Removal of the covered lanai and walkways will not restore the historic integrity of the building and by doing so would be a complete denial of visitor needs and expectations to fulfill a partial fantasy of a completely remodeled structure.

#### **4.21.5 Concern Statement: Prefer Concept 1 for Visitor Experience**

Concept 1 creates a better visitor experience and integrates Hawaiian life into the design.

##### **Representative Comment(s)**

Correspondence Id: 70 Comment Id: 904334

Comment Text: Concept 1 masses the HAVO experience close to the entry and offers a more integrated presentation to visitors. The Concept 1 visitor center and irregularly shaped lanai appear to present an architectural and design footprint closer to Hawaiian life with a large integrated lanai, than the three other Concepts.

#### **4.21.6 Concern Statement: Concept 1 Adversely Impacts the Visitor Experience**

Concept 1 provides a confusing visitor experience and takes away the physical beauty of the entrance.

##### **Representative Comment(s)**

Correspondence Id: 103 Comment Id: 904495

Comment Text: One of the beautiful things about driving into the park is being welcomed by native forest, apapane flying about, and a feeling of openness and being enveloped by a native forest, which is a very pleasant first impression of the park. I am concerned that if all the facilities were to occupy both sides of the entrance road as proposed in Concept #1, that feeling of peace and calm will be compromised and visitor impressions might be affected as well.

Correspondence Id: 135 Comment Id: 904617

Comment Text: Concept 1 is overly complex and will definitely lead to confusion and lost visitors. It also concentrates too many functions in one relatively small area. The congestion in that area will likely be terrible from mid-morning to the mid or late afternoon. Signage will not overcome Concept 1's complexity. I can imagine 40-50% of visitors taking the first right out of the roundabout, finding themselves at the Visitor Center exit, continuing on in confusion, and turning around in the worst/most dangerous places down the road. What a mess Concept 1 is!

#### **4.21.7 Concern Statement: Avoid Visitor Impacts to KMC Authorized Patrons**

Keeping visitor facilities close to the park entrance will allow a peaceful and better experience for authorized patrons of KMC.

##### **Representative Comment(s):**

Correspondence Id: 135 Comment Id: 904616

Comment Text: 1. KMC serves those who now defend our nation and military retirees as a peaceful and beautiful location for rest and recuperation. Many of those staying at KMC have endured multiple deployments and combat. Placing the Visitor Center immediately adjacent to KMC will destroy much of that serenity with increased traffic and noise. 2. We have visited KMC multiple times since Crater Rim Drive was closed in 2018. Each time, despite the many signs, an almost constant stream of tourist vehicles drives through KMC attempting to see if they can get farther down the road. With the Visitor Center right next door, I would venture that 10-25% of the visitors intending to go to the Visitor Center will drive into and out of KMC, increasing the noise and traffic hazards for those staying there. Again, no amount of signage will prevent this. 3. We therefore also support Concept 2 or 3's location of the Visitor Center on the right side of the road as you enter the park. The simplicity of this location is ideal. Rangers would be able to direct visitors to the center with a simple, "straight ahead and it's your first right" direction as they do now.

#### **4.21.8 Concern Statement: Concept 2 Reduces Confusion over Concept 1, Provides Visitor Familiarity**

Concept 2 has the visitor center near the entrance, which will draw visitors due to the simple and familiar layout.

##### **Representative Comment(s):**

Correspondence Id: 34 Comment Id: 904240

Comment Text: Concept 2 makes the most sense to me. It would leave the new consolidated visitor center as the first building that people see after entering the park and would have the USGS field station

nearby but separate to avoid confusion. Having the new visitor center immediately on the right after entering would make it more easily accessible. It makes access to the loop trail, Volcano House, and other nearby points of interest easy. It looks like it makes good use of existing parking and would also involve little new impact to native vegetation.

#### **4.21.9 Concern Statement: Concept 4 Spreads Visitors Out More**

Spreading buildings to different areas of the park will spread out visitors and encourage them to explore more.

##### **Representative Comment(s):**

Correspondence Id: 64    Comment Id: 904319

Comment Text: I favor Concept 4, because it leaves the existing structures more or less as is and promotes a new Visitor Center in an area that is underutilized (the Ballfield near KMC). I believe that focusing new structures in the Ballfield will help to buffer the increased traffic near the Park entrance after expansion. By extending the facilities further down Crater Rim Dr. visitors will be encouraged to spread out more into the Park. This may also encourage more foot traffic between the Park entrance, the Sulfur Banks, the Steam Vents, the new Visitor Center, and the new open air viewing shelter (currently Jaggar Museum).

#### **4.22 Visual Impacts**

##### **4.22.1 Concern Statement: Concentration of Buildings Distracts from Visual**

Identify the visual impacts for each concept.

##### **Representative Comment(s)**

Correspondence ID: 118    Comment ID: 904544

Comment Text: so many buildings so close might detract from the natural beauty of the area

Correspondence ID: 145    Comment ID: 904734

Comment Text: There might be less tree removal and forest fragmentation down at the old CC camp (**concept 4**). The diminutive forest at the ball field makes buildings more difficult to construct to be subservient to the landscape. How will the infrastructural changes proposed by the disaster relief concepts impact the visual landscape? Where can each alternative infrastructure be seen from in the Park? This would be important to include in the future.

**Appendix A**  
**Correspondence Index of Organizations**

THIS PAGE INTENTIONALLY LEFT BLANK.

**Correspondence Index of Organizations**

Org. Type	Organization Name	Correspondence ID	Code	Description
O	Big Island Invasive Species Committee	71	MT100	Operation and Maintenance
			NR100	Natural Resource Concerns
	Historic Hawai'i Foundation	140	AL102	Alternative Suggestions Concept 2
			AL200	Alternative Uses for Buildings
			CE100	Civic Engagement
			CO102	Project Cost Concerns Concept 2
			CO104	Project Cost Concerns Concept 4
			CR100	Cultural Resource Concerns
			CR101	Cultural Resource Concerns Concept 1
			CR102	Cultural Resource Concerns Concept 2
			CR103	Cultural Resource Concerns Concept 3
			CR104	Cultural Resource Concerns Concept 4
			GNS100	General Project Support
			PD101	Pedestrian Safety and Access Concept 1
			US100	USGS Building
			VE104	Visitor Experience Concept 4
P	Coalition To Protect America's National Parks	76	TR200	Traffic Increases
			VE104	Visitor Experience Concept 4
C	Planning Department, County of Hawaii	154	CE100	Civic Engagement
F	Kilauea Military Camp (KMC)	50	GNS100	General Project Support
L	Edith Kanakaole Foundation	148	CC100	Cultural Concerns (Hawaii Specific, Archeological Will Go Under Sensitive Resources)
			PK100	Parking Reduced
			GNS100	General Project Support
	The Nature Conservancy of Hawai'i	25	GNS100	General Project Support
	Community Environmental Education	120	AL100	Alternative Suggestions
			NR103	Natural Resource Concerns Concept 3
			TR204	Traffic Increases Concept 4
	EpicLava llc.	122	US100	USGS Building
			AL100	Alternative Suggestions
			GNS100	General Project Support
	Hale 'Olu Bed & Breakfast	102	US100	USGS Building
			VE102	Visitor Experience Concept 2
			AL100	Alternative Suggestions
	Kuamoo Foundation	62	AL200	Alternative Uses for Buildings
			ALT300	Alternative Trails Suggestions
			CC100	Cultural Concerns (Hawaii Specific, Archeological Will Go Under Sensitive Resources)
	Kupuna	158	GNS100	General Project Support

Org. Type	Organization Name	Correspondence ID	Code	Description
	Mauka Makai Adventures	97	NR104	Natural Resource Concerns Concept 4
			VE104	Visitor Experience Concept 4
	Office of Hawaiian Affairs	69	CE100	Civic Engagement
			CR100	Cultural Resource Concerns
			ED101	Education and Interpretation Concept 1
			NR100	Natural Resource Concerns
			PK100	Parking Reduced
			US100	USGS Building
			VE102	Visitor Experience Concept 2
	Volcano Art Center	80	US100	USGS Building
			VE103	Visitor Experience Concept 3
	Volcano Out & About	118	GN300	Prefer Concept 3 General Comment
			GNS100	General Project Support
			TR100	Traffic Improvements
			US100	USGS Building
			VE104	Visitor Experience Concept 4
			VI101	Visual Impacts Concept 1



## **Appendix B**

### **Correspondence Index by Code**

THIS PAGE INTENTIONALLY LEFT BLANK.

<b>Code</b>	<b>Description</b>	<b>Organization</b>	<b>ID</b>
<b>AL100</b>	Alternative Suggestions	Community Environmental Education	120
<b>AL100</b>	Alternative Suggestions	EpicLava llc.	122
<b>AL100</b>	Alternative Suggestions	Hale 'Ohu Bed & Breakfast	102
<b>AL100</b>	Alternative Suggestions		73
<b>AL100</b>	Alternative Suggestions		63
<b>AL100</b>	Alternative Suggestions		108
<b>AL100</b>	Alternative Suggestions		117
<b>AL100</b>	Alternative Suggestions		53
<b>AL100</b>	Alternative Suggestions		3
<b>AL100</b>	Alternative Suggestions		12
<b>AL100</b>	Alternative Suggestions		16
<b>AL100</b>	Alternative Suggestions		18
<b>AL100</b>	Alternative Suggestions		19
<b>AL100</b>	Alternative Suggestions		20
<b>AL100</b>	Alternative Suggestions		31
<b>AL100</b>	Alternative Suggestions		33
<b>AL100</b>	Alternative Suggestions		34
<b>AL100</b>	Alternative Suggestions		35
<b>AL100</b>	Alternative Suggestions		37
<b>AL100</b>	Alternative Suggestions		38
<b>AL100</b>	Alternative Suggestions		46
<b>AL100</b>	Alternative Suggestions		47
<b>AL100</b>	Alternative Suggestions		48
<b>AL100</b>	Alternative Suggestions		52
<b>AL100</b>	Alternative Suggestions		60
<b>AL100</b>	Alternative Suggestions		61
<b>AL100</b>	Alternative Suggestions		67
<b>AL100</b>	Alternative Suggestions		68
<b>AL100</b>	Alternative Suggestions		70
<b>AL100</b>	Alternative Suggestions		81
<b>AL100</b>	Alternative Suggestions		83
<b>AL100</b>	Alternative Suggestions		85
<b>AL100</b>	Alternative Suggestions		87
<b>AL100</b>	Alternative Suggestions		88
<b>AL100</b>	Alternative Suggestions		91
<b>AL100</b>	Alternative Suggestions		100
<b>AL100</b>	Alternative Suggestions		103
<b>AL100</b>	Alternative Suggestions		107
<b>AL100</b>	Alternative Suggestions		109
<b>AL100</b>	Alternative Suggestions		113
<b>AL100</b>	Alternative Suggestions		119

Code	Description	Organization	ID
AL100	Alternative Suggestions		131
AL100	Alternative Suggestions		132
AL100	Alternative Suggestions		142
AL100	Alternative Suggestions		144
AL100	Alternative Suggestions		145
AL100	Alternative Suggestions		146
AL100	Alternative Suggestions		147
AL100	Alternative Suggestions		150
AL100	Alternative Suggestions		151
AL100	Alternative Suggestions		157
AL101	Alternative Suggestions Concept 1		91
AL102	Alternative Suggestions Concept 2		126
AL102	Alternative Suggestions Concept 2	Historic Hawai'i Foundation	140
AL102	Alternative Suggestions Concept 2		3
AL102	Alternative Suggestions Concept 2		142
AL103	Alternative Suggestions Concept 3		1
AL103	Alternative Suggestions Concept 3		2
AL103	Alternative Suggestions Concept 3		3
AL103	Alternative Suggestions Concept 3		85
AL103	Alternative Suggestions Concept 3		91
AL104	Alternative Suggestions Concept 4		159
AL104	Alternative Suggestions Concept 4		18
AL104	Alternative Suggestions Concept 4		36
AL104	Alternative Suggestions Concept 4		87
AL104	Alternative Suggestions Concept 4		142
AL104	Alternative Suggestions Concept 4		145
AL200	Alternative Uses for Buildings	Hale 'Oahu Bed & Breakfast	102
AL200	Alternative Uses for Buildings	Historic Hawai'i Foundation	140
AL200	Alternative Uses for Buildings		98
AL200	Alternative Uses for Buildings		23
AL200	Alternative Uses for Buildings		53
AL200	Alternative Uses for Buildings		93
AL200	Alternative Uses for Buildings		46
AL200	Alternative Uses for Buildings		48
AL200	Alternative Uses for Buildings		58
AL200	Alternative Uses for Buildings		70
AL200	Alternative Uses for Buildings		77
AL200	Alternative Uses for Buildings		83
AL200	Alternative Uses for Buildings		87
AL200	Alternative Uses for Buildings		91
AL200	Alternative Uses for Buildings		105
AL200	Alternative Uses for Buildings		106

<b>Code</b>	<b>Description</b>	<b>Organization</b>	<b>ID</b>
<b>AL200</b>	Alternative Uses for Buildings		109
<b>AL200</b>	Alternative Uses for Buildings		124
<b>AL200</b>	Alternative Uses for Buildings		138
<b>AL200</b>	Alternative Uses for Buildings		142
<b>AL200</b>	Alternative Uses for Buildings		145
<b>AL203</b>	Alternative Building Use Suggestions Concept 3		85
<b>ALT300</b>	Alternative Trails Suggestions	Hale 'Ohu Bed & Breakfast	102
<b>ALT300</b>	Alternative Trails Suggestions		16
<b>ALT300</b>	Alternative Trails Suggestions		36
<b>ALT300</b>	Alternative Trails Suggestions		81
<b>ALT301</b>	Alternative Trails Suggestions Concept 1		134
<b>ALT304</b>	Alternative Trails Suggestions Concept 4		108
<b>ALT304</b>	Alternative Trails Suggestions Concept 4		119
<b>ALT304</b>	Alternative Trails Suggestions Concept 4		142
<b>ALT304</b>	Alternative Trails Suggestions Concept 4		145
<b>CC100</b>	Ethnographic Concerns	Edith Kanakaole Foundation	148
<b>CC100</b>	Ethnographic Concerns	Kuamoo Foundation	62
<b>CC100</b>	Ethnographic Concerns		159
<b>CC100</b>	Ethnographic Concerns		46
<b>CC100</b>	Ethnographic Concerns		77
<b>CC100</b>	Ethnographic Concerns		84
<b>CC100</b>	Ethnographic Concerns		85
<b>CC100</b>	Ethnographic Concerns		111
<b>CC100</b>	Ethnographic Concerns		113
<b>CC100</b>	Ethnographic Concerns		116
<b>CC100</b>	Ethnographic Concerns		145
<b>CC100</b>	Ethnographic Concerns		146
<b>CC100</b>	Ethnographic Concerns		150
<b>CC103</b>	Ethnographic Concerns Concept 3		75
<b>CE100</b>	Civic Engagement	Historic Hawai'i Foundation	140
<b>CE100</b>	Civic Engagement	Office of Hawaiian Affairs	69
<b>CE100</b>	Civic Engagement	Planning Department, County of Hawaii	154
<b>CE100</b>	Civic Engagement		108
<b>CE100</b>	Civic Engagement		53
<b>CE100</b>	Civic Engagement		11
<b>CE100</b>	Civic Engagement		32
<b>CE100</b>	Civic Engagement		85
<b>CE100</b>	Civic Engagement		115
<b>CE100</b>	Civic Engagement		139
<b>CE100</b>	Civic Engagement		145

Code	Description	Organization	ID
CE100	Civic Engagement		147
CO100	Project Cost Concerns		53
CO100	Project Cost Concerns		134
CO101	Project Cost Concerns Concept 1		53
CO102	Project Cost Concerns Concept 2	Historic Hawai'i Foundation	140
CO102	Project Cost Concerns Concept 2		121
CO103	Project Cost Concerns Concept 3		100
CO103	Project Cost Concerns Concept 3		144
CO103	Project Cost Concerns Concept 3		155
CO104	Project Cost Concerns Concept 4	Historic Hawai'i Foundation	140
CO104	Project Cost Concerns Concept 4		121
CR100	Cultural Resource Concerns	Historic Hawai'i Foundation	140
CR100	Cultural Resource Concerns	Office of Hawaiian Affairs	69
CR100	Cultural Resource Concerns		70
CR100	Cultural Resource Concerns		109
CR100	Cultural Resource Concerns		113
CR100	Cultural Resource Concerns		145
CR101	Cultural Resource Concerns Concept 1	Historic Hawai'i Foundation	140
CR102	Cultural Resource Concerns Concept 2	Historic Hawai'i Foundation	140
CR103	Cultural Resource Concerns Concept 3		45
CR103	Cultural Resource Concerns Concept 3	Historic Hawai'i Foundation	140
CR103	Cultural Resource Concerns Concept 3		79
CR104	Cultural Resource Concerns Concept 4	Historic Hawai'i Foundation	140
CR104	Cultural Resource Concerns Concept 4		79
ED100	Education and Interpretation		159
ED100	Education and Interpretation		53
ED100	Education and Interpretation		35
ED100	Education and Interpretation		68
ED100	Education and Interpretation		81
ED100	Education and Interpretation		87
ED100	Education and Interpretation		88
ED100	Education and Interpretation		113
ED100	Education and Interpretation		119
ED100	Education and Interpretation		134
ED100	Education and Interpretation		145
ED100	Education and Interpretation		146
ED101	Education and Interpretation Concept 1	Office of Hawaiian Affairs	69
ED102	Education and Interpretation Concept 2		3
ED102	Education and Interpretation Concept 2		65
ED102	Education and Interpretation Concept 2		81
ED102	Education and Interpretation Concept 2		128
ED102	Education and Interpretation Concept 2		142

Code	Description	Organization	ID
ED102	Education and Interpretation Concept 2		153
ED103	Education and Interpretation Concept 3		142
ED104	Education and Interpretation Concept 4		83
ED104	Education and Interpretation Concept 4		119
ED104	Education and Interpretation Concept 4		124
ED104	Education and Interpretation Concept 4		142
ED104	Education and Interpretation Concept 4		145
GN100	Prefer Concept 1 General Comment		90
GN100	Prefer Concept 1 General Comment		42
GN100	Prefer Concept 1 General Comment		55
GN100	Prefer Concept 1 General Comment		56
GN100	Prefer Concept 1 General Comment		68
GN100	Prefer Concept 1 General Comment		89
GN100	Prefer Concept 1 General Comment		104
GN100	Prefer Concept 1 General Comment		155
GN200	Prefer Concept 2 General Comment		24
GN200	Prefer Concept 2 General Comment		48
GN200	Prefer Concept 2 General Comment		82
GN200	Prefer Concept 2 General Comment		89
GN200	Prefer Concept 2 General Comment		107
GN200	Prefer Concept 2 General Comment		123
GN200	Prefer Concept 2 General Comment		131
GN200	Prefer Concept 2 General Comment		137
GN200	Prefer Concept 2 General Comment		142
GN200	Prefer Concept 2 General Comment		143
GN200	Prefer Concept 2 General Comment		155
GN300	Prefer Concept 3 General Comment	Volcano Out & About	118
GN300	Prefer Concept 3 General Comment		2
GN300	Prefer Concept 3 General Comment		66
GN300	Prefer Concept 3 General Comment		67
GN300	Prefer Concept 3 General Comment		81
GN300	Prefer Concept 3 General Comment		82
GN300	Prefer Concept 3 General Comment		85
GN300	Prefer Concept 3 General Comment		89
GN300	Prefer Concept 3 General Comment		106
GN300	Prefer Concept 3 General Comment		123
GN300	Prefer Concept 3 General Comment		131
GN300	Prefer Concept 3 General Comment		152
GN300	Prefer Concept 3 General Comment		155
GN400	Prefer Concept 4 General Comment		23
GN400	Prefer Concept 4 General Comment		52
GN400	Prefer Concept 4 General Comment		57

<b>Code</b>	<b>Description</b>	<b>Organization</b>	<b>ID</b>
<b>GN400</b>	Prefer Concept 4 General Comment		125
<b>GN400</b>	Prefer Concept 4 General Comment		136
<b>GN400</b>	Prefer Concept 4 General Comment		155
<b>GNC100</b>	General Project Concerns		117
<b>GNC100</b>	General Project Concerns		70
<b>GNC100</b>	General Project Concerns		88
<b>GNC100</b>	General Project Concerns		109
<b>GNC100</b>	General Project Concerns		121
<b>GNC100</b>	General Project Concerns		124
<b>GNC100</b>	General Project Concerns		130
<b>GNC100</b>	General Project Concerns		149
<b>GNS100</b>	General Project Support	EpicLava llc.	122
<b>GNS100</b>	General Project Support	Historic Hawai'i Foundation	140
<b>GNS100</b>	General Project Support		73
<b>GNS100</b>	General Project Support	Kilauea Military Camp (KMC)	50
<b>GNS100</b>	General Project Support		158
<b>GNS100</b>	General Project Support	The Nature Conservancy of Hawai'i	25
<b>GNS100</b>	General Project Support	Volcano Out & About	118
<b>GNS100</b>	General Project Support		93
<b>GNS100</b>	General Project Support		2
<b>GNS100</b>	General Project Support		5
<b>GNS100</b>	General Project Support		17
<b>GNS100</b>	General Project Support		32
<b>GNS100</b>	General Project Support		83
<b>GNS100</b>	General Project Support		113
<b>GNS100</b>	General Project Support		119
<b>GNS100</b>	General Project Support		134
<b>GNS100</b>	General Project Support		142
<b>GNS100</b>	General Project Support		155
<b>MT100</b>	Operation and Maintenance	Big Island Invasive Species Committee	71
<b>MT100</b>	Operation and Maintenance		18
<b>MT100</b>	Operation and Maintenance		84
<b>MT100</b>	Operation and Maintenance		144
<b>MT100</b>	Operation and Maintenance		145
<b>MT100</b>	Operation and Maintenance		150
<b>MT101</b>	Operation and Maintenance Concept 1		53
<b>MT101</b>	Operation and Maintenance Concept 1		3
<b>MT102</b>	Operation and Maintenance Concept 2		3
<b>MT103</b>	Operation and Maintenance Concept 3		145



<b>Code</b>	<b>Description</b>	<b>Organization</b>	<b>ID</b>
<b>NR100</b>	Natural Resource Concerns	Big Island Invasive Species Committee	71
<b>NR100</b>	Natural Resource Concerns	Office of Hawaiian Affairs	69
<b>NR100</b>	Natural Resource Concerns		38
<b>NR100</b>	Natural Resource Concerns		41
<b>NR100</b>	Natural Resource Concerns		48
<b>NR100</b>	Natural Resource Concerns		52
<b>NR100</b>	Natural Resource Concerns		77
<b>NR100</b>	Natural Resource Concerns		111
<b>NR100</b>	Natural Resource Concerns		119
<b>NR100</b>	Natural Resource Concerns		134
<b>NR100</b>	Natural Resource Concerns		145
<b>NR100</b>	Natural Resource Concerns		157
<b>NR101</b>	Natural Resource Concerns Concept 1		53
<b>NR101</b>	Natural Resource Concerns Concept 1		13
<b>NR101</b>	Natural Resource Concerns Concept 1		14
<b>NR101</b>	Natural Resource Concerns Concept 1		27
<b>NR101</b>	Natural Resource Concerns Concept 1		32
<b>NR101</b>	Natural Resource Concerns Concept 1		33
<b>NR101</b>	Natural Resource Concerns Concept 1		36
<b>NR101</b>	Natural Resource Concerns Concept 1		43
<b>NR101</b>	Natural Resource Concerns Concept 1		48
<b>NR101</b>	Natural Resource Concerns Concept 1		52
<b>NR101</b>	Natural Resource Concerns Concept 1		54
<b>NR101</b>	Natural Resource Concerns Concept 1		74
<b>NR101</b>	Natural Resource Concerns Concept 1		119
<b>NR101</b>	Natural Resource Concerns Concept 1		142
<b>NR101</b>	Natural Resource Concerns Concept 1		145
<b>NR102</b>	Natural Resource Concerns Concept 2		30
<b>NR102</b>	Natural Resource Concerns Concept 2		14
<b>NR102</b>	Natural Resource Concerns Concept 2		27
<b>NR102</b>	Natural Resource Concerns Concept 2		32
<b>NR102</b>	Natural Resource Concerns Concept 2		33
<b>NR102</b>	Natural Resource Concerns Concept 2		34
<b>NR102</b>	Natural Resource Concerns Concept 2		52
<b>NR102</b>	Natural Resource Concerns Concept 2		86
<b>NR102</b>	Natural Resource Concerns Concept 2		95
<b>NR102</b>	Natural Resource Concerns Concept 2		119
<b>NR102</b>	Natural Resource Concerns Concept 2		142
<b>NR102</b>	Natural Resource Concerns Concept 2		145
<b>NR102</b>	Natural Resource Concerns Concept 2		157

<b>Code</b>	<b>Description</b>	<b>Organization</b>	<b>ID</b>
<b>NR103</b>	Natural Resource Concerns Concept 3	Community Environmental Education	120
<b>NR103</b>	Natural Resource Concerns Concept 3		14
<b>NR103</b>	Natural Resource Concerns Concept 3		27
<b>NR103</b>	Natural Resource Concerns Concept 3		32
<b>NR103</b>	Natural Resource Concerns Concept 3		33
<b>NR103</b>	Natural Resource Concerns Concept 3		40
<b>NR103</b>	Natural Resource Concerns Concept 3		48
<b>NR103</b>	Natural Resource Concerns Concept 3		74
<b>NR103</b>	Natural Resource Concerns Concept 3		95
<b>NR103</b>	Natural Resource Concerns Concept 3		109
<b>NR103</b>	Natural Resource Concerns Concept 3		119
<b>NR103</b>	Natural Resource Concerns Concept 3		132
<b>NR103</b>	Natural Resource Concerns Concept 3		142
<b>NR103</b>	Natural Resource Concerns Concept 3		145
<b>NR104</b>	Natural Resource Concerns Concept 4	Mauka Makai Adventures	97
<b>NR104</b>	Natural Resource Concerns Concept 4		19
<b>NR104</b>	Natural Resource Concerns Concept 4		27
<b>NR104</b>	Natural Resource Concerns Concept 4		36
<b>NR104</b>	Natural Resource Concerns Concept 4		38
<b>NR104</b>	Natural Resource Concerns Concept 4		39
<b>NR104</b>	Natural Resource Concerns Concept 4		52
<b>NR104</b>	Natural Resource Concerns Concept 4		96
<b>NR104</b>	Natural Resource Concerns Concept 4		99
<b>NR104</b>	Natural Resource Concerns Concept 4		113
<b>NR104</b>	Natural Resource Concerns Concept 4		119
<b>NR104</b>	Natural Resource Concerns Concept 4		142
<b>NR104</b>	Natural Resource Concerns Concept 4		145
<b>OS100</b>	Out of Scope		26
<b>OS100</b>	Out of Scope		101
<b>OS100</b>	Out of Scope		129
<b>PD100</b>	Pedestrian Safety and Access		86
<b>PD100</b>	Pedestrian Safety and Access		146
<b>PD100</b>	Pedestrian Safety and Access		157
<b>PD101</b>	Pedestrian Safety and Access Concept 1	Historic Hawai'i Foundation	140
<b>PD101</b>	Pedestrian Safety and Access Concept 1		1
<b>PD101</b>	Pedestrian Safety and Access Concept 1		3
<b>PD101</b>	Pedestrian Safety and Access Concept 1		12
<b>PD101</b>	Pedestrian Safety and Access Concept 1		13
<b>PD101</b>	Pedestrian Safety and Access Concept 1		74
<b>PD101</b>	Pedestrian Safety and Access Concept 1		81
<b>PD101</b>	Pedestrian Safety and Access Concept 1		131

Code	Description	Organization	ID
PD102	Pedestrian Safety and Access Concept 2		156
PD103	Pedestrian Safety and Access Concept 3		2
PD103	Pedestrian Safety and Access Concept 3		20
PD103	Pedestrian Safety and Access Concept 3		27
PD103	Pedestrian Safety and Access Concept 3		85
PD103	Pedestrian Safety and Access Concept 3		100
PD104	Pedestrian Safety and Access Concept 4		3
PD104	Pedestrian Safety and Access Concept 4		18
PD104	Pedestrian Safety and Access Concept 4		54
PE100	Park Entrance		117
PE100	Park Entrance		81
PE100	Park Entrance		88
PE100	Park Entrance		145
PE100	Park Entrance		146
PE101	Park Entrance Concept 1		74
PE101	Park Entrance Concept 1		131
PE101	Park Entrance Concept 1		144
PE102	Park Entrance Concept 2		74
PE102	Park Entrance Concept 2		131
PE102	Park Entrance Concept 2		144
PE102	Park Entrance Concept 2		153
PE103	Park Entrance Concept 3		3
PE103	Park Entrance Concept 3		74
PE103	Park Entrance Concept 3		124
PE104	Park Entrance Concept 4		14
PE104	Park Entrance Concept 4		18
PE104	Park Entrance Concept 4		70
PE104	Park Entrance Concept 4		74
PE104	Park Entrance Concept 4		119
PE104	Park Entrance Concept 4		142
PK100	Parking Reduced	Edith Kanakaole Foundation	148
PK100	Parking Reduced	Office of Hawaiian Affairs	69
PK100	Parking Reduced		16
PK100	Parking Reduced		75
PK100	Parking Reduced		157
PK200	Parking Increased		17
PK200	Parking Increased		46
PK200	Parking Increased		48
PK200	Parking Increased		104
PK200	Parking Increased		119
PK200	Parking Increased		144
PK200	Parking Increased		151

Code	Description	Organization	ID
PK201	Parking Increased Concept 1		79
PK202	Parking Increased Concept 2		3
PK202	Parking Increased Concept 2		130
PK202	Parking Increased Concept 2		153
PK202	Parking Increased Concept 2		155
PK203	Parking Increased Concept 3		2
PK203	Parking Increased Concept 3		3
PK203	Parking Increased Concept 3		77
PK203	Parking Increased Concept 3		107
PK203	Parking Increased Concept 3		119
PK204	Parking Increased Concept 4		3
PK204	Parking Increased Concept 4		145
RM100	Request for materials	Red Road Press	15
RM100	Request for materials		4
RM100	Request for materials		6
RM100	Request for materials		7
RM100	Request for materials		8
RM100	Request for materials		9
RM100	Request for materials		10
RM100	Request for materials		28
RM100	Request for materials		29
RM100	Request for materials		51
RM100	Request for materials		133
TR100	Traffic Improvements		159
TR100	Traffic Improvements	Volcano Out & About	118
TR100	Traffic Improvements		22
TR100	Traffic Improvements		48
TR100	Traffic Improvements		157
TR101	Traffic Improvements Concept 1		90
TR101	Traffic Improvements Concept 1		12
TR101	Traffic Improvements Concept 1		37
TR101	Traffic Improvements Concept 1		52
TR101	Traffic Improvements Concept 1		70
TR101	Traffic Improvements Concept 1		134
TR101	Traffic Improvements Concept 1		135
TR102	Traffic Improvements Concept 2		13
TR102	Traffic Improvements Concept 2		27
TR102	Traffic Improvements Concept 2		31
TR102	Traffic Improvements Concept 2		32
TR102	Traffic Improvements Concept 2		44
TR102	Traffic Improvements Concept 2		52
TR102	Traffic Improvements Concept 2		87

<b>Code</b>	<b>Description</b>	<b>Organization</b>	<b>ID</b>
<b>TR102</b>	Traffic Improvements Concept 2		134
<b>TR102</b>	Traffic Improvements Concept 2		135
<b>TR102</b>	Traffic Improvements Concept 2		153
<b>TR102</b>	Traffic Improvements Concept 2		155
<b>TR103</b>	Traffic Improvements Concept 3		87
<b>TR103</b>	Traffic Improvements Concept 3		136
<b>TR104</b>	Traffic Improvements Concept 4		37
<b>TR104</b>	Traffic Improvements Concept 4		52
<b>TR104</b>	Traffic Improvements Concept 4		142
<b>TR200</b>	Traffic Increases	Coalition To Protect America's National Parks	76
<b>TR200</b>	Traffic Increases		1
<b>TR201</b>	Traffic Increases Concept 1		3
<b>TR201</b>	Traffic Increases Concept 1		74
<b>TR201</b>	Traffic Increases Concept 1		81
<b>TR201</b>	Traffic Increases Concept 1		119
<b>TR201</b>	Traffic Increases Concept 1		131
<b>TR201</b>	Traffic Increases Concept 1		145
<b>TR201</b>	Traffic Increases Concept 1		155
<b>TR203</b>	Traffic Increases Concept 3		85
<b>TR204</b>	Traffic Increases Concept 4	Community Environmental Education	120
<b>TR204</b>	Traffic Increases Concept 4		70
<b>TR204</b>	Traffic Increases Concept 4		135
<b>TR204</b>	Traffic Increases Concept 4		138
<b>US100</b>	USGS Building	Community Environmental Education	120
<b>US100</b>	USGS Building	EpicLava llc.	122
<b>US100</b>	USGS Building	Historic Hawai'i Foundation	140
<b>US100</b>	USGS Building	Office of Hawaiian Affairs	69
<b>US100</b>	USGS Building	Volcano Art Center	80
<b>US100</b>	USGS Building	Volcano Out & About	118
<b>US100</b>	USGS Building		98
<b>US100</b>	USGS Building		30
<b>US100</b>	USGS Building		90
<b>US100</b>	USGS Building		12
<b>US100</b>	USGS Building		13
<b>US100</b>	USGS Building		21
<b>US100</b>	USGS Building		31
<b>US100</b>	USGS Building		32
<b>US100</b>	USGS Building		33
<b>US100</b>	USGS Building		40

Code	Description	Organization	ID
US100	USGS Building		44
US100	USGS Building		48
US100	USGS Building		49
US100	USGS Building		54
US100	USGS Building		68
US100	USGS Building		74
US100	USGS Building		78
US100	USGS Building		79
US100	USGS Building		81
US100	USGS Building		82
US100	USGS Building		83
US100	USGS Building		85
US100	USGS Building		86
US100	USGS Building		87
US100	USGS Building		88
US100	USGS Building		92
US100	USGS Building		96
US100	USGS Building		103
US100	USGS Building		105
US100	USGS Building		106
US100	USGS Building		109
US100	USGS Building		112
US100	USGS Building		116
US100	USGS Building		119
US100	USGS Building		124
US100	USGS Building		131
US100	USGS Building		132
US100	USGS Building		134
US100	USGS Building		135
US100	USGS Building		138
US100	USGS Building		142
US100	USGS Building		144
US100	USGS Building		155
US100	USGS Building		157
VE100	Visitor Experience		159
VE100	Visitor Experience		108
VE100	Visitor Experience		53
VE100	Visitor Experience		1
VE100	Visitor Experience		2
VE100	Visitor Experience		13
VE100	Visitor Experience		38
VE100	Visitor Experience		40

Code	Description	Organization	ID
VE100	Visitor Experience		88
VE100	Visitor Experience		119
VE100	Visitor Experience		142
VE100	Visitor Experience		144
VE100	Visitor Experience		145
VE100	Visitor Experience		151
VE100	Visitor Experience		157
VE101	Visitor Experience Concept 1		30
VE101	Visitor Experience Concept 1		3
VE101	Visitor Experience Concept 1		12
VE101	Visitor Experience Concept 1		18
VE101	Visitor Experience Concept 1		43
VE101	Visitor Experience Concept 1		44
VE101	Visitor Experience Concept 1		59
VE101	Visitor Experience Concept 1		70
VE101	Visitor Experience Concept 1		79
VE101	Visitor Experience Concept 1		86
VE101	Visitor Experience Concept 1		94
VE101	Visitor Experience Concept 1		96
VE101	Visitor Experience Concept 1		99
VE101	Visitor Experience Concept 1		103
VE101	Visitor Experience Concept 1		130
VE101	Visitor Experience Concept 1		134
VE101	Visitor Experience Concept 1		135
VE101	Visitor Experience Concept 1		142
VE101	Visitor Experience Concept 1		144
VE101	Visitor Experience Concept 1		157
VE102	Visitor Experience Concept 2	EpicLava llc.	122
VE102	Visitor Experience Concept 2	Office of Hawaiian Affairs	69
VE102	Visitor Experience Concept 2		1
VE102	Visitor Experience Concept 2		18
VE102	Visitor Experience Concept 2		34
VE102	Visitor Experience Concept 2		39
VE102	Visitor Experience Concept 2		44
VE102	Visitor Experience Concept 2		92
VE102	Visitor Experience Concept 2		95
VE102	Visitor Experience Concept 2		96
VE102	Visitor Experience Concept 2		130
VE102	Visitor Experience Concept 2		135
VE102	Visitor Experience Concept 2		138
VE102	Visitor Experience Concept 2		142
VE102	Visitor Experience Concept 2		144

Code	Description	Organization	ID
VE102	Visitor Experience Concept 2		151
VE102	Visitor Experience Concept 2		155
VE102	Visitor Experience Concept 2		156
VE103	Visitor Experience Concept 3	Volcano Art Center	80
VE103	Visitor Experience Concept 3		2
VE103	Visitor Experience Concept 3		18
VE103	Visitor Experience Concept 3		27
VE103	Visitor Experience Concept 3		33
VE103	Visitor Experience Concept 3		41
VE103	Visitor Experience Concept 3		44
VE103	Visitor Experience Concept 3		54
VE103	Visitor Experience Concept 3		74
VE103	Visitor Experience Concept 3		78
VE103	Visitor Experience Concept 3		85
VE103	Visitor Experience Concept 3		95
VE103	Visitor Experience Concept 3		99
VE103	Visitor Experience Concept 3		103
VE103	Visitor Experience Concept 3		106
VE103	Visitor Experience Concept 3		114
VE103	Visitor Experience Concept 3		124
VE103	Visitor Experience Concept 3		130
VE103	Visitor Experience Concept 3		131
VE103	Visitor Experience Concept 3		135
VE103	Visitor Experience Concept 3		144
VE103	Visitor Experience Concept 3		151
VE103	Visitor Experience Concept 3		155
VE104	Visitor Experience Concept 4	Coalition To Protect America's National Parks	76
VE104	Visitor Experience Concept 4	Historic Hawai'i Foundation	140
VE104	Visitor Experience Concept 4		159
VE104	Visitor Experience Concept 4	Mauka Makai Adventures	97
VE104	Visitor Experience Concept 4		64
VE104	Visitor Experience Concept 4	Volcano Out & About	118
VE104	Visitor Experience Concept 4		30
VE104	Visitor Experience Concept 4		108
VE104	Visitor Experience Concept 4		1
VE104	Visitor Experience Concept 4		13
VE104	Visitor Experience Concept 4		14
VE104	Visitor Experience Concept 4		18
VE104	Visitor Experience Concept 4		27
VE104	Visitor Experience Concept 4		32
VE104	Visitor Experience Concept 4		33



<b>Code</b>	<b>Description</b>	<b>Organization</b>	<b>ID</b>
<b>VE104</b>	Visitor Experience Concept 4		35
<b>VE104</b>	Visitor Experience Concept 4		44
<b>VE104</b>	Visitor Experience Concept 4		54
<b>VE104</b>	Visitor Experience Concept 4		58
<b>VE104</b>	Visitor Experience Concept 4		70
<b>VE104</b>	Visitor Experience Concept 4		74
<b>VE104</b>	Visitor Experience Concept 4		79
<b>VE104</b>	Visitor Experience Concept 4		81
<b>VE104</b>	Visitor Experience Concept 4		82
<b>VE104</b>	Visitor Experience Concept 4		88
<b>VE104</b>	Visitor Experience Concept 4		96
<b>VE104</b>	Visitor Experience Concept 4		110
<b>VE104</b>	Visitor Experience Concept 4		124
<b>VE104</b>	Visitor Experience Concept 4		130
<b>VE104</b>	Visitor Experience Concept 4		131
<b>VE104</b>	Visitor Experience Concept 4		132
<b>VE104</b>	Visitor Experience Concept 4		142
<b>VE104</b>	Visitor Experience Concept 4		144
<b>VE104</b>	Visitor Experience Concept 4		145
<b>VE104</b>	Visitor Experience Concept 4		155
<b>VI101</b>	Visual Impacts Concept 1	Volcano Out & About	118
<b>VI103</b>	Visual Impacts Concept 3		144
<b>VI104</b>	Visual Impacts Concept 4		145

THIS PAGE INTENTIONALLY LEFT BLANK.

**Appendix C**  
**Materials Provided During Civic Engagement**

THIS PAGE INTENTIONALLY LEFT BLANK.



## Hawai'i Volcanoes Disaster Recovery – Concept Development Narrative



The impact of the 2018 summit collapse caused profound changes to Kīlauea caldera and Halema'uma'u Crater (right).  
NPS Photo/J.Wei taken from Uēkahuna Bluff.

### SUPERINTENDENT'S MESSAGE

E Aloha,

Hawai'i Volcanoes National Park is pleased to present for your consideration the initial draft design concepts for the proposed Disaster Recovery Project. The intent of this project is to repair and/or replace critical park infrastructure and U.S. Geological Survey-operated facilities damaged during the 2018 eruption and summit collapse of Kīlauea volcano. The project addresses potential future use of the Uēkahuna Bluff area and other park sites. Uēkahuna Bluff is an area of geologic, natural and cultural significance and is regarded as sacred by Native Hawaiians and other groups.

The National Park Service and U.S. Geological Survey are currently evaluating four draft design concepts with additional draft elements common to all concepts. Your feedback is critical at this important step in this evaluation process. In our normal process, we would hold a meeting to hear your input in person. However, due to Covid-19 and following Centers for Disease Control guidelines, the NPS is conducting this essential civic engagement virtually to maintain social distancing mitigations, and greatly values your participation. We are offering several ways for you to provide feedback:

- Visit <https://parkplanning.nps.gov/HAVODisasterRecovery> for an overview of the draft concepts and the draft elements that would be common to all, and to submit your comments
- We have a phone line dedicated to receiving your comments on this project. You can leave a detailed message or request that someone call you back at (808) 460-6212.
- Those who prefer printed copies can also call (808) 460-6212, or email [havo\\_planning@nps.gov](mailto:havo_planning@nps.gov).

Park staff, partners, and volunteers remain committed to fulfilling our kuleana to protect the rich geologic, natural, and cultural heritage, and providing inspirational visitor experiences at Hawai'i Volcanoes National Park.

We appreciate your continued interest in the park and hope that you will continue to stay engaged with the planning process.

Mahalo nui loa,

Rhonda Loh, Acting Superintendent

## INTRODUCTION

The focus of this planning effort is the repair, replacement, removal or relocation of the facilities and functions that were damaged at Uēkahuna Bluff in the park by the 2018 volcanic disaster. The project also addresses continued and potential future use of the area that has important geologic, natural, and cultural significance, and is considered by Native Hawaiians and other groups as a sacred area. Affected facilities include the Reginald T. Okamura (Okamura) building and the adjacent Geochemistry Annex (Annex) building - both operated by the U.S. Geological Survey-Hawaiian Volcano Observatory (HVO), and the historic Jaggar Museum.

The following four draft design concepts are being evaluated and include plans for restoring visitor services and USGS-operated facilities at alternate locations in the summit area of Kīlauea volcano, as well as plans to demolish some facilities at the Uēkahuna Bluff. This planning effort is an opportunity to address other long-standing issues related to traffic, parking congestion, high demand on existing facilities, and resource impacts.

We are taking a comprehensive, long-term approach to recovery planning consistent with recommendations in the park's 2016 General Management Plan. Not all elements of the concepts would be funded by disaster recovery and it is likely that the final overall concept would be designed and constructed in phases over multiple years as funding allows. The first phase will be focused on those efforts tied directly to replacement of lost facilities and functions.



*Halema'uma'u Crater Before & After – November 28, 2008 (left); August 1, 2018 (right) – USGS Photos*



## ASPECTS COMMON TO ALL DRAFT CONCEPTS

All concepts being evaluated would include the following proposed actions. See the matrix at the end of this section for a summary of relevant differences between existing and proposed conditions.

### Uēkahuna Bluff

- Due to damage sustained in the 2018 eruption, the historic Jaggar Museum and non-historic Reginald T. Okamura (Okamura) building would be demolished, and most of the existing footprint would be restored to natural conditions. Some remnant elements from the buildings may be salvaged and incorporated into a viewing shelter located on site.
- The Geochemistry Annex (Annex) building would be repaired for interim use by U.S. Geological Survey-Hawaiian Volcanoes Observatory (HVO) and National Park Service (NPS) administration until the new USGS field station is completed, at which time the Annex may be demolished.
- The existing restrooms would be repaired for continued visitor use.
- The existing paved and walled overlook in front of the restrooms, Annex and Jaggar Museum would be repaired and improved. Improvements would include enlarging the overlook to incorporate some of the footprint of the Jaggar Museum and adding an open-air viewing shelter.
- A second area, previously used by the public as an informal viewing area, would become a formalized overlook, with possible hard surface and perimeter walls, located along Crater Rim Trail south of the public parking area. The existing Crater Rim Trail would be maintained.
- The existing radio tower and radio room will remain. The existing water tanks may be replaced or removed, depending on if the Annex remains long term. In the future and if needed, add visitor parking capacity by constructing a new parking lot on the other side of Crater Rim Drive. This would alleviate severe congestion and resource damage that occurs during summit eruptions. The Jaggar Museum to Nāmakanipaio Trail connection would be re-routed if this parking is constructed.



*Facilities at Uēkahuna Bluff - USGS Photo*



### Kīlauea Visitor Center Area

- The existing trails around Kīlauea Visitor Center (KVC) would be connected to form a loop trail connecting the visitor center to other amenities and nearby overlooks.
- The existing covered lanai at KVC would be reduced in size to restore the integrity of the historic KVC building. The current outdoor exhibits would be replaced and relocated to a new covered lanai area.
- The existing restrooms next to KVC would be renovated.
- The park entrance road and kiosk would be modified to improve vehicle circulation and reduce congestion.

### Kīlauea Research and Administrative Area

- USGS Pacific Island Ecosystems Research Center - Kīlauea Field Station (PIERC-KFS) buildings. The majority of staff and functions would move to a new facility in Hilo, HI. The remainder would relocate to a new USGS Field Station in the park, that would house both PIERC-KFS and HVO field operations. (See Concepts 1 through 4 for proposed locations of new USGS Field Station).
- Existing PIERC-KFS occupied buildings (343, 344, 216, 295) would be converted to NPS administrative use.
- Portions of the non-historic NPS office space in the research area would be demolished.

### COMMON TO ALL MATRIX

<b>Uēkahuna Bluff</b>	<b>Existing</b>	<b>Proposed</b>
Okamura Building (sf) <sup>1</sup>	22,500	0
Jaggar Museum (sf) <sup>1</sup>	3,975	0
Annex Building (sf) <sup>2</sup>	3,800	3,800
Restroom Building (sf)	950	950
Interpretive Overlook (sf) <sup>3,4</sup>	9,700	19,600
Visitor Passenger Vehicle Stalls	72	144
Visitor Large Vehicle Stalls	7	14
NPS/USGS Passenger Vehicle Stalls	23	23
<b>Research Area</b>	<b>Existing</b>	<b>Proposed</b>
PIERC Building (sf) <sup>5</sup>	12,470	12,470
NPS Office Space(sf) <sup>6</sup>	3,312	0
New USGS Field Station <sup>7</sup>	0	12,000

<sup>1</sup> Entire Okamura Building footprint and approximately 900 square feet (sf) of Jaggar Museum footprint would be restored to natural conditions.

<sup>2</sup> The Annex building will be repaired for interim administrative use and may later be demolished.

<sup>3</sup> Existing overlook area measured from aerial imagery and is approximate.

<sup>4</sup> 2,900 sf of overlook expansion would be within footprint of former Jaggar Museum and would include 2,800 sf open air viewing shelter. 7,000 sf of proposed interpretive overlook would be the new formalized overlook connected to the parking lot.

<sup>5</sup> All PIERC-KFS space to be vacated for use by NPS.

<sup>6</sup> Non-historic NPS office space to be demolished.

<sup>7</sup> See concept descriptions for proposed USGS Field Station locations.



---

## CONCEPT DESCRIPTIONS:

The following draft concepts provide options for replacement of park visitor center functions and visitor use capacity lost through damage to Jaggar Museum. They also provide a new USGS Field Station facility to replace the functions and capacity lost by HVO at the Okamura building as well as the PIERC-KFS operations that remain following relocation of the majority of their functions to Hilo. Proposed improvements would maintain the historic character, utilize compatible design styles and materials, leverage existing facilities and to the greatest extent possible, minimize impacts to existing features and functions. These project goals are achieved in a different manner with each of the concepts. See the matrix at the end of this section for a summary of relevant differences between concepts.

### Concept 1

#### Concept Statement:

**Create a consolidated interpretive, education and research campus by relocating facilities and functions formerly at Uēkahuna to an area adjacent to existing primary visitor use areas. Construct a new stand-alone visitor center on the south/caldera side of the Crater Rim Drive to enhance pedestrian connectivity to most visitor facilities and caldera views. The current KVC is repurposed as an education center. USGS functions are located adjacent to the visitor use area. Leverage existing parking and utilities with minor realignment and expansion needed to accommodate replacement facilities and visitor use levels.**

- A new visitor center with a separate restroom building would be constructed on the south side of Crater Rim Drive near the park entrance in a currently forested area, and includes a covered lanai, outdoor exhibits, theater, visitor parking, bus parking, NPS administrative parking, pedestrian circulation, and a new wastewater system.
- A new visitor center would be large enough to accommodate the visitor functions currently provided at KVC and previously provided by Jaggar Museum.
- A new visitor center would allow a single, easy-to-find stop for the interpretation of the park's defining features in a coordinated and consolidated manner.
- New covered picnic tables would be constructed in the existing picnic area adjacent to the 1877 Volcano House.
- Visitor use in the KVC building would be relocated to the new visitor center. The existing KVC building would be repurposed as an education center with existing NPS office and auditorium uses being maintained.
- The existing education center in the NPS administrative area would be repurposed for NPS administrative use.
- A new USGS HVO & PIERC-KFS Field Station, parking and wastewater system would be constructed to the east of the KVC building in a section of previously disturbed forest which is fragmented by utility corridors and an unpaved parking lot.
- An administrative bypass lane, additional fee booth and replacement staff parking would be added to the existing entrance station.
- Crater Rim Drive would be realigned and a roundabout would be constructed to improve traffic flow, safety and wayfinding at the Crater Rim Drive intersection.
- Existing water and communications lines would be utilized with minor relocation and connection spurs.

## Concept 2

### Concept Statement:

**Consolidate visitor use adjacent to existing primary visitor area. Construct a new stand-alone visitor center east of the existing one. The existing KVC is repurposed as an education center. Leverage existing parking and utilities with expansion needed to accommodate replacement facilities and visitor use levels. USGS functions are separated from the main visitor use area at the park but are still in close proximity to park emergency operations.**

- A new visitor center with interior restrooms would be constructed east of KVC and includes a covered lanai, outdoor exhibits, theater, visitor parking, bus parking and pedestrian circulation.
- A new visitor center would be large enough to accommodate visitor functions currently provided by KVC and previously provided by Jaggar Museum
- A new visitor center would allow a single, easy-to-find stop for the interpretation of the park's defining features in a coordinated and consolidated manner.
- New covered picnic tables would be constructed in the existing picnic area adjacent to the 1877 Volcano House.
- Visitor use in the KVC building would be relocated to the new visitor center. The existing KVC building would be repurposed as an education center with existing NPS office and auditorium uses being maintained.
- The existing education center in the NPS administrative area would be repurposed for NPS administrative use.
- A new USGS HVO & PIERC-KFS Field Station, parking and wastewater system would be constructed near the Visitor Emergency Operations Center (VEOC) in a currently forested area.
- An administrative bypass lane, additional fee booth and replacement staff parking would be added to the entrance station.
- Crater Rim Drive would be realigned, and a roundabout would be constructed to improve traffic flow, safety and wayfinding at the Crater Rim Drive intersection.
- Existing water and communications lines would be utilized with minor relocation and connection spurs.

## Concept 3

### Concept Statement:

**Maximize reuse of existing visitor space by repurposing the existing visitor center and auditorium area and constructing an adjacent smaller new visitor center and expanded parking area. Leverage existing parking and utilities with expansion needed to accommodate replacement facilities and visitor use levels. USGS functions are separated from NPS functions and relocated to the former ballfield area, west of the Kilauea Military Camp (KMC) land assignment.**

- A new visitor center addition (separate building) would be constructed on the west side of the KVC in an existing developed landscape and includes a covered lanai and outdoor exhibits along with visitor parking, bus parking and pedestrian circulation. The lanai would connect to visitor parking and the KVC.
- Together, the existing KVC and smaller visitor center addition would accommodate visitor functions currently provided at KVC and previously provided by Jaggar Museum
- The existing KVC lobby would be used for an expanded bookstore and orientation information. Exhibits will be replaced in the new visitor center addition.
- The visitor experience would be segmented into two separate buildings with enhanced wayfinding to guide visitors between areas/buildings.

- A new USGS HVO & PIERC-KFS Field Station and parking would be constructed in the historic former ballfield area, adjacent to the Kilauea Military Camp (KMC) land assignment.
- A new water line, water tank and wastewater system would be constructed adjacent to the new USGS HVO & PIERC-KFS Field Station.
- A new two kiosk entrance station would be constructed to the west of the existing kiosks, which would be demolished. An administrative bypass lane would be added to reduce traffic congestion at the entrance.
- Crater Rim Drive would be realigned to improve vehicular circulation in the KVC area.

#### Concept 4

##### Concept Statement:

**Relocate the functions lost at Uēkahuna to the former ballfield area adjacent to the KMC land assignment. Visitor services currently provided at KVC and formerly provided at Jaggar Museum are combined in a new visitor center at the former ballfield. A new USGS field station is constructed adjacent and west of the new visitor center. Construct new parking and utility infrastructure to support the new facilities. The existing KVC is repurposed to an education center.**

- A new visitor center with a separate restroom building would be constructed in the former historic ballfield area, adjacent to the KMC land assignment, and includes a covered lanai, outdoor exhibits, visitor parking, bus parking, NPS administrative parking and pedestrian circulation.
- A new USGS HVO & PIERC-KFS Field Station and parking would be constructed adjacent to the new visitor center.
- A new shared water line, water tank and wastewater systems would be constructed adjacent to the new visitor center and USGS HVO & PIERC-KFS Field Station.
- Visitor use in the KVC building would be relocated to the new visitor center. The existing KVC building would be repurposed as an education center with existing NPS office and auditorium uses being maintained.
- The existing education center in the NPS administrative area would be repurposed for NPS administrative use.
- New covered picnic tables would be constructed in the existing picnic area adjacent to the 1877 Volcano House.
- An administrative bypass lane and additional fee booth would be added to the park entrance station.
- Crater Rim Drive would be realigned to improve vehicular circulation in the KVC area.

**CONCEPT MATRIX**

<b>Parking Stalls*</b>	<b>Existing</b>	<b>Concept 1</b>	<b>Concept 2</b>	<b>Concept 3</b>	<b>Concept 4</b>
Visitor Passenger Vehicle	123	239	235	228	243
Visitor Large Vehicle/Bus	8	16	16	14	24
NPS Administrative	50	59	34	50	70
USGS Administrative	0	35	35	35	35
<b>Facility Areas (in square feet)</b>	<b>Existing</b>	<b>Concept 1</b>	<b>Concept 2</b>	<b>Concept 3</b>	<b>Concept 4</b>
Visitor Center/Restrooms**	11,845	16,220	16,220	13,870	16,220
Covered Lanai	1,750	13,700	12,200	11,800	12,100
Education Center	3,300	5,800	5,800	3,300	5,800

\*Includes parking at KVC Area, VEOC, and Former Ballfield. Does not include parking at Uēkahuna or Research area.

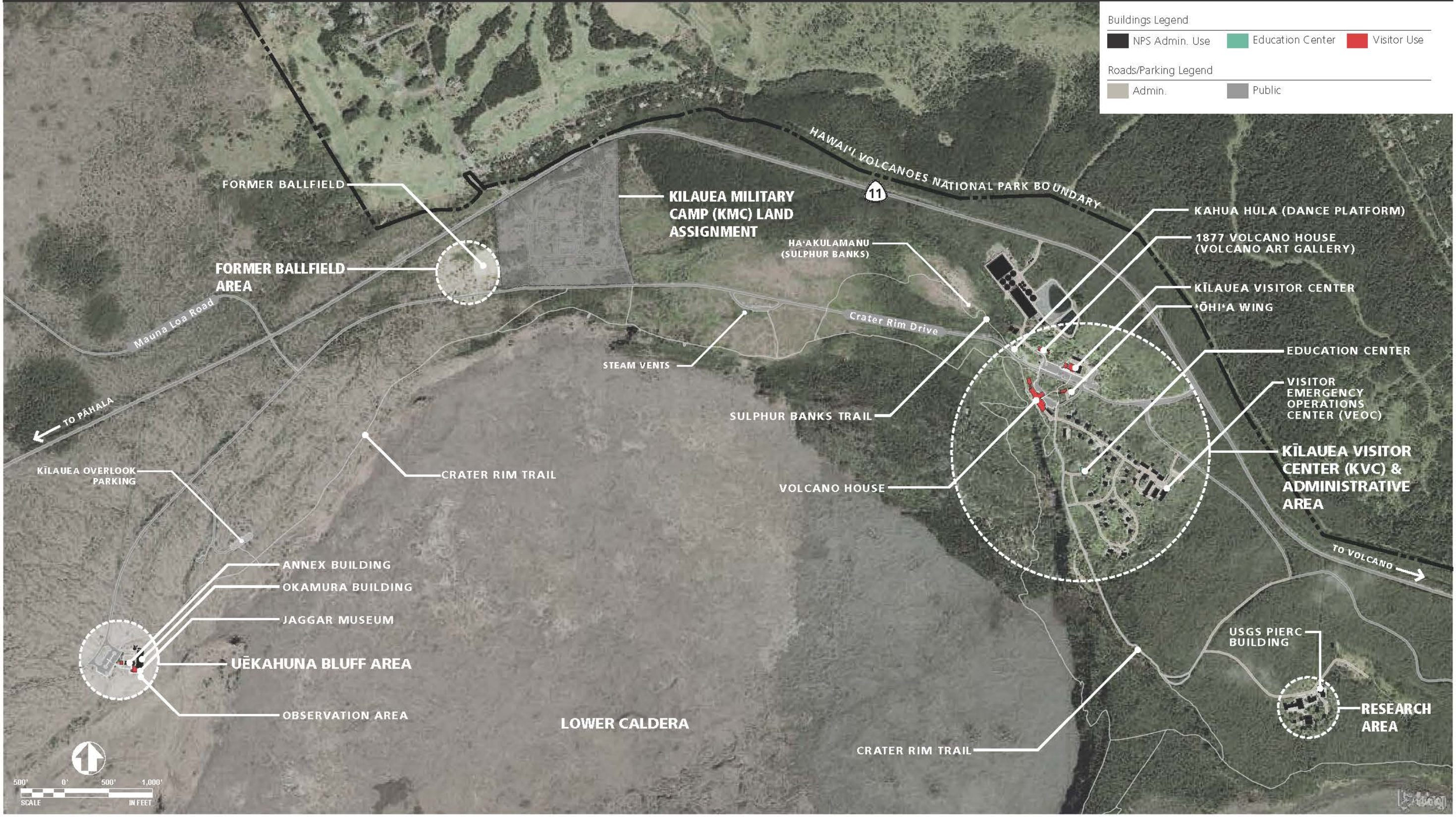
\*\*Existing area includes Jaggar Museum (3,975 sf), KVC (5,800 sf), Uēkahuna restroom (950 sf), and KVC restroom (1,120 sf)

See actions common to all for USGS Facility Areas



*Uēkahuna Bluff above Halema'ūma'u Crater - NPS Photo, Jon Christensen*







# Disaster Recovery - Concept Development

## Existing Conditions | Kīlauea Visitor Center Area



Buildings Legend

■ NPS Admin. Use	■ Visitor Use
------------------	---------------

Roads/Parking Legend

■ Admin.	■ Public
----------	----------



Disaster Recovery - Concept Development  
Existing Conditions | VEOC Area



Buildings Legend

NPS Admin. Use	Visitor Use
----------------	-------------

Roads/Parking Legend

Admin.	Public
--------	--------

60' 0' 60' 120'

SCALE IN FEET

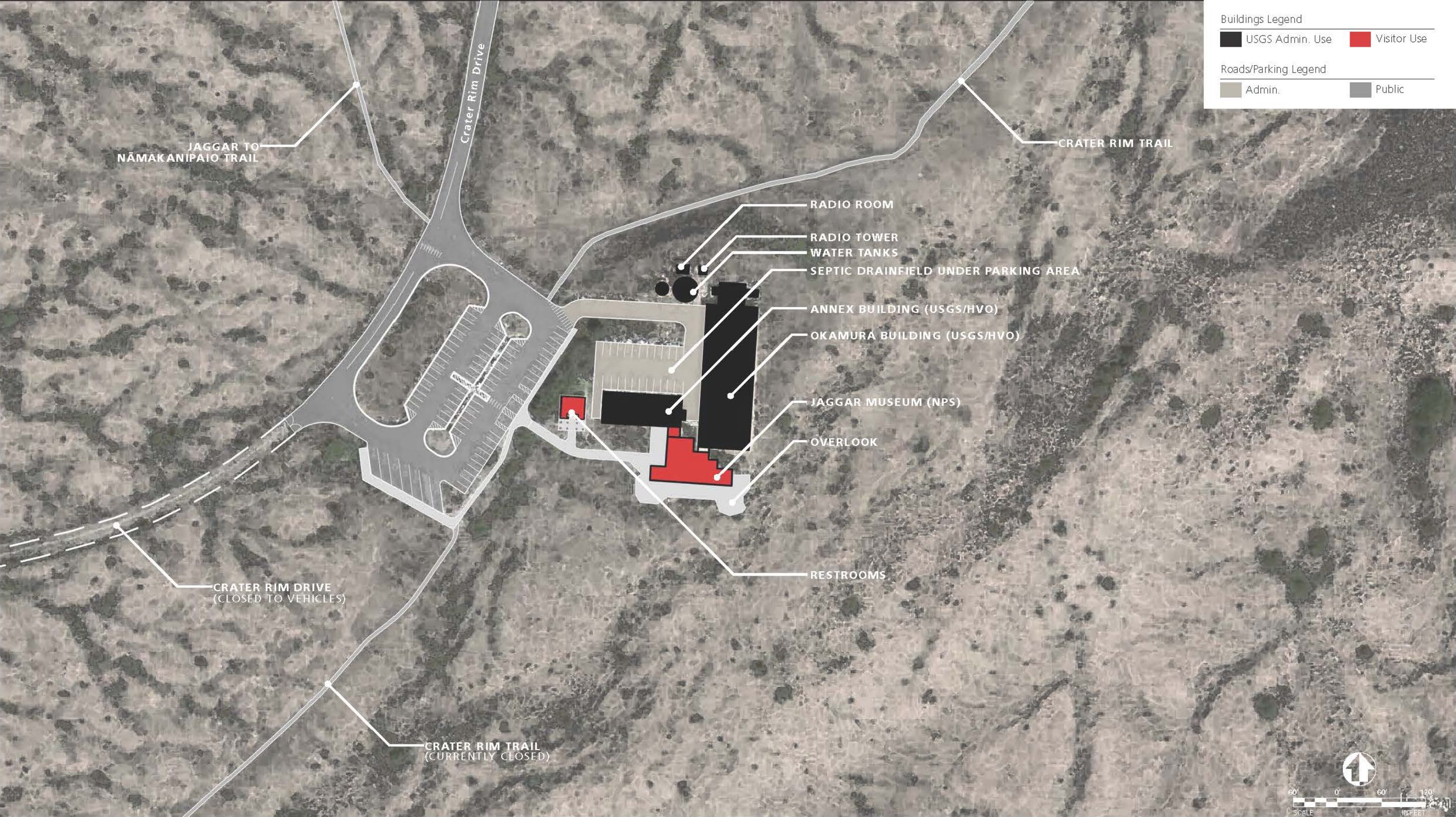


Existing Conditions | NPS Field Area (adjacent to KMC Land Assignment)



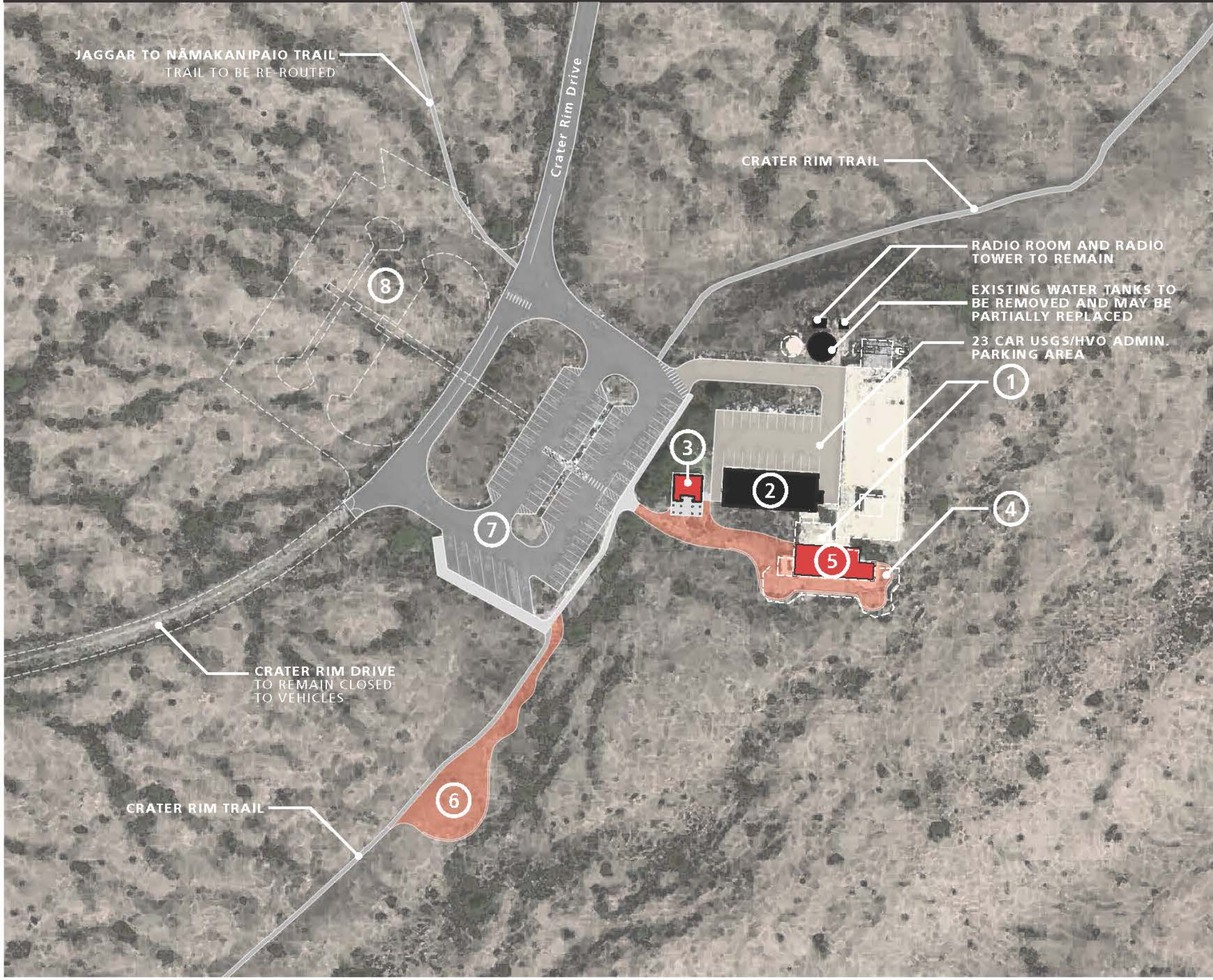


Disaster Recovery - Concept Development  
Existing Conditions | Uēkahuna Bluff





Disaster Recovery - Concept Development  
Common to All | Uēkahuna Bluff



- ① Demolish historic Jaggar Museum (3,975 sf) and non-historic Okamura Building (22,500 sf). Restore a majority of existing footprint to natural conditions.\*
- ② Repair Annex Building (3,800 sf) for interim use by USGS and NPS until the new USGS field station is completed at which time the annex may be demolished.
- ③ Repair Restrooms (950 sf) for visitor use.
- ④ Repair and expand interpretive overlook.\*
- ⑤ Construct new open air viewing Shelter (2,800 sf) in former Jaggar Museum site.\*
- ⑥ Construct new formalized overlook with possible hard surface and perimeter walls along existing trail/viewing area.
- ⑦ Maintain existing public parking lot with 72 passenger vehicle spaces and 7 bus spaces.
- ⑧ Construct additional parking lot to double parking capacity in this area (future if needed).

\*Some remnant architectural elements from buildings and overlook may be salvaged and incorporated into new facilities.

Buildings Legend

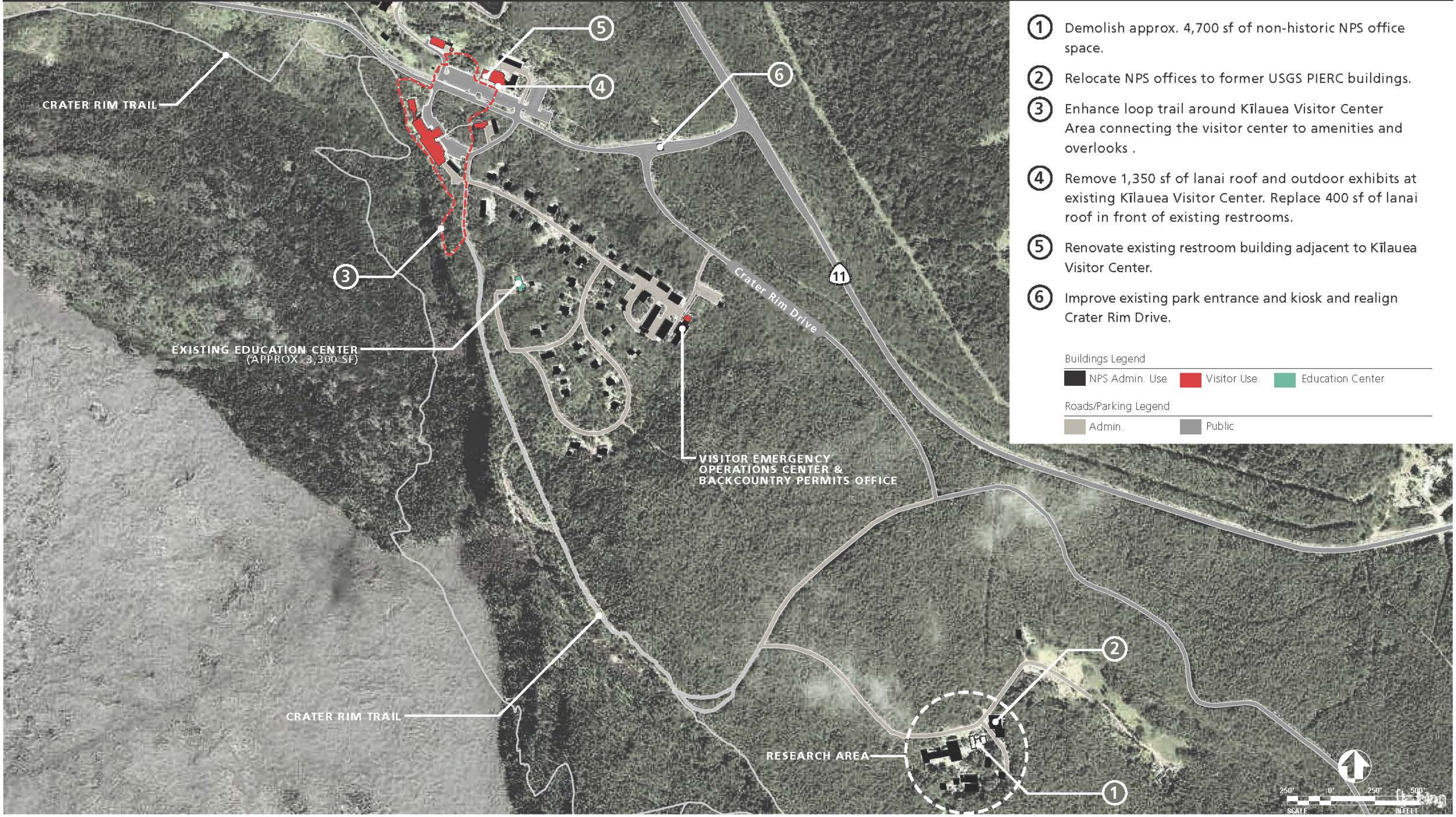
USGS/NPS Admin. Use	Interpretive Lanai/Overlook
Visitor Use	

Roads/Parking Legend

Admin.	Public
--------	--------



Disaster Recovery - Concept Development  
Common to All | Kīlauea Visitor Center Area



- ① Demolish approx. 4,700 sf of non-historic NPS office space.
- ② Relocate NPS offices to former USGS PIERC buildings.
- ③ Enhance loop trail around Kīlauea Visitor Center Area connecting the visitor center to amenities and overlooks .
- ④ Remove 1,350 sf of lanai roof and outdoor exhibits at existing Kīlauea Visitor Center. Replace 400 sf of lanai roof in front of existing restrooms.
- ⑤ Renovate existing restroom building adjacent to Kīlauea Visitor Center.
- ⑥ Improve existing park entrance and kiosk and realign Crater Rim Drive.

Buildings Legend

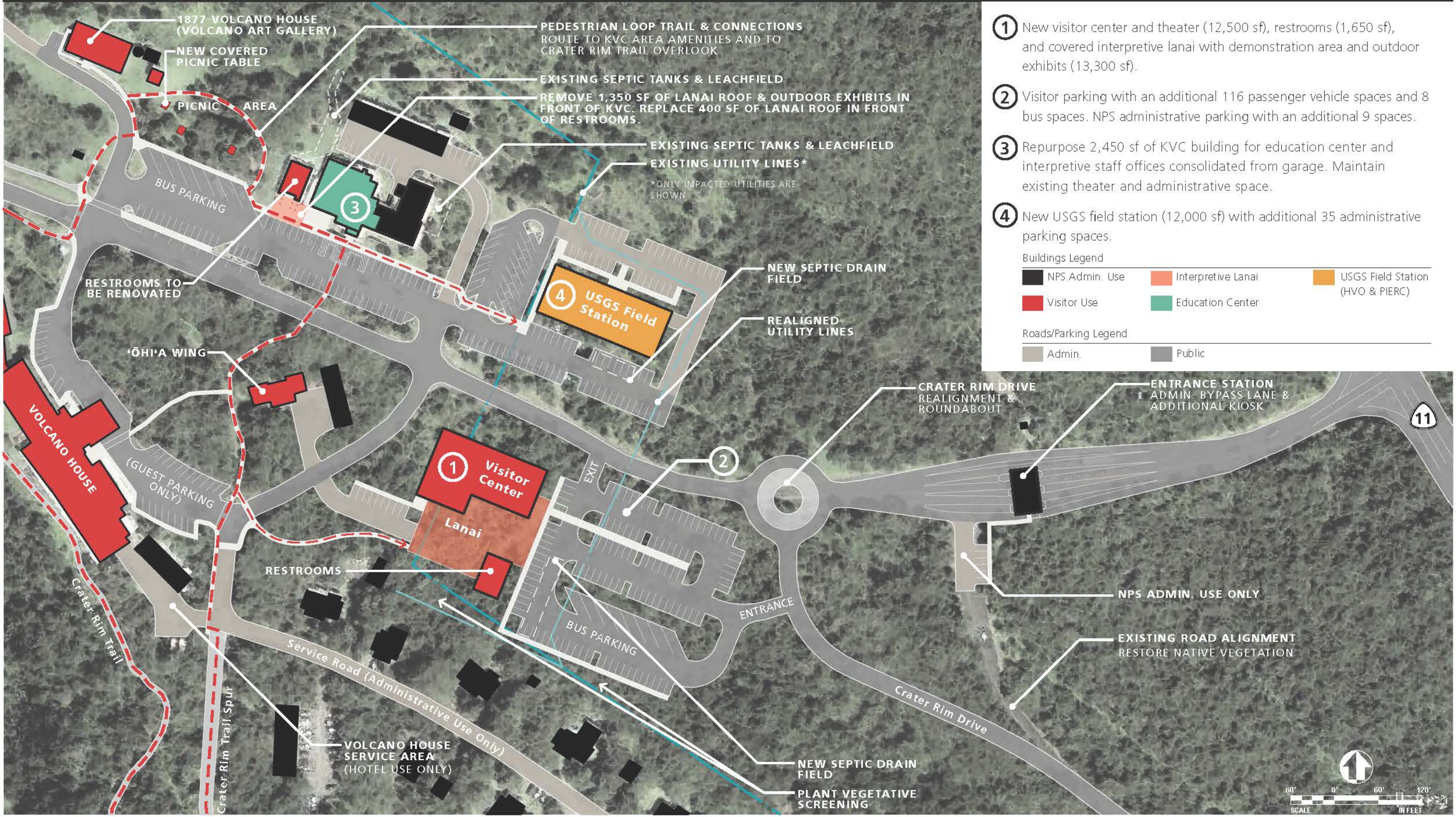
NPS Admin. Use	Visitor Use	Education Center
----------------	-------------	------------------

Roads/Parking Legend

Admin.	Public
--------	--------



Disaster Recovery - Concept Development  
Concept 1 | Kīlauea Visitor Center (KVC) Area





Disaster Recovery - Concept Development  
Concept 2 | Kīlauea Visitor Center (KVC) Area



- ① New visitor center with restrooms and theater (14,150 sf) and covered interpretive lanai (11,800 sf).
- ② Visitor parking with an additional 111 passenger vehicle spaces and 8 bus spaces.
- ③ Repurpose 2,450 sf of KVC building for education center and interpretive staff offices consolidated from garage. Maintain existing theater and administrative space.

Buildings Legend	
NPS Admin. Use	Interpretive Lanai
Visitor Use	Education Center
Roads/Parking Legend	
Admin.	Public



Disaster Recovery - Concept Development  
Concept 2 | VEOC Area



- ① New USGS field station (12,000 sf), with 5 public passenger vehicle parking spaces and 42 USGS/NPS admin. parking spaces.

Buildings Legend

■ NPS Admin. Use	■ USGS Field Station (HVO & PIERC)
■ Visitor Use	

Roads/Parking Legend

■ Admin.	■ Public
----------	----------



Disaster Recovery - Concept Development  
Concept 3 | Kīlauea Visitor Center (KVC) Area





Disaster Recovery - Concept Development  
Concept 3 | NPS Field Area (adjacent to KMC Land Assignment)



① New USGS field station (12,000 sf) with 35 parking spaces.

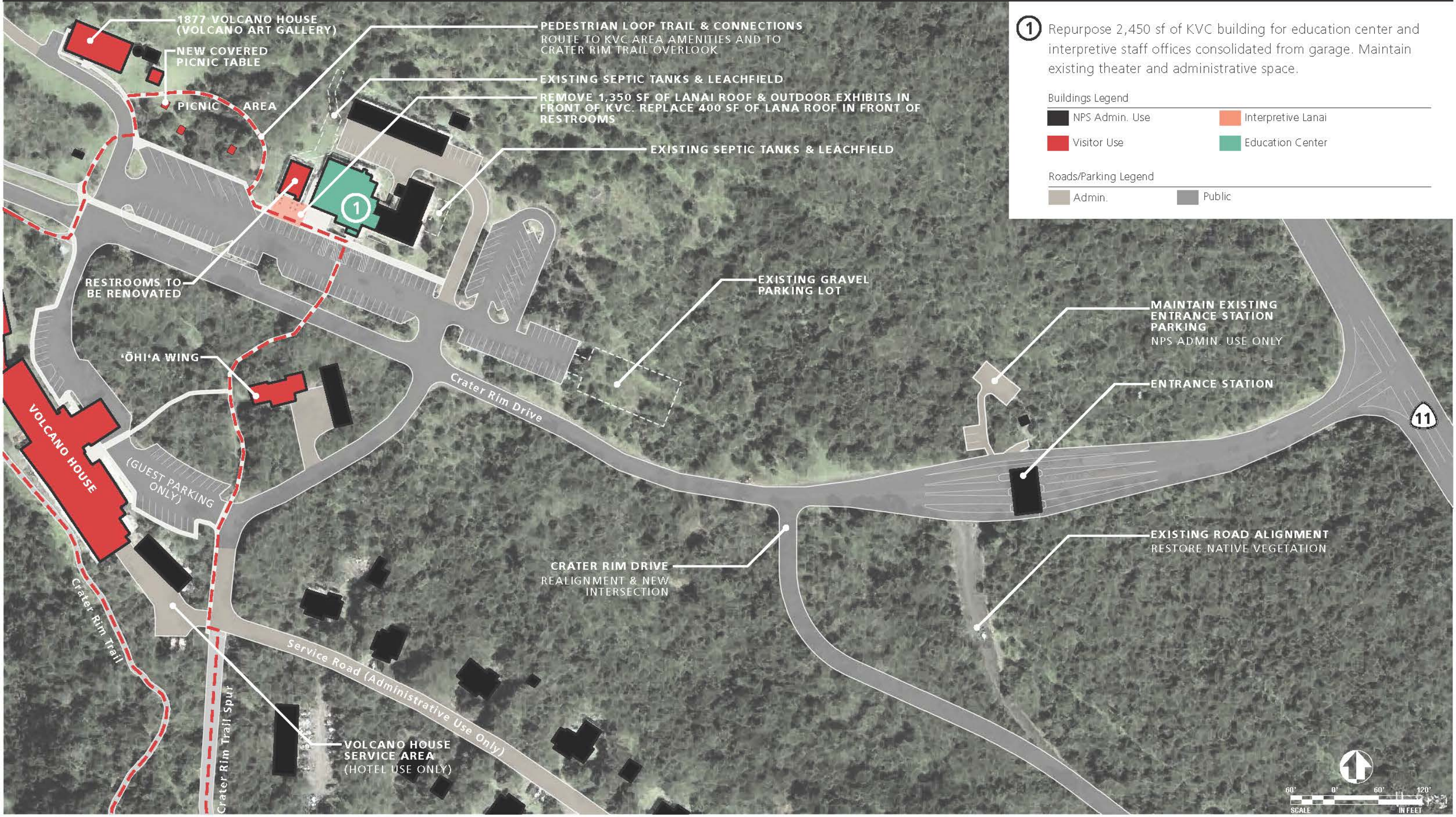
- Buildings Legend
- USGS Field Station (HVO & PIERC)
- Roads/Parking Legend
- Admin.
  - Public





# Disaster Recovery - Concept Development

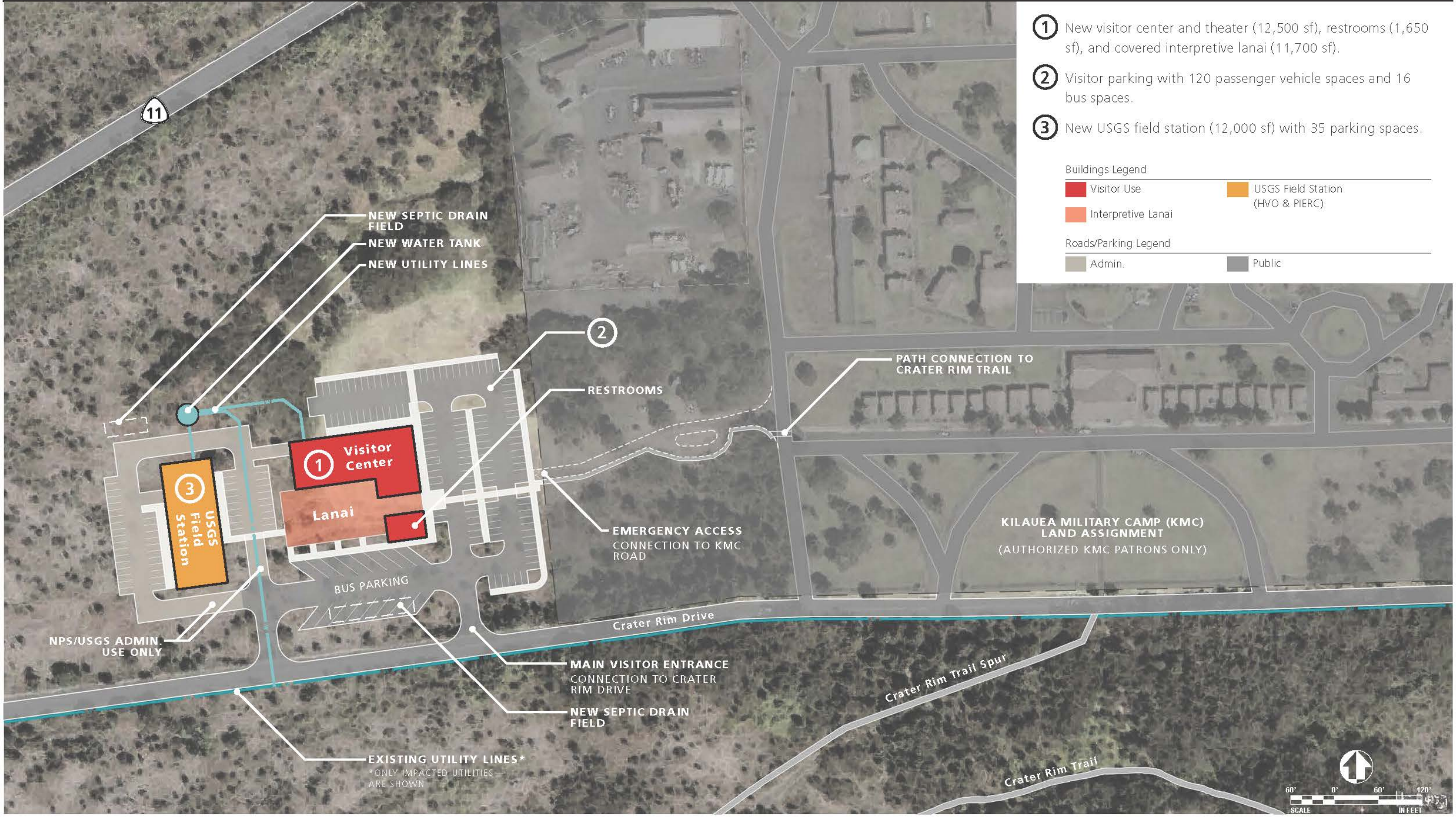
## Concept 4 | Kīlauea Visitor Center (KVC) Area





# Disaster Recovery - Concept Development

## Concept 4 | NPS Field Area (adjacent to KMC Land Assignment)



- ① New visitor center and theater (12,500 sf), restrooms (1,650 sf), and covered interpretive lanai (11,700 sf).
- ② Visitor parking with 120 passenger vehicle spaces and 16 bus spaces.
- ③ New USGS field station (12,000 sf) with 35 parking spaces.

Buildings Legend	
<span style="color: red;">■</span> Visitor Use	<span style="color: orange;">■</span> USGS Field Station (HVO & PIERC)
<span style="color: orange;">■</span> Interpretive Lanai	
Roads/Parking Legend	
<span style="color: gray;">■</span> Admin.	<span style="color: darkgray;">■</span> Public



Hawai'i Volcanoes National Park (HAVO), a unit of the National Park Service (NPS), would like to invite you to provide comments to assist in considering and refining the initial concepts for the proposed HAVO Disaster Recovery Project. The intent of this project is to repair and/or replace critical park infrastructure and visitor facilities damaged in the 2018 eruption, addressing NPS and USGS long-term operational and visitor use needs. The project will also address the short-term needs of the NPS and the U.S. Geological Survey in the Uēkahuna Bluff area.

We value every comment we receive. Feel free to attach additional sheets as needed. If you prefer, you can comment online at <https://parkplanning.nps.gov/HAVODisasterRecovery>

This image shows a blank sheet of white paper with horizontal ruling lines. The lines are evenly spaced and run across the width of the page. There are no margins, text, or other markings on the paper.



Hawai'i Volcanoes National Park  
ATTN: Disaster Recovery Project  
PO Box 52  
Hawaii National Park, HI 96718

-----  
Official Business  
Penalty for Private Use \$300

Superintendent  
Attn: Disaster Recovery Project  
PO Box 52  
Hawaii National Park, HI 96718-0052

-----  
TO MAIL BACK, FOLD HERE AND TAPE BELOW (NO STAPLES PLEASE)

*Before including your address, phone number, e-mail address, or other personal identifying information in your comment, you should be aware that your entire comment, including your personal identifying information, may be made publicly available at any time. While you can ask us to withhold your personal identifying information from public review, we cannot guarantee that we will be able to do so.*

**HELP US KEEP OUR MAILING LIST UP-TO-DATE:**

- ☐ Please add my name to the mailinglist.
- ☐ I prefer to receive mailings via e-mail (please provide your email on the other side of this sheet).
- ☐ Please remove my name from the mailinglist.
- ☐ The name or address you have is incorrect. Update my contact information (include new name and address in your comments on the other side of this sheet).

You can also update your contact information for the park's mailing list at the following link:  
<http://www.nps.gov/havo/parkmgmt/plan.htm>