

National Park Service  
U.S. Department of the Interior



# Amache Special Resource Study



*Photos by John Tonai*

August 1, 2020 Virtual Meeting

EXPERIENCE YOUR AMERICA

# Agenda

- Introduction of staff
- Addressing Terminology
- Background on Amache
- Special Resource Study Process
- Breakout Sessions



*Photo by John Tonai*

# Housekeeping

- How to navigate Zoom
- How to mute/unmute yourself
- How to raise your hand
- Please do not take calls during this session



# Introduction to NPS Staff



**Tamara Delaplane**  
SRS Project Manager



**Anna Tamura**  
Regional Planning Portfolio  
Manager  
Subject Matter Expert



**Kelly Horvath**  
Outdoor Recreation Planner  
SRS Feasibility & Visitor Use



**Hanako Wakatsuki**  
Chief of Interpretation and  
Education, Minidoka  
Subject Matter Expert



**Westby Mize**  
Historian  
SRS Significance & Suitability



**Kara Miyagishima**  
Japanese American  
Confinement Sites Grant  
Program Manager  
Subject Matter Expert



**Andrew White**  
Visitor Use Management  
Specialist  
SRS Feasibility & Visitor Use



**Phyllis Pineda Bovin**

Interdisciplinary Resource  
Management Specialist  
SRS Natural Resources



**Cherri Espersen**

Program Analyst  
SRS Washington Representative



**Becky Rinas**

Outdoor Recreation Planner  
SRS Region Representative



**Cynthia Romero-Nelson**

Branch Chief  
SRS Facilitator and Note-taker



**Nakyshia Fralin**

Internship, Huston-Tillotson  
University  
SRS Notetaker

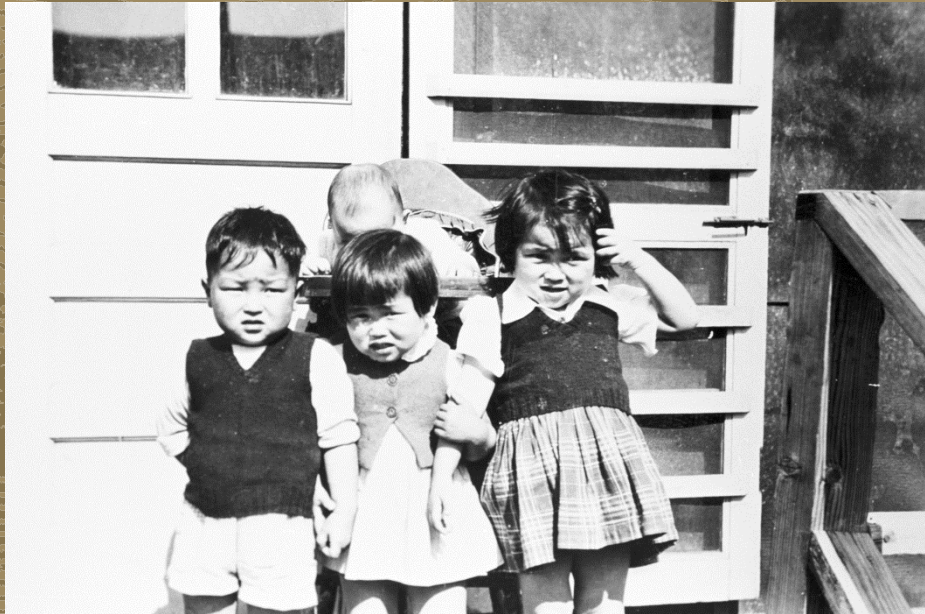


**Alisa Lynch**

Chief of Interpretation,  
Manzanar  
Subject Matter Expert

# Addressing Terminology

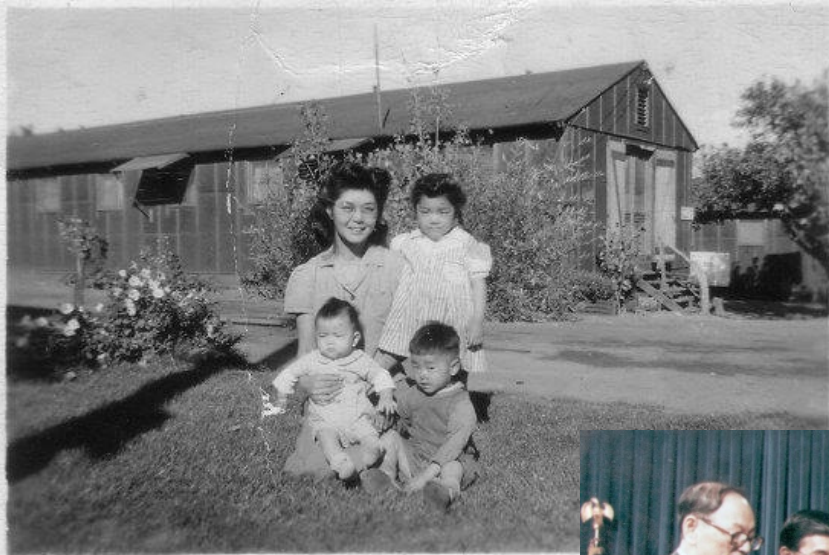
- Incarceration vs. Internment
- Forced Removal vs. Evacuation



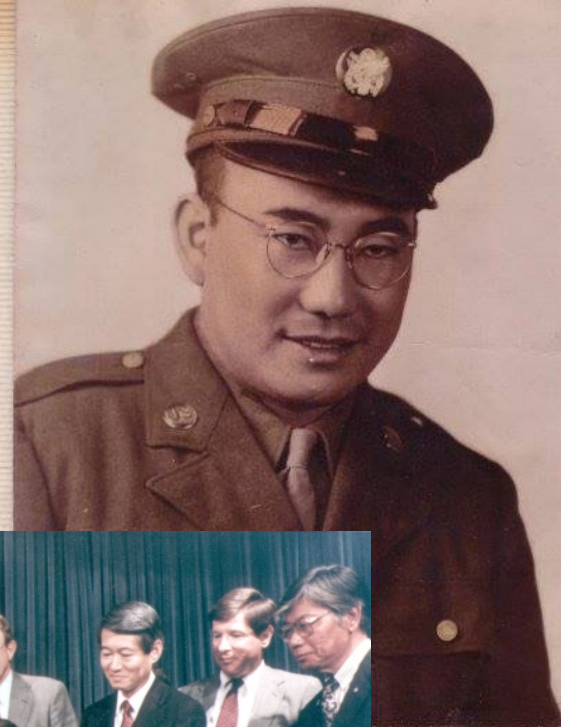
*Courtesy of the National Archives and Records Administration*



# Our Collective History



*Courtesy of Hanako Wakatsuki  
and Densho, the Kinoshita Collection*



*"This is not just a Japanese American story, but an American story with implications for the world."  
- Frank Kitamoto*

# Background of Amache

## Sites Associated with Japanese Americans During World War II





# Amache Statistics

- Incarcerees were from California
- In operation for 3 years

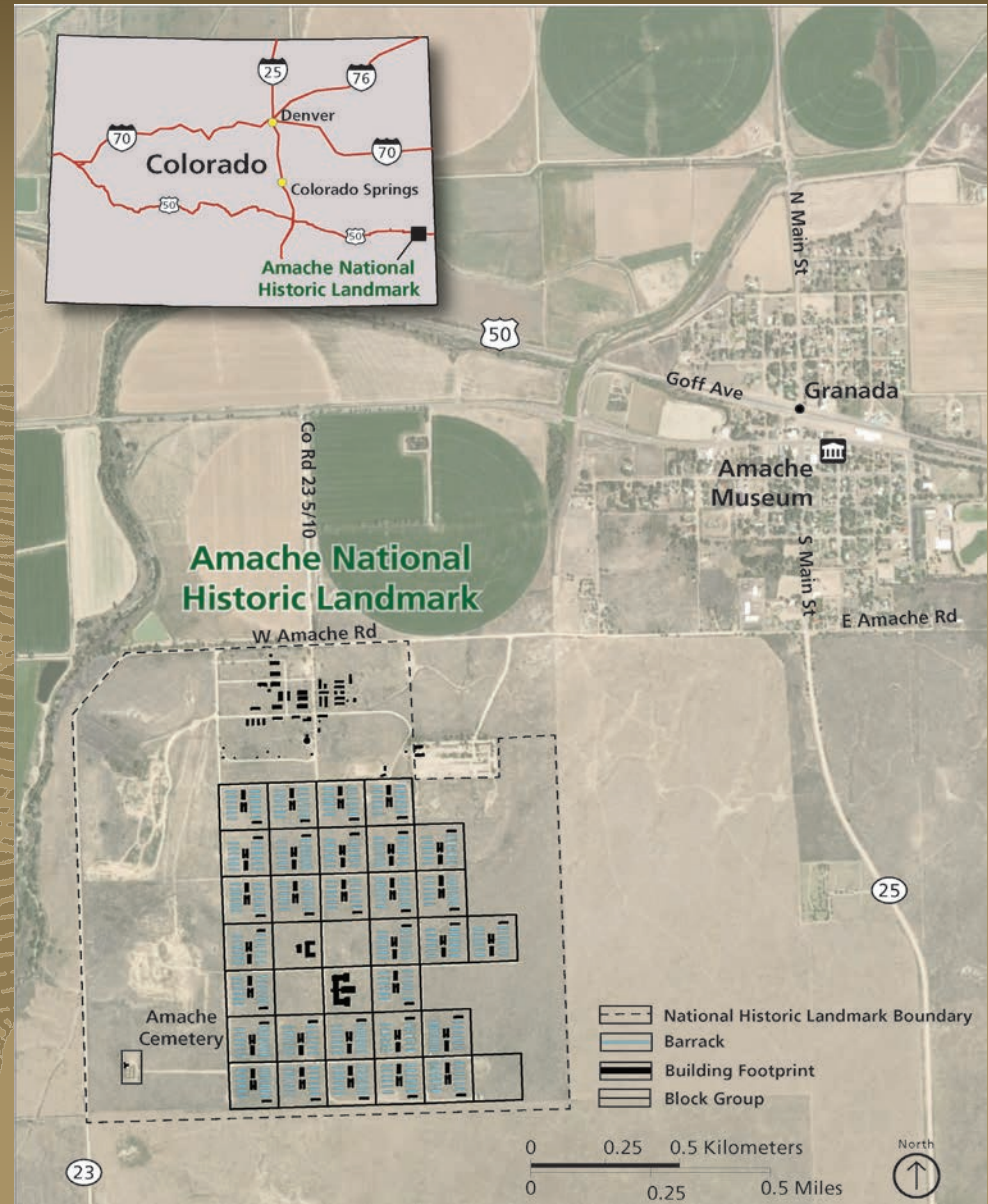


- 10,000 acres
- 10,000 people went through Amache
- Peak population: 7,318 people
  - Colorado's 10<sup>th</sup> largest city





# Overview and Layout



# Living Conditions and Agriculture





# Closing of the camps



*Courtesy of the Museum of  
History and Industry &  
National Archives and Records  
Administration*



# Today at Amache



*Courtesy of the National Park Service*



# NPS Involvement with the WWII Japanese American Incarceration Sites

- Manzanar National Historic Site, CA – 1992
- Minidoka National Historic Site, ID – 2001
- Japanese American Confinement Sites (JACS) Grant Program – 2006
- Bainbridge Island Japanese American Exclusion Memorial, WA – 2008
- Tule Lake National Monument, CA – 2008
- Honouliuli National Historic Site, HI – 2015

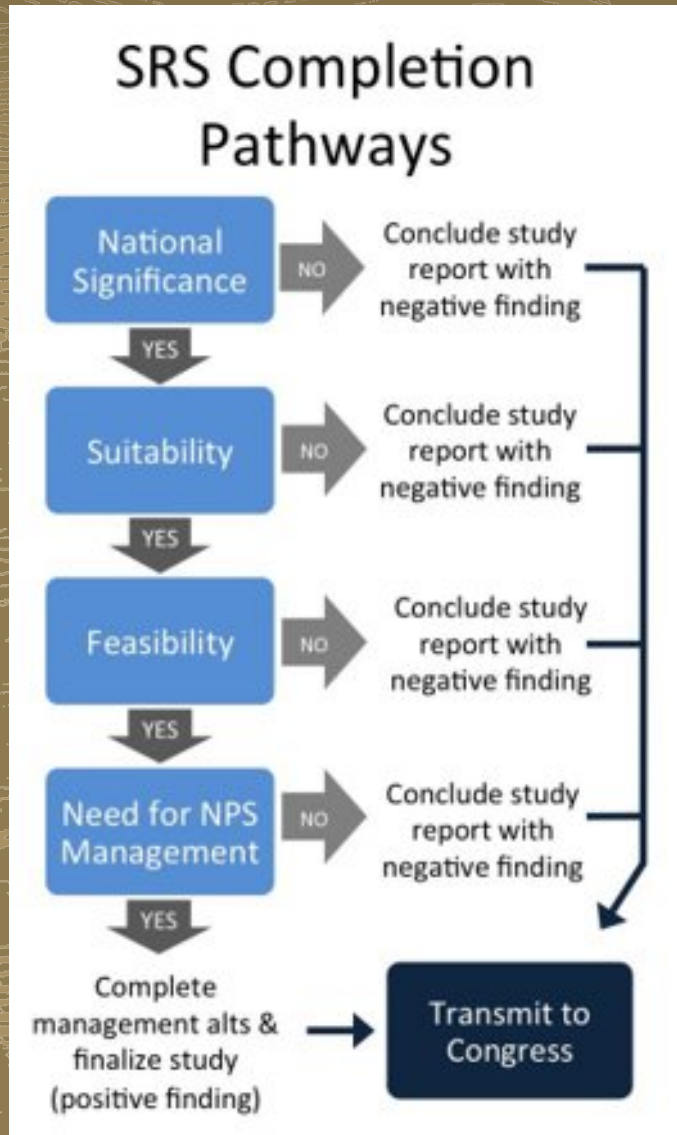


# John D. Dingell, Jr. Conservation, Management, and Recreation Act of 2019





# Special Resource Study (SRS) Process



- Linear process
- Negative finding for ANY criterion = conclude study
- National Environmental Policy Act (NEPA) pathway - Categorical Exclusion

# Criterion 1- National Significance

- Amache is an exemplary site of national significance based on its designation as a National Historic Landmark.
  - Outstanding example of a WWII incarceration site
  - Unusually sympathetic reception from Colorado Governor Ralph L. Carr
  - Did not experience the same level of conflict and violence as in other incarceration sites





# Criterion 2- Suitability

- Focus on suitability of the resource type.
  - Is it unique?
  - Is it NOT already represented?
  - Is it NOT already protected by others?
- Comparative analysis of other similar protected sites



# Criterion 3- Feasibility

- Is the site of sufficient size and appropriate configuration to ensure sustainable resource protection and enjoyment; and to be capable of efficient administration by the NPS at a reasonable cost?





# Criterion 4- Need for NPS Management

- Is direct management by the NPS the "clearly superior" approach?

## Compare Management Options:

- Continued management
- Management by another entity
  - private or nonprofit
  - state or other federal
- NPS management:
  - affiliated area
  - new park unit



# Other Things to Consider:

- Study findings are approved by the National Park Service
- Sites can become a unit of the National Park System without a SRS
- Park units are created through acts of Congress OR Presidential Proclamations
- About 1 in 4 studies result in a recommendation for inclusion in NPS



# How to Participate

Public comment and engagement period is open from February to September 15, 2020

- Participate in a meeting
- Submit a comment online (PEPC)

<http://parkplanning.nps.gov/amache>

- Send a written comment

Attn: Tamara Delaplane  
National Park Service  
12795 West Alameda Parkway  
PO Box 25287  
Denver, CO 80225-0287

- Email: [tamara\\_delaplane@nps.gov](mailto:tamara_delaplane@nps.gov)

# Questions on the SRS Process



National Park Service  
U.S. Department of the Interior

Amache Special Resource Study

<http://parkplanning.nps.gov/amache>

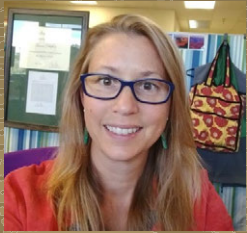




# Breakout Sessions

- Discussions in smaller groups:
  - opportunity to share YOUR thoughts and ideas
- Notes will be summarized and displayed on screen for you to see
  - documentation of comments for the public record
- Logistics of moving into breakout session

# Thank you!



Tamara Delaplane  
SRS Project Manager



Cherri Esperson  
SRS Washington  
Representative



Wes Mize  
SRS Significance & Suitability



Phyllis  
Pineda Bovin  
SRS Natural Resources



# Thank you!



Cynthia Romero-  
Nelson  
SRS Facilitator



Alisa Lynch  
Subject Matter Expert