



Welcome

Public Meeting #2

Claude Moore farm area at Turkey Run Park Concept Plan

Thank you for coming to review an initial range of concepts for the future of the Claude Moore farm area of the George Washington Memorial Parkway. We look forward to hearing your feedback.

6-6:30pm

Open House/Discussion at Boards

6:30-7:30pm

Presentation/Q&A

7:30-8pm

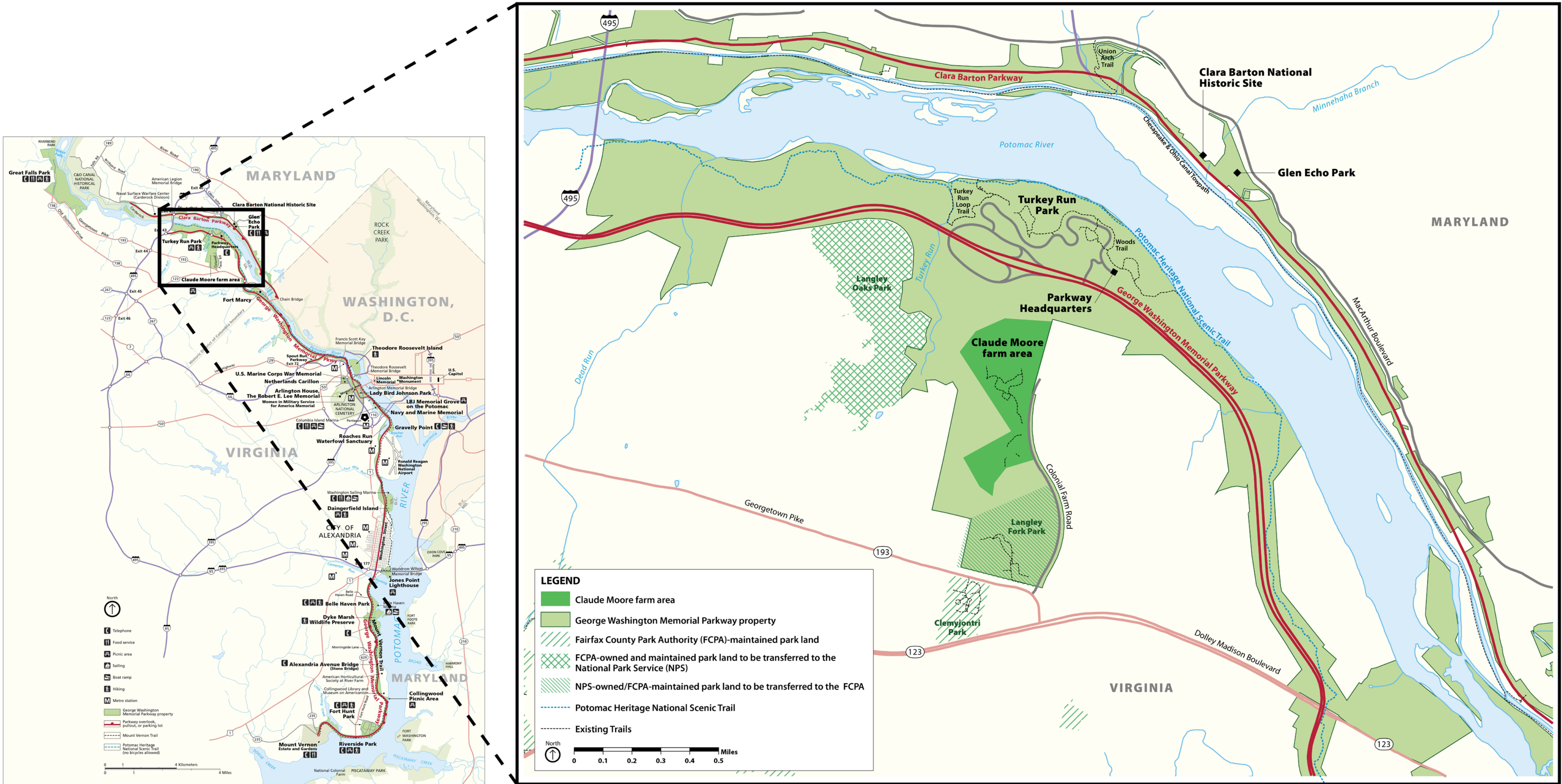
Open House/Discussion at Boards

Claude Moore farm area at Turkey Run Park Concept Plan

Plan Goals

The goals of this Concept Plan are to:

- Conduct community outreach and provide opportunities for the public to re-imagine the park
- Explore and identify potential adaptive reuse of existing facilities
- Develop a range of concepts for the park as part of the George Washington Memorial Parkway expanding opportunities for the public to explore the resources and engage in new visitor experiences



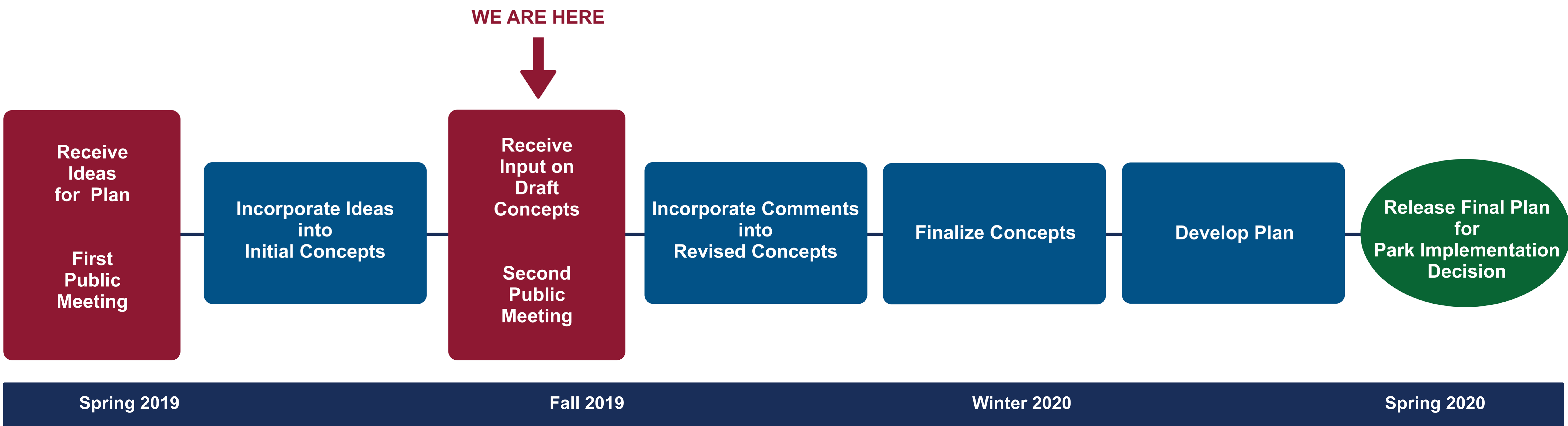
Existing conditions



Existing conditions

Claude Moore farm area at Turkey Run Park Concept Plan

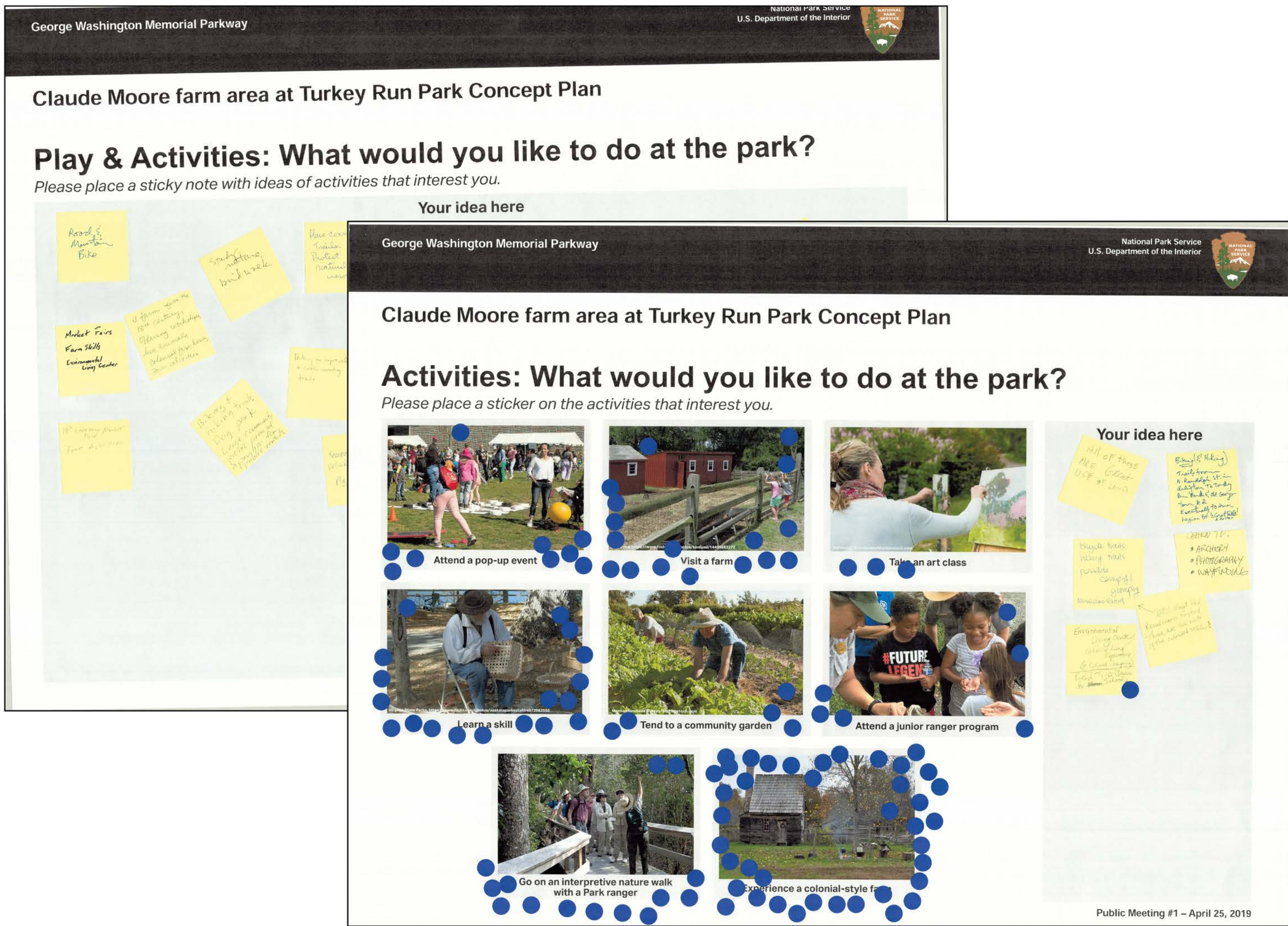
Project Timeline



Claude Moore farm area at Turkey Run Park Concept Plan

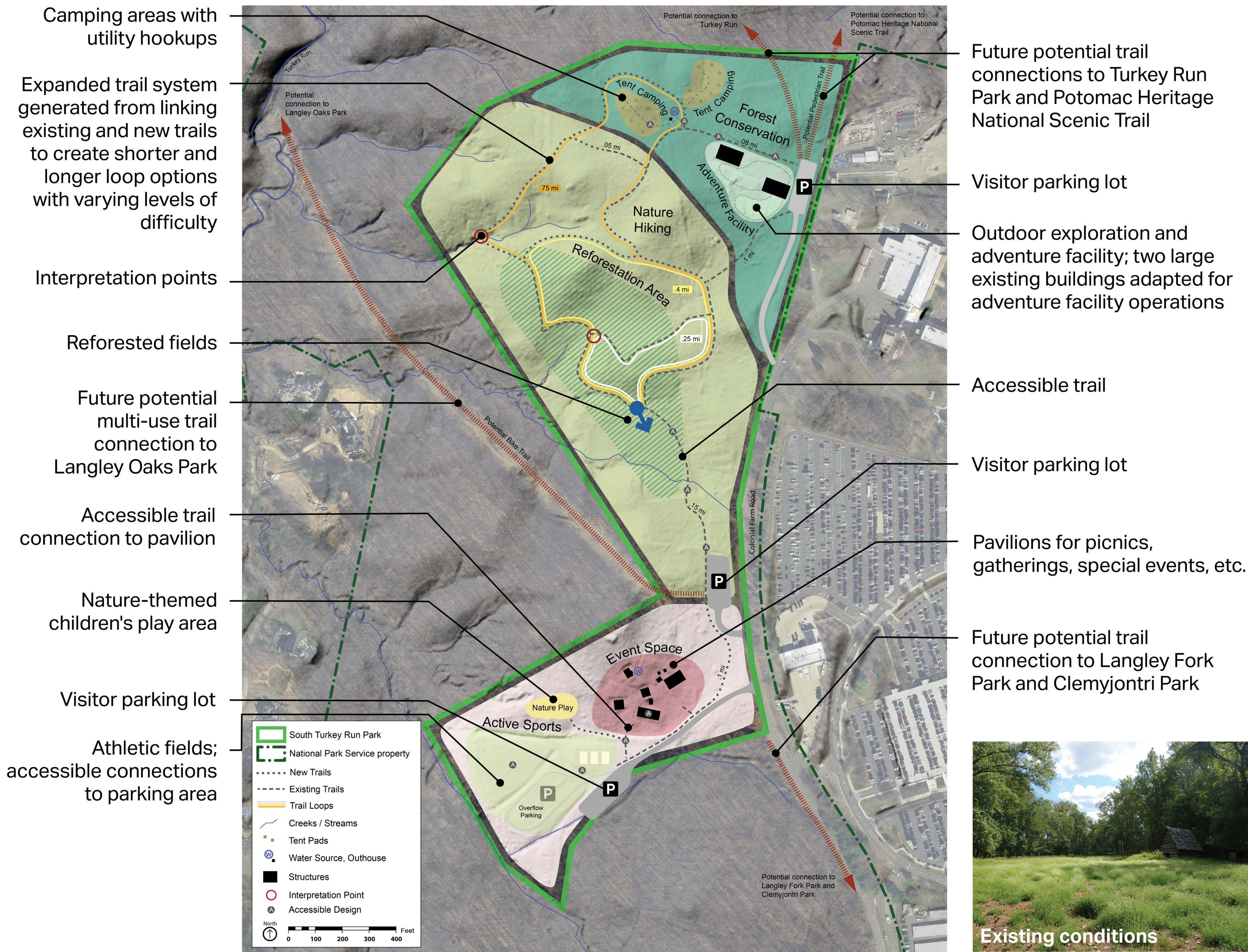
Public Comment Period #1 (April 25-May 25, 2019) Summary

- 52 attendees signed in at the public meeting; 90 pieces of correspondence were received during the public comment period
- Comments were received from former park visitors, volunteers, and staff and official representatives from several groups
- Commenters described:
 - Activities they enjoyed or participated in during previous park visits
 - Activities and features they do not want at the park in the future
 - What they would like to see at the park in the future, including:
 - Visit a colonial, living history, or working farm
 - Attend farm-related activities, programs, or events
 - Walk/hike/jog on trails
 - Learn a skill
 - View nature or wildlife
 - Go on an interpretive nature walk with a Park ranger
 - Have a picnic
 - Where they would like to see trail connections to, including:
 - Existing trails
 - Pavilion and baseball fields
 - Langley Fork Park
 - Langley Oaks Park
 - Turkey Run Park
 - Turkey Run
 - Dead Run
 - Potomac Heritage National Scenic Trail



Adventure + Exploration

The Adventure + Exploration Concept includes multiple improvements and would adaptively reuse the administrative and event pavilion areas.



The Adventure + Exploration Concept broadens recreation opportunities in the park by expanding possibilities to experience the wooded environment and engage in active recreation.

- Hike expanded trail loops
- Experience adventure facility
- Camp with utility hookups
- Walk through reforested fields
- Attend events
- Play sports
- Play in nature-inspired area
- Connect to external trails



Active Sports



Nature Play



Trails



Interpretation Point

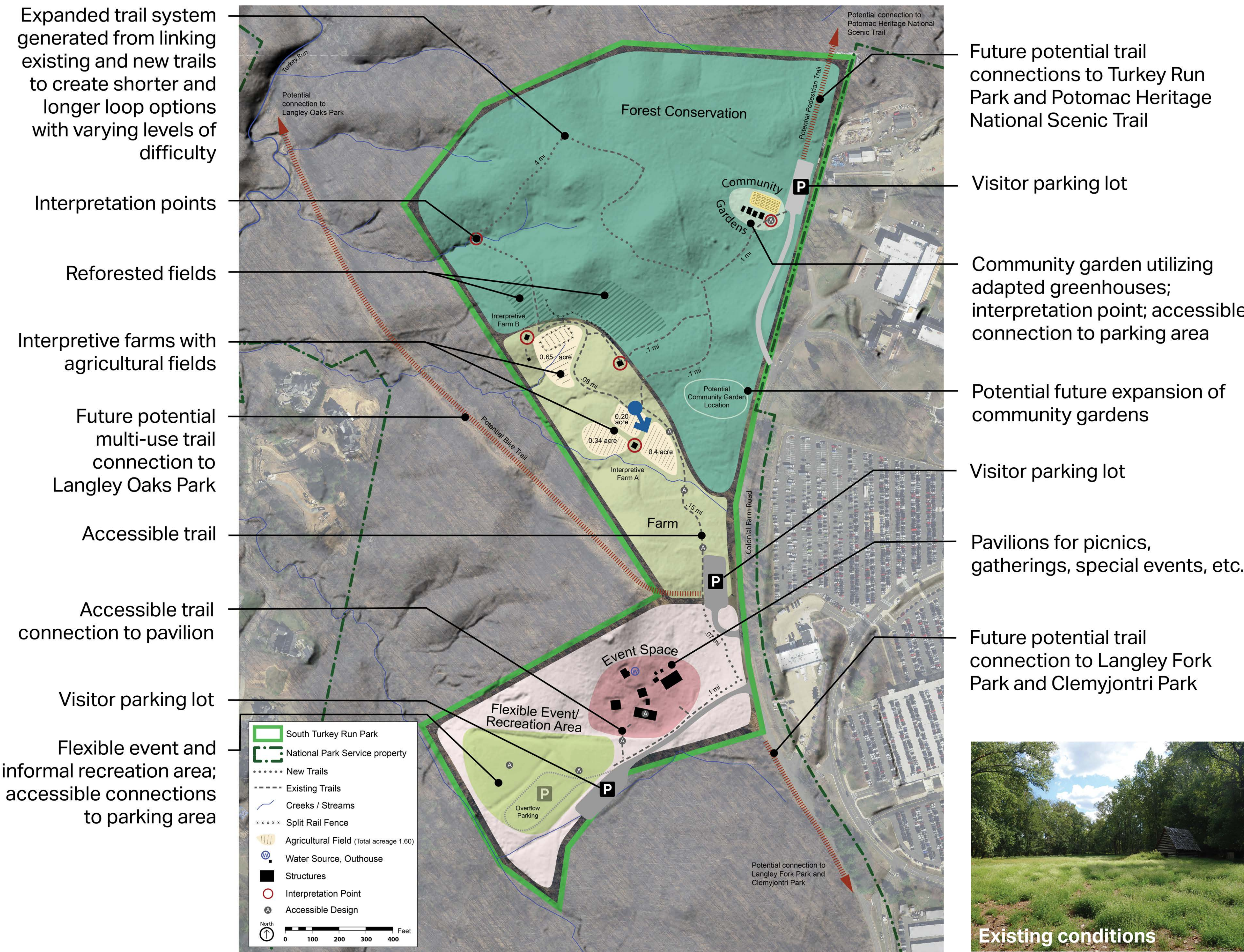


Tent Camping



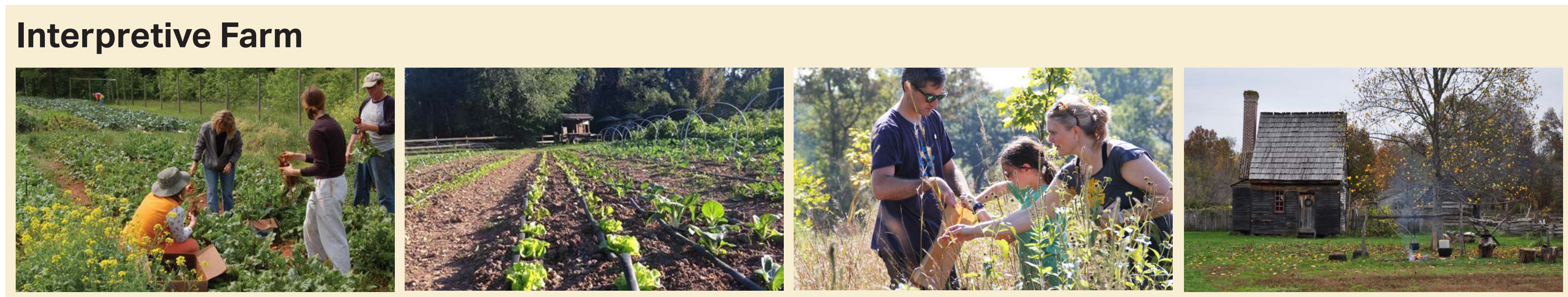
Cultivation + Connection

The Cultivation + Connection Concept would reuse the garden facilities, event pavilions, and interpretive structures at the site. Changes would expand recreation activities.



The Cultivation + Connection Concept offers participation in horticulture and education; these activities do not exclude an educational opportunity for a colonial farm experience.

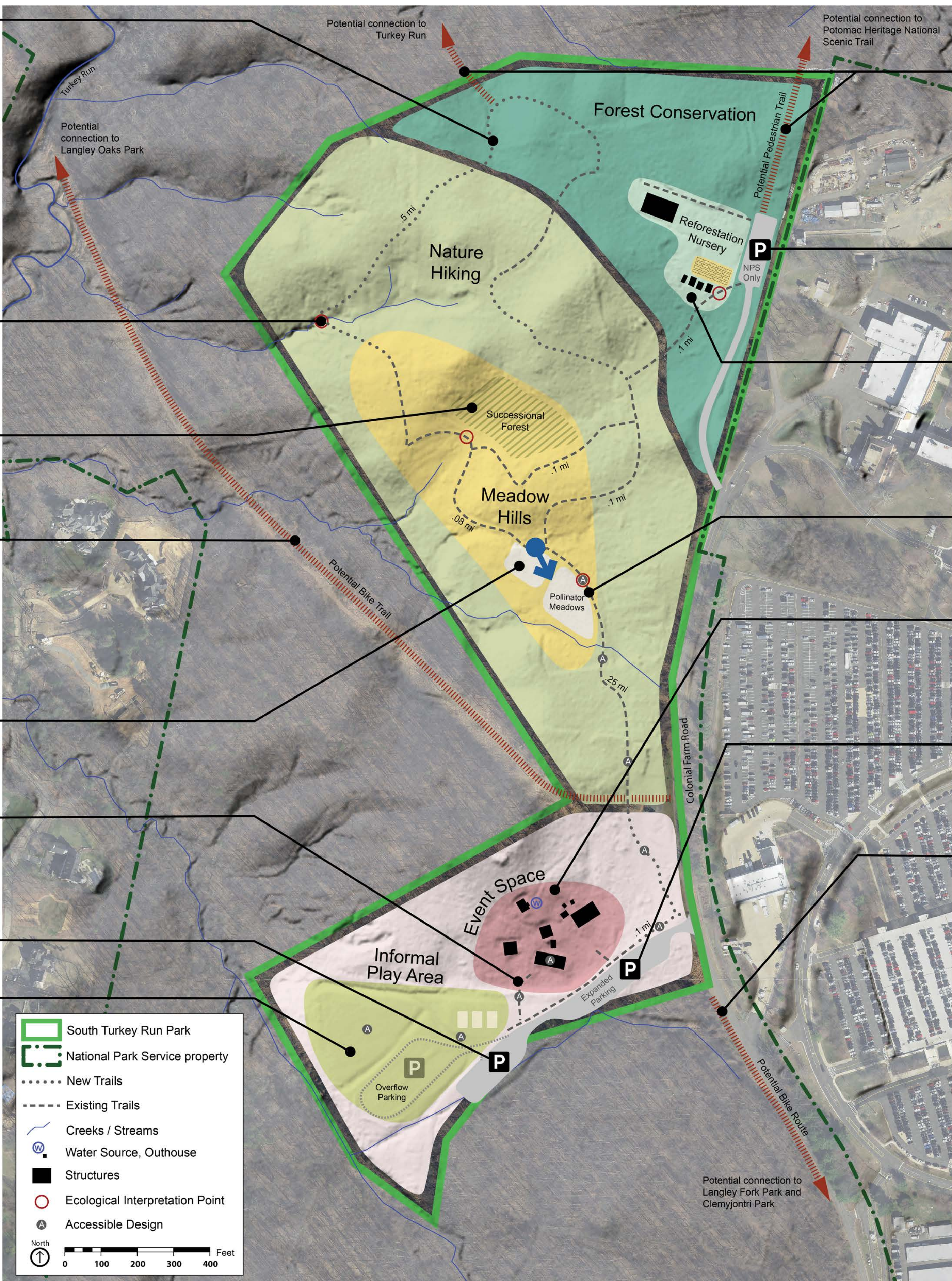
- Grow plants in a community garden plot
- Hike expanded trail loops
- Walk through reforested fields
- Learn at interpretive farms with agricultural fields
- Attend events
- Play sports
- Host an event
- Connect to external trails



Rejuvenation + Renewal

The Rejuvenation + Renewal Concept would adapt portions of the administrative and event pavilion areas, as well as establish the following improvements.

- Expanded trail system generated from linking existing and new trails to create shorter and longer loop options with varying levels of difficulty
- Ecological interpretation points
- Reforested fields
- Future potential multi-use trail connection to Langley Oaks Park
- Pollinator meadows
- Accessible trail connection to pavilion
- Visitor parking lot
- Informal play area; accessible connections to parking area



- Future potential trail connections to Turkey Run Park and Potomac Heritage National Scenic Trail
- NPS-only parking lot
- Reforestation nursery; existing building and greenhouses adapted for nursery use
- Accessible trail
- Pavilions for picnics, gatherings, special events, etc.
- New expanded visitor parking lot
- Future potential trail connection to Langley Fork Park and Clemjontri Park

The Rejuvenation + Renewal Concept enhances the range of natural settings that promote personal and ecological well-being.

- Hike loops with ecological interpretation points
- Experience multiple habitat types
- Reuse greenhouse as reforestation nursery
- Host or attend events
- Play in informal area
- Use expanded parking
- Connect to external trails



Informal Play Area



Pollinator Meadow



Ecological Interpretation Point



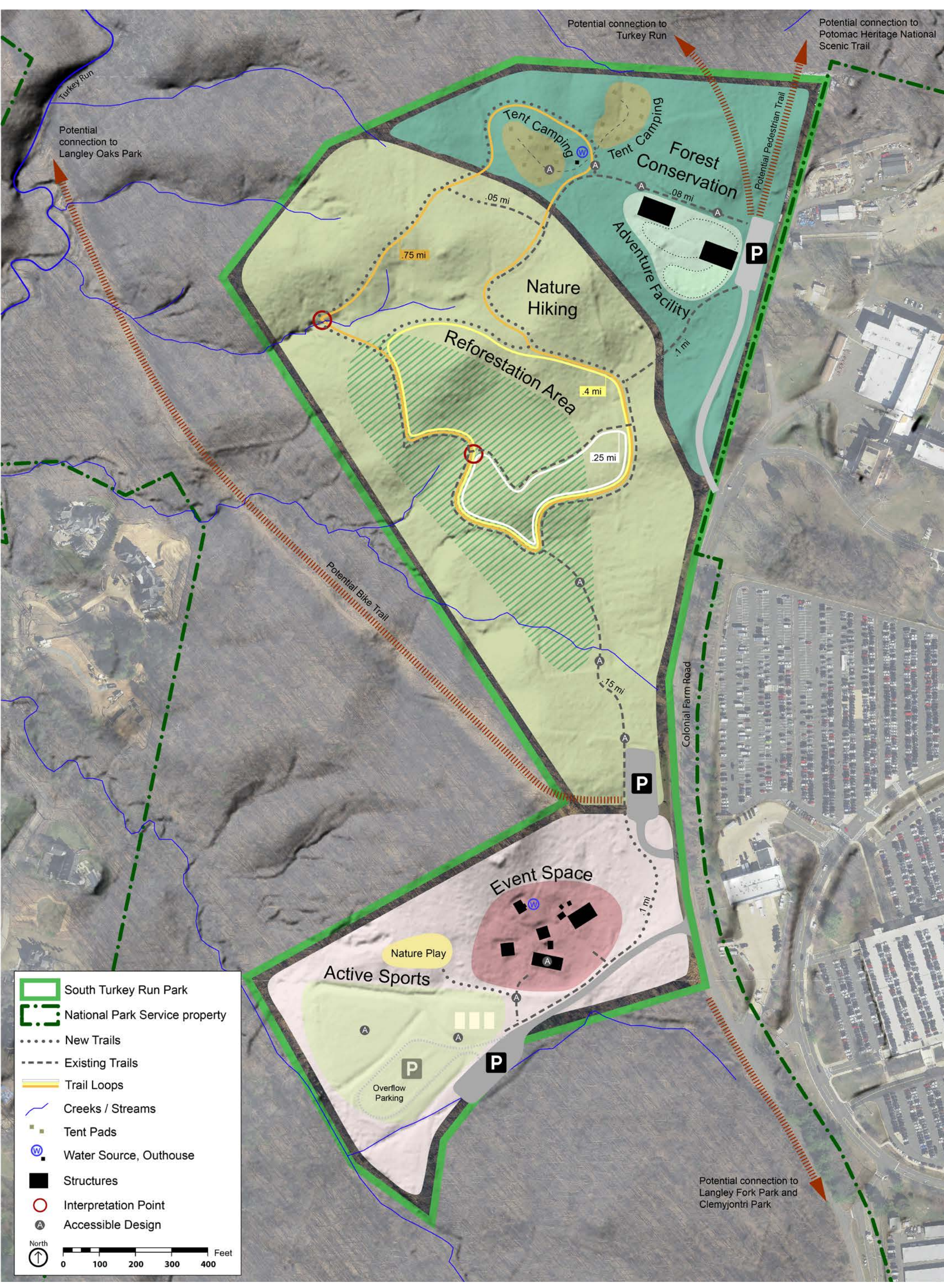
Hiking/Viewing Wildlife



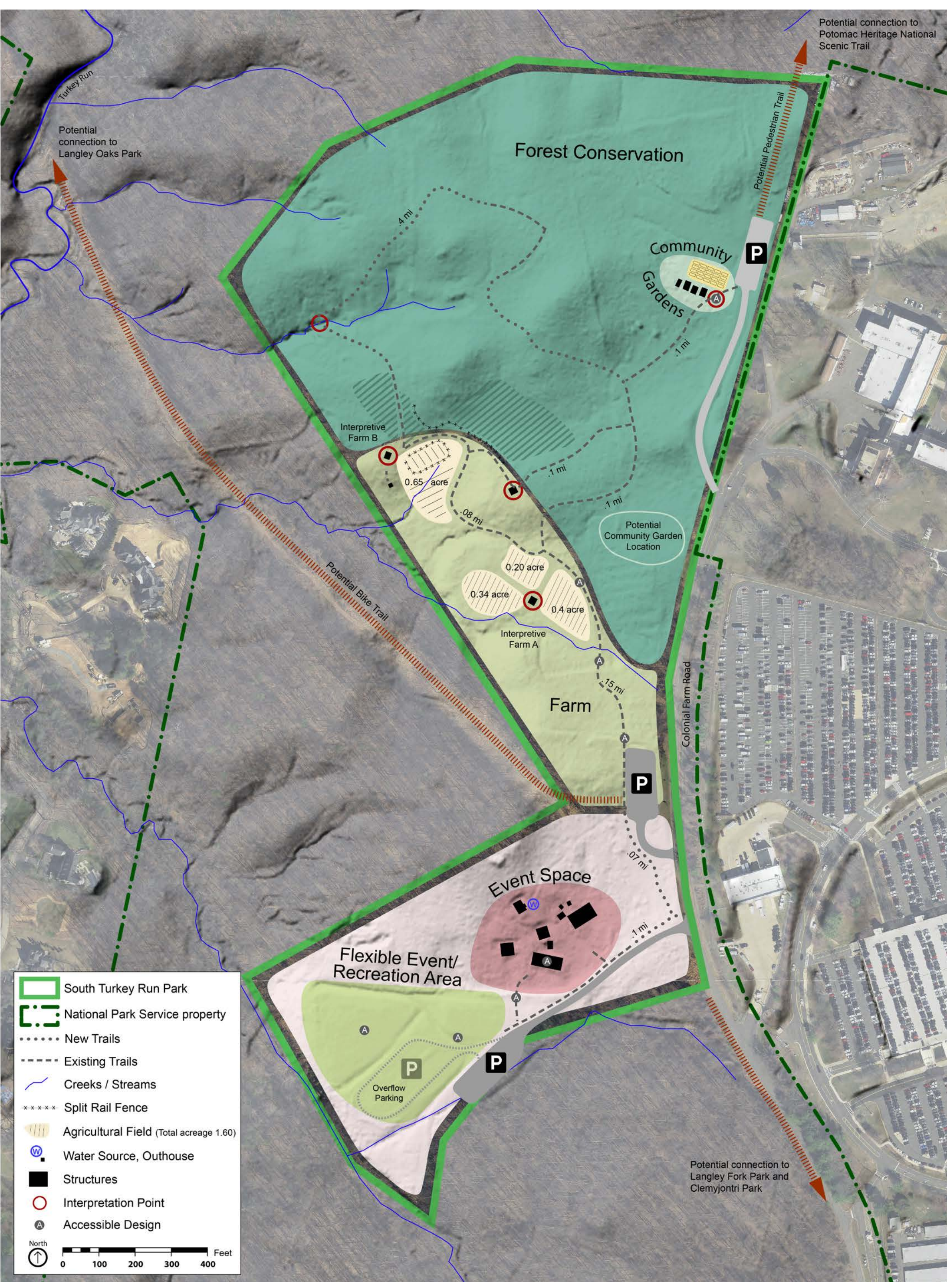
Reforestation Nursery



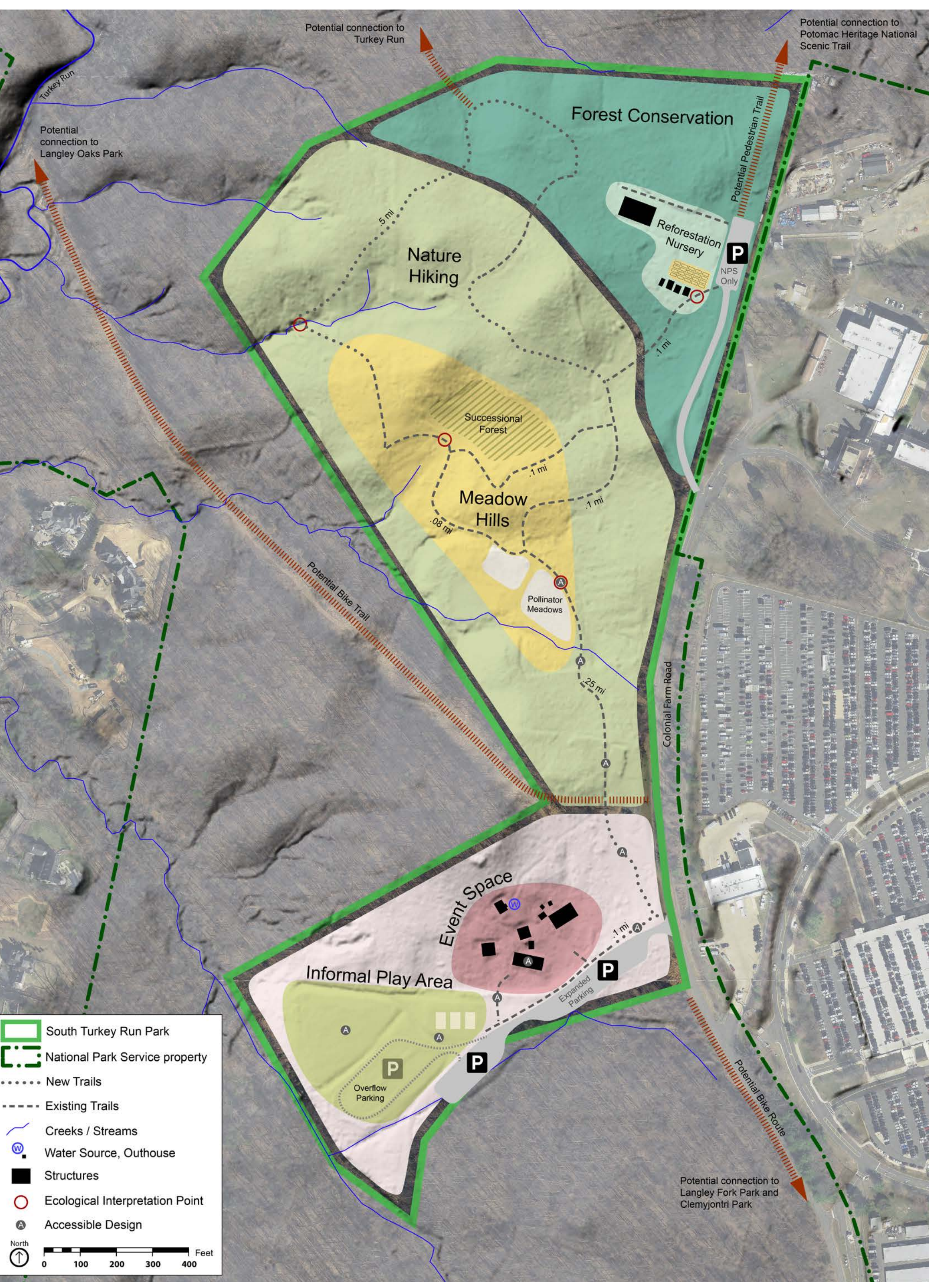
Adventure + Exploration



Cultivation + Connection



Rejuvenation + Renewal





Claude Moore farm area at Turkey Run Park Concept Plan

How Can You Submit Comments?

Please provide feedback on the concepts.

During this Meeting

- Fill out a comment form

After this Meeting

- **Online:** Submit a comment form online by **October 26, 2019** at http://parkplanning.nps.gov/STR_future
- **Written comments can be mailed to:**

George Washington Memorial Parkway
Attn: Superintendent
700 George Washington Memorial Parkway
c/o Turkey Run Park
McLean, VA 22101

- **Mailed comments** must be postmarked by **October 26, 2019** to receive consideration

For more information visit: go.nps.gov/ClaudeMooreFuture