

Fletcher's Boathouse Transportation Upgrades Environmental Assessment

Palisades Neighborhood Library - Public Scoping Meeting May 2, 2019



Welcome

Public Scoping Meeting

Fletcher's Boathouse Transportation Upgrades Environmental Assessment

- The purpose of the meeting is to present transportation upgrade alternatives and engage the public to identify issues, concerns, and ideas.
- The transportation upgrade alternatives will be further developed and refined with ideas that are collected during the public comment period. We want your input regarding the alternatives.

Fletcher’s Boathouse Transportation Upgrades Environmental Assessment

Palisades Neighborhood Library - Public Scoping Meeting May 2, 2019



Purpose

The purpose of the proposed project is to provide more direct and safer transportation connections between Canal Road and the Fletcher’s Boathouse, the C&O Canal towpath, and the Capital Crescent Trail.



Entrance ramp at Canal Road



Road approach from road culvert (tunnel) below the C&O Canal up to the upper parking lot



East approach to bridge over the C&O Canal



Entrance ramp approach up to Canal Road; Abner Cloud House

Fletcher's Boathouse Transportation Upgrades Environmental Assessment

Palisades Neighborhood Library - Public Scoping Meeting May 2, 2019



Need

The transportation upgrades are needed to address the following concerns and ongoing issues affecting the Fletcher's Boathouse area:

- The single-lane entrance ramp provides the only access between the area and Canal Road for entering and exiting traffic, which can result in unsafe traffic situations
- Safe access from Canal Road's eastbound/inbound traffic is nearly impossible due to the entrance ramp's configuration immediately adjacent and parallel to Canal Road
- The geometry and grade differential between the entrance ramp and Canal Road creates inadequate sight distances for entering and exiting traffic
- A one-lane road culvert (tunnel) with low clearance and poor sight distance provides the only vehicle access to the larger, lower parking lot west of the C&O Canal
- Large fire trucks, ambulances, and river rescue crews are severely challenged in gaining unfettered access to the area during an emergency
- Large equipment/trucks have very limited access to the area to perform repair and maintenance to park facilities and the DC Water Odor Abatement Facility
- Existing pedestrian access routes to the project area from outside the park are unsafe and cause pedestrian/vehicular conflicts
- Some portions of the area are not fully compliant with accessibility standards



Entrance ramp adjacent and parallel to Canal Road



East road approach to road culvert (tunnel) below the C&O Canal

Fletcher’s Boathouse Transportation Upgrades Environmental Assessment

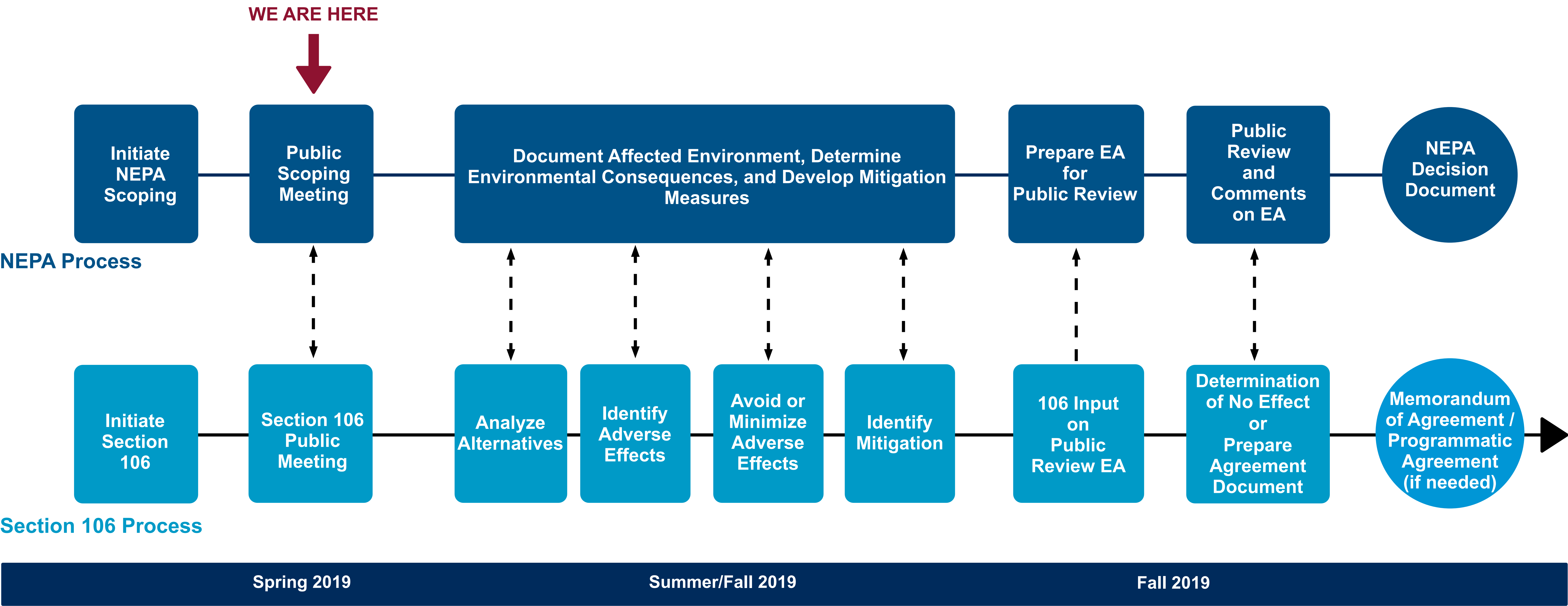
Palisades Neighborhood Library - Public Scoping Meeting May 2, 2019



NEPA + Section 106 Processes

In accordance with the National Environmental Policy Act (NEPA), the NPS is preparing an Environmental Assessment (EA) to identify alternatives and assess the potential impacts of the project.

Concurrent to the NEPA process, the NPS is also undertaking the Section 106 of the National Historic Preservation Act consultation process. The purpose of the Section 106 consultation process is to identify historic properties that could be affected by the project; assess adverse effects on those properties; and develop ways to resolve those effects through appropriate avoidance, minimization, and/or mitigation measures.



Fletcher's Boathouse Transportation Upgrades Environmental Assessment

Palisades Neighborhood Library - Public Scoping Meeting May 2, 2019



What Issues will the EA Address?

- The proposed project could change vehicle, pedestrian, and bicycle access to the Fletcher's Boathouse area from Canal Road
- The proposed project could change vehicle, pedestrian, and bicycle circulation within the Fletcher's Boathouse area
- The proposed project could alter stormwater runoff
- The proposed project could introduce or change elements of documented historic resources and cultural landscapes



Entrance ramp at Canal Road



Directional sign near east approach to bridge over the C&O Canal



Lower parking lot



Retaining wall along Canal Road (background), Abner Cloud House, and the C&O Canal

Fletcher's Boathouse Transportation Upgrades Environmental Assessment

Palisades Neighborhood Library - Public Scoping Meeting May 2, 2019



Existing Conditions

Fletcher's Boathouse (officially named Fletcher's Cove) is a renowned fishing and recreational area along the Chesapeake & Ohio (C&O) Canal and Potomac River.

The C&O Canal National Historical Park (CHOH) administers the project area.

Key existing features include:

- Single-lane entrance ramp provides vehicle, pedestrian, and bicycle access between Canal Road and the upper parking lot
- Road culvert (one-lane tunnel) with low clearance allows visitor use vehicle, pedestrian, and bicycle access between the upper and lower parking lots
- Canal bridge, stairs, and accessible ramp also provide pedestrian and bicycle access between the upper and lower parking lots, C&O Canal Towpath, and Capital Crescent Trail
- Official use vehicle (maintenance and emergency) access to the lower parking lot provided via the canal bridge, towpath, and an access ramp

LEGEND

- Project Area
- A

Abner Cloud House
- B

Boathouse
- C

Concessions
- DC Water

Restrooms/DC Water Odor Abatement Facility
- ➔

Building Access Point
- |||

Existing Entrance Ramp
- |||

Existing Bridge
- Existing Road Culvert (Tunnel)
- Existing Access/Circulation Routes
- |||||

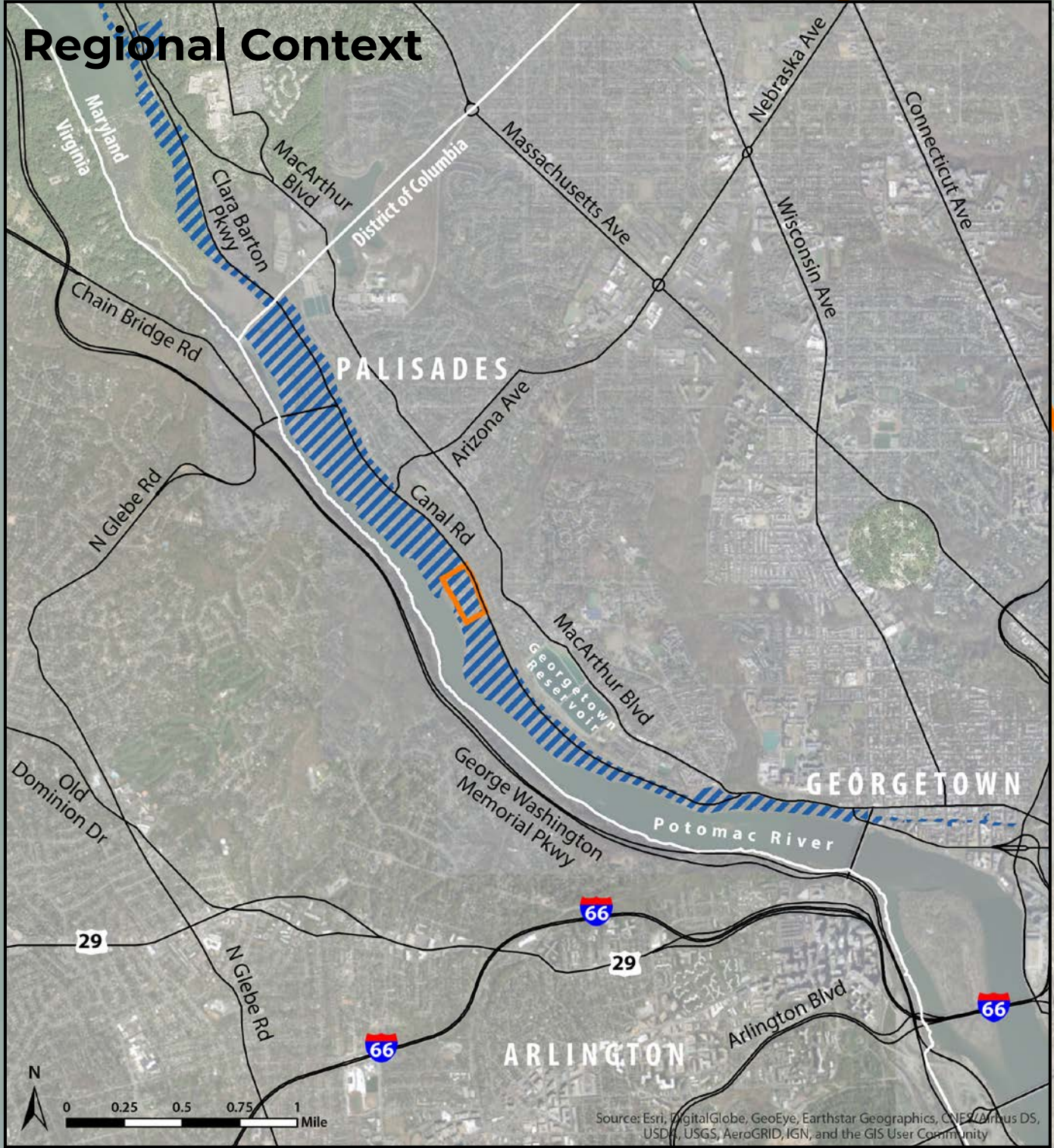
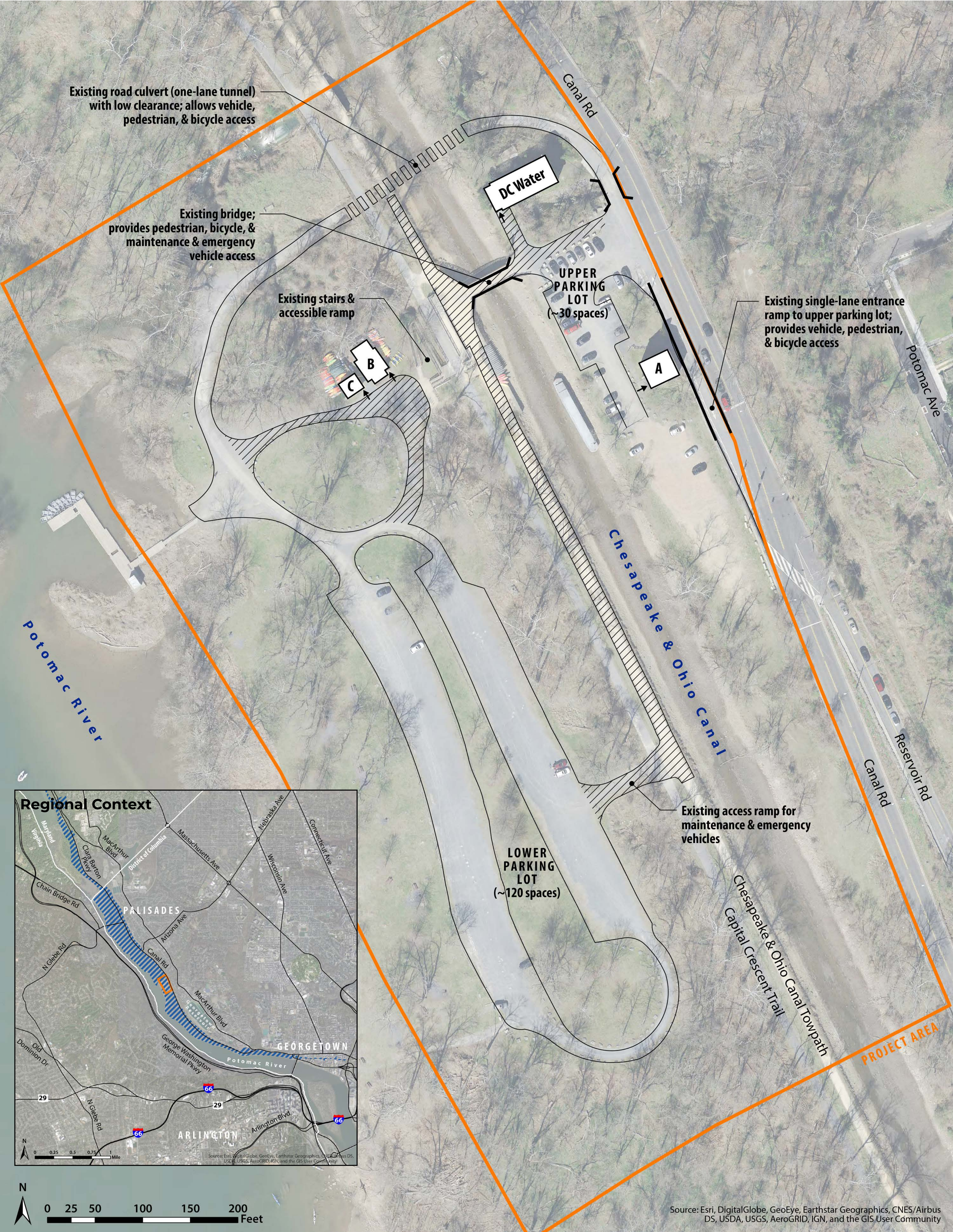
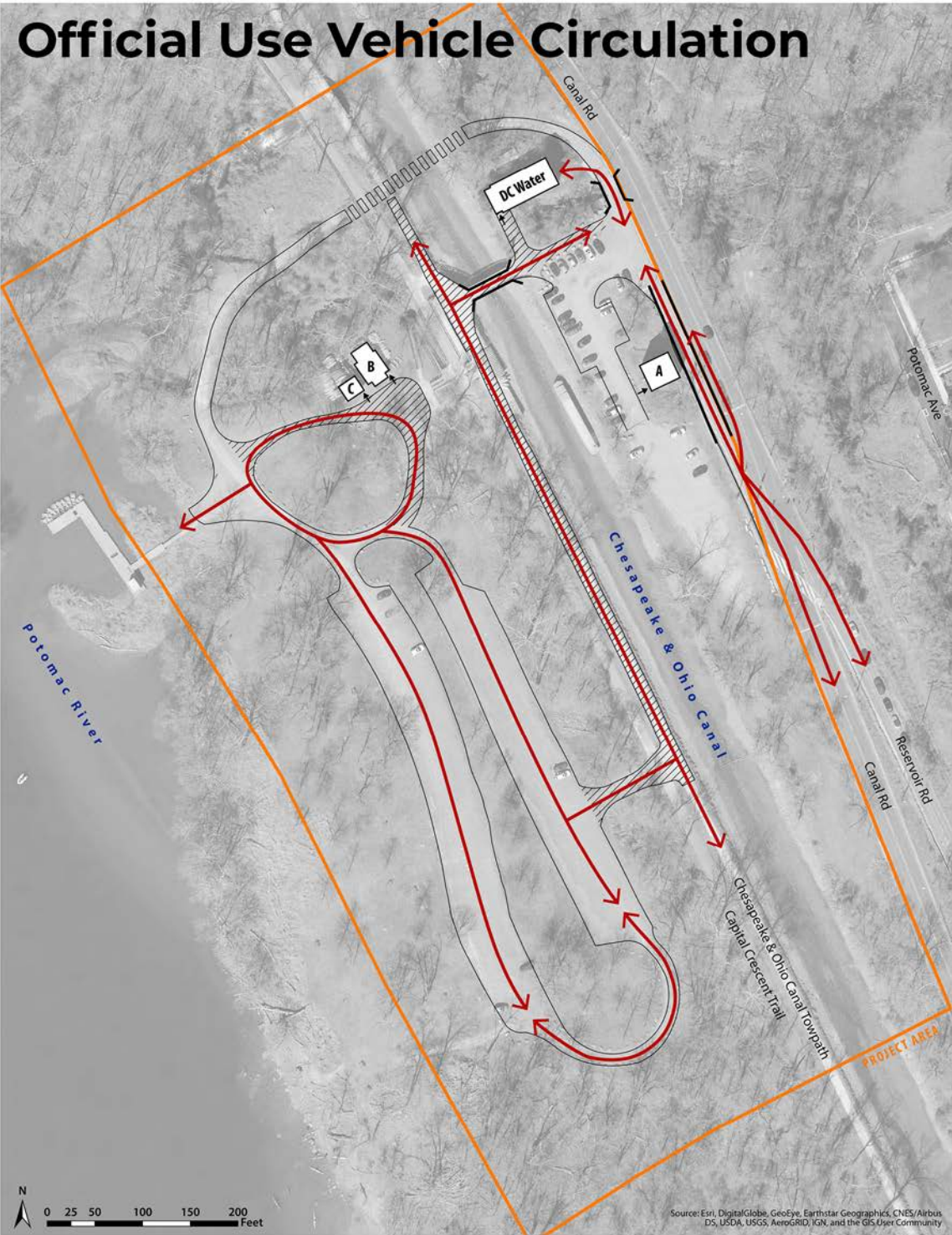
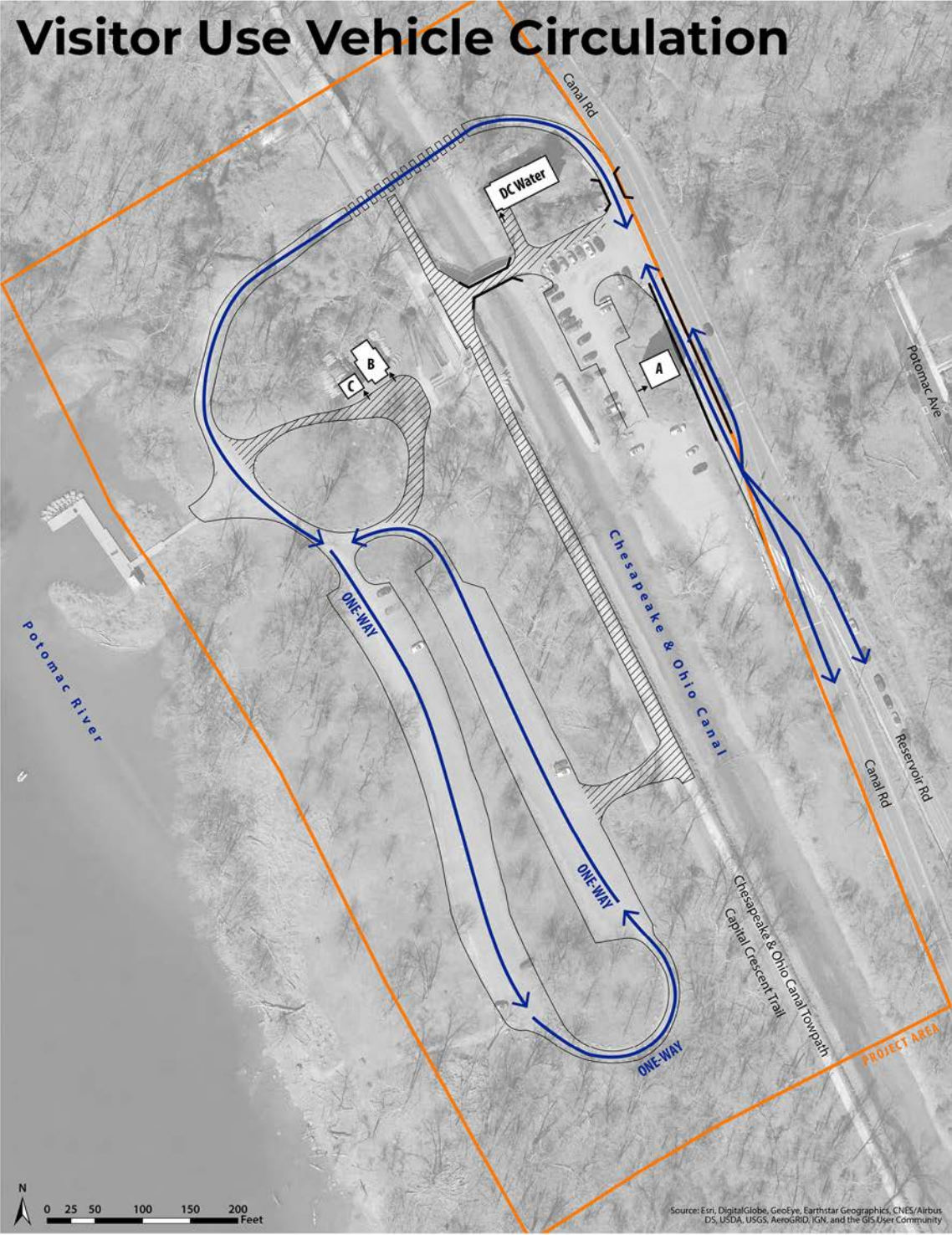
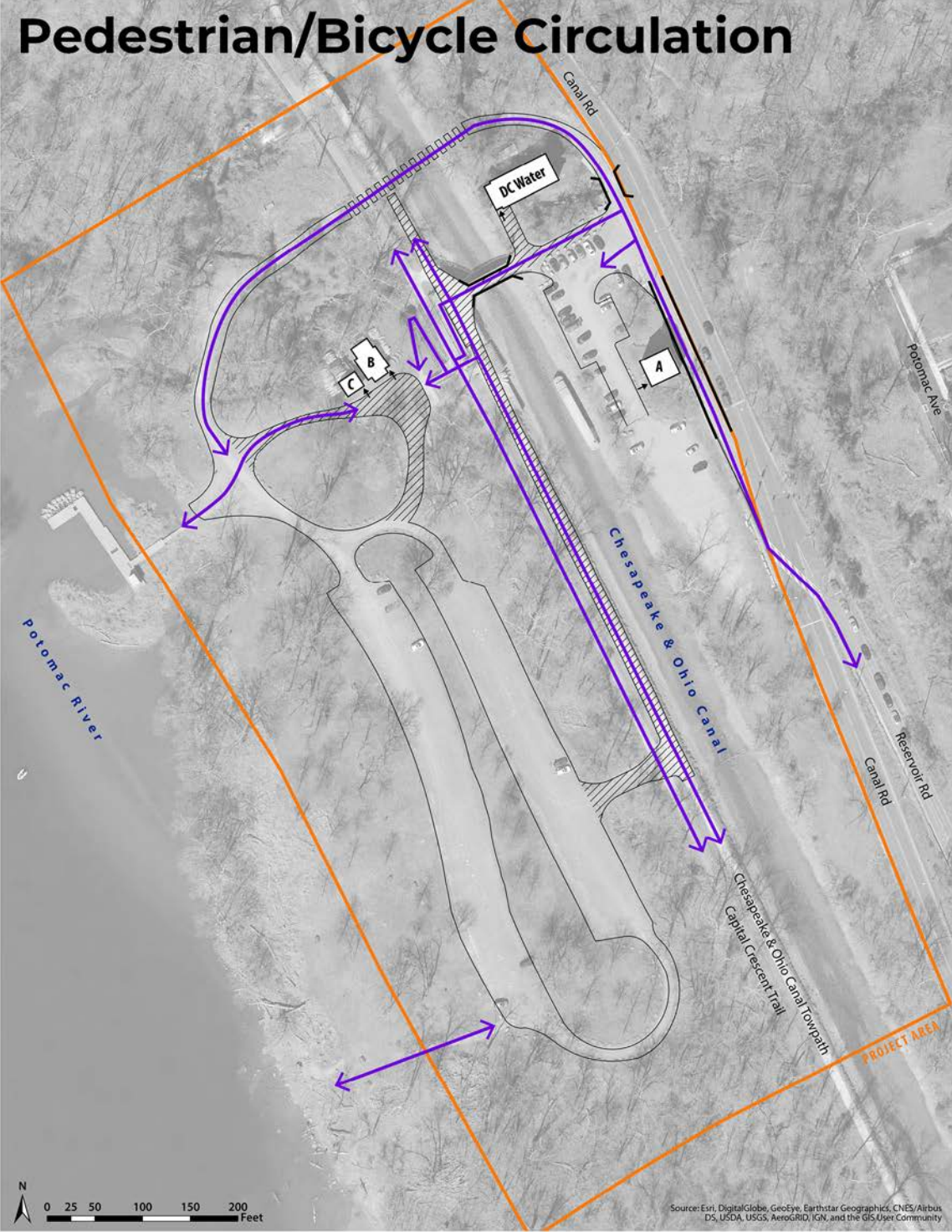
Official Use Vehicle Access Only; No Visitor Use Vehicle Access
- |||||

NPS Chesapeake & Ohio Canal National Historical Park
- ↔

Pedestrian/Bicycle Circulation
- ↔

Visitor Use Vehicle Circulation
- ↔

Official Use Vehicle Circulation



Fletcher's Boathouse Transportation Upgrades Environmental Assessment

Palisades Neighborhood Library - Public Scoping Meeting May 2, 2019



Existing Conditions



1 Bridge on road from road culvert (tunnel) to lower parking lot



2 Road culvert (tunnel) entrance from west approach (height clearance ~10 feet)



3 Concessions building (left); Fletcher's Boathouse (right)



4 Stairs and accessible ramp between the C&O Canal and lower parking lot



5 C&O Canal Towpath (left); Capital Crescent Trail (right)



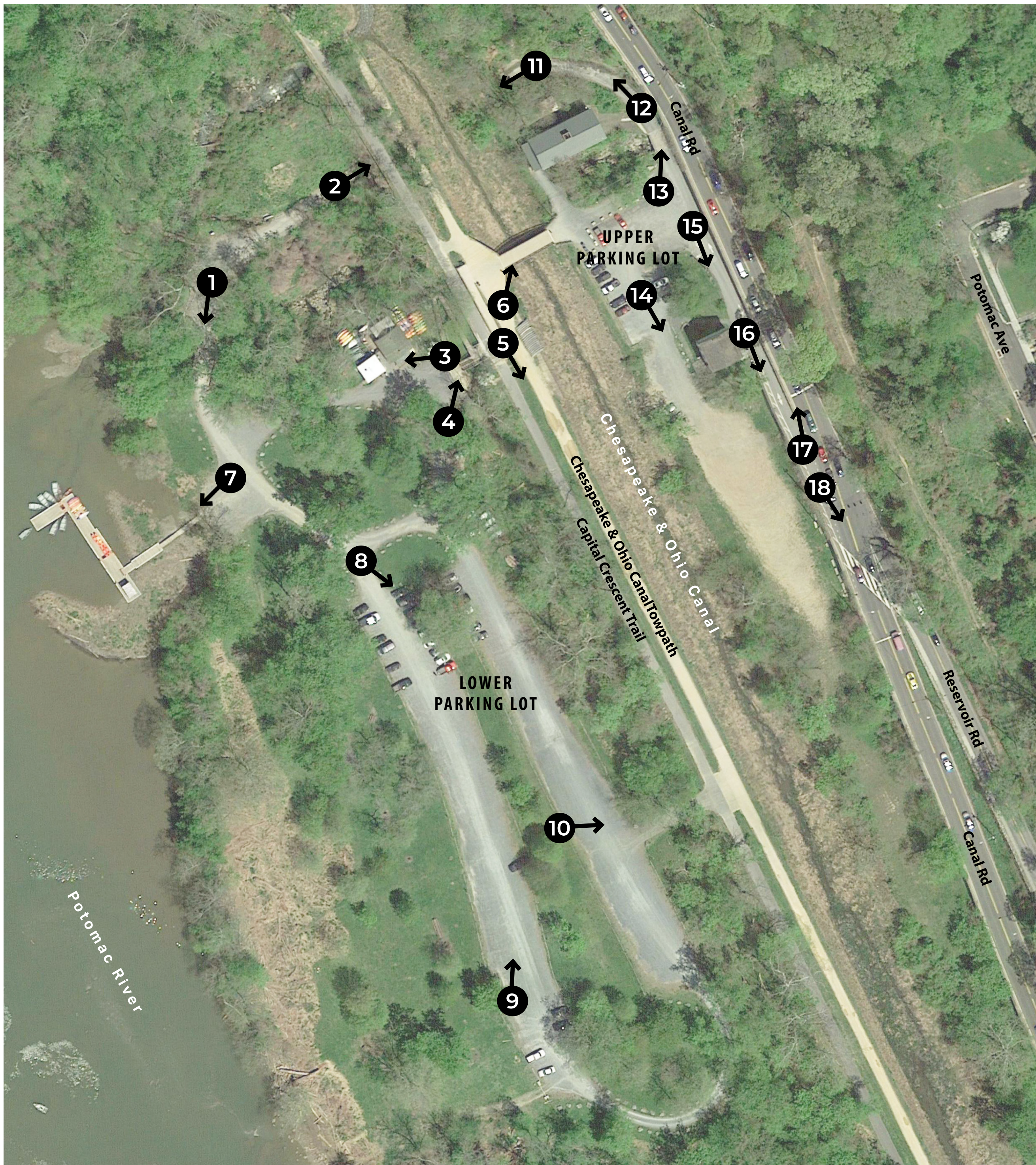
6 Bridge over the C&O Canal



7 Dock and boat launch on Potomac River



8 Lower parking lot



9 Lower parking lot



10 Access ramp between C&O Canal Towpath and lower parking lot



11 Road culvert (tunnel) entrance from east approach (height clearance ~7 feet)



12 Road approach to the road culvert (tunnel)



13 Culvert bridge



14 Abner Cloud House; upper parking lot



15 Entrance ramp approach up to Canal Road; Abner Cloud House



16 Entrance ramp approach up to Canal Road



17 Entrance ramp at Canal Road



18 Canal Road NW and Reservoir Rd NW intersection and pedestrian crosswalk