

**National Park Service
U.S. Department of the Interior**



Olympic Hot Springs Road

**Olympic National Park
Public Meeting
December 13, 2018**

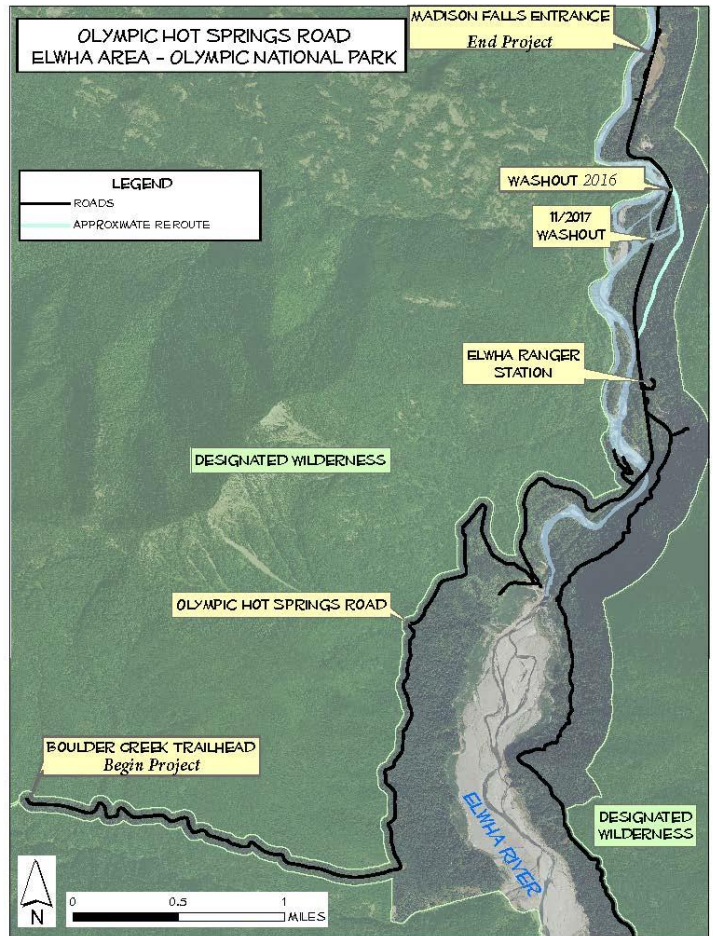
Welcome

- Why are we here?
- What has been done to date?

Overall Project Description

8.5 miles total:

- 1 Mile of Restored Access
- 7.5 Miles Rehabilitation

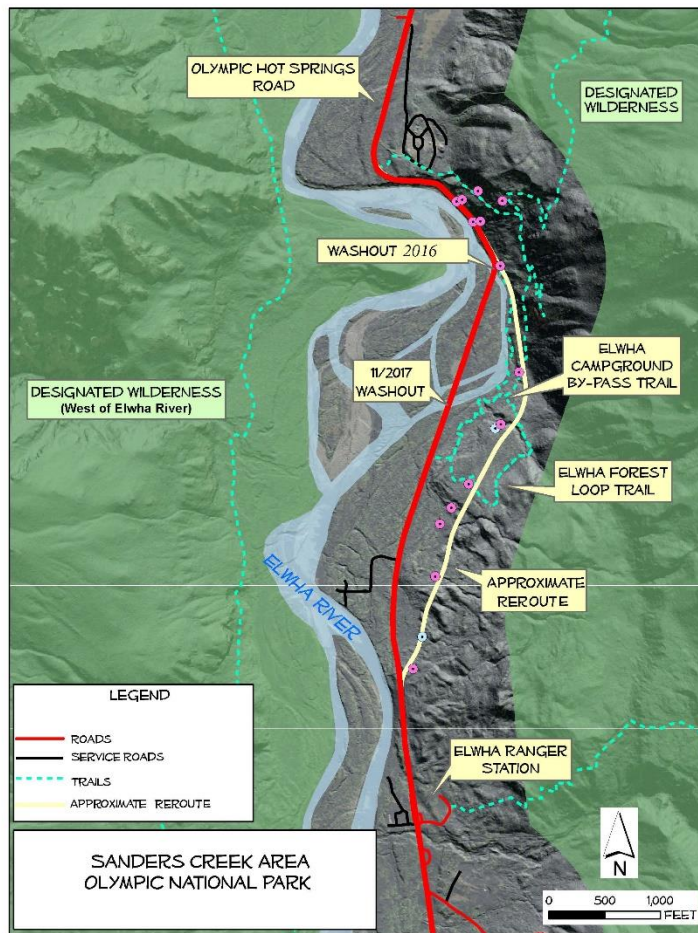


Washout

Description

Conceptual options

- No Build
- Reroute
- Raise the Road



Pre-NEPA Planning

- Feasibility – can it be done
 - Ancient or active landslides
 - Groundwater
 - Soil Types/settling embankments
 - Constructible



- Impacts
 - Forested Lands
 - Floodplain/Wetlands
 - Wildlife (ESA) Habitat
 - Cultural/Archeology
 - Restoration potential



- Engineering
 - Width
 - Feature (bridge/wall)
 - Design speed
 - Surrounding conditions
 - Maintenance

What's next?

Preliminary Design
Contract development

- Refine the conceptual alternatives
- Develop a biological assessment
- Develop NEPA document
- Specific impact analysis of each alternative
- Select preferred alternative
- Complete NEPA
- Permitting
- Construction

Simplified Tentative Timeline

Step	Timeframe
Completed Initial Phase of Geotech Investigation	Fall 2018
Release Draft EA	April/May 2019
Sign the decision document (“Finding of No Significant Impact”)	August 2019
Permits	Fall 2019 – August 2020
Advertise/Award Contract	Winter 2020
Begin construction work	Spring 2021



Photo by Dave Conca 11.28.17

Thank You Questions?

How to Comment:

Online: <https://parkplanning.nps.gov/OHSREA>

In person: Submit hardcopy comment form here, tonight.

Mail or hand-deliver to: Olympic National Park

Attn: Acting Superintendent Lee Taylor

600 E. Park Ave.

Port Angeles, WA 98362