

National Park Service Intermountain Region Long Range Transportation Plan Update



Stakeholder Webinar

Tuesday December 18, 2018

Join by phone Call-In Number: 1-877-985-6557

Participant Code: 6544267#

Presentation Overview

- ❑ **NPS LRTP Program Status**
- ❑ **Transportation in the National Park Service**
- ❑ **Overview of IMR**
- ❑ **IMR Planning Process**
- ❑ **IMR Transportation Key Issues**
- ❑ **LRTP Vision and Goals**
- ❑ **Common Interests**
- ❑ **Partner Participation**
- ❑ **How to Stay Informed**
- ❑ **Q&A**



Glacier National Park, Montana

Long Range Transportation Planning



Rocky Mountain National Park, Colorado

NPS LRTP Program Status

National

National LRTP – 2017

Regional

Alaska – 5-year Update

Intermountain – 5-year Update

Midwest – 2016

National Capital – 2018

Northeast – 5-year Update

Pacific West – 2015

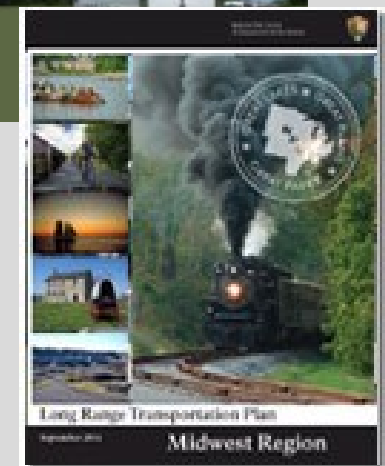
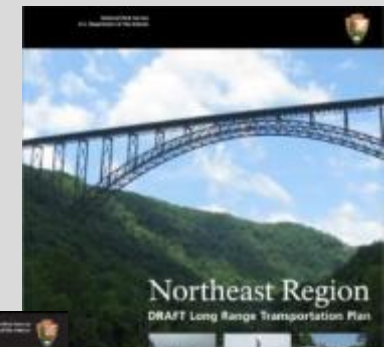
Southeast – 2016

Park Unit

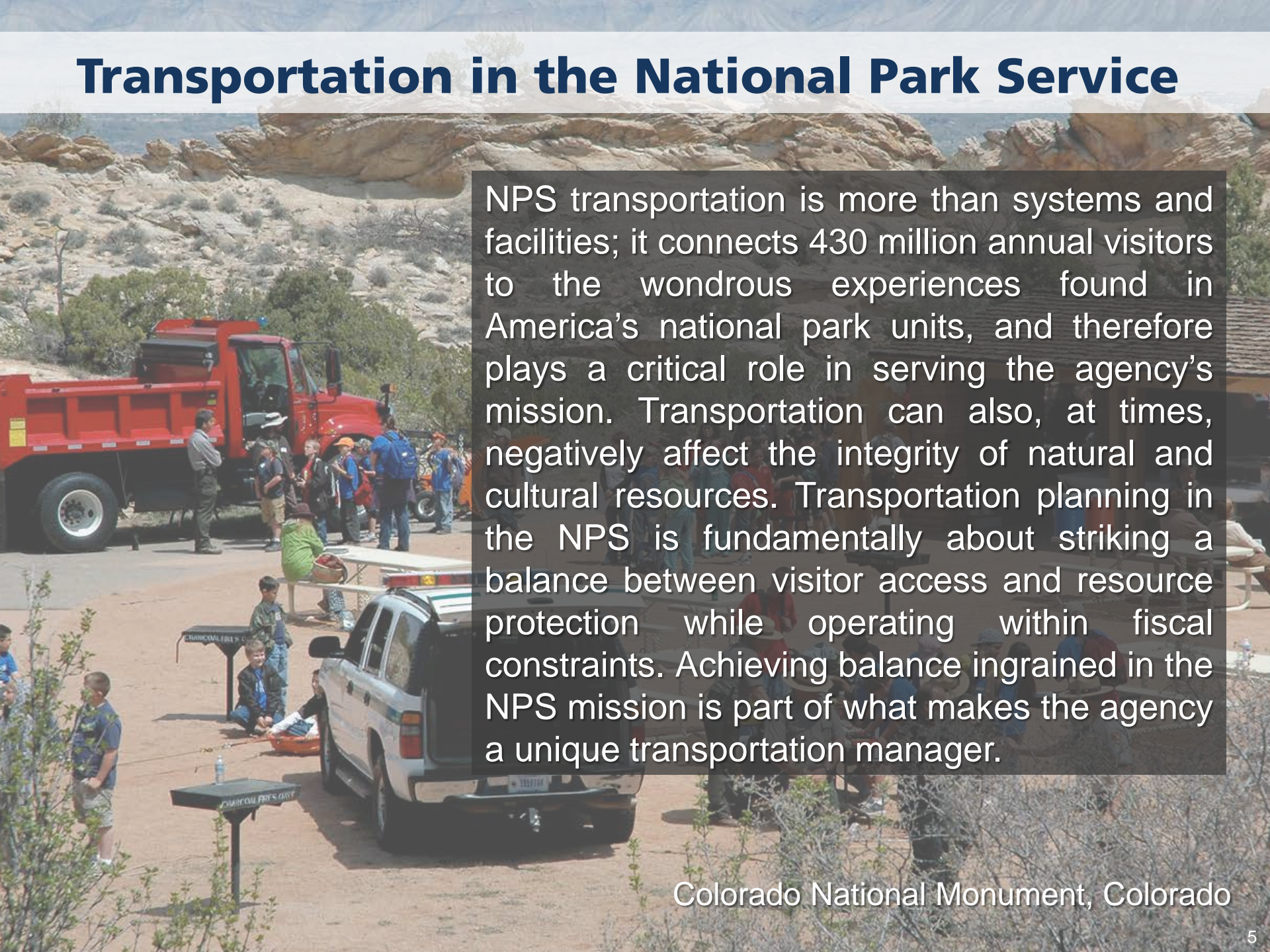
Golden Gate NRA

Acadia NP

Denali NP



Transportation in the National Park Service

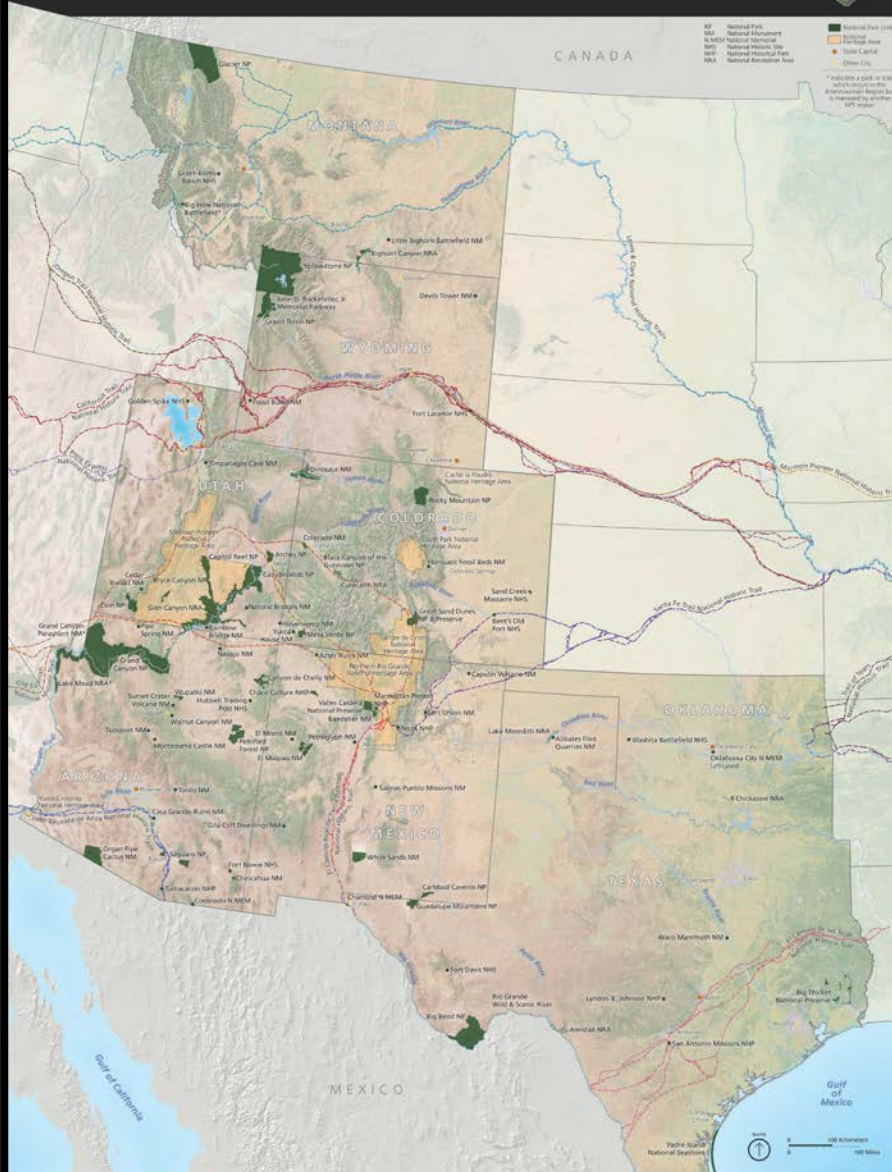
A photograph of a desert landscape at Colorado National Monument. In the foreground, a white NPS SUV is parked on a dirt road. To its left, a red NPS dump truck is parked. Several people, including children and adults, are gathered around the vehicles and picnic tables. The background features rugged, rocky desert hills under a clear sky.

NPS transportation is more than systems and facilities; it connects 430 million annual visitors to the wondrous experiences found in America's national park units, and therefore plays a critical role in serving the agency's mission. Transportation can also, at times, negatively affect the integrity of natural and cultural resources. Transportation planning in the NPS is fundamentally about striking a balance between visitor access and resource protection while operating within fiscal constraints. Achieving balance ingrained in the NPS mission is part of what makes the agency a unique transportation manager.

Colorado National Monument, Colorado

Intermountain Region

National Park Service
U.S. Department of the Interior




Intermountain Region
Geographic Resources Division

July 2018
Denver, Colorado

The region includes:

- ❑ 8 States
- ❑ 57.5 million recreation visitors in 2017
- ❑ 85+ Units
- ❑ 9 historic trails
- ❑ Roadways range from:
 - ❑ Going-to-the-Sun Road in Glacier National Park and
 - ❑ The Grand Loop Road in Yellowstone National Park
 - ❑ Park administration roads, with adjacent parking areas providing visitor and employee parking.

IMR Transportation System at a Glance



3,227 roadway lane miles
61,280 (37.4M SF) parking spaces
168 bridges
9 tunnels
8 multi-use trails
7 transit systems

Yellowstone National Park, Wyoming

Key Themes in IMR Transportation

- Visitor experience and managing visitor expectations
- Changing visitation patterns
- Congestion in some but not all units
- Safe travel systems
- Ecological connectivity
- Improved multimodal access
- Constrained funding
- Resiliency, climate change, and severe weather events
- Geohazards/erosion



Intermountain Region Long Range Transportation Planning Process

Grand Teton National Park

IMR LRTP Approach

- ❑ Guidance provided through two advisory committee workshops
- ❑ Data gathering and summary between workshops
- ❑ Workshop reports developed post-workshop
- ❑ Workshop outcomes shared via webinars for additional input
- ❑ Workshop reports rolled-up into draft LRTP update
- ❑ Communications strategy

Workshop #1: July/August 2018

- ❑ Identified the scope of issues to be researched and addressed in the IMR LRTP update
 - ❑ Issues are being researched using best available information in advance of workshop #2
- ❑ Refined vision and goals developed in 2014 IMR LRTP
 - ❑ Discussed consistency with 2017 national plan
- ❑ Discussed development of objectives, performance measures, and strategies
- ❑ Brainstormed park groupings that will be used to identify implications, trends, and needs on a more granular basis

Workshop #1 Outcomes – Draft Vision

National LRTP Vision (2017)	Workshop Outcome
<p>The National Park Service provides a mission-focused transportation system that is safe and seamless, enabling high-quality access to essential park unit experiences. The agency responsible plans and effectively manages the transportation system to accommodate changing environmental, social and financial conditions.</p>	<p>Manage site-appropriate access to America's Treasures while preserving the resources that enable high-quality experiences.</p>



Workshop #1 Outcomes – Draft Goal Statements

2017 National LRTP	Workshop Outcome
Goal Area: Asset Management	
Sustainably manage NPS transportation assets and services.	Manage transportation assets to maintain functional and sustainable systems.



Devil's Tower National Monument, Wyoming



Glen Canyon National Recreation Area, Utah

Workshop #1 Outcomes – Draft Goal Statements

2017 National LRTP	Workshop Outcome
Goal Area: Strategic Investments	
Allocate available transportation funding wisely.	Strategically invest while adapting to emerging issues.



Yellowstone National Park, MT, WY, ID

Workshop #1 Outcomes – Draft Goal Statements

2017 National LRTP	Workshop Outcome
Goal Area: Visitor Experience	
<p>Maintain and enhance the quality of visitor experiences.</p> <p>Provide a safe transportation system for all users.</p>	<p>Support transportation systems and services that facilitate visitors having safe, high-quality experiences throughout their visit.</p>



Zion National Park, Utah

Workshop #1 Outcomes – Draft Goal Statements

2017 National LRTP	Workshop Outcome
Goal Area: Resource Protection	
Protect and preserve natural and cultural resources.	Preserve site-specific fundamental resources and values throughout all aspects of the transportation life cycle.



Before

Saguaro National Park, Arizona



After

Workshop #1 Outcomes – Draft Goal Statements

2017 National LRTP	Workshop Outcome
Goal Area: Mobility, Access, and Connectivity	
NA	In collaboration with our partners, provide seamless, multimodal transportation and communication systems that facilitate access to park resources and experiences.



San Antonio Missions National Historical Park, Texas



Bryce Canyon National Park, Utah

- 
- ❑ Do you have suggestions about how parks could connect with communities?
 - ❑ What are some opportunities to improve connections between parks and communities?

Upcoming Workshop #2: Spring 2019

- Review data and information on issues identified during workshop
- Define performance targets
- Define and prioritize strategies based on feasibility
- Review and refine regional financial investment strategy



Post Workshops



- ❑ Stakeholder Webinars
Spring 2019
- ❑ Draft LRTP Update
Review
Late Summer 2019
- ❑ Stakeholder Engagement
Late Summer 2019
- ❑ Final LRTP Update
Complete
December 2019

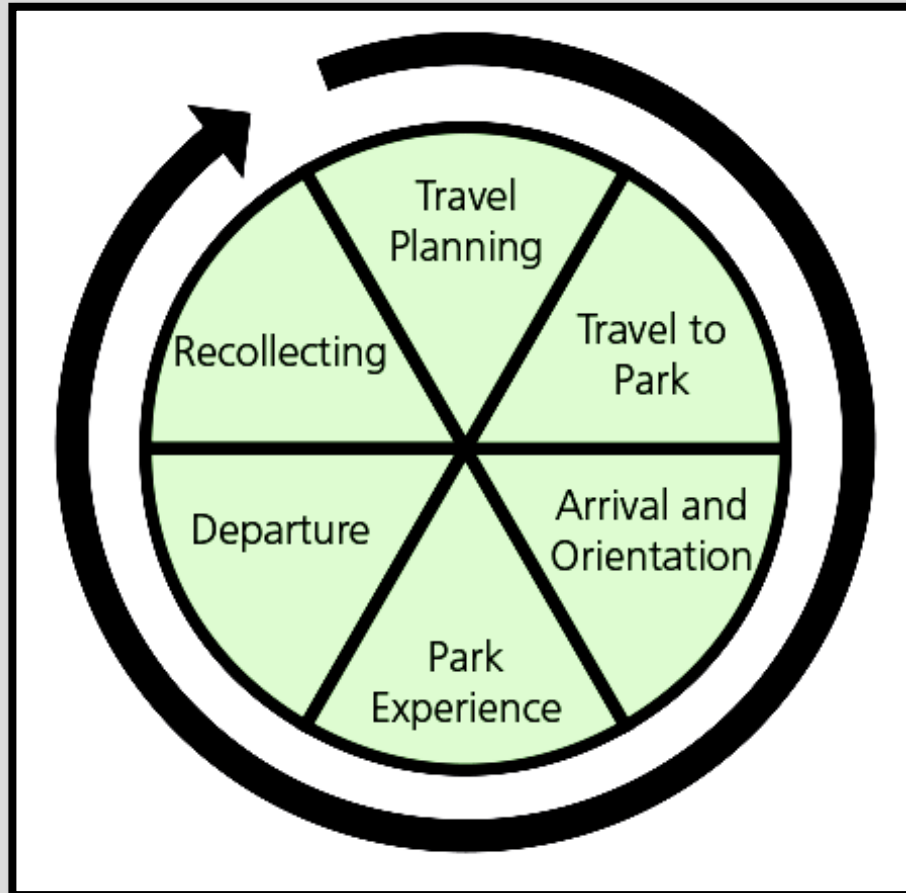
Common Interests

Intermountain Region LRTP Goal Areas

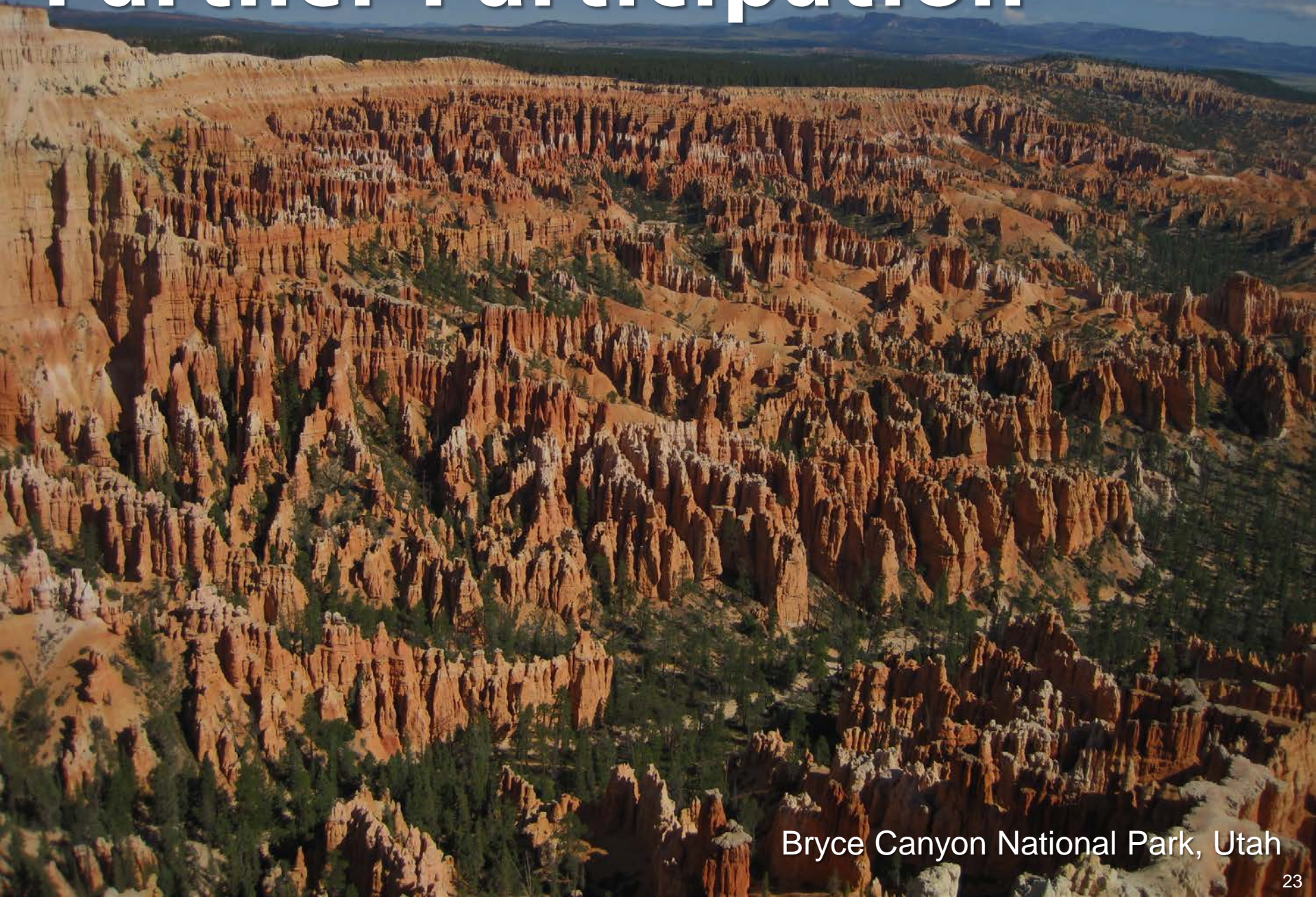
USDOT Planning Factors ¹	Asset Management	Strategic Investments	Resource Protection	Visitor Experience	Mobility Access, and Connectivity
Economic Vitality	●	●	●	●	●
Safety				●	
Security					
Accessibility & Mobility	●			●	●
Environment	●		●		
Connectivity	●	●		●	●
Efficiency	●	●		●	●
System Preservation	●	●			
Resiliency & Reliability	●		●		●
Travel & Tourism				●	●

Common Interests – Visitor Experience

Providing high quality visitor experiences is mission critical to the NPS and should be approached with the same level of intentional management applied for other resources.



Partner Participation



Bryce Canyon National Park, Utah

Partner Participation

- How would your agency like to engage?
- Is there a local office or other program that we should outreach to?



Bryce Canyon National Park, Utah

How to Stay Informed

- Visit the PEPC Site for updates:
 - <https://parkplanning.nps.gov/IMRLRTPupdate>
- Provide additional information for discussion questions
- Review and provide input on the draft LRTP Update (spring 2019 webinar and review)
- Contact Information
 - Erica Cole
 - (303) 969-2338
 - erica_cole@nps.gov