A person wearing a white long-sleeved shirt, dark shorts, and a helmet is riding a mountain bike on a dirt trail through a forest. The trail is covered with fallen leaves, and the surrounding trees are mostly bare, suggesting an autumn setting. The lighting is warm, with long shadows cast across the path.

## Appendices

# A-H and References

Photo Credit: Philip Hodges



This page intentionally left blank.



## Appendix A: Unit Maps, Alternative 1, No Action (Existing Conditions)

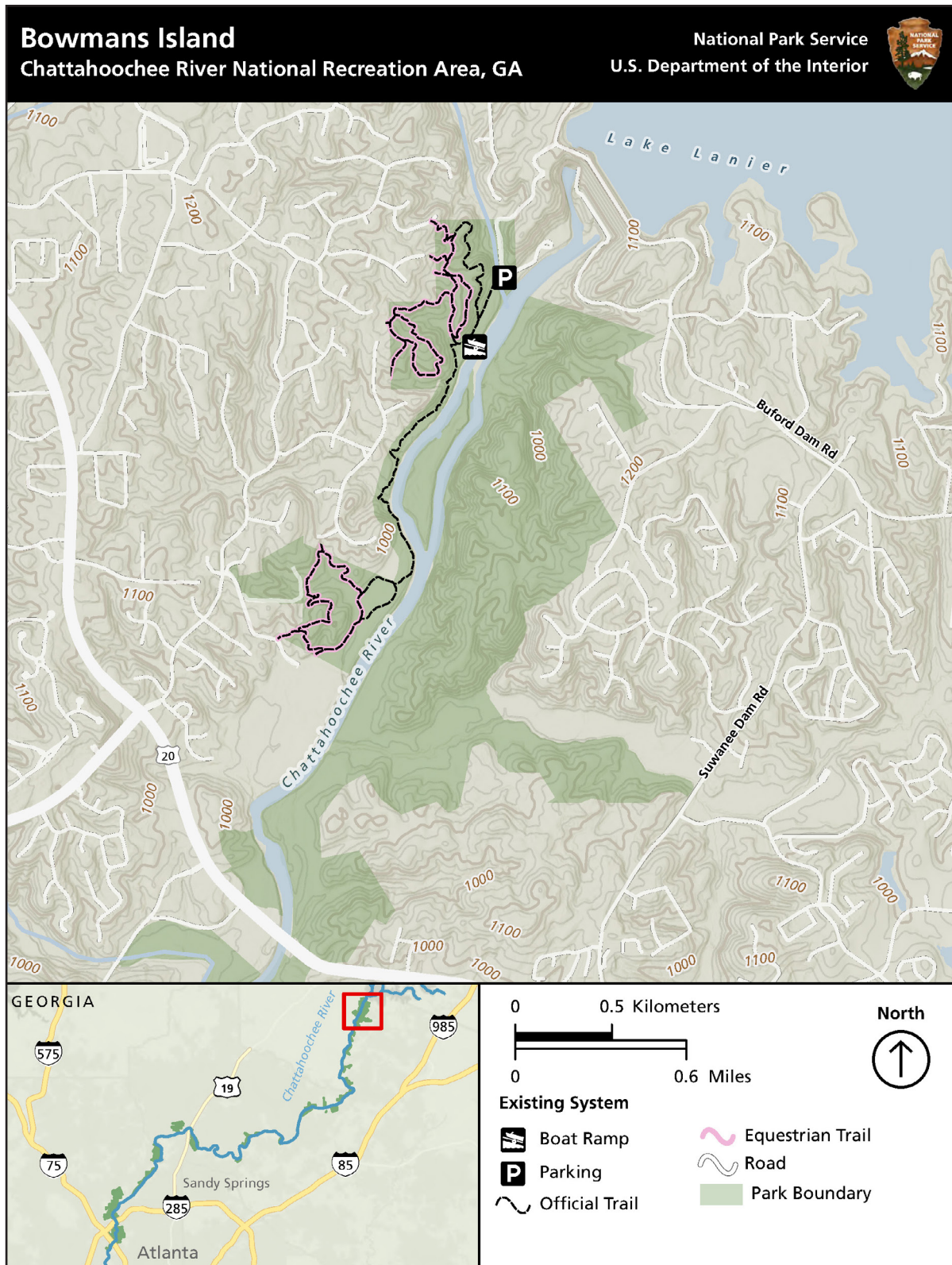


Figure A-1. Existing Trail System – Bowmans Island



# Bowmans North Detail

## Chattahoochee River National Recreation Area, GA

National Park Service  
U.S. Department of the Interior

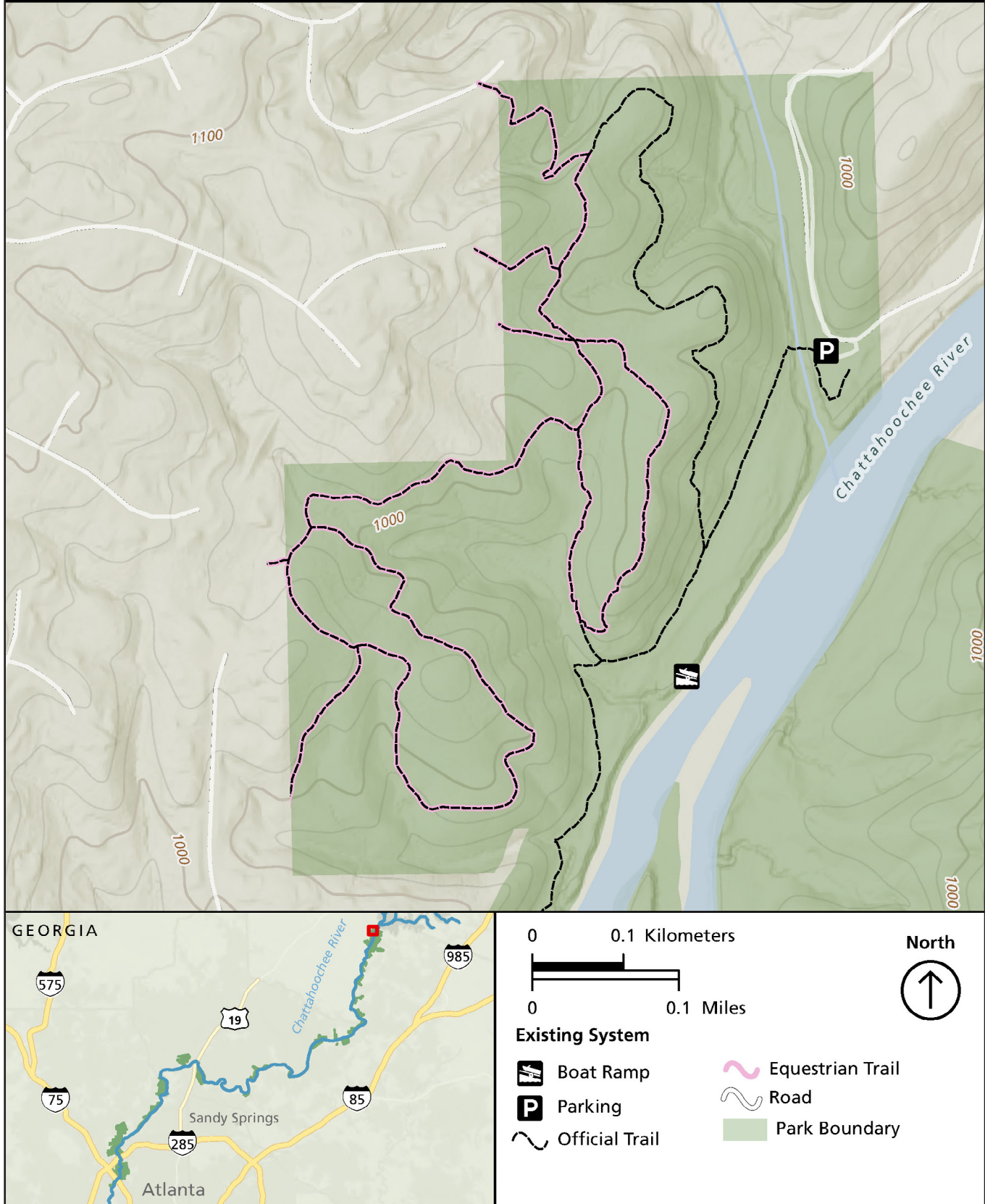


Figure A-2. Existing Trail System – Bowmans Island North



# Orrs Ferry Chattahoochee River National Recreation Area, GA

National Park Service  
U.S. Department of the Interior

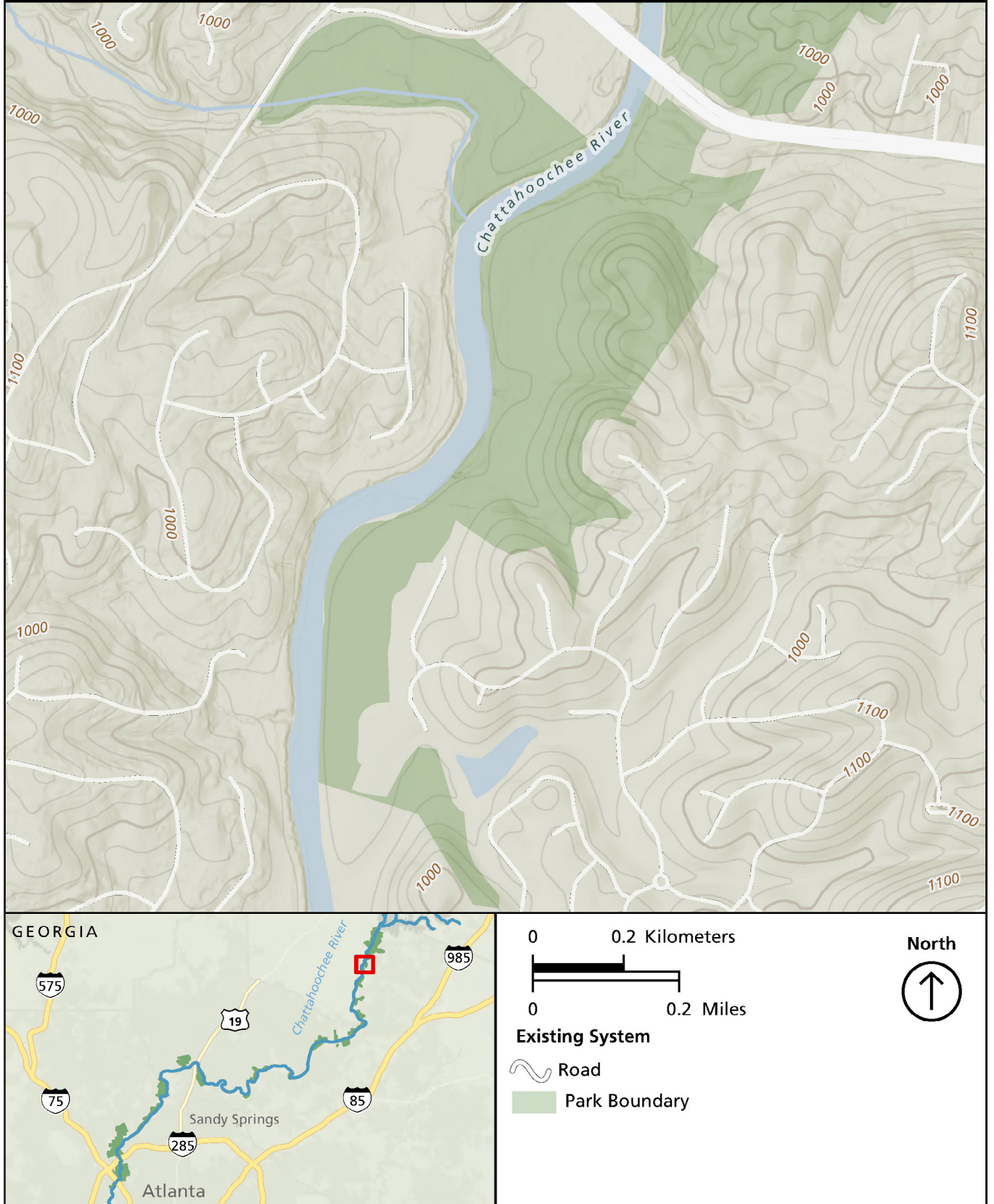


Figure A-3. Existing Trail System – Orrs Ferry



# Settles Bridge Chattahoochee River National Recreation Area, GA

National Park Service  
U.S. Department of the Interior

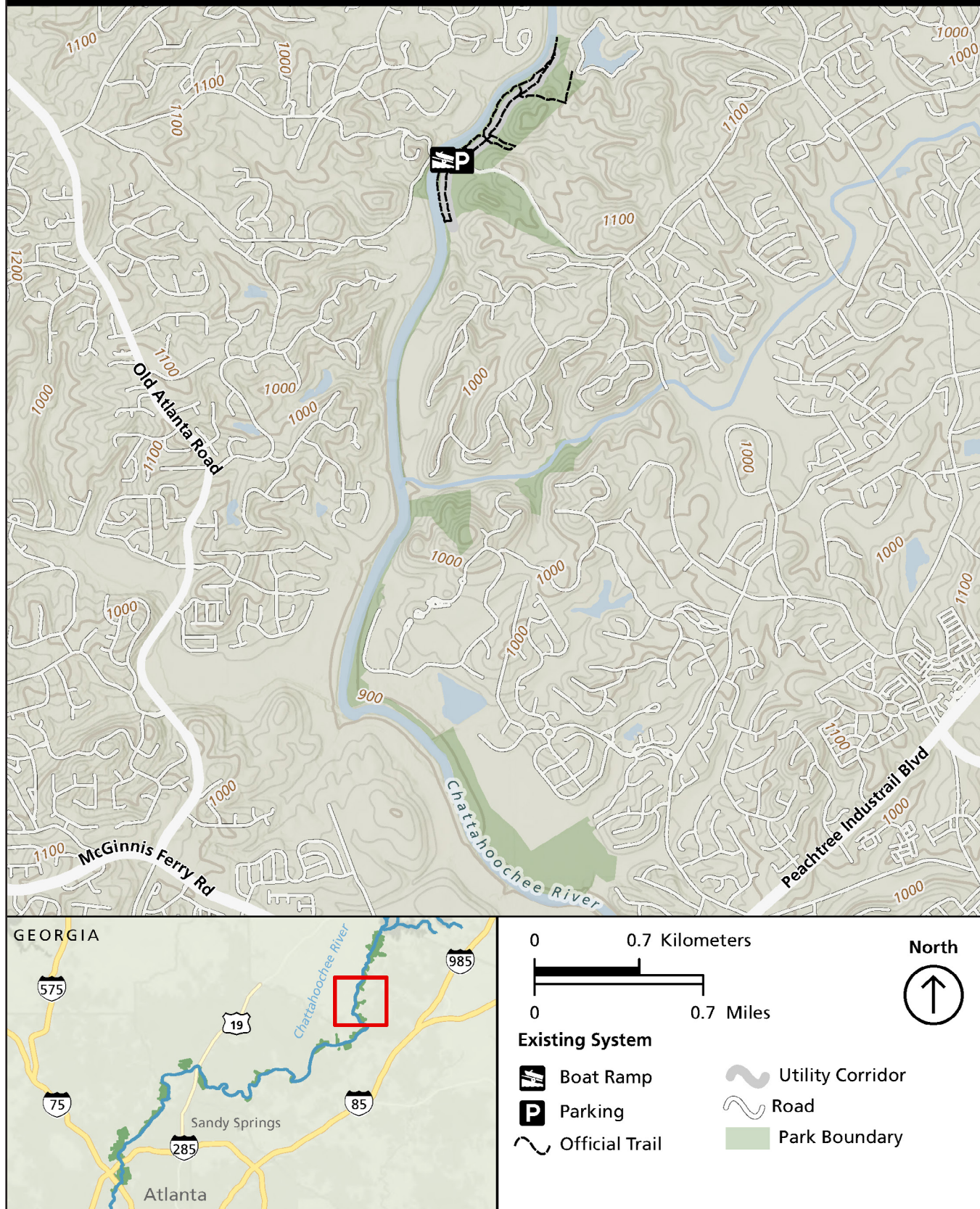


Figure A-4. Existing Trail System – Settles Bridge



# Settles Bridge North Detail

## Chattahoochee River National Recreation Area, GA

National Park Service  
U.S. Department of the Interior

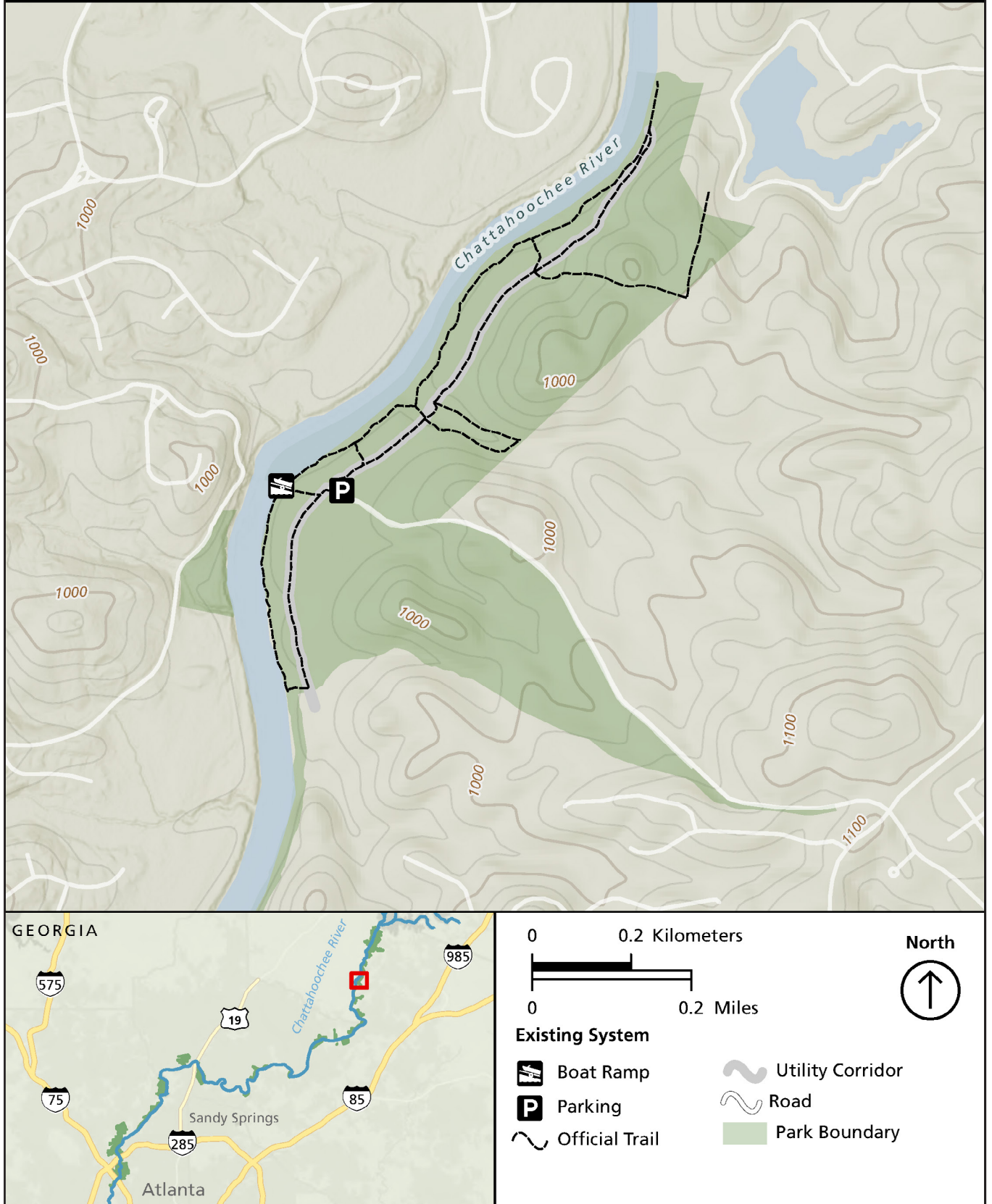


Figure A-5. Existing Trail System – Settles Bridge North



# McGinnis Ferry

Chattahoochee River National Recreation Area, GA

National Park Service  
U.S. Department of the Interior

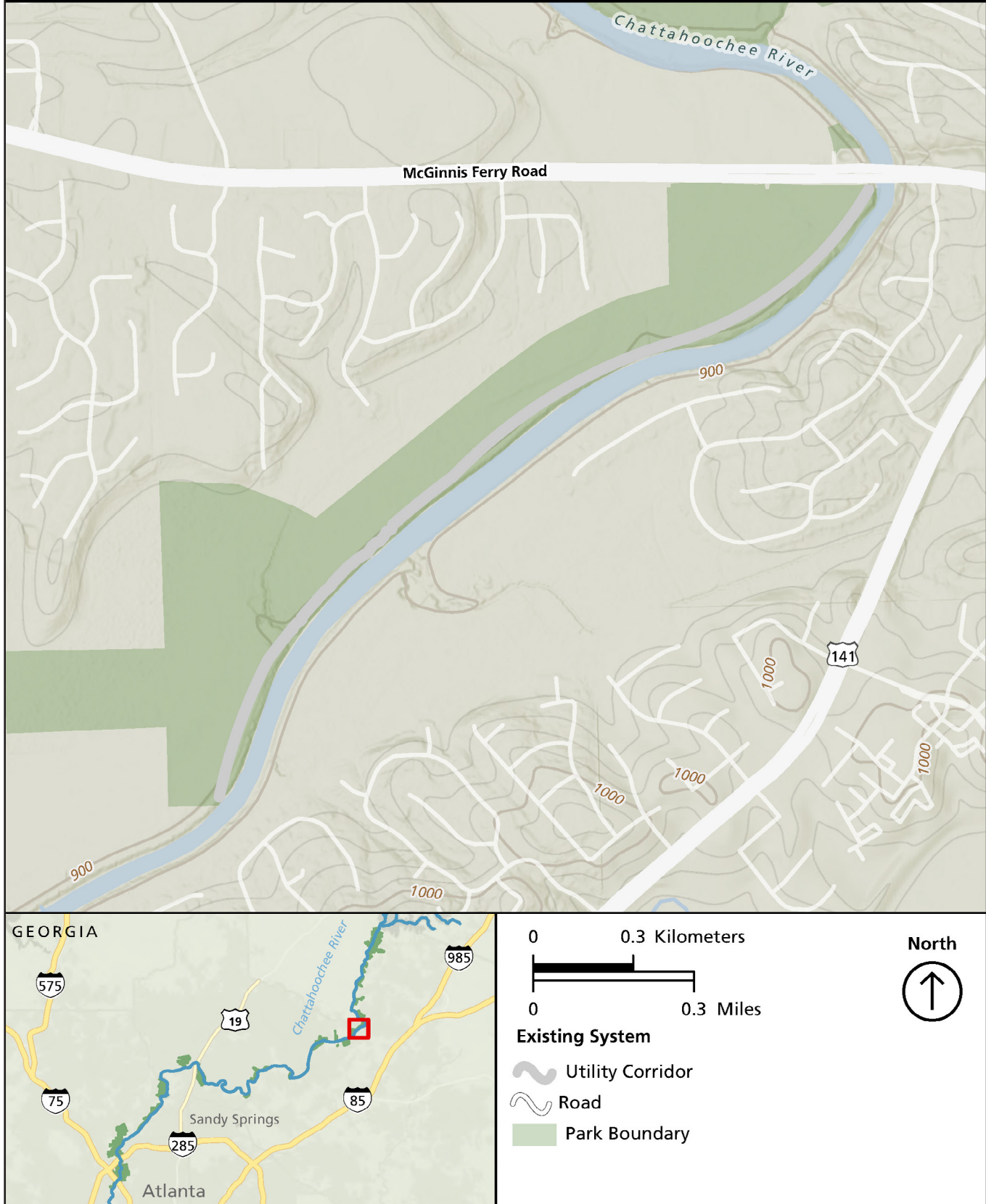


Figure A-6. Existing Trail System – McGinnis Ferry



# Suwanee Creek

## Chattahoochee River National Recreation Area, GA

National Park Service  
U.S. Department of the Interior

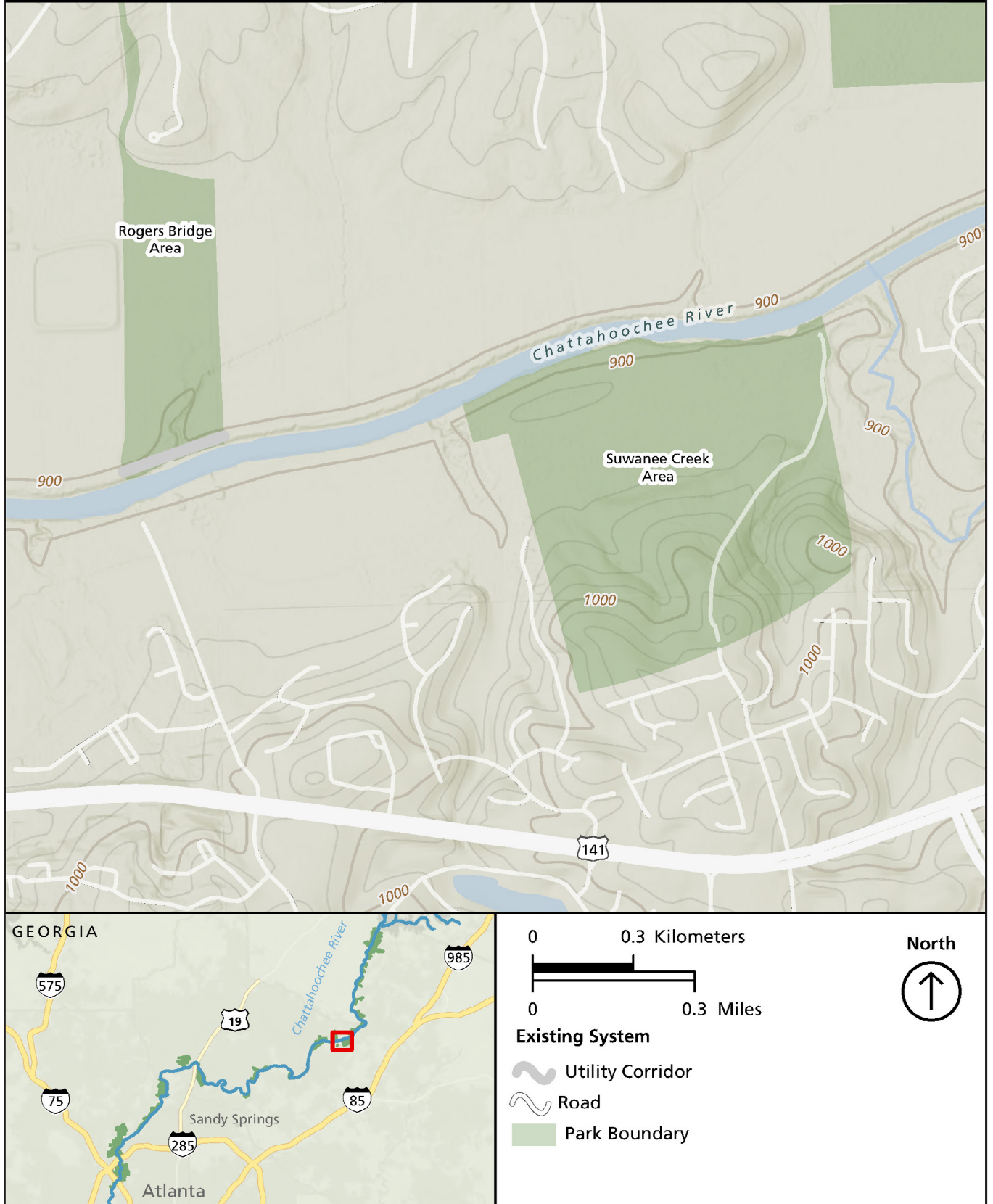


Figure A-7. Existing Trail System – Suwanee Creek



# Abbotts Bridge

## Chattahoochee River National Recreation Area, GA

National Park Service  
U.S. Department of the Interior

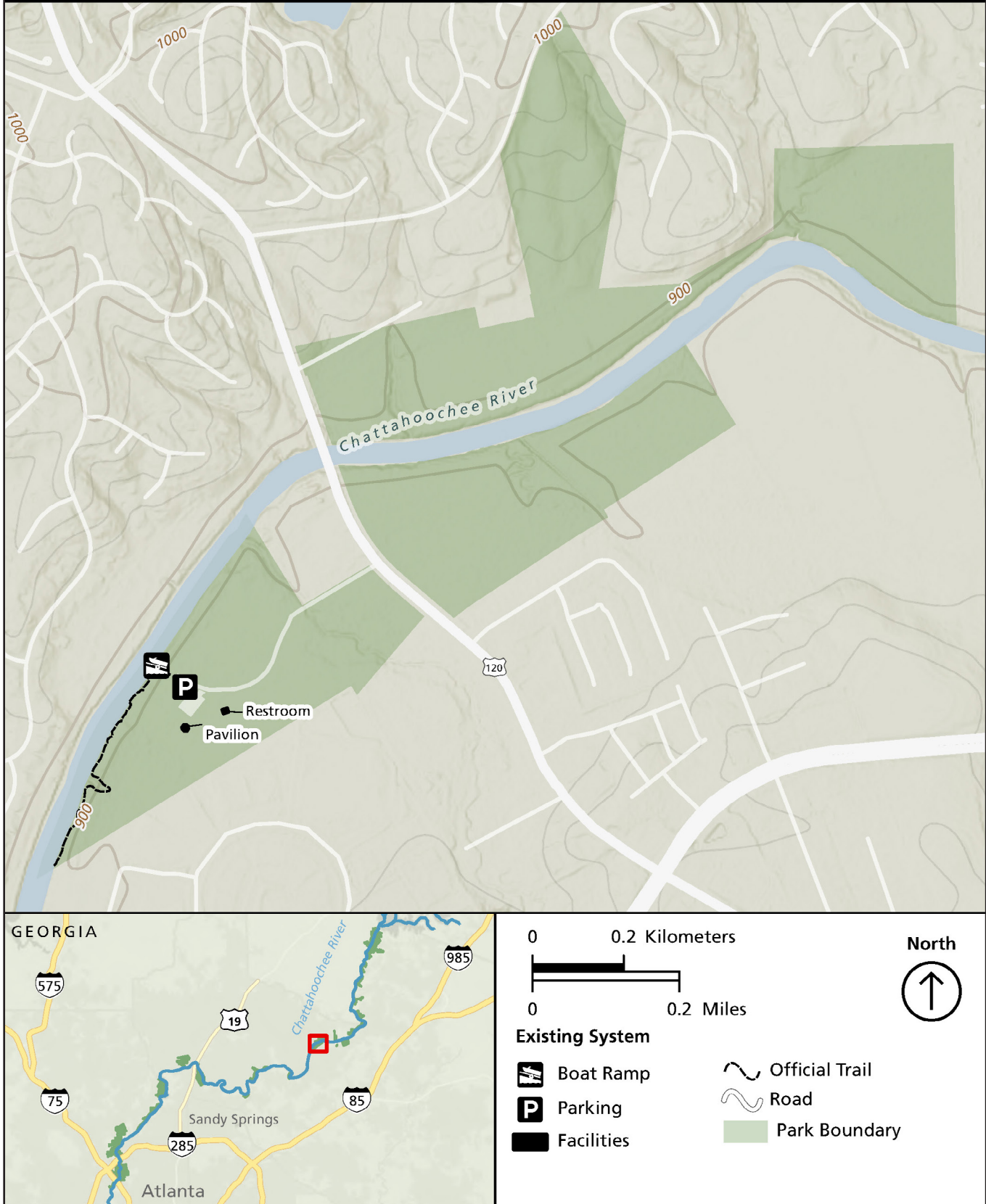


Figure A-8. Existing Trail System – Abbotts Bridge



**Abbotts Bridge South Detail**  
Chattahoochee River National Recreation Area, GA

National Park Service  
U.S. Department of the Interior

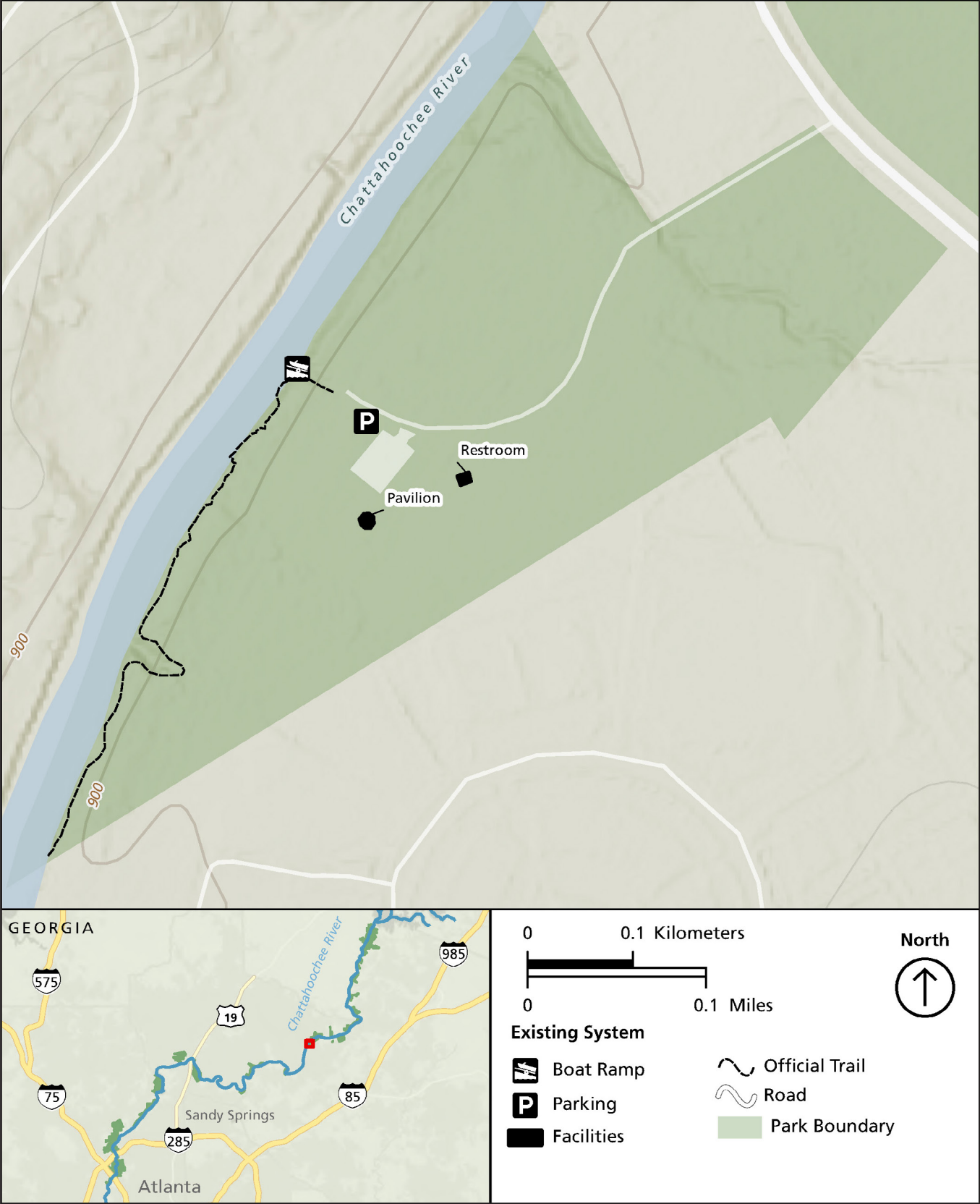


Figure A-9. Existing Trail System – Abbotts Bridge South



# Medlock Bridge

## Chattahoochee River National Recreation Area, GA

National Park Service  
U.S. Department of the Interior

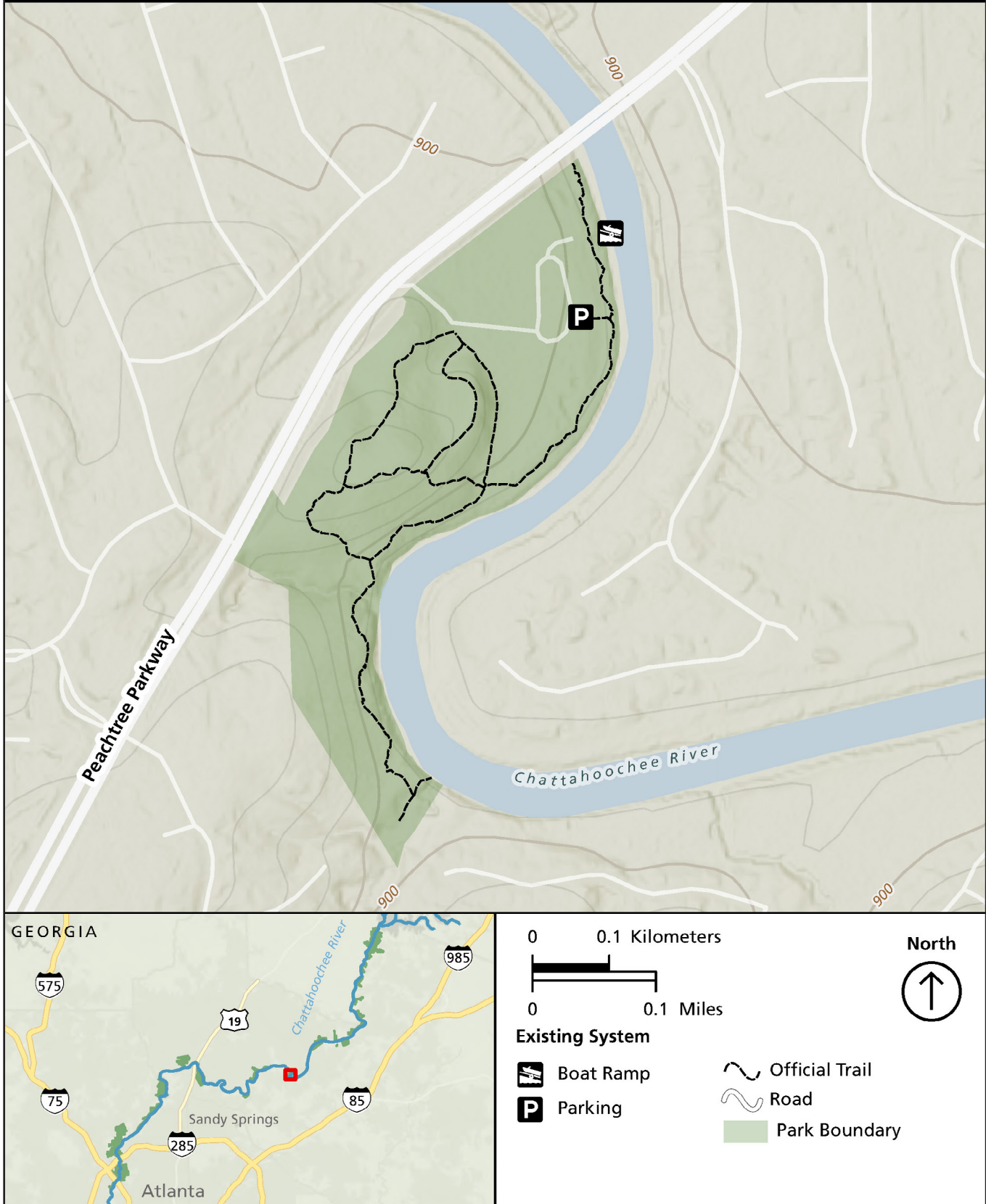


Figure A-10. Existing Trail System – Medlock Bridge

# Jones Bridge North

## Chattahoochee River National Recreation Area, GA

National Park Service  
U.S. Department of the Interior

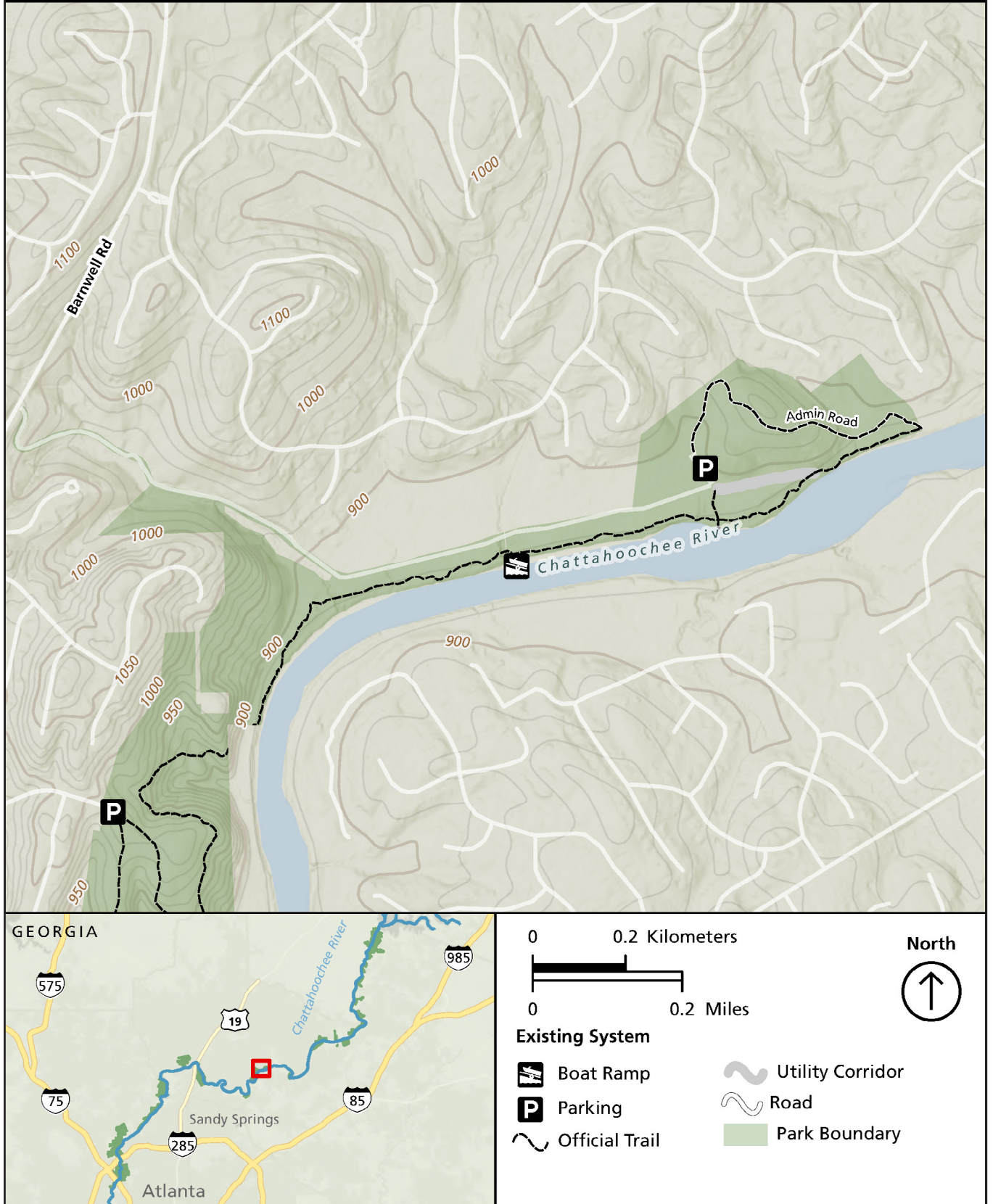


Figure A-11. Existing Trail System – Jones Bridge North



# Jones Bridge South

## Chattahoochee River National Recreation Area, GA

National Park Service  
U.S. Department of the Interior

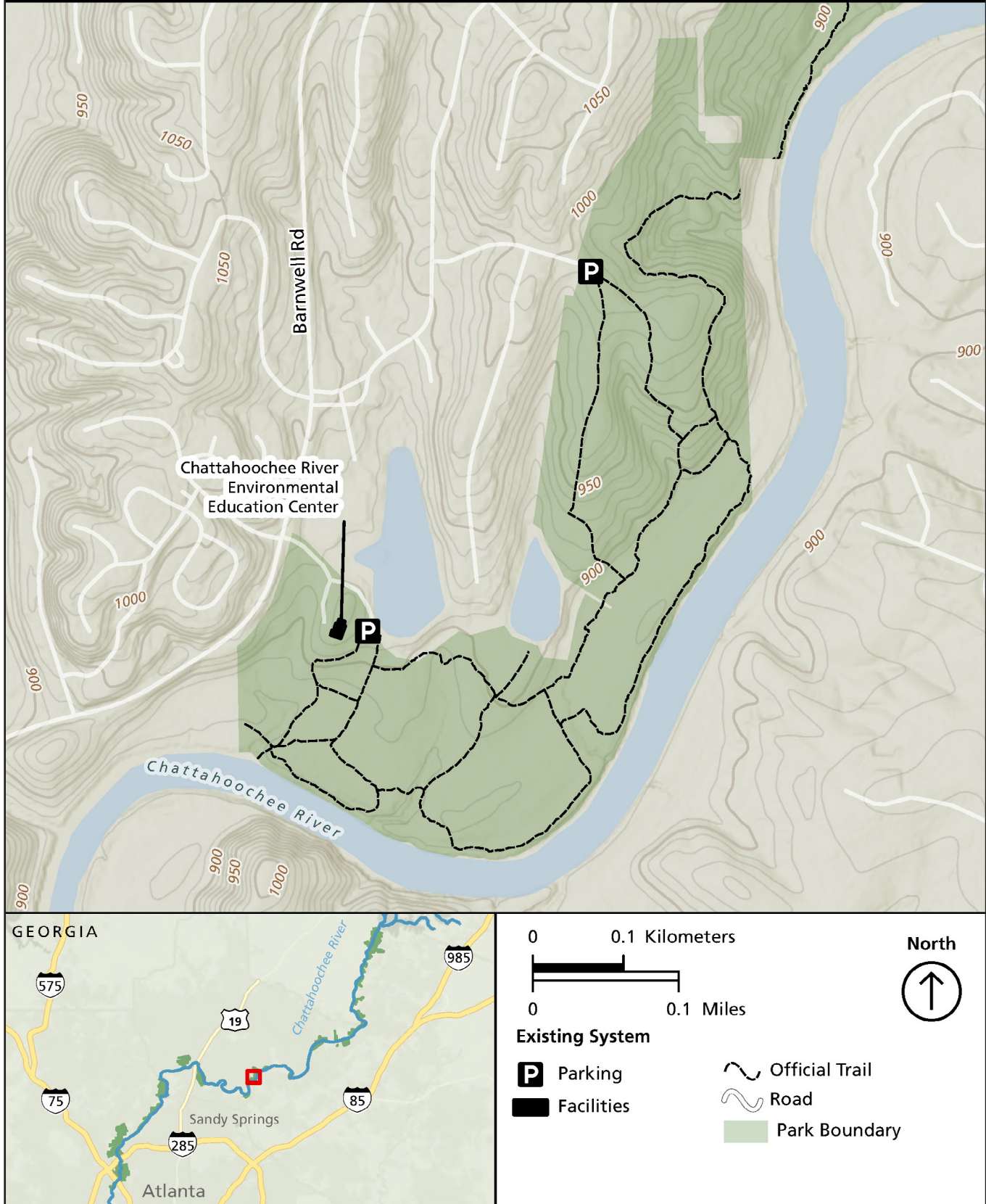


Figure A-12. Existing Trail System – Jones Bridge South

# Holcomb Bridge

## Chattahoochee River National Recreation Area, GA

National Park Service  
U.S. Department of the Interior

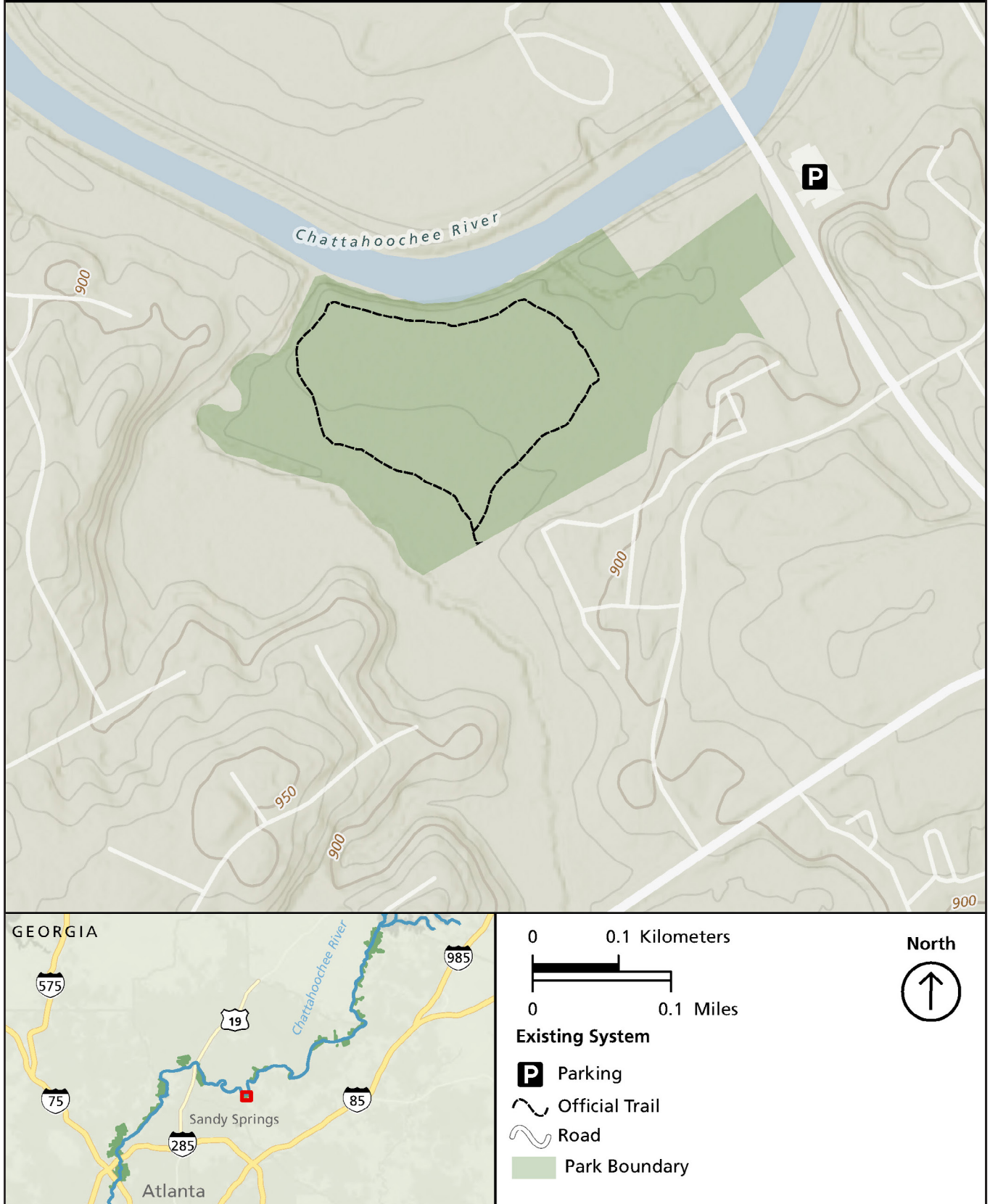


Figure A-13. Existing Trail System – Holcomb Bridge



# Island Ford North

## Chattahoochee River National Recreation Area, GA

National Park Service  
U.S. Department of the Interior

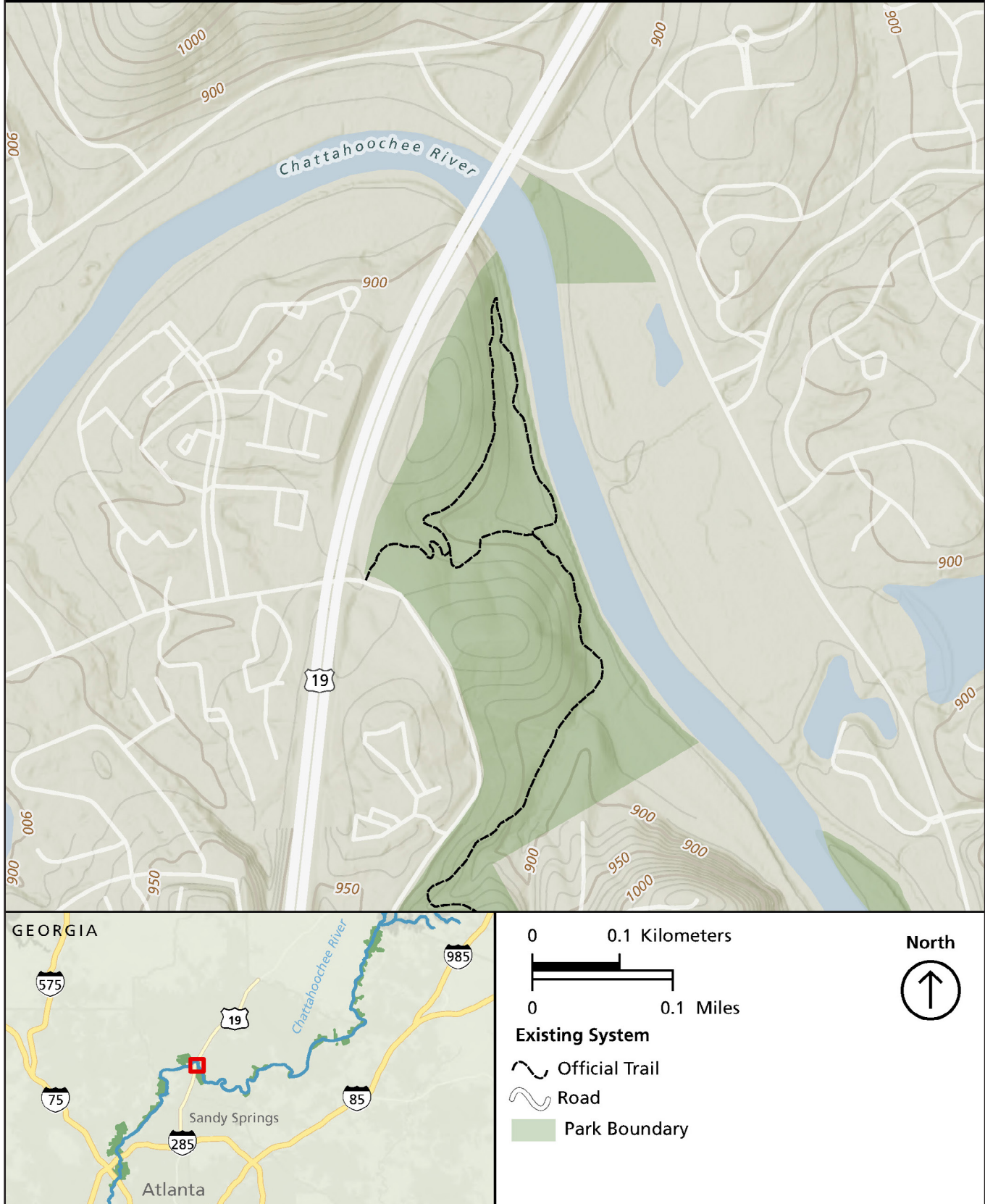


Figure A-14. Existing Trail System – Island Ford North

# Island Ford South

## Chattahoochee River National Recreation Area, GA

National Park Service  
U.S. Department of the Interior

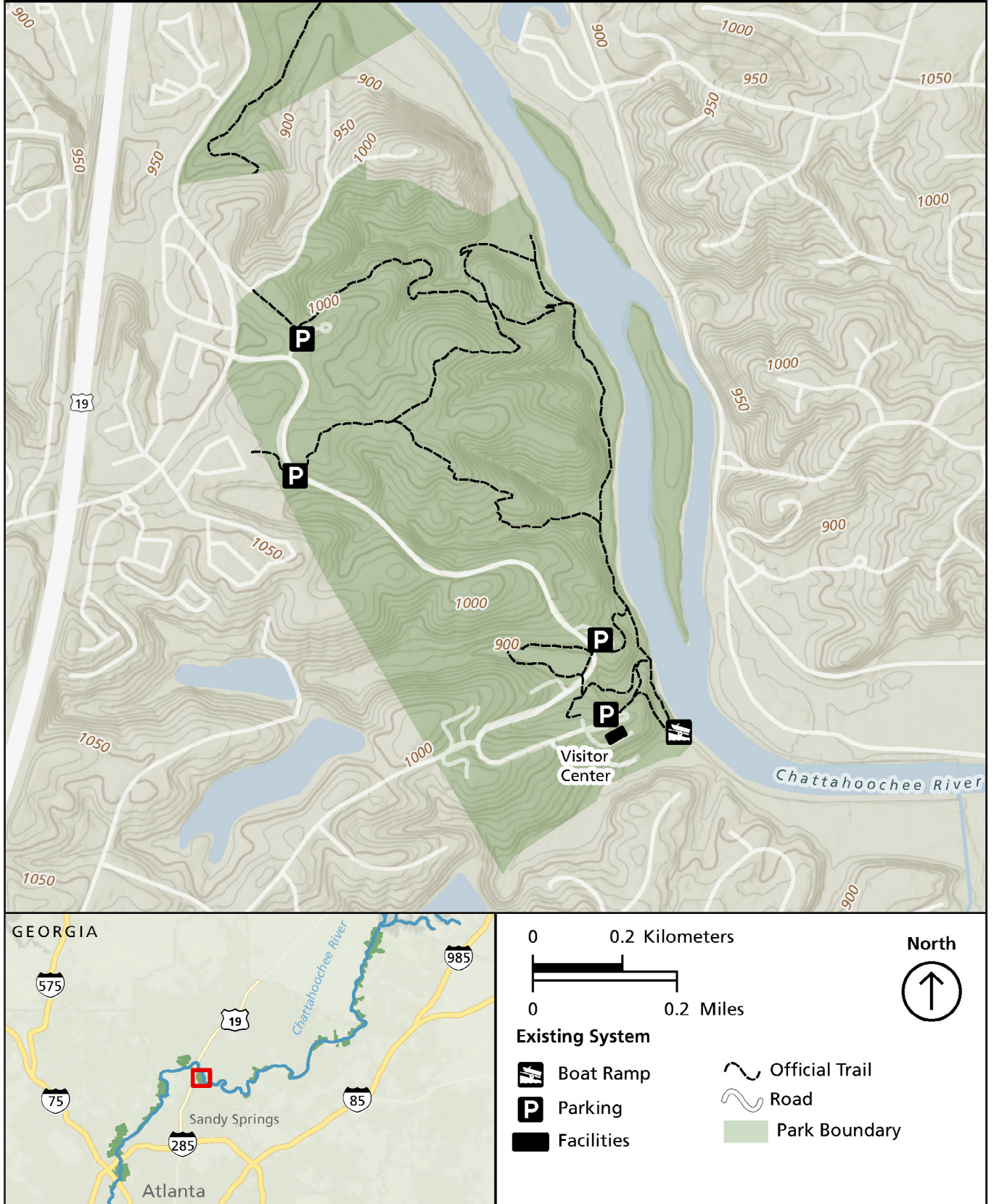


Figure A-15. Existing Trail System – Island Ford South



# Vickery Creek

## Chattahoochee River National Recreation Area, GA

National Park Service  
U.S. Department of the Interior

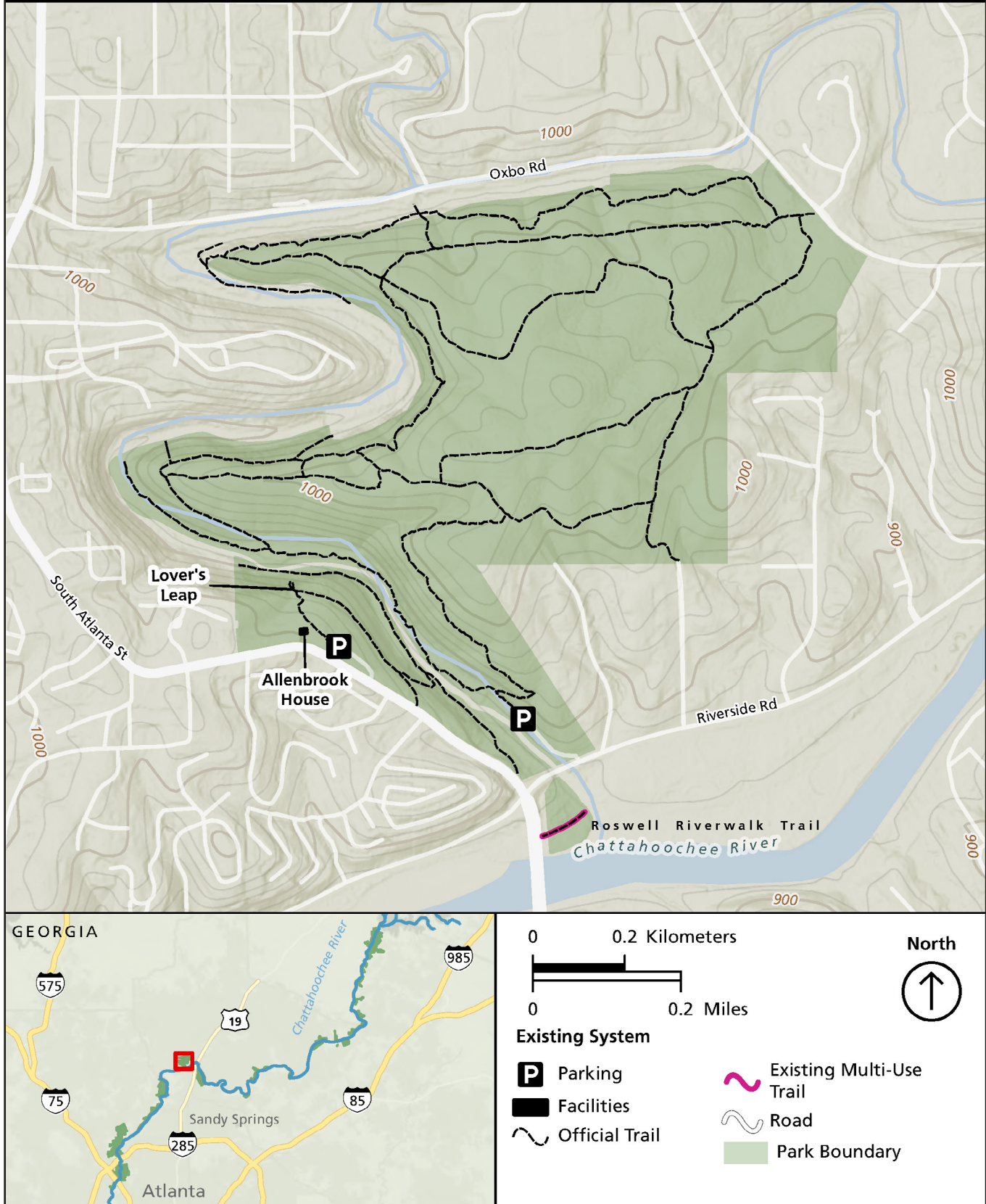


Figure A-16. Existing Trail System – Vickery Creek



# Gold Branch

## Chattahoochee River National Recreation Area, GA

National Park Service  
U.S. Department of the Interior

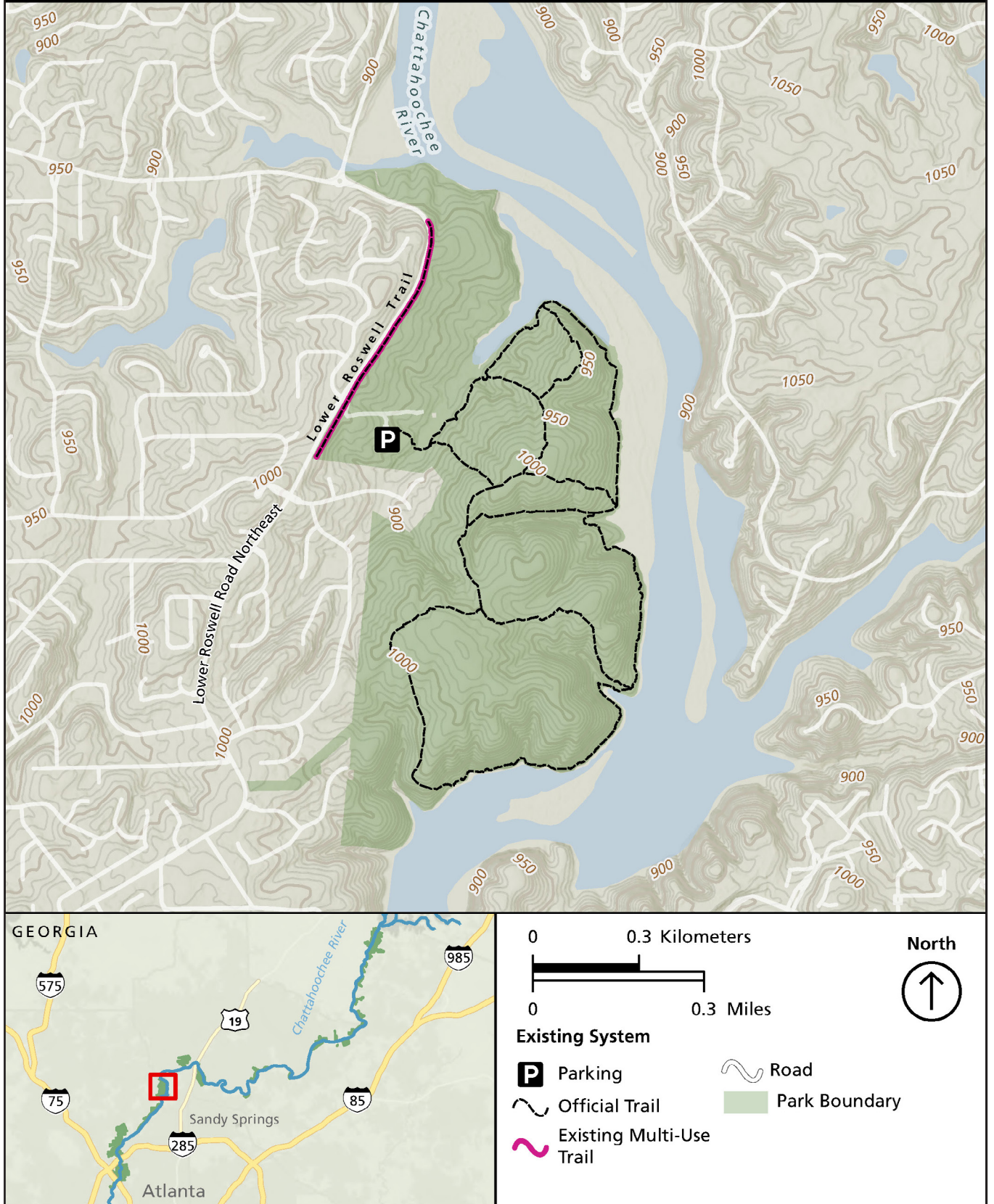


Figure A-17. Existing Trail System – Gold Branch



# Johnson Ferry South

## Chattahoochee River National Recreation Area, GA

National Park Service  
U.S. Department of the Interior

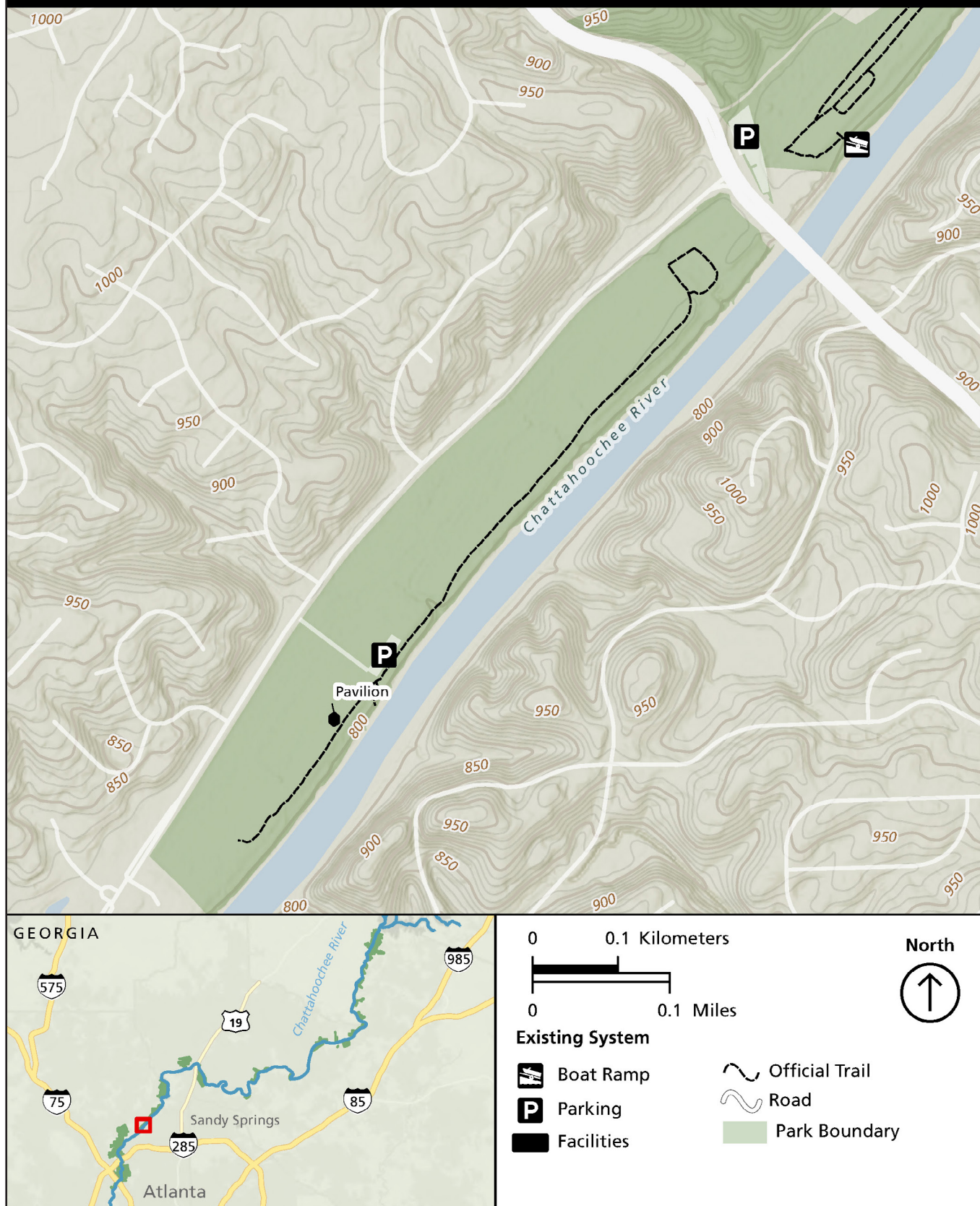


Figure A-18. Existing Trail System – Johnson Ferry South



# Cochran Shoals - Sope Creek Trailhead

## Chattahoochee River National Recreation Area, GA

National Park Service  
U.S. Department of the Interior

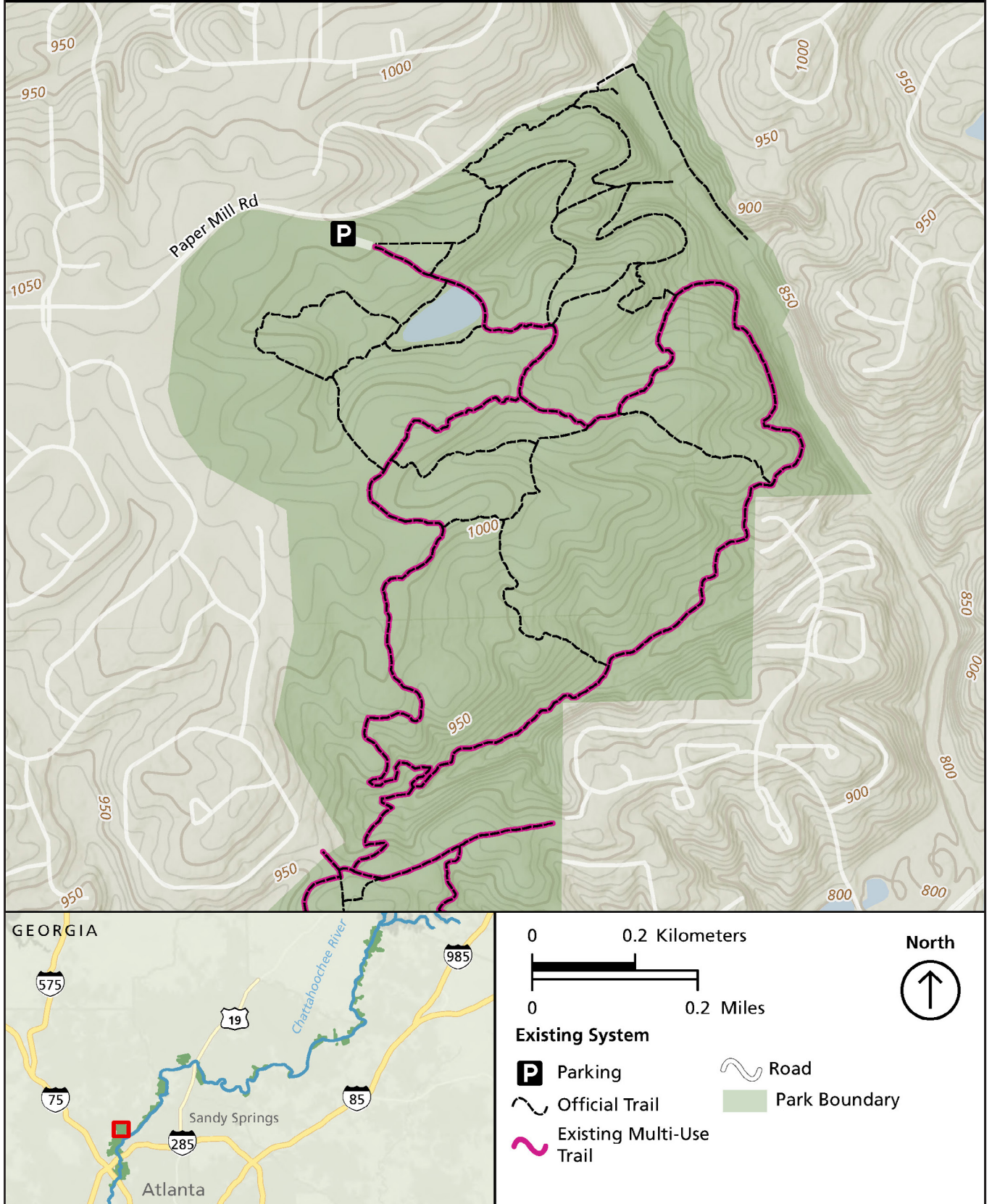


Figure A-19. Existing Trail System – Cochran Shoals, Sope Creek Trailhead



# Cochran Shoals - Columns Drive Trailhead

## Chattahoochee River National Recreation Area, GA

National Park Service  
U.S. Department of the Interior

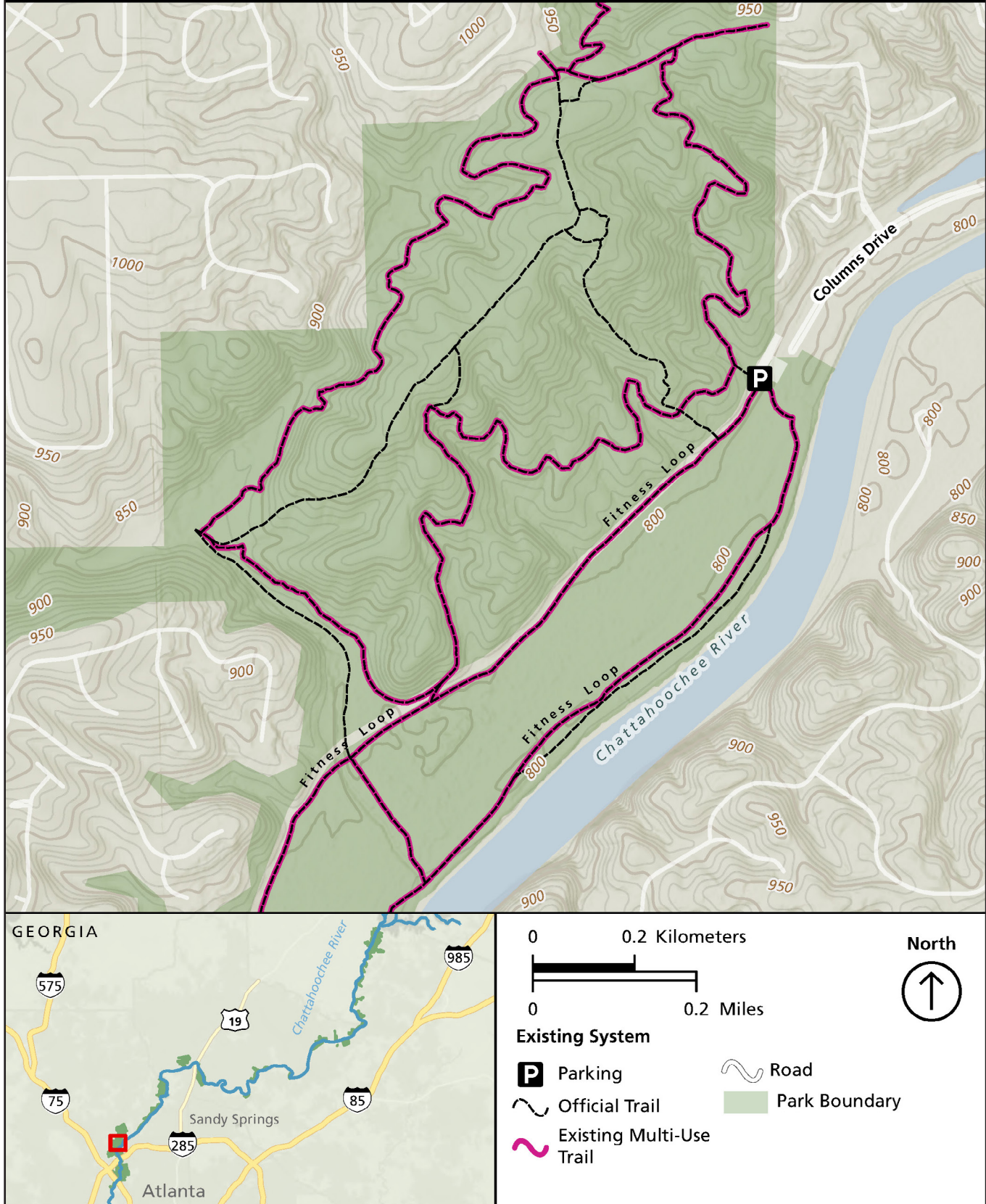


Figure A-20. Existing Trail System – Cochran Shoals, Columns Drive Trailhead



# Cochran Shoals - Interstate N/Powers Island

## Chattahoochee River National Recreation Area, GA

National Park Service  
U.S. Department of the Interior

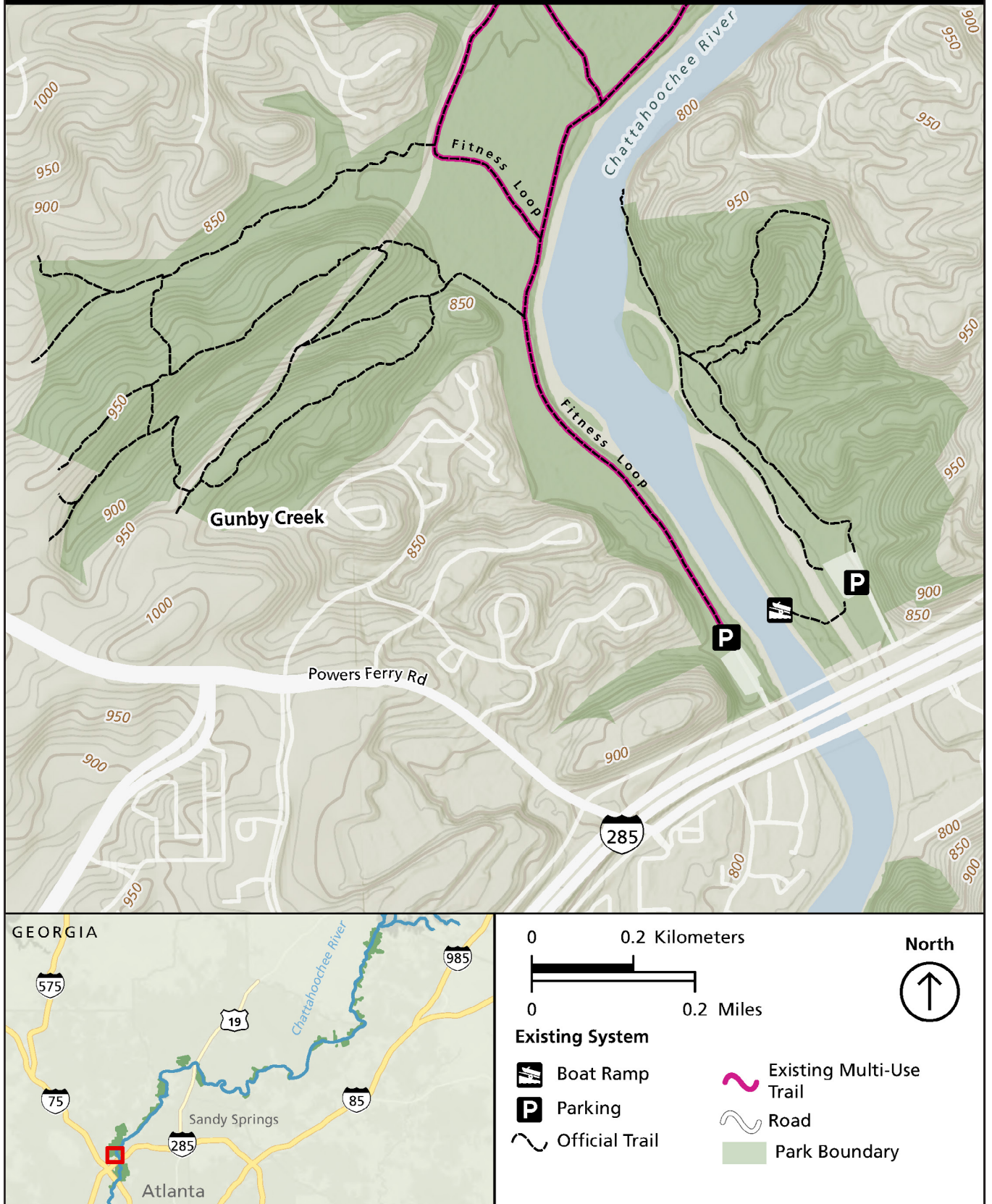


Figure A-21. Existing Trail System – Cochran Shoals, Interstate North/Powers Island



# Palisades North

## Chattahoochee River National Recreation Area, GA

National Park Service  
U.S. Department of the Interior

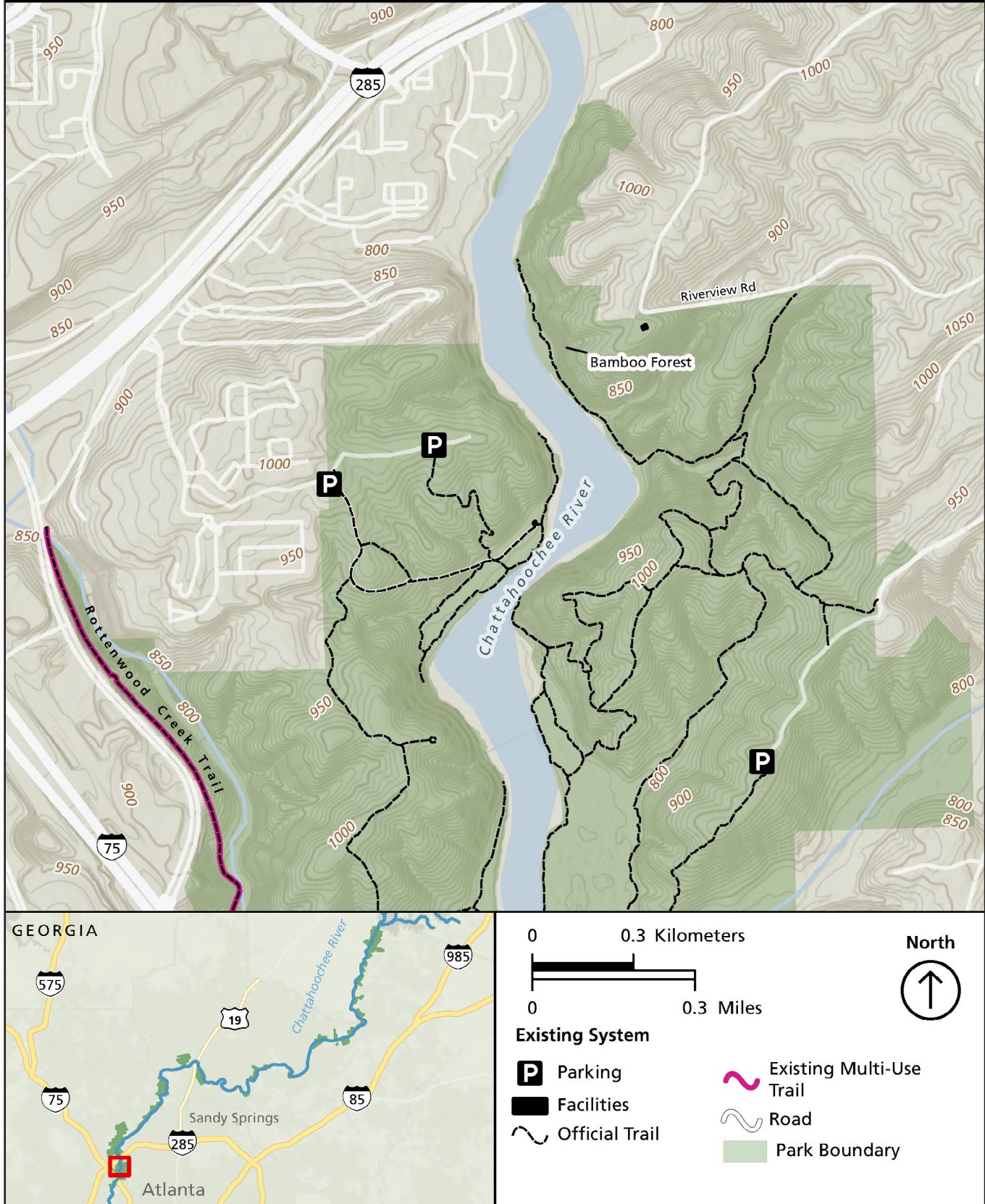


Figure A-22. Existing Trail System – Palisades North



# Palisades South Chattahoochee River National Recreation Area, GA

National Park Service  
U.S. Department of the Interior

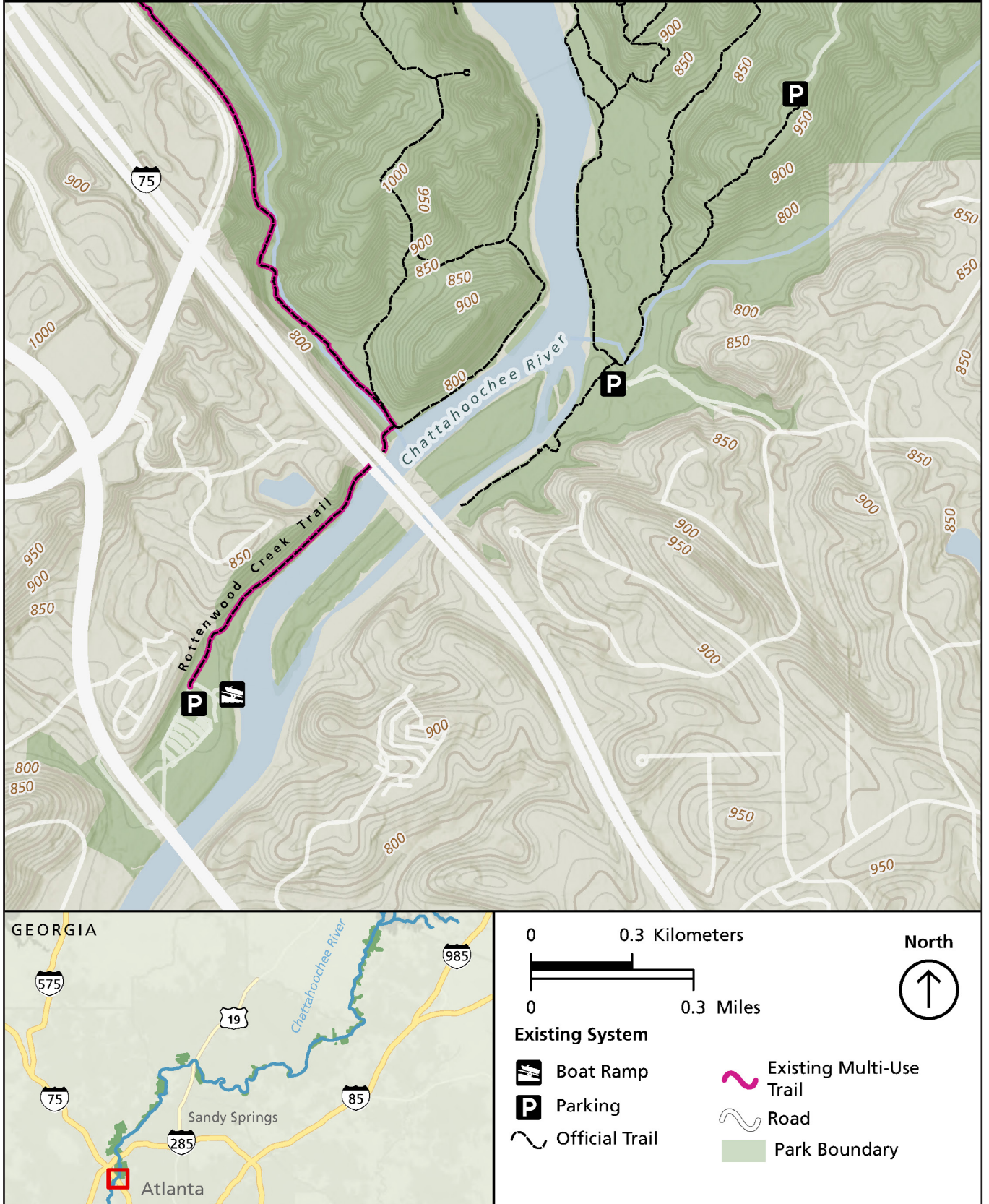


Figure A-23. Existing Trail System – Palisades South