

National Park Service
U.S. Department of the Interior



Rehabilitate Bridalveil Fall Area

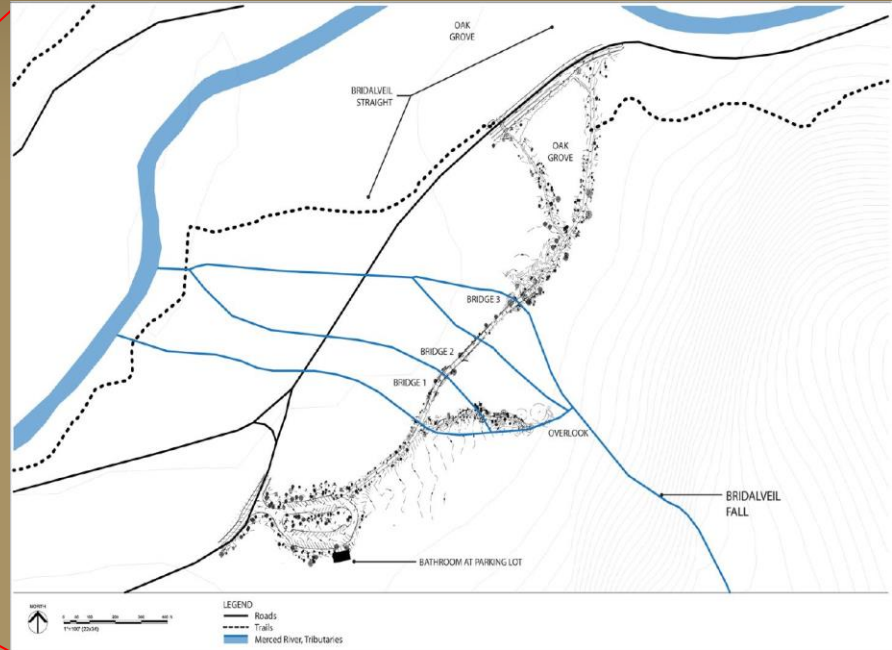
Yosemite National Park

Presenter: R. Brad Lewis, Landscape Architect, NPS Project Manager

Park & Project Orientation



Yosemite National Park



West Yosemite Valley

Background: Project Importance/Benefits



- Iconic Hanging Valley Waterfall
- First Stop for most Park Visitors
- Unique Public/Private Partnership Opportunity with FY18 and FY19 Helium Act Grant(s) and Yosemite Conservancy Match

Background: Project Importance/Benefits



- Decades of Deferred Maintenance
- Failing Infrastructure and Costly Maintenance
- Diminished Visitor Experience due to poor quality facilities, crowding and obscured views

Background: Project Importance/Benefits



- Failed drainage system has created dangerous conditions, especially in winter
- Crowding has resulted in impacts to natural resources
- Lack of universal accessibility on trails

Project Scope/Phasing

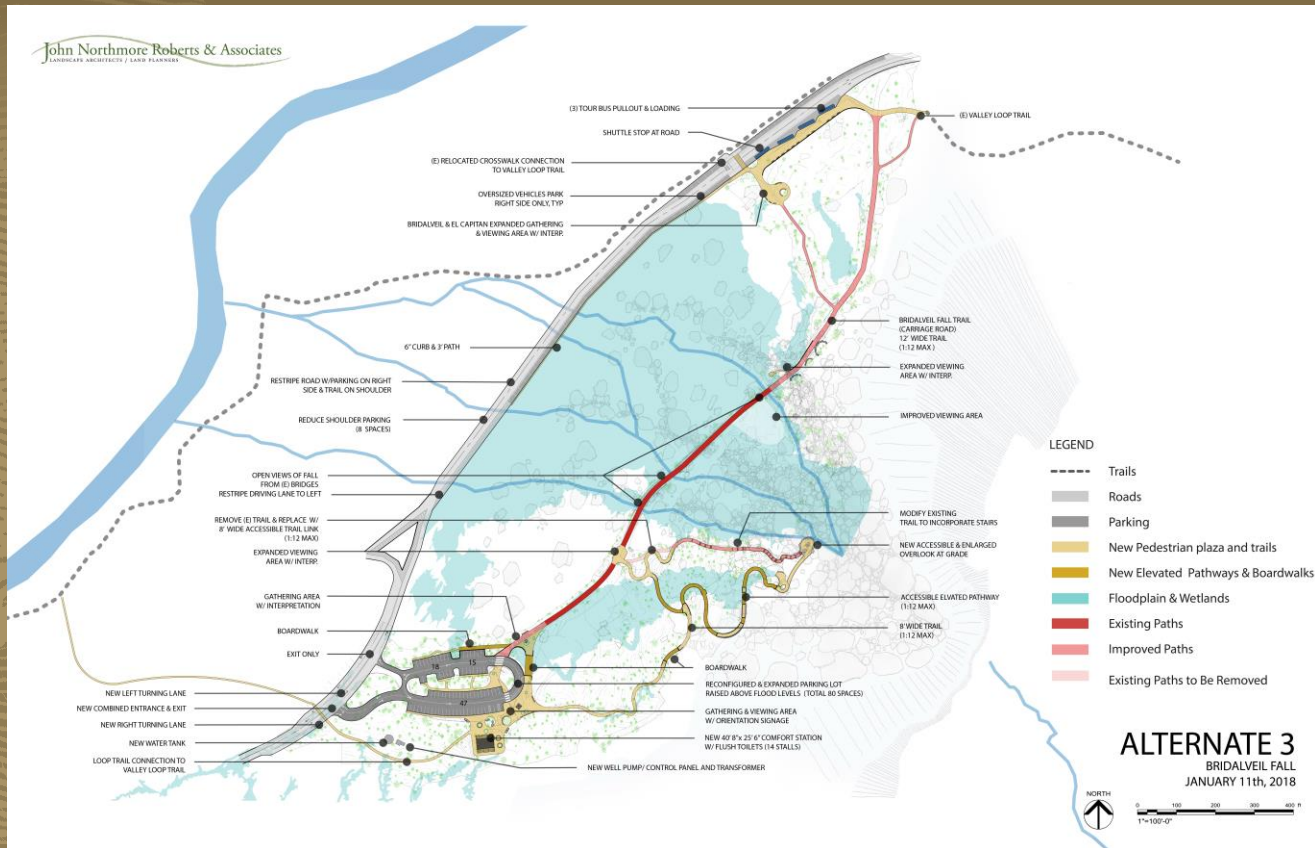
Helium Act FY18

- Phase 1 2018/2019 – Add new Accessible Trails, Extend and Repair existing Trails, Expanded Viewing Platform(s), Add new Signage and Interpretation

Helium Act FY19

- Phase 2 2019/2020 - Replace Comfort Station, Repair Drainage, Reconstruct Parking Lot, Add Electrical Power, Well, Water Treatment and Storage Facility, Lift Station and Sewer Connection

Preferred Alternative

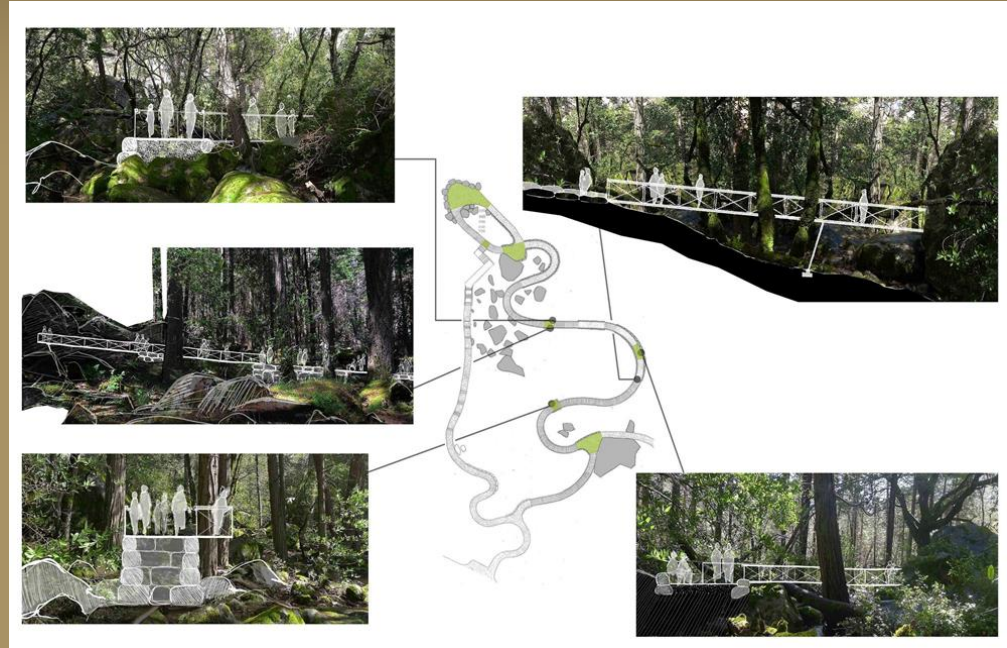
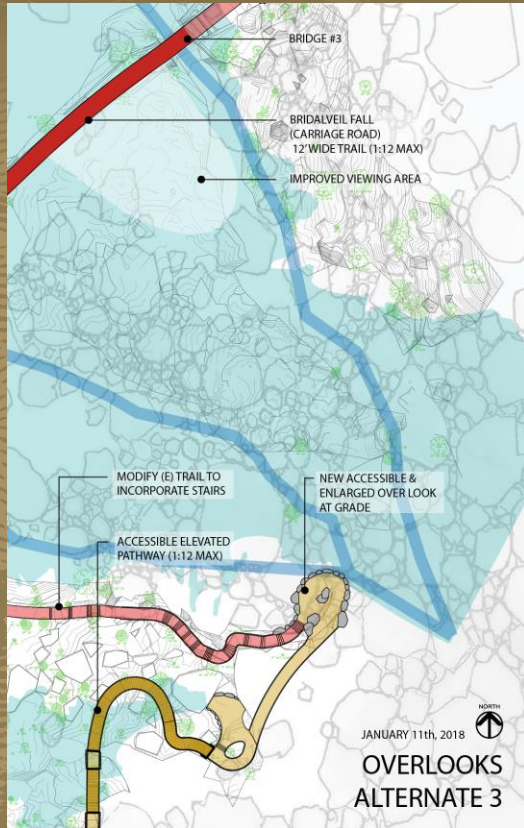


Preferred Alternative

Overview:

- Single new flush toilet comfort station at parking lot
- Bus parking south side of Southside Drive, no pull-out
- Enlarge existing fall overlook in current location
- Add new fall overlook at lower elevation
- No bridge extension or eastside loop
- Maintain and enhance wedding site
- Adjust new trail alignment to avoid sensitive cultural sites

Preferred Alternative - Details



Accessible Trail

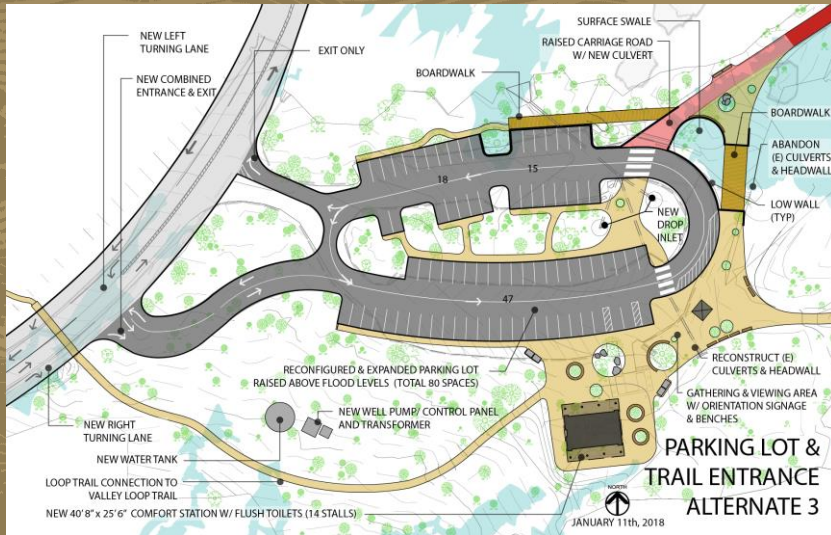
Preferred Alternative - Details



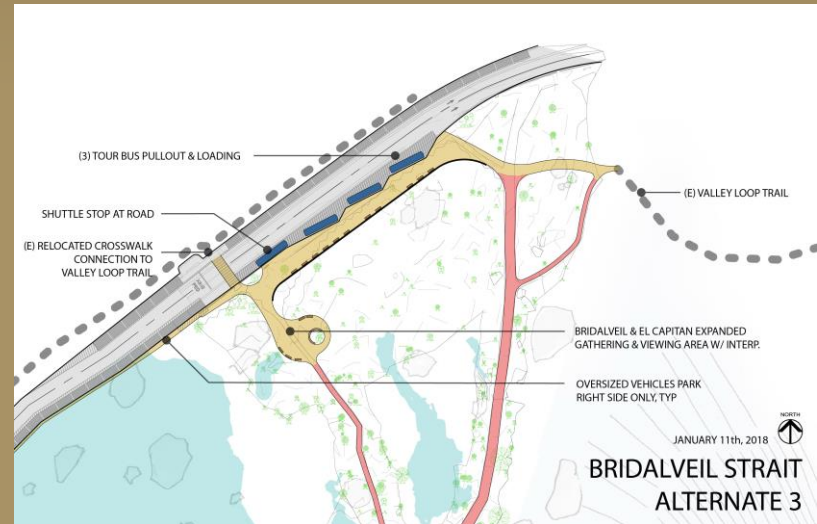
Preferred Alternative - Details



Preferred Alternative - Details

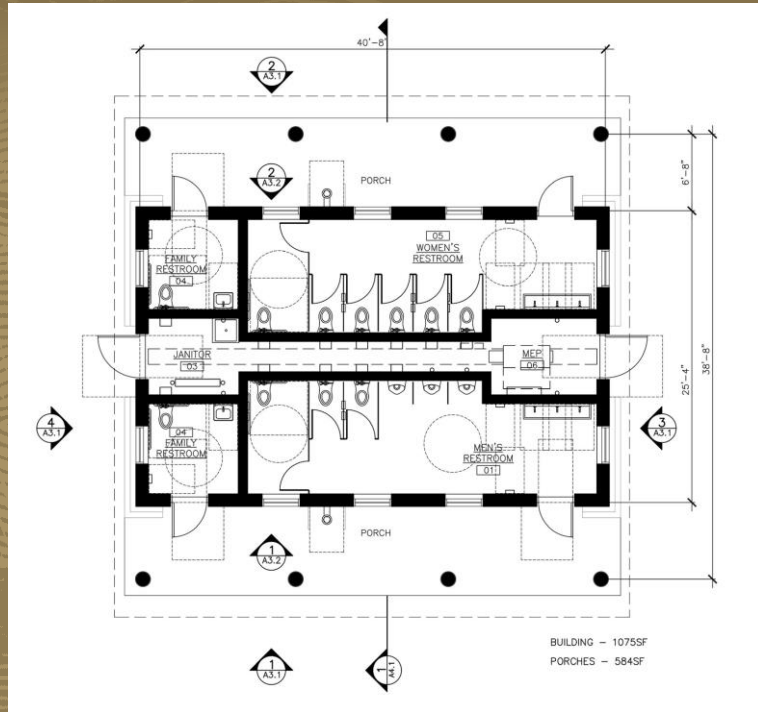


Upper Parking Lot



Bridalveil Strait (Southside Drive)

Preferred Alternative - Comfort Station



Floor Plan

Facility Summary*

- 6 Women's water closets
- 3 Men's water closets
- 2 Family water closets
- 3 Men's urinals
- 8 Comfort station sinks
- 1 Janitor sink
- 2 Water bottle filling stations

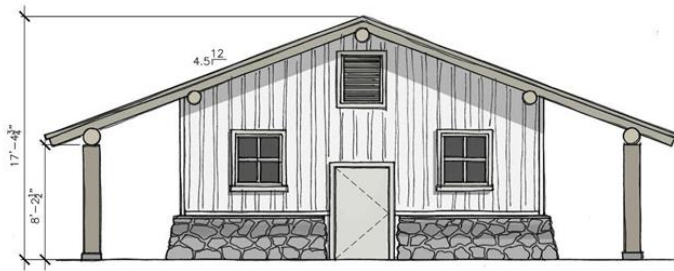
* Supported by NPS Facility Model

Preferred Alternative - Details



4
A3.1

SOUTH ELEVATION
SCALE ©



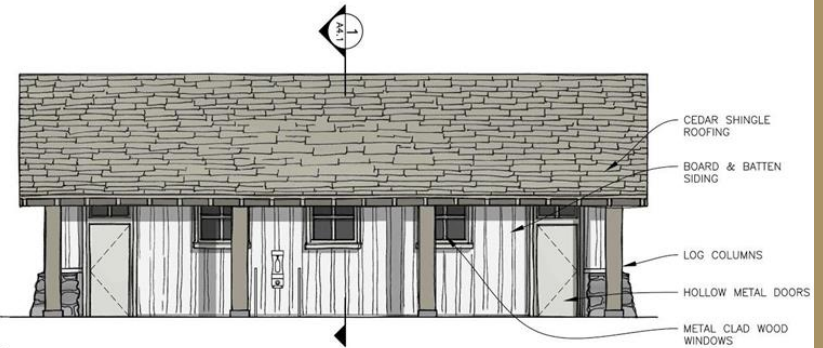
3
A3.1

NORTH ELEVATION
SCALE ©



2
A3.1

WEST ELEVATION
SCALE ©



1
A3.1

EAST ELEVATION
SCALE ©

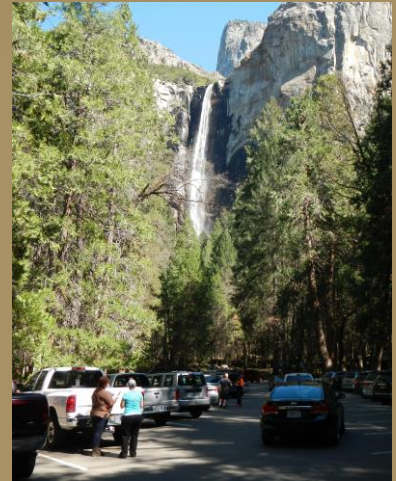
Compliance

National Environmental Protection Act (NEPA)

- Environmental Assessment (EA) underway
- Public review period ends March 14, 2018
- Anticipate decision document April 2018

National Historic Preservation Act Sec 106

- NPS anticipates: No Adverse Affect
- Consultation with SHPO and Tribes ongoing



Schedule

FY 18 Helium Act Funding Goal met
Compliance Complete
Director's Approval FY18 Phase 1
Phase 1 Construction Contract Award
FY 19 Helium Act Funding Goal (proposed)
Director's Approval FY19 Phase 2
Phase 2 Construction Contract Award

Substantial Completion

October 2017
April 2018
May 2018
July 2018
October 2018
November 2018
March 2019

August 2020



**Please share written comments by March 14, 2018
via one of the following methods:**

**1) Online via the Planning Environment and Public
Comment (PEPC) website at:**

<http://www.parkplanning.nps.gov/bridalveil>

**2) By US Mail (post marked by 3/14/18) to
Superintendent, Yosemite National Park, Attn: Bridalveil
Fall EA/ PO Box 577 Yosemite, CA 95389**

Thank You

