

Wawona Wastewater Treatment System Rehabilitation/ Environmental Assessment

Wawona Town
Planning Advisory Committee
Meeting
6/30/2017

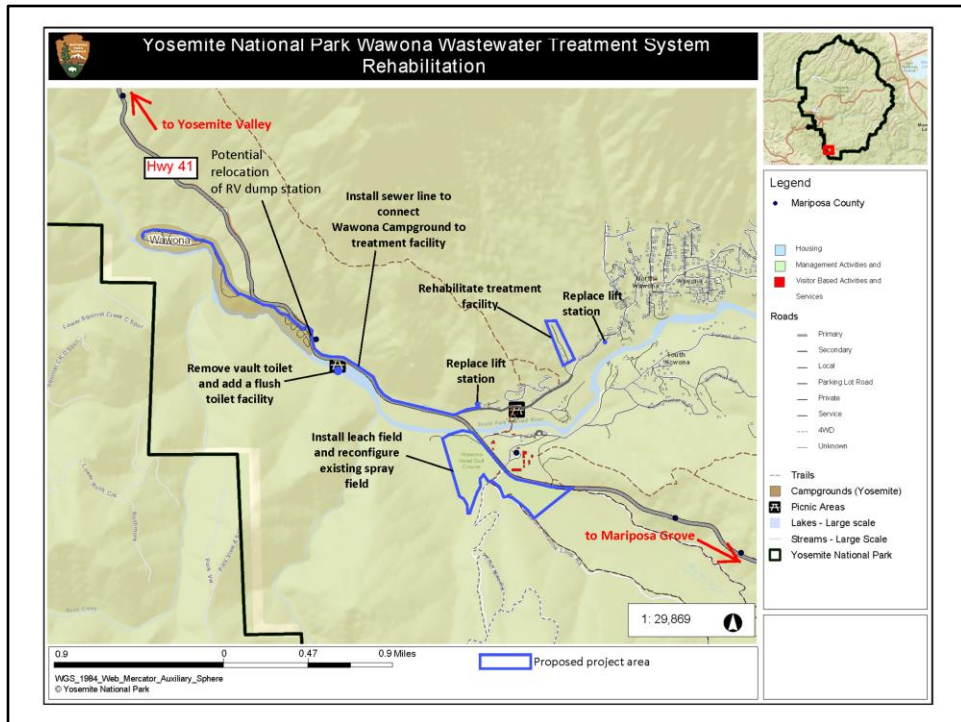


- Introduction

- **Garrett Chun**, YOSE Project Manager
- **Madelyn Ruffner**, YOSE Compliance Branch Chief
- **Kristin Anderson**, YOSE Compliance Specialist

- Meeting Agenda
 - Brief description of the project
 - Project schedule/what to expect
 - Open the meeting for any questions/comments
- Why are we doing the work?
 - To replace the aging Wawona wastewater treatment system components, increase plant capacity, and add solids treatment
 - To implement the Merced River Plan by connecting Wawona Campground to the treatment facility

Protecting River: Removing use of leach fields near river, no longer trucking untreated solids, adding disposal field with the intent of eliminating direct river discharge permit, analyze possibility of moving RV dump station to campground.



Project Components/Actions

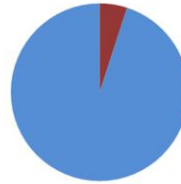
- Wastewater System: Increase system capacity
 - Incorporate Wawona Campground
 - Serve the currently unserved and undeveloped parcels



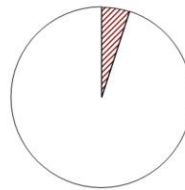
Project Components/Actions

- Wastewater System: Solids Handling

Current:



Proposed:



- Current: Currently the park trucks solids down to the valley (raw sewage) 2-4 times a week in the summer (Blue=Liquid, Red=Solids)
- Proposed: With new solids handling at the plant the park can de-water the solids waste and truck treated solids out of the park. (White=trucking out treated solids w/o liquids which will be disposed of through new disposal field and improved spray field in the golf course). This will greatly reduce the number of truck loads and eliminate transport of raw sewage.

Project Components/Actions

- Wastewater System: Effluent Disposal
 - Repair/Replace spray field at golf course
 - Investigate potential other secondary discharge methods



Project Components/Actions

- Wastewater System: Repair & address deferred maintenance
 - Improve treatment components, e.g. piping, tanks, electrical upgrades, HVAC, controls.



Project Components/Actions

- Replace 2 lift stations, sized for increased capacity.



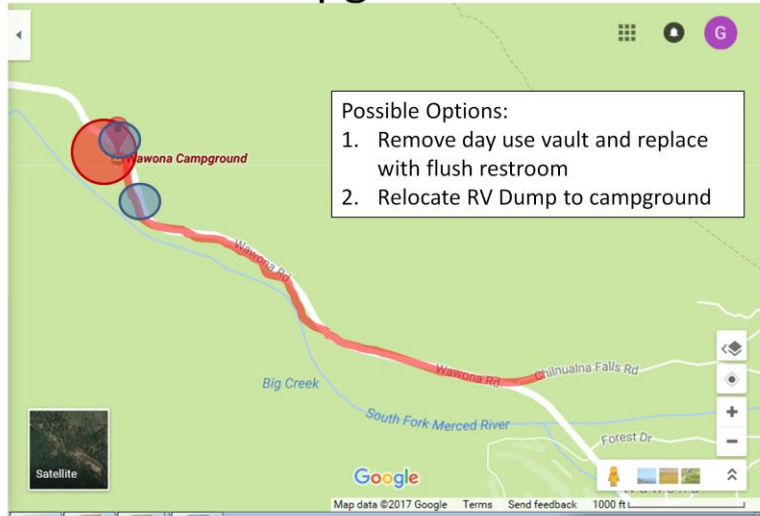
Project Components/Actions

- Connect campground to sewer system
 - Currently there are 6 Restrooms, each on its own septic/leach field



Project Components/Actions

- Wawona Campground Sewer



What to Expect

- Increased plant capacity and added solids handling
- Improved campground wastewater handling
- Temporary impacts to golf course operations
- Temporary traffic detours, traffic control

Schedule

- Public scoping – closed May 17, 2017
- **Design/alternatives – 2017 (current phase)**
- Public comment period for the environmental assessment – spring 2018
- Final decision document – late summer 2018
- Construction – 2019/2020

The park is currently identifying and analyzing environmental impacts and working on design alternatives. The next public comment period will be with the release of the Environmental Assessment, currently scheduled for spring 2018.

Questions?

The project's planning page is found at
<http://parkplanning.nps.gov/wwtp>