

GEORGETOWN CANAL PLAN

C&O CANAL
NATIONAL HISTORICAL PARK
CONSULTING PARTIES MEETING #4

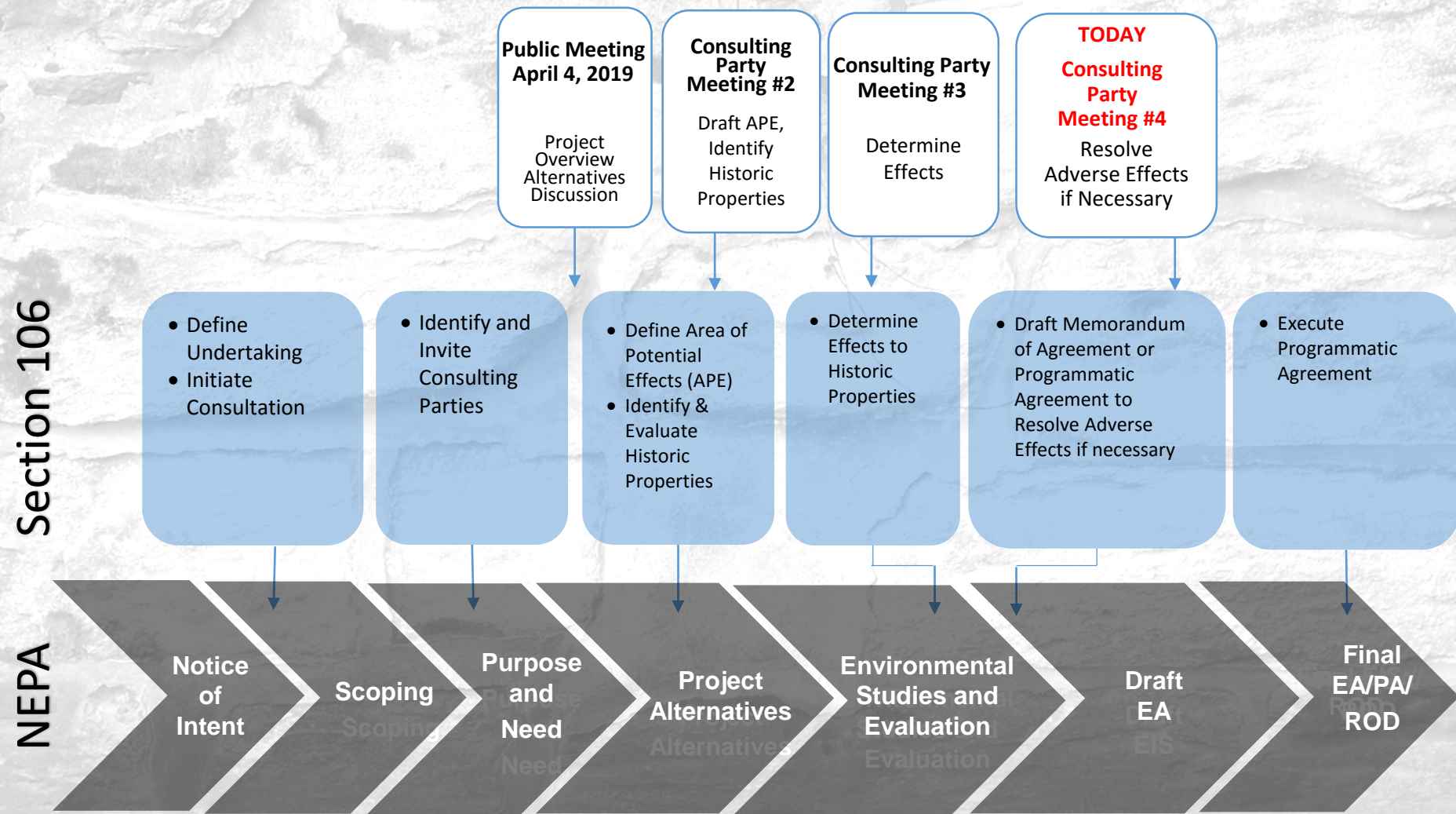
December 16, 2019



MEETING AGENDA

1. Review Project
2. Purpose and Need
3. Review Project and Area of Potential Effects
4. Review Adverse Effects
5. Programmatic Agreement
6. Next Steps

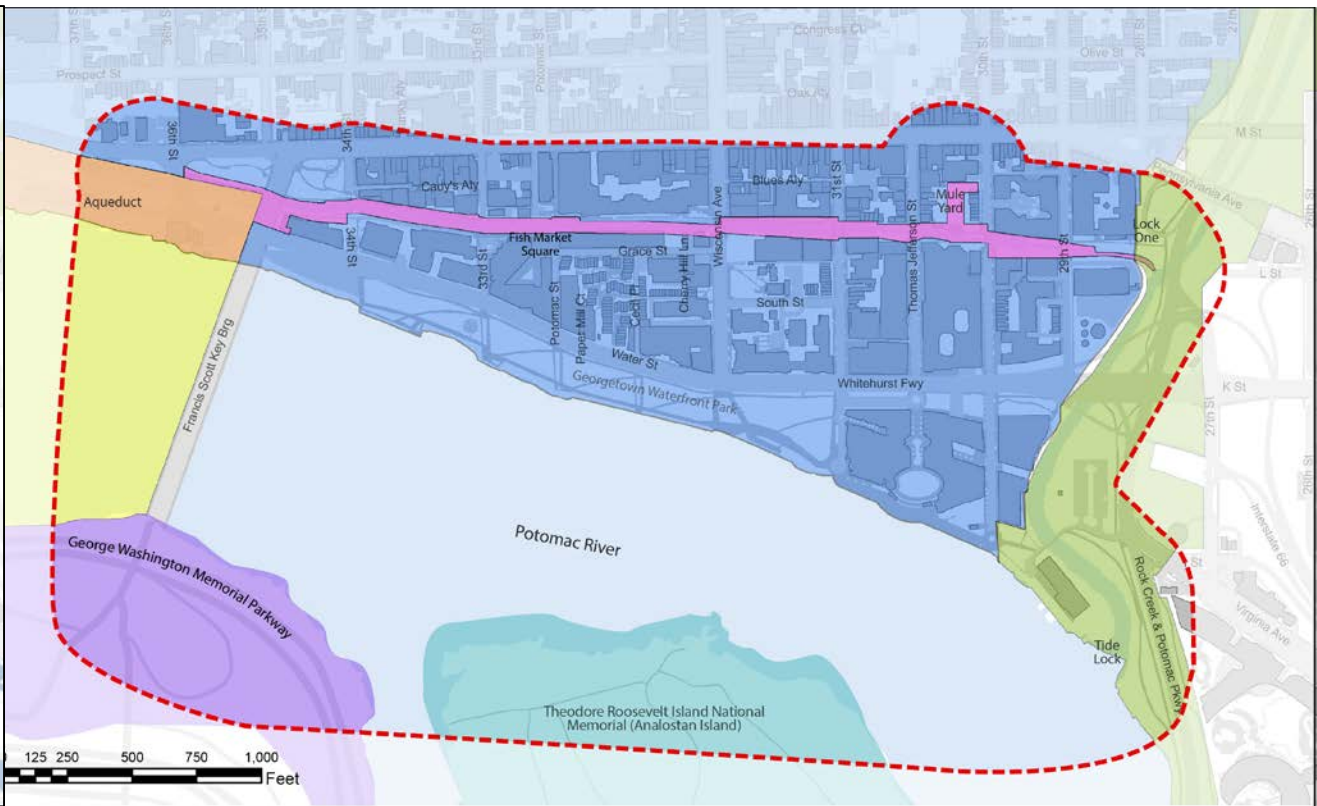
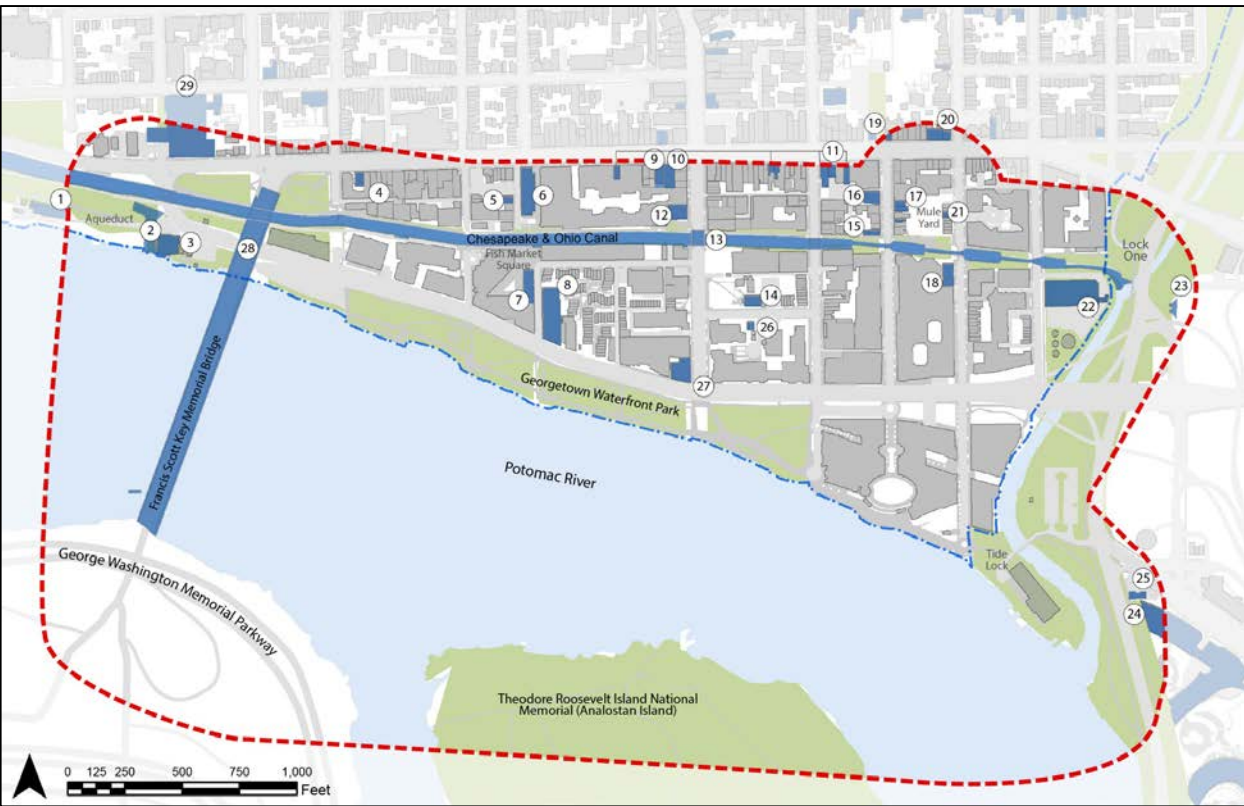
SECTION 106 AND NEPA COORDINATION



PROJECT BACKGROUND AND LOCATION



DRAFT AREA OF POTENTIAL EFFECT (APE)

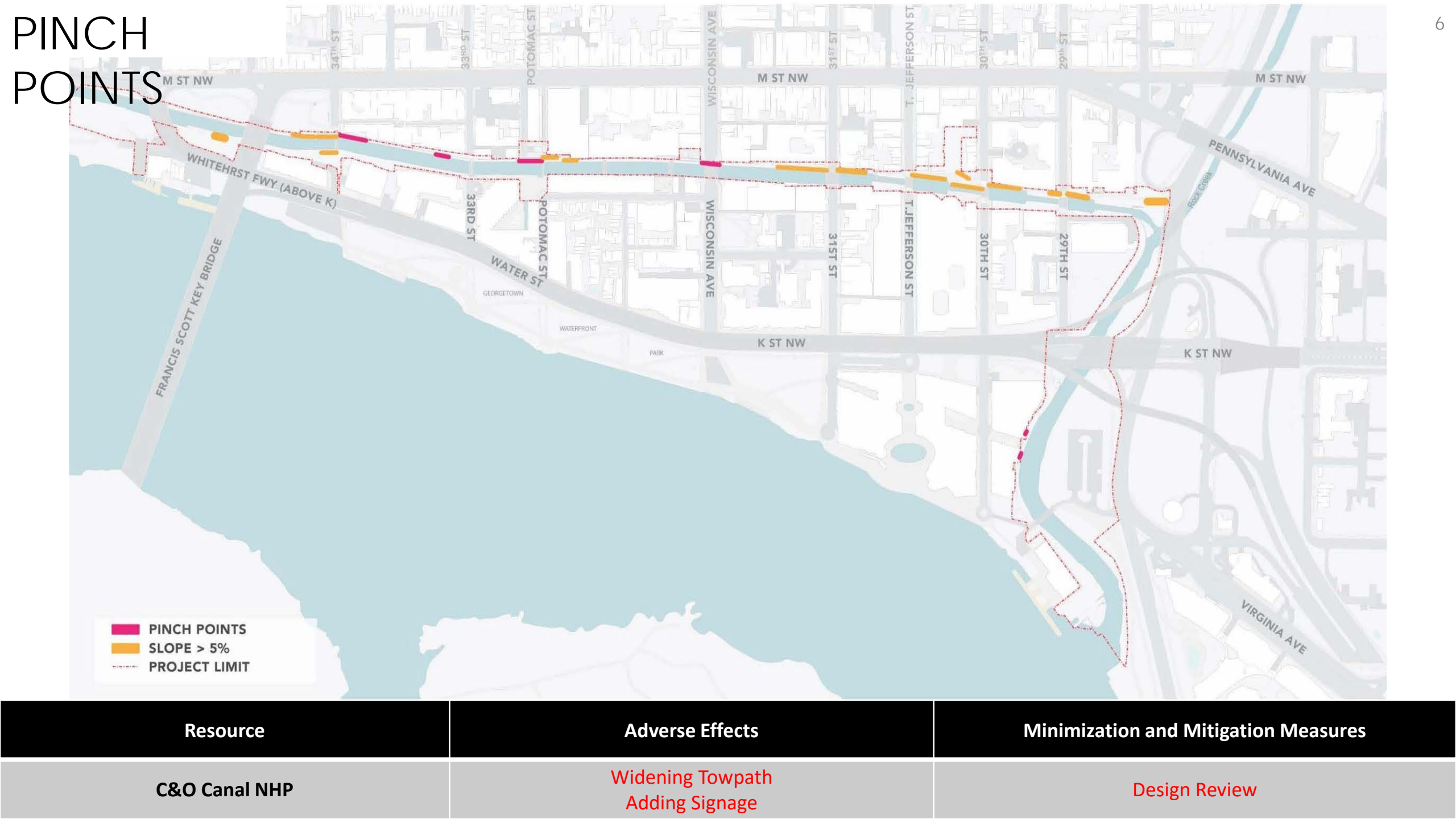


- Key**
- Draft APE Boundary (300 ft)
 - Individually Listed Properties
 - Georgetown National Historic Landmark District

- Individually Listed Properties***
- | | | |
|-----------------------------|--|--------------------------------------|
| 1. Washington Canoe Club | 9. Old Engine Company No. 5 | 17. Nicholas Hedges & Federal Houses |
| 2. Potomac Aqueduct Bridge | 10. City Tavern | 18. Duvall Foundry |
| 3. Abutment & Pier | 11. Georgetown Commercial Bldgs. | 19. Loughborough-Patterson House |
| 4. Potomac Boat Club | 12. Vigilant Fire House | 20. Thomas Sim Lee Corner |
| 5. Forrest-Marbury House | 13. Wisconsin Ave. Bridge and Canal Monument | 21. Henry McCleery House |
| 6. Joseph Carleton House | 14. Grace Church | 22. West Heating Plant |
| 7. Georgetown Market | 15. Potomac Masonic Lodge No. 5 | 23. Godey Lime Kilns |
| 8. Bomford Mill | 16. Adams-Mason Houses | 24. Watergate Complex |
| 25. D.C. Paper Mfg. Company | | 25. Key Bridge |

* Listed or determined eligible for listing in the National Register and/or DC Inventory

- Key**
- Chesapeake and Ohio Canal National Historical Park
 - Rock Creek and Potomac Parkway
 - Georgetown National Historic Landmark District
 - The Potomac Gorge (Potomac Palisades) Historic District
 - C&O Canal and Potomac Gorge overlap
 - Theodore Roosevelt Island National Memorial (Anacostan Island)
 - George Washington Memorial Parkway
 - Draft APE Boundary (300 ft)

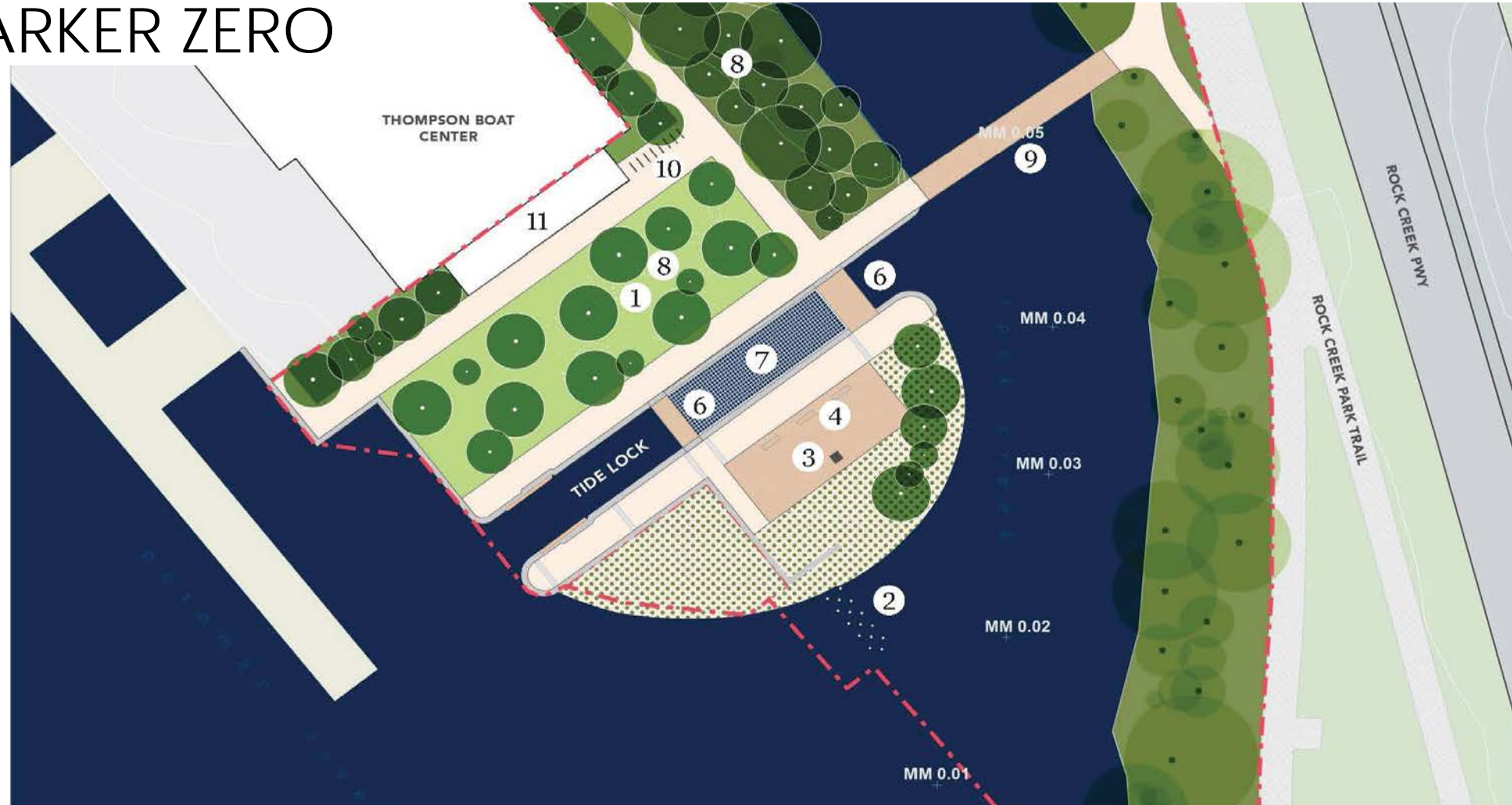


ZONE A



Resource	Adverse Effects	Minimization and Mitigation Measures
Rock Creek and Potomac Parkway	Adding Vegetation Along Parkway	Design Review

MILE MARKER ZERO



Resource	Adverse Effects	Minimization and Mitigation Measures
C&O Canal NHP	Adding Two Tide Lock Bridges Adding Tide Lock Nets Adding Mole Platform	Design Review
Rock Creek and Potomac Parkway	Adding New Bridge Adding Recreational Equipment	Design Review

ZONE B



Resource	Adverse Effects	Minimization and Mitigation Measures
C&O Canal NHP	Adding Te Amo Grove	Design Review

ROCK CREEK CONFLUENCE



Resource	Adverse Effects	Minimization and Mitigation Measures
C&O Canal NHP	Adding New Bridge Adding Platform	Design Review

THE LOCK



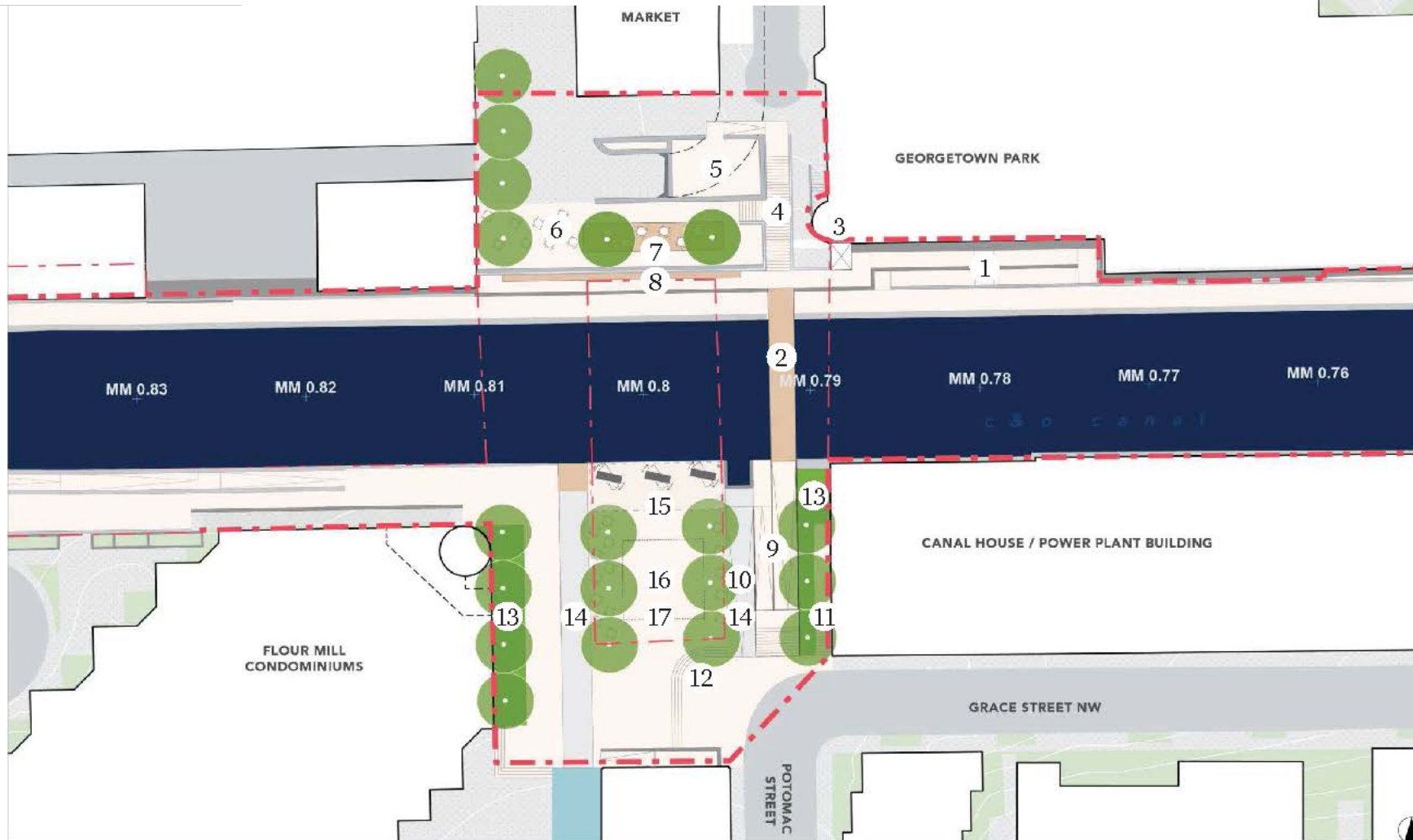
Resource	Adverse Effects	Minimization and Mitigation Measures
None	No Adverse Effect	N/A

THE OBELISK PLAZA



Resource	Adverse Effects	Minimization and Mitigation Measures
C&O Canal NHP	Moving Obelisk Widening Arch in Retaining Wall	Design Review
Georgetown NHL District	Moving Obelisk	Design Review
Individually Listed Resources	Wisconsin Avenue Bridge: Moving Obelisk	Design Review

CANAL OVERLOOK AND FISH MARKET SQUARE



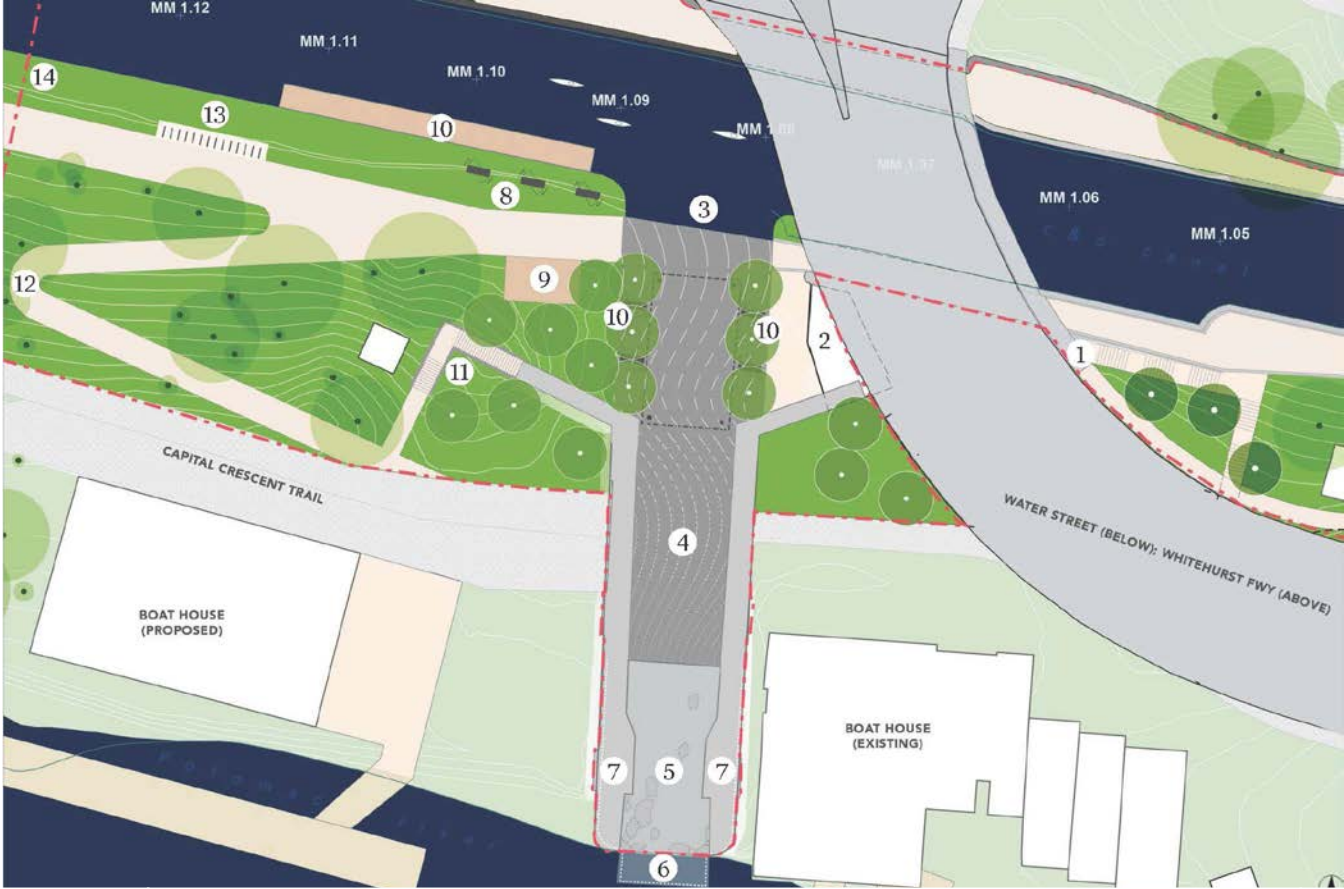
Resource	Direct Effects	Minimization and Mitigation Measures
C&O Canal NHP	Adding Permanent Seating, Replacing Potomac Street Bridge with Lower and Wider Bridge	Design Review

THE GONGOOZLER PLATFORM



Resource	Direct Effects	Minimization and Mitigation Measures
C&O Canal NHP	Adding Platform	Design Review
Georgetown NHL District	Adding Platform	Design Review

POTOMAC AQUEDUCT



Resource	Adverse Effects	Minimization and Mitigation Measures
C&O Canal NHP	Adding Art Platform, Adding Aqueduct Hardscape, Adding Bike Rack, Adding Permanent Seating, Adding Canoe Launch	Design Review
Georgetown NHL District	Adding Canoe Launch	Design Review
Individually Listed Resources	Potomac Aqueduct: Adding Art Platform, Adding Aqueduct Hardscape, Adding Permanent Seating	Design Review

TEMPORARY AND CUMULATIVE EFFECTS

Temporary Effects	Construction Effects	<p>C&O Canal NHP, Rock Creek and Potomac Parkway, Georgetown NHL District, The Potomac Gorge, Washington Canoe Club, Potomac Aqueduct, Potomac Boat Club, Joseph Carlton House, Georgetown Market, Bomford Mills, DC Paper Mill, Vigilant Firehouse, Wisconsin Avenue Bridge, Potomac Masonic Lodge No. 5, Adams-Mason House, Nicholas Hedges & Federal Houses, Henry McCleery House, West Heating Plant, Francis Scott Key Bridge</p>	<p>Construction Management Plan</p>
Cumulative Effects	Potomac River Tunnel	<p>C&O Canal NHP, Georgetown NHL District, The Potomac Gorge</p>	<p>Design Review Construction Management Plan</p>

Programmatic Agreement

Design Review

- With each phase moving forward, NPS will re-assess effects on resources within the APE;
- Determine No Adverse Effect:
 - Signatories and Consulting Parties have 30 days to review and concur;
 - If there is an objection, NPS work with the Consulting Parties to resolve any issues;
 - Signatories will determine if a meeting will be required
- Determine Adverse Effect:
 - Signatories and Consulting Parties have 30 days to review and concur;
 - NPS to consult with Signatories and Consulting Parties on avoidance, minimization and mitigation measures;
 - Signatories will determine if a meeting will be required

Construction Management Plan

- Plan to encompass the anticipated construction period to include noise and vibration

Programmatic Agreement (DRAFT – December 4, 2019)
Georgetown Canal Plan

PROGRAMMATIC AGREEMENT
AMONG
THE NATIONAL PARK SERVICE,
THE DISTRICT OF COLUMBIA STATE HISTORIC PRESERVATION OFFICE,
AND
NATIONAL CAPITAL PLANNING COMMISSION,
AND
REGARDING
THE GEORGETOWN CANAL PLAN
IN
WASHINGTON, D.C.

This Programmatic Agreement (PA) is made as of this ____ day of _____, 2019, by and among the National Park Service (NPS), the National Capital Planning Commission (NCPC), and the District of Columbia State Historic Preservation Officer (DC SHPO) (referred collectively herein as the “Signatories” or individually as a “Party” or “Signatory”), pursuant to Section 106 of the National Historic Preservation Act (NHPA), 54 United States Code [U.S.C.] § 306108, and its implementing regulations 36 CFR § 800, and pursuant to 36 CFR § 800.14(b) authorizing the negotiation of a PA to govern the implementation of a particular program, and resolution of adverse effects from complex project situations or multiple undertakings, regarding the Georgetown Canal Plan in Washington, DC (Undertaking); and

WHEREAS, the NPS, in partnership with Georgetown Heritage, are proposing potential improvements to the Chesapeake and Ohio Canal (C&O Canal or Canal) and Rock Creek and Potomac Parkway within the Georgetown Area (Georgetown Canal Plan or Plan), in Washington, DC on land administered by the NPS; and

WHEREAS, the Plan consists of the development and enhancement of the one-mile portion of the C&O Canal National Historic Park (NHP) and a portion of Rock Creek and Potomac Parkway in Georgetown, focusing on an array of repair and rehabilitation projects that address deferred maintenance issues and related safety and accessibility concerns associated with the C&O Canal Towpath; improving connections between Georgetown and the Towpath; enhancing visitor experience with increased signage; and optimizing underutilized areas; and

WHEREAS, the Plan extends from Lock One (approximately 28th Street NW) and the Potomac Aqueduct (approximately 36th Street NW), as well as the one-third-mile-long segment of Rock Creek and Potomac Parkway between the canal and the Potomac River, known as the Tide Lock ([Appendix A](#)); and

WHEREAS, the Plan includes all associated mitigations triggered by applicable laws, such as NHPA as amended (54 U.S.C. § 306108); the National Environmental Policy Act (NEPA) (42 U.S.C. § 4231 et seq.); and

Milestone	Date
Assessment of Effects	October 16, 2019
EA Released to Public	October 16, 2019
PA	December 16, 2019
Preparation of Decision Document	December 2019

A scenic view of a canal in an industrial district. The canal is flanked by brick buildings and a stone wall. A bridge crosses the water, and the scene is reflected in the calm water. The text "THANK YOU" is overlaid in the center.

THANK
YOU