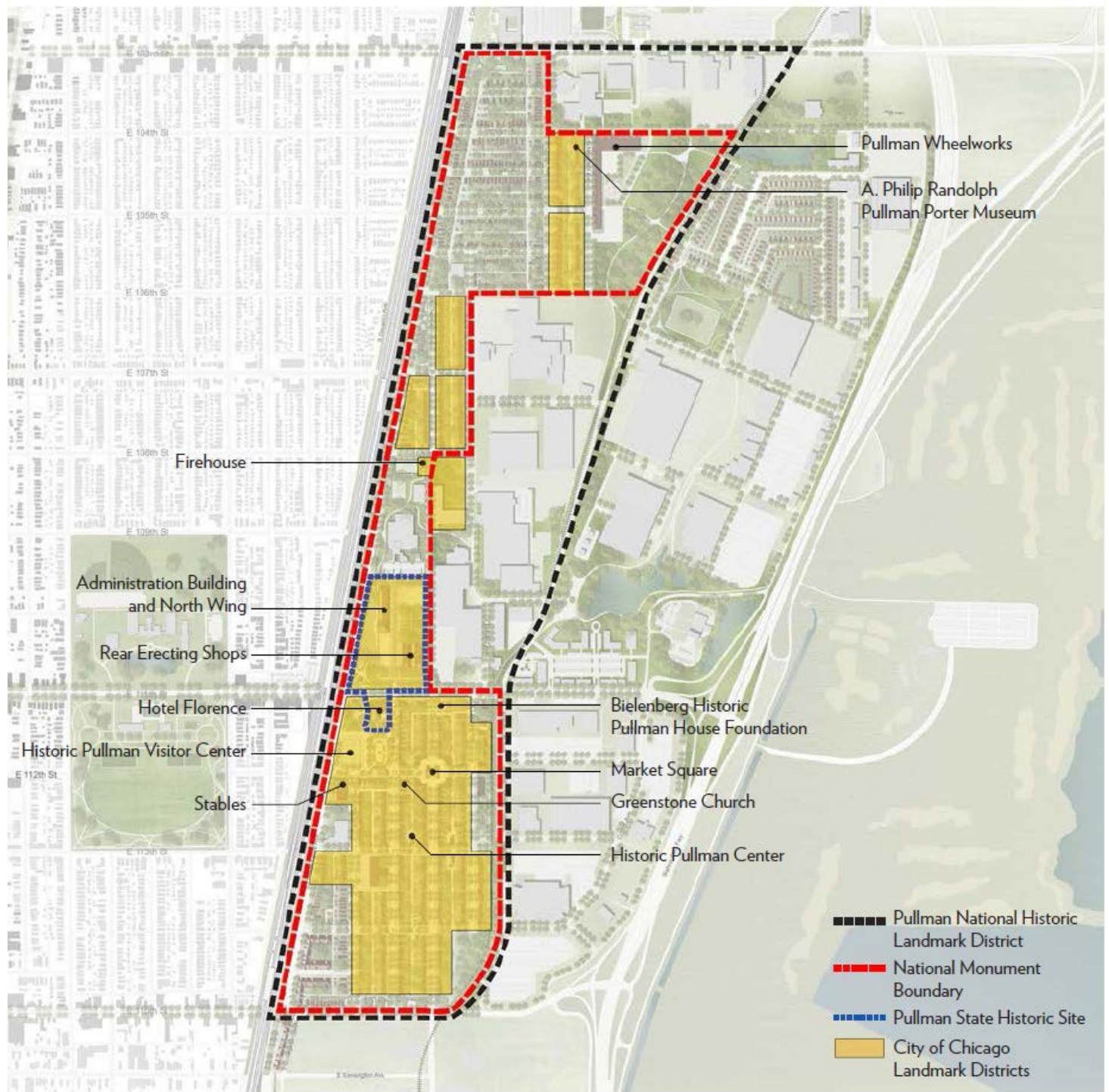


Pullman Designations



(Graphic courtesy of Positioning Pullman, <http://www.positioningpullman.org>)

Pullman Designations and Responsibilities

The **Pullman National Monument** boundary includes historic and active residences and businesses. The **National Park Service (NPS)** owns the historic Administration Building of the former Pullman factory (also known as the Clock Tower Building.) All NPS management policies and federal regulations apply where the NPS has an ownership interest in the property.

There are several overlapping designations and authorities in the Pullman neighborhood.

The **Illinois Historic Preservation Agency (IHPA)** owns and operates **Pullman State Historic Site** within the boundaries of the national monument. IHPA ownership includes the grounds around the Clocktower Building, the north factory wing, the rear erecting shop, and the four-story Hotel Florence. State regulations apply to these properties.

The majority of the land within the national monument boundary is a **City of Chicago Landmark**, within the boundaries of which the city reviews proposed alterations, demolitions, and new construction as part of the permit review process using *The Secretary of the Interior's Standards for the Treatment of Historic Properties*. The city has zoning authority and the ability to enforce landmark and building code violations through administrative hearings or circuit court. The city's oversight has and will continue to play an important role in the preservation of Pullman.

There is also a **National Historic Landmark (NHL) District** boundary overlaying the monument. Designation as a national historic landmark helps recognize, preserve, and protect important locations in American history. Most national historic landmarks are privately owned and are governed by local preservation laws, but the designation provides additional protections from federally assisted development projects. Properties inside the NHL boundaries may be eligible for preservation grants and technical preservation assistance.

Local, city, and state regulations apply within the boundaries of the national monument to all properties except those owned by the federal government or the state.

The federal government has limited ability to influence privately owned property inside the national monument boundary, aside from provisions related to the NHL district when a federal agency funds, authorizes, or carries out a program or project.

There are many places for visitors to experience Pullman stories and resources, including the Historic Pullman Foundation Visitor Information Center, Pullman State Historic Site at the Hotel Florence, the National A. Philip Randolph Pullman Porter Museum, and the Pullman neighborhood itself.

As a new unit of the National Park Service, Pullman National Monument is at the beginning stages of developing partnerships with existing Pullman organizations, defining and developing visitor services, and creating interpretive media. The way this monument will thrive is through active collaboration efforts among the National Park Service, Pullman residents, and partners. Many actions will depend on partner energy, attention, and funding.